

1. Overview

The ANFLAG BD60 is a multi-functional portable power device designed for automotive and personal use. It combines a high-current jump starter, a cordless air compressor, a power bank, and an LED flashlight into a single unit.



Primary functions include:

- Jump-starting 12V vehicles (gasoline, diesel up to 14.0L, hybrid).
- Inflating tires and other inflatables.
- Charging electronic devices via USB and powering 12V appliances.
- Providing emergency lighting.

2. Package Contents

- 1x BD60 7000A Jump Starter with 160PSI Air Compressor unit
- 1x Heavy-Duty Jumper Cables
- 1x 400V Insulated Gloves
- 1x Detachable Extended Air Hose
- 4x Air Nozzles

- 1x USB-A to USB-C Cable
- 1x USB-C to USB-C Quick Charging Cable
- 1x Instruction Manual
- 1x Rugged Carrying Case



3. Key Features & Specifications

3.1. Jump Starter

- **Peak Current:** 7000A
- **Compatibility:** 12V vehicles, including all gasoline, diesel engines up to 14.0L, and hybrid cars.
- **Battery Capacity:** 26,800mAh / 99.16Wh
- **Starting Times:** 40-60 times (depending on conditions)
- **Forced Start Function:** For severely depleted vehicle batteries.

3.2. Air Compressor

- **Maximum Pressure:** 160 PSI
- **Flow Rate:** 45L/min
- **Display:** 3.3-inch LCD showing real-time pressure.
- **Modes:** Car, Motorcycle, Bicycle, Ball, Custom.
- **Units:** PSI, BAR, KPA.
- **Auto Shut-off:** Prevents over-inflation.



3.3. Power Bank & Outputs

- **USB-C Port (Bi-directional):** PD 65W Max (for charging the unit or fast-charging a device).
- **USB-A Port 1:** 5V/3A, 9V/2A, 12V/1.5A (18W Max).
- **USB-A Port 2:** 5V/2.4A (12W).
- **DC Output (EC5 Socket):** 160W Max for 12V appliances (e.g., tire inflators, mini fridges).



3.4. LED Light

- **Brightness:** 600 Lumens.
- **Modes:** Flashlight, White Strobe, Red Strobe, SOS.

3.5. General Specifications

- **Product Dimensions:** 23.0 x 11.5 x 6.3 cm

- **Product Weight:** 1.16 kg
- **Operating Temperature:** -20°C to 60°C (-4°F to 140°F)
- **Battery Type:** Lithium-Ion
- **Safety Protections:** 12 systems including reverse polarity, overcurrent, overheating, overvoltage.



4. Use Guide

4.1. Initial Charging

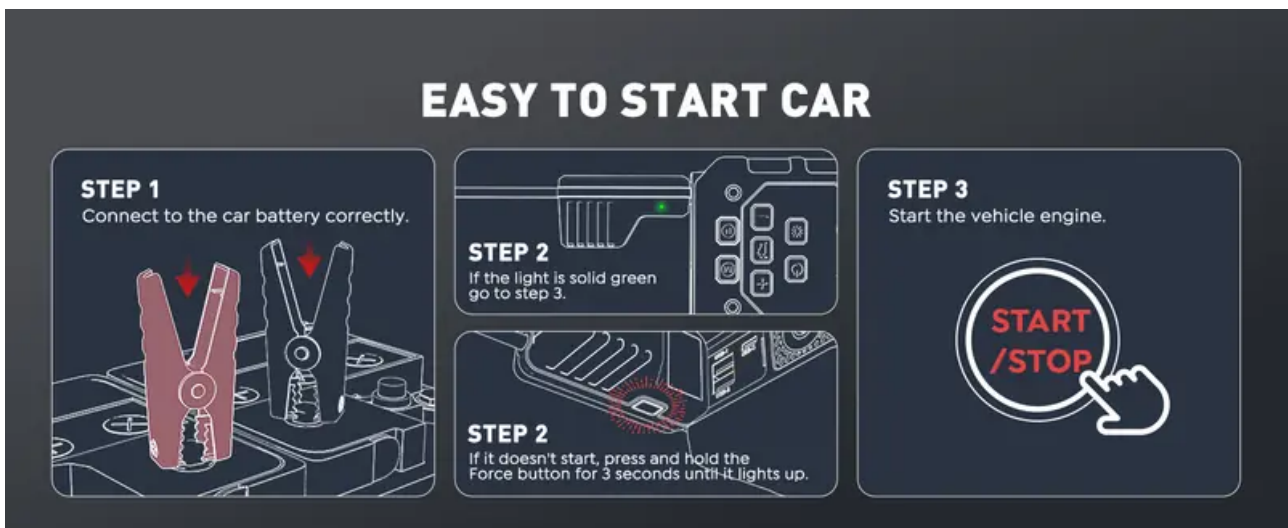
1. Before first use, fully charge the device using the provided USB-C to USB-C cable and a PD 65W wall charger (not included).
2. Connect the cable to the device's USB-C port. The LCD display will show the charging status and battery level.
3. Charging from 0% to 100% takes approximately 1.5 hours with a compatible 65W charger.

4.2. Jump-Starting a Vehicle

WARNING: Always wear the provided 400V insulated gloves. Ensure the jump starter is powered off before connecting cables. Follow the steps in order to avoid sparks or damage.

1. **Prepare the Vehicle:** Turn off the vehicle's ignition and all electronics (lights, radio, etc.).
2. **Connect the Cables:**
 - Plug the jumper cable connector firmly into the jump starter's output port.
 - Connect the RED clamp to the POSITIVE (+) terminal of the vehicle's dead battery.

- Connect the BLACK clamp to a clean, unpainted metal part of the vehicle's frame or engine block (a solid ground), away from the battery and fuel lines.
3. **Start the Jump Starter:** Turn on the jump starter unit. The display will show the connection status.
 4. **Start the Vehicle:** Get into the vehicle and start the engine. Do not crank for more than 3 seconds at a time. Wait 30 seconds between attempts.
 5. **Forced Start (if needed):** If the vehicle battery is severely depleted, press the "BOOST" or "Forced Start" button on the jump starter unit before attempting to start the vehicle.
 6. **Disconnect:** Once the vehicle is running:
 - Turn off the jump starter.
 - Remove the BLACK clamp from the ground.
 - Remove the RED clamp from the battery terminal.
 - Unplug the cable from the jump starter.



4.3. Inflating Tires or Other Items

1. **Power On:** Turn on the jump starter unit.
2. **Select Mode:** Press the mode button to cycle through the inflation presets (Car, Motorcycle, Bicycle, Ball) or select "Custom" to set a target pressure manually.
3. **Set Target Pressure:** In "Custom" mode, use the +/- buttons to set the desired pressure. The unit can display PSI, BAR, or KPA.
4. **Attach Hose:** Screw the detachable air hose onto the compressor outlet. Attach the appropriate nozzle to the other end of the hose.
5. **Connect to Valve:** Firmly press the nozzle onto the tire valve (or inflatable item's valve).
6. **Start Inflation:** Press and hold the trigger/start button on the air hose. The LCD will show the current pressure rising.

7. **Auto Stop:** Release the trigger. The compressor will automatically stop when the target pressure is reached.
8. **Disconnect:** Remove the nozzle from the valve and unscrew the hose from the unit if not needed.

4.4. Using as a Power Bank

1. **Charge the Jump Starter:** Ensure the unit has sufficient charge.
2. **Connect Device:** Use your own USB cable to connect a smartphone, tablet, or other device to one of the USB-A ports or the USB-C port.
3. The device will begin charging automatically. The LCD may show the output status.
4. **Using the DC Output:** Plug a 12V appliance (with an EC5 plug) into the DC output socket. Turn on the jump starter unit to provide power.



4.5. Using the LED Light

1. Locate the light button, typically near the LED panel.
2. Press the button repeatedly to cycle through the four modes: Steady Light (Flashlight), White Strobe, Red Strobe, SOS.
3. To turn the light off, continue pressing until all modes are cycled through.

5. Safety Instructions & Maintenance

- Read all instructions before use.
- Always use the provided 400V insulated gloves when handling jumper cables.
- Do not use the jump starter to charge or jump-start non-12V batteries.
- Do not disassemble, puncture, or incinerate the unit.

- Store the device in the provided carrying case in a cool, dry place, away from direct sunlight and extreme temperatures.
- Recharge the unit at least once every three months if not used regularly to maintain battery health.
- If the unit is damaged, emits odor, or becomes excessively hot, discontinue use immediately.
- Keep away from children.

6. Troubleshooting

Issue	Possible Cause	Solution
Jump starter does not turn on.	Battery is completely depleted.	Connect to a PD 65W charger using the USB-C port for at least 5 minutes, then try again.
Vehicle does not start.	Clamps connected incorrectly; vehicle battery fault beyond boosting; jump starter battery low.	Verify correct clamp connection (Red to +, Black to ground). Ensure jump starter is charged. Try the Forced Start function. The vehicle may require professional service.
Air compressor does not start.	Target pressure is already reached; hose not connected properly; unit overheated.	Check current pressure on display. Ensure hose is screwed on tightly. Allow unit to cool down if it has been used extensively.
Device not charging via USB-C.	Using an incompatible low-power charger.	Use a USB-C PD charger rated at 65W for fastest charging.
Error code or flashing icon on display.	Safety protection triggered (e.g., reverse polarity, overload).	Turn unit off. Disconnect all cables. Identify and correct the fault (e.g., wrong clamp connection). Turn unit back on.

7. Warranty and Support

This product is backed by a 2-year manufacturer's warranty from the date of purchase. For warranty service or technical support, contact ANFLAG directly. Proof of purchase will be required.

Manufacturer: ANFLAG

Manufacturer Part Number: BD60

Warning

This content is compiled from multiple sources and is provided for reference purposes only. It may not be complete or fully applicable to all situations. If you are unable to resolve your issue, please contact the product manufacturer or an authorized service provider for official support.

Document generated by [ManualsFile](#)