

Overview

The NEXPOW NP2 is a multi-function portable power device designed for automotive and outdoor use. It combines a high-capacity jump starter, a digital tire inflator, a portable power bank, and an emergency light into one compact unit.



Features and Specifications

Core Functions

- **Emergency Jump Starter:** 3000A peak current for starting 12V vehicles up to 8.0L gasoline or 8.0L diesel engines.
- **Built-in Air Compressor:** 150 PSI maximum pressure with digital preset and auto shut-off.
- **Portable Power Bank:** Features PD18W fast charging via USB-C and a standard USB output.
- **Emergency LED Light:** 600 lumens with three modes: flashlight, strobe, and SOS.
- **LCD Display:** Shows internal battery status and real-time tire pressure readings.
- **Force Start Function:** A dedicated button on the clamps for starting vehicles with deeply discharged batteries.

Technical Specifications

- **Model:** NP2
- **Start Voltage:** 12V
- **Battery Type:** Lithium Ion
- **Battery Capacity:** 59.2 Amp Hours
- **Peak Current:** 3000A
- **USB-C Input/Output (PD18W):** 5V/3A, 9V/2A, 12V/1.5A
- **USB Output:** 5V/3A, 9V/2A, 12V/1.5A
- **DC Output:** 12–16.8V/10A
- **Inflator Pressure Range:** 1–150 PSI / 0.1–10.5 BAR / 1–1050 KPA
- **Operating Temperature:** -20°C to 60°C



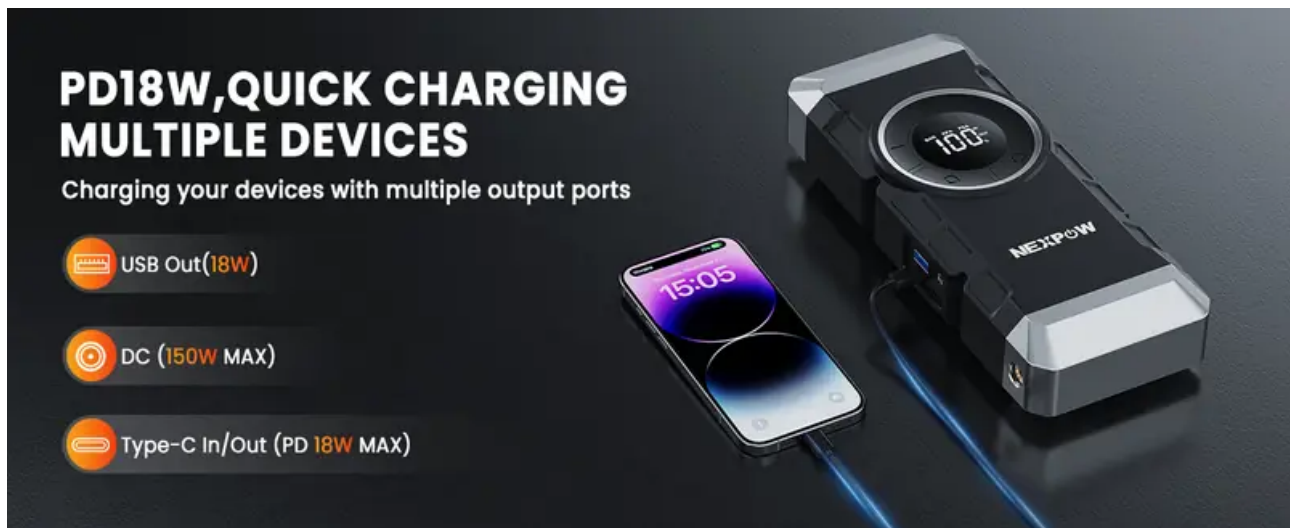
Use Guide

Initial Charging

Before first use, fully charge the device using the provided USB-C cable and a compatible PD charger.

Jump Starting a Vehicle

1. Ensure the jump starter is powered on. The LCD screen should illuminate.
2. Connect the jumper cables to the unit's output port.
3. Identify the vehicle battery's positive (+) and negative (-) terminals.
4. Connect the red clamp to the positive terminal of the dead battery.
5. Connect the black clamp to a clean, unpainted metal part of the vehicle's frame (a ground point), away from the battery and fuel lines.
6. Verify connections are secure. The intelligent clamps should indicate correct polarity.
7. Start the vehicle. If the vehicle does not start, press and hold the **Force Start** button on the clamps for 3 seconds until a green light illuminates, then attempt to start the vehicle again.
8. Once the vehicle starts, remove the clamps in reverse order: black clamp first, then red clamp.
9. Disconnect the cables from the jump starter and recharge the unit.



Using the Air Compressor

1. Extend the coiled air hose from its storage compartment.
2. Screw the hose connector firmly onto the tire's valve stem.
3. Power on the unit. The LCD will show the current tire pressure.

4. Use the "+" and "-" buttons to set your desired target pressure (PSI, BAR, or KPA).
5. Press the start button to begin inflation. The compressor will automatically stop when the target pressure is reached.
6. Unscrew the hose connector from the valve stem and stow the hose.



Using as a Power Bank

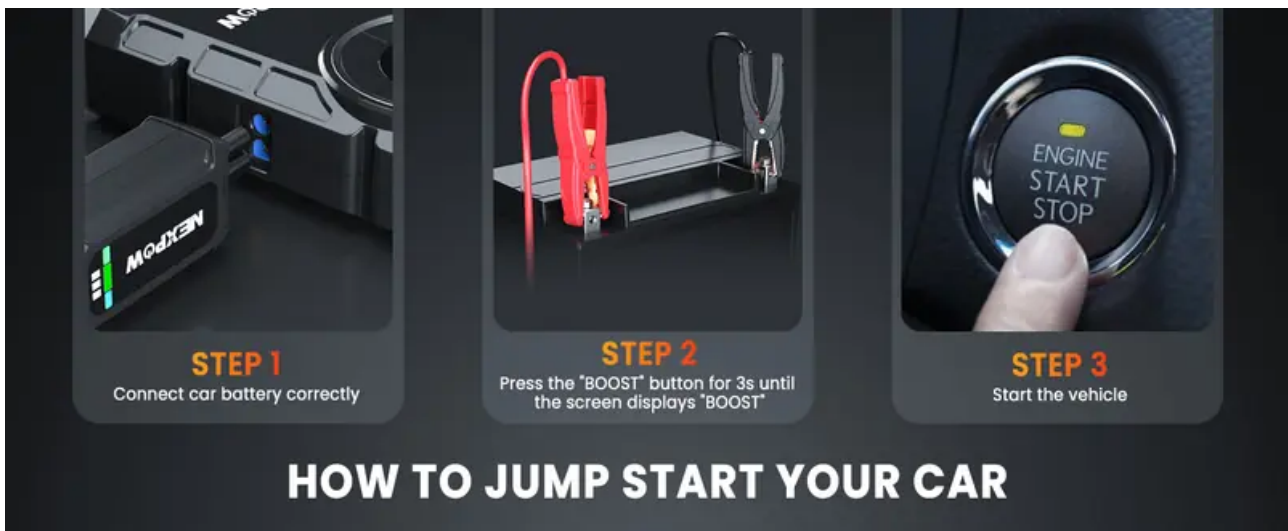
- To charge the jump starter: Connect a PD charger to the USB-C port.
- To charge a device: Connect your device's cable to the USB-A or USB-C output port. The unit will automatically detect the device and deliver appropriate power.

Using the Emergency Light

Press the light button to cycle through the three modes: steady flashlight, strobe, and SOS. Press and hold the button to turn the light off.

Safety and Maintenance

- Read all instructions before use.
- Do not use the jump starter to charge or jump start non-12V batteries.
- Ensure clamps do not touch each other when connected to the jump starter.
- Keep the unit away from water, heat sources, and direct sunlight.
- Store the device in the provided carrying case.
- Recharge the unit every 3-6 months if not in use to maintain battery health.
- Do not disassemble the unit. There are no user-serviceable parts inside.



Troubleshooting

- **Unit does not power on:** Recharge the device fully.
- **Vehicle does not jump start:**
 - Verify clamp connections are clean and secure.
 - Ensure the vehicle battery voltage is above 3V.
 - Use the Force Start function.
 - The unit's internal battery may be low; recharge it.
- **Air compressor does not start:** Check that the hose is properly connected and not kinked. Ensure the target pressure is set higher than the current tire pressure.
- **Device does not charge other electronics:** Try a different cable. Ensure the connected device is compatible with the output specifications.

Warning

This content is compiled from multiple sources and is provided for reference purposes only. It may not be complete or fully applicable to all situations. If you are unable to resolve your issue, please contact the product manufacturer or an authorized service provider for official support.