

Package Contents

Package Contents



Robot



Docking Station



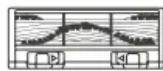
Instruction Manual



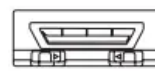
Quick Start Guide



(4) Side Brushes



Main Brush Option
(Pre-installed)



Direct Suction Option



Reservoir



Washable/Reusable
Microfiber Cleaning Cloth



Disposable Cleaning Cloth



Cleaning Cloth Plate

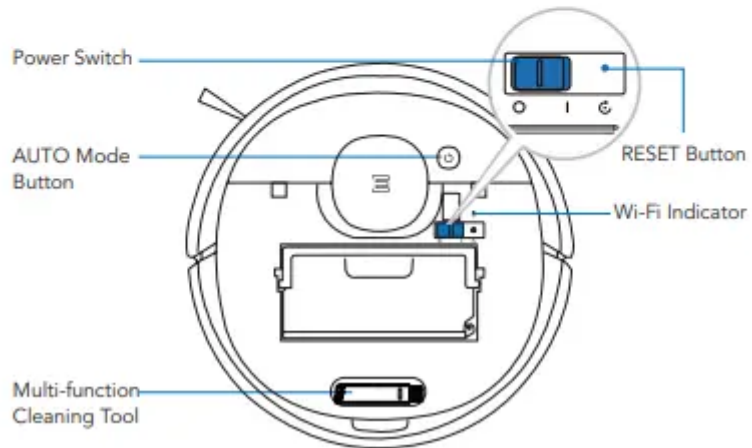
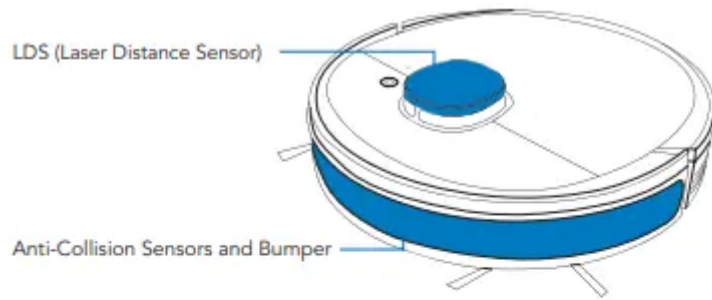


Washable High Efficiency
Filter and Sponge Filter

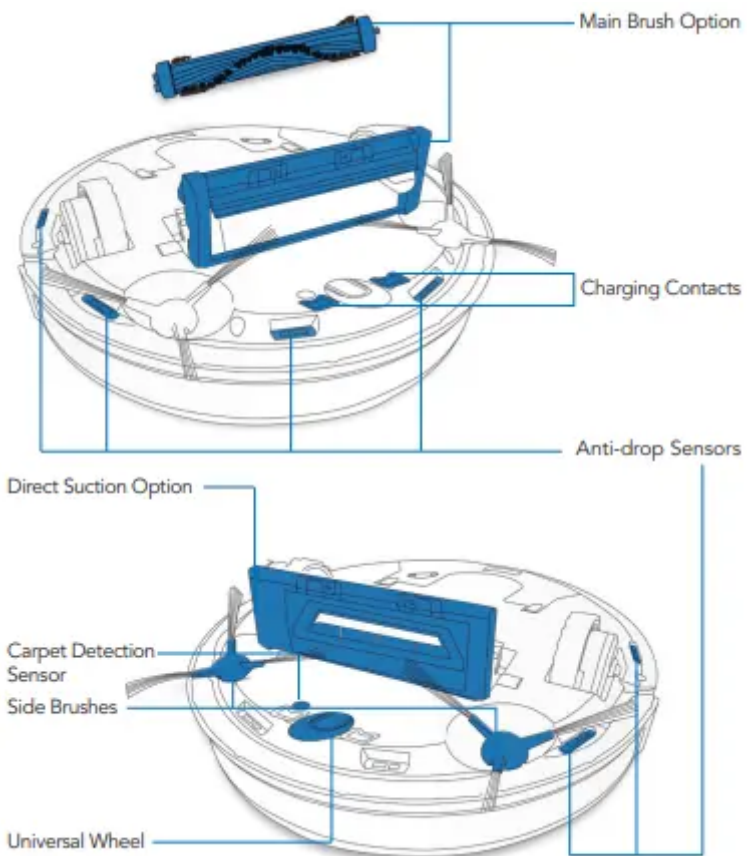
Note: Figures and illustrations are for reference only and may differ from actual product appearance. Product design and specifications are subject to changes without notice.

Product Diagram

Robot

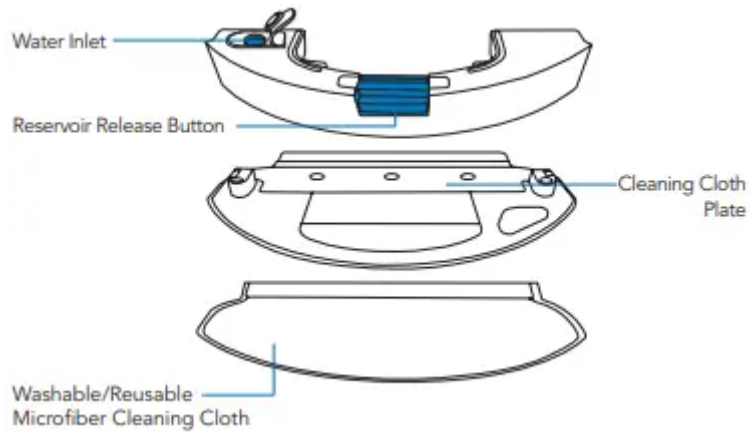


Bottom View

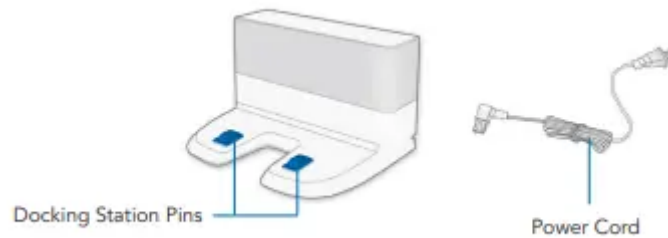


Reservoir





Docking Station



Operating and Programming

Notes Before Cleaning

WARNING: Do not use DEEBOT on wet surfaces or surfaces with standing water



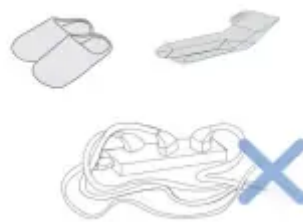
Before using the product on a rug with tasseled edges, please fold the rug edges under.



It may be necessary to place a physical barrier at the edge of a drop to stop the unit from falling over the edge.



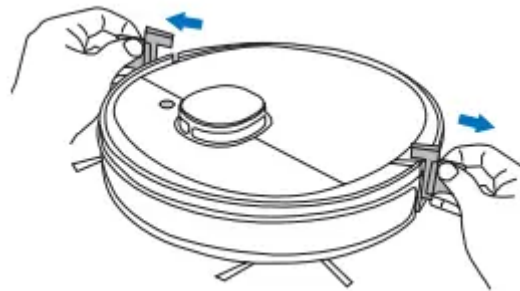
Tidy up the area to be cleaned by putting furniture, such as chairs, in their proper place.



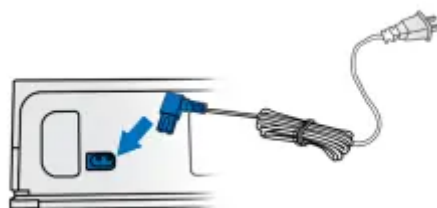
Remove power cords and small objects from the floor that the robot could be obstructed by

Preparation

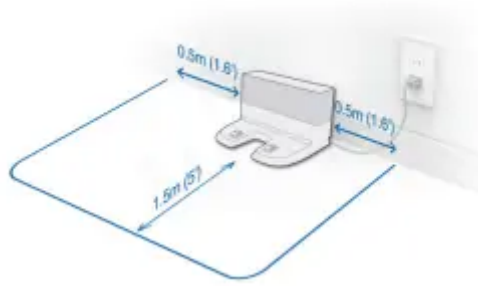
1. Remove Protection Strip



2. Assemble Docking Station

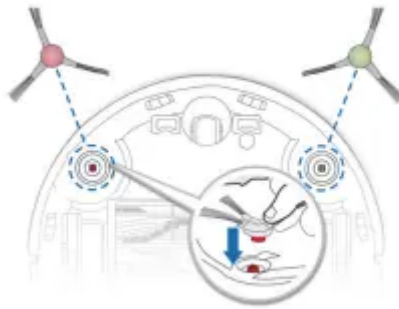


3. Docking Station Placement

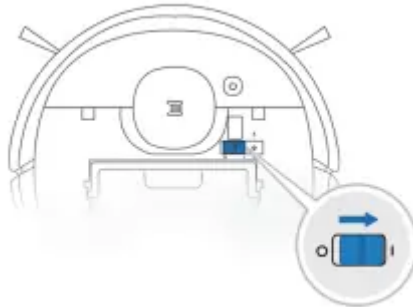


Please place the Docking Station on a hard floor surface.

4. Install Side Brushes



5. Power ON



6. Charge DEEBOT

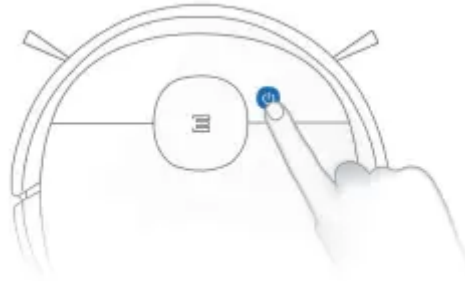


Note: When DEEBOT completes the cleaning cycle or when the battery gets low, DEEBOT automatically returns to the Docking Station to recharge itself. DEEBOT can also be sent

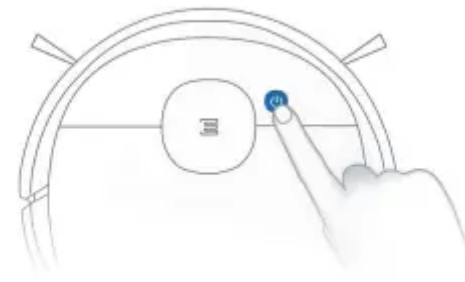
back to the Docking Station at any time by using the ECOVACS App or by pressing the AUTO Button on the robot for 3 seconds.

Empty remaining water from the Reservoir and remove the Cleaning Cloth Plate before charging DEEBOT.

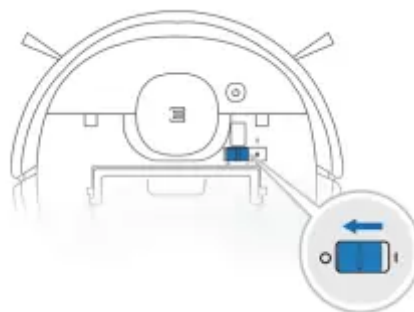
7. Pause



8. Start



9. Power OF



Note: When DEEBOT is not working, it is recommended to keep it switched ON and charging

All the functions mentioned above can be enabled on the App. Download ECOVACS App to access more features, including MAX Mode, Scheduled Cleaning, etc

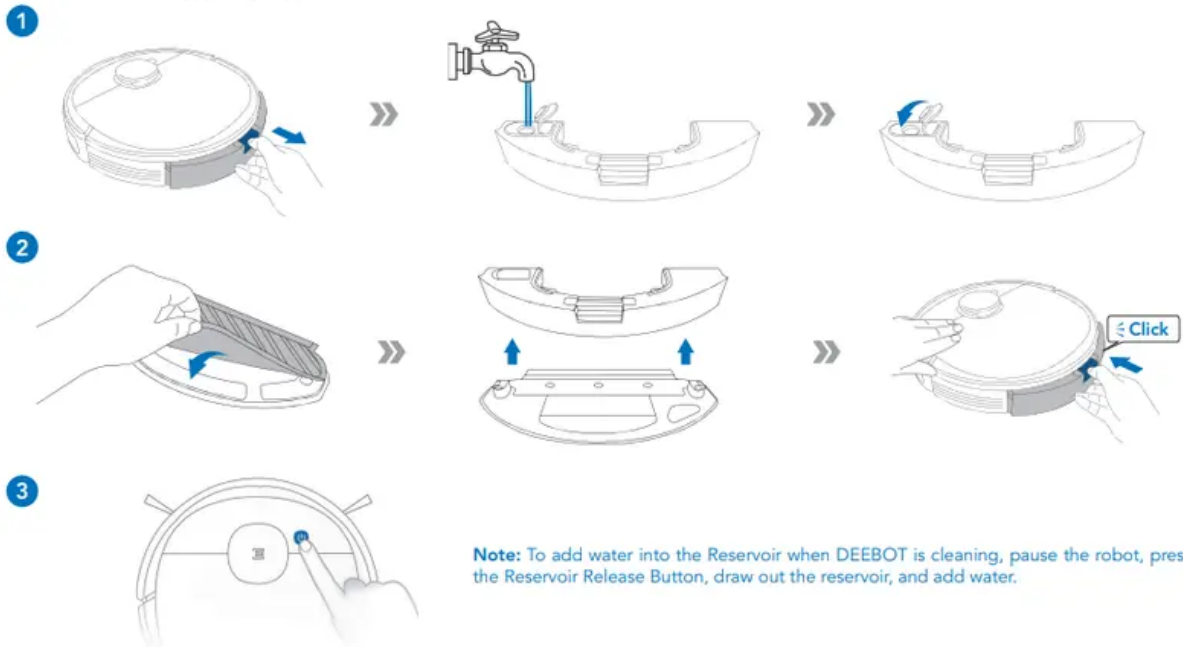


Q ECOVACS HOME



✓ iOS 9.0 or later ✓ Android 4.0 or later

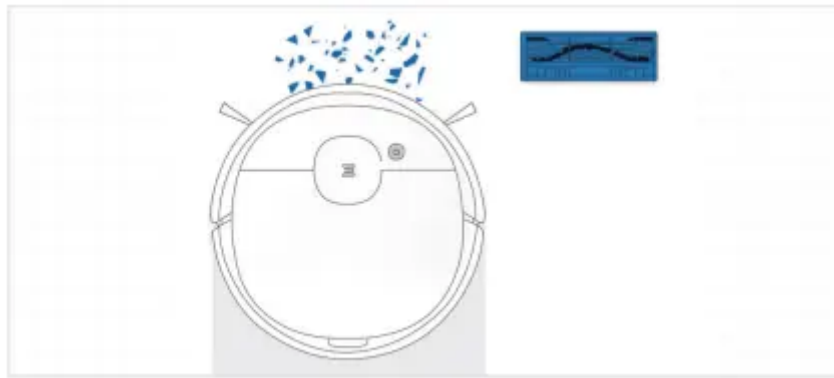
OZMO Mopping System



Choosing a Suction Option

Main Brush Option: The best choice for deep cleaning, with a combination of the Main Brush and strong suction.



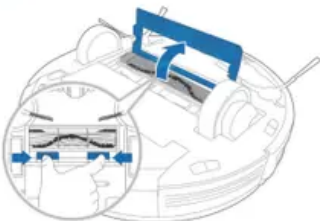


Direct Suction Option: The best choice for daily cleaning. This Suction Option is specifically designed to pick up hair without getting clogged by it, and is ideal for pet owners.

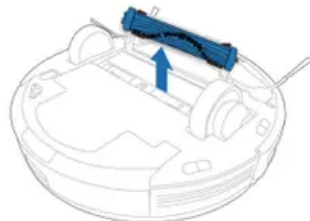


Install the Direct Suction Option

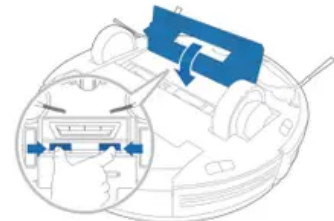
1



2

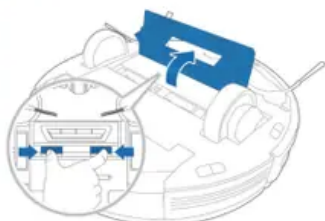


3

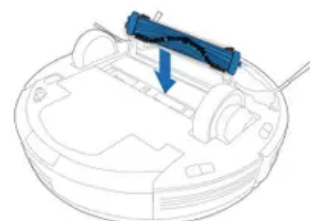


Install the Main Brush Option

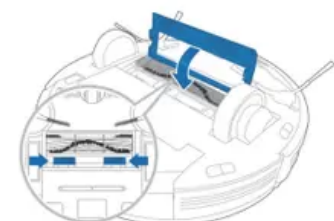
1



2



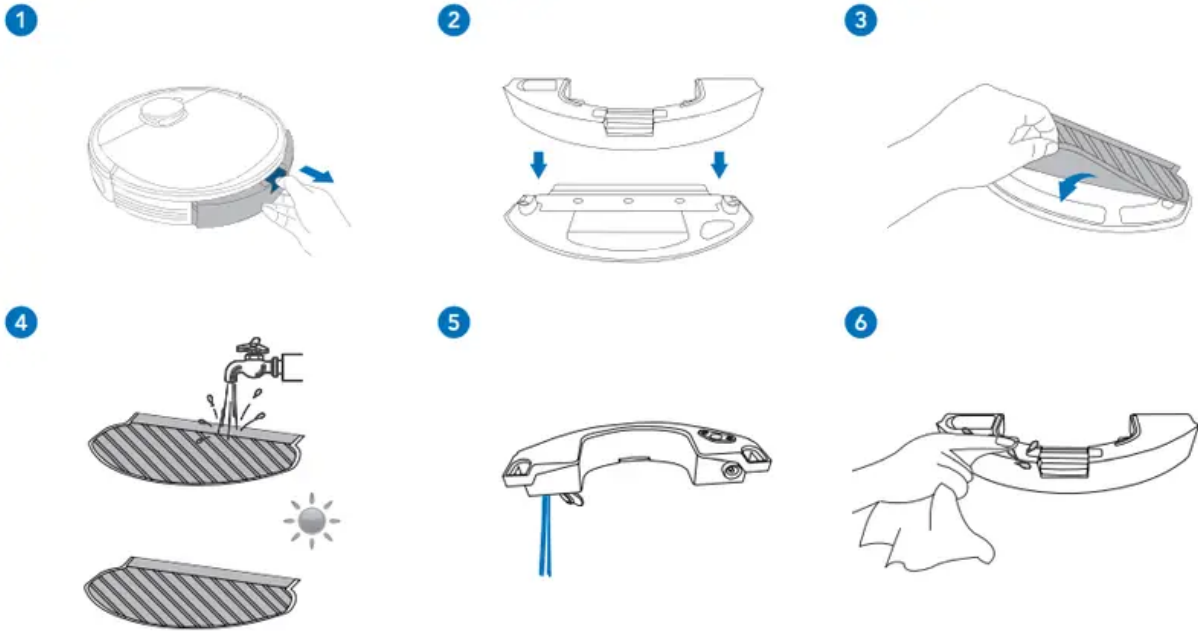
3



Maintenance

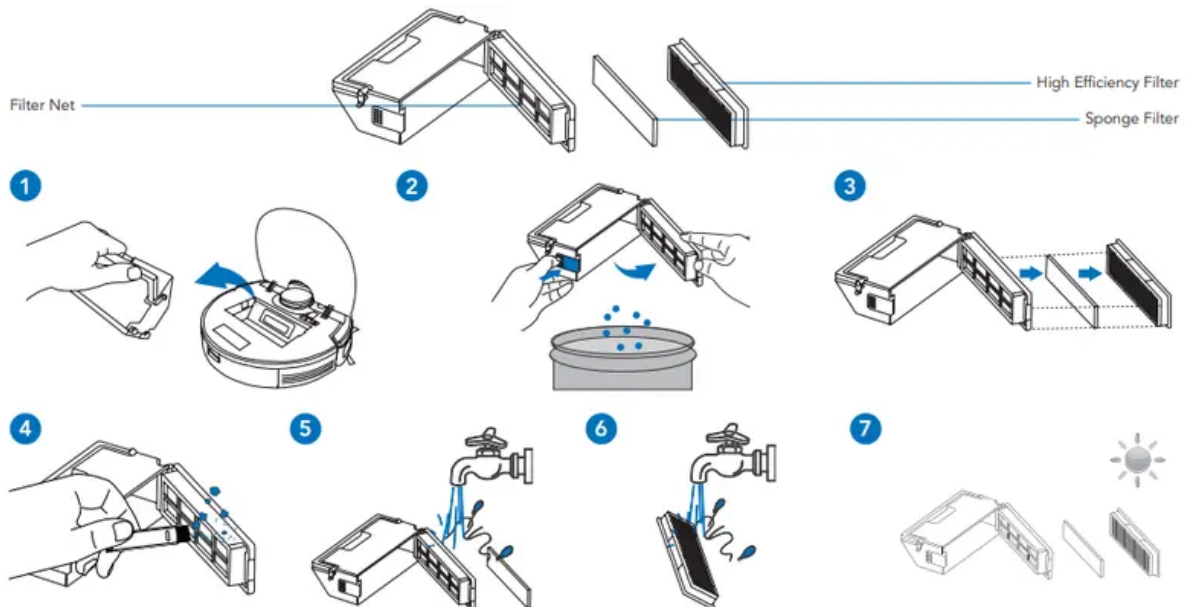
Before performing cleaning and maintenance tasks on DEEBOT, turn the robot OFF and unplug the Docking Station.

OZMO Mopping System



Dust Bin and Filters

Dust Bin



Note:

1. Please rinse the filter with water as shown above.
2. Do not use finger or brush to clean the filter.

3. Be sure to dry out the filter for at least 24 hours after washing

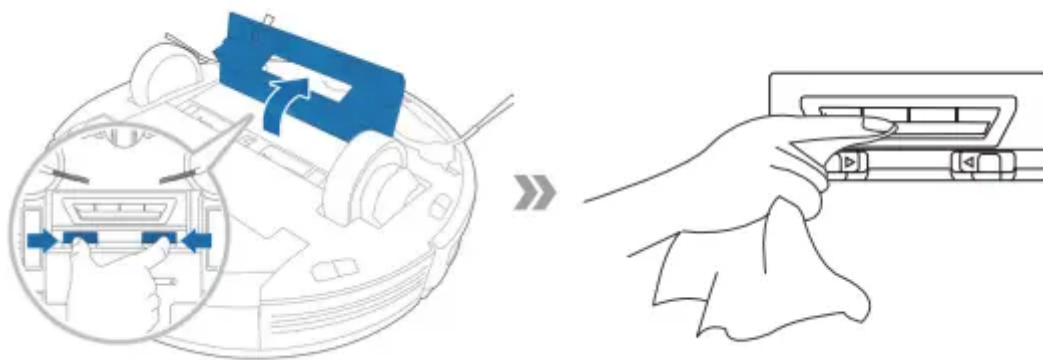
Main Brush, Direct Suction Option and Side Brushes

Note: A Multi-Function Cleaning Tool is provided for easy maintenance. Handle with care, this cleaning tool has sharp edges.

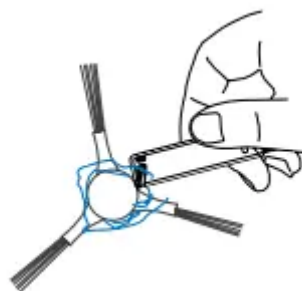
Main Brush



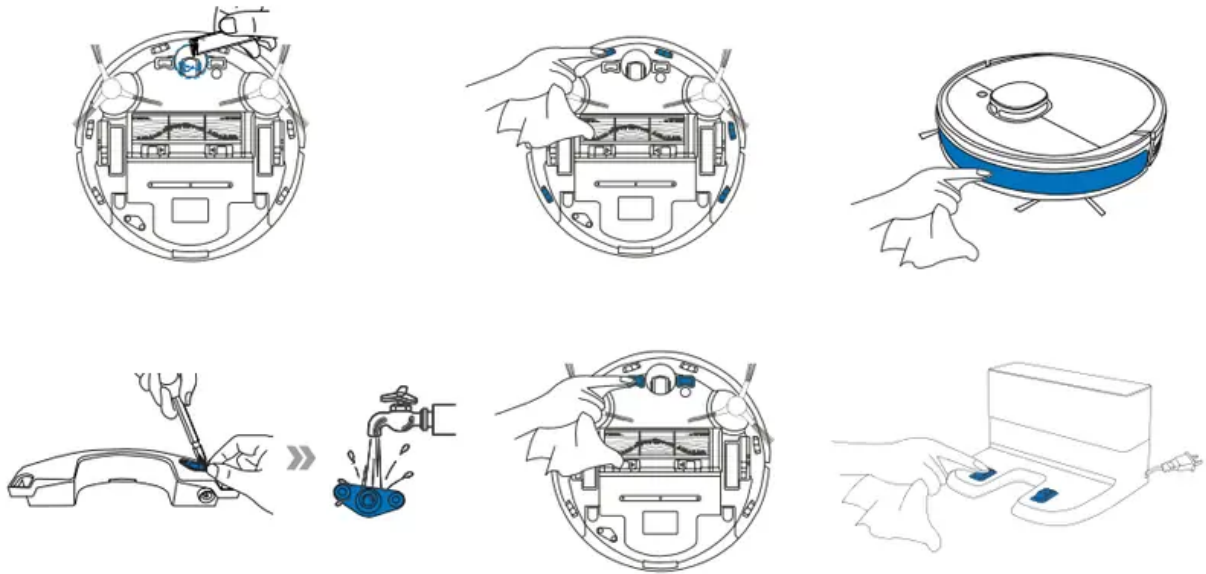
Direct Suction Option



Side Brushes



Other Components



Note: Before cleaning the robot's Charging Contacts and Docking Station Pins, turn the robot OFF and unplug the Docking Station.

Regular Maintenance

To keep DEEBOT running at peak performance, perform maintenance tasks and replace parts with the following frequencies:

Robot Part	Maintenance Frequency	Repl
Cleaning Cloth	After each use	Every 50
Reservoir/Cleaning Cloth Plate	After each use	
Side Brush	Once every 2 weeks	Every 3-
Main Brush	Once per week	Every 6-1.
Sponge Filter/ High Efficiency Filter	Once per week	Every 3-
Universal Wheel Anti-Drop Sensors Bumper Charging Contacts Docking Station Pins	Once per week	

A multi-function Cleaning Tool is provided for easy maintenance. Handle with care, this cleaning tool has sharp edges.

Note: ECOVACS manufactures various replacement parts and fittings. Please contact Customer Service for more information on replacement parts.

Indicator Light

DEEBOT will tell you something is wrong with an indicator light and voice report. More detailed support is available through the ECOVACS HOME and online website.

Indicator Light	Scenario
AUTO Mode Button glows a solid WHITE	The robot is cleaning
	The robot is paused while cleaning
	The robot is charging
AUTO Mode Button flashes WHITE	The robot is starting
	The robot is relocating
AUTO Mode Button glows a solid RED	The robot has low battery
AUTO Mode Button flashes RED	The robot has a problem

Troubleshooting

No.	Malfunction	Possible Causes	So
1	DEEBOT is not charging.	DEEBOT is not switched ON.	Switch O
		DEEBOT has not connected to the Docking Station.	Be sure t robot's C Contacts connecte Docking
		The Power Cord is not connected to the Docking Station.	Make sur Docking
		The battery is completely discharged.	Re-activa battery. S Place DE the Dock by hand, after cha minutes, times; th normally
		Make sure the Docking Station is connected to the power supply.	The Dock is not cor the power
2	DEEBOT cannot return to the Docking Station.	The Docking Station is not correctly placed.	Refer to to correc Docking
3	DEEBOT gets stuck while working and stops.	DEEBOT is tangled with something on the floor (electrical wires, curtains, carpet fringing, etc.).	DEEBOT various v itself. If it unsuccess manually obstacles

	<p>DEEBOT returns to the Docking Station before it has finished cleaning.</p>	<p>When the battery gets low, DEEBOT automatically switches to Return to Charger Mode and returns to the Docking Station to recharge itself.</p>	<p>This is not a solution.</p>
		<p>Working time varies according to floor surface, room complexity and the Cleaning Mode selected.</p>	<p>This is not a solution.</p>



5	DEEBOT does not clean automatically at the scheduled time.	Time Scheduling function is cancelled.	Program clean at scheduled time using the App.
		The Continued Cleaning function is turned ON and DEEBOT has just finished cleaning the scheduled cleaning area.	This is not a solution.
		DEEBOT is switched OFF.	Switch ON.
		The robot's battery is low.	Keep DEEBOT switched ON and connected to the power source. Docking station: make sure the battery is fully charged at the scheduled time.
6	DEEBOT does not clean the whole area.	The robot's Suction Intake is blocked and/or there is debris stuck in its components.	Power OFF. Clean the Suction Intake and invert the Suction Intake. Clean the Suction Intake Brushes. Clean the Suction Intake Brush as described in section 4.
		The cleaning area is not tidy.	Remove debris from the cleaning area. Clean up the cleaning area before DEEBOT starts cleaning.
7	The water is not coming out of the Reservoir when DEEBOT is mopping.	The water inlet filter on the bottom of Reservoir is clogged.	Unscrew the water inlet on the bottom of the Reservoir. Clean the filter.
		The Reservoir runs out of water.	Add water to the Reservoir.



		The water outlets on the bottom of DEEBOT are clogged.	Check the outlets on the bottom of DEEBOT and clear them.
8	DEEBOT is not able to connect to the home Wi-Fi network.	Incorrect home Wi-Fi username or password entered.	Enter the correct home Wi-Fi username and password.
		DEEBOT is not within range of your home Wi-Fi signal.	Make sure DEEBOT is within range of your home Wi-Fi signal.
		Network setup started before DEEBOT was ready.	Turn ON the Wi-Fi Switch. Press the RESET button for 5 seconds. Wait for DEEBOT to be ready for network setup when the musical tone and the Wi-Fi Indicator flashes slowly.
		Your smartphone's operating system needs to be updated.	Update your smartphone's operating system. The ECO mode runs on iOS 10.0 and above, Android 5.0 and above.

Warning

This content is compiled from multiple sources and is provided for reference purposes only. It may not be complete or fully applicable to all situations. If you are unable to resolve your issue, please contact the product manufacturer or an authorized service provider for official support.

