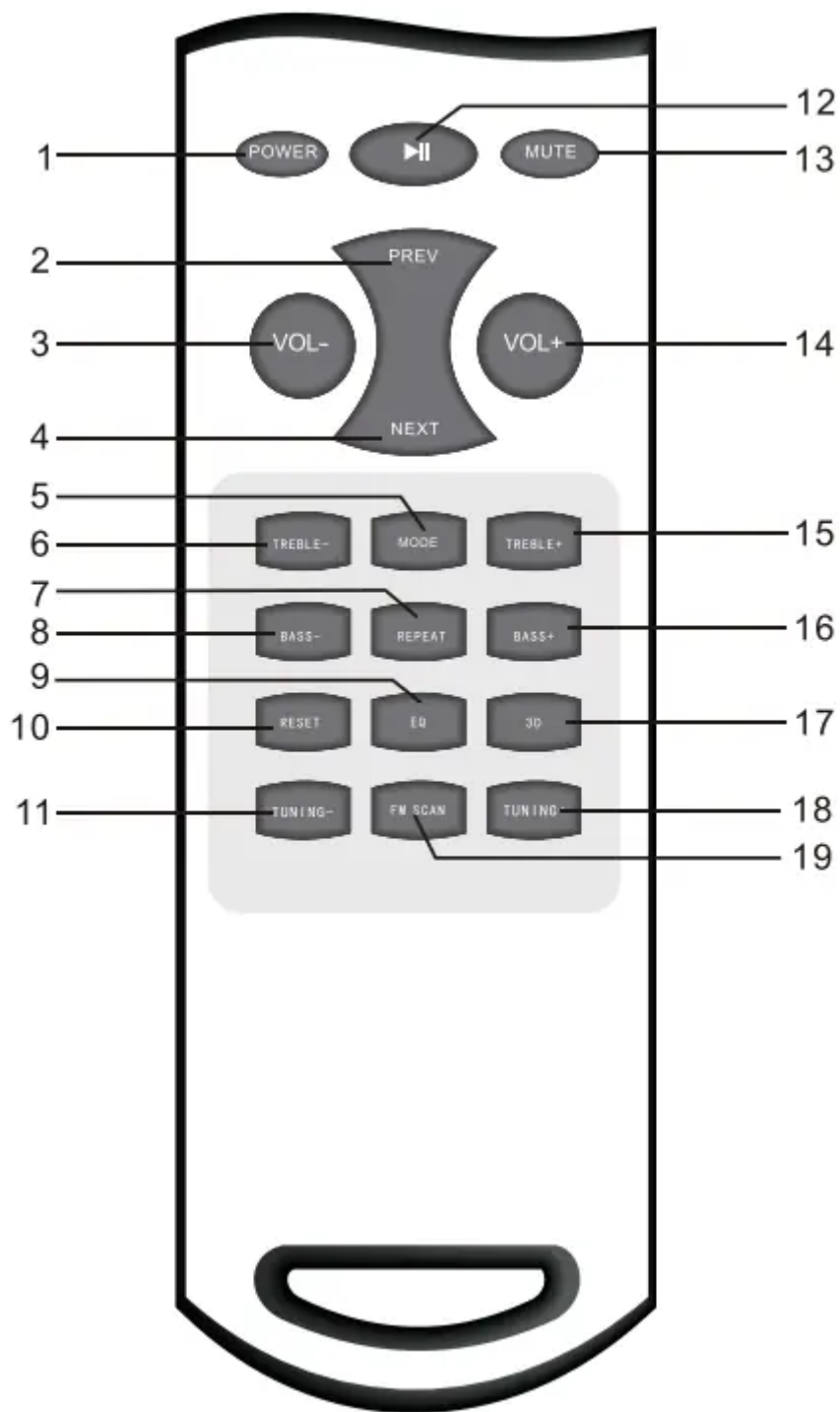


## Remote Control Description

### Using the remote control:

1. Battery spec: 2 x AAA, place the battery into the battery compartment, ensuring correct polarity. After inserting the battery, replace the battery compartment cover.
2. Remove the battery, if the remote control will not be used for a longer period of time as it might be damaged by leaking batteries.



**1. POWER**

Switch the unit between ON and STANDBYmode

**2. PREV**

Play previous song, or choose previous mode

**3. VOL-**

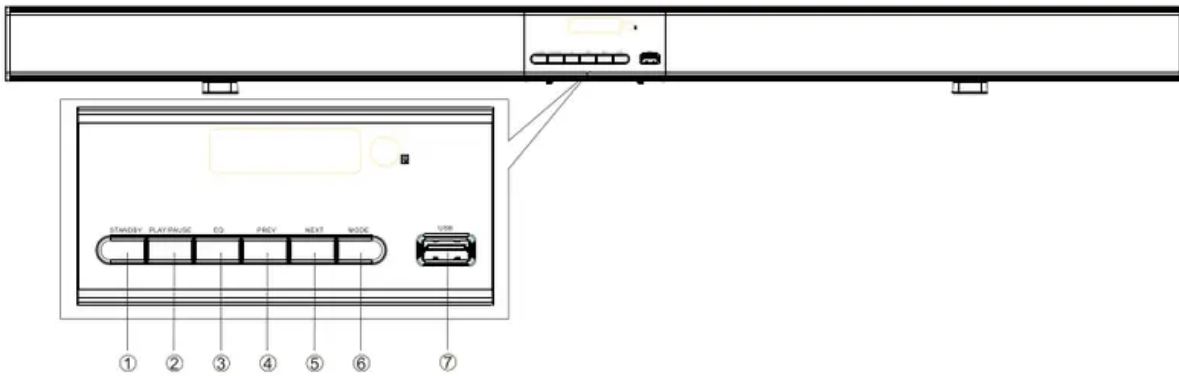
Reduce the volume



4. **NEXT**  
When playing music, it goes to the next song, or when selecting modes, choose the next mode
5. **MODE**  
The choices are: B/T,OPT, COA, AUX, FM; Ifyou plug in a USB device, the options would be:"B/T, USB,OPT, COA, AUX, FM"
6. **TREBLE-**  
Reduce treble
7. **REPEAT**  
In USB mode, press 'REPEAT' button once to repeat a single song ; press again to repeat all songs
8. **BASS**  
Reduce bass
9. **EQ**  
Sound mode switch
10. **RESET**  
Press to go back to the initial defaultsettings
11. **TUNING-**  
Press and release to tune channels manually. Press and hold to enter half auto channel state where it auto tunes to the available lower frequency
12. **PLAY/PAUSE**  
Play music/ Pause music
13. **MUTE**  
No sound
14. **VOL+**  
Increase the volume
15. **TREBLE+**  
Increase treble
16. **BASS+**  
Increase bass
17. **3D**  
3D sound effect switch
18. **TUNING+**  
Press and release to tune channels manually. Press and hold to enter half auto channel state where it auto tunes to the available higher frequency.
19. **FM SCAN**  
Press to auto search available channels

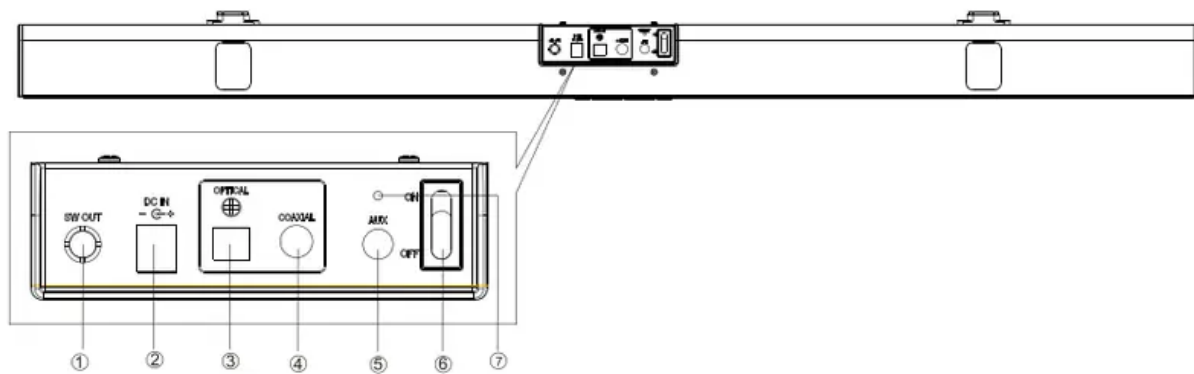
# Front/ Back panels

## FRONT



1. STANDBY
2. PLAY/PAUSE
3. EQ
4. PREV
5. NEXT
6. MODE
7. USB

## BACK

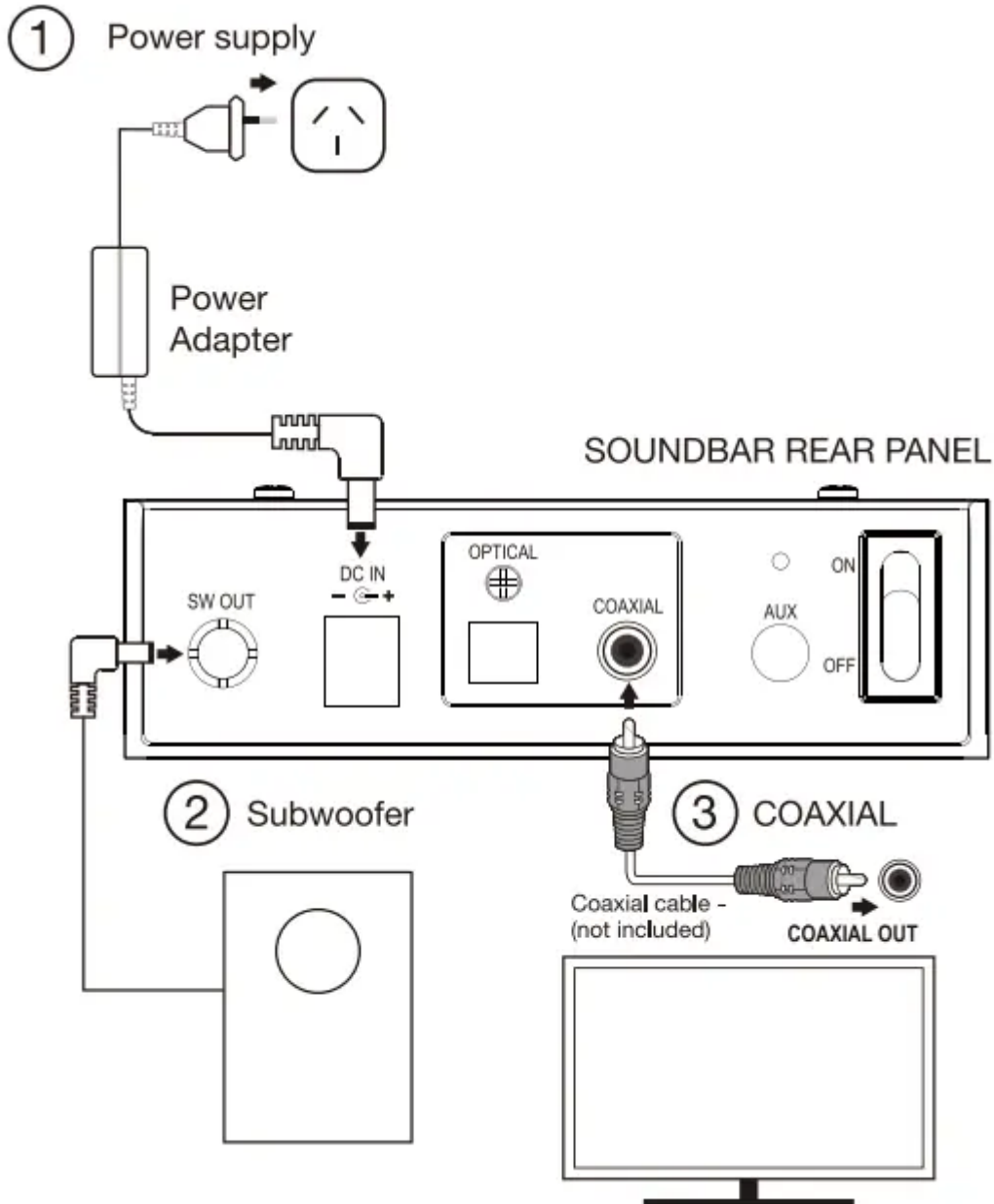


1. W OUT
2. DC 16V IN
3. OPTICAL
4. COAXIAL
5. AUX INPUT
6. POWER SWITCH
7. FM ANTENNA

## Connection schematic

### CONNECTING THE SOUNDBAR TO TV

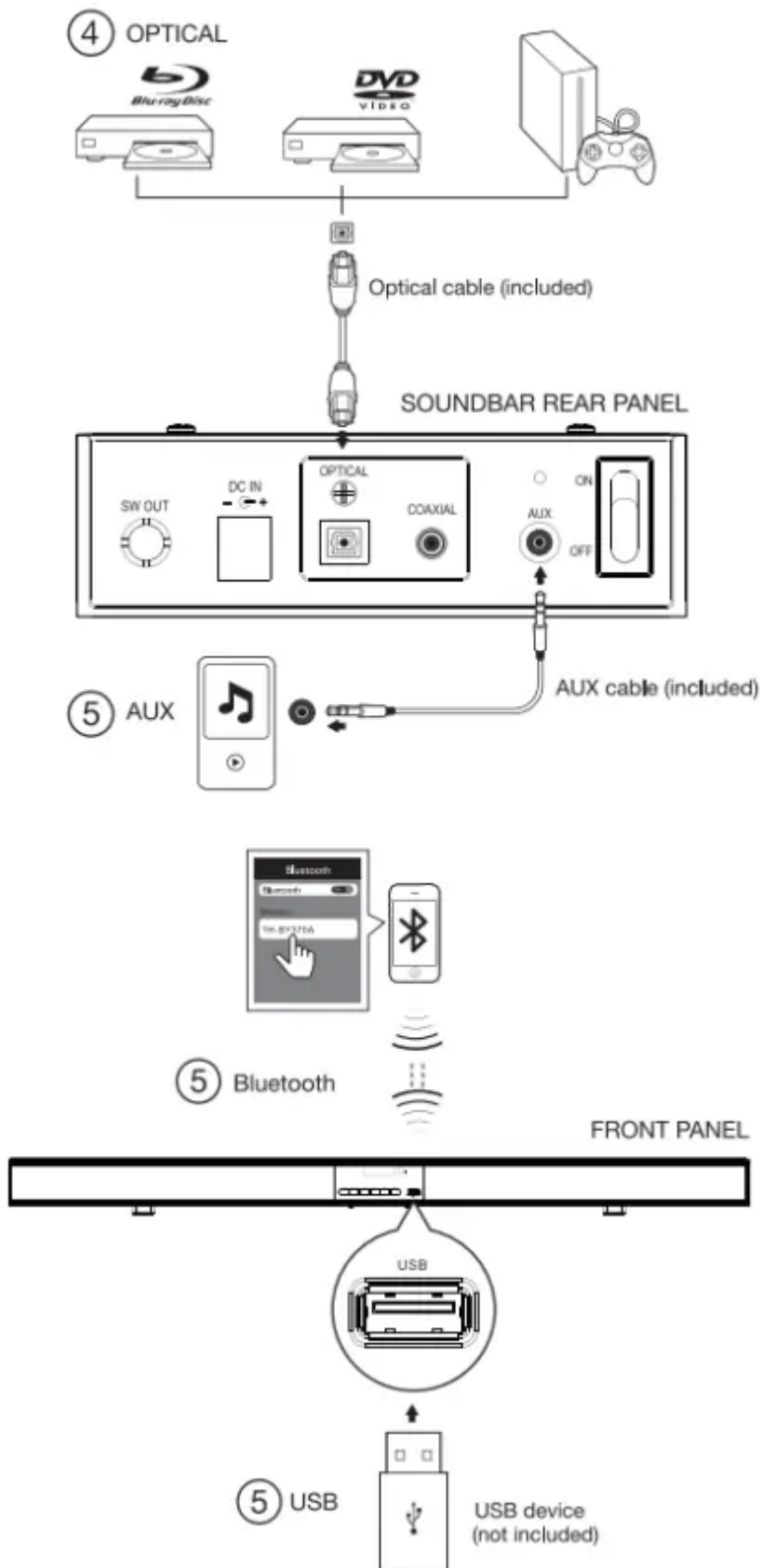
1. Power connection: First connect the DC output of the power adaptor to the soundbar, then plug in to the AC power outlet.
2. Subwoofer to SW OUT
3. Connection to TV: COAXIAL Input on the soundbar to COAXIAL Output on TV



### CONNECTING THE SOUNDBAR TO OTHER DEVICES

4. OPTICAL Input on the soundbar to OPTICAL Output of other devices (Blu-ray/ DVD player/ Gaming consoles)

5. Other audio sources: Bluetooth/ USB/ Aux



## Operating Instructions

1. **POWER ON:** Turn on the power switch on the back of the sound bar; the sound bar and subwoofer will now be in Standby mode. The indicator light on the front panel shows red.
2. **ON/ STANDBY:** Press the 'STANDBY' button on the front of the sound bar OR the 'POWER' button on the remote control to switch on the unit. The indicator light shows blue.

### Bluetooth Mode:

1. Press the 'MODE' button repeatedly until Bluetooth Mode is selected. Display shows BLUE.
2. On your Bluetooth-enabled device, choose 'TH-BY370A', the name of the sound bar. The indicator blinks indicating that it is pairing and there is a beep sound. Once pairing is successful, the indicator remains on.
3. Now you can play music from your Bluetooth-enabled device on the sound bar. Press the 'PREV/ 'NEXT' button on the remote control to play the previous or next song.

### USB Mode:

1. Connect a USB memory device to the USB port.
2. Press the 'MODE' button repeatedly until USB Mode is selected. Display shows 'USB'.
3. Now you can play music from the USB device on the sound bar.

### Notes:

- In any working state, the mode automatically switches to USB when the USB device is plugged in.
- The music will be played in the same order as on the USB disk. If song numbers are assigned, you can use numeric buttons on remote control to play a particular song.
- The USB device must be formatted in "FAT 16/FAT32/EXFAT", maximum size of device possible is 32G.
- Only mp3 formats can be played.

### Optical/ Coaxial/AUX mode:

1. Connect the device using any of these modes.
2. Press MODE button repeatedly until the corresponding mode is selected. Display shows 'OPT'/ 'COA'/ 'AUX'.
3. Now you can play music from the connected device on the sound bar.

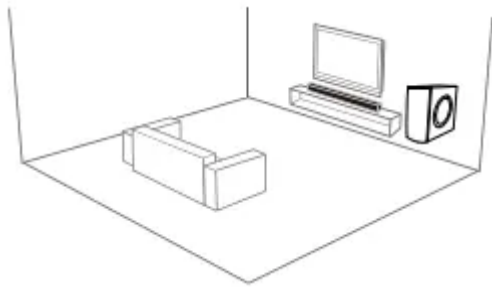
### FM Radio function:

1. Press 'MODE' button repeatedly until 'FM' mode is selected. The display shows station frequency.

2. Press 'FM SCAN' on the remote control to auto search the available channels. These channels are stored in working state.
3. Press 'TUNING -' and 'TUNING +' buttons to tune channels manually.
4. Press and hold 'TUNING -' or 'TUNING +' buttons to enter half auto search channel state. Here, it searches the available frequencies and stops at the next lower (TUNING-) or higher (TUNING+) frequency.

## Performance Parameters

### RECOMMENDED PLACEMENT



**Soundbar:** Under the TV(if wall-mounted)/ In front of the TV

**Subwoofer:** On the floor, alongside the TV (or in the front corner of the room)

<b>Speaker Specification</b>	
Cell	Speaker: 4cell ; Subwoofer: 1cell
Frequency range(HZ)±15	Speaker: 300~20000 ;Subwoofer: 20~300
Sensitivity(dB) (HZ)±3dB	Speaker: 83 ;Subwoofer: 88
Impedance ( $\Omega$ )±20%	Speaker: 4 ;Subwoofer: 4
Recommended power(w)	Speaker: 10 ;Subwoofer: 30
Main channel output power	10W+10W(4 $\Omega$ , 1KHz, 0.7%THD)
Bass output power	30W(4 $\Omega$ , 100Hz, 0.7%THD)
Main Channel frequency response	20Hz-20KHz $\pm$ 2dB
SNR	>75dB(AFR)
Input Voltage	16V $\pm$ 5%
Rated Power	50W
Maximum operating current	3.5A
Input signal source	Optical, AUX terminal, Bluetooth, USB, Coaxial
Distortion	$\leq$ 1%
Separation	$\geq$ 40dB
Dynamic Range	$\geq$ 90dB
Optical sampling frequency decoding	8KHZ-96KHZ DAC: 24BIT 96KHZ Stereo
Dimensions for sound bar	943*67*70mmm
Net weight for sound bar	1.9kg
Dimensions for subwoofer	160*320*265mm
Net weight for subwoofer	2.7kg
Power adaptor input	100-240V~ 50/60Hz

## Important Safety Instructions

**WARNING:** To reduce the risk of electric shock, do not dismantle the product and do not expose the product to rain or moisture. No user-serviceable parts inside. Refer servicing to qualified personnel only.

1. Read the user manual before use. Keep all instructions for future reference.
2. Always operate the product from a power source of the same voltage, frequency and rating as indicated on the rating label.
3. This product is intended for indoor, household use only.
4. To protect against electric shock: do not immerse unit, plug or cord in water or spray with liquids; do not place unit on windowsills or other places where it may be exposed to dripping or splashing of water; do not place vases or similar objects filled with liquids near the unit.
5. Do not use this product in the immediate vicinity of water, such as bathtubs, washbowls, swimming pools etc. where the likelihood of immersion or splashing occur.
6. Keep the unit away from heat sources like radiators, heat registers, stoves or other products that produce heat. No open flame sources like candles should be placed on the unit.
7. Use only with attachments/accessories not recommended can be hazardous.
8. This appliance is not intended for use by persons (including children) with reduced physical, sensory or mental capabilities, or lack of experience and knowledge, unless they have been given supervision or instruction concerning use of the appliance by a person responsible for their safety.
9. This product is not a toy! Children should be supervised to ensure that they do not play with the appliance.
10. Do not cover the unit during use. Do not impede vent openings with cloths, curtains or similar items.
11. Do not operate the product with a damaged cord or plug, or if the product malfunctions, or is dropped or damaged in any manner.
12. If the supply cord is damaged, it must be replaced by the manufacturer, its service agent or similarly qualified persons in order to avoid hazard.
13. For safety reasons, do not remove any covers or attempt to access the inside of the product.
14. Do not clean the unit with any harsh chemicals as this might damage the finish. Wipe clean with a dry cloth.
15. When removing the power plug from the wall outlet, always pull directly on the plug; never pull on the cord.

16. Do not expose the batteries to excessive heat, direct sunlight, fire or similar.
17. Do not throw used batteries in your household rubbish. Dispose of it responsibly according to local regulations.

**Warning**

This content is compiled from multiple sources and is provided for reference purposes only. It may not be complete or fully applicable to all situations. If you are unable to resolve your issue, please contact the product manufacturer or an authorized service provider for official support.