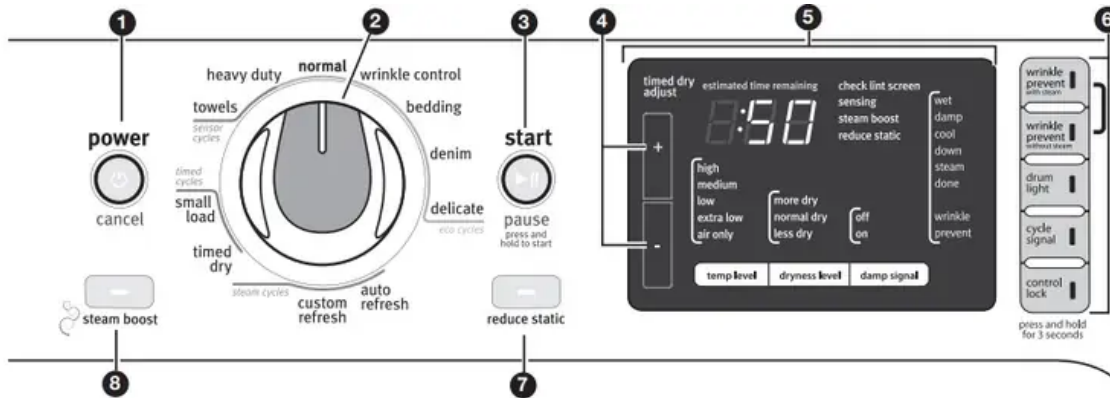
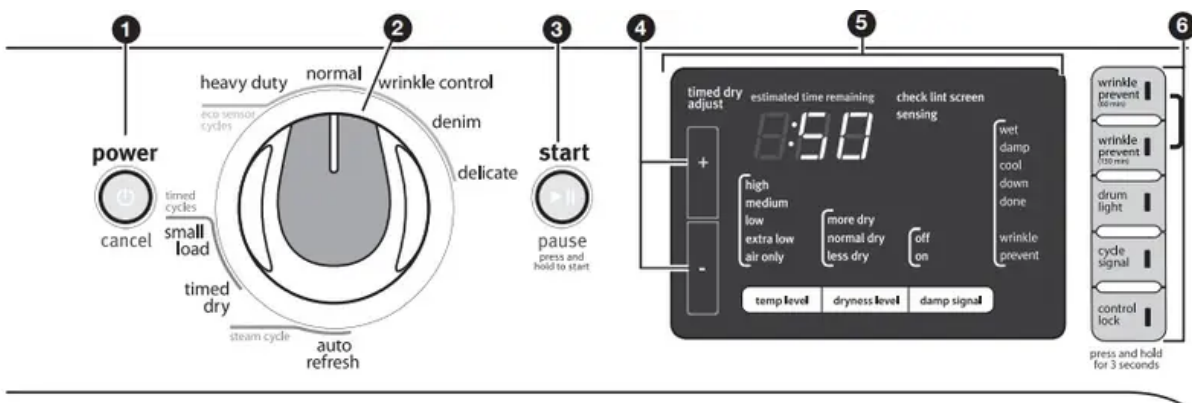


CONTROL PANEL AND FEATURES

11-cycle models



8-cycle models



1. POWER/CANCEL BUTTON

- Press to turn the dryer on and off. Press again to stop/cancel a cycle at any time.

2. CYCLE CONTROL KNOB

- Use your dryer's cycle control knob to select available cycles on your dryer. Turn the knob to select a cycle for your laundry load. See Cycle Guide for detailed descriptions of cycles.

3. START/PAUSE BUTTON

- Press and hold to start a cycle, or press once while a cycle is in process to pause it for up to 5 minutes.

4. TIMED DRY ADJUST for TIMED CYCLES

- Use these buttons with Timed Cycles to increase or decrease the length of a Timed Dry or Small Load cycle.

5. LED DISPLAY AND SETTINGS BUTTONS

When you select a cycle, its default settings will light up and the Estimated Time Remaining (for Sensor Cycles) or actual time remaining (for Timed Cycles) will be displayed.

Use the buttons along the bottom of the display to adjust settings. See Cycle Guide for available settings on each cycle. Not all settings are available with all cycles.

Cycle Status Lights

- The indicator bar at the top of the display will let you know what stage of the drying cycle is in process. For more information on each stage, see "Cycle Status Indicators".

Temp Level

- When using Timed Cycles or Auto Refresh, you may select a dry temperature based on the type of load you are drying. Use the warmest setting safe for the garments in the load. Follow garment label instructions.

NOTE: Sensor Cycles use a preset temperature that is not adjustable.

Dryness Level

- You may adjust the Dryness Level on Sensor Cycles, if desired. NOTE: Dryness Level is for use with Sensor Cycles only.

Damp Signal

- When selected, a signal will sound during the drying cycle when the load is damp but not completely dry. This will allow you to take clothes out of the load that do not need to dry completely. This option is available on Heavy Duty, Normal, Denim, Bedding, Wrinkle Control, and Delicate cycles.

6. OPTION BUTTONS

Use these buttons to select available options for your dryer. Not all cycles and options are available on all models

Wrinkle Prevent/Wrinkle Prevent with Steam (on some models)

- If you will be unable to remove a load immediately, press Wrinkle Prevent to add up to 150 minutes of periodic tumbling to help reduce wrinkling. On models with Wrinkle Prevent with Steam, a short steam cycle is added after 60 minutes to help smooth out wrinkles.

NOTE: On models with Wrinkle Prevent with Steam, you may turn off Steam by pressing and holding the Wrinkle Prevent button until - St appears in the display. The dryer will remember this setting for future loads. To turn Steam back on, press and hold the Wrinkle Prevent button again for several seconds.

Drum Light

- Press to turn the LED drum light on or off. The light will also turn on when the door is open, and turn off automatically after about 5 minutes.

Cycle Signal

- Use this button to turn the signal indicating the end of a drying cycle on or off, or to adjust the volume of the signal.

NOTE: You may also turn off the tones that sound when a button is pressed. Press and hold the Cycle Signal button for about one second to turn button sounds on or off.

Control Lock

- Use this button to lock the controls of the dryer and avoid an accidental change in cycle options or preferences during a drying cycle.

7. REDUCE STATIC (on some models)

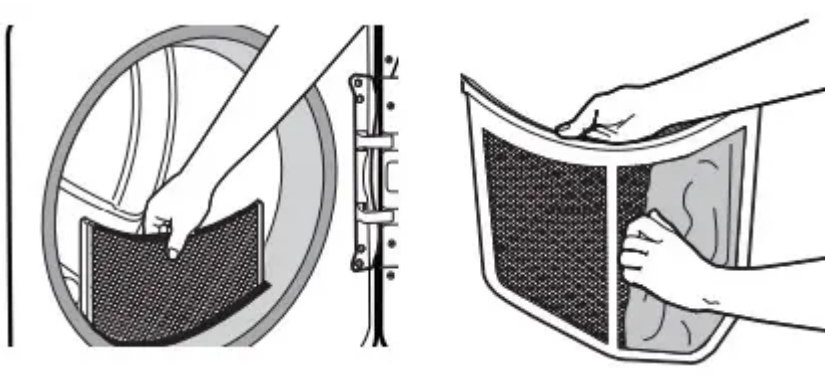
- Press to add the Reduce Static option to a Sensor cycle. The dryer will automatically tumble, pause, and introduce a small amount of moisture into the load to help reduce static. This option adds approximately 8 minutes to the total cycle time.

8. STEAM BOOST (on some models)

- Steam Boost adds steam to the end of the Heavy Duty, Bedding, Normal, or Denim cycle to help smooth wrinkles. Steam Boost can be used with High or Medium heat settings.

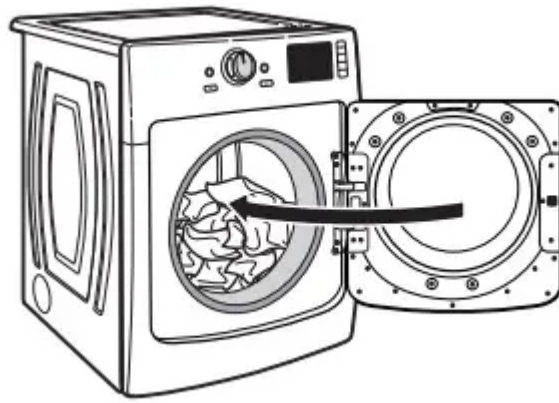
USING YOUR DRYER

1. Clean the lint screen



Clean the lint screen before each load. Pull the lint screen straight up. Roll lint off the screen with your fingers. Do not rinse or wash screen to remove lint. Wet lint is hard to remove. Push the lint screen firmly back into place. For additional cleaning information, see Dryer Care.

2. Load the dryer



Open the door by pulling on the handle. Place laundry in the dryer. Add a static reducing sheet to wet load, if desired. Close the door.

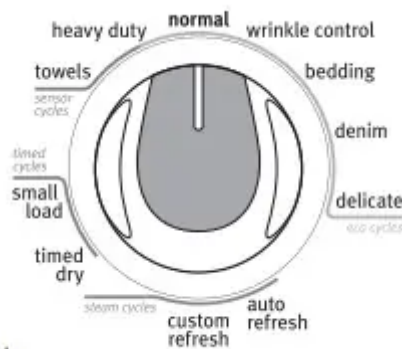
IMPORTANT: Do not overload the dryer. Items need to tumble freely. Overloading can lead to poor drying performance and may increase wrinkling and tangling.

3. Press POWER



Press the POWER button to turn on the dryer.

4. Select the desired cycle



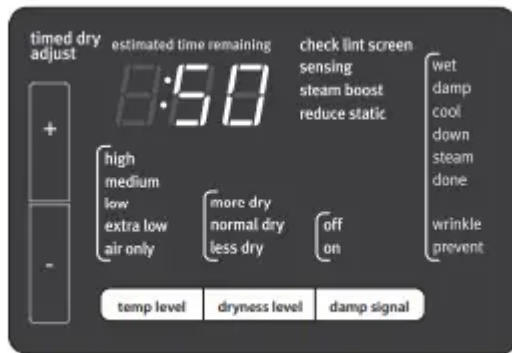
11-cycle model shown

Select the desired cycle for your load. See the “Cycle Guide” for more information about each cycle.

NOTE: Not all cycles are on all models.

5. Adjust cycle settings, if desired





11-cycle model shown

You may adjust different settings, depending on whether you have selected a Sensor Cycle, Timed Cycle, or Steam Cycle. See the Cycle Guide for detailed information.

NOTE: Not all options and settings are available with all cycles. Not all cycles are on all models.

Sensor Cycles:

- You can select a different dryness level, depending on your load, by pressing the button for More, Normal, or Less. Selecting More, Normal, or Less automatically adjusts the dryness level at which the dryer will shut off. Once a dryness level is set, it cannot be changed without stopping the cycle.
- Sensor cycles give the best drying in the shortest time. Drying time varies based on fabric type, load size, and dryness setting.

Timed Cycles:



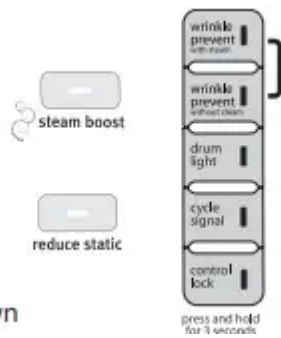
- When you select a Timed Cycle, the default time appears in the display. Use the + and - buttons to increase or decrease the time in 1 minute increments. Press and hold to change the time in 5 minute increments.
- The default temperature may be changed by pressing the Temp Level button until the desired dry temperature is lit.

Custom Refresh with Steam:

- The cycle time defaults to 15 minutes, for 1-4 items. For larger loads, you may add additional time up to 50 minutes, in 5 minute increments, using the Timed Dry Adjust + and - buttons.

6. Select any additional options





11-cycle model shown

Add additional options such as Reduce Static, Wrinkle Prevent/ Wrinkle Prevent with Steam and/or Steam Boost by pressing the button for that option.

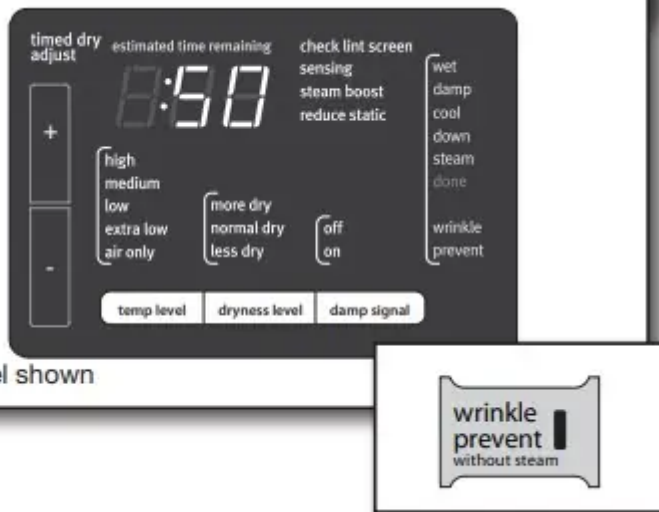
NOTE: Not all options and settings are available with all cycles.

7. Press and hold START/PAUSE to begin cycle



Press and hold the START/PAUSE button to begin the cycle.

8. Remove garments promptly after cycle is finished



11-cycle model shown

Promptly remove garments after cycle has completed to reduce wrinkling. If you will be unable to remove the load promptly, select the Wrinkle Prevent/Wrinkle Prevent with Steam option before pressing START/PAUSE.

Changing the Sensor Cycle settings to increase drying time

If all your loads on all Sensor Cycles are consistently not as dry as you would like, you may change the default settings to increase the default dryness level.



Your sensor drying settings can be adjusted to adapt to different installations, environmental conditions or personal preference. This change is retained and will affect all of your sensor cycles, not just the current cycle/load. There are 3 drying settings, which are displayed using the time display:

- 01 Factory preset dryness level.
- 02 Slightly drier clothes, 15% more drying time.
- 03 Much drier clothes, 30% more drying time.

To change the drying settings:

NOTE: The settings cannot be changed while the dryer is running or paused. The dryer must be in standby mode (the power button is off) to adjust the default settings.

1. Before starting a cycle, press and hold the Temp Level button for 6 seconds.
2. Press the Dryness Level button to select the dryness level shown in the time display: 01, 02, or 03.
3. Press START/PAUSE to save the new dryness level setting

DRYER CARE

CLEANING THE DRYER LOCATION

Keep dryer area clear and free from items that would block the air flow for proper dryer operation. This includes clearing piles of laundry in front of the dryer.

CLEANING THE DRYER INTERIOR

To clean dryer drum

1. Use a mild hand dish detergent mixed at a low concentration with very warm water, and rub with a soft cloth.
2. Rinse well with a wet sponge or towel.
3. Tumble a load of clean clothes or towels to dry drum OR Use a microfiber cloth and hot water in a spray bottle to clean the drum and a second microfiber towel to dry.

NOTE: Garments that contain unstable dyes, such as denim blue jeans or brightly colored cotton items, may discolor the rear of the dryer interior. These stains are not harmful to your dryer and will not stain future loads of clothes. Dry unstable dye items inside out to avoid transfer of dye.

REMOVING ACCUMULATED LINT

From Inside the Dryer Cabinet

- Lint should be removed every 2 years, or more often, depending on dryer usage. Cleaning should be done by a qualified appliance servicer or ventilation system cleaner.

From the Exhaust Vent

- Lint should be removed every 2 years, or more often, depending on dryer usage.

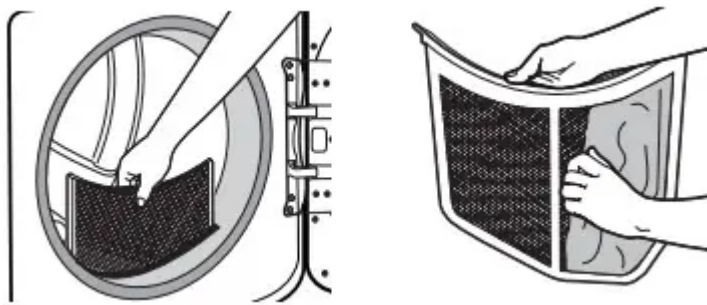
CLEANING THE LINT SCREEN

Every load cleaning

- The lint screen is located in the door opening of the dryer. The control panel has an indicator light to remind you to clean the lint screen before each load. A screen blocked by lint can increase drying time.

To clean

1. Pull the lint screen straight up. Roll lint off the screen with your fingers. Do not rinse or wash screen to remove lint. Wet lint is hard to remove.



2. Push the lint screen firmly back into place.

IMPORTANT:

- Do not run the dryer with the lint screen loose, damaged, blocked, or missing. Doing so can cause overheating and damage to both the dryer and fabrics.
- If lint falls off the screen into the dryer during removal, check the exhaust hood and remove the lint. See “Venting Requirements.”

As needed cleaning

- Laundry detergent and fabric softener residue can build up on the lint screen. This buildup can cause longer drying times for your clothes, or cause the dryer to stop before your load is completely dry. The screen is probably clogged if lint falls off while the screen is in the dryer.
- Clean the lint screen with a nylon brush every 6 months, or more frequently, if it becomes clogged due to a residue buildup.

To wash:

1. Roll lint off the screen with your fingers.
2. Wet both sides of lint screen with hot water.

3. Wet a nylon brush with hot water and liquid detergent. Scrub lint screen with the brush to



remove residue buildup.

4. Rinse screen with hot water.

5. Thoroughly dry lint screen with a clean towel. Reinstall screen in dryer.

VACATION, STORAGE, AND MOVING CARE

Install and store your dryer where it will not freeze. Because some water may stay in the hoses, freezing can damage your dryer. If storing or moving your dryer during freezing weather, winterize it.

Non-Use or Storage Care

Operate your dryer only when you are at home. If you will be on vacation or not using your dryer for an extended period of time, you should:

1. Unplug dryer or disconnect power.
2. Clean lint screen. See “Cleaning the Lint Screen.”
3. Turn off the water supply to the dryer. This helps to avoid unintended flooding (due to a water pressure surge) while you are away

Moving Care

For power supply cord-connected dryers:

1. Unplug the power supply cord.
2. Gas models only: Close shutoff valve in gas supply line.
3. Gas models only: Disconnect gas supply line pipe and remove fittings attached to dryer pipe.
4. Gas models only: Cap the open fuel supply line.
5. Steam models only: Shut off water faucet.
6. Disconnect the water inlet hose from faucet, then drain the hose. Transport hose separately.
7. Make sure leveling legs are secure in dryer base.
8. Use masking tape to secure dryer door.

For direct-wired dryers:

1. Disconnect power.
2. Disconnect wiring.
3. Steam models only: Shut off water faucet.
4. Steam models only: Disconnect the water inlet hose from faucet, then drain the hose. Transport hose separately.
5. Make sure leveling legs are secure in dryer base.
6. Use tape to secure dryer door

Reinstalling the Dryer

- Follow the “Installation Instructions” to locate, level, and connect the dryer.

TROUBLESHOOTING

Dryer Operation

Dryer will not run

- Door not closed completely.
 - Make sure the dryer door is closed completely.
- START/PAUSE button not pressed firmly or held long enough.
 - Press and hold the START/PAUSE button 2-5 seconds.
- Household fuse is blown or circuit breaker has tripped.
 - There may be 2 household fuses or circuit breakers for the dryer. Check that both fuses are intact and tight, or that both circuit breakers have not tripped. Replace the fuses or reset the circuit breaker. If the problem continues, call an electrician.
- Incorrect power supply.
 - Electric dryers require 240-volt power supply. Check with a qualified electrician.
- Wrong type of fuse.
 - Use a time-delay fuse.

Dryer will not heat

- Household fuse is blown or circuit breaker has tripped.
 - The drum may be turning, but you may not have heat. Electric dryers use 2 household fuses or circuit breakers. Replace the fuses or reset the circuit breaker. If the problem continues, call an electrician.

- Incorrect power supply.
 - Electric dryers require 240-volt power supply. Check with a qualified electrician.
- Supply line valve not open.
 - For gas dryers, make sure that the valve on the gas supply line is open.

Unusual Noise

Humming or whining noise with Steam cycle selected

- Water valve on dryer is running.
 - The water valve on the dryer is used during the Steam function. If the dryer has just been installed or unused for an extended period, the valve may be louder and run longer. This is normal.

Thumping noise

- Dryer hasn't been used in a while.
 - This is normal. The thumping sound should diminish after a few minutes of use.

Rattling or vibrating noise

- A small object caught between the edges of dryer drum.
 - Check the front and rear edges of the drum for small objects. Clean out pockets before laundering.
- Dryer isn't properly leveled.
 - The dryer may vibrate if not properly installed. See the Installation Instructions. All four dryer feet should be in firm contact with the floor.
- Clothing is balled up in dryer.
 - When balled up, the load will bounce, causing the dryer to vibrate. Separate the load items and restart the dryer

Clicking noise

- Gas valve operating.
 - On gas dryers, you may hear the gas valve clicking as it opens and closes. This is normal.

Dryer Results

Clothes are not drying satisfactorily or drying times are too long

- Lint screen is clogged with lint.
 - Clean lint screen before each load.

- The exhaust vent or outside exhaust hood is clogged with lint, restricting air movement.
 - Run the dryer for 5-10 minutes. Hold your hand under the outside exhaust hood to check air movement. If you do not feel air movement, clean exhaust system of lint or replace exhaust vent with heavy metal or flexible metal vent. See “Installation Instructions”.
- The exhaust vent is not the correct length.
 - Check that the exhaust vent is not too long or has too many turns. Long venting will increase drying times. See “Installation Instructions”.
- The exhaust vent diameter is not the correct size.
 - Use 4" (102 mm) diameter vent material.
- The Air Only temperature setting has been selected.
 - Select the right temperature for the types of garments being dried. See “Cycle Guide”.

Clothes are not drying satisfactorily or drying times are too long

- The load is too large and heavy to dry quickly
 - Separate the load to tumble freely.
- Fabric softener sheets are blocking the grille
 - The air outlet grille is just inside the door, behind the lint screen. Check that it is not blocked by a fabric softener sheet. Use only one fabric softener sheet, and use it only once.
- The dryer is located in a room with temperature below 45°F (7°C).
 - Proper operation of dryer cycles requires temperatures above 45°F (7°C).
- The dryer is located in a closet.
 - Closet doors must have ventilation openings at the top and bottom of the door. The front of the dryer requires a minimum of 1" (25 mm) of airspace, and, for most installations, the rear of the dryer requires 5" (127 mm). See “Installation Instructions”.

Cycle time is too short

- The load may not be contacting the sensor strips on Sensor Cycles.
 - Level the dryer. See “Installation Instructions”. All four dryer feet should be in firm contact with the floor.

- Clothes are coming out of the Refresh cycle with damp or wet spots.
 - Under certain environmental or installation conditions you may experience underdrying. Select the Auto Refresh cycle (22 min. default time), which can be customized by selecting High temperature. The cycle time will automatically be calculated based on the size of your load.
- The sensor cycle is ending early.
 - Change the dryness level setting on Sensor Cycles. Increasing or decreasing the dryness level will change the amount of drying time in a cycle. If loads are consistently ending too early, see also “Changing the Sensor Cycle settings to increase drying time”.

Lint on load

- Lint screen is clogged with lint.
 - Clean lint screen before each load.

Stains on load

- Improper use of fabric softener.
 - Add dryer fabric softener sheets at the beginning of the cycle. Fabric softener sheets added to a partially dried load can stain your garments. Do not use fabric softener sheets with steam cycles

Stains on drum

- Loose dyes in clothes.
 - Drum stains are caused by dyes in clothing (usually blue jeans). These will not transfer to other clothing.

Loads are wrinkled

- The load was not removed from dryer at the end of the cycle.
 - Select Auto or Custom Refresh cycle (on some models) to tumble the load with water and heat. This cycle is best for smoothing out wrinkles and reducing odors from loads consisting of wrinkle-free cotton, cotton polyester blends, common knits, and synthetic garments.
 - NOTE: Refer to garment care label instructions. Dry clean only garments are not recommended.
- The dryer was overloaded.
 - Dry smaller loads that can tumble freely. When using the Custom Refresh cycle (on some models), adjust the time based on the load size. Results may also vary depending on fabric type. This cycle is best for reducing wrinkles and

odors from loads consisting of wrinkle-free cotton, cotton polyester blends, common knits, and synthetics.

- For steam cycles, the water is not properly connected with the dryer.
 - Make sure water is connected to the dryer. Check that water inlet hose is connected to both the faucet and dryer's water inlet valve. Check that the water supply is turned on.

Odors

- Recent painting, staining, or varnishing in the area where your dryer is located.
 - Ventilate the area. When the odors or fumes are gone from the area, rewash and dry the clothing.
- For steam cycles, the water is not properly connected with the dryer.
 - Make sure water is connected to the dryer. Check that water inlet hose is connected to both the faucet and dryer's water inlet valve. Check that the water supply is turned on.
- Odors are left in garments after wearing.
 - To remove odors left in garments after wearing, select Auto Refresh. This cycle is best for reducing wrinkles and odors from loads consisting of wrinkle-free cotton, cotton polyester blends, common knits, and synthetics.

Load too hot

- Load removed before cooldown portion of cycle complete.
 - Allow the dryer to complete the cooldown portion of the cycle before removing the load.
- Using Timed Dry cycle with a high temperature setting.
 - Select a Sensor cycle with a lower heat setting to avoid overdrying the load.

Dryer Displaying Code Message

"PF" (power failure)

- The drying cycle has been interrupted by a power failure.
 - Press and hold START to restart the dryer.

“L2” Diagnostic Code (low or no line voltage condition)

- There may be a problem with your home power supply keeping the dryer’s heater from turning on.
 - The dryer will continue to run when this diagnostic code is present. Press any key to clear the code from the display and return to the estimated time remaining.
 - Try the following: Check to see if a household fuse has blown or circuit breaker has tripped. Electric dryers use two household fuses or breakers. Replace the fuse or reset the circuit breaker.
 - Confirm the power cord is properly installed. Refer to “Installation Instructions” for details.
 - Select a Timed Dry heated cycle, and restart the dryer.
 - If the message persists, consult a qualified electrician.

“AF” (low airflow condition)

- The lint screen or vent is clogged; the vent is crushed or kinked or has too many turns.
 - The dryer will continue to run when this diagnostic code is present. Press any key to clear the code from the display and return to the estimated time remaining. Try the following:
 - Clean lint screen.
 - Check to see if the vent run from the dryer to the wall is crushed or kinked.
 - Confirm the vent run from the dryer to the wall is free of lint and debris
 - Confirm the exterior vent exhaust hood is free of lint and debris. Confirm your vent system falls within the recommended run length and number of elbows for the type of vent you are using. Refer to “Plan Vent System” in the Installation Instructions for details.
 - Select a Timed Dry heated cycle, and restart the dryer. If the message persists, have your entire home venting run cleaned.

“F# E#” (F1 E1, F3 E1, etc.) variable service codes.

- The dryer is in need of service.
 - If a code beginning with an “F” appears in the display. Alternating between F# and E#, the dryer control has detected a problem that requires service. Call for service.



Warning

This content is compiled from multiple sources and is provided for reference purposes only. It may not be complete or fully applicable to all situations. If you are unable to resolve your issue, please contact the product manufacturer or an authorized service provider for official support.

Document generated by [ManualsFile](#)