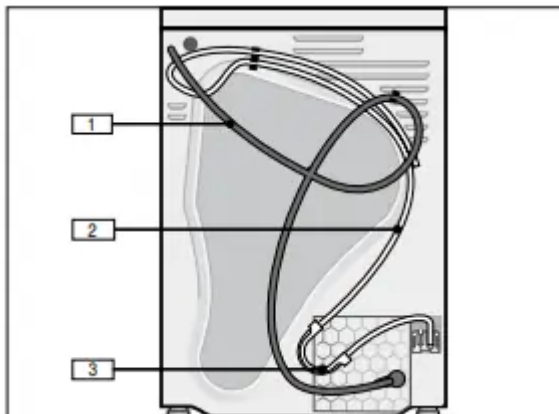


Installation Instructions

Parts provided with your dryer

Back side of the dryer



1. *Power cord with plug*
2. *Drain hose connected to the dryer*
3. *Elbow to form the hose to fit the drain*

Dryer drum contents

A literature pack is shipped in the dryer drum. Be sure to remove this item before using the dryer.



4 literature pack contents:

User Manual and Product Registration

(2) plastic ties for securing drain hose

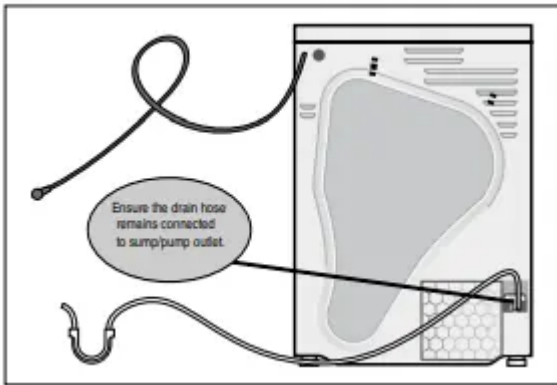
Plastic connector

Summary of drain hose installation instructions

NOTICE: If any parts are missing please notify your dealer immediately.

Installation - step by step

1. Unpack the dryer.
2. Remove all objects from the dryer drum.
3. Check the dryer for visible damage.
4. Position the dryer near the installation location.
5. Disconnect the power cord and drain hose from their clips on the back of the dryer.



NOTICE: Do not reuse an old or different drain hose. Only use the drain hose included with the dryer.

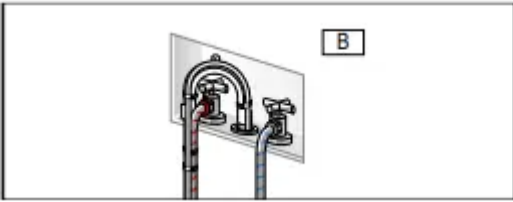
6. Connect the outlet end of the drain hose to a standpipe or other drain inlet. Examples are shown below.

Examples of connections:

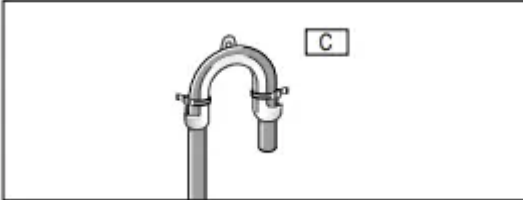
1. Fasten the dryer drain hose to the washer drain/elbow as shown in picture "A". Secure with plastic ties supplied.



2. Place drain hose assembly into standpipe as shown in picture "B".

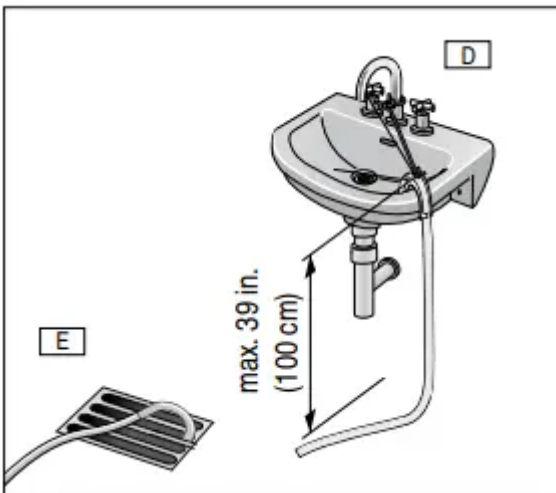


Sink/Basin or Floor drain: If using the elbow supplied on the hose re-position elbow closer to the drain end of hose and fasten with the plastic ties as shown in picture “C”.



Secure hose and/or elbow as shown below. Sink “D” or floor “E”.

NOTICE: Examples shown are for reference only. Not all fittings, connectors, nuts, brackets, ties, etc. are supplied to accommodate every application.

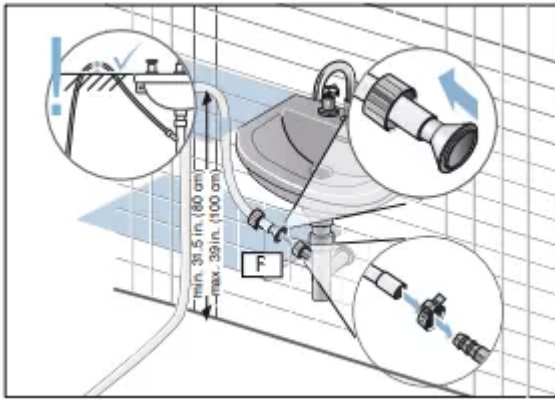


Maximum height of drain is 39 in. (100 cm).

Sink Drain Pipe:

Attach and secure drain hose as shown below in picture “F”.

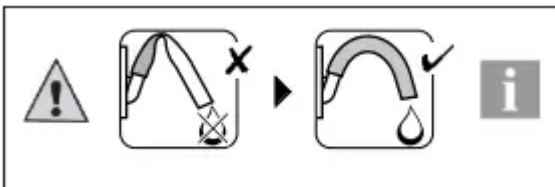
Use a standard hose clamp which can be purchased from your local hardware store.



Minimum height of drain for installation shown above is 31.5 in. (80 cm). Maximum height of drain is 39 in. (100 cm).

NOTICES

- Examples shown are for reference only. Not all fittings, connectors, nuts, brackets, ties, etc. are supplied to accommodate every application.
- Ensure there are no kinks or crimps along the entire length of hose.



If installed in an upper floor of a multi-story building, the dryer should be installed on a drained floor to prevent water damage to lower floors in the event of a leak.

Leveling the dryer

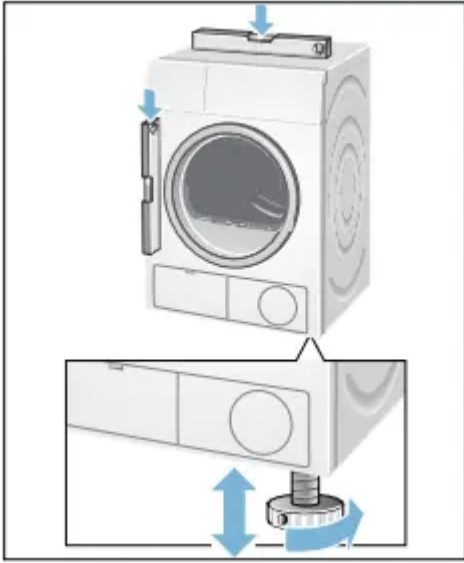
Importance of leveling the dryer

It is important that your dryer is level and that all four dryer feet press with equal pressure against the floor. This will help assure the quietest, most vibration-free use of your dryer.

To adjust the dryer feet:

1. Install the dryer on a level and solid surface, preferably in a corner of a room.
2. If the floor is uneven (or not level) adjust the dryer feet as required to level the dryer. Do not place anything under the dryer feet to help level the dryer.
3. Extend the dryer feet no more than is necessary. The more the feet are extended, the more vibration the dryer will experience. Start with the dryer feet turned all the way in and adjust each foot as necessary.
4. Use a bubble level to check the top of the dryer to make sure it is level side to side and front to rear.

5. Press down on each corner of the dryer top to make sure the dryer does not "wobble". There should be no "give" or movement. All four dryer feet should press equally against the floor. This is just as important as the dryer being level to prevent vibration.



Check heating system

1. Check that the drum is empty.
2. Close the dryer door.
3. Switch the dryer to Cotton Extra Dry and then touch the Start/Pause button.
4. After 2-3 minutes touch the Start/Pause button and open the door.
 - If the interior of the dryer feels warm, the dryer has been connected properly. Switch the dryer to Off.
 - If the dryer does not work, switch the dryer to Off. Look in the Troubleshooting section of this user manual for hints in solving the problem.

Preparing to transport the dryer - step by step

1. Rotate the program selector to Off.
2. Pull out power supply plug.
3. Place any accessories in the drum.
4. Close the door and secure with adhesive tape.
5. Screw the height-adjustable feet of the dryer into the housing to prevent them from being damaged during transportation.

Reversing the door - step by step

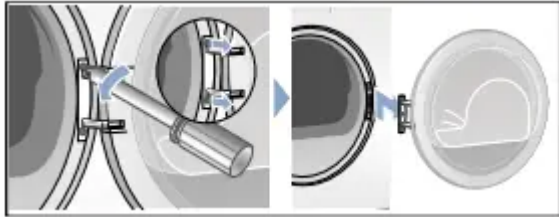
Tip: To reverse your dryer door side:

- Use only T20 (Torx) type screw driver to remove and reinstall door screws.
- Do not use any other tools to reverse the door (hinge or latch).

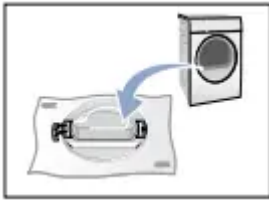
1. Rotate the program selector to Off, pull out power supply plug and open the door fully.



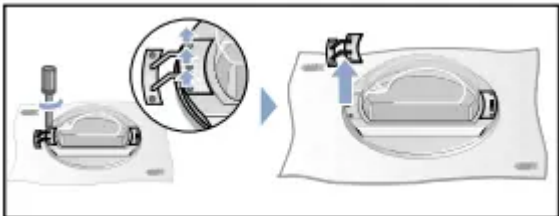
2. Remove the screws from the door and pull out the door from the dryer.



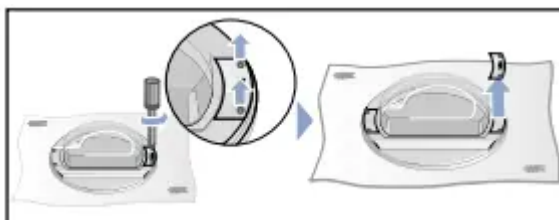
3. Put the door on a flat, smooth, but secured surface, e.g. on a towel or dishcloth lying down on the floor or table.



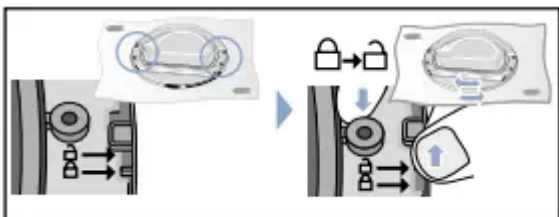
4. Remove screws from the hinge insert and then remove it from the door.



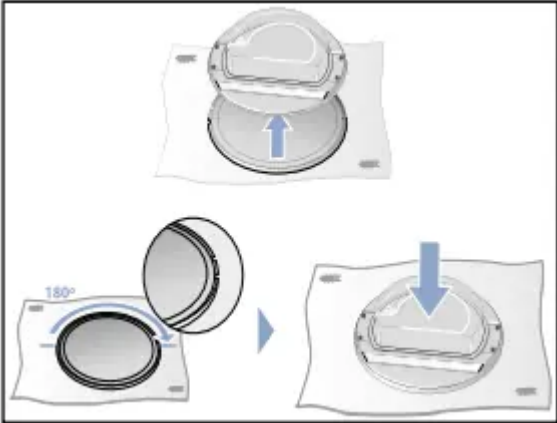
5. Remove screws from the hook insert and then remove it from the door.



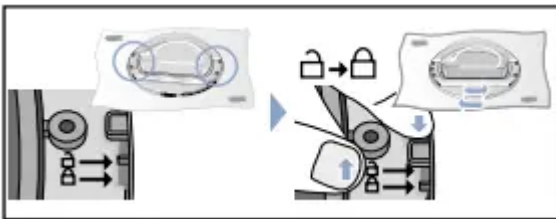
6. Follow the instructions at images below to unlock the door ring.



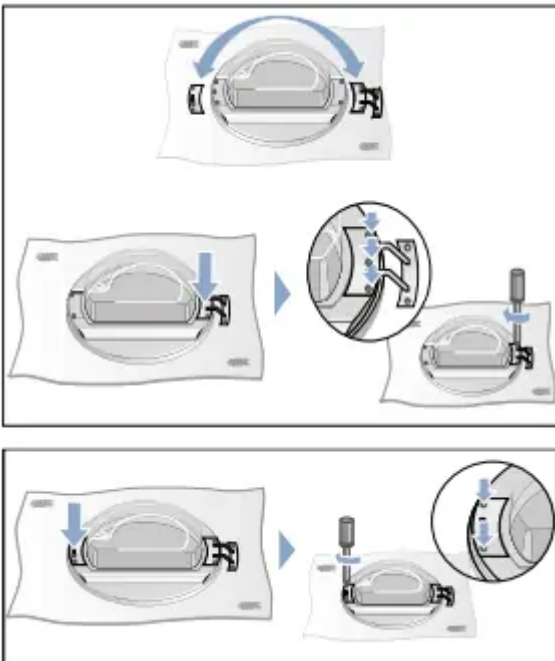
7. Separate the door and ring then reverse the ring and fit the door and ring back together.



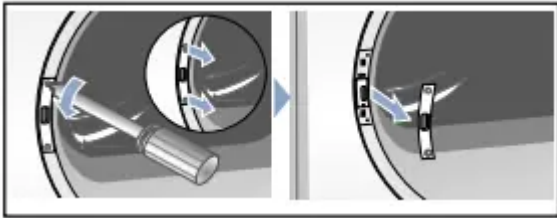
8. Follow the instructions at images bellow to lock the door ring.



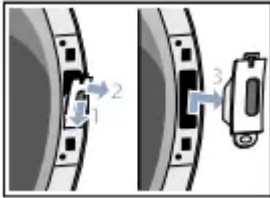
9. Prepare the hinge insert and the hook insert to install and then screw them following the instructions below.



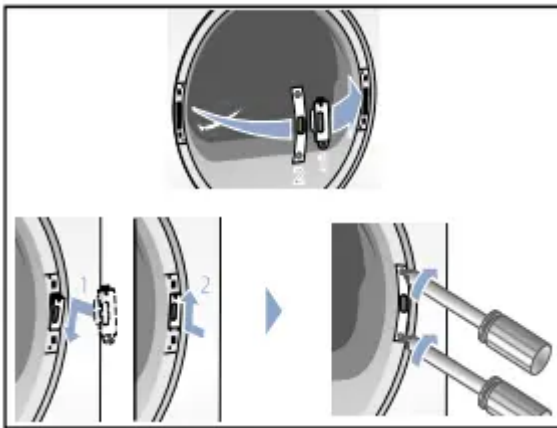
10. Remove screws from the door lock cover and then remove it from the dryer.



11. Remove the door lock from the dryer.



12. Install the door lock (1) and then door lock cover (2) at the opposite site of the door seal.



13. Screw the door to the dryer.

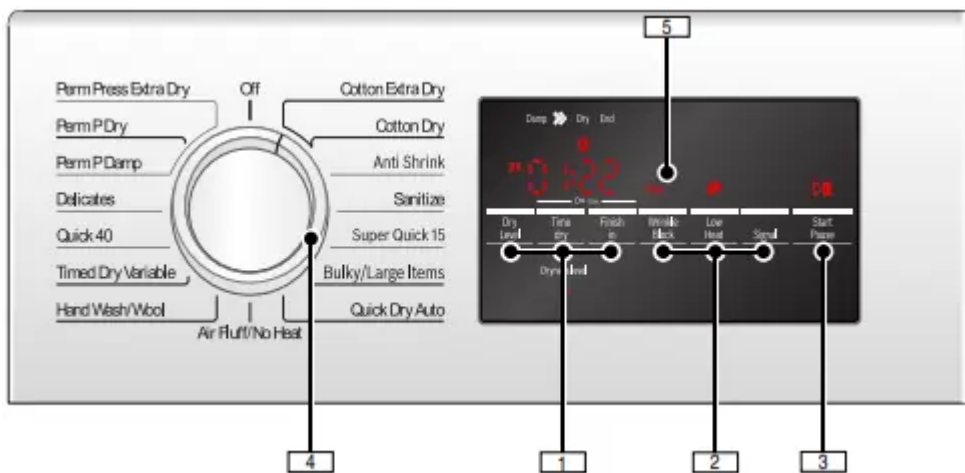


14. You can now put in the power supply plug and close the door to start operating the dryer.



Getting to know your appliance

Control panel



1. Dry Level, Time dry, Finish in

Selectable Option Settings for customizing Programs as desired.

Indicator Symbol lights or desired time is displayed if setting is active.-> Default Program and Option settings; Page 30

2. Wrinkle Block, Low Heat, Signal

Additional option settings.

Indicator Symbol lights if setting is active.-> Additional Program Option settings; Page 30

3. Start/Pause

- starts or pauses the selected cycle;
- indicator lamp on (steady) - cycle running, can be paused;
- indicator lamp blinking - options can be changed; cycle can be started; door is closed; cycle is in Pause mode.

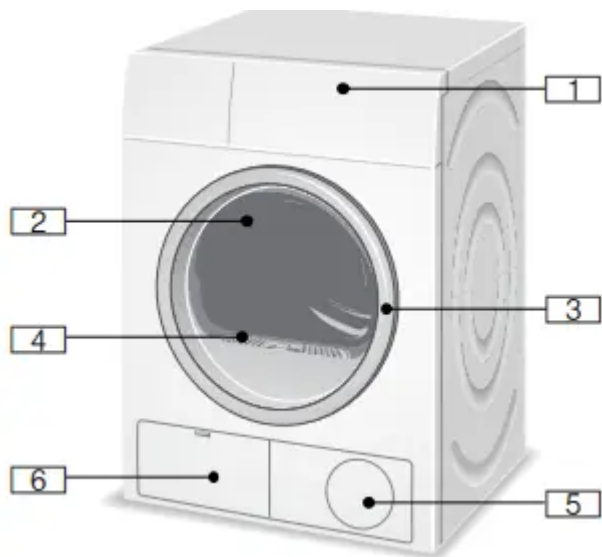
4. Program Selector

Selecting a program and switching on/off; turns in both directions.

5. Display area for settings and information.

Operating Instructions

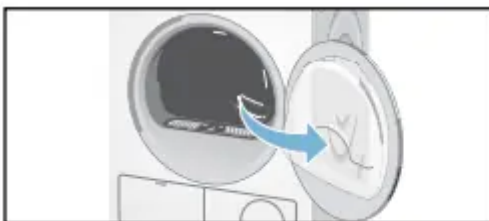
Your new dryer



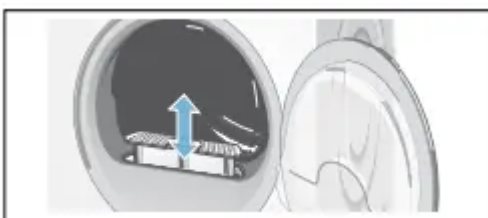
1. Control panel, display area, program selector

2. Drum with interior light (depending on model) The interior light activates after the door is opened and after the program starts, it switches off automatically.

3. Open the door Close the door

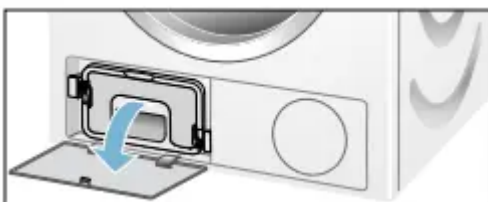


4. Lint filter

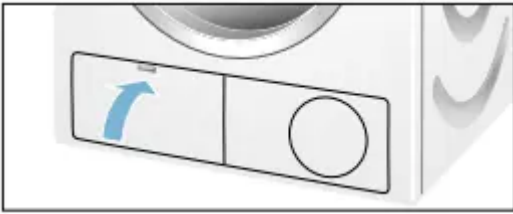


5. Air inlet

6. Open the maintenance flap



Close the maintenance flap



Heat exchanger



Before using the dryer for the first time

1. Read these operating instructions carefully.
2. Check that the supply voltage corresponds with the voltage specifications on the rating plate on the dryer, see top rear side of the dryer and/or rating plate label inside of the dryer door. -> Electrical Connections; Page 15
3. Remove all objects from the drum.
4. Check the dryer for visible damage. If damage found contact your dealer.
5. Wipe the inside of the drum with a damp cloth.
6. Check heating system. -> Check heating system; Page 18
7. If the dryer does not work, switch the dryer to Off. Look in the Troubleshooting section of the operating instructions for support. -> Troubleshooting; Page 35

Temporary disconnection of the dryer

Operate your dryer only when you are at home. If you intend going on vacation or are not using your dryer for an extended period of time, you should:

1. Turn off the circuit breaker.
2. Pull out the power supply plug if possible.
3. Clean the lint filter.

Using the program selector to choose a drying cycle

NOTICE: If the Child lock is activated, you must deactivate it before you can select a program. -> Childproof lock; Page 26

Use the program selector to select the desired drying program. The dial turns in both directions and when a cycle is selected its time duration appears in the display.

Program selection

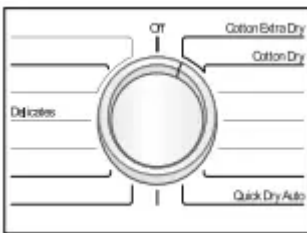
For optimum drying results your dryer offers several different types of programs to choose from. Select the required drying program from the program table according to the examples.
-> Program selection table; Page 29

Automatic programs

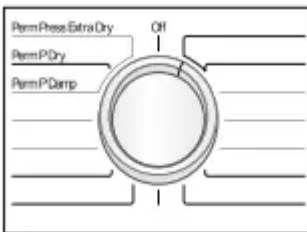
There are automatic programs for different types of textiles (regular/cotton, permanent press).

The program sequence of automatic programs is controlled by sensors. The duration of the program depends on the measured degree of moisture in the laundry and on the selected degree of dryness (e.g. Cotton Dry or Cotton Extra Dry).

- Regular/Cotton

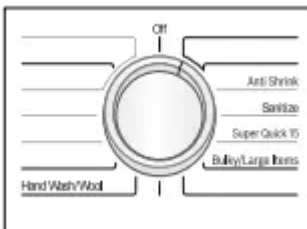


- Permanent Press



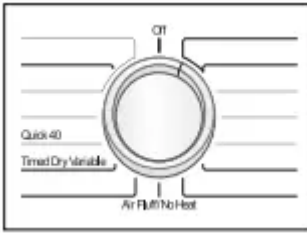
Special programs

The programs Sanitize, Jeans, Anti Shrink, Super Quick 15, Towels, Bulky/Large Items and Heavy Duty (depending on model) are made for special type fabric loads. -> Program selection table; Page 29



Time programs

Time programs run at specific temperatures. Suitable for pre-dried, multi-ply, delicate textiles or individual small items. Also for subsequent drying.-> Default Program and Option settings; Page 30



Selecting program settings and additional options

By selecting program settings and additional options, you can adjust the drying process to better suit the items you are drying.

The settings can be selected and deselected depending on the cycle progress.



The indicator lamps of the buttons light up if the setting is active.

For Time dry, Finish in, Wrinkle Block, Low Heat and Signal the settings are not retained after the appliance is switched off.

-> Default Program and Option settings; Page 30

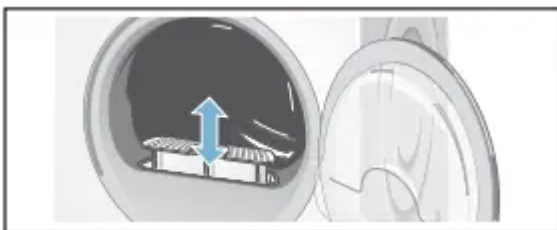
-> Additional Program Option settings; Page 30

For Dry Level the setting is retained after the appliance is switched off.

-> Dry Level; Page 30

Loading the laundry

1. Check lint filter.



The filter should be cleaned after or before every drying process. Cleaning the filter reduces the drying time and saves energy. -> Cleaning the lint filter; Page 32

2. Load the laundry into the drum and close the door.

Tip: If the door has not been closed properly, the dryer will not start.



Tips

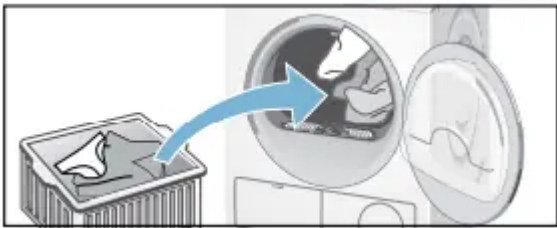
After loading, close the door carefully so as not to trap any items between the door and the rubber seal. The door should close until a click is heard.

Foreign objects left in the drum may damage laundry. Before inserting any laundry, check to make sure no foreign objects are in the drum.

Recommended Load Size

Recommended maximum load size can be found in the program selection table in this manual. -> Program selection table; Page 29.

Load the laundry



Place laundry in the empty drum. Put each piece of laundry into machine separately.

For best results the laundry to be dried must be sorted according to type of laundry and desired degree of drying.

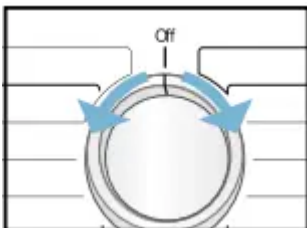
-> Program selection table; Page 29

-> Sorting the laundry; Page 28

-> Dry Level; Page 30

Starting the program

1. Rotate program selector to the desired program. Select the program which corresponds to the laundry in the dryer from Program selection table. -> Program selection table; Page 29




The Start/Pause indicator light starts flashing.

2. Touch the Start/Pause button. Indicator lamp lights up and the cycle starts.



During the cycle, the display area indicates the estimated remaining time and symbols showing the cycle progress are lit.

NOTICES

- If you want to protect the cycle against inadvertent adjustment, select the Childproof lock. -> Childproof lock; Page 26
- If  indicator lights up, clean the lint filter and/or heat exchanger. -> Cleaning the lint filter; Page 32 -> Cleaning the heat exchanger; Page 33
- If DR indicator lights up, check the drain hose and its connection. -> Maintenance of drain hose; Page 34

3. If required, select Low Heat by pressing the button. -> Additional Program Option settings; Page 30

4. If required, select Wrinkle Block by pressing the button. -> Additional Program Option settings; Page 30

Tip: The estimated remaining time will be updated.


Indicator of program sequence

Bosch dryers use an advanced control system which continually monitors the laundry's remaining moisture. The current state of the process and status of the program is shown by indicator lights (Damp, =, Dry, End).



Childproof lock

You can secure the dryer against inadvertent changing of the set functions. To do this, activate the childproof lock after cycle start.

To Activate/Deactivate, touch Time dry and Finish in buttons at the same time for 3 seconds. In the display field, you will see the  symbol light indicating the childproof lock is active.

NOTICE: The childproof lock will remain activated until the next cycle start even after switching the machine off. You must deactivate the childproof lock before the next cycle and, if necessary, activate it again after starting the cycle.

Selecting a different program

If you have inadvertently started the wrong program, you can change this as follows:

1. Touch Start/Pause.
2. Select another program.
3. Touch Start/Pause. The new drying cycle starts from the beginning.

Cancel program

If required, you can cancel the selected program:

1. Touch Start/Pause.
2. Rotate the program selector to Off.

Program end



End appears in the display area and the Start/Pause button indicator lamp is off.

After the program end, rotate the program selector to Off.

Removing laundry/switching the appliance off

1. Open the door and remove the laundry.
2. Turn the program selector to the Off position. Appliance is switched off and dryer light goes out.
3. Clean lint filter.-> Cleaning the lint filter; Page 32
4. Close the door.

Tip: If the display panel switches off and the Start/Pause button indicator is blinking at the end of a program, the Energy-saving mode is active. To activate the display, press any button. -> Environmentally friendly use of your dryer; Page 8

Laundry

Preparing the laundry

NOTICE: Damage to the appliance/fabrics.

Foreign objects (e.g. coins, paper-clips, needles, nails) may damage the laundry or components in the dryer. Therefore, note the following tips when preparing your laundry:

- Empty all pockets to ensure no loose debris (coins, keys, other hard objects and cigarette lighters) are placed in the dryer drum.

- Close any fasteners (such as zippers, hooks and eyelets) that could cause laundry to catch or become entangled. Button up covers. Tie cloth belts, apron strings, etc. together or use a laundry bag.
- Remove any foreign objects or non-washable parts.
- The drum must be empty prior to loading textiles.

Sorting the laundry

Check the care labels on each laundry item prior to drying. They provide valuable information as well as limitations about laundry process (temperature etc.) to help you choose an appropriate cycle.

Do not dry the following textiles in the dryer:

- air-tight textiles (e.g. rubberized),
- delicate fabrics (silk, synthetic curtains).

Drying tips

- To ensure a uniform drying result, sort the laundry according to fabric type and drying program.
- Always dry very small items (such as socks and handkerchiefs) and underwired bras together with large items of laundry or in a laundry bag.
- Do not over-dry easy-care laundry - risk of wrinkling! Allow laundry to finish drying in the air.
- Do not iron laundry immediately after drying. Place the laundry in a pile for a short while. Residual moisture will then be distributed uniformly.
- Knitted fabrics (e.g. T-shirts, jerseys) often shrink when tumble-dried for the first time. Do not use the Extra Dry program.
- Only dry wool fabrics with the use of drying rack. To refresh or fluff up wool articles use the Hand Wash/ Wool program and remove load from dryer and layout on flat surface to finish drying.
- For pre-dried, multi-layered fabrics or small, individual items of laundry, use the Time program. -> Program selection table; Page 29 Also suitable for subsequent drying.
- Some detergents and textile care products, starch or softeners may contain chemicals that may become deposited on the moisture sensors negatively affecting their function and the drying results.
- When washing laundry to be tumble-dried, use the correct amount of detergent and textile care products as specified in the manufacturer's instructions.
- Clean the moisture sensor regularly -> Cleaning the moisture sensors; Page 34.

Cleaning and maintenance

Cleaning the housing and control panel

Wipe the housing and fascia with a soft cloth and soapy water only.

Wipe the drum, door seal and inside of the door with a damp cloth only.

NOTICE: Do not clean with a water jet.

Remove detergent and cleaning agent residue immediately.

During drying, water may occasionally accumulate between the window and the seal. This does not affect the proper operation of your dryer.

Cleaning the lint filter area

Over time, lint from the drying process collects in the lint filter area.


This lint can be easily removed using a vacuum cleaner.



Cleaning the lint filter

A dirty filter extends the drying time and increases energy consumption.

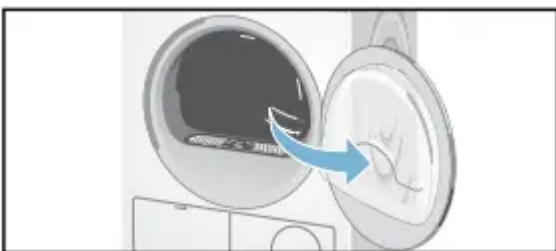
The filter should be cleaned before or after each drying process.

If  indicator lights up during a drying program, clean the filter immediately.

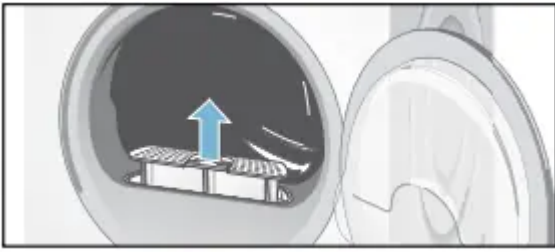
Tip: The program interrupts automatically.

To clean the lint filter:

1. Press the center of the Program Selector to switch off the appliance.
2. Open the door.



3. Pull out filter.

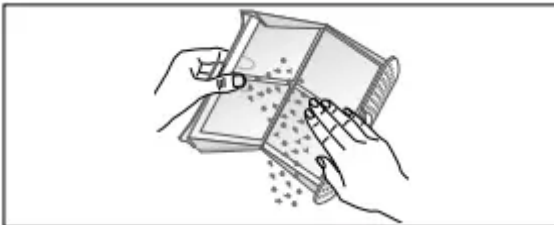


Remove the fluff from the fluff filter recess. Ensure that no fluff falls into the open shaft.

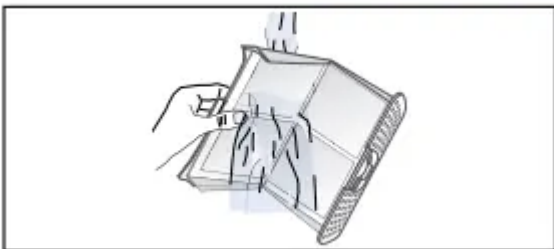
4. Open the filter.



5. Remove fluff (run hand over filter).

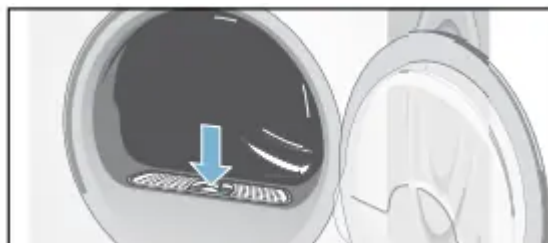


NOTICE: Severely dirty or clogged lint filter should be rinsed under warm running water.

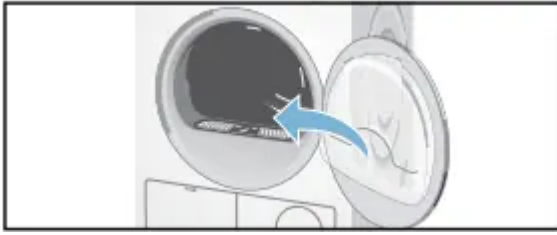


The filter must be dried thoroughly before being placed back into dryer.

6. Close the filter and re-insert it.



7. Close the door.



Cleaning the heat exchanger

The heat exchanger requires periodic cleaning (recommended once per month under normal drying conditions). The frequency of cleaning depends on the amount and type loads being dried.

To clean the heat exchanger:

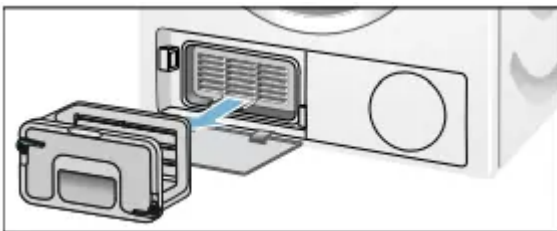
1. If the dryer is hot, run on Air Fluff/No Heat program to allow the dryer to cool down.
2. Residual water may escape, place an absorbent cloth under the maintenance flap.
3. Unlock the maintenance flap and open it completely.



4. Turn both locking levers towards each other.

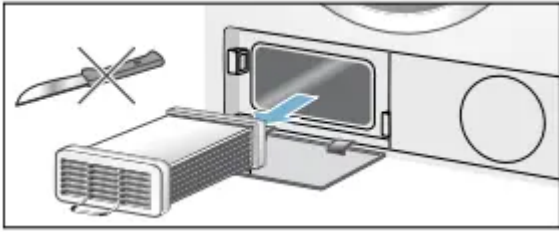


5. Pull out the heat exchanger cap.



6. Remove the heat exchanger.

NOTICE: Do not damage the heat exchanger! Clean with warm water only. Do not use hard or sharp edged objects!



7. Rinse the heat exchanger and the cap on all sides with a jet of water to completely remove all of the lint and fluff.

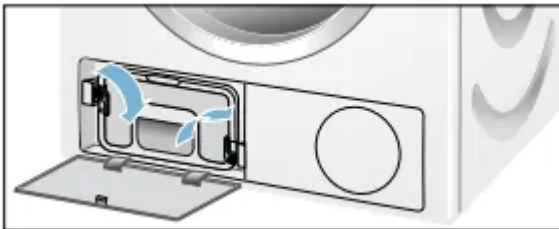


8. Remove all lint and fluff from the seals on the dryer and heat exchanger.

9. Allow the cap and the heat exchanger to dry fully.

10. First insert the heat exchanger, then the cap.

11. Turn back both locking levers.



12. Close the maintenance flap until it locks into position.



13. Look in the Troubleshooting table to reset the maintenance indication. -> Troubleshooting;
Page 35

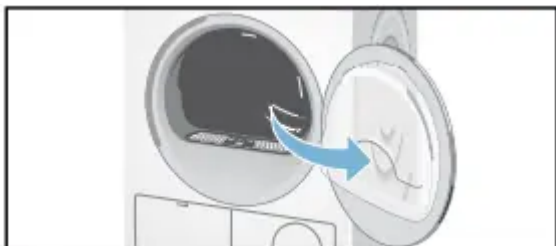
Cleaning the moisture sensors

The dryer is equipped with a stainless-steel moisture sensor. The moisture sensor measures how damp the laundry is.

After long periods of usage the moisture sensor may become covered by a fine layer of limescale or residues of detergents and textile care products. Such residues must be removed regularly as the sensor function and in consequence the drying result may be impaired.

To clean the moisture sensors:

1. Open the door.



2. The deposit on the sensors can easily be removed by wiping the sensors (the two bars next to the lint filter) with a cloth and a little white vinegar.



NOTICE: Use white vinegar only!

Clean the moisture sensors once a month.

Maintenance of drain hose

If DR indicator lights up check the drain hose for kinks, restrictions or blockage.

NOTICE: If DR indicator still lights up after the maintenance, you should contact customer service or your local dealer.

Troubleshooting

Before calling customer service, check whether you can rectify the fault yourself by means of the following table.

If a fault cannot be rectified or a repair is required:

1. Set program selector to Off.
2. Disconnect the dryer from the power outlet.
3. Call customer service. -> Customer service; Page 4

General Troubleshooting

Often when you encounter a problem it will be something minor. Before you call customer service, consider the suggestions and instructions below:

NOTICE: The troubleshooting items listed below can help you resolve minor issues with your dryer quickly and without the necessity of a service call.

Determining the Problem

Dryer does not start. Start/Pause indicator light does not illuminate.

- Power cord end not inserted at all or not inserted correctly.
Insert power cord end correctly.
- A fuse is blown or breaker is tripped.
Replace fuse or reset breaker.
- Start/Pause button not touched.
Touch Start/Pause button.
- Door not closed properly.
Check if laundry is caught in the door. Close the door until a click is heard.
- Program not selected.
Rotate the program selector to desired program. -> Program selection table; Page 29

The display panel and indicator lights go out, Start/Pause indicator light flashes.

- Energy-saving mode is activated.
Touch any button to activate the display. -> Environmentally friendly use of your dryer; Page 8

The display panel and Start/Pause indicator switch off.

- Sleep mode after setting the Finish in option is activated.
Touch any button to activate the display.

indicator light up.

- Lint filter dirty.
Clean lint filter. -> Cleaning the lint filter; Page 32 Touch the Start/Pause button to reset the displayed indication and then touch Start/Pause button again to reset the appliance if necessary.
- Heat exchanger dirty.
Clean heat exchanger. -> Cleaning the heat exchanger; Page 33 Touch the Start/Pause button to reset the displayed indication and then touch Start/Pause button again to reset the appliance if necessary.

DR indicator light up. Water has not drained completely.

- Drain hose is blocked.
Check drain hose. -> Maintenance of drain hose; Page 34 Check drain hose connection conditions.

Water is leaking out.

- Dryer is not leveled.

Level the dryer. -> Leveling the dryer; Page 17

- The heat exchanger seal is dirty.

Clean the heat exchanger seal. -> Cleaning the heat exchanger; Page 33

- Drain hose is leaking.

Check entire length of drain hose for leaks; replace if necessary.

Check that hose is clamped on hose barb at back of the dryer securely.

Program terminates shortly after starting.

- Laundry is not loaded.

Load the laundry. -> Loading the laundry; Page 25

- Load too small for selected program.

Use time program. -> Program selection table; Page 29

- Loaded laundry is too dry.

Check the loaded laundry. If it is dry, open the door, remove laundry and turn program selector to Off.

The door opens by itself.

- The door not closed properly

Close the door until a click is heard.

Creasing.

- Laundry load exceeded. Unsuitable program selected.

Do not exceed the maximum load for selected program. Remove items of laundry immediately after the end of the program, hang them up and pull into shape. Turn program selector to Off. -> Program selection table; Page 29 Select Wrinkle Block button to prevent the laundry from creasing or wrinkling. -> Wrinkle Block; Page 30

Drying result is not satisfactory (laundry feels too damp)

- Warm laundry may feel more damp than it really is.

Remove items of laundry immediately after the end of the program and turn the program selector to Off.

- The selected program does not suit the load.

Use another drying program or, in addition, select the time program. -> Program selection table; Page 29

- Dryness level is not adjusted.

Use Dry Level to adjust the dryness level. -> Dry Level; Page 30

- Fine layer of limescale or detergent and textile care products residues on the moisture sensors.

Clean the moisture sensors. -> Cleaning the moisture sensors; Page 34

- Program termination e.g. main power supply failure, door open or maximum drying time reached.

See the problem(s) mentioned in this table.

- Initial load is too wet.

Spin laundry at higher speed in the washing machine, before drying.

Switch off the dryer, and then turn it on again.

Drying time too long.

- Lint filter and/or Heat Exchanger is dirty.

Clean lint filter -> Cleaning the lint filter; Page 32 and/or Heat Exchanger. -> Cleaning the heat exchanger; Page 33

- Insufficient supply of air. Air inlet possibly blocked.

Ensure that air can circulate.

Do not obstruct the air inlet on the front of the dryer.

- Ambient temperature higher than 95°F/35°C.

Ventilate the room.

Program does not start Finish in (remaining) time is displayed.

- A delayed starting time has been selected and activated.

Drying cycle will begin at proper time to complete at the selected Finish in time.

Program does not start - symbol lit up.

- Childproof lock is activated.

Deactivate Childproof lock. -> Childproof lock; Page 26

One or more indicator lights are flashing.

- Lint filter or/and heat exchanger is dirty.

Clean lint filter or/and heat exchanger (see solution of the problem(s) in this table above).

- Installation conditions are not adequate.

Check the installation conditions. -> Electrical Connections; Page 15

- Fault in program sequence or malfunction.

Switch off the dryer, allow it to cool down, switch back on and restart the program.

Power failure.

Remove laundry from the dryer immediately and spread out. This allows the heat to dissipate. Be careful as the door, the drum and the laundry may be hot.

Warning

This content is compiled from multiple sources and is provided for reference purposes only. It may not be complete or fully applicable to all situations. If you are unable to resolve your issue, please contact the product manufacturer or an authorized service provider for official support.