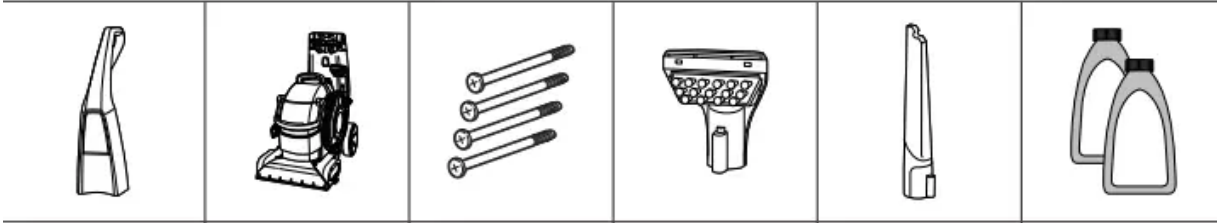
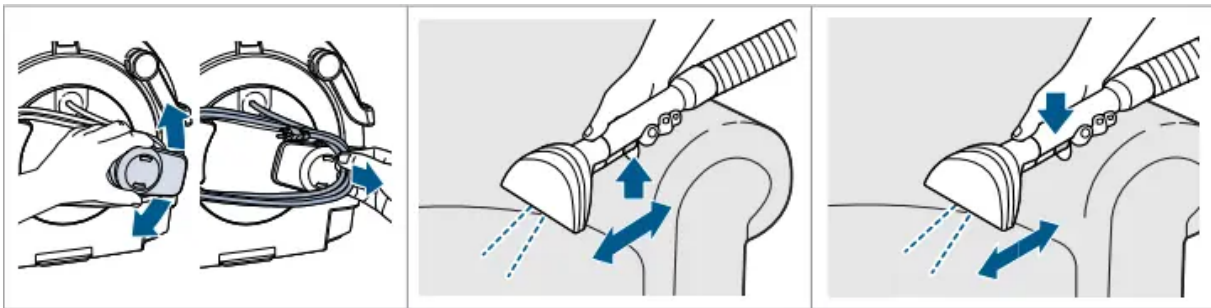


What's in the Box?

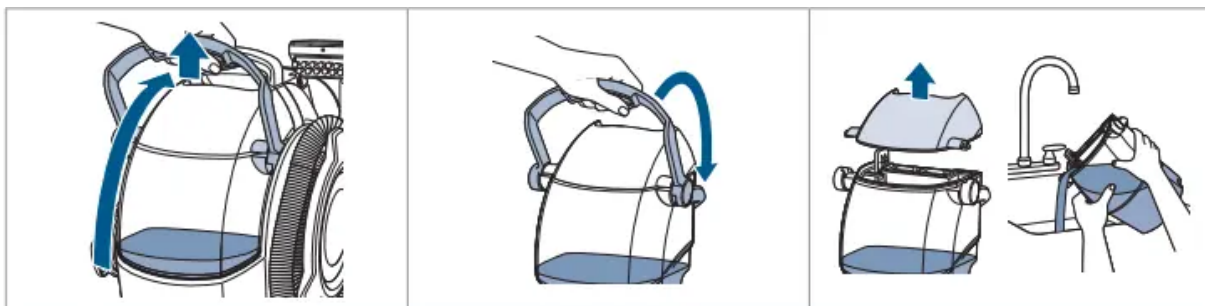
Standard accessories may vary by model. To identify what should be included with your purchase, please refer to the "Carton Contents" list located on the carton top flap.



Assembly



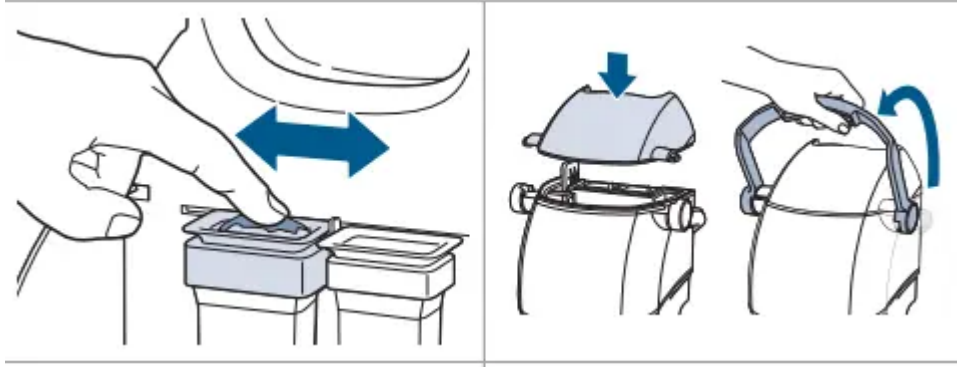
1. Slide the Upper Handle onto the body of the machine by guiding the 2 posts on the body into the opening on the Upper Handle.
2. Firmly holding the Upper Handle in place, screw 2 screws into the marked holes at an upward angle. Screw the remaining screws into the outermost holes under the support handle.
3. Wrap Power Cord around Quick Release™ Cord Wrap.



4. Wrap Flex Hose around the hose wrap and secure with latch.
5. Align the portable spot & stain cleaner and push down firmly until it's secured. Plug the machine in and turn ON to make sure the Upright Cleaning Mode Indicator Light illuminates. If it does not, remove and reseal the portable cleaner so it's secure.
6. Snap attachment(s) into the back of machine. Note: Portable spot & stain cleaner must be fully secure to operate in upright cleaning mode.

Cleaning Formulas

Keep plenty of BISSELL® formulas on hand so you can clean whenever it fits your schedule. Always use genuine BISSELL formulas in your machine. Other formulas may harm the machine and void the warranty. Do not use Hard Floor Formula on area rugs or carpet.



Clean + Refresh

- Powerful cleaning and odor elimination with Febreze freshness

PET Stain & Odor

- Removes tough pet stains
- Includes StainProtect™ to protect against future stains
- PRO MAX

Clean + Protect

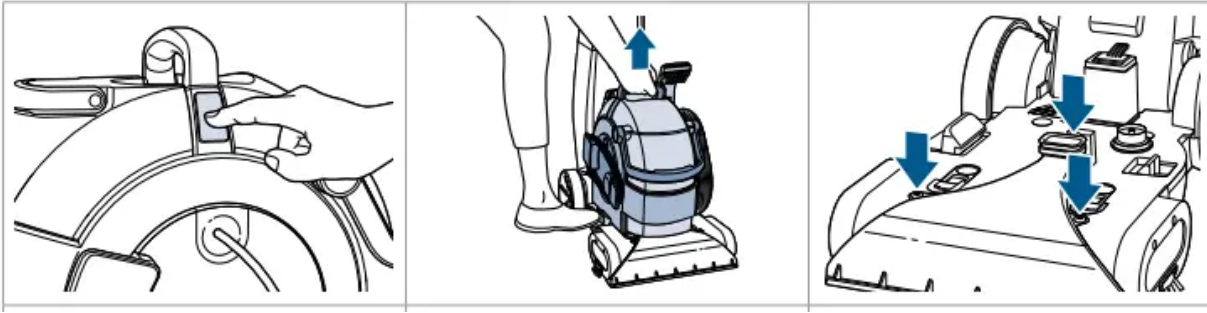
1. Our most powerful formula for tough, ground-in dirt & stains
2. Includes StainProtect to protect against future stains

PET PRO OXY

1. Urine Eliminator
2. Our best formula for pet urine stains odors
3. Includes StainProtect to protect against future stains
4. Pet Stain & Odor
5. Antibacterial
6. Cleans and controls odor causing bacteria

Pretreat

Pretreat spots and stains to improve carpet cleaning performance.



PET Stain

Pretreat

Removes tough pet stains & odors with

Enzyme Action

PET PRO

OXY Stain

Destroyer

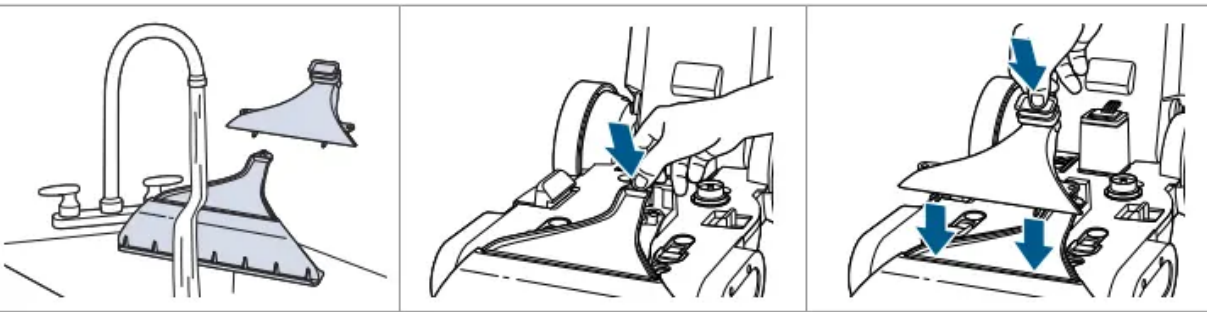
Removes tough pet stains & odors with OXY

PET Pretreat

Sanitize

Penetrates to sanitize and loosen tough stains

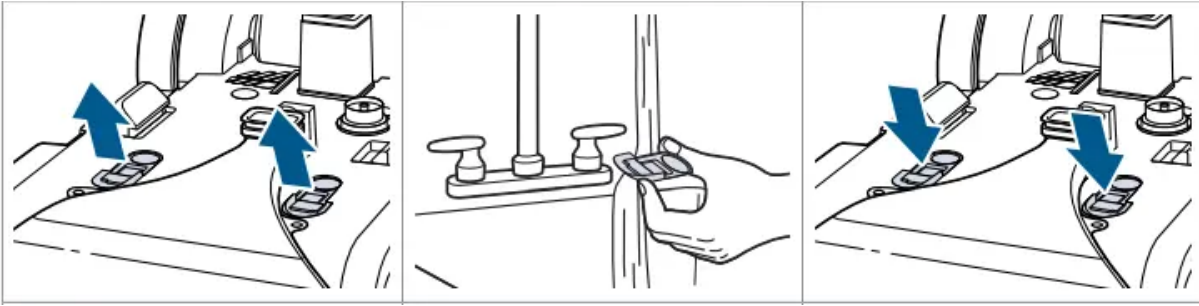
Filling the Clean Water Tank



1. Remove tank from the base of the machine.

2. Unscrew the black cap and remove bottle insert.

3. Fill tank with warm (60°C/140°F MAX) tap water to the water fill line. Do not boil or microwave water as it can destroy the tank.

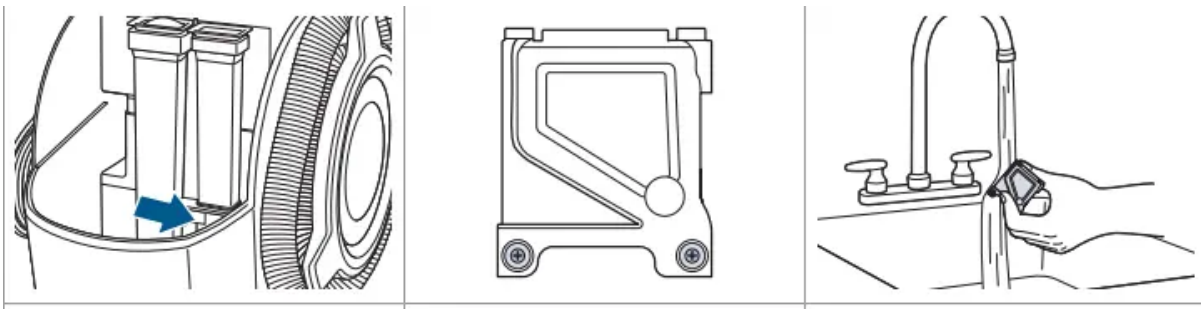


4. Add 2 ounces of BISSELL® formula to the tank.
5. Replace the cap and return the tank to the machine.

Cleaning Your Carpet



1. Plug into a proper outlet and press the Power Button.
2. Press the gray recline pedal, on the back of the machine in between the wheels.
3. Press the Spray Trigger and make one slow forward wet pass and another back. Do not overwet.



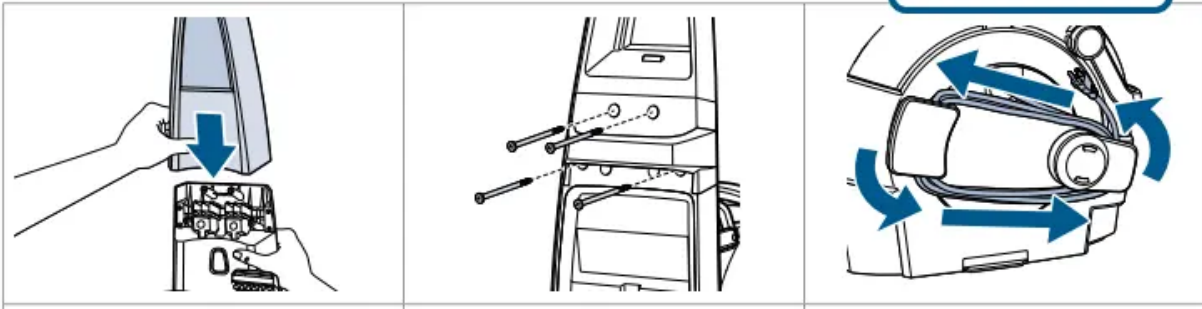
4. Release the Spray Trigger and make one slow forward and backward pass over the same area.
5. Repeat passes until solution being suctioned up appears clean. Continue passes without pressing the Spray Trigger until you can't see any more water being suctioned up. This helps speed up dry time.

Using the Portable Spot & Stain Cleaner

- Your portable spot & stain cleaner comes equipped with a hose and at

Tips

- When cleaning stairs, avoid tripping by placing the portable spot & stain cleaner on same step on which you are standing or seated.
- Work your way down the stairs, moving the portable spot & stain cleaner when required.
- Always be aware of where the machine is plugged into the outlet and avoid entanglement.



1. Step on the portable spot & stain cleaner Release Pedal to release the machine.
2. Release Flex Hose by twisting the hose secure latch clockwise. Unwrap hose completely.
3. Attach the desired cleaning tool to the hose grip until it snaps together.



4. Twist the Quick Release™ Cord Wrap clockwise to unwrap the cord completely and plug into grounded outlet.
5. Hold the tool approximately 1 inch above the soiled surface. Press the Spray Trigger to apply the cleaning solution. Do not overwet.
6. Release the Spray Trigger while applying downward pressure on the tool and pull it toward you. The suction will remove the dirt and cleaning solution. Continue until no more dirt can be removed.

Emptying the Dirty Water Tank



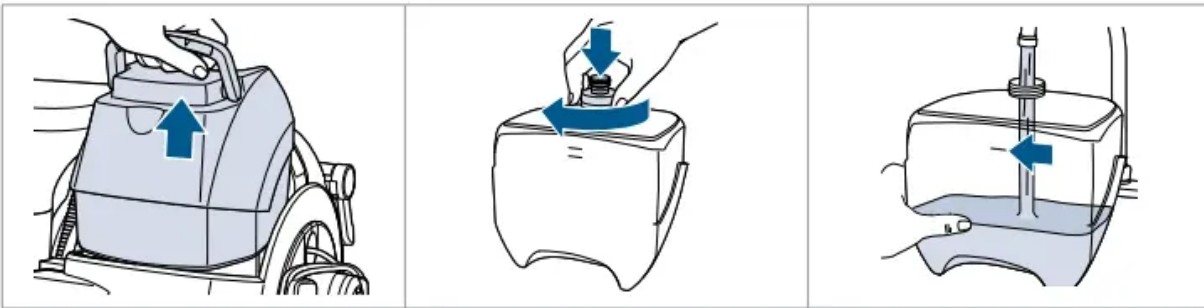
1. Remove tank and carry to a utility sink, toilet or outside (where you will dispose of the dirty water).

2. To unlock the tank's lid, rotate handle over the back of the tank.
3. Remove lid and pour out dirty water. Rinse tank to remove debris.

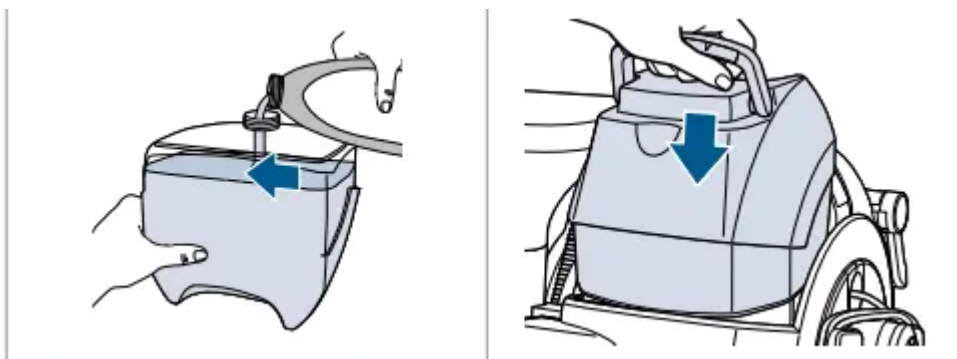


4. Wipe debris from the red filter located behind the Dirty Water Tank.
5. Replace top of tank and rotate the handle forward to lock in place.

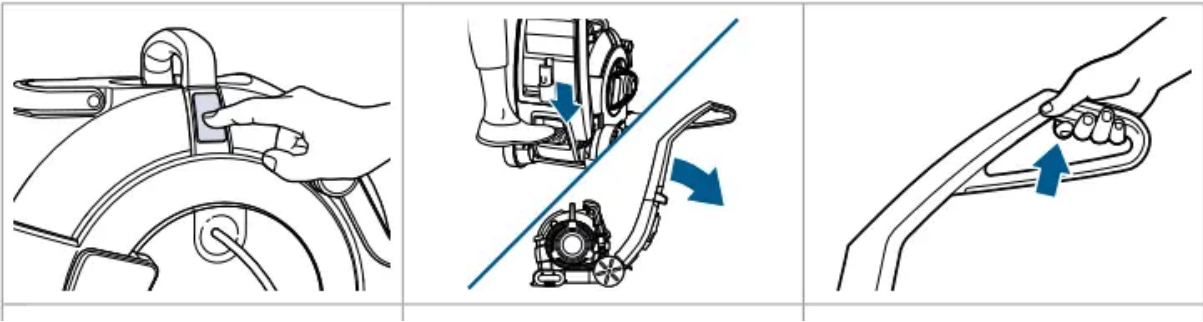
Cleaning the Machine



1. Turn the machine OFF and wrap up the Power Cord. Make sure the Dirty & Clean Water Tanks are emptied, rinsed and dried before the next use.
2. Remove portable spot & stain cleaner from the base of the machine.
3. Remove the nozzle assembly by unscrewing 3 screws and lifting away the upper and lower nozzle.

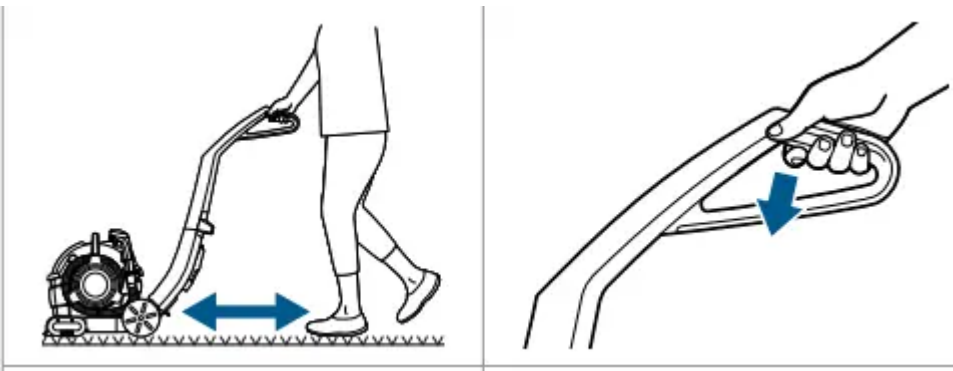


4. Rinse upper and lower nozzles under clean water.
5. Place lower nozzle back onto the machine by hooking the tabs into the holes on the bottom sides of the front of the machine.
6. Place upper nozzle onto the lower nozzle by hooking the tabs into the holes on the front of the lower nozzle. Secure with 3 screws.



7. Clean the spray tips. To remove black spray tip, unlatch tab on front of spray tip from base of machine and pull up and out of green receiver.
8. Rinse under water to clean.
9. Replace spray tip by inserting back into red receiver and latching tab into base of machine. Repeat steps for second spray tip.

Cleaning the Portable Spot & Stain Cleaner



1. Before turning OFF the machine, suction up clean water from a bowl to rinse out the hose. Then, lift the tool and point it upwards to drain remaining water into the tank.
2. Remove and rinse the tools in clean, running water. Dry and replace in the tool storage provided.
3. Wrap up the hose and secure it with the latch.

[IMAGE]

4. Check suction gate for debris. The suction gate automatically diverts air when the portable spot & stain cleaner is detached.
5. To clean suction gate, remove two screws and pull off suction gate door. 6. Wipe suction gate clean and rinse suction gate door. Once dry, replace suction gate door and two screws.

Troubleshooting

Upright Cleaning Mode Indicator Light does not illuminate

- The power is not turned ON.
- The portable spot & stain cleaner is not attached completely.
 - The power must be ON to activate the indicator light.
 - Make sure the portable spot & stain cleaner is attached. Push down firmly to check.

Reduced/no spray

- Clean Water Tank may be empty.
- Clean Water Tank may not be seated completely.
- Pump may have lost prime in portable spot cleaning mode.
- The portable spot & stain cleaner is not attached completely.
 - Refill tank.
 - Turn power OFF. Remove and reseal tank.
 - Hold end of hose below water level in tank to prime.
 - Push down firmly to check connection.

DirtLifter® PowerBrush does not turn

- The portable spot & stain cleaner is not attached completely
- The machine is in the upright position.
- Circuit breaker on machine (if equipped) may have tripped.
- The belt is off or broken
 - Make sure the portable spot & stain cleaner is attached. Push down firmly to check.
 - Brushes only rotate when machine is reclined using the recline pedal
 - Turn the machine OFF and unplug from outlet. Check to see if foreign object is caught in Brush Roll. Remove object. Plug machine in to reset circuit breaker.
 - Turn power OFF and unplug machine from outlet. Visit support.BISSELL.com for instructions on replacing the belt.

Loss of suction power

- Tanks may not be seated properly.
- Nozzles may not be assembled properly.
- The portable spot & stain cleaner is not attached completely.

- Dirty Water Tank has picked up maximum amount of dirty water and has reached full line.
- Clean Water Tank is empty
- Suction gate is open.
 - Pick up both tanks and reseal them so they fit snugly on the machine.
 - Unplug the machine. Check to make sure the “lip” of the nozzle is securely hooked into the groove on bottom of the machine (see page 9).
 - Make sure the portable spot & stain cleaner is attached. Push down firmly to check.
 - Empty Dirty Water Tank
 - Check fluid levels in tank.
 - Check to make sure the suction gate is closed. Follow instructions on page 10.

Warning

This content is compiled from multiple sources and is provided for reference purposes only. It may not be complete or fully applicable to all situations. If you are unable to resolve your issue, please contact the product manufacturer or an authorized service provider for official support.