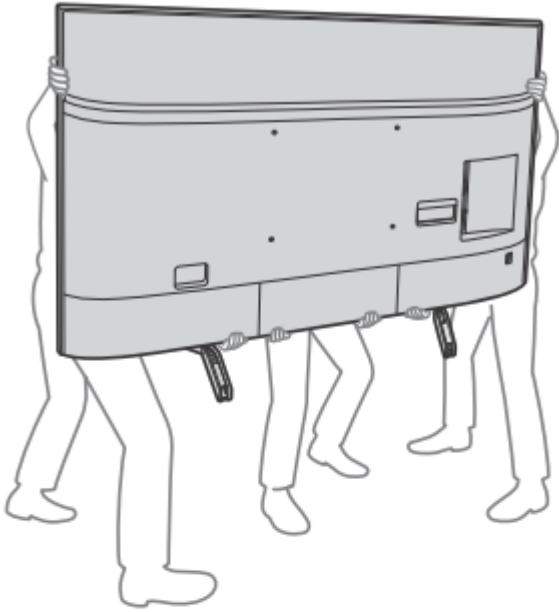


## Before setting up your TV

Some TV models are packaged with a detached Table-Top Stand so you can mount your TV to a wall right away. See “Installing the TV to the Wall” if you want to mount the TV to a wall. If you are not mounting the TV to a wall, you will need to attach the Table-Top Stand (refer to the Setup Guide).

Be sure to consider the following while setting up your TV:

- Disconnect all cables when carrying the TV.
- Two or more persons are needed to transport a large TV set.
- Correct hand placement while carrying the TV is very important for safety and to avoid damage.



- Ensure your TV has adequate ventilation, refer to the safety documentation.
- For best picture quality, do not expose the screen to direct illumination or sunlight.
- Avoid installing the TV in a room with reflective wall and floor materials.
- Avoid moving the TV from a cold area to a warm area. Sudden room temperature changes may cause moisture condensation. This may cause the TV to show poor picture and/or poor color. Should this occur, allow moisture to evaporate completely before powering the TV on.

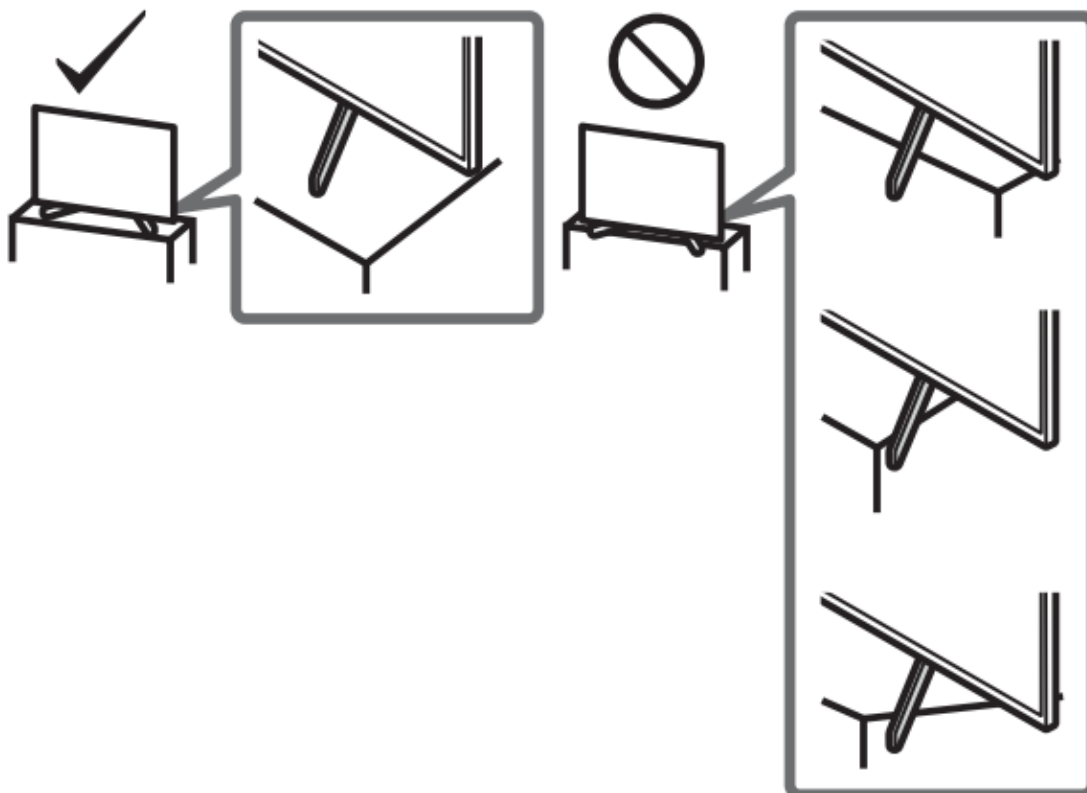
## Securing the TV

- Sony strongly recommends taking measures to prevent the TV from toppling over.

- Unsecured TVs may topple and result in property damage, serious bodily injury or even death.

## Preventing the TV from Toppling

- Secure the TV to a wall and/or Stand.
- Do not allow children to play or climb on furniture and TV sets.
- Avoid placing or hanging items on the TV.
- Never install the TV on:
  - slippery, unstable and/or uneven surfaces.
  - furniture that can easily be used as steps, such as a chest of drawers.
- Install the TV where it cannot be pulled, pushed, or knocked over.
- Install the TV so that the TV's Table-Top Stand does not protrude out from the Stand (not supplied). If the Table-Top Stand protrudes out from the Stand, it may cause TV set to topple over, fall down, and cause personal injury or damage to the TV.



- Route all AC power cords and connecting cables so that they are not accessible to curious children.

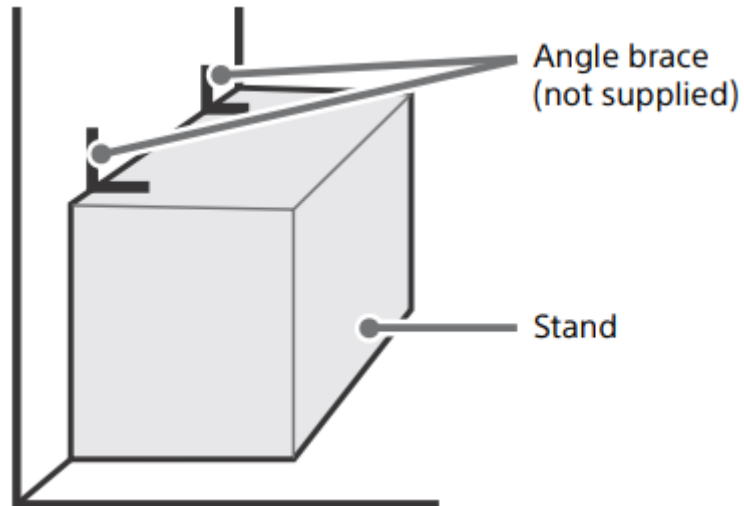
## Recommended Measures to Secure the TV

Consider the following measures when securing your TV to a Stand (not supplied).

1. Secure the Stand for the TV.

Make sure the Stand can adequately support the weight of the TV. Use two angle braces (not supplied) to secure the Stand. For each angle brace use the appropriate hardware to:

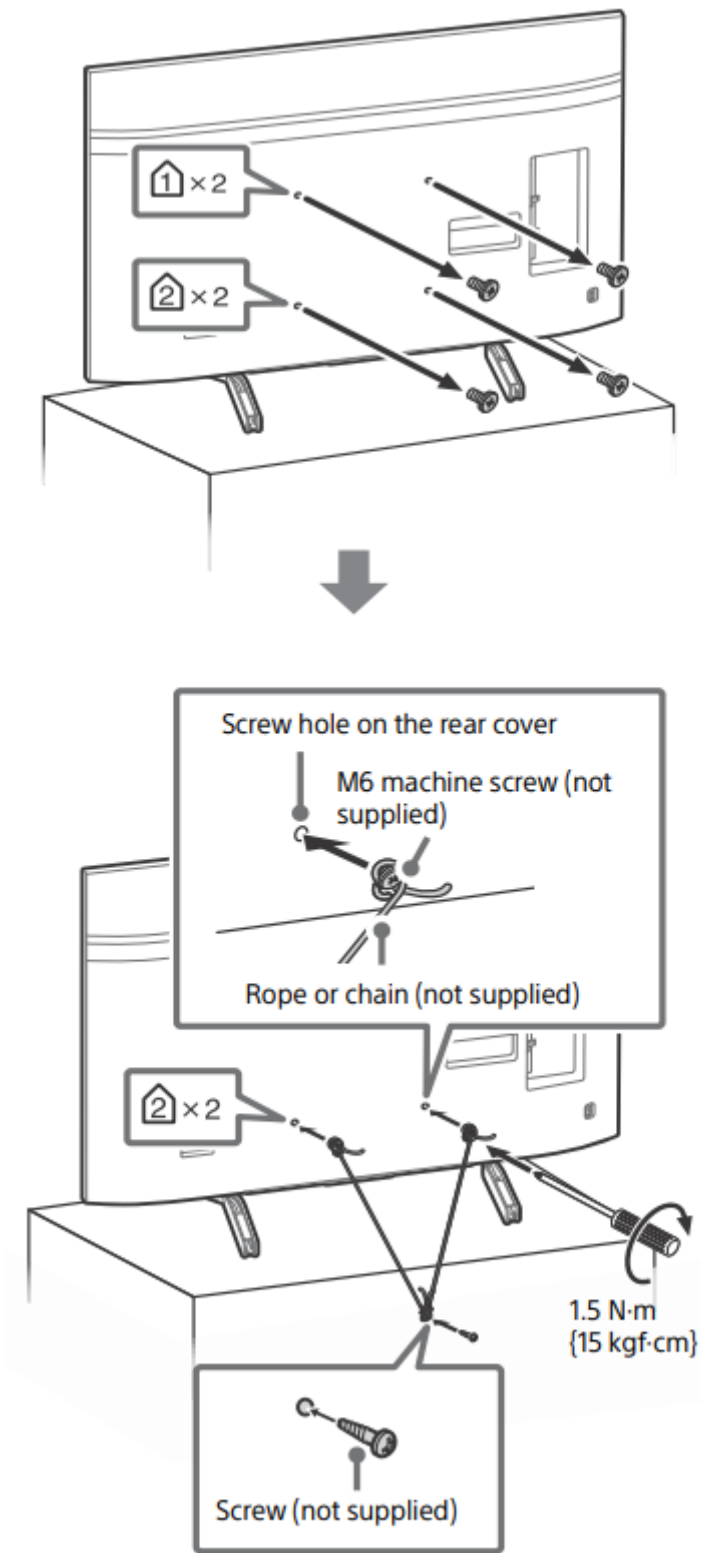
- Attach one side of the angle brace to the wall stud.
- Attach the other side to the Stand.



2. Secure the TV to the Stand.

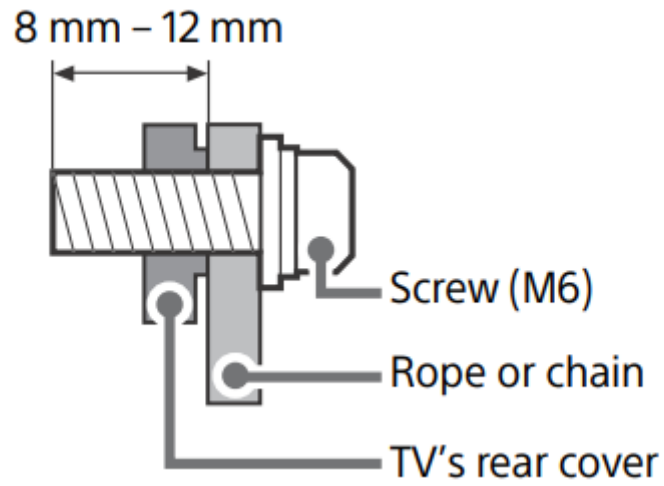
Use the optional hardware listed as follows (not supplied):

- M6 machine screws (screwed into the TV's rear cover).
- A screw or similar (attach it to the Stand).
- Rope or chain (strong enough to support the weight of the TV). Make sure that there is no excess slack in the rope or chain

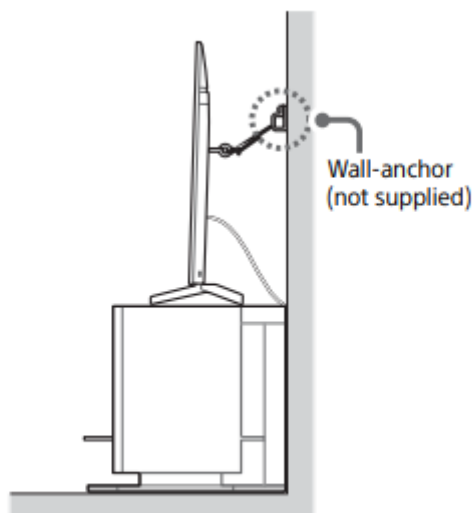
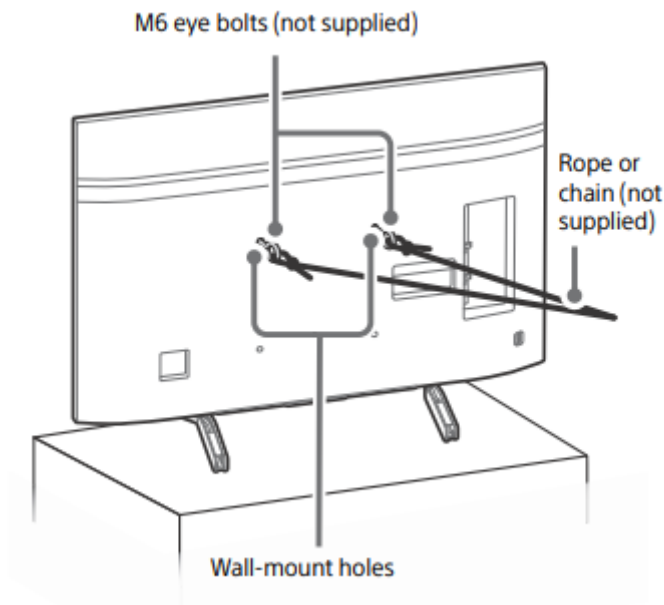


The length of the M6 machine screw differs depending on the rope or chain diameter. Please refer to below illustration.





3. Anchor the TV to the wall by using bolts, wall anchor and chain (or rope)

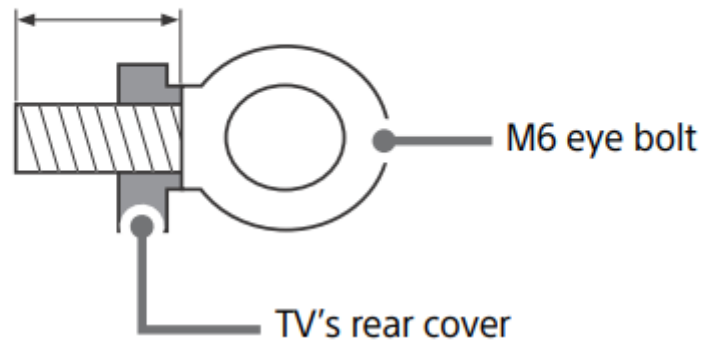


Please refer to below illustration for M6 eye bolt length.



## XBR-85X850G

8 mm – 12 mm



### Note

- Your TV is shipped with screws attached to the rear of the TV depending on the TV model. (They are fastened in the screw holes for wall mounting.) Be sure to remove the upper two screws prior to anchoring the TV to a wall.
- Securing the TV to the Stand without securing the TV and the Stand to the wall provides minimum protection against the TV toppling over. For further protection, be sure to follow the three measures recommended

## Precautions

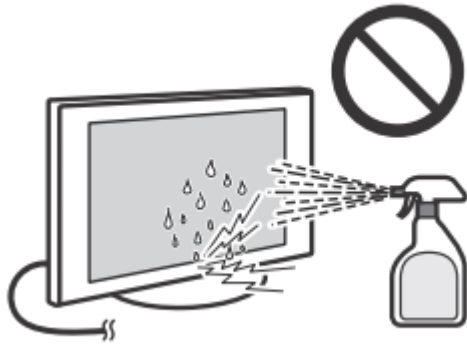
### How to care for your BRAVIA TV

Safety is very important. Please read and follow the safety documentation (Safety Booklet) separately provided.

Unplug the TV and other connected equipment from the wall outlet before you begin cleaning your TV.



- Wipe the LCD screen gently with a soft cloth.
- Stubborn stains may be removed with a cloth slightly moistened with a solution of mild soap and warm water.

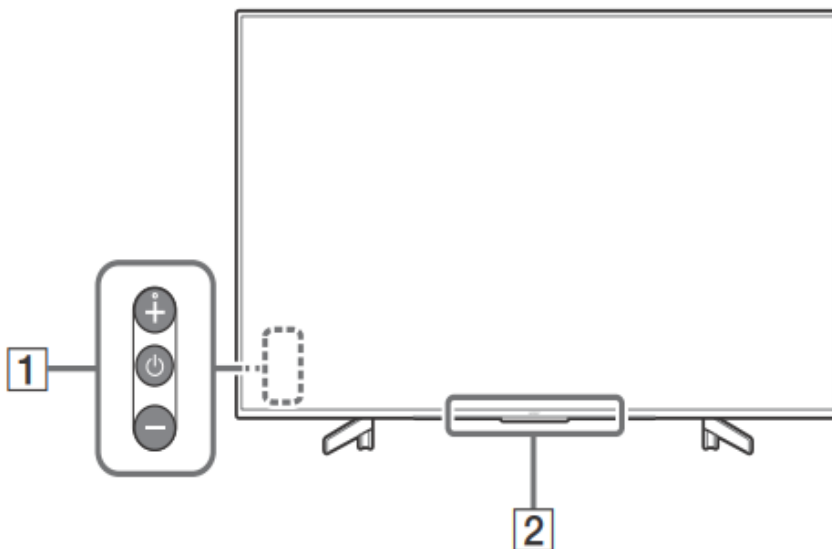


- If using a chemically pretreated cloth, please follow the instruction provided on the package.
- Never spray water or detergent directly on the TV set. It may drip to the bottom of the screen or exterior parts and enter the TV set, and may cause damage to the TV set.
- Never use strong solvents such as a thinner, alcohol or benzene for cleaning.
- Do not plug in the TV into the wall outlet until the moisture from cleaning has evaporated.


The TV should also be placed on a stable surface to prevent it from toppling over (see page 4). If you have young children or pets at home, check regularly to ensure the TV is securely fastened.


## Parts and Controls


### Controls and Indicators



#### 1. (Power) /+/-

When the TV is off, Press  to power on.

**When the TV is on,** Press and hold  to power off.

Press  repeatedly to change the function, then press + or – button to:

- Adjust the volume.
- Select the channel.
- Select the input source of TV.

## **2. Remote Control sensor\* / Light sensor\* / Illumination LED**

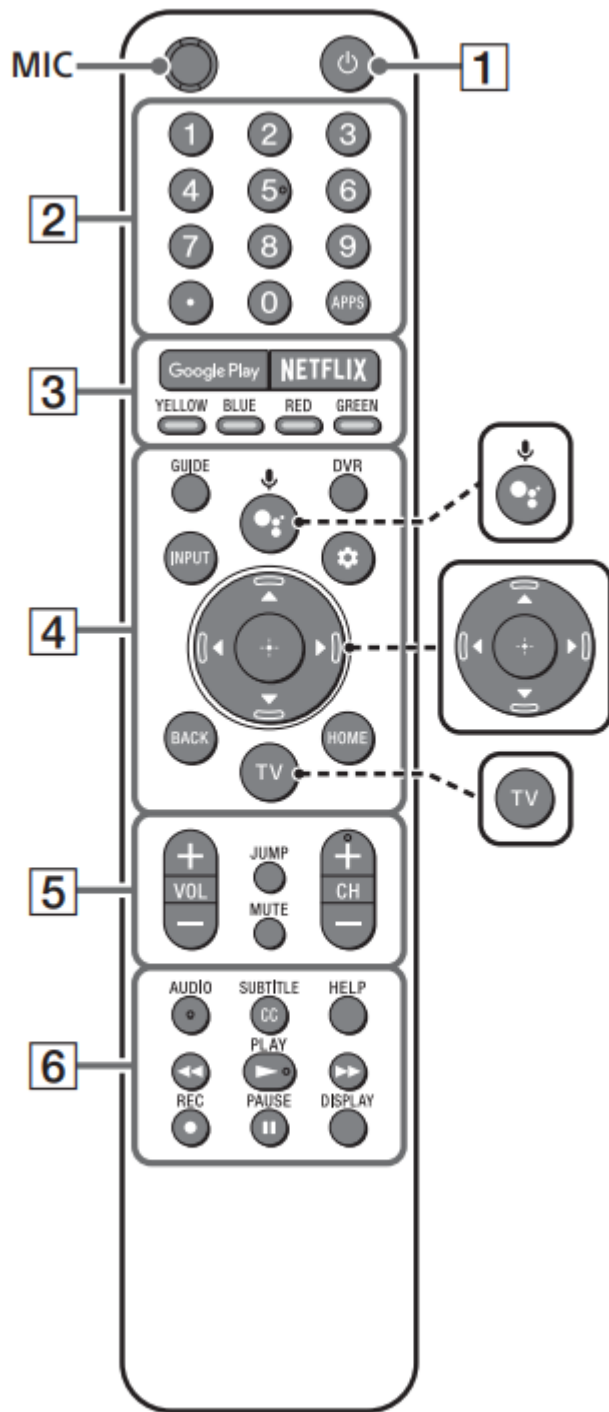
The illumination LED lights up or blinks according to the status of the TV. For more information, refer to the Help Guide.

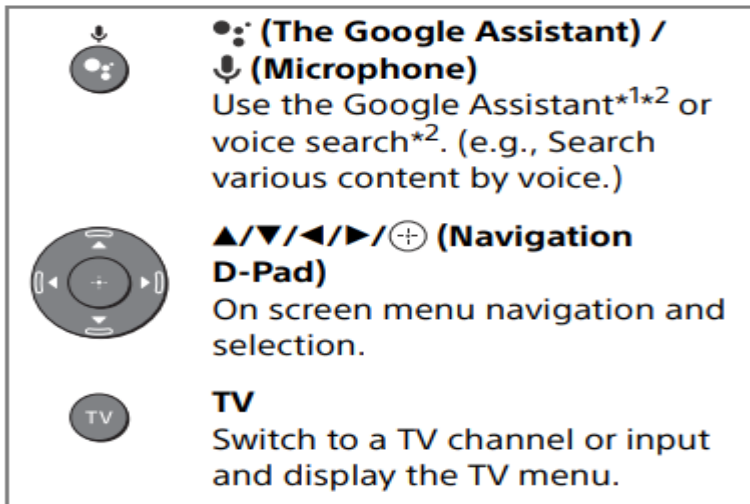
\* Do not place anything near the sensor.

# **Using Remote Control**

## **Remote Control Parts Description**

The remote control shape, layout, availability and function of remote control buttons may vary depending on your region/country/TV model/TV settings.





\*1 Only on limited region/country/language.

\*2 The Google Assistant or voice search requires an Internet connection.

1.  **(TV standby)**

Turn on or turn off the TV (standby mode).

2. **Number buttons**



Use with the 0-9 buttons to select digital channels.

**APPS** Display a list of installed apps.

3. **Google Play**

Access the “Google Play” online service.

**NETFLIX (Only on limited region/ country/TV model)**

Access the “NETFLIX” online service.

**Color buttons**

Execute corresponding function at that time.

4. **GUIDE**

Display the digital program guide, or EPG of cable/satellite box after setting [Cable/Satellite box setup].

**DVR**

Display the DVR’s list of recorded programs after setting [Cable/Satellite box setup].

**INPUT**

Display and select the input source, etc.



**(Quick settings)**

Display Quick Settings.

**BACK**

Return to the previous screen.

**HOME**

Display the TV Home Menu.

## 5. VOL +/- (Volume)

Adjust the volume.

### **JUMP**

Jump back and forth between two channels or inputs. The TV alternates between the current channel or input and the last channel or input that was selected.

### **MUTE**

Mute the sound. Press again to restore the sound.

### **Hint**

- The accessibility shortcut service can be turned on or off by pressing and holding **MUTE**.

### **CH +/- (Channel)**

Select the channel.

## 6. AUDIO

Select the sound of multilingual source or dual sound for the program currently being viewed (depend on program source).

### **SUBTITLE/CC**

Turn subtitles on or off (when the feature is available).

### **HELP**

Display the Help menu. Help Guide can be accessed from here.



Operate media contents on the TV and connected BRAVIA Sync-compatible device.



Record the current program with the DVR after setting [Cable/Satellite box setup].

### **DISPLAY**

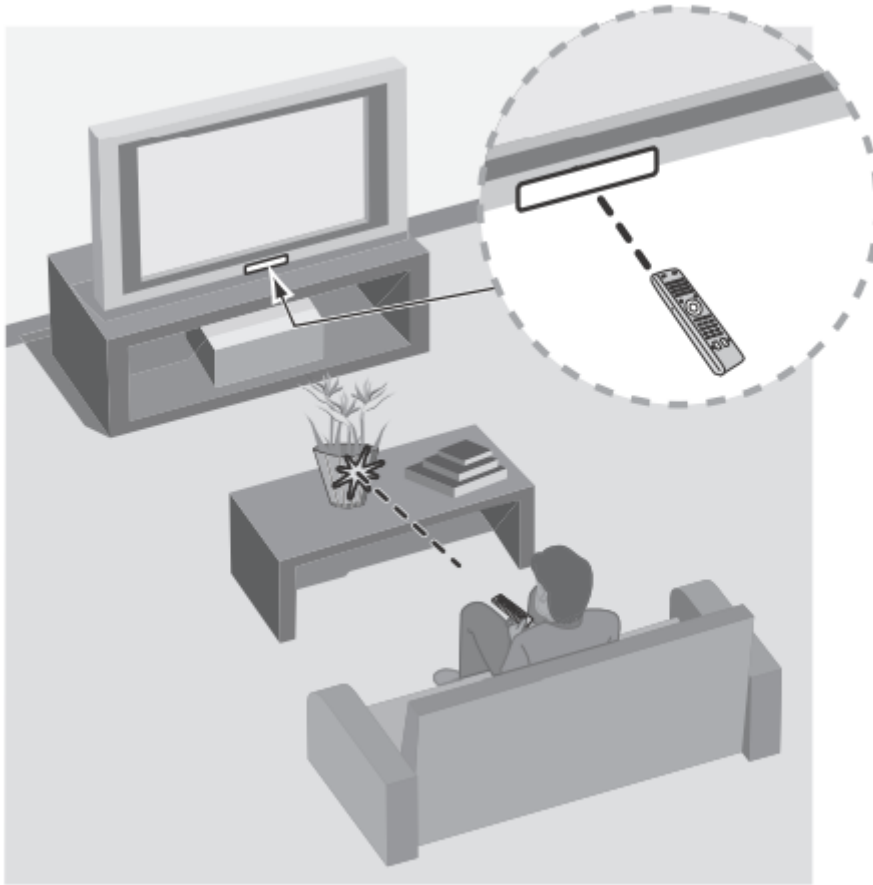
Display information about the channel/ program/input you are viewing.

### **Note**

- For more information about [Cable/Satellite box setup], refer to the Help Guide.

## **Guidelines for IR Remote Control**

- Point your remote control directly at the IR sensor located on your TV.
- Make sure that no objects are blocking the path between the remote control and the IR sensor on your TV.



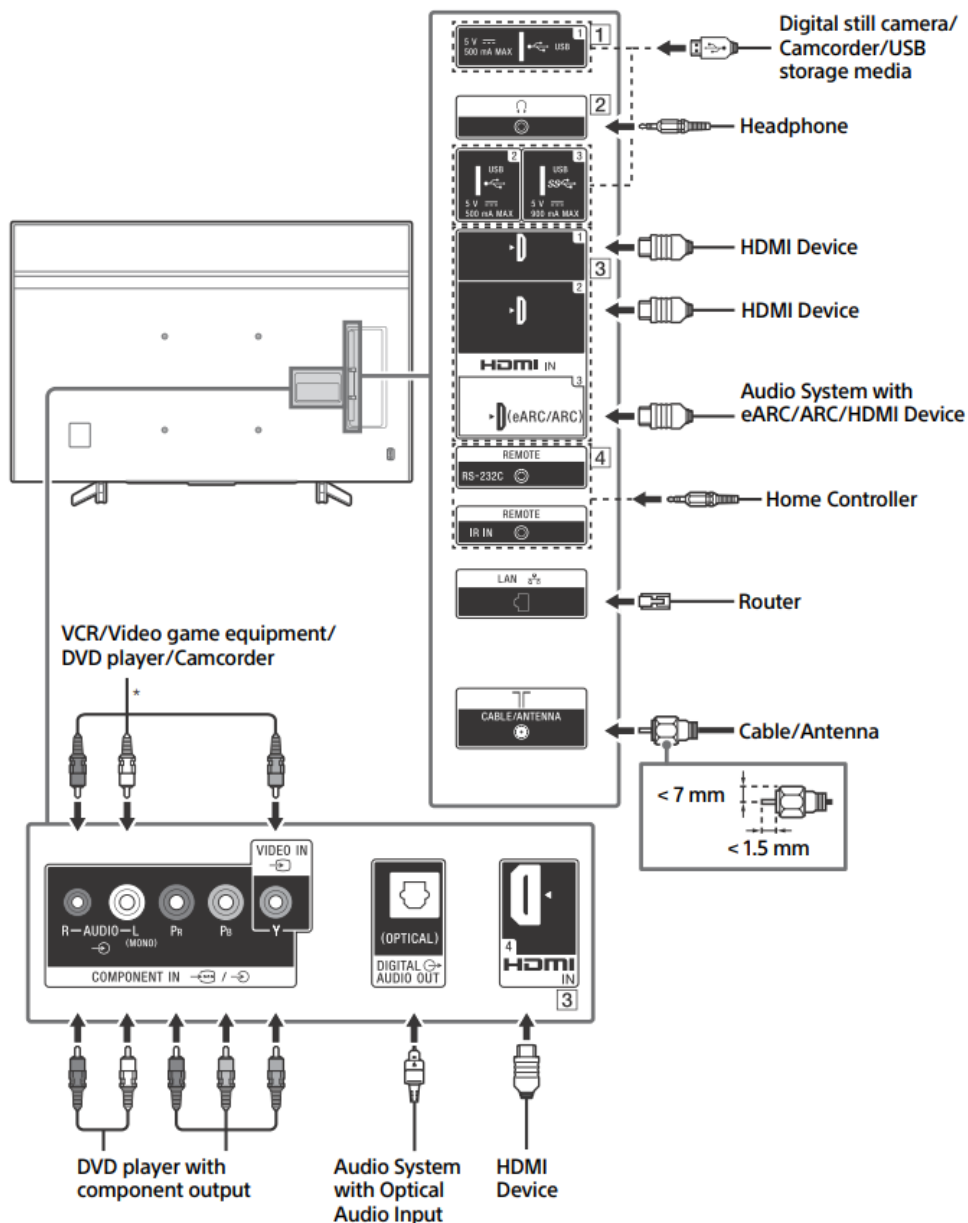
- Fluorescent lamps can interfere with your remote control; try turning off the fluorescent lamps.
- If you are having problems with the remote control, reinsert or replace your batteries and make sure that they are correctly inserted.

### Connection Diagram

For more information on connections, refer to the Help Guide by pressing HELP on the remote control.

#### Note

- When connecting the cable to the Cable/Antenna input, finger tighten only, over tightening the connection can damage the TV.



### 1 **USB 1/2, USB 3**

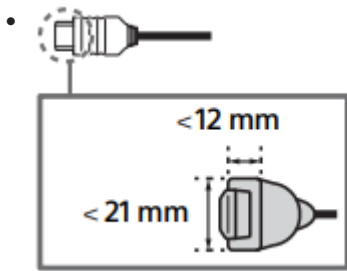
- Connecting a large USB device may interfere with other connected devices beside it.
- When connecting a large USB device, connect to the USB 1 port.

### 2 **(Headphone)**

- Supports 3-pole stereo mini jack only.
- You cannot output sound from both the headphone and the TV speakers at the same time.

### 3 **HDMI IN 1/2/3/4**

- HDMI interface can transfer the digital video and audio on a single cable.



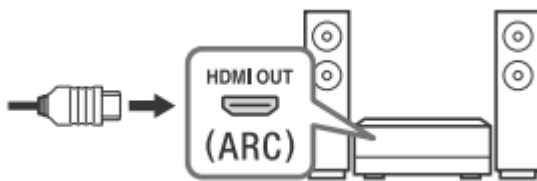
- To enjoy high quality 4K 60p contents, connect a Premium High Speed HDMI cable and set the [HDMI signal format] to [Enhanced format]. Do this setting individually for each connected HDMI IN terminal. For details of supported formats, refer to the “Specifications” in this manual (page 17-18).

- **HDMI IN 3 eARC/ARC (Enhanced Audio Return Channel/Audio Return Channel)**

Connect your audio system to the HDMI IN 3 to route TV audio to your audio system. An audio system that supports HDMI eARC/ARC can send video to the TV, and receive audio from the TV via the same HDMI cable.

If your audio system does not support HDMI eARC/ARC, an additional connection with DIGITAL AUDIO OUT (OPTICAL) is necessary.

- Use the HDMI cable with Ethernet to connect audio system with eARC.



#### **4 REMOTE RS-232C REMOTE IR IN**

- These jacks are for receiving the external control signal. Enables extended control of the TV using RS-232C via the RS-232C and IR IN jacks.

RS-232C: connect to the RS-232C terminal of the home controller.

IR IN: connect to the IR out terminal of the home controller.

- Take care to not connect to headphones or an external audio system.

\* When connecting mono equipment, connect to the L (MONO) audio jack (socket).

## **Installing the TV to the Wall**

**Using the optional Wall-Mount Bracket (SU-WL855 only)\* (not supplied)**

**To Customers:** For product protection and safety reasons, Sony strongly recommends that installation of your TV be performed by Sony dealers or licensed contractors. Do not attempt to install it yourself.

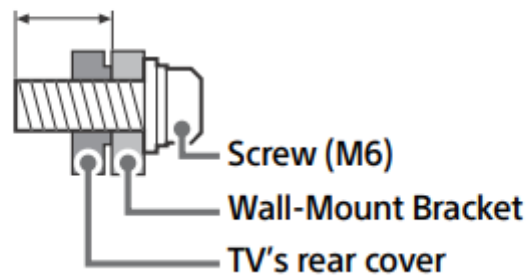
**To Sony Dealers and Contractors:** Provide full attention to safety during the installation, periodic maintenance and examination of this product.

**Wall-Mount Bracket Installation Information:** For instructions on Wall-Mount Bracket installation, see the Installation Information (Wall-Mount Bracket) on the Sony Customer Support website for your TV model at the following address.

- Follow the instruction guide provided with the Wall-Mount Bracket for your model. Sufficient expertise is required in installing this TV, especially to determine the strength of the wall for withstanding the TV's weight.
- Sony is not liable for any damage or injury caused by mishandling or improper installation.
- The length of the screw for Wall-Mount Bracket differs depending on the Wall-Mount Bracket thickness. Please refer to below illustration.

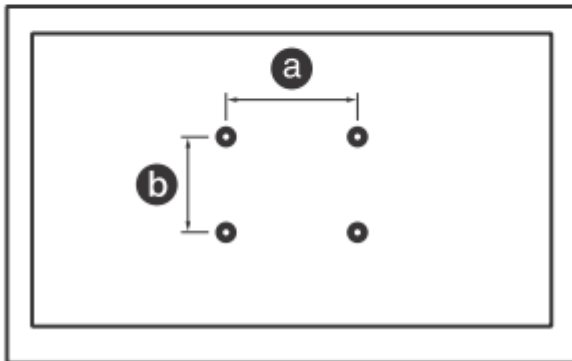
### **XBR-85X850G**

**8 mm – 12 mm**



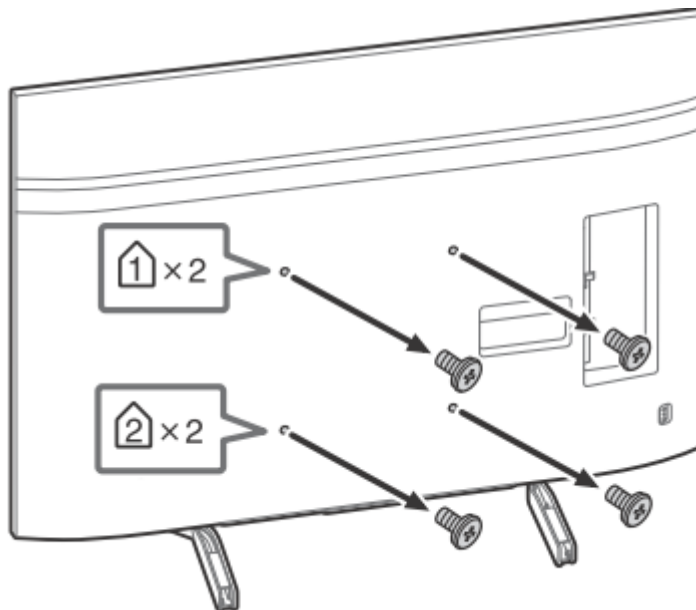
- Refer to the following table for wall-mount hole pattern.

Model Name	Wall-mount hole pattern
	a × b
XBR-85X850G	400 × 400 mm
XBR-75X850G	400 × 300 mm
XBR-65X850G	300 × 300 mm
XBR-55X850G	300 × 200 mm

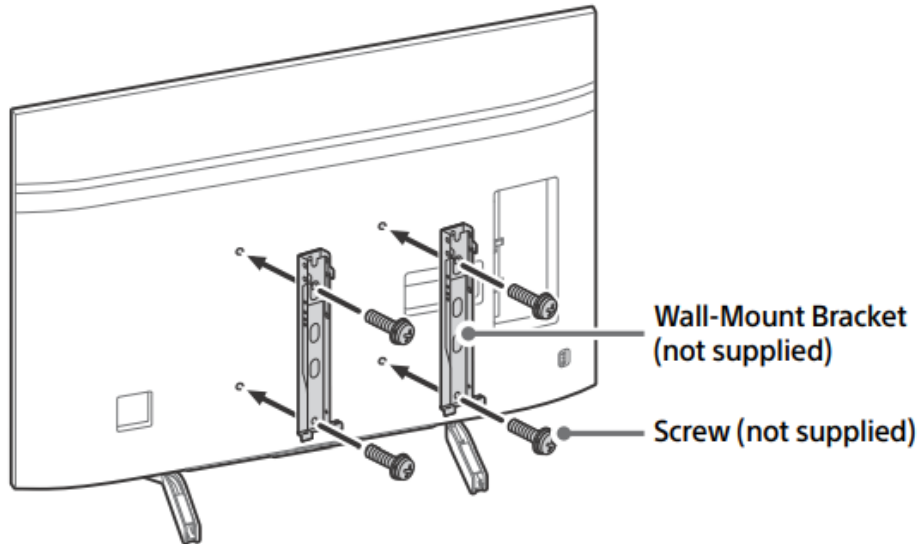


- Be sure to store the unused screws and Table-Top Stand in a safe place until you are ready to attach the Table-Top Stand. Keep the screws away from small children.

1. Remove the screws from the rear of the TV.



**2. Attach the Wall-Mount Bracket (not supplied) using the screws (not supplied)**



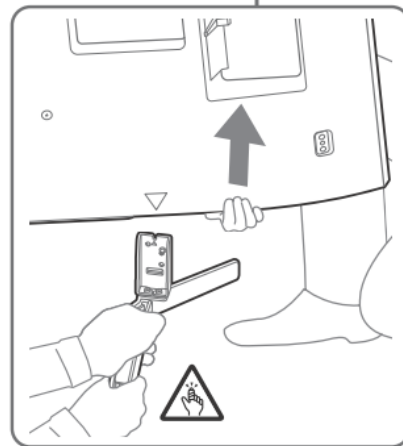
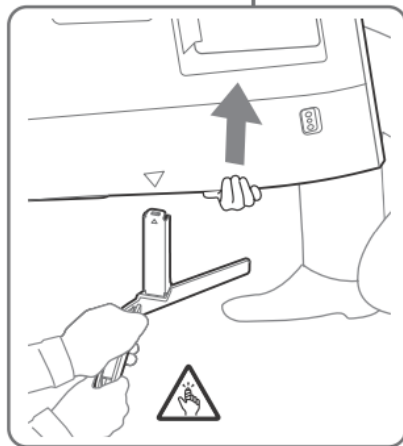
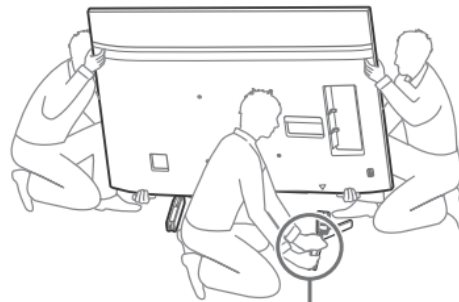
**Detaching the Table-Top Stand from the TV**

**1. Remove one side of the Table-Top Stand at a time. Firmly hold the Table-Top Stand securely with both hands while the other people lift up the TV.**

**XBR-85X850G**



**XBR-75/65/55X850G**



**2. Repeat the previous step and remove the other side of the Table-Top Stand.**

**Note**

- Three or more people are required to detach the Table-Top Stand.



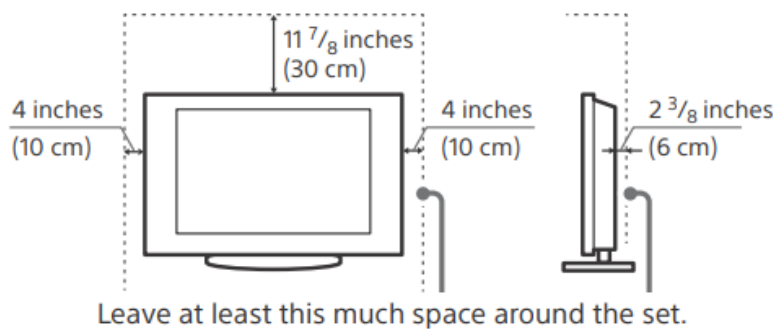
- Be careful when lifting the TV as the Table-Top Stand is detached, the Table-Top Stand may topple over and cause personal injury.
- Take care when removing the Table-Top Stand from the TV to prevent it from falling over and damaging the surface that the TV is sitting on
- Do not remove the Table-Top Stand for any reason other than to install corresponding accessories on the TV.
- Be sure the TV is vertical before turning on. To avoid uneven picture uniformity do not power on the TV with the LCD panel facing down.

## Installing the TV against a wall or enclosed area

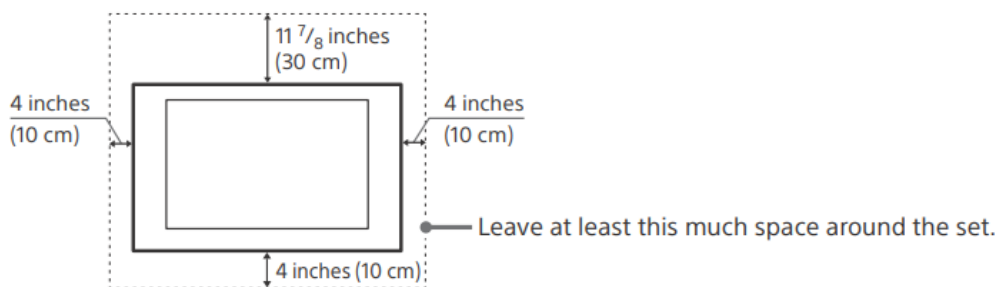
### Ventilation

- Never cover the ventilation holes or insert anything into the cabinet.
- Leave space around the TV set as shown below.

### Installed with stand

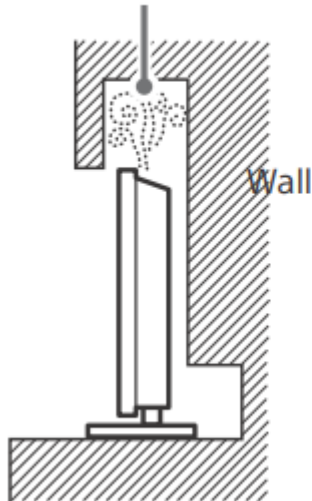


### Installed on the wall

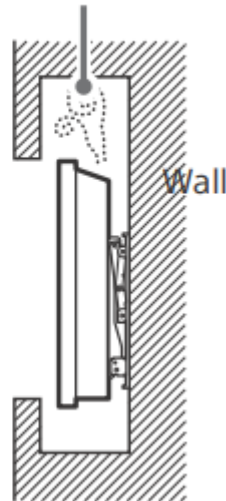


**Never install the TV set as follows:**

Air circulation is blocked.



Air circulation is blocked.



#### Note

- Inadequate ventilation can lead to overheating of the TV and may cause damage to your TV or cause a fire.

## Troubleshooting

General troubleshooting for issues like: black screen, no sound, frozen picture, TV does not respond, or network is lost, do the following steps.

1. Restart your TV by pressing the power button on the remote control for about five seconds. The TV will restart. If the TV does not recover, try unplugging the AC power cord then press the power button on the TV and release it. Wait for two minutes, and plug in the AC power cord. Or, press the power button on the TV for about 40 seconds until the TV turns off.
2. Refer to the **Help** menu shown below.
3. Connect your TV to the Internet and perform a software update. Sony recommends you to keep your TV software updated. Software updates provide new features and performance improvements.
4. Visit Sony support website (information provided at the end of this manual).
5. Perform the factory data reset.

**When you plug in the TV, the TV may not be able to turn on for a while even if you press the power button on the remote control or the TV.**

It takes time to initialize the system. Wait for about one minute, then operate it again.

**How to reset the TV to factory settings:**

**WARNING:** The reset will clear all of your customized settings including the parental lock setting.

- You can reset the TV to factory settings by selecting [Factory data reset]. How to select [Factory data reset], refer to the online Help Guide.
- To force factory data reset, unplug the AC power cord. Press and hold button on the TV, then plug in the AC power cord.
- For security purposes, be sure to remove all personal and account information before discarding, selling or passing your TV to someone else by: unlinking/ unregistering, signing out of and deactivating all network services as well as factory reset the TV

## **Troubles and Solutions**

### **When the illumination LED is flashing in red.**

- Count how many times it flashes (interval time is three seconds).

Reboot the TV by disconnecting the AC power cord from the TV until the illumination LED stopped flashing in red, then turn on the TV.

If the problem persists, disconnect the AC power cord, and contact Sony Customer Support (information provided on the front cover of this manual) with the number of times the illumination LED flashes.

### **There is no picture (screen is dark) and no sound.**

- Check the cable/antenna connection.
- Connect the TV to the AC power, and press the power button on the TV or the remote control.

### **Some programs cannot be tuned.**

- Check the cable/antenna connection.

### **The remote control does not function.**

- Replace the batteries.

### **The parental lock password has been forgotten.**

- Enter 4357 for the PIN and enter the new PIN.

### **The restricted profile password has been forgotten.**

- Perform the force factory data reset. Refer to “How to reset the TV to factory settings”(page 16).

### **The TV and its surroundings become warm.**

- When the TV is used for an extended period of time, the TV and its surroundings may become warm to the touch. This is not a malfunction of the TV.

**Warning**

This content is compiled from multiple sources and is provided for reference purposes only. It may not be complete or fully applicable to all situations. If you are unable to resolve your issue, please contact the product manufacturer or an authorized service provider for official support.

---

Document generated by [ManualsFile](#)