

SAFETY INSTRUCTIONS

THE APPLIANCE AND THE REMOTE CONTROL BOTH CONTAIN MAGNETS.

1. Pacemakers and defibrillators may be affected by strong magnetic fields. If you or someone in your household has a pacemaker or defibrillator, avoid placing the remote control in a pocket or near to the device.
2. Credit cards and electronic storage media may also be affected by magnets and should be kept away from the remote control and the top of the appliance

TO REDUCE THE RISK OF FIRE, ELECTRIC SHOCK, OR INJURY:

- When used in heating mode the appliance is hot when in use and for a short period after use.
- To avoid burns, do not let bare skin touch hot surfaces. When moving the appliance hold it by the base, not the air loop amplifier.
- Keep combustible materials, such as furniture, pillows, bedding, papers, clothes and curtains, at least 0.9m (3 feet) from the front of the appliance and keep them away from the sides and rear when the appliance is plugged in.
- Use only as described in this Dyson Operating Manual. Do not carry out any maintenance other than that shown in this manual, or advised by the Dyson Helpline. Any other use not recommended by the manufacturer may cause fire, electric shock, or injury to persons.
- Ensure appliance is fully assembled in line with the instructions before use. Do not dismantle the appliance or use without the loop amplifier fitted.
- Do not allow to be used as a toy. Close attention is necessary when used by or near children.
- Children of less than 3 years should be kept away unless continuously supervised. Children should be supervised to ensure that they do not play with the appliance and remote control.
- Children aged from 3 years and less than 8 years shall only switch on/off the appliance provided that it has been placed or installed in its intended normal operating position and they have been given supervision or instruction concerning use of the appliance in a safe way and understand the hazards involved. Children aged from 3 years and less than 8 years shall not plug in, regulate and clean the appliance or perform user maintenance. CAUTION – Some parts of this product can become very hot and cause burns. Particular attention has to be given where children and vulnerable people are present.

- This Dyson appliance is not intended for use by persons (including children) with reduced physical, sensory or reasoning capabilities, or lack of experience and knowledge, unless they have been given supervision or instruction concerning use of the appliance by a person responsible for their safety.
- Suitable for dry locations ONLY. Do not use outdoors or on wet surfaces. Do not use in bathrooms, laundry areas and similar indoor locations. Never locate the appliance where it may fall into a bath or other water container. Do not use or store where it may get wet or in the immediate surroundings of a bath, a shower, or a swimming pool.
- This appliance has hot parts inside. Do not use it in areas where petrol, paint, or flammable liquids are used or stored or where their vapours are present. Do not use in conjunction with or directly next to an air freshener or similar products.
- Do not locate directly below a mains electricity supply socket.
- Always plug directly into a wall socket. Never use with an extension cable as overloading may result in the cable overheating and catching fire.
- Do not handle any part of the plug or appliance with wet hands.
- Do not use with a damaged cord or plug. If the supply cord is damaged it must be replaced by
- Dyson, its service agent or similarly qualified persons in order to avoid a hazard
- Do not unplug by pulling on the cable. To unplug, grasp the plug, not the cable.
- Do not stretch the cord or place the cord under strain. Keep cord away from heated surfaces.
- Do not run cord under carpeting. Do not cover cord with throw rugs, runners or similar coverings.
- Arrange cord away from traffic area and where it will not be tripped over.
- To prevent a possible fire, do not use with any opening or exhaust blocked, and keep free of dust, lint, hair, and anything that may reduce airflow. Do not put any object into the inlet grill or the exhaust opening as this may cause an electric shock or fire, or damage the appliance.
- Do not use on soft surfaces, such as a bed, where openings may become blocked.
- In order to avoid overheating, do not cover the heater.
- For the best performance, place on the floor, in the corner of the room, at least 1m from any wall and facing into the centre of the room.
- Turn off all controls before unplugging. Unplug before connecting any tool or accessory.
- Do not use any cleaning agents or lubricants on this appliance. Unplug before cleaning or carrying out any maintenance.

- If there is a loose fit between the plug and the socket or the plug becomes very hot, the socket may need to be replaced. Check with a qualified electrician to replace the socket.
- **WARNING: Chemical Burn and Choking Hazard.** Keep batteries away from children. This product contains a lithium button/coin cell battery in the remote control unit. If a new or used lithium button/coin cell battery is swallowed or enters the body, it can cause severe internal burns and can lead to death in as little as 2 hours. Always completely secure the battery compartment. If the battery compartment does not close securely, stop using the product, remove the batteries, and keep it away from children. If you think batteries might have been swallowed or placed inside any part of the body, seek immediate medical attention.
- If the appliance is not working as it should, has received a sharp blow, has been dropped, damaged, left outdoors, or dropped into water, do not use and contact the Dyson Helpline.
- Contact the Dyson Helpline when service or repair is required. Do not disassemble the appliance as incorrect reassembly may result in an electric shock or fire.
- Always carry the appliance by the base, do not carry it by the loop amplifier.
- To avoid a tripping hazard wind the cord when not in use.
- Do not use near furnaces, fireplaces, stoves or other high temperature heat sources.
- Do not use in conjunction with or directly next to an air freshener or similar products. Do not spray or apply perfumes directly on or near the filter. Keep essential oils and chemicals away from the appliance.
- The appliance should not be forcefully turned or oscillated, under any circumstances. This will cause damage to the oscillation mechanism.
- When removing or replacing the filter, take care to keep your fingers clear

Setting up

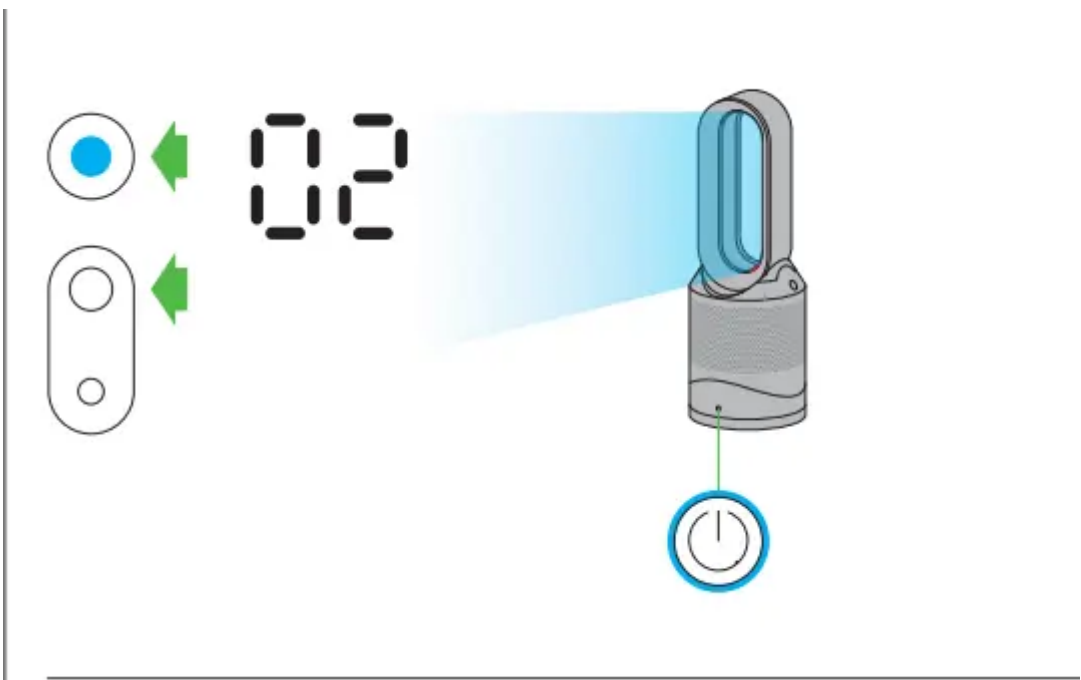
Dyson Link app

- The appliance can be enhanced when connected to the Dyson Link app on your smart device.
- Select 'Add a Product' from within the app and follow the on screen instructions.
- Download the Dyson Link app, available on iOS and Android.
- In order to connect the appliance, you will need the information on the front of this manual.\

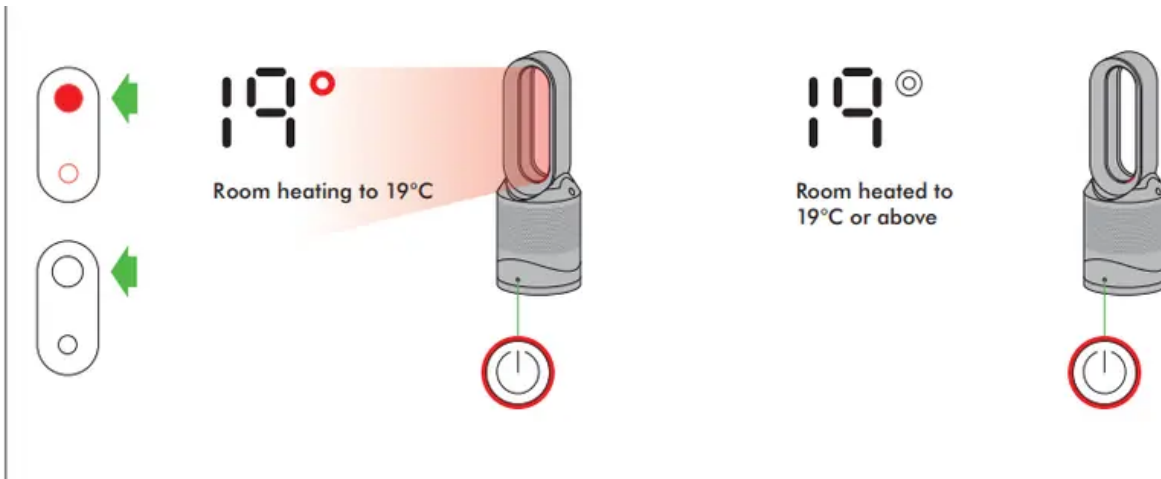


-  **Flashing green** = Wi-Fi is ready to connect to your Dyson Link app
-  **Flashing white** = Wi-Fi connecting
-  **Solid white** = Wi-Fi connected
- Off** = Wi-Fi disabled
- A** **Solid white** = cleaning/ air quality target has not been met
- A** **Solid green** = clean/air quality target has been met
- Off** = appliance is not in auto cleaning mode
-  **Solid red** = appliance is heating
-  **Solid white** = appliance has reached target temperature
-  **Solid white** = appliance is in night mode
- Off** = appliance is not in night mode

Display icons



Remote control



Remote control docks magnetically. Attach the remote control to the top of the appliance with the buttons facing down. To operate, point the remote control toward the front of the base.

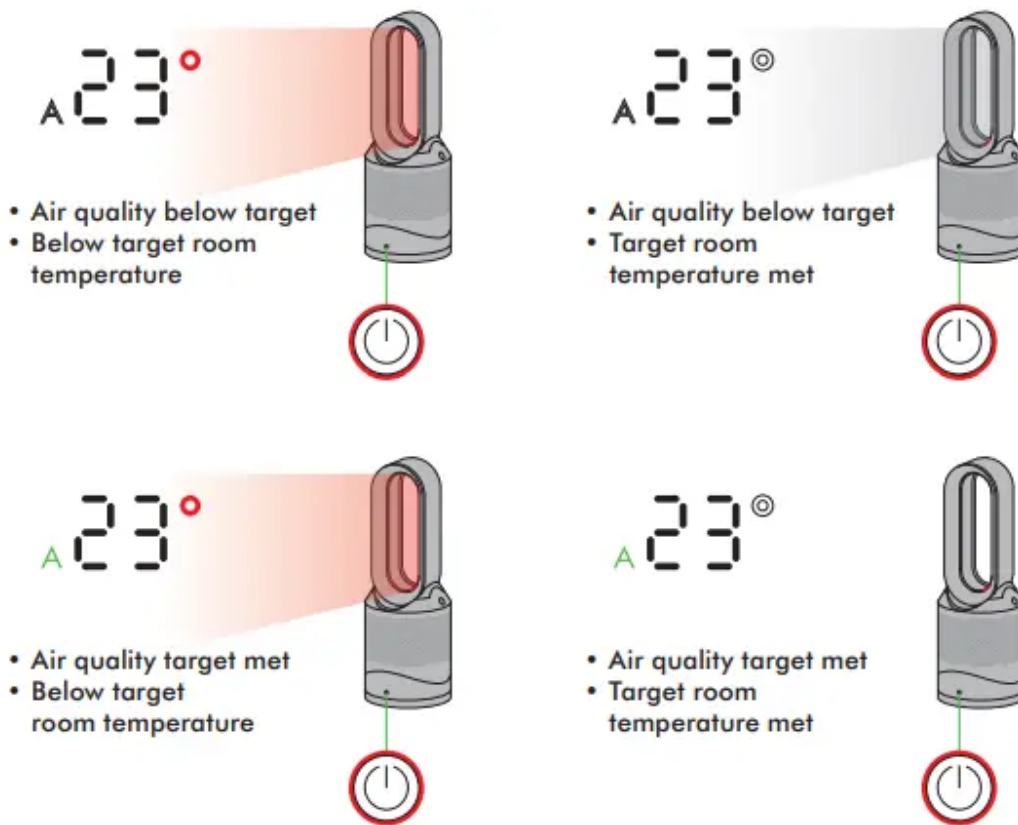
Heating and cooling modes

Appliance is in cooling mode

1. Press the blue cooling mode button to enter cooling mode. The power button light will change from red to blue to indicate that you have entered cooling mode. To adjust the airflow speed use the airflow control button or use auto mode for automatic control.
2. On first use, the appliance will default to a temperature 3°C higher than the detected room temperature. Thereafter, the appliance will remember the last target temperature set.



Appliance is in heating mode

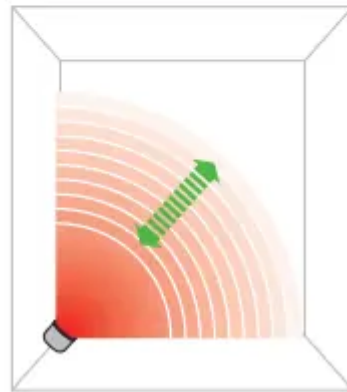
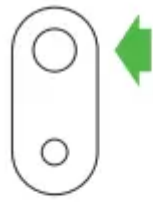


- Each time the heating mode is selected, it conducts a short calibration cycle. Airflow will be automatically controlled during this cycle. Once the calibration cycle is complete, it will revert to the selected airflow speed.

Auto mode

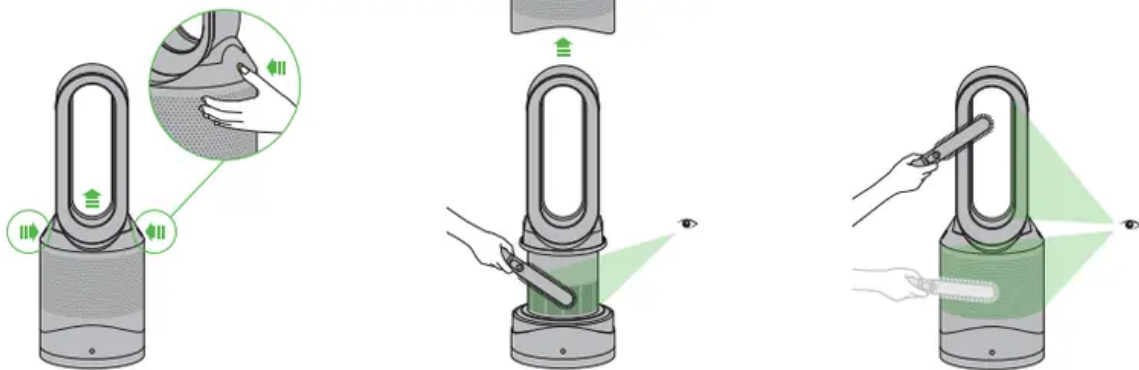
1. When auto mode is enabled (indicated by an A symbol in the bottom left corner of the display), the on-board sensors will intelligently adjust the speed of the appliance according to the air quality
2. Auto mode behaviour differs slightly between cooling and heating modes.

Appliance is in auto cooling mode



- If the air is clean the A symbol will turn green and the numerical display will switch off. If the air quality worsens the A symbol will turn white and the appliance will automatically restart cleaning the room. While cleaning, the numerical display will show the airflow speed.

Appliance is in auto heating mode



1. When auto mode is used while in heating mode, the appliance is both purifying and heating the air. The appliance will display the target room temperature, not the fan airflow.
2. Once the target room temperature has been reached, the appliance will stop heating the air.
3. If the air quality target has not been met, the fan will continue to run in order to keep purifying the air. If the room temperature falls below the target temperature, the appliance will start to heat again.

Night mode

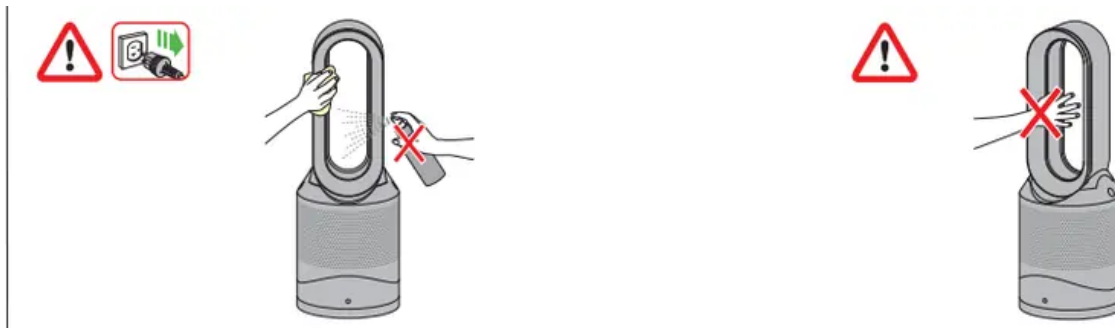
1. When night mode is enabled (indicated by an illuminated crescent moon symbol in the bottom right corner of the display), the display will dim and after 5 seconds will fade to off. The crescent moon symbol remains illuminated.
2. If the appliance is not in auto mode, the airflow speed will reduce to level 4. When night mode is activated, if it is already below level 4, it will remain the same. This can be manually changed if desired. The display will illuminate briefly, then fade as before. If in auto mode the airflow speed will be reduced automatically

Sleep timer

1. The sleep timer will turn your appliance off once the time set has passed.
2. To set the sleep timer, select the desired time. When time reaches zero, the appliance will go into standby mode. To cancel, increase the time until two dashes appear.

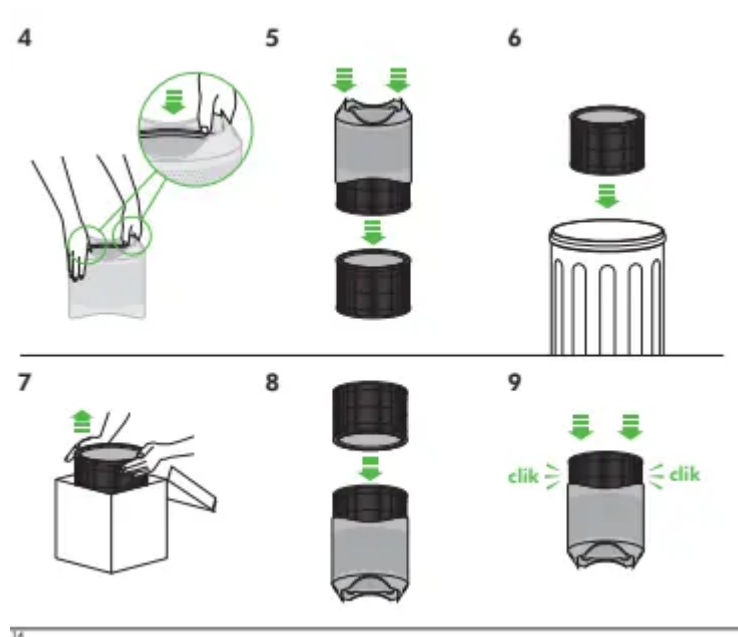
Airflow speed control

- Oscillation control To start the appliance oscillating, press the oscillation control button. To stop the appliance oscillating, press it again. The appliance will not oscillate when the control buttons are pressed.
- Airflow speed control To change the airflow speed press the airflow control button. The digital display will show the new speed; after 3 seconds it will change back to the target temperature.



Clearing blockages

- Ensure the appliance is unplugged. If the appliance has been in use, leave for 1 to 2 hours in order to allow the appliance to cool down completely.
- Look for blockages in the air inlet holes and in the small aperture inside the air loop amplifier. Use a soft brush to remove debris.



Cleaning

1. Unplug from the mains electricity supply. If the appliance has been in use, leave for 1 to 2 hours before cleaning to allow the appliance to cool completely.
2. Dust may accumulate on the surface of the machine. Wipe dust from the loop, filter unit and other parts with a dry or damp cloth when dust accumulates. Do not use detergents or polishes.



- This appliance is hot when in use and for a short period after use. Do not let bare skin touch hot surfaces. If children are present, consider positioning the appliance out of their reach.

Replacing the filter unit

- When your non-washable filter unit needs replacing the appliance will display the pattern shown. To replace the non-washable filter unit, follow these steps.
- Ensure your appliance is unplugged. Your Dyson appliance is programmed to remind you to replace the filter unit after 12 months based on 12 hours usage a day.
- Please note your indicator will activate sooner with more use. The indicator is only a guide and you may need to replace the filter unit more regularly.

Clean the hatch every time the filter is replaced.

- Open the small hatch on the side of the appliance. Use a cotton swab to clean inside and remove any debris. This maintains sensor accuracy and ensures the continuing high performance of the appliance.
- When you have re-assembled your appliance, press and hold the 'Standby ON/OFF' button for 6 seconds on the remote control to reset the filter indicator
- The Dyson Link app will notify you when your non-washable filter needs to be replaced. The filter indicator can also be reset from within the Dyson Link app.

Clearing your Wi-Fi settings

1. Press and hold the ON/ OFF button on the appliance for longer than 20 seconds. It is possible to remove your network details from the appliance.
2. The Wi-Fi symbol will flash alternately between white and green to indicate that your network details have been removed.

LOOKING AFTER YOUR DYSON APPLIANCE

1. Do not carry out any maintenance or repair work other than that shown in this
2. Dyson Operating Manual, or advised by the Dyson Helpline.
3. Always disconnect the plug from the power outlet before inspecting for problems. If the appliance will not operate, first check the power outlet has electricity supply and that the plug is properly inserted into the socket.

OPERATION

- Ensure appliance is fully assembled in line with the instructions before use. Do not dismantle the appliance or use without the loop amplifier fitted.
- The appliance will not operate in heating mode unless the target temperature is above the room temperature.
- Each time the heating mode is selected, it conducts a short calibration cycle.
- Airflow will be automatically controlled during this cycle. Once the calibration cycle is complete, it will revert to the selected airflow speed.
- The appliance will not oscillate when the control buttons are pressed. • Do not lubricate any part of this appliance.

AUTO MODE

- A period of 6 days is required after the appliance is first used for the sensor to calibrate. During this period the appliance may be more sensitive to volatile organic compounds (such as odours) than normal.

CONTROL WITHOUT REMOTE

- The appliance can be controlled through your Dyson Link app.

DYSON LINK APP CONNECTIVITY

1. You must have a live Internet connection in order for the Dyson Link app to work. • The appliance only connects to 2.4GHz networks, which includes most modern routers. Check your router documentation for compatibility.
2. Supported Wi-Fi protocols: – IEEE802.11b (Not recommended) – IEEE802.11g – IEEE802.11n (Support only for 2.4GHz)

TILT FUNCTION

- Carefully hold the base and the main body. Tilt forward or backward for the required airflow angle.

AUTOMATIC CUT-OUT

- For your safety this appliance is fitted with automatic cut-out switches that operate if the appliance tips over or overheats. If the switches operate, unplug the appliance and allow it to cool. Before restarting the appliance check and clear any blockages and ensure the appliance is on a solid level surface.
- In heating mode the appliance will automatically switch 'OFF' after 9 hours of continuous use and will return to standby mode. To restart the appliance, press the power button on either the remote control or the base, or restart via the

CAUTION

- Unscrew the battery compartment on the remote control. Loosen the base and pull to remove the battery.

Do not install backwards or short circuit the batteries.

- Do not attempt to dismantle or charge the batteries. Keep away from fire. • Always replace the screw in the remote control.
- Follow battery manufacturers' instructions when installing new batteries (battery type CR 2032).

NON-WASHABLE FILTER UNIT

Your filter unit is non-washable and non-recyclable.

- To replace your filter unit follow the steps as shown.
- To dispose of your old filter unit: remove it from the appliance and place it in your household waste bin.

A new filter unit can be purchased at www.dyson.com/filter.

DISPOSAL INFORMATION

1. Dispose of the battery in accordance with local ordinances or regulations.
2. Keep the used batteries away from children as these can still harm children if swallowed.
3. Dyson products are made from high grade recyclable materials.

Recycle where possible

- Your filter unit is non-washable and non-recyclable.
- The battery should be removed from the product before disposal.

DYSON CUSTOMER CARE

- If you have a question about your Dyson appliance, call the Dyson Helpline with your serial number and details of where and when you bought the appliance.
- Most questions can be solved over the phone by one of our Dyson Helpline staff.
- If your Dyson appliance needs service, call the Dyson Helpline so we can discuss the available options. If your Dyson appliance is under warranty, and it is a covered repair, it will be repaired at no cost. Your serial number can be found on your rating plate which is on the main body of the appliance.
- Your serial number can be found on your rating plate which is on the base of the appliance.
- If your Dyson appliance needs service, call the Dyson Helpline so we can discuss the available options. If your Dyson appliance is under warranty, and it is a covered repair, it will be repaired at no cost. Your serial number can be found on your rating plate which is on the main body of the appliance.

PLEASE REGISTER AS A DYSON

APPLIANCE OWNER

- To help us ensure you receive prompt and efficient service, please register as a
- Dyson appliance owner. There are four ways to do this:
- Online at www.dysoncanada.c
- Telephone the Dyson Helpline at 1-877-397-6622. • Complete the enclosed Warranty Form and mail it to us. • Smartphone. Download the Dyson Link app and you will be taken through registration as part of the set up.
- This will confirm ownership of your Dyson appliance in the event of an insurance loss, and enable us to contact you if necessary.

LIMITED 2 YEAR WARRANTY

- Your Dyson appliance is warranted against original defects in materials and workmanship for a period of 2 years from the date of purchase, when used for normal domestic purposes in accordance with the Dyson Operating Manual.
- Please retain your proof of purchase. If you do not have your proof of purchase, your warranty will start 90 days after the date of manufacture, according to
- Dyson's records. This warranty provides, at no extra cost to you, all labour and parts necessary to ensure your appliance is in proper operating condition during the warranty period. The replacement of any part of your appliance under warranty will not extend the period of warranty. Any parts which are returned to Dyson will become the property of Dyson. Please call the Dyson Helpline at for more information.
- This limited warranty is subject to the following terms:

WHAT IS NOT COVERED

- Replacement filters. The appliance's filter is not covered by the warranty. • Damage caused by not carrying out the recommended appliance maintenance.
- Dyson Canada Limited shall not be liable for costs, damages or repairs incurred as a result of, due to, or from:
- Purchases of appliances from unauthorized dealers. • Careless operation or handling, misuse, abuse and/or lack of maintenance or use not in accordance with the Dyson Operating Manual.
- Use of the appliance other than for normal domestic purposes within Canada, e.g. for commercial or rental purposes.

Use of parts not in accordance with the Dyson Operating Manual.

- Use of parts and accessories other than those produced or recommended by Dyson.
- External sources such as weather, electrical outages or power surges.
- Repairs or alterations carried out by unauthorized parties or agents.
- Clearing blockages from your appliance.
- Normal wear and tear (e.g. fuse etc.).
- Damage as a result of use not in accordance with the rating plate
- Additionally, this limited warranty does not apply to any appliance that has had the serial number altered or removed.

WARRANTY LIMITATIONS AND EXCLUSIONS

1. Any implied warranties relating to your appliance including but not limited to warranty of merchantability or warranty of fitness for a particular purpose, are limited to the duration of this warranty. This limitation is not allowed by some

2. Provinces and/or Territories and so this limitation may not apply to you.
3. This limited warranty gives you specific legal rights. You may also have other rights which vary by Province and/ or Territory.
4. This limited warranty is not transferable.
5. This limited warranty is only available in Canada.

WARRANTY SERVICE

1. Please fill out and return the Warranty Form or register online at www.dysoncanada.c
2. Before service can take place, the terms of the warranty require that you contact the Dyson Helpline with your model name/number, serial number, date and place of purchase.
3. Please keep your purchase receipt in a safe place to ensure you have this information.
4. All work will be coordinated by Dyson Canada Limited or its authorized agents.
5. Any replaced defective parts will become property of Dyson.
6. Service under this warranty will not extend the period of this warranty.
7. If your appliance is not functioning properly, please call the Dyson Helpline at
8. Most issues can be rectified over the telephone by our trained customer care staff.

Warning

This content is compiled from multiple sources and is provided for reference purposes only. It may not be complete or fully applicable to all situations. If you are unable to resolve your issue, please contact the product manufacturer or an authorized service provider for official support.