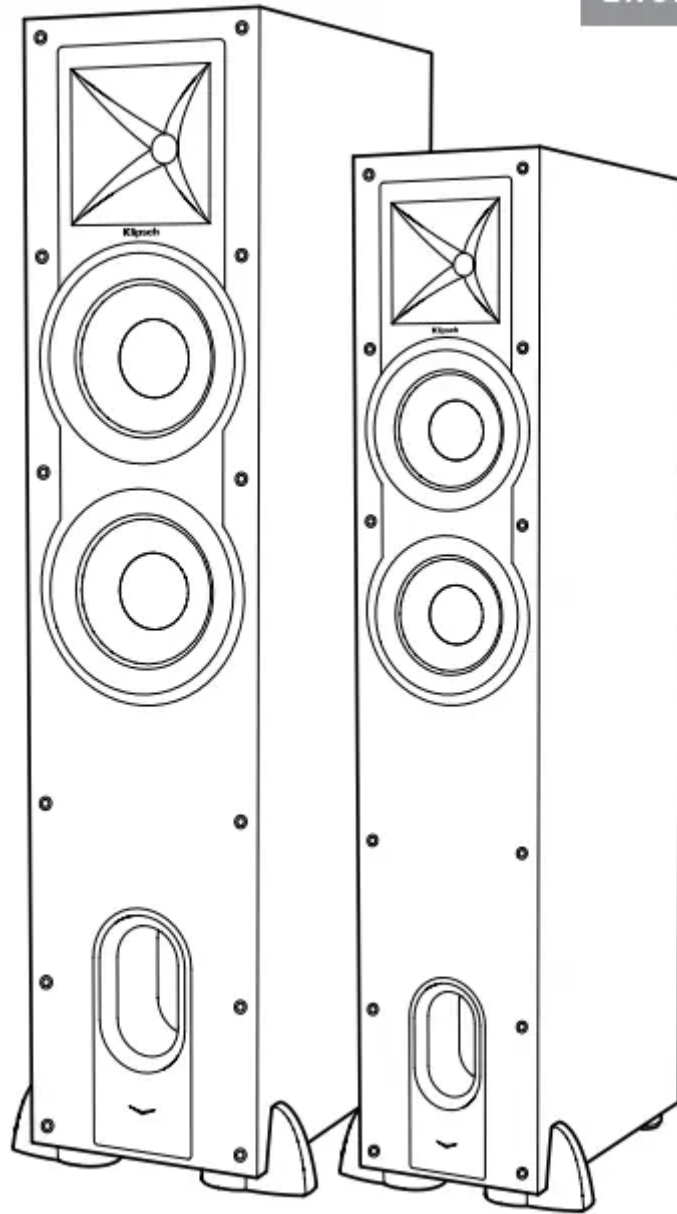
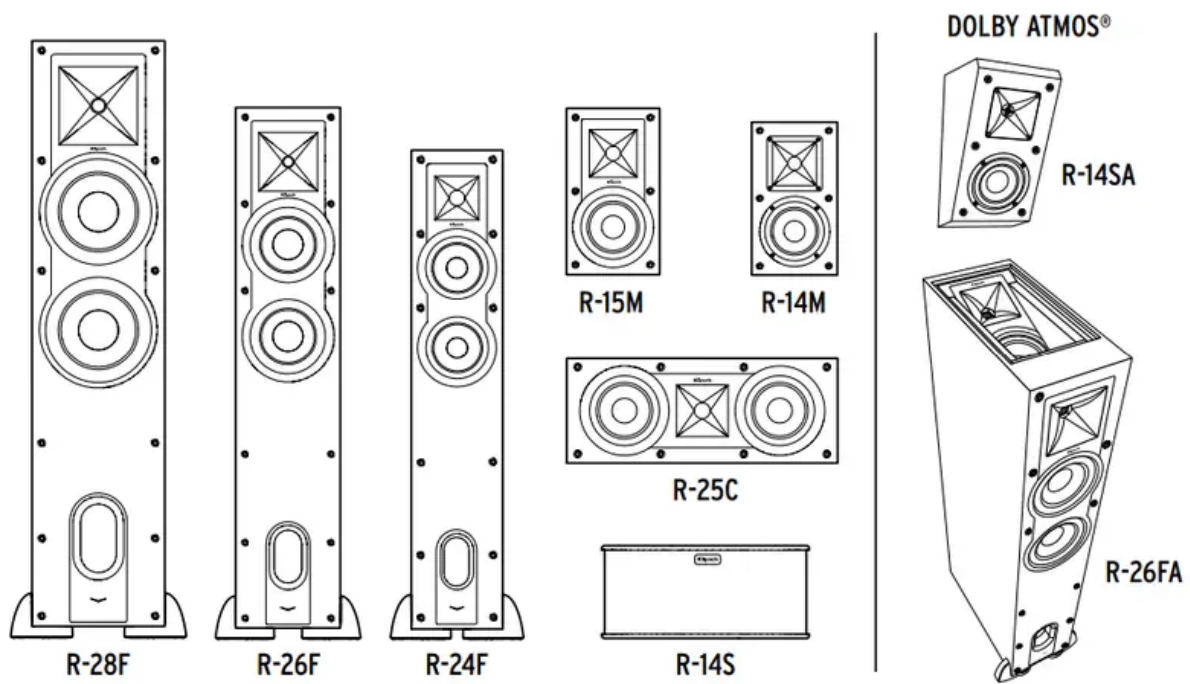


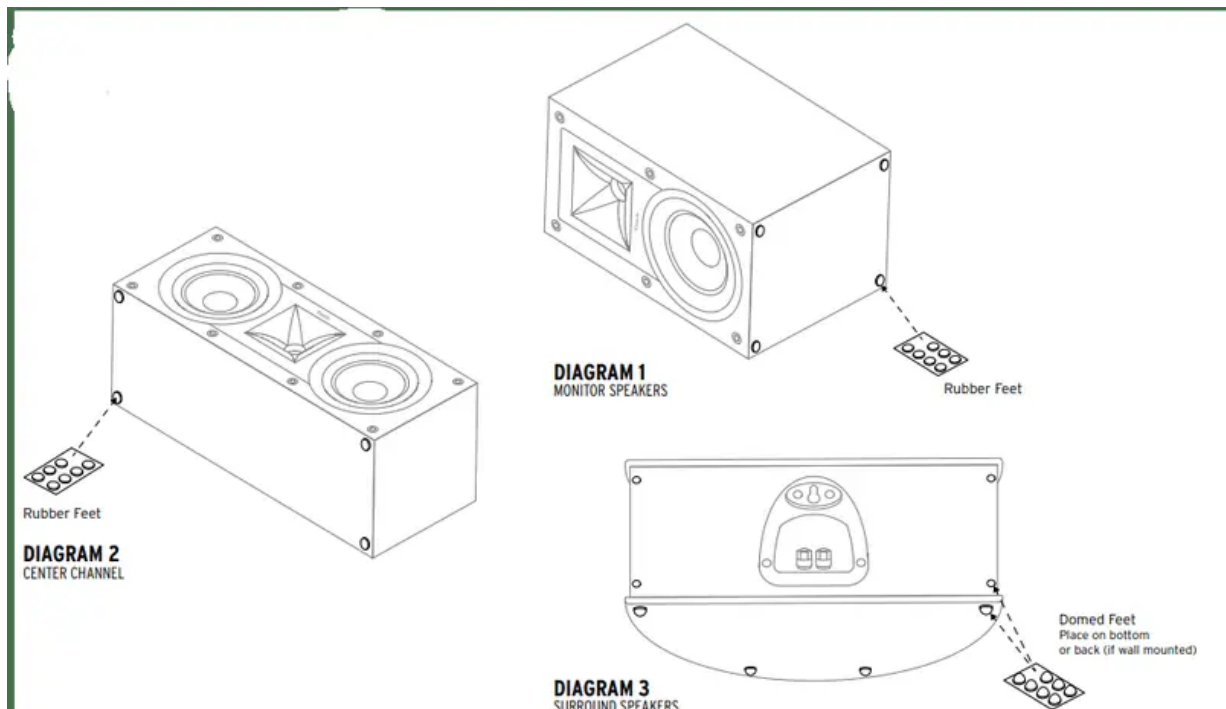
USER MANUAL Speaker





BEFORE YOU START

- Some Klipsch® speakers have feet and other accessories that may need to be installed prior to use. Please refer to Diagrams 1, 2 and 3 for installation.



ROOM PLACEMENT

- **Left and Right Main Channel Speakers** — For optimum performance, Klipsch Group, Inc. (KGI) suggests placing your speakers 6 to 15 feet (1.8 to 4.6m) apart. They may also be toed-in slightly for better stereo imaging. The listening position should be about 1 to 1.5 times the distance separating the speakers. Refer to Figures 1 and 3 for connection and placement.
- **Center Channel Speakers** — Center channel speakers are designed to place dialogue and primary sounds so that they appear to come from the video screen. The speakers should therefore be placed as close to the screen as possible, preferably directly on top of or below the screen. Refer to Figures 1, 2 and 3 for connection and placement.
- **Rear Surround Channel Speakers** — Klipsch WDST surround speakers should be placed approximately 2 feet above the listening position. Typically this will be about 5-7 feet above the floor. The surrounds should be placed on the walls directly adjacent to the listening position. Another option would be on the wall behind the listening position. The final surround speaker placement depends on your room's characteristics. They are designed to recreate the sense of space and ambience that many of today's surround sound technologies provide.
- Refer to Figures 1, 3 and 4 for connection and placement. Please note that surround grilles are fixed and cannot be removed.

CONNECTION

- **Conventional Connection** — Using 16-12 gauge speaker wire, connect the RED "positive" (+) terminal of the LEFT speaker to the RED "positive" (+) terminal of your amplifier's LEFT channel. Connect the BLACK "negative" (-) terminal of the LEFT speaker to the BLACK "negative" (-) terminal of your amplifier's LEFT channel. Repeat this procedure for connecting all remaining speakers to the appropriate amplifier channels. Refer to Figure 3. Make sure that no bare wires from any of the connections touch any other terminals as this could cause a short and damage your equipment.
- Some Klipsch Reference speakers come with dual binding posts that are connected by a metal strip. Do not remove this strip or your speakers will not function correctly. Keep this strip in place and connect your speaker wire to the top set of the binding posts. It is possible to "Bi-wire" a speaker that has two sets of binding posts. Please see your receiver's manual for further instructions.
- **Amplifier Requirements** — Klipsch speakers are highly efficient and will operate easily on a wide variety of amplifiers. All Klipsch speakers are 8-ohm compatible and can be driven to very high levels with low distortion. Due to the high output levels Klipsch speakers are capable of reproducing, exercise caution with the volume control. Excessive volume over long periods can permanently damage your hearing. Overdriving

your amplifier could also damage your speakers. Check with your dealer or amplifier manual to make sure your particular amplifier is best suited to your application. We want you listening for a lifetime.

FIGURE 1
SPEAKER PLACEMENT IN LISTENING AREA

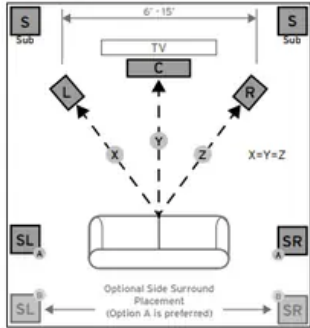


FIGURE 2
CENTER CHANNEL

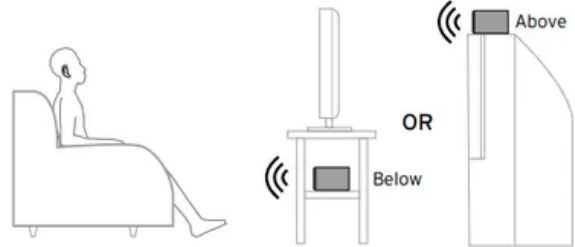


FIGURE 3
STANDARD CONNECTIONS

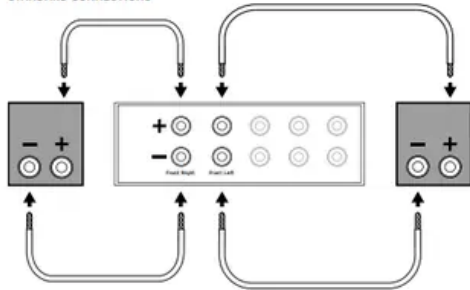
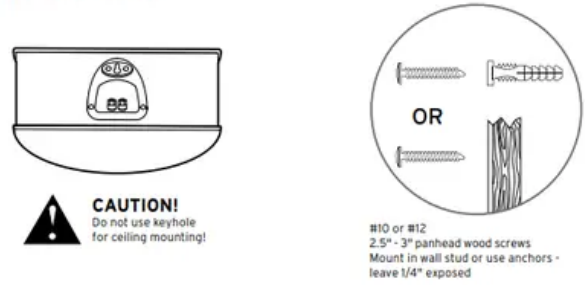
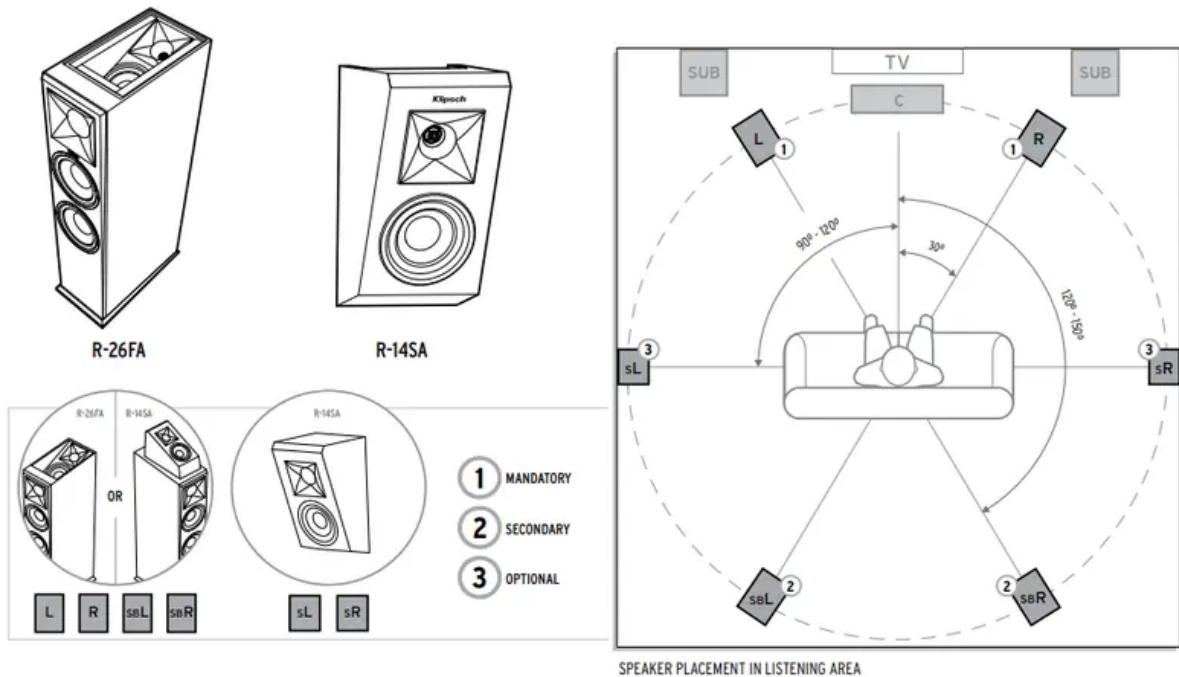


FIGURE 4
WALL MOUNTING SURROUND SPEAKERS



REFERENCE WITH DOLBY ATMOS® TECHNOLOGY



CARE AND CLEANING

- The only thing you should ever need to do to your speakers is dust them occasionally. Never apply any abrasive or solvent-based cleaner or any harsh detergent. You can clean the grilles with the brush attachment of a vacuum cleaner.

Q&A

1. How long of a warranty on these speakers?

- The passive speaker warranty policy can be found here at [klipsch.com/warranty-passive-speakers](https://www.klipsch.com/warranty-passive-speakers).

2. Do you have the packing dimensions? Not the product dimensions?

- 44" - H
- 12 3/4" - W
- 21 1/2" - D

3. I have a new Sony 2 channel 100 watt receiver. Will this be enough to efficiently run these speakers?

- These speakers, while they only look like a pair of floorstanding speakers, are actually 2 speakers built into one. You will have the tower speaker, AND a Dolby Atmos topper built into that tower speaker facing upward as well. However, you will need to run separate channels to both the top speaker, and the tower. This will require 4 channels in order to fully connect both of the R-26FA. That receiver will not work.

4. Are these available in wireless? If no, which receiver with bluetooth & atmos would you recommend? I'm interested to upgrade.

- No, these are not wireless. I only use wired in speakers for better sound quality. You may search for bluetooth audio speakers.

5. What's the wattage?

- The main speakers are 100W continuous (400W peak), and the top mounted speaker is 75W continuous - 150W peak. I have 4 of these speakers set up with two bass amps and the center module for a 7.2.2 type setup. I love these Klipsch speakers. These replaced some 6" Klipsch bookshelf speakers I have used the last 10 years. I am sold on Klipsch

6. Do you need 7 speakers for Dolby Atmos?

- While two Dolby Atmos-enabled speakers, modules, or overhead speakers will deliver a compelling experience, we recommend using four if possible. This will deliver more precisely located and realistic overhead sounds.

7. Is Dolby 7.1 better than Atmos?

- 7.1 Surround: What's the Difference? Dolby Atmos adds overhead sound and improved calibration software, which makes the sound deeper and more precise than traditional Surround 7.1 systems.

8. How many channels is best for Dolby Atmos?

- You must have at least two height channels for a Dolby Atmos system. Therefore, the minimum number of channels for Dolby Atmos is 2.0. 2, which is a stereo speaker system with two overhead/height speakers. However, Dolby recommends four height speakers for the best 3D experience

9. Does music sound better with Dolby Atmos?

- With Dolby Atmos Music, the experience is better. Artists can create soundscapes that are much more seamless and compelling. They can precisely place sound “objects” in your listening space and engage your imagination by moving the objects around. Immersive music is now more affordable, too

10. How many watts should Atmos speakers?

- It can deliver 50 watts per channel into 8-ohm loads or 65 watts per channel into 4-ohm loads. Additionally, the output can be bridged to provide 120 watts to a single 8-ohm speaker.

Warning

This content is compiled from multiple sources and is provided for reference purposes only. It may not be complete or fully applicable to all situations. If you are unable to resolve your issue, please contact the product manufacturer or an authorized service provider for official support.