












# User Manual Washing Machine

## Accessories

Check the accessories and literature in accordance with this list:

1x User Manual		1x Drain hose bracket	
1x Bottom Cover		5x Blanking Plugs	
1x Felt		1x Inlet hose assembly	

### Legend

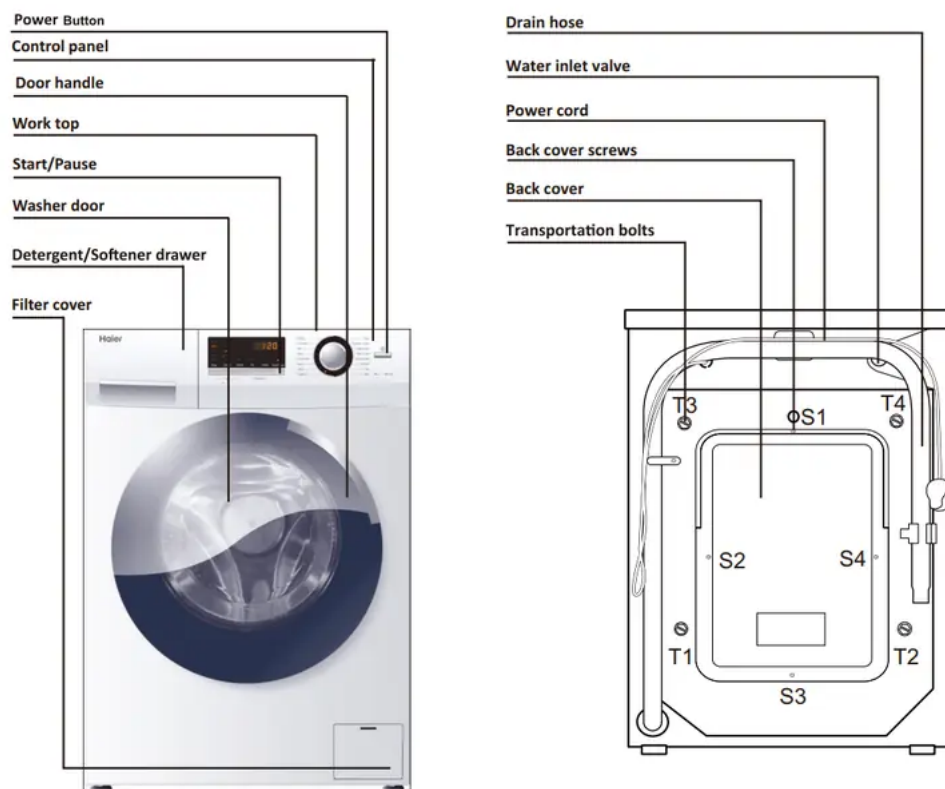
	Yes
	No
	Optional
	Warning! Important safety information!
	General information and tips

## Before Use

### Description

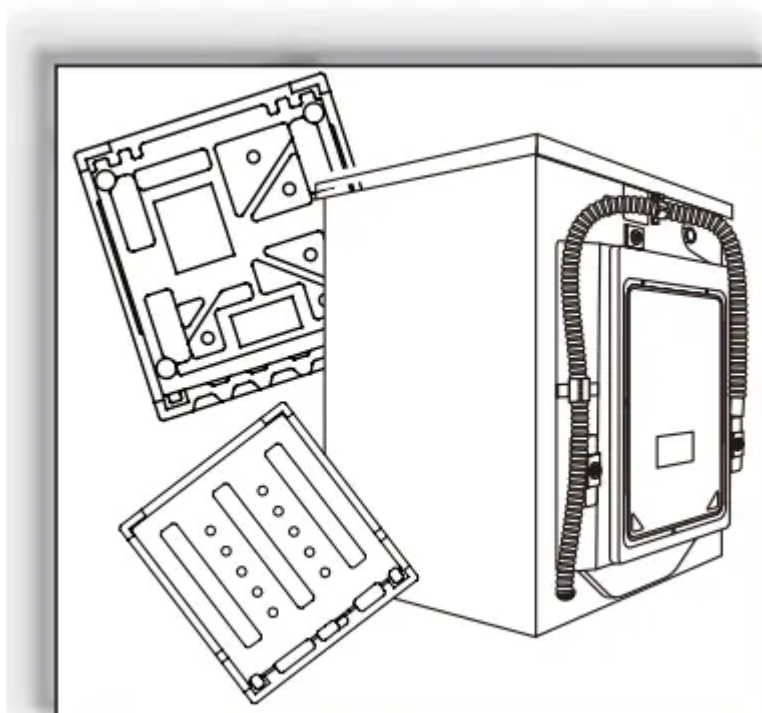
This diagram may be slightly different from the layout of the washing machine you have just purchased.





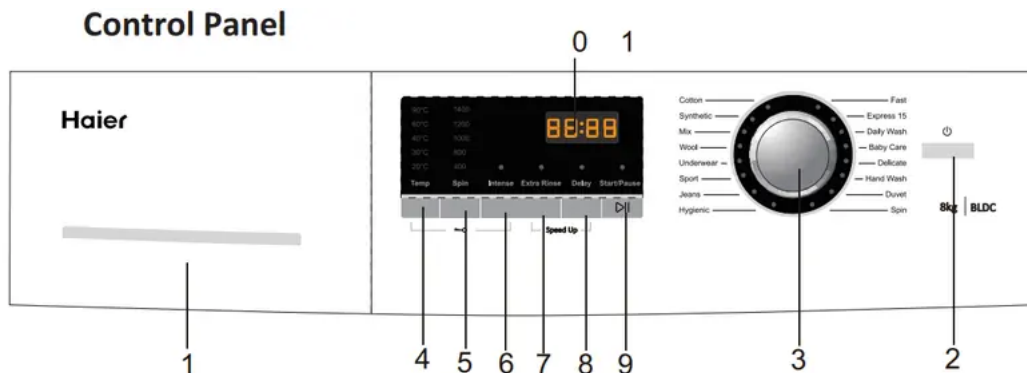
## Preparing the machine

Remove all the packing materials to prevent unsteadiness, including the polystyrene base. Upon opening the package, water drops may be seen on the plastic bag and the porthole. This is normal phenomenon resulting from water tests in the factory.



# Functions

## Control Panel

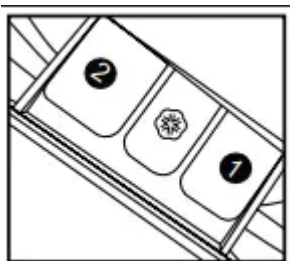


1. Detergent/Softener Drawer
2. Intense button
3. On/Off Button
4. Extra Rinse
5. Program Dial
6. Delay
7. Wash Temp
8. Start/Pause Button
9. Spin Speed
10. LED Display

## Operational Functions

### 1. Detergent distribution drawer

Open the drawer, three compartments can be seen:



Compartment 1: Prewash detergent

Compartment 2: Detergent for programs 1 to 15.

Compartment : Softener, conditioning agent.

The recommendation on the type of detergents is suitable for the various washing temperatures, please refer to the manual of detergent. Use Low Sudsing or Front Loader liquid or powder detergents. Alternatively use detergent pods.

## 2. On/Off Button

Press this button to switch on the washing machine. Press it again to switch it off. Press this button gently for 2 seconds to switch off the machine as buttons are soft touch sensitive.

## 3. Program Dial

By turning the knob clockwise/counterclockwise, the required program can be selected. There are 16 programs available. After a program is selected, the corresponding light will illuminate.

## 4. Wash Temp

Touch this button lightly, the washing temperature will be displayed on the indicator. Select a temperature according to the type of laundry. Note: If there is no indicator light displayed, this means cold wash.

## 5. Spin Speed

Touch this button lightly to select the desired speed. When a speed is set, it will be displayed on the indicator. Note: If there is no indicator light displayed, this means no spinning.



Different water temperatures and spinning speeds can be set for different laundries. Wash using the default settings if there is no special requirement.

## 6. Intense button

If the laundry is very dirty, press this button before starting the program. When the button is pressed, the washing time increases.

## 7. Extra Rinse

Press this button, the washing machine will perform additional rinses. Press the button once to select one additional rinse. The display will show "P-1". Press the button repeatedly and the screen will display "P-2" or "P-3", indicating two or three additional selected rinses. The "extra rinse light" is activated and flashes during the performance. "P-1/2/3" is displayed alternating with the remaining time. The light turns off and the display disappears when the extra rinse ends.



You can select if you require this function when programs 1-15 are used.

## 8. Delay

Touch this button lightly, the washing machine will start operation after a period of time and the corresponding indicator will go on. The range is 0.5-24 hours; each touch of this button

increases a half hour. After the button is set, press the Start/Pause button to start countdown of the set time (the time is displayed on the screen until the program ends).



The delay time must be longer than the program time otherwise the washing machine will start the wash program directly.

## 9. Start/Pause Button

When the washing machine is connected to the power socket and a program is selected, lightly touch this button to start operation. During a wash cycle, touch it lightly operation will stop and the digits on the screen start blinking. Touch it again to resume operation. To cancel a wash program during a wash cycle, touch this button, when the digits on the screen start blinking, press the Power switch, the program will be cancelled.

## 10. LED Display

Information as remaining wash time and error messages will be shown here.



After a wash program is started the display will go on and the remaining wash time decreases. As the water pressure and temperature may differ, the remaining time may be adjusted accordingly. When the laundry is not balanced during spinning, the time may be automatically prolonged.

### To cancel audible alarm

Alarm sound can be cancelled if it is required (not recommended)

Switch on the washing machine and turn the program knob to spin cycle, then press the "Delay" and "Extra rinse" button, hold on for 3 seconds.

The message "BEEP OFF" will be displayed on the screen, indicating that the alarm sound has been cancelled.

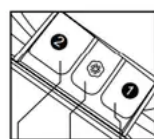
### To reinstate audible alarm

Switch on the washing machine and turn the program knob to spin cycle, then press the "Delay" and "Extra rinse" button, hold on for 3 seconds. The "BEEP ON" message will be displayed on the screen, indicating that the alarm sound has been reinstated.

### Speed Up

press extra rinse and delay at the same time for 3 seconds, then the display area shows " SPEED uP " (display 3S circularly), this function be activated. press these two button again, this " SPEED uP " function will be canceled.

## Program Modes



- 1 Detergent compartment for prewash mode
- 2 Detergent compartment
- ⊙ Compartment for softener

Programme	Temp. Max	Preset	2	3	1	Fibre Type	Preset Spin Speed	SPEEd uP
1 Cotton	90°C	30°C	✓	⊙	✗	Cotton /Synth	1400 rpm	✓
2 Synthetic	60°C	30°C	✓	⊙	✗	Chemical fibre fabrics	1200 rpm	✓
3 Mix	60°C	30°C	✓	⊙	✗	Cotton /Synth	1000 rpm	✓
4 Wool	40°C	---	✓	⊙	✗	Woolen fabrics	800 rpm	✗
5 Under wear	60°C	40°C	✓	⊙	✗	Underwear	1000 rpm	✓
6 Sport	40°C	20°C	✓	⊙	✗	Sports Wear	800 rpm	✗
7 Jeans	60°C	30°C	✓	⊙	✗	Jeans	1000 rpm	✓
8 Hygienic	90°C	90°C	✓	⊙	✗	Cotton	1000 rpm	✓
9 Fast	40°C	40°C	✓	⊙	✗	Cotton	1000 rpm	✗
10 Express 15	40°C	---	✓	⊙	✗	Cotton /Synth	1000 rpm	✗
11 Daily Wash	60°C	30°C	✓	⊙	✗	Cotton fabrics	1000 rpm	✓
12 Baby Care	90°C	40°C	✓	⊙	✗	Cotton /Synth	1000 rpm	✓
13 Delicate	30°C	30°C	✓	⊙	✗	Silk	800 rpm	✗
14 Hand Wash	30°C	30°C	✓	⊙	✗	Cotton fabrics	400 rpm	✗
15 Duvet	40°C	40°C	✓	⊙	✗	Cotton	800 rpm	✓
16 Spin	---	---	✗	✗	✗	---	1000 rpm	✗

Yes ✓

Optional ⊙

No ✗

## Consumption Table

Program	Max Load HWF80BW2/HWF85BW1	Temp.	Washing Time
Cotton	8 kg / 8.5 kg	30°C	Auto
Synthetic	4 kg / 4.5 kg	30°C	Auto
Mix	4 kg / 4.5 kg	30°C	Auto
Wool	2 kg / 2 kg	---	0:48 h
Under wear	4 kg / 4.5 kg	40°C	1:03 h
Sport	4 kg / 4.5 kg	20°C	0:25 h
Jeans	4 kg / 4.5 kg	30°C	1:12 h
Hygienic	2 kg / 2 kg	90°C	2:06 h
Fast	4 kg / 4.5 kg	40°C	1:00 h
Express 15	2 kg / 2 kg	---	0:15 h
Daily Wash	4 kg / 4.5 kg	30°C	0:51 h
Baby Care	4 kg / 4.5 kg	40°C	1:30 h
Delicate	4 kg / 4.5 kg	30°C	0:41 h
Hand Wash	2 kg / 2 kg	30°C	0:46 h
Duvet	2 kg / 2 kg	40°C	1:12 h
Spin	8 kg / 8.5 kg	---	0:07 h



The actual water temperature may differ from the declared cycle temperature. If the machine is used for commercial purposes the warranty will be void. Do not use for purposes other than that which the machine is designed for. Follow the instructions given on the label of each garment and wash only machine-washable garments.



Energy Label Program Settings:" Cotton, 40°C, Intense,1400rpm



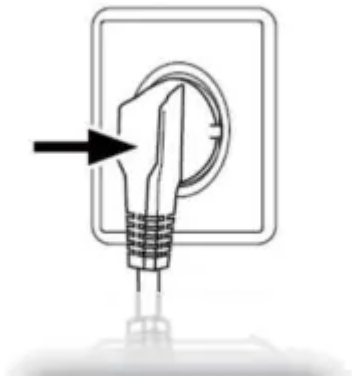
Detergent dissolvent method: Dissolve the detergent first and pour the dissolved detergent into the machine when the main wash starts.

## Washing Methods



This washing machine is for domestic use only. If the machine is use for commercial purpose the guarantee will not be valid anymore. Do not use it for purposes other than that for which it was designed. Follow the instructions given on the label of each garment and wash only machine-washable garments.

### Power Supply



Connect the washing machine to the power supply (220V to 240V~/50Hz).

### ***Water Connection***



Turn on the tap. The water must be clean and clear.



Before use, check for leaks in the joints between the tap and the inlet hose by turning on the tap.

### ***Preparing the Laundry***



Sort out clothes according to fabric (cotton, synthetics, wool or silk) and to how dirty they are.


Separate white clothes from colored ones. Wash them first by hand to check if they fade or run.

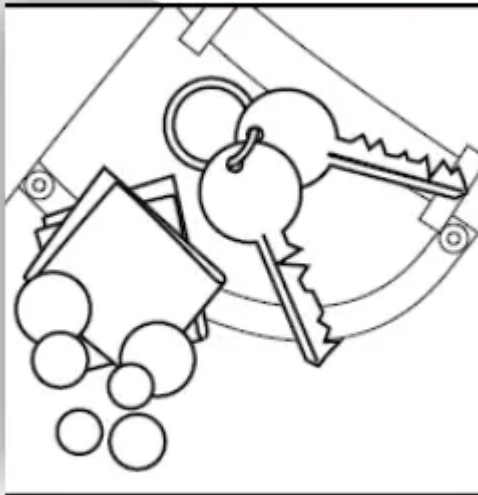
Garments without hems, underwear, and finely woven textile such as fine curtains are to be put into wash bag (it is better not to wash them in a washing machine).

Close zippers and hooks, make sure the buttons are sewn on tightly and place small items such as socks, belts, bras, etc. in the wash bag.

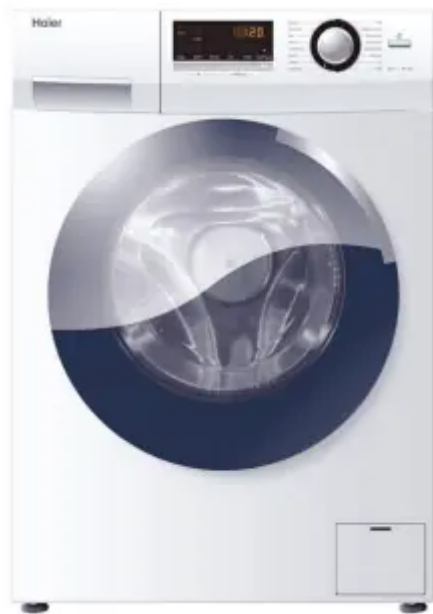
Unfold large pieces of fabric such as bedsheets , bedspreads, etc.

Turn shirts inside out.

 Attention: Small parts (like buttons, etc) may lead to repair work which user has to pay by him and can cause damage in the machine. Empty pockets (keys, coins, etc.) and remove the harder decorative objects (e.g. brooches).



## ***Loading the appliance***



Open the washer door put in the laundry piece by piece. Close the door tightly.

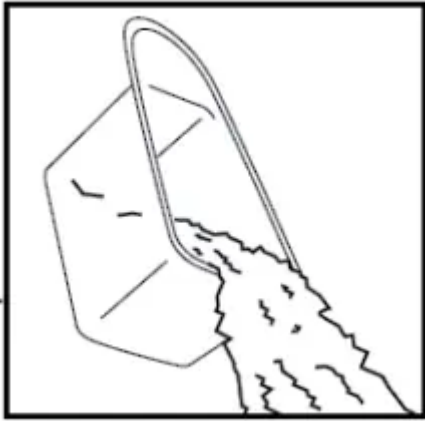
When using the washing machine, let it run unloaded for one program to prevent the laundry from being tainted by oil or dirty water from the washing machine. Before washing you should run the machine, but with detergent, with 60°C program.

Do not overload the washing machine. Note the different maximum load according to programmes. Rule of thumb for maximum load: Keep six inches between load and drum top. Close the door carefully. Make sure that no pieces of laundry are pinched.

## ***Selecting Detergent***

The washing efficiency and the performance is determined by the quality of detergent used. Special non-foaming detergent produces good washing results. Use specific detergents for synthetic and woollen goods. Do not use dry cleaning agents such as trichloroethylene and similar products.

- Do not add more detergent than needed; otherwise, it may cause the situations as following and washing machine malfunction impacting washing machine's life.
- Due to the increasing foam, the rinse time will be longer than normal;
- The foam may overflow from the detergent drawer because of the increasing pressure of the foam;
- It may remain foam without cleaning out after the final spinning cycle.

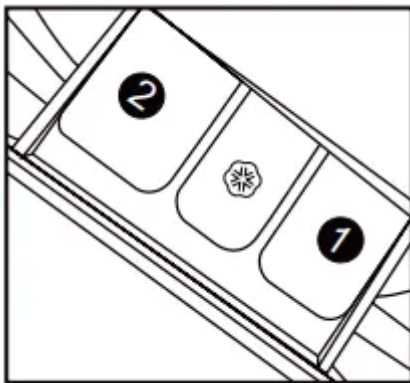


**Recommendation:**

- Clean the detergent drawer once a week.
- Please follow the dosage recommendation on the powder or liquid detergent package.

***Adding Detergent***

Slide out the detergent drawer and put the required detergent and softening agent into the corresponding compartments. Push back the drawer gently. (Refer to the instructions on the drawer)



- For prewashing program, detergent should be added to both compartments 1 and 2.
- For other programs, do not add detergent to compartment 1.
- Use liquid detergent according to the instructions on its package. not use liquid detergent if the prewash mode or "Delay" is selected.
- Do not overuse softener; otherwise, it will damage the artificial fibers.

## Selecting program



To get the best washing results, an appropriate washing program should be selected according to the laundry type. Please turn the program knob to select the right program.

## Selecting function

Select the required options. (Refer to the "Control panel" pages 8,9 and 10)

## Setting washing temperature

Press and hold down the temperature button until the desired temperature is selected.

## Setting spin speed

Press and hold down the speed button until the desired speed is selected. See "Operational functions" on the "Control panel" pages (08 and 09) for selecting temperature and spin speed. It is advisable to select the recommended value.

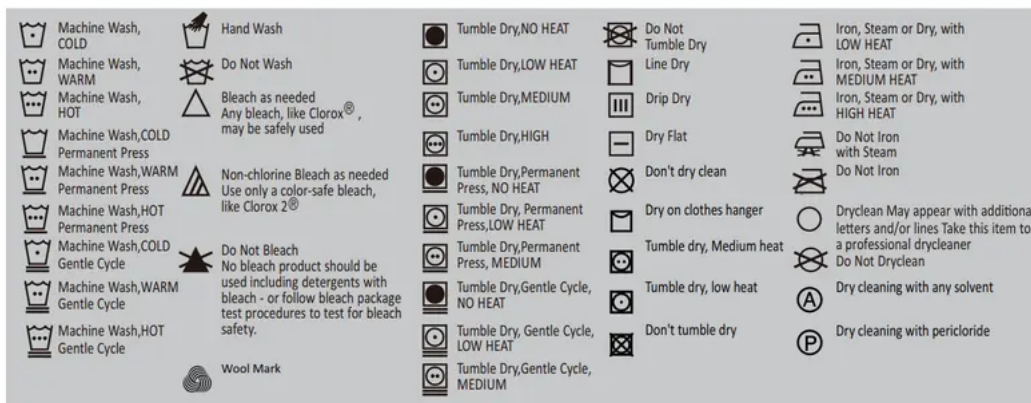
## Washing

Press the Start/Pause button. The washing machine will operate according to the preset programs. The washing machine will stop operation automatically when a washing cycle ends. The "End" sign will appear on the display. Open the washer door and take out the laundry.

## After washing

Turn off the water supply and unplug the power cord. Open the washer door to prevent formation of moisture and odors. Leave the door open while not used.

## Care Chart



## Load Reference

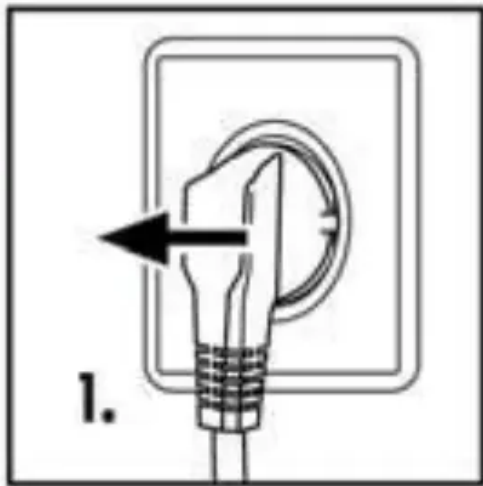
Material	
Bed Sheet	
Blanket	
Blended fabric clothes	
Jackets	
Jeans	
Overalls	
Ladies Pyjamas	
Shirts	
Socks	B
T-Shirts	
Underwear	B

## Maintenance

### Cleaning and Care

#### *After washing*

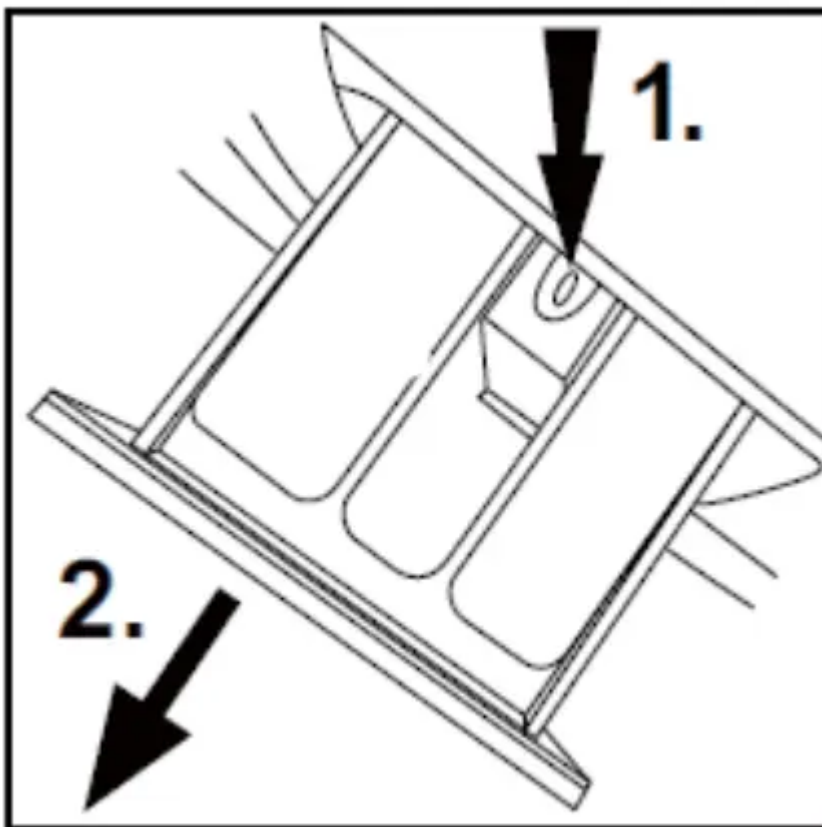
Turn off the water supply and remove the electrical plug after each wash. Open the washer door to prevent formation of moisture and odors. If the washing machine is left idle for a long period, drain the water in the machine and replace the drain hose.



### ***Cleaning the detergent drawer***

*Take always care there are no detergent residues.*

Clean the drawer regularly :



1. Pull out the drawer until it stops.
2. Press the release button and remove the drawer.
3. Flush the drawer with water until it is clean and insert the drawer back in the appliance.

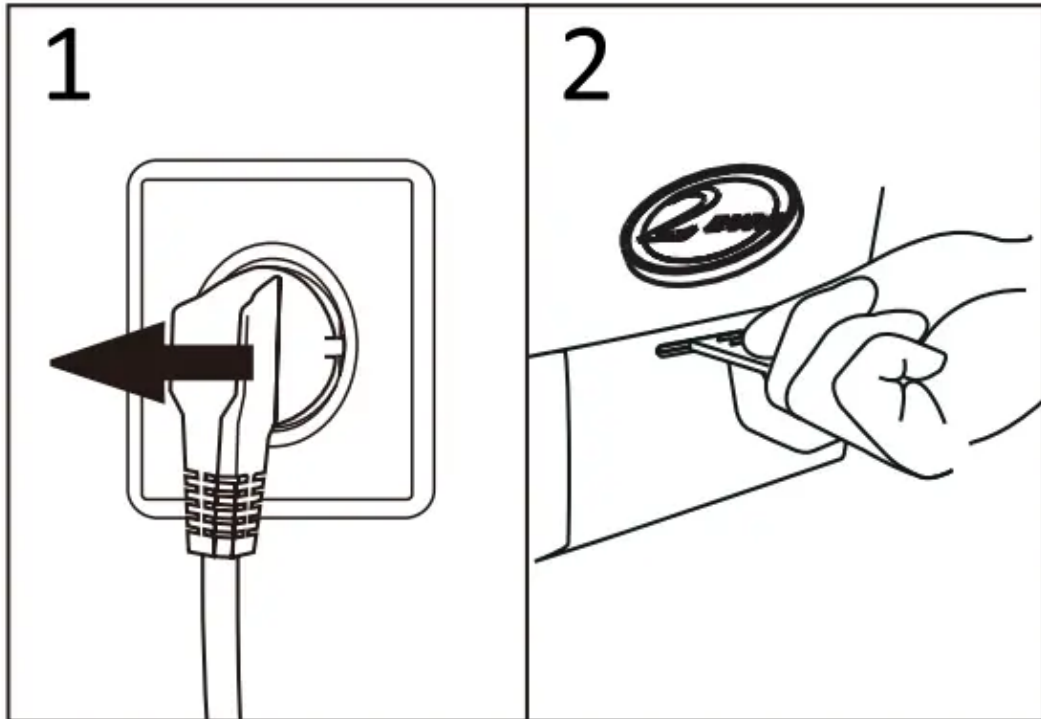
### ***Cleaning the machine***

Unplug the machine during cleaning and maintenance. Use a soft cloth dampened with soap liquid to clean the machine case and rubber components. Do not use organic chemicals or corrosive solvents.

### ***Cleaning the filter***

Clean the filter once a month:

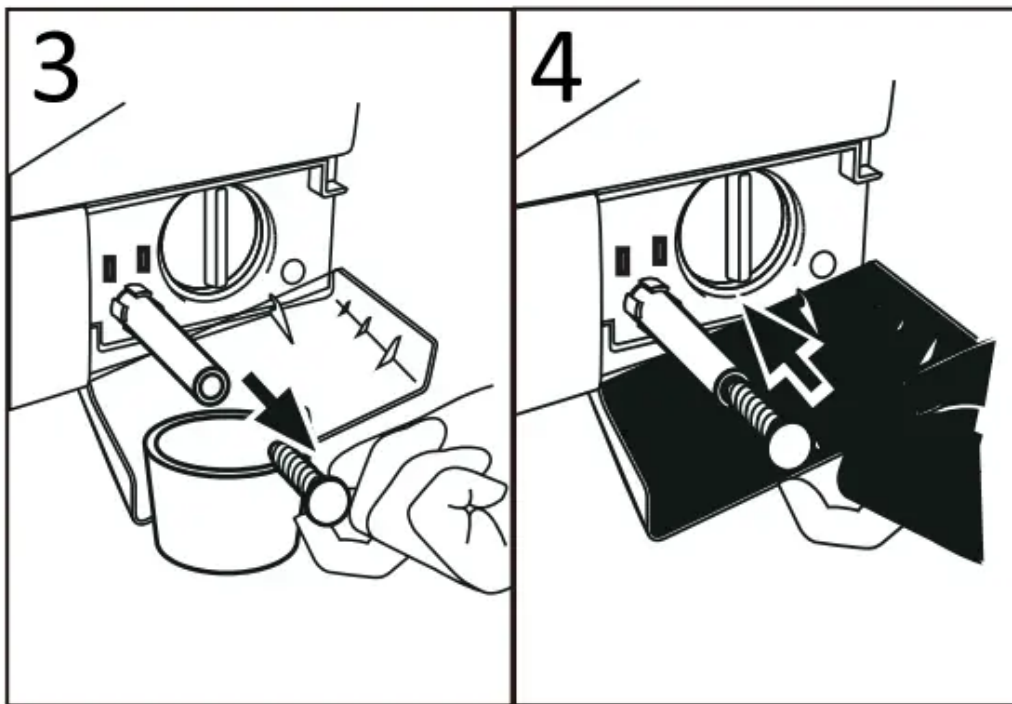
1. Turn off and unplug the machine (Fig.1).



2. Open service flap. You can either use a coin or a screwdriver (Fig.2) .

3. Provide a flat container to catch leach water (Fig.3). There could be bigger amounts!

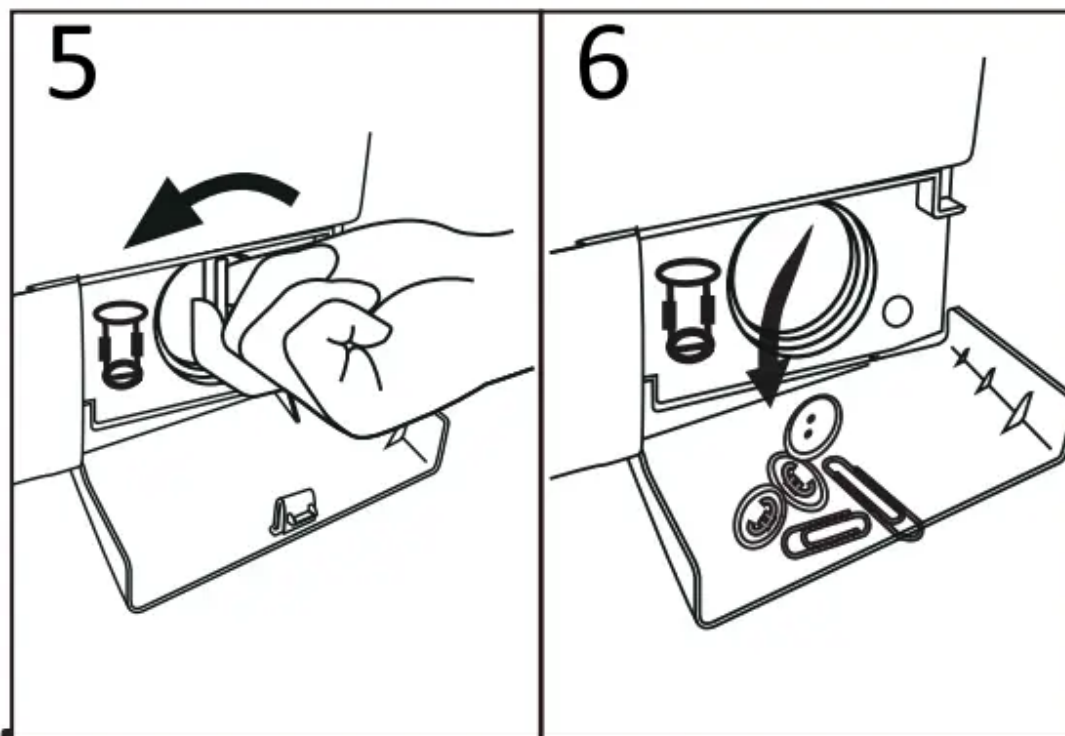
4. Pull the drainhose out and hold its end above the container (Fig.3).



5. Take the sealing plug out of the drainhose (Fig.3). and push it back into the machine(Fig. 4).

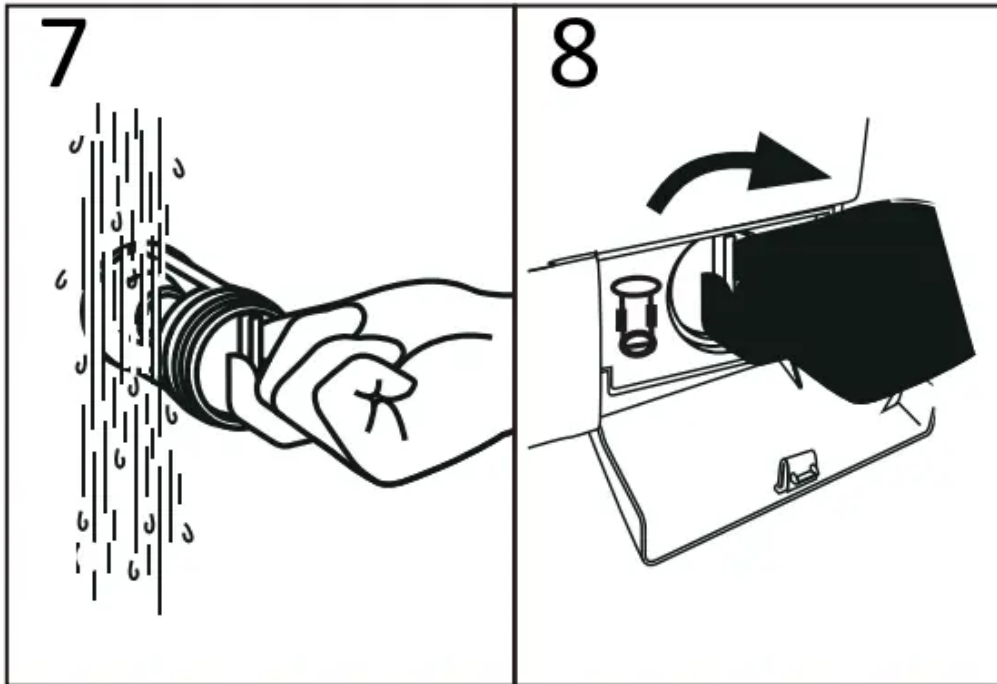
6. After complete drainage close drainhose, and push it back into the machine(Fig.4).

7. Unscrew and remove counter clockwise the pump(Fig.5)



8. Remove contaminants and dirt (Fig.6).

9. Clean carefully pump filter, e.g. using running water((Fig.7).

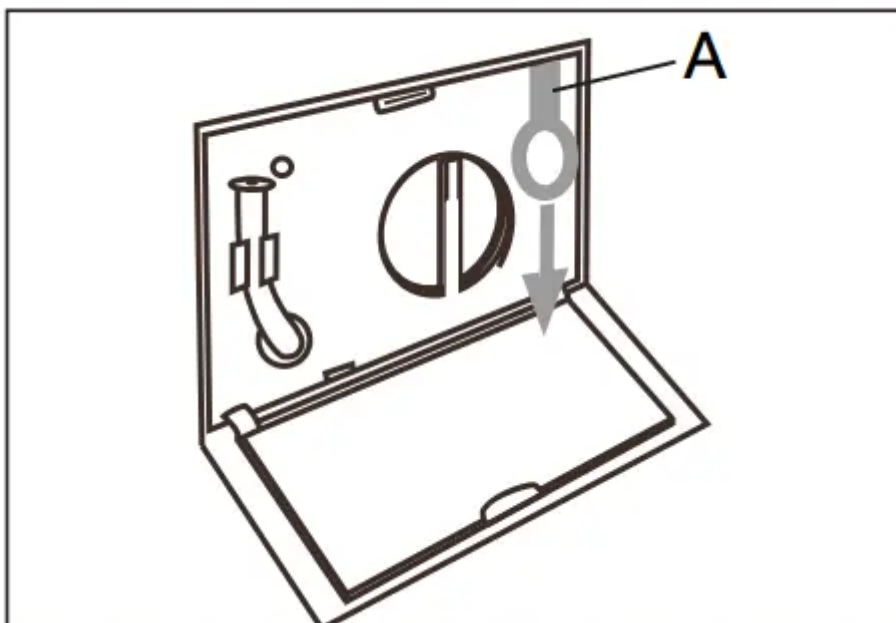


10. Refix itthoroughly((Fig.8).

11. Close service flap.

- The filter must be in place, or it may lead to leakage.
- Place a container under th ter, to collect any excess water that may come out of the drain pump


***In case of power failure***



The current programme and its setting will be saved. When power supply is restored operation will be resumed.

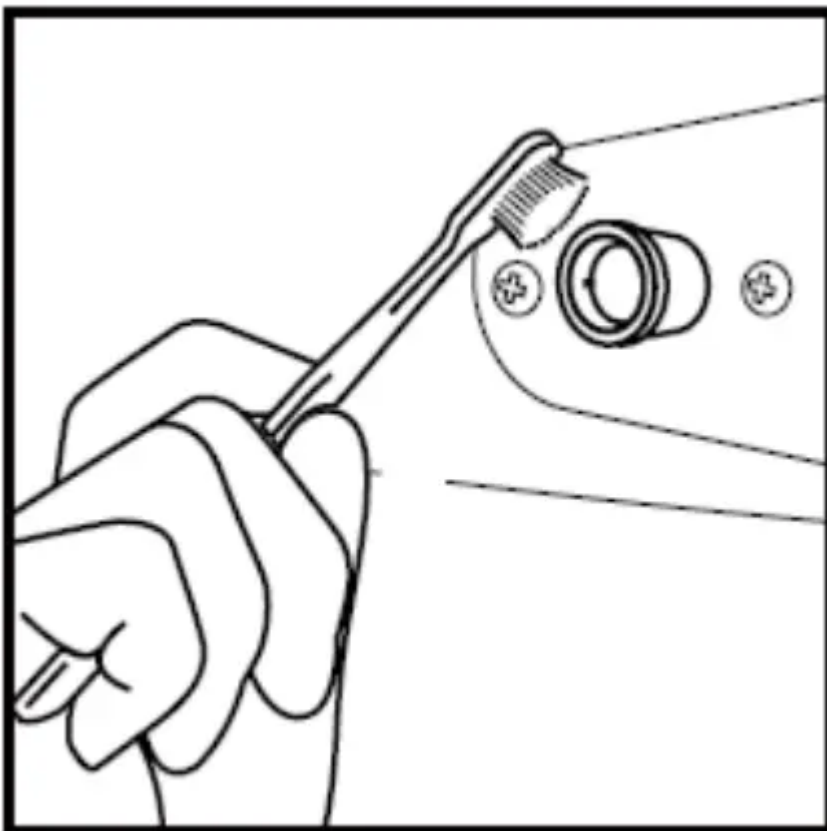
If a power failure cuts an operating wash programme door opening is mechanically blocked. To get out any laundry water level should not be seen in the glassy porthole of the door. - Danger of burns!

Not till then pull lever beneath service flap until door is unlocked by a gentle click. Afterwards refix all parts.

 Power-off memory function: In case of abrupt power failure or the need to cut off the power during a program cycle, the present settings will be saved and the preset operation will resume when the power is on again.

### ***Water inlet valve and inlet valve filter***

To prevent blockage to the water supply by ingress of foreign substances, clean the water inlet valve and inlet valve filter regularly.



### ***Moving the machine***

If the machine is to be moved to a distant location, replace the transportation bolts removed before installation to prevent damage as shown below.

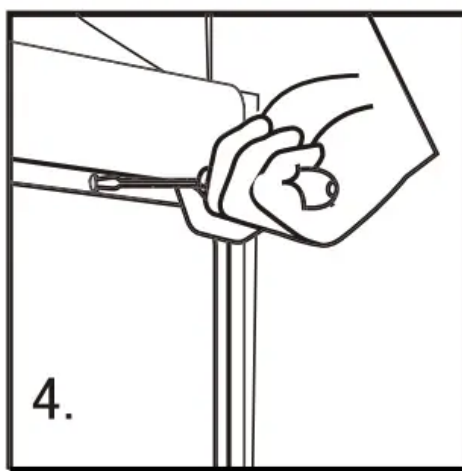
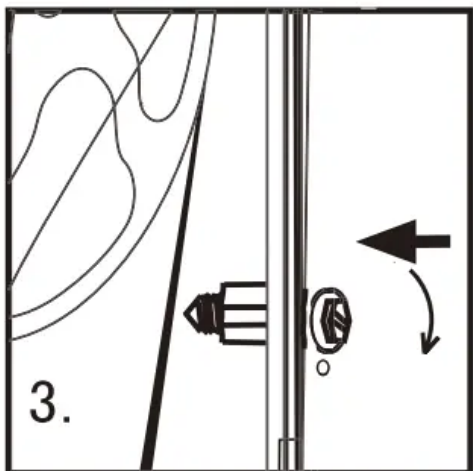
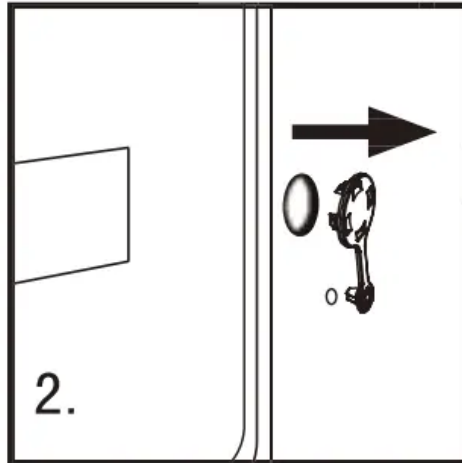
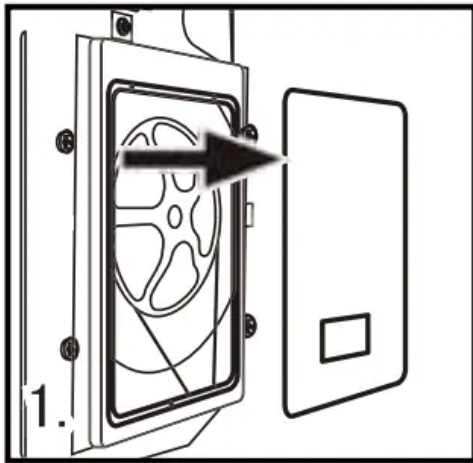
Remove the back cover.

Remove the blanking plugs.

Insert the plastic stabilizers and the transportation bolts.

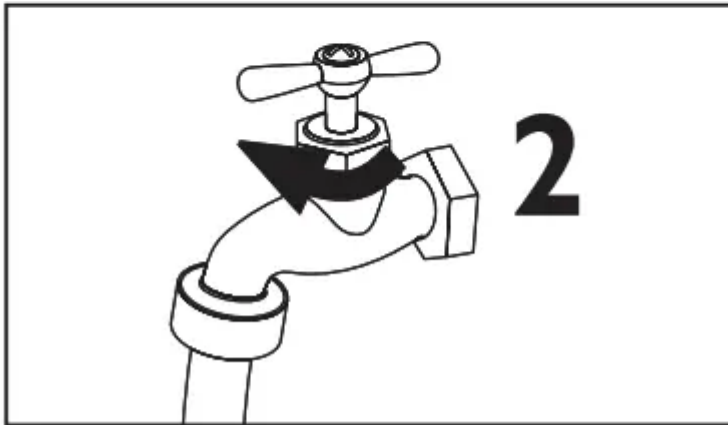
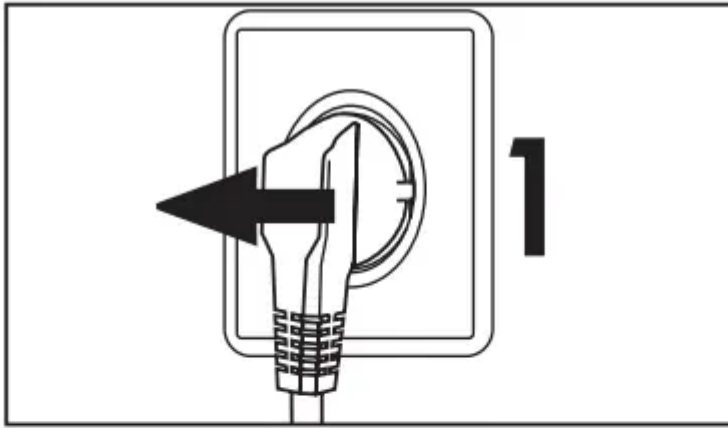
Tighten the bolts with a spanner.

Replace the back cover.



### ***Long periods of disuse***


If the appliance is left idle for a longer period, pull out the electrical plug (1) and turn off water supply (2). Open the door to prevent formation of moisture and odours. Let door open while not used.




Before next usage check carefully power cord, water inlet and drain hose. Make sure everything is properly installed and without leakage.


## Display Codes


### *Display Codes and Special functions*


<b>Codes</b>	<b>Causes</b>	<b>Solutions</b>
<b>CLr</b> <b>FLtr</b>	Drainage error, water not emptied within 6 minutes.	 Clean the pump filter and check the drain hose for blockage. If error still exists, please contact the maintenance personnel.
<b>E2</b>	Door is not properly shut.	Shut the door properly, and then press the Start/Pause button.
<b>F3</b>	Temperature sensor not properly connected or damaged.	Contact the maintenance personnel.
<b>F4</b>	Heater error (Appears at the end of a cycle).	Contact the maintenance personnel.
<b>E4</b>	Water level not met in 8 minutes . The height of the drain hose is below 80 cm. The drain hose is in water.	Make sure that tap is turned on, and water pressure is normal. If problem still exists, please contact the maintenance personnel. Install drain hose within 80-100 cm of height. Make sure the drain hose is not in water.
<b>F7</b>	Motor Error	Contact the maintenance personnel
<b>E8</b>	Water exceeds protective level.	Contact the maintenance personnel
<b>FA</b>	Water level sensor error.	Contact the maintenance personnel
<b>FC1</b>	Abnormal communication error display board and motor	Contact the maintenance personnel
<b>FC2</b>		

	Abnormal communication error display board and power board	Contact the maintenance personnel
<b>End</b>	End of wash cycle.	
<b>19:30</b>	Status information: Preset time for delayed operation.	
<b>1:25</b>	The remaining time is 1 hour 25 minutes.	
<b>UNb</b>	Washing machine has an unbalanced load protection function. When unbalanced weight is greater than allowable maximum, the washing machine will not spin and will run at a speed to avoid abnormal vibration and noise	<ol style="list-style-type: none"> <li>1. In case washing 1 piece of laundry (carpet, bed sheet, table sheet, etc) make it symmetrical inside the drum.</li> <li>2. Lower the wet weight of laundry pieces by wringing manually and placing them back in the drum in symmetrical position.</li> <li>3. Take out and then reposition the laundry pieces inside the washing machine in a more balanced position on the inner wall of the drum.</li> <li>4. Add 1 or 2 pieces of laundry into the drum to reduce the unbalanced load effects.</li> <li>5. Restart the spin cycle by closing spin programme. In case the failure persists, please ask a qualified technician to repair it.</li> <li>6. Select a lower spin speed, and if OK then select Spin program and a higher spin speed..</li> </ol>

 Control panel lock function: Press the "Temp." and the "Intense 11" buttons simultaneously for 3 seconds after starting a program. It shows reveal bring "clot". It can no longer be changed by operating buttons or knobs. To unlock press the "Temp." and Intense buttons again for 3 seconds.

 Power-off memory function: In case of abrupt power failure or the need to cut off the power during a program cycle, the present settings will be saved and the preset operation will resume when the power is on again.

 To cancel a program. Press the "Start/Pause" button, then switch off the power and the program is automatically cancelled. Turn the program selector again to choose another program.

 During the spin process, if too much foam is inspected, in order to protect the motor, the washing machine will eliminate the foam automatically; the motor will stop and the drain pump will drain the water continuously for 90 seconds. If it happens more than 3 times, the motor will stop until the end of cycle without spinning.

# Trouble-Shooting



Problem	Causes	
<b>Washing machine fails to operate.</b>	<ul style="list-style-type: none"> <li>• Poor connection to the power supply.</li> <li>• Power failure.</li> <li>• The washer door is not properly closed. Machine has not been switched on.</li> </ul>	
<b>Washing machine cannot be filled with water.</b>	<ul style="list-style-type: none"> <li>• The "Start/Pause" button is not pressed.</li> <li>• Water tap is not turned on.</li> <li>• Water pressure is less than 0,03 MPa.</li> <li>• The inlet hose is kinked.</li> <li>• Water supply failure.</li> <li>• The program knob is not properly set. The washer door is not properly closed. The inlet hose filter is blocked.</li> </ul>	
<b>Machine is draining while being filled.</b>	<ul style="list-style-type: none"> <li>• The height of the drain hose is below 80 cm.</li> <li>• The drain hose is in water.</li> </ul>	
<b>Drainage failure.</b>	<ul style="list-style-type: none"> <li>• Drain hose is blocked.</li> <li>• Drain hose end is higher than 100 cm above the floor level.</li> <li>• The filter is blocked.</li> </ul>	

<b>Strong vibration while spinning.</b>	<ul style="list-style-type: none"> <li>• Not all transportation bolts have been removed.</li> <li>• Washing machine is located on an uneven surface or is not level.</li> <li>• Machine load is over 8kg.</li> </ul>	
<b>Operation stops before completing wash cycle.</b>	<ul style="list-style-type: none"> <li>• Water or electricity failure.</li> </ul>	
<b>Operation stops for a period of time.</b>	<ul style="list-style-type: none"> <li>• Washing machine gives an error message.</li> <li>• Washing machine is in soaking cycle?</li> </ul>	
<b>Excessive foam in the drum, which is spilled to the distribution drawer.</b>	<ul style="list-style-type: none"> <li>• The detergent is not a low-foaming type or for manual wash.</li> <li>• Excessive use of detergent.</li> </ul>	
<b>Automatic adjustment of the washing time.</b>	<ul style="list-style-type: none"> <li>• The washing program duration will be adjusted</li> </ul>	
<b>Spinning fails</b>	<ul style="list-style-type: none"> <li>• Unbalance of the laundry</li> </ul>	

**Warning**



This content is compiled from multiple sources and is provided for reference purposes only. It may not be complete or fully applicable to all situations. If you are unable to resolve your issue, please contact the product manufacturer or an authorized service provider for official support.

---

Document generated by [ManualsFile](#)

