

IMPORTANT SAFEGUARDS

When using electric appliances, basic safety precautions should always be followed, including the following:

1. Read all instructions.
2. To protect against risk of electrical shock, do not put cord, plug, base, or motor in water or other liquid.
3. Close supervision is necessary when any appliance is used by or near children.
4. Unplug cord from outlet when not in use, before putting on or taking off parts, and before cleaning.
5. Avoid contacting moving parts.
6. Do not operate any appliance with a damaged cord or plug, or after the appliance malfunctions, or is dropped or damaged in any manner. Call our toll-free customer service number for information on examination, repair or electrical or mechanical adjustment.
7. The use of attachments, including canning jars, not recommended or sold by the appliance manufacturer may cause a risk of injury to persons.
8. Do not use outdoors.
9. Do not let cord hang over edge of table or counter, or touch hot surfaces, including the stove.
10. Keep hands and utensils out of jar while blending to reduce the risk of severe injury to persons or damage to the blender. A rubber spatula may be used but must be used only when blender is not running.
11. Blades are sharp; handle carefully especially when assembling, disassembling or cleaning inside blender jar.
12. Do not use a broken, chipped, or cracked blender jar.
13. Do not use broken, cracked, or loose cutting blades.
14. To reduce the risk of injury, never place cutting assembly blades on base without jar properly attached.
15. Always operate blender with lid in place.
16. When blending hot liquids, remove center-piece of two-piece lid. Hot liquids may push lid off jar during blending. To prevent possible burns: Do not fill blender jar beyond the 3 cup (750 ml) level. With the protection of an oven mitt or thick towel, place one hand on top of lid. Keep exposed skin away from lid. Start blending at lowest speed.

17. Screw on cutting assembly firmly. Injury can result if moving blades accidentally become exposed.
18. If the jar should turn when the motor is switched ON, switch OFF immediately and tighten jar onto cutting assembly.
19. Do not leave blender unattended while it is operating.
20. To disconnect cord, turn the control to OFF. Then remove plug from wall outlet.
21. Do not use appliance for other than intended purpose.

SAVE THESE INSTRUCTIONS!

Other Consumer Safety Information

This appliance is intended for household use only. Use for food or liquids only.

WARNING! Shock Hazard: This appliance has a polarized plug (one wide blade) that reduces the risk of electric shock. The plug fits only one way into a polarized outlet. Do not defeat the safety purpose of the plug by modifying the plug in any way or by using an adapter. If the plug does not fit fully into the outlet, reverse the plug. If it still does not fit, have an electrician replace the outlet.

The length of the cord used on this appliance was selected to reduce the hazards of becoming tangled in or tripping over a longer cord. If a longer cord is necessary, an approved extension cord may be used. The electrical rating of the extension cord must be equal to or greater than the rating of the appliance. Care must be taken to arrange the extension cord so that it will not drape over the countertop or tabletop where it can be pulled on by children or accidentally tripped over.

Do not place blender jar in the freezer filled with food or liquid. The contents may freeze and may result in damage to the cutting blades, jar, blender and possibly result in personal injury.

NOTICE: To prevent leakage of liquids from your blender jar, the round rubber gasket must be properly placed between jar and cutting assembly as shown in the diagram on page 4.

Wattage/Peak Power Information

The wattage/ampere rating of the blender is determined by an Underwriter's Laboratory test and is based on available cutting blades and jar combinations that may not be provided with your unit, but are available as replacement parts. This is a measure of input wattage/amperes after 30 seconds of operation. The blender as provided may draw significantly less power.

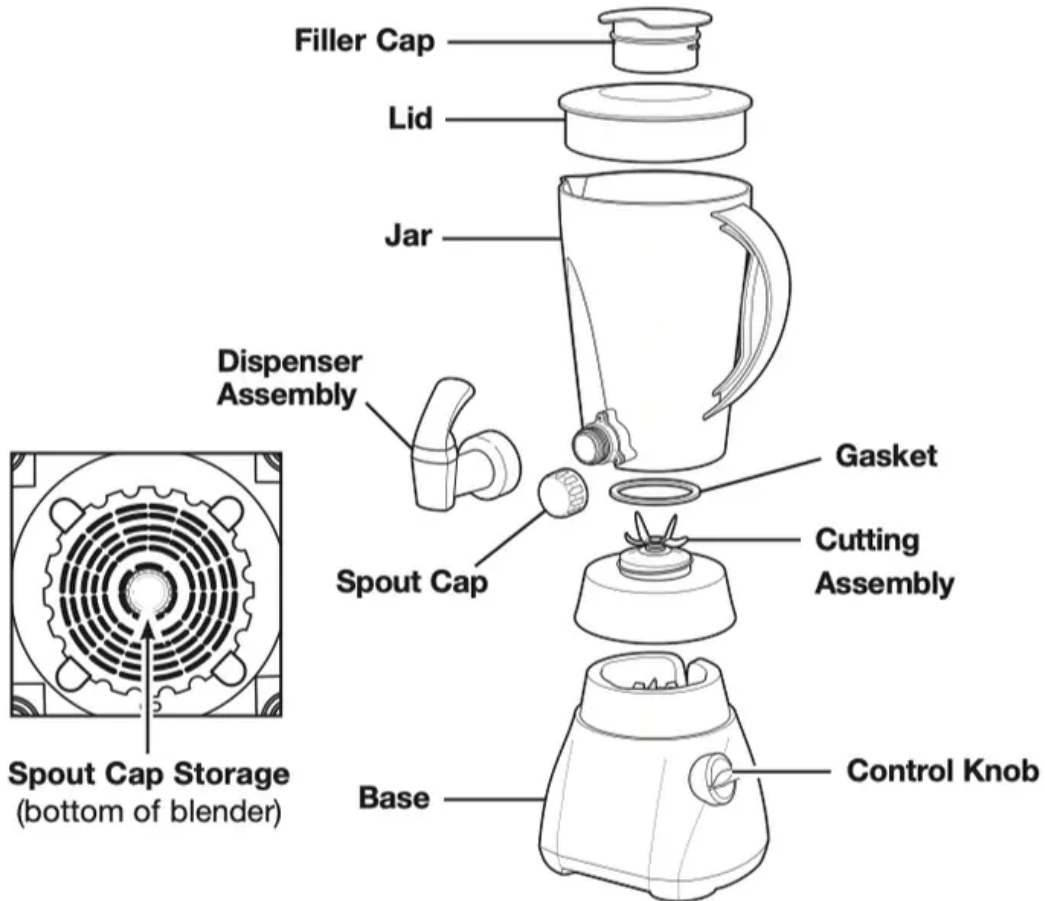
Optional Accessory

Peak power is the measure of the motor wattage during the first seconds of operation. This is when a blender requires the most power to crush ice, frozen fruit, etc. This is a better measure of what a blender motor can consume when power is needed most.

Hamilton Beach Stay or Go™ Personal Blending Jar (AC16) may be purchased separately and used with this appliance.

Parts and Features

BEFORE FIRST USE: After unpacking blender, wash everything except blender base in hot, soapy water. Dry thoroughly. Wipe blender base with a damp cloth or sponge. **DO NOT IMMERSE BASE IN WATER.** Care should be taken when handling the cutting assembly as the blades are very sharp.



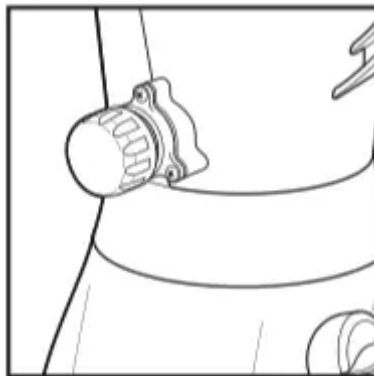
Control Knob Setting	Blender Speed
Dispense	1
Smoothie	2
Milkshake	3
Icy Drink	4

How to Assemble

IMPORTANT: Your blender jar and cutting assembly are subject to wear during normal use. Always inspect jar for nicks, chips, or cracks. Always inspect cutting assembly for broken, cracked, or loose blades. If jar or cutting assembly is damaged, do not use. Call our toll-free customer service number to obtain replacement parts.

1. Make sure blender is unplugged. Place blender base on clean, dry surface.
2. Fit gasket over blades as shown in illustration on page 4. The gasket must lie flat. Set jar on top of gasket and screw on cutting assembly. Make sure the cutting assembly is firmly screwed onto the jar.
3. Set jar into place on blender base, making sure it is securely seated. If not, gently rock the jar until seated.

OPTIONAL: When dispenser is not needed, replace dispenser with spout cap. Remove dispenser by rotating counterclockwise (see “How to Clean” section). Insert spout cap on jar. Turn spout cap clockwise to tighten.



4. When spout cap is not in use, snap onto bottom of blender base for storage.

How to Operate

1. Plug cord into outlet.
2. Put ingredients in jar. Place lid with filler cap on jar.
3. Process food or beverages.

NOTE: When blending thin liquids, do not fill above the 32-ounce/ 4 cup/1000 ml mark on blender jar.

4. ALWAYS turn blender off and wait until blades have stopped rotating before removing jar.
5. To remove jar after blending is complete, lift the jar straight up. If it is not easily removed, rock gently and lift. Do not twist.

To Use the Dispenser:

To dispense thick liquids (such as milkshakes, smoothies, frozen drinks, etc.), turn the control knob to DISPENSE and pull Dispenser Lever up. Turn OFF after dispensing.

NOTE: Blender MUST be ON to dispense thick liquids and frozen drinks.

When dispensing thin liquids, it may not be necessary to turn the blender ON to dispense the liquid.

NOTE: NEVER replace jar onto unit while motor is running.

How to Clean

Quick Cleaning

Quick cleaning should only be used to rinse the blender between batches of processing the same food. When the processing of a single type of food is finished, the blender should be disassembled and thoroughly cleaned as instructed below.

To quick clean, pour 2 cups (500 ml) warm water in jar and add 1 drop liquid dishwashing detergent. Run the blender on DISPENSE for 10 seconds. Flush soapy water through dispenser until cleaned. Discard soapy water. Rinse blender jar with clean water. Flush clean water through dispenser until cleaned.

This function is not a substitute for regular cleaning as instructed below. This function should never be used when blending any mixture containing eggs, milk, or any other dairy products.

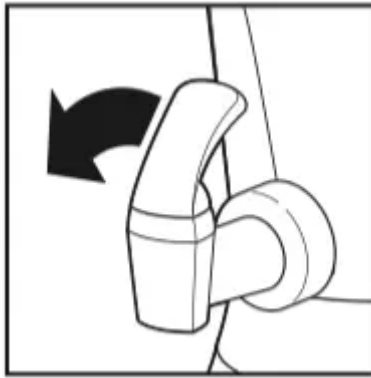
Regular Cleaning

WARNING Electrical Shock Hazard.

Disconnect power before cleaning.

Do not immerse cord, plug or base in any liquid.

1. Unplug blender from electrical outlet.
2. Wipe blender base and cord with a damp cloth or sponge. To remove stubborn spots, use a mild, nonabrasive cleanser.
3. To clean jar, unscrew cutting assembly from jar.
4. Carefully remove gasket from cutting assembly.
5. Remove dispenser assembly from jar by turning counterclockwise four revolutions.



NOTE: DO NOT remove seal rings from dispenser adapter.

6. Carefully wash cutting assembly, gasket, jar, and lid in hot, soapy water. Rinse and dry thoroughly. Do not soak. Do not wash cutting assembly or gasket in a dishwasher.

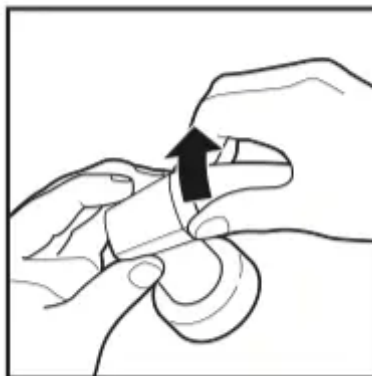
NOTE: All parts except the cutting assembly and gasket may be washed in the dishwasher (on the top rack only). Some part distortion may occur if your household dishwasher temperature is higher than normal or if the parts are placed too close to the heating element.

7. Reassemble cutting assembly and gasket onto jar, and replace jar onto blender base. Ensure dispenser assembly or spout cap are fully rotated clockwise to lock into position (reverse of Step 5 above).

8. Store blender with lid or filler cap removed to prevent container odor.

Optional Cleaning

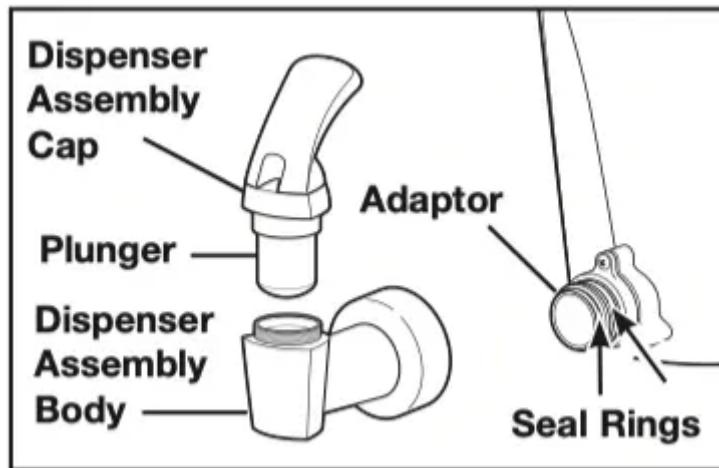
1. Remove dispenser assembly cap by rotating counterclockwise.



2. Wash dispenser and parts in hot, soapy water. Rinse and dry thoroughly. Do not soak.

NOTE: Do not remove seal rings from adaptor.

3. Reassemble plunger inside of dispenser body and rotate cap clockwise until tight.



Troubleshooting

PROBLEM	PROBABLE CAUSE
Blender leaks.	<ul style="list-style-type: none"> • Tighten cutting assembly on jar. • Make sure gasket is in place on cutting assembly. • Make sure gasket is not damaged. If damaged, please call our toll-free customer service number to order a replacement. • Make sure lid with filler cap is pushed down tightly on jar.
Ice not crushed.	<ul style="list-style-type: none"> • See ice crushing instructions in “Blending Specific Foods” section.
Does not blend well.	<ul style="list-style-type: none"> • Make sure enough liquid has been added. A minimum of 10 ounces (300 ml) is recommended.
Does not dispense.	<ul style="list-style-type: none"> • Make sure blender is ON.
Dispenser leaks.	<ul style="list-style-type: none"> • Make sure seal rings are in place on dispenser adaptor. • Tighten dispenser cap (located above dispenser body).
Cannot remove cutting assembly.	<ul style="list-style-type: none"> • Loosen collar by holding jar and turning cutting assembly counterclockwise.

Blending Tips

Crushing Ice

For best performance, when a recipe calls for liquid, place the liquid in blender jar followed by the ice cubes. Ensure ice cubes are separated. When only crushed ice is desired, add 1 cup (250 ml) of ice cubes to jar. Place lid on blender jar then Pulse on any of the 5 pulse speeds. Allow blades to come to a complete stop between pulses. Continue until ice is crushed to desired consistency. For best results always crush ice immediately after removing from freezer.

General

To add foods when blender is operating, remove filler cap from container lid and add ingredients through the opening. Do not store food or liquids in the blender jar.

Warning

This content is compiled from multiple sources and is provided for reference purposes only. It may not be complete or fully applicable to all situations. If you are unable to resolve your issue, please contact the product manufacturer or an authorized service provider for official support.