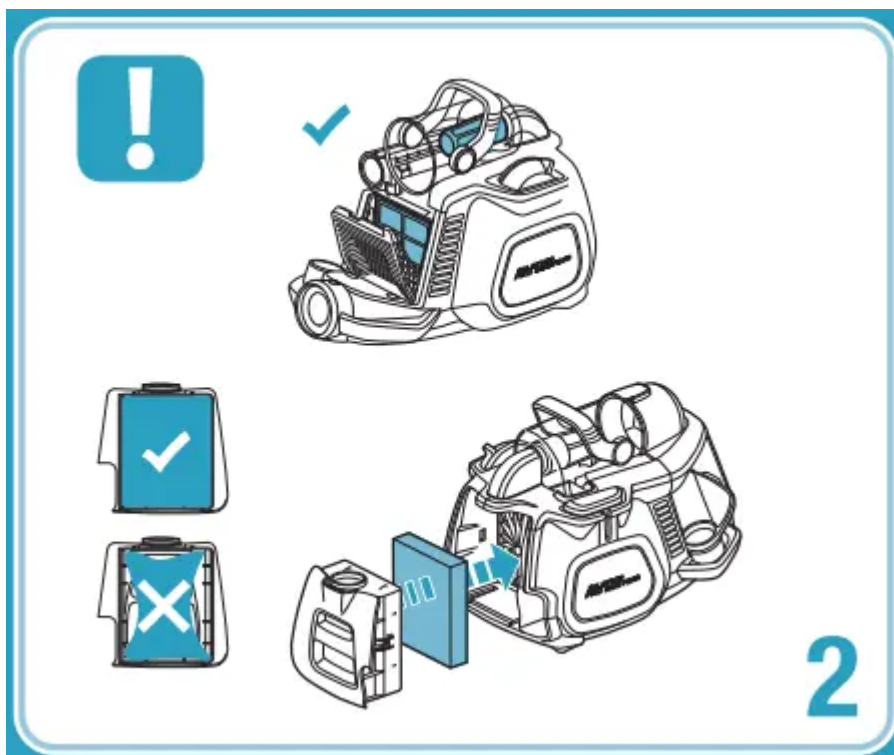
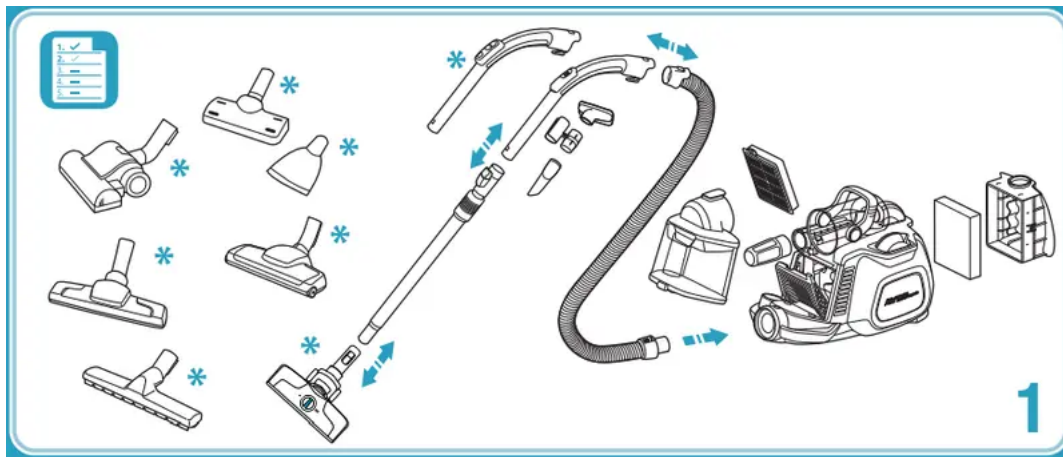
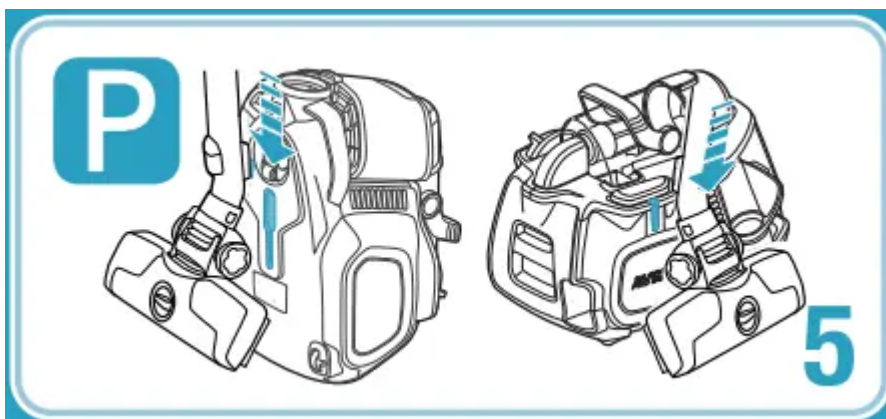
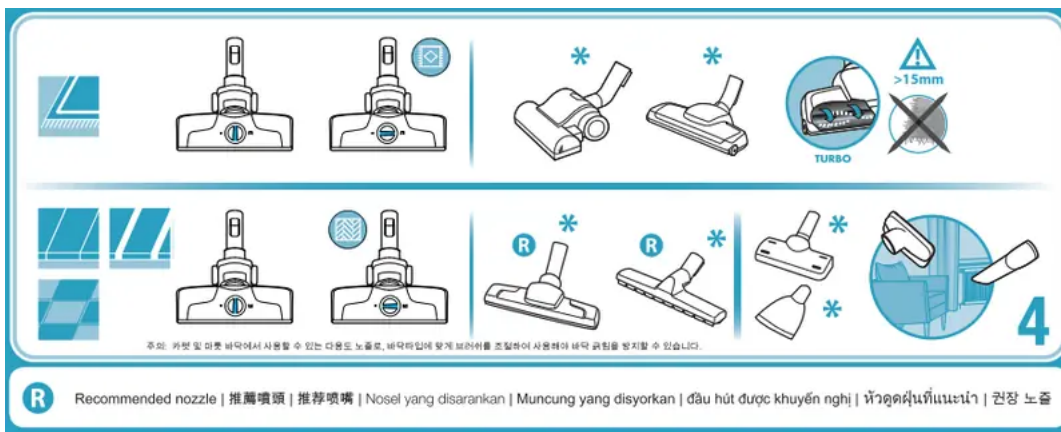
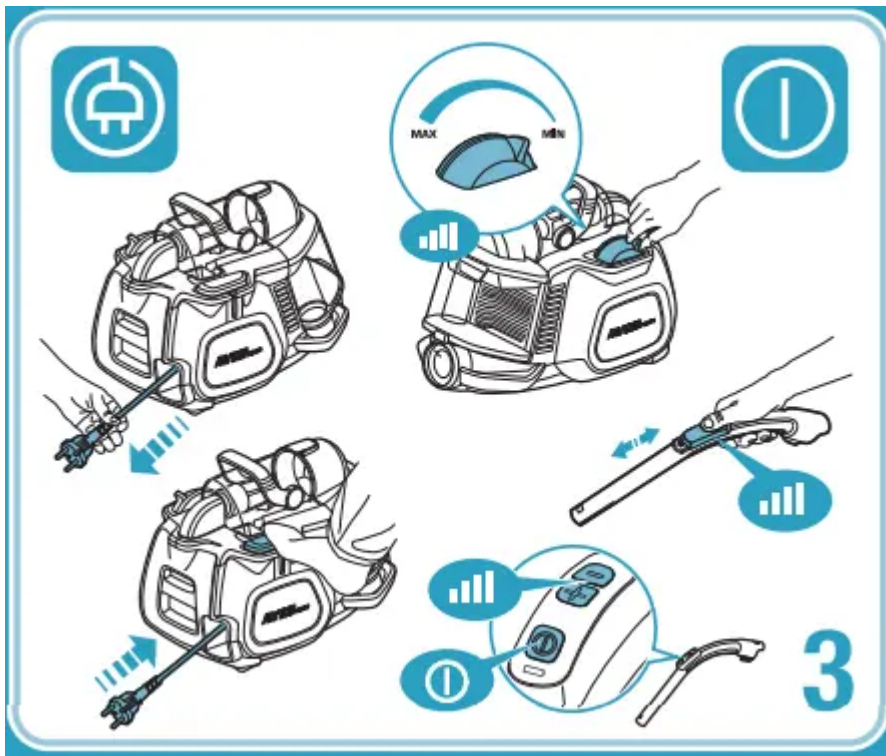
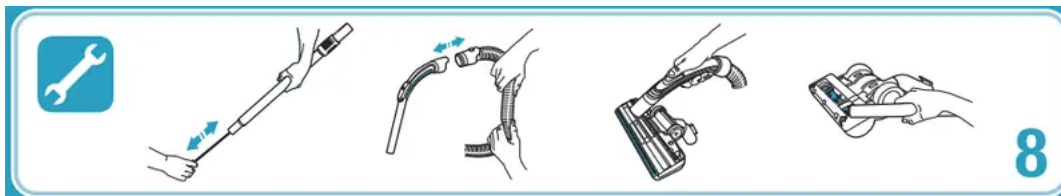
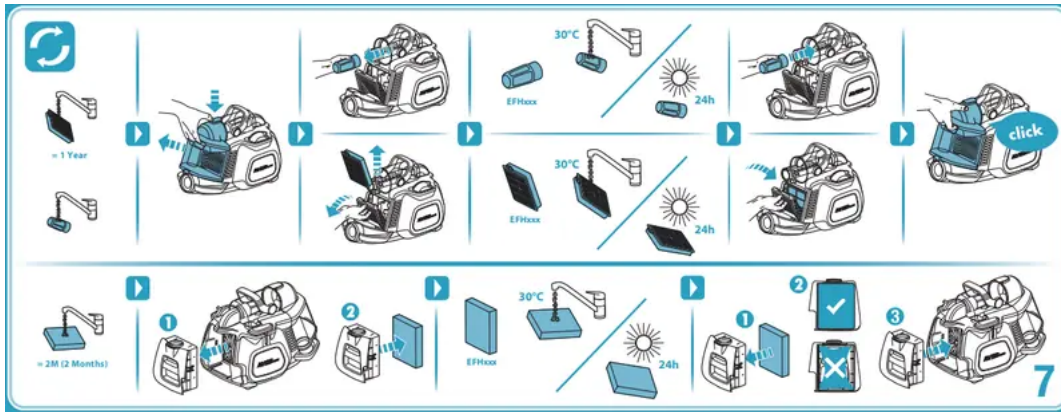
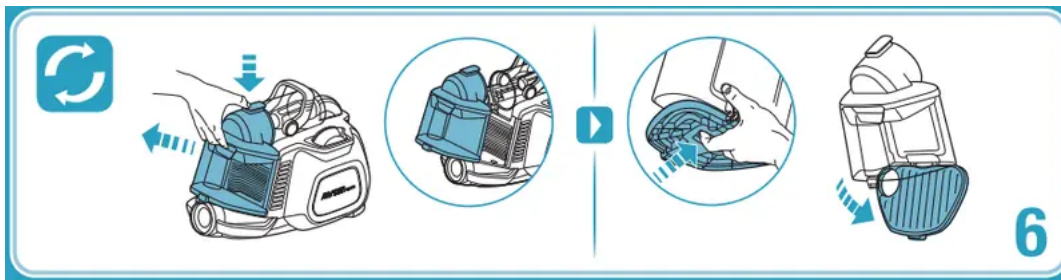


# User manual Vacuum Cleaner







## Safety precautions

Thank you for choosing an Electrolux Vacuum Cleaner.

Read all instructions and use the appliance only for its intended purpose. This vacuum cleaner is for household use only.

This appliance is not intended for use by persons (including children) with reduced physical, sensory or mental capabilities, or lack of experience and knowledge, unless they have been given supervision or instruction concerning use of the appliance by a person responsible for their safety. The vacuum cleaner features double insulation and does not need to be earthed. Children should be supervised to ensure that they do not play with the appliance.

## Never vacuum:

In wet areas.

- Close to flammable gases, combustible substances, etc.
- Without a cartridge filter (this may damage the cleaner) and without the dust container. A safety device is fitted which prevents the cover to close without the filter. Do not attempt to force to close the cover.

- Sharp objects.

Fluids (this can cause serious damage to the machine).

Hot or cold cinders. lit cigarette butts. etc.

Fine dust including powder detergents. dust from plaster. concrete. or ash for example. The above can cause serious damage to the motor — damage which is not covered by the warranty. Products in aerosol may be flammable. Do not spray these products on or near the vacuum cleaner.

## Electrical cable precautions:

If the supply cord is damaged. it must be replaced by the manufacturer. its service agent or similarly qualified person in order to avoid a hazard. Damage to the cleaner cable will not be covered by the warranty.

Never pull or lift the vacuum cleaner by the cable.

Disconnect the plug from the wall socket before cleaning or maintaining the vacuum cleaner.


Regularly check that the cable is not damaged. Never use the vacuum cleaner if the cable is damaged. All service and repairs must be carried out by an authorized Service centre. Always keep the vacuum cleaner in a dry place.

## Consumer information

Electrolux declines all responsibility for all damages arising from any improper use of the appliance or in cases of tampering with the appliance. This product is designed with the environment in mind. All plastic parts are marked for recycling purposes. For details see our website:  
[www.electrolux.com](http://www.electrolux.com)

**WARNING:** On collection of proprietary carpet conditioning powder. it is recommended that the dust container is emptied and the cartridge filter is cleaned after each use. Some of the preparations contain substances which if left in the vacuum cleaner for extended periods. could cause damage. Many air fresheners. household deodorants. sprays and polishes contain highly inflammable gas propellants. because of this it is particularly important that these products are used strictly in accordance with the relevant manufacturers instructions. it is essential that none of the above products are sprayed directly into the vacuum cleaner or any of the filters. hose assembly or dust chamber.



The symbol  on the product or on its packaging indicates that this product may not be treated as household waste. Instead it shall be handed over to the applicable collection point for the recycling of electrical and electronic equipment. By ensuring this product is disposed of

correctly. you will help prevent potential negative consequences for the environment and human health. which could otherwise be caused by inappropriate waste handling of this product. For more detailed information about recycling of this product. please contact your local city office. your household waste disposal service or the shop where you purchased the product.

## **Troubleshooting**

You can perform your own troubleshooting at home based on the checklist given below.

However. if the problem persists. please consult your nearest authorized Electrolux Service Centre.

## **CONSUMER INFORMATION**

Electrolux declines all responsibility for all damages arising from any improper use of the appliance or in cases of tampering with the appliance. For more details of warranty and consumers' contacts see the Warranty Booklet in the packaging.

| PROBLEM                                | POSSIBLE CAUSES   | CORRECTIONS  |
|--|---|--|
| The vacuum cleaner does not start.     | The plug is not properly connected to the socket.         | Check the plug connection or try another socket.                       |
|  | Thermal protector activated due to the motor to cool off. | Press the ON/OFF button and wait 20 – 30 minutes for high temperature. |
| Filter indicator* lights and stays on. | Dust container is full.                                   | Empty the dust container.  |
|  | The filters are clogged.                                  | Clean or replace filters.  |
| Reduction of suction capacity.         | Suction hose is blocked.                                  | Clean the hose.  |
|  | Nozzle is blocked.  | Clean the nozzle.  |
|  | Dust container is full.                                   | Empty/replace the dust container.                                      |
|  | Filters are clogged.                                      | Clean or replace filters.  |
|  | Hose is damaged or broken.                                | Change the hose.   |
|  | Dust container is not in place.                           | Put dust container in place.   |
|  | Filter is not in place.                                   | Put dust container in place.   |
| Over heating.                          | Dust container is full.                                   | Empty/replace the dust container.                                      |
|  | Filters are clogged.                                      | Clean/replace filters.   |

\*Applies to certain models only

### Warning

This content is compiled from multiple sources and is provided for reference purposes only. It may not be complete or fully applicable to all situations. If you are unable to resolve your issue, please contact the product manufacturer or an authorized service provider for official support.