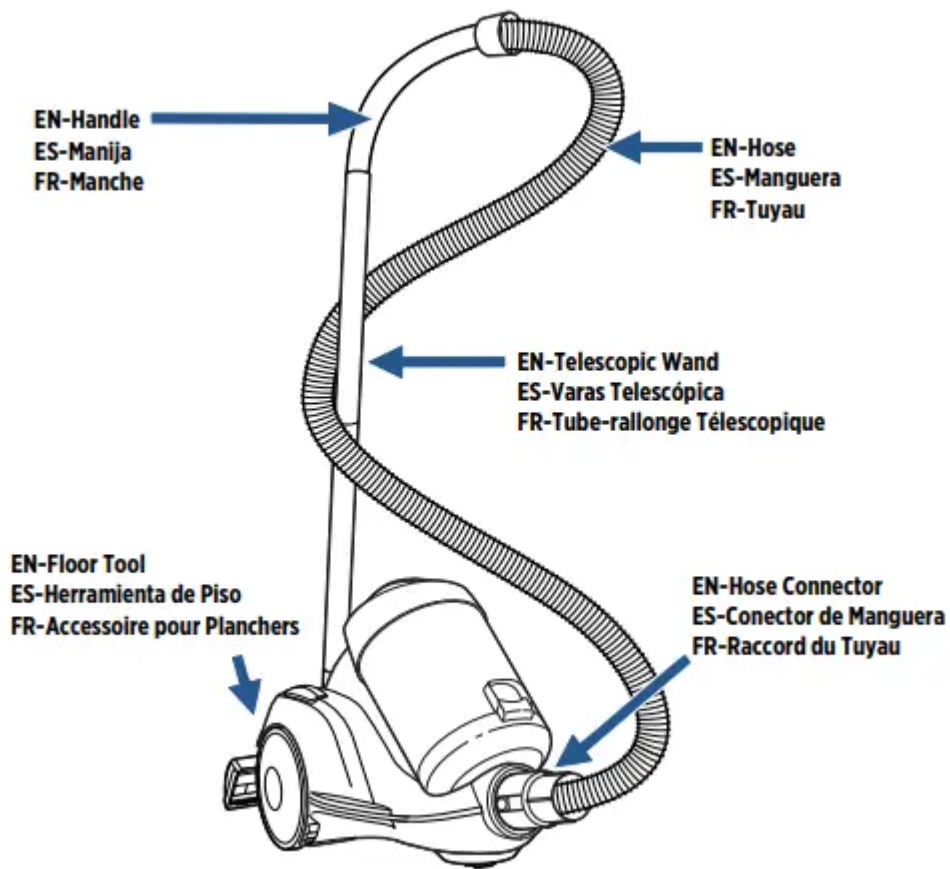
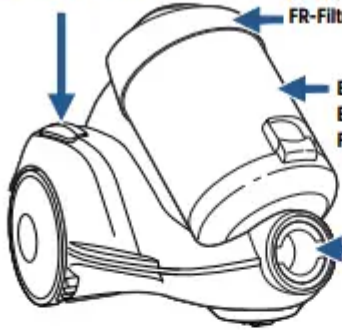


## Product Map



**EN-Cord Rewind Button**  
**ES-Botón de Rebobinado de Cable**  
**FR-Bouton de Rembobinage du Cordon**

**EN-Pre-Motor Filter (not shown)**  
**ES-Filtro Pre-Motor (no mostrado)**  
**FR-Filtre prémoteur (pas illustré)**



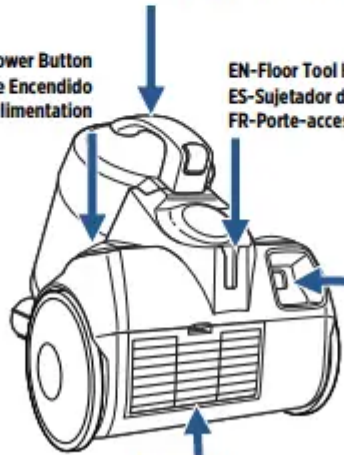
**EN-Dirt Container**  
**ES-Recipiente de Suciedad**  
**FR-Contenant à poussière**

**EN-Hose Connector**  
**ES-Conector de Manguera**  
**FR-Raccord du Tuyau**

**EN-Carry Handle**  
**ES-Manija de Transporte**  
**FR-Poignée de Transport**

**EN-Power Button**  
**ES-Botón de Encendido**  
**FR-Bouton de l'interrupteur d'alimentation**

**EN-Floor Tool Holder**  
**ES-Sujetador de Herramienta de Piso**  
**FR-Porte-accessoire pour Planchers**

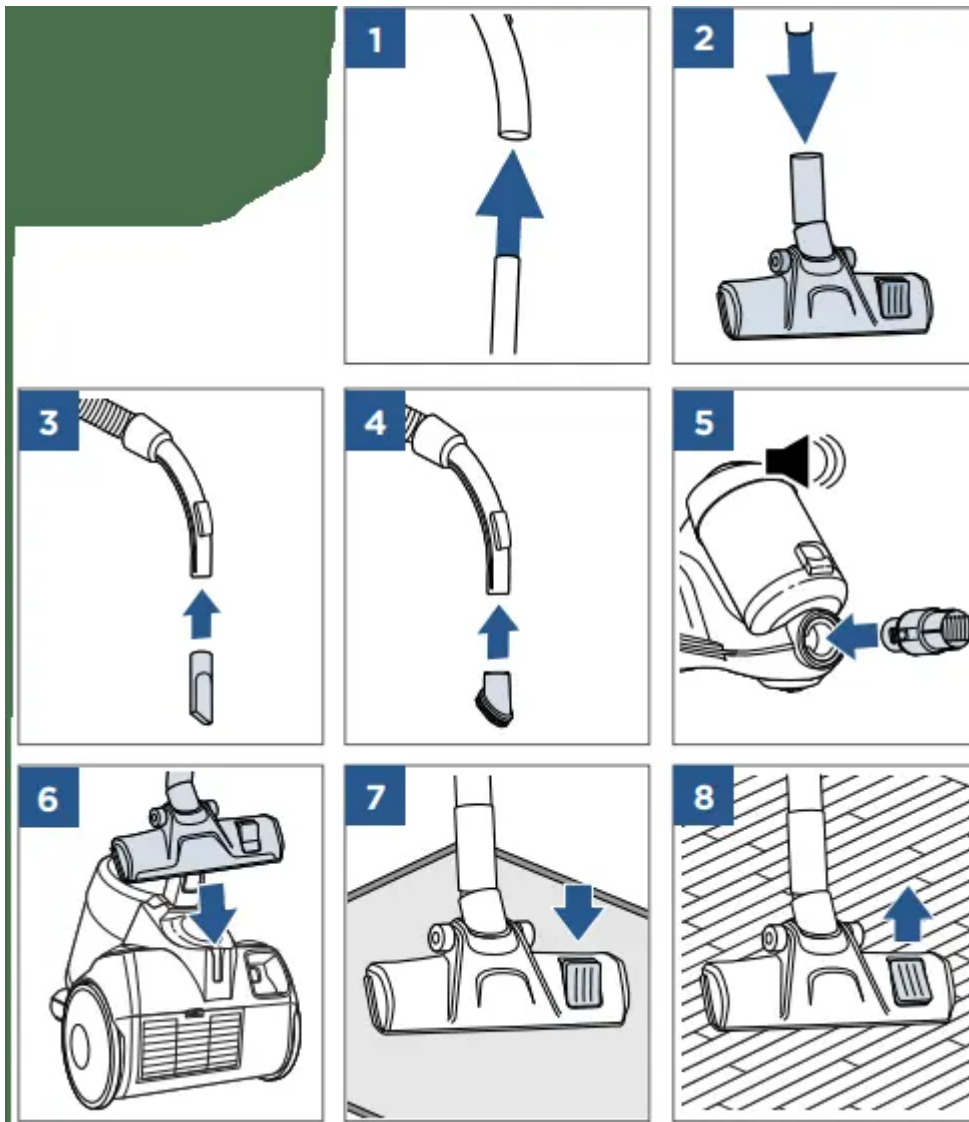


**EN-Cord**  
**ES-Cable**  
**FR-Cordon d'alimentation**

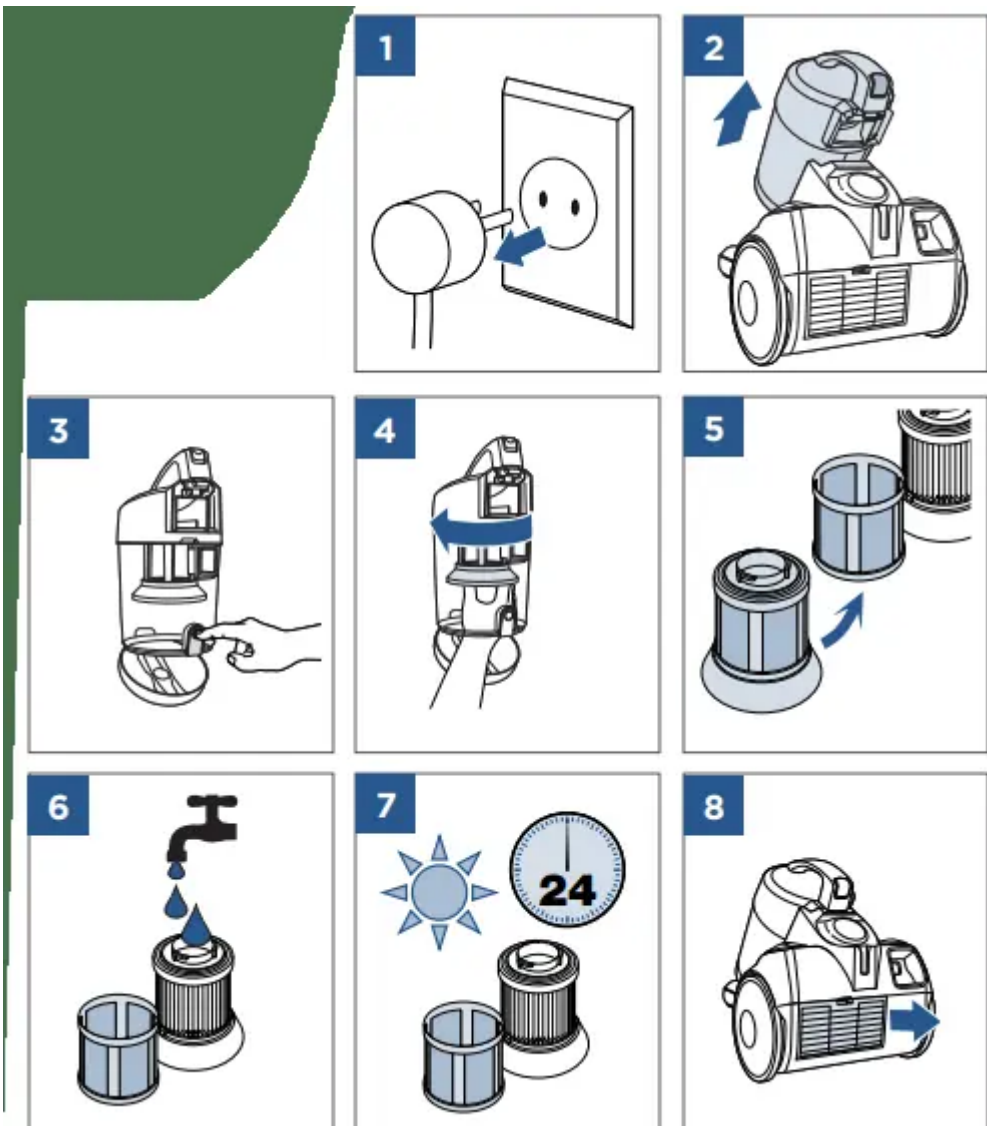
**EN-Post-Motor Filter**  
**ES-Filtro Post-Motor**  
**FR-Filtre Postmoteur**

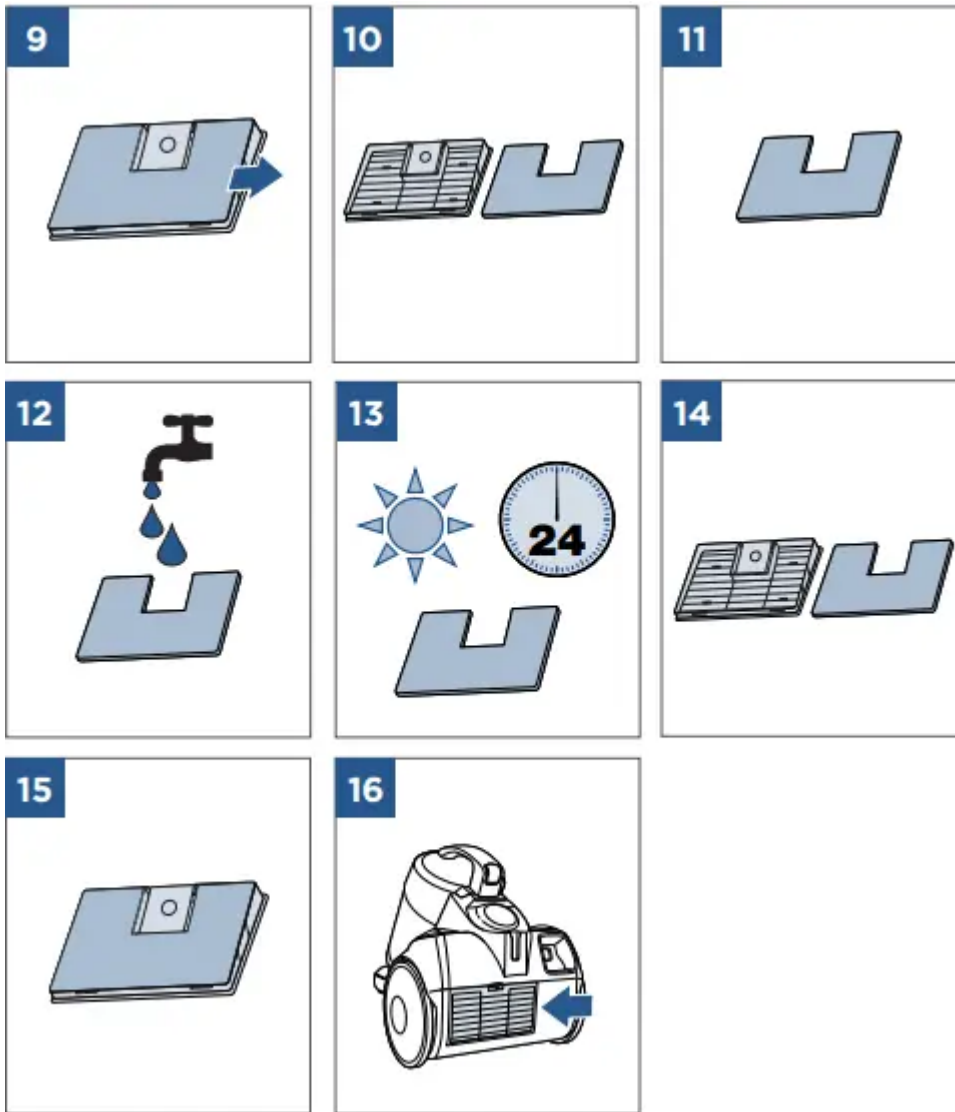


# Assembly



# Maintenance





## Troubleshooting

### Vacuum won't pick up dirt.

Filters are dirty.

- Les filtres sont encrassés.
  - Remove and rinse pre-motor and post-motor filters. Allow enough time for them to dry properly before reinserting.
- The Main Hose is not connected.
  - Locate the Main Hose and reconnect by pushing the hose connection to secure the latch.
- There is a crack or hole in the Main Hose.
  - If there is a crack or hole, order a new Main Hose from the BISSELL website.

- There is a clog in the vacuum.
  - Remove debris and any other entanglements that may be restricting its suction.
- The Dirt Container is not seated properly.
  - Press the Release Button to remove the Dirt Container. To reseal properly insert the bottom of the Dirt Container first, and then press until you hear the top click into place.

**Dirt is escaping from the vacuum.**

- The Dirt Container is full.
  - Empty the Dirt Container.
- Filters are missing.
  - Check to see if the Pre-Motor and Post-Motor filters are in place.
- The Dirt Container is not seated properly.
  - Press the Release Button and remove the Dirt Container. Insert the bottom first and pivot the Dirt Container towards the vacuum. Listen for a “click” sound, indicating that it snapped into place.

**Warranty**

If you need additional instruction regarding this warranty or have questions regarding what it may cover, please contact BISSELL Consumer Care by E-mail or telephone as described below.

**Limited One-Year Warranty**

Subject to the \*EXCEPTIONS AND EXCLUSIONS identified below, upon receipt of the product BISSELL will repair or replace with new or remanufactured components or products), at BISSELL’s option, free of charge from the date of purchase by the original purchaser, for one year any defective or malfunctioning part.

See information below on "If your BISSELL product should require service".

This warranty applies to product used for personal, and not commercial or rental service. This warranty does not apply to fans or routine maintenance components such as filters, belts, or brushes. Damage or malfunction caused by negligence, abuse, neglect, unauthorized repair, or any other use not in accordance with the User’s Guide is not covered.

BISSELL IS NOT LIABLE FOR INCIDENTAL OR CONSEQUENTIAL DAMAGES OF ANY NATURE ASSOCIATED WITH THE USE OF THIS PRODUCT. BISSELL’S LIABILITY WILL NOT EXCEED THE PURCHASE PRICE OF THE PRODUCT.

**\*EXCEPTIONS AND EXCLUSIONS FROM THE TERMS OF THE LIMITED WARRANTY**



THIS WARRANTY IS EXCLUSIVE AND IN LIEU OF ANY OTHER WARRANTIES EITHER ORAL OR WRITTEN. ANY IMPLIED WARRANTIES WHICH MAY ARISE BY OPERATION OF LAW, INCLUDING THE IMPLIED WARRANTIES OF MERCHANTABILITY AND FITNESS FOR A PARTICULAR PURPOSE, ARE LIMITED TO THE ONE YEAR DURATION FROM THE DATE OF PURCHASE AS DESCRIBED ABOVE

**Warning**

This content is compiled from multiple sources and is provided for reference purposes only. It may not be complete or fully applicable to all situations. If you are unable to resolve your issue, please contact the product manufacturer or an authorized service provider for official support.

---

Document generated by [ManualsFile](#)

