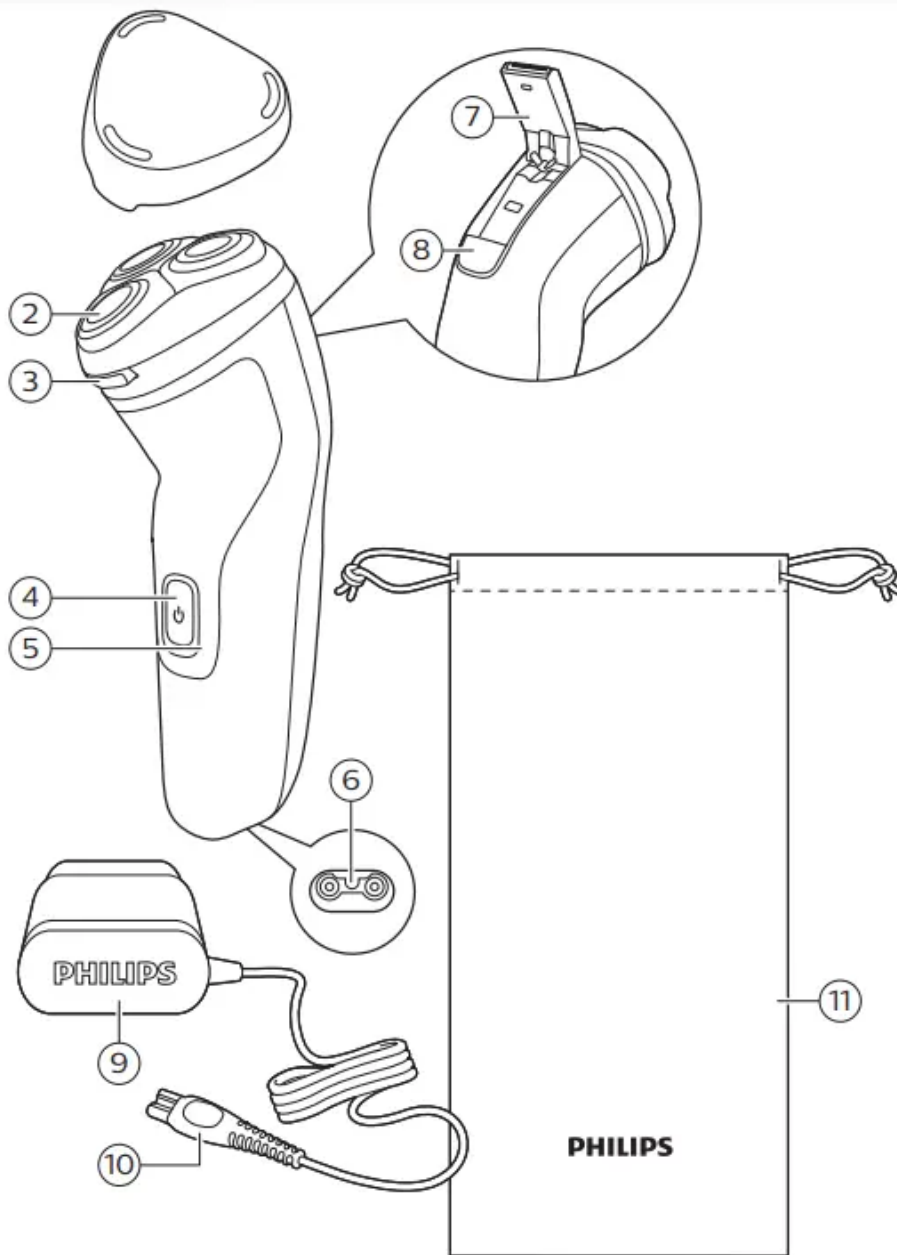


General description



1. Protective cap
2. Shaving unit
3. Shaving unit release button
4. On/off button
5. Charging light
6. Socket for small plug
7. Pop-up trimmer

8. Trimmer release slide switch
9. Power plug
10. Small plug
11. Storage pouch (S1311 only)

Introduction

Congratulations on your purchase and welcome to Philips Norelco! To fully benefit from the support that Philips Norelco offers, register your product at www.philips.com/register.

Charging

Note: You can also use the shaver while it is plugged-in and charging.

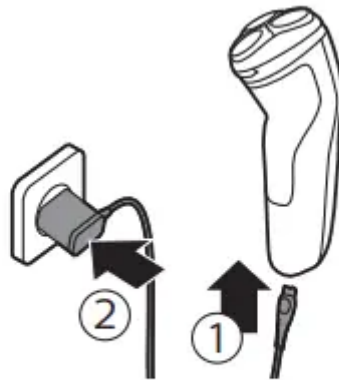
- Charging or using the product at temperatures below 40 °F (4.5 °C) or higher than 95 °F (35 °C) adversely affects the lifespan of the battery.
- If the product is subjected to a major change in temperature, pressure or humidity, let it acclimatize for 30 minutes before using.
- Do not charge the shaver in a pouch or travel case.
- The power plug transforms 100-240V AC to less than 24V DC.

Charge the shaver before you use it for the first time and when the display indicates that the battery is almost empty. When you charge the shaver for the first time or after a long period of disuse, let it charge until the charging light lights up continuously. Charging takes approx. as follows: 10 hours (S1111 only), 8 hours (S1211 only) or 1 hour (S1311 only). A fully charged shaver has a shaving time of up to: 30 minutes (S1111 only), 40 minutes (S1211 only) or 45 minutes (S1311 only).

S1311 only

Note: Before first usage charge the appliance for 3 hours without interruptions and until the battery charging indication shows that the battery is full. This is needed to make maximum use of the battery capacity. All future charges will take 1 hour.

Charging with the power cord

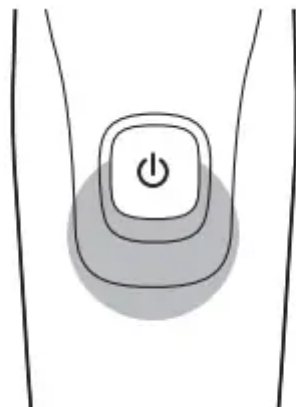


1. Make sure the product is switched off.
2. Put the small plug in the product and connect the power plug into any 100V to 240V AC outlet.
 - Use only the power cord provided.
 - The charging light on the product will indicate the charging status.
3. After charging, remove the power plug from the wall outlet and pull the small plug out of the product.

Note: An adapter plug may be necessary for cord usage in some foreign countries. Use an attachment plug adapter of the proper configuration for power outlet.

Charge indicator

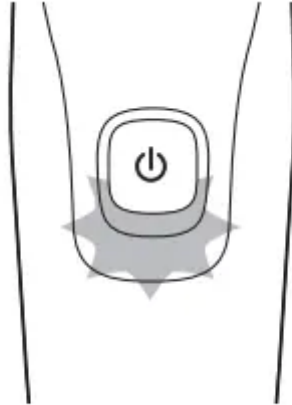
Battery fully charged



When the battery is fully charged, the charging light lights up white continuously.

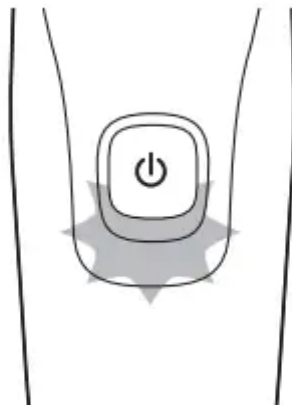
Note: After approx. 30 minutes, the charging light goes out to save energy

Battery low



- When the battery is almost empty (when there are only 5 or fewer shaving minutes left), the charging light flashes orange.
- When the battery is almost empty, the charging light starts to flash orange.
- When you switch off the product, the charging light continues to flash orange for a few seconds.

Charging

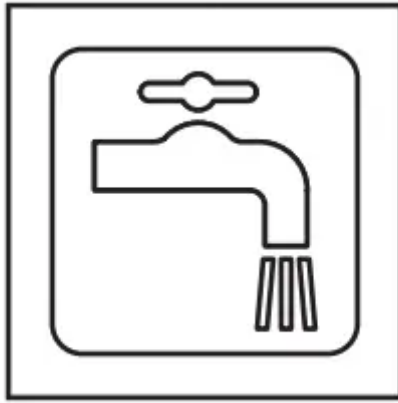


When the shaver is charging, the charging light flashes white.

Using the product

This symbol indicates that the product can be rinsed under running tap water.

- Use this product for its intended household use as described in this manual.
- For hygienic reasons, the product should only be used by one person.



21-Day adaptation process

- 21 Day Trial and Conversion Process. It is a fact that your skin and beard need time to adjust to a new grooming system.
- Use your new shaver exclusively for 3 weeks to fully enjoy the closeness of a Philips Norelco shave.
- At first you may not get as close a shave as you expect, or your face may even become slightly irritated. This is normal since your beard and skin will need time to adjust. Invest 3 weeks and you'll soon experience the full joy of your new shaver.
- Stick with it! If you alternate shaving methods during the adjustment period, it may make it more difficult to adapt to the Philips Norelco shaving system.
- If you are still not convinced after 21 days, Philips Norelco will refund you the full purchase price as long as the request is received within 45 days of purchase.

Switching the appliance on and off



1. To switch the product on or off, press the on/off button once.

Shaving

1. Turn on the shaver



2. Move the shaver in circular movements over your skin to catch hair growing in all directions.



3. Stretch your skin with your free hand so blades can lift and cut hair. Gently press shaver to skin so the floating heads can follow the contours of your face.

Note: Do not press too hard as too much pressure can pinch the skin.

4. After shaving, turn off the product.

5. Clean the shaver (see 'Cleaning and maintenance').

6. Put the protective cap on the product to protect shaver heads during storage and travel.

Note: You can also use the shaver while it is plugged-in and charging.

- For the best results on skin comfort, pretrim your beard if you have not shaved for 3 days or longer.

Trimming

Trimming with pop-up trimmer

You can use the trimmer to groom your sideburns and moustache.

1. Push the trimmer release slide downwards to open the trimmer.
2. Switch the product on.



3. Hold the trimmer perpendicular to the skin and move the product downwards, exerting gentle pressure.
4. Turn off and clean the trimmer after each use.
5. Close the trimmer ('click').



Cleaning and maintenance

Regular cleaning guarantees better shaving results.

Never clean, remove or replace the shaving unit while the shaver is switched on. Do not touch shaving heads with hard objects as this may dent or damage the precision-made slotted shaving head. Do not use abrasives, scourers or aggressive liquids such as gasoline or acetone to clean the shaver.

Cleaning the shaver

Clean the shaver after every shave for optimal shaving performance.

Always check if the water is too hot, to prevent burning your hands.

While rinsing shaving heads, water may drip out of the base of shaver. This is a normal occurrence. Internal electric parts are in a waterproof compartment so the shaver will be protected against water damage.

1. Turn off the shaver, unplug from outlet and remove power cord from the product.
2. Press the unit release button to open the shaving unit.
3. Rinse the shaving unit and hair chamber with lukewarm water.

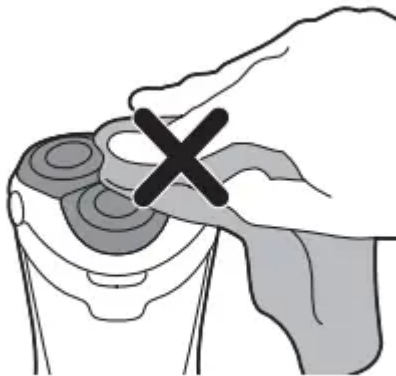


4. Rinse the outside of the shaving unit with lukewarm water.

- **Never dry the shaving unit with a towel or tissue, as this may damage the shaving heads.**



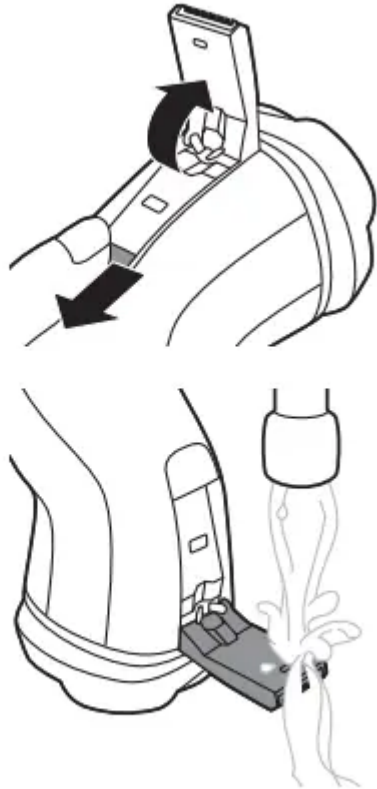
5. Carefully shake off excess water and let the shaver air dry.
6. Close the shaving unit.



Cleaning the pop-up trimmer

Never dry with a towel or tissue, as this may damage the trimming teeth. Clean the pop-up trimmer after each use.

1. Turn off the shaver.
2. Push the trimmer release slide button down to open the pop-up trimmer.



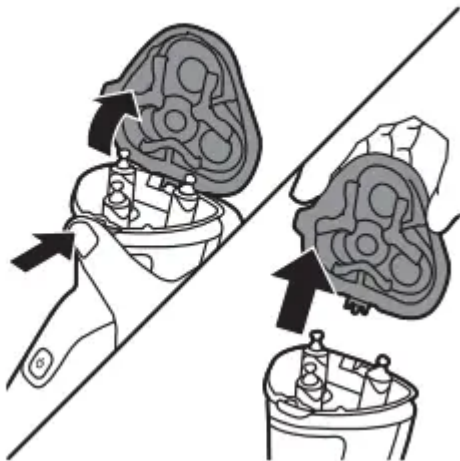
3. Turn on the shaver and rinse the pop-up trimmer under warm water.
4. Turn the shaver off after cleaning.
5. Carefully shake off excess water and let the pop-up trimmer air dry.
6. Close the pop-up trimmer ('click').
7. For optimal performance, lubricate the teeth of the pop-up trimmer with a drop of mineral oil every six months (oil not included).

Replacement

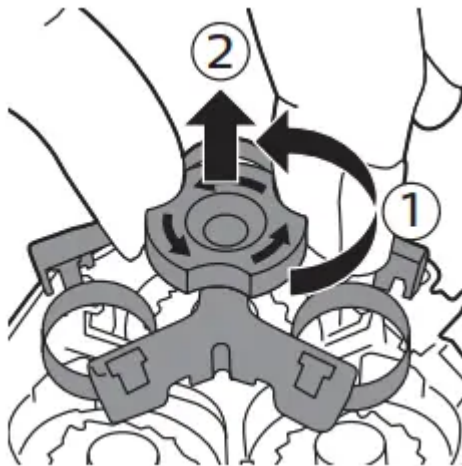
Replacing the shaving heads

For maximum shaving performance, replace the shaving heads once a year. Replace damaged shaving heads immediately. Always replace the shaving heads with original Philips Norelco shaving heads (see 'Accessories').

1. Turn off the shaver.
2. Press the shaving unit release button to open the shaving unit. Pull the shaving unit off the shaver.

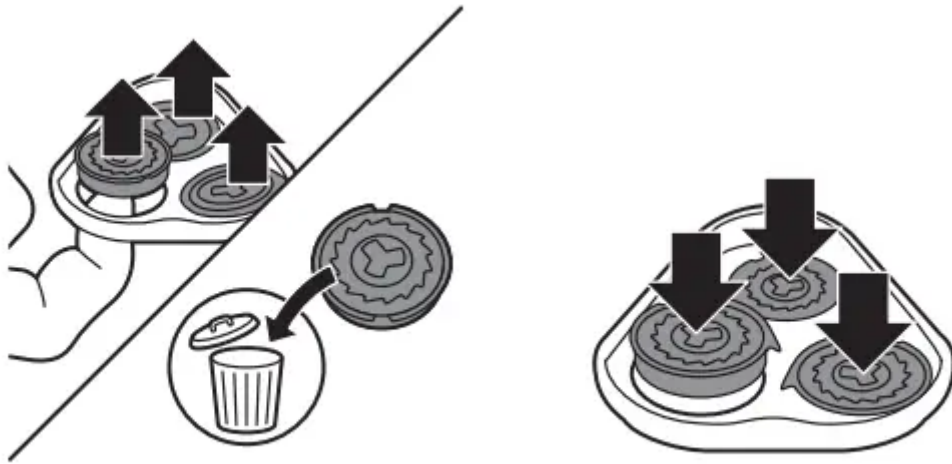


3. Turn the lock counterclockwise (1) and remove the retaining frame (2). Place it aside in a safe place.



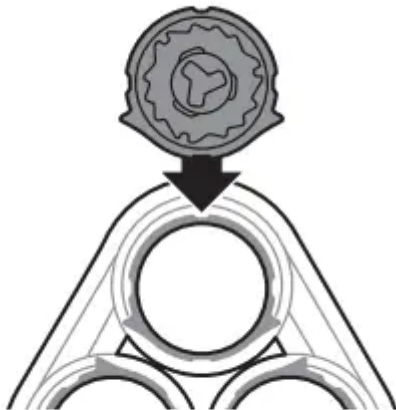
4. Remove the shaving heads from the shaving unit.

- Discard the used shaving heads immediately to avoid mixing them with the new shaving heads.

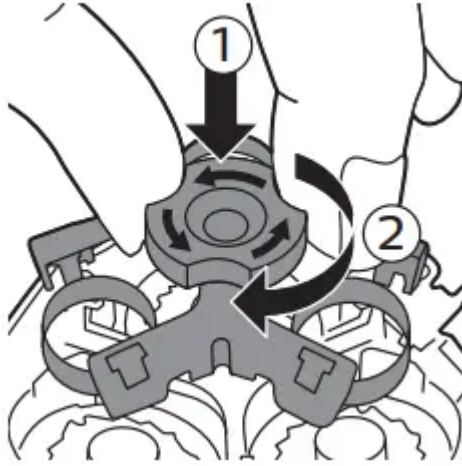


5. Place new shaving heads in the shaving unit.

Note: Make sure that the shaving heads with the projections fit exactly onto the hooks of the shaving head holder when placing them. The shaving heads supplied with the shaver either have notches or projections. Both shaving systems are the same.

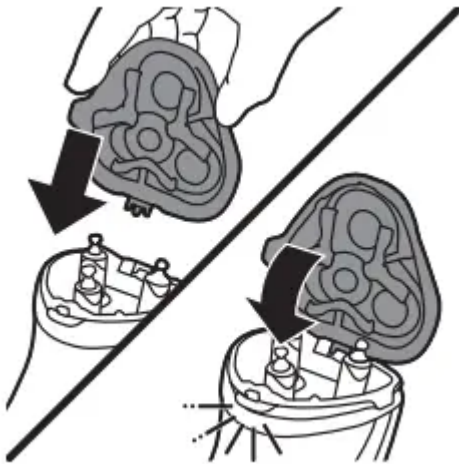


6. Put the retaining frame back into the shaving unit (1) and turn the lock clockwise (2).

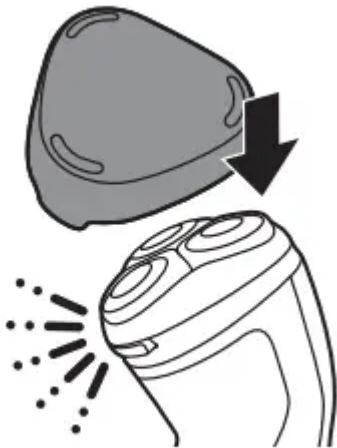


7. Insert the hinge of the shaving unit into the slot in the top of the shaver. Then close the shaving unit.

- **Note:** If the shaving unit does not close smoothly, check if you have inserted the shaving heads properly and if the retaining frame is locked.
- This product has no other user-serviceable parts. For assistance call 1-800-243-3050.



Storage



Put the protective cap on the shaver to prevent damage. **Note:** Always let the shaver dry completely before storing

- Be sure the product is turned off. Remove cord from outlet and the product before storing it in a safe, dry location where it will not be crushed, banged, or subject to damage.
- Do not wrap cord around the product when storing.
- Store cord and other accessories in a safe location where these will not be cut or damaged.
- Do not place or store the product where it can fall or be pulled into a tub or sink, water or other liquid while plugged in.

Storage in pouch (S1311 only)

- Store the product in the pouch supplied.
- Make sure the product is dry before you store it in the pouch.

Warning

This content is compiled from multiple sources and is provided for reference purposes only. It may not be complete or fully applicable to all situations. If you are unable to resolve your issue, please contact the product manufacturer or an authorized service provider for official support.