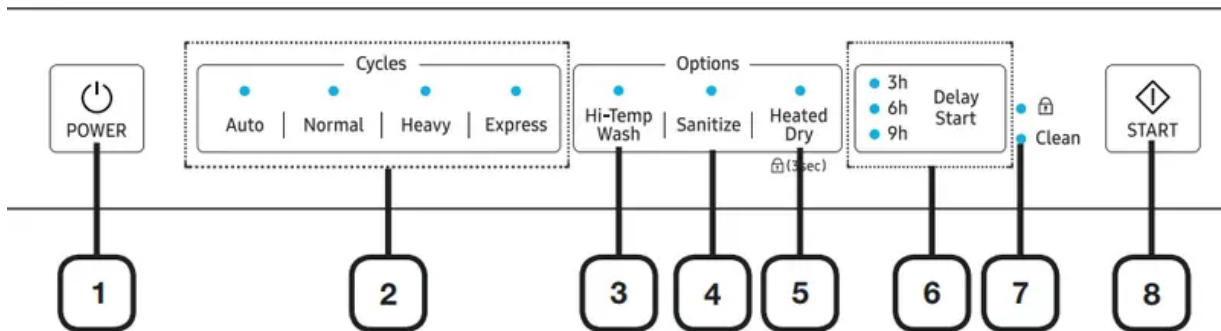


# SETTING UP YOUR DISHWASHER

## CONTROL PANEL



### 1. Power

When you press the Power button, the entire display turns on and off, and then the light of the most recently finished cycle lights up.

When the selected cycle is complete, the dishwasher powers off automatically.

### 2. Cycle Selector

Select the appropriate wash cycle depending on the soil level of your dishes. After you select a cycle, the Cycle On light for that cycle lights up.

### 3. Hi-Temp Wash

Raises the main wash temperature to improve cleaning for loads containing tough, baked-on food.

Hi-Temp Wash is not available for the Express 60 cycle.

### 4. Sanitize

The temperature rises to 156 °F (69 °C) in the final rinse cycle for high temperature sanitization.

If you select the Sanitize option, the “Sanitize” lamp blinks when the water temperature reaches the sanitary temperature (over 156 °F (69 °C)), and then remains illuminated until the Sanitize option ends. When you press the Power button, the “Sanitize” lamp turns off.

Sanitize is not available for the Auto and Express 60 cycles.

The Normal Cycle with the Sanitize option selected is NSF certified.

The Sanitize feature operates in accordance with NSF/ANSI Standard 184 for Residential Dishwashers. Certified residential dishwashers are not intended for licensed food establishments.

### 5. Heated Dry/ (3sec) (Control Lock)

When the “Heated Dry” function is selected, the heater will work during the drying process.

Control Lock allows you to lock the buttons on the control panel so children cannot accidentally start the dishwasher by pressing the buttons on the panel.

To lock and unlock the buttons on the control panel, hold the Heated Dry button down for three (3) seconds when power is On.

## 6. Delay Start

Delay a cycle for up to 24 hours in one-hour increments. The hour displayed indicates the time at which the wash will be started.

## 7. Clean

Indicates that the operation is over and that your dishes are clean.

## 8. Start

To start a cycle, press the Start button before closing the door. To cancel the cycle, press and hold the Start button for 3 seconds or press the Power button to power off the dishwasher.

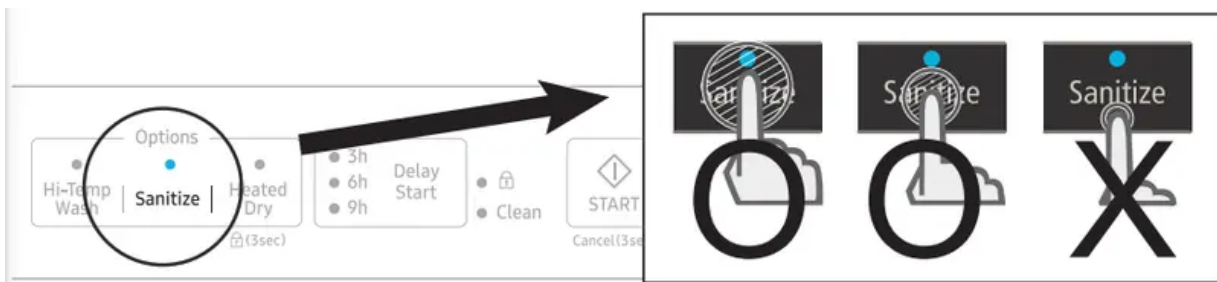
You can select options (Hi-Temp Wash , Sanitize,Heated Dry) before starting a cycle. If you change the cycle after selecting an option, the original cycle is reset.

To prevent the touchpad from losing response sensitivity, follow these instructions:

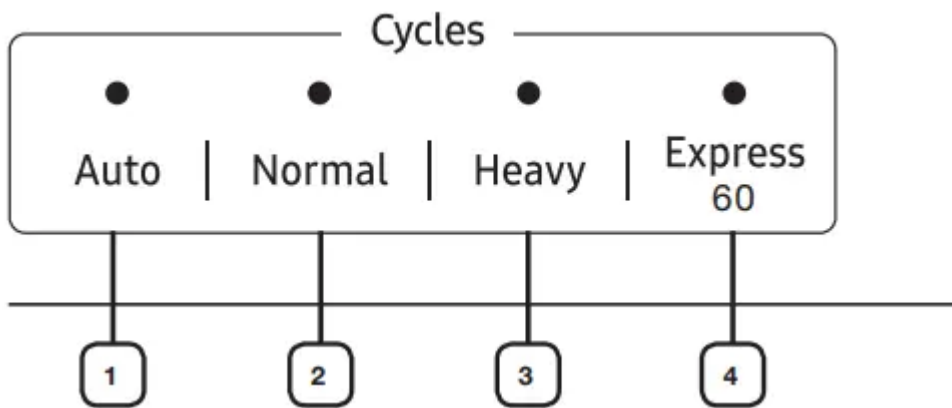
- Touch the center of each keypad using one finger. Do not push.
- Clean the touch control's surface regularly with a soft, damp cloth.
- Be careful not to touch more than one touch key pad at a time, except as directed.

When you pause a cycle by opening the door, press the Start button before closing the door to continue the cycle.

Push door firmly closed within 3 seconds of pressing Start button. If the door is not closed within 3 seconds, the cycle will not start.



## CYCLE SELECTOR



### 1. Auto

This cycle detects the level of soil and automatically initiates the optimal cycle after a few minutes of operation.

### 2. Normal

Use this cycle for normally soiled dinner dishes.

### 3. Heavy

Use this cycle for heavily soiled dishes and dishes with heavy soil.

### 4. Express 60

Use this cycle for lightly soiled dishes.

## USING YOUR DISHWASHER

### BASIC GUIDELINES

#### 1. Open the door and load your dishes

- Place dishes into the upper and lower racks, unless you have selected Lower Rack.
- Remove any food remains from the dishes before placing them in the rack(s).
- After placing the dishes into the racks, rotate the nozzles by hand to check whether any of the dishes will interfere with them.
- Make sure the dishes will not prevent the detergent dispenser from opening.

#### 2. Add detergent to the dispenser

- Make sure to use only automatic dishwasher detergent and rinse aid.
- Refer to "Using detergent"

3. Press the Power button.

- When you press the Power button, the entire display turns on and off, and then the indicator of the most recently finished cycle lights up.

4. Select an appropriate cleaning cycle depending on the soil level of the dishes.

- Press the appropriate cycle button.
- When you press a cycle button, the cycle indicator lights up.

5. Press the Start button, and then close the door within 3 seconds.

- The dishwasher will start draining after a few seconds, and then start the selected cycle.
- Make sure to close the door firmly. If the door is not closed properly, the selected cycle will not start automatically.

6. When the wash cycle is completed.

- The light illuminates and the dishwasher sounds a chime.
- The dishwasher powers off automatically.

#### **CAUTION:**

- If you want to load more dishes or pause the dishwasher while it is already running, make sure to open the door slowly and carefully as there is a possibility of injury from the hot steam inside the dishwasher.
- If the door is opened while the dishwasher is running, a safety mechanism is activated and stops the cycle.
- To resume operation, press the Start button, and then close the door within 3 seconds.
- Adding dishes several minutes after the dishwasher starts operating may affect its performance.
- If you open the door while the dishwasher is running at high temperature, it will drain the hot water automatically to protect you from scalding.

**NOTE:** You should use rinse aids for better drying performance. You can further improve drying performance by also selecting the Sanitize option.

#### **Touch controls**

Touch controls allow you to operate the dishwasher easily. They:

- Are convenient to operate, requiring only a soft touch.
- Have a simple and stylish design.
- Are easy to clean.

If you have children or you want to clean the Control Interface, we recommend activating the Control Lock feature to lock the control buttons.

- Children will not be able to accidentally start the dishwasher by touching the controls with this option selected.
- If a cycle is running, the buttons will not respond. (except the Power button)
- If dishwasher is off, only the Power button responds.

Do not touch the VENT ELEMENT during or immediately after use

### **Delay start**

When you select the Delay Start option, your dishwasher will:

Start draining to remove remaining water at once (pre-drain).

Your dishwasher will operate the selected cycle when the delay time expires.

**WARNING:** When using the dishwasher, try to arrange the dishes properly as described

- You should remove food remains such as bones, fruit seeds, etc. and any other waste such as toothpicks, paper, etc. from the dishes as these may cause damage to the dishes, create noise, or cause the dishwasher to malfunction.
- Select the appropriate cycle depending on the level of soil and the type of dishes.
- Use only the proper amount of detergent and rinsing agent.

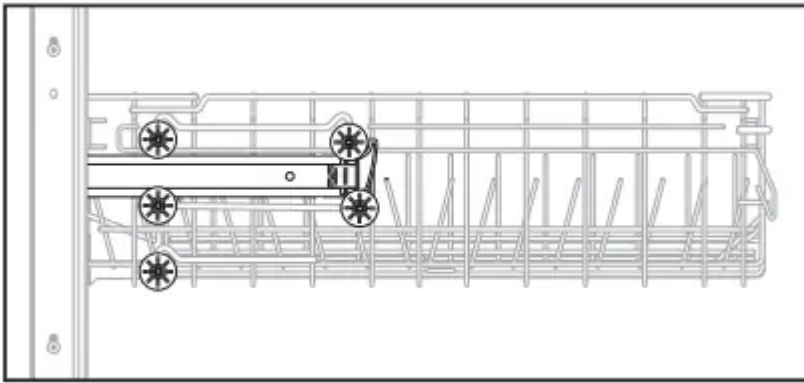
**WARNING:** Do not wash the following items in your dishwasher

- Acrylic or Aluminum items: Dishes with printed gold rim decoration may become discolored.
- Dishes treated with adhesive: Treated plastics, wood, ivory, copper, and tin may come loose.
- Plastics with a temperature tolerance less than 194 °F (90 °C): Thin plastics wash and dry poorly, and may be damaged due to elevated wash temperatures.
- Tin: Tin items should be washed by hand and dried immediately as may rust.
- Wooden utensils: Wooden items may crack.

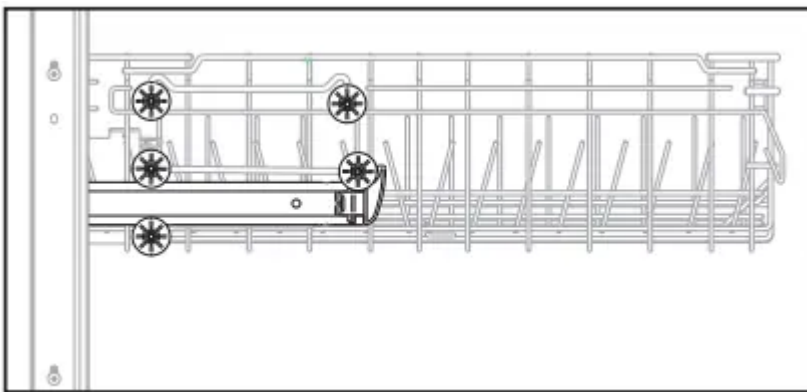
### **ADJUSTING THE HEIGHT OF THE UPPER RACK**

You can adjust the height of the upper rack in your Samsung dishwasher so that the lower rack can accommodate larger sized dishes. With the upper rack set at the highest position, the lower rack can accommodate plates up to 12 in. (30 cm) in diameter and the upper rack can accommodate plates up to 8 in. (20 cm) in diameter.

1. To lower the upper rack by 2 in. (5cm), remove the upper rack as shown below. Then reinsert the rack so that the upper four wheels on each side of the rack are above and below the guide.



2. To raise the upper rack, remove the upper rack as shown below. Then, reinsert the rack so that the lower three wheels on each side of the rack are above and below the guide rail.

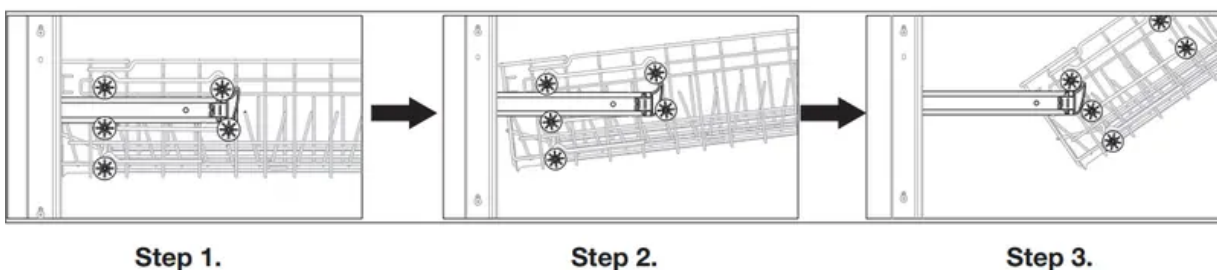


**CAUTION:** We recommend adjusting the height of the upper rack before loading dishes into the rack. If you adjust the rack after loading the dishes, you may damage the dishes.

## REMOVING THE UPPER RACK

Pull the upper rack towards the front and then remove it by lifting it up slightly and pulling it towards the front. See the illustrations below.

**CAUTION:** While the upper rack is removable, it must be installed for the dishwasher to operate properly. If you attempt to operate the dishwasher without the rack, noise will occur and the dishwasher will perform poorly



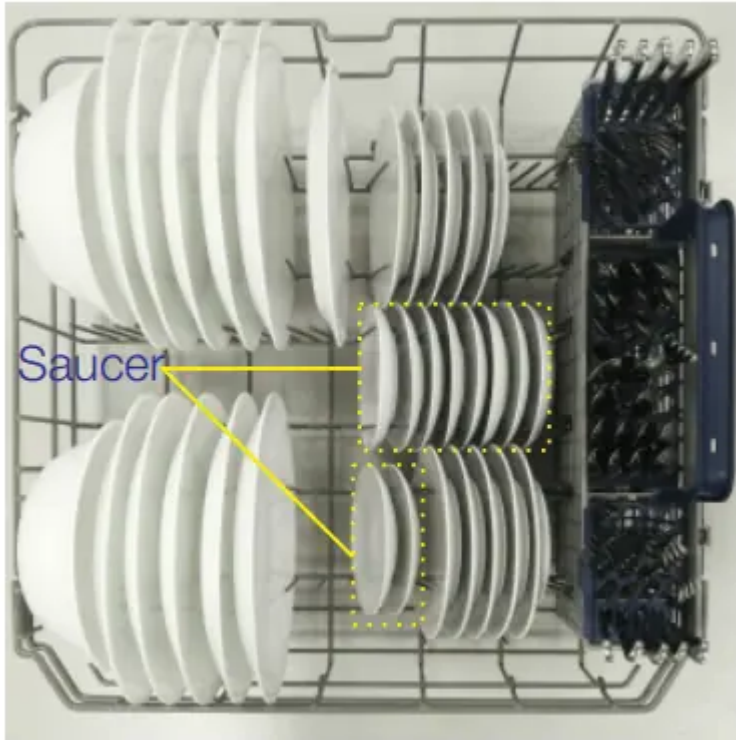
## LOADING THE LOWER RACK

The lower rack has been especially designed for dinner dishes, soup bowls, plates, pots, lids, casserole dishes, and plates.

Load large items such as pans and pots into the dishwasher so their open sides face downwards. We recommend loading cups, stemware, and small plates into the upper rack.

See the recommended loading patterns below.

10 place setting



12 place setting



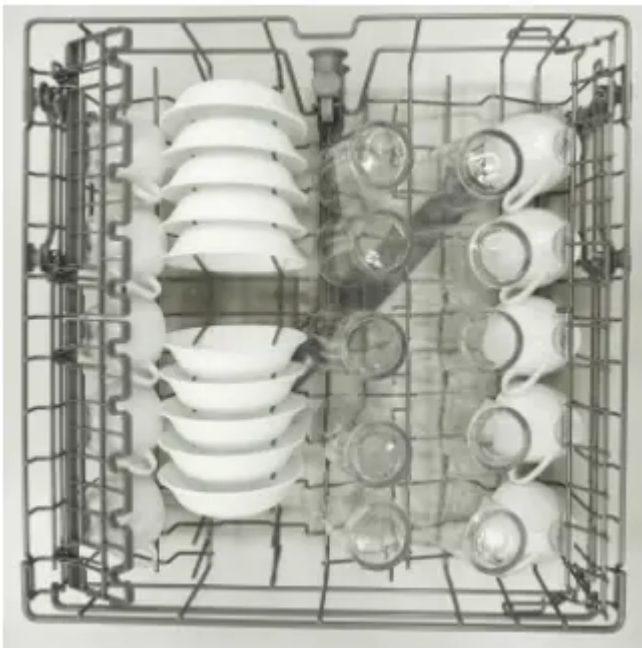
## LOADING THE UPPER RACK

The upper rack has been designed for small plates, mugs, glasses, and plastic items marked “dishwasher safe”. Load your plates into the dishwasher in two half rows, so that the front of each plate faces the back of the plate in front of it, and the open sides of the plates at the center of the dishwasher face each other. See the illustrations below.

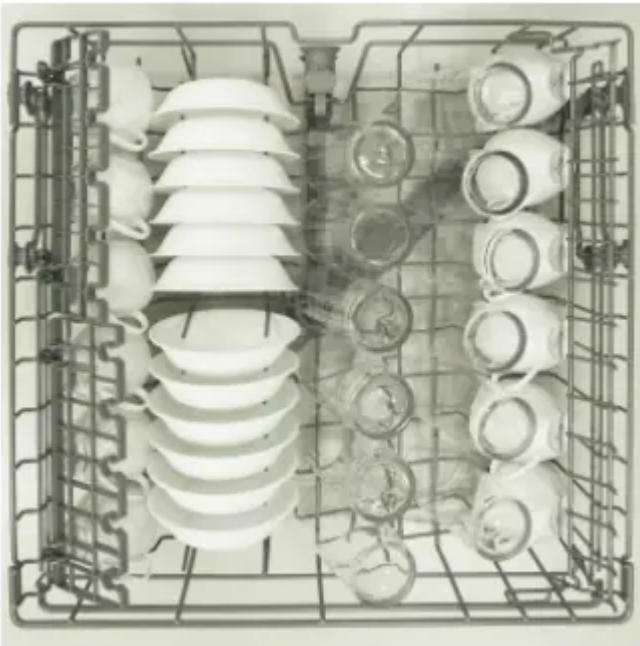
Make sure the loaded dishes do not interfere with the rotation of the nozzle which is located at the bottom of the upper rack. (Check this by rotating the nozzle by hand.)

When loading dishes, pull the upper rack out sufficiently so you can load it without striking the counter above.

10 place setting



12 place setting

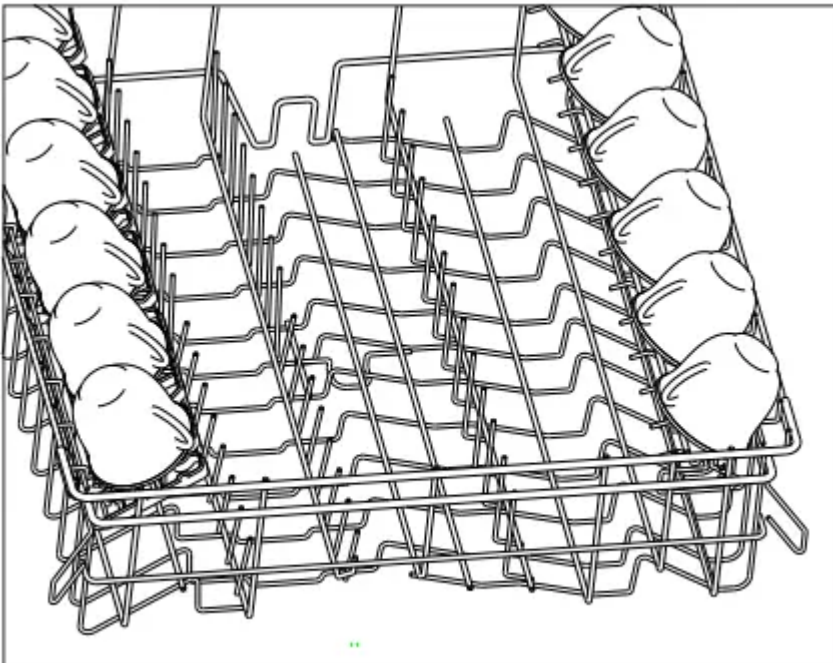


## USING THE GLASS SUPPORT

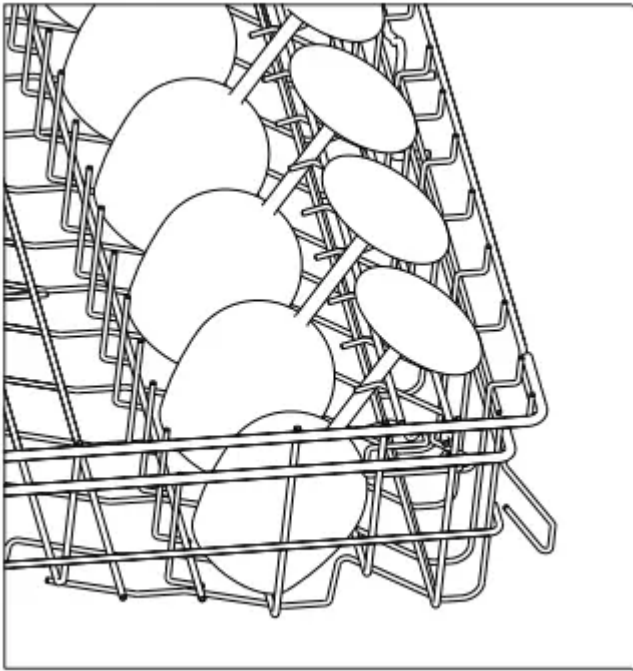
You can load cups or glasses onto the glass support. This is also very convenient for washing wine glasses. Hang your wine glasses onto the pegs of the glass support.

You can fold the glass support back when it is not being used.

cup support



glass support



### USING THE CUTLERY RACK

You can place each knife, spoon, or fork separately into the spoon stands in the basket's covers to prevent chipping and discoloration.

10 place setting



12 place setting





**CAUTION:** Use dishwasher detergent only. Regular detergent produces too much foam, which may decrease the dishwasher's performance or cause it to malfunction.

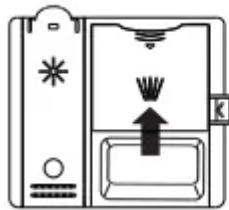
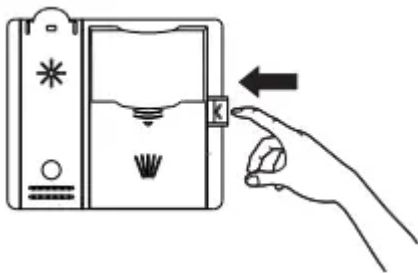
**WARNING:** Do not swallow dishwasher detergent. Avoid breathing in the fumes. Dishwasher detergent contains irritants and caustic chemicals that can induce respiratory conditions. If you have swallowed dishwasher detergent or inhaled the fumes, seek medical attention immediately.

**WARNING:** Keep dishwasher detergent out of the reach of children.

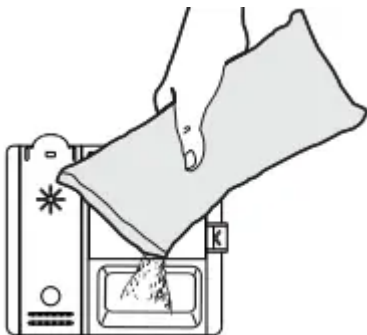
### Filling the detergent dispenser

1. Open the detergent dispenser cap by pushing the detergent dispenser release catch.

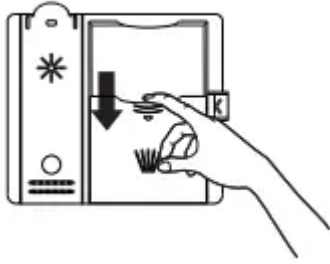
**NOTE:** The flap is always open at the end of a dishwashing cycle.



2. Add the recommended amount of detergent to the main wash detergent compartment.

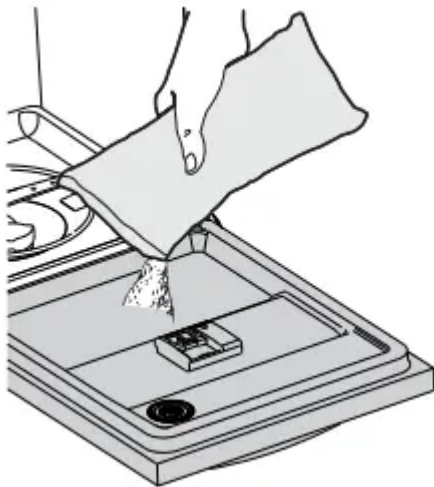


3. Close the flap by sliding it to the down and then pressing it down.



4. For better cleaning result, especially if you have very dirt items, pour a small amount (about 15 g) of detergent onto the door.

The additional detergent will activate during the pre-wash phase.



The cover opens automatically to dispense the detergent during the wash

CYCLE	AMOUNT OF DETERGENT	
	Main wash dispenser	Onto the door for pre-wash
Auto, Normal	20 g	10 g
Heavy, Express 60	30 g	15 g

**NOTE:** The numbers inside the dispenser refer to grams.

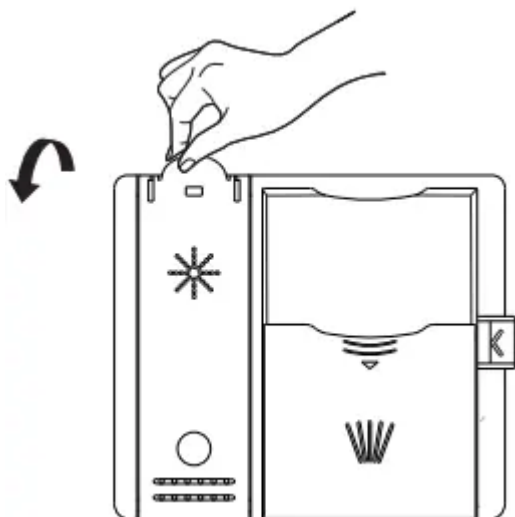
### Filling the rinse aid reservoir

Your dishwasher has been designed to use liquid rinse aid only. Using a powdered rinse aid will clog the reservoir opening and cause the dishwasher to malfunction

Rinse aid improves the drying performance of the dishwasher

**CAUTION:** Do not add regular detergent to the rinse aid reservoir.

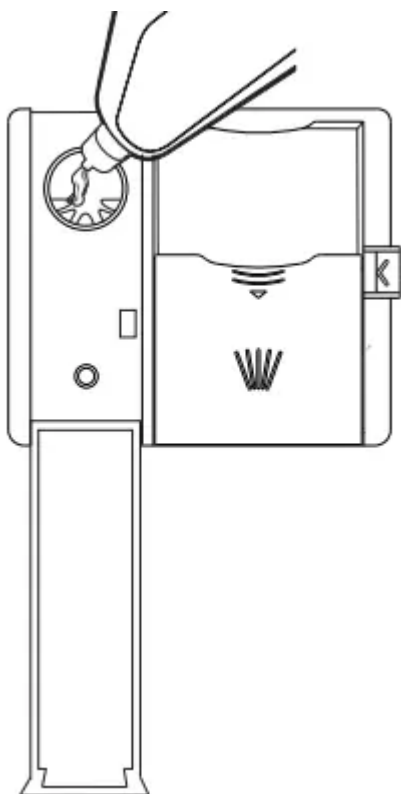
1. Open the rinse aid reservoir cap.



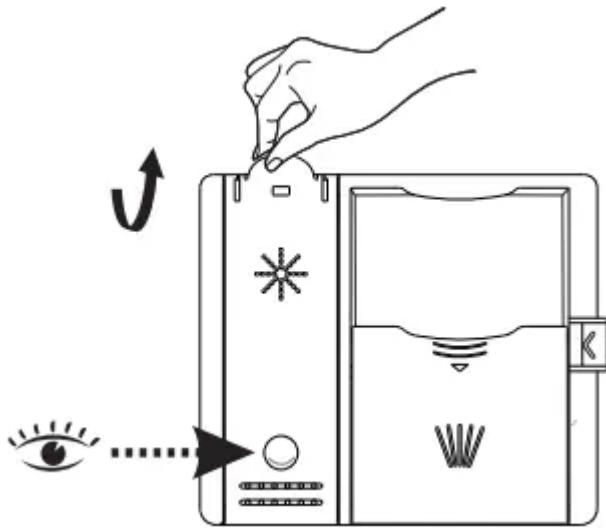
2. Fill the rinse aid reservoir with rinse aid.

**NOTE:** Use the viewing port when filling the rinse aid reservoir.

**CAUTION:** Do not fill the reservoir above the full level indicator. Excess rinse aid can over flow during the wash cycle.



3. View the amount of rinse aid in the reservoir through the clear viewing port. Stop adding when the reservoir reaches the full level.



4. Close the rinse aid reservoir cap.

## CLEANING AND MAINTAINING YOUR DISHWASHER

Keeping your dishwasher clean improves its performance, reduces unnecessary repairs, and lengthens its life.

### CLEANING THE EXTERIOR

It's best to clean spills on the outside of your dishwasher as they occur. Use a soft, damp cloth on the control panel to gently wipe away spills and dust. Do not use benzene, wax, thinner, chlorine bleach, or alcohol. These materials may discolor the inner walls and cause stains. Do not clean the dishwasher by sprinkling water over it and avoid letting water come into contact with any of the electrical parts.

**NOTE:** If your dishwasher has a stainless steel door panel, you can clean it with a stainless steel cleaner for Home Appliances or a similar product using a clean, soft cloth.

### CLEANING THE INTERIOR

Clean the interior of your dishwasher periodically to remove any dirt or food particles. Wipe the inside of the dishwasher and the inner part of the door with a wet dishcloth. We recommend filling the detergent dispenser with dish detergent, and then running the dishwasher empty periodically using either the Normal or Express 60 cycle with the sanitize option. This will keep your dishwasher clean.

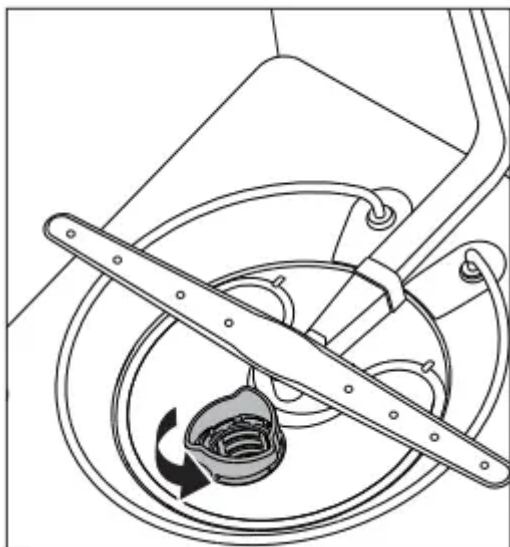
If white spots and odor are still present in your dishwasher, run the Normal cycle with the dishwasher empty and without detergent until it flushes. Then, interrupt the cycle and put an 8 ounce cup of white vinegar into the lower basket. Close the dishwasher and let the cycle finish.

**CAUTION:** Do not remove the tub front seal (the long rubber seal enclosing the opening of the dishwasher).

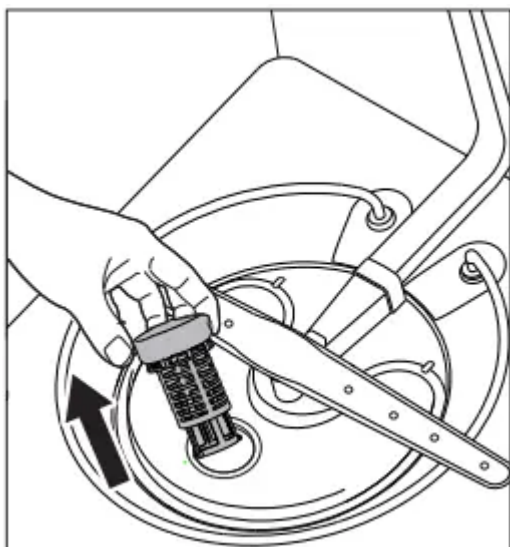
Do not touch the HEATING ELEMENT during or immediately after use.

## CLEANING THE FILTERS

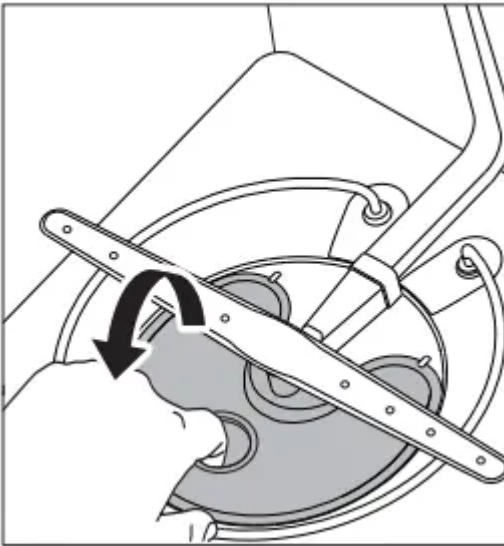
1. Turn off the dishwasher.



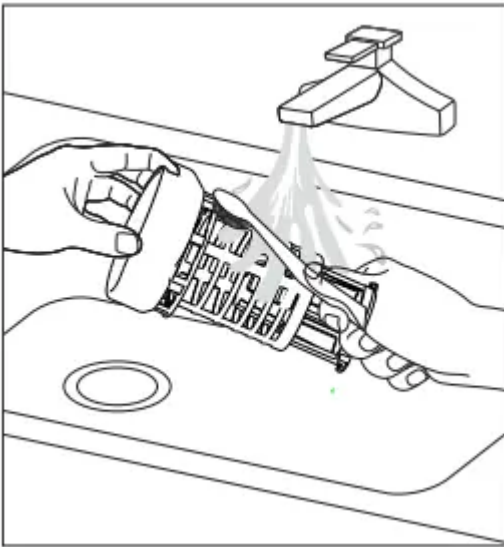
2. Rotate the filter insert counterclockwise to unfasten and then detach the filter insert.



3. Remove the fine filter (flat, rectangular).

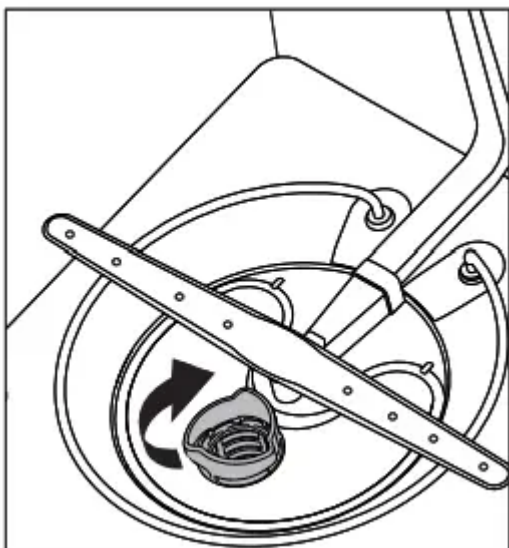


4. Remove any dirt or other remains from the filter, and then rinse under running water.



5. Reassemble the filter in the reverse order of the disassembly, re-insert the filter insert, and then rotate clockwise as shown until close .

**CAUTION:** If the filter insert is not closed properly, its performance will be decreased.

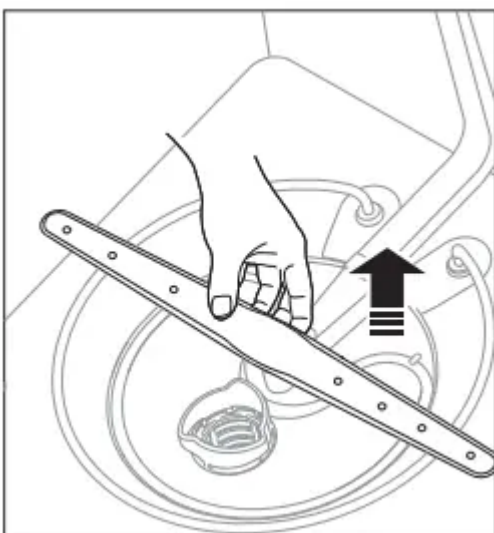


## CLEANING THE NOZZLES

If your dishwasher does not seem to be cleaning adequately or the nozzles seem clogged, you can clean each of the nozzles. When removing the nozzles, take care as they may break.

### Lower nozzle

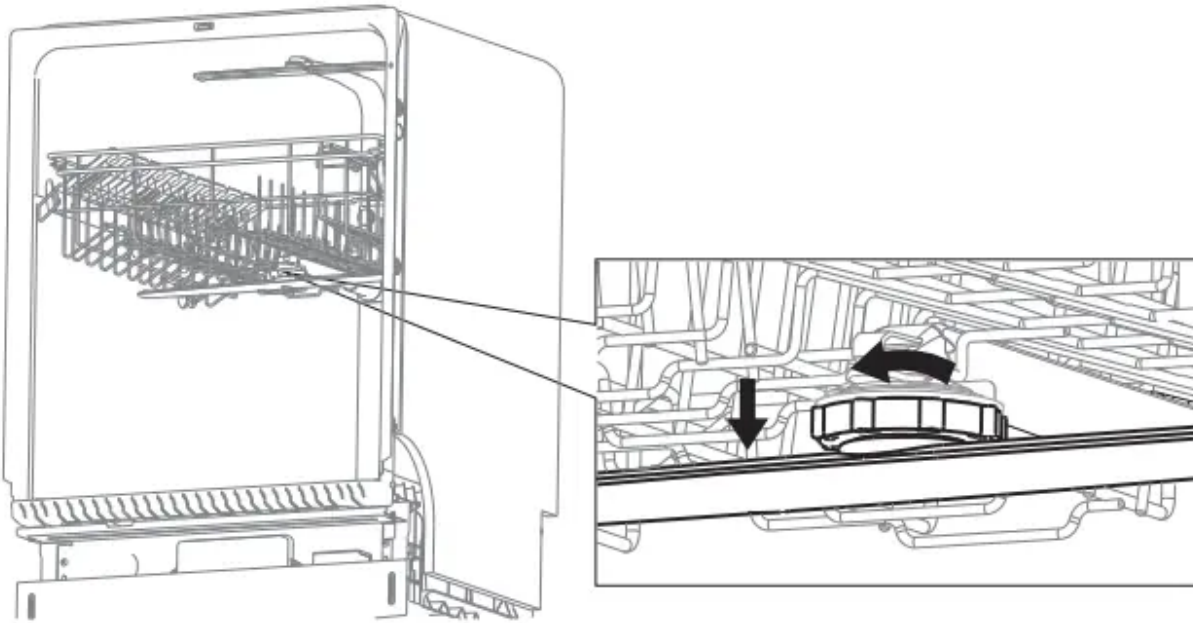
1. Check whether the nozzle holes are clogged by food particles.
2. If cleaning is needed, remove the nozzle by pulling it upwards.
3. Clean the nozzle, and then push it back into place.
4. Check whether the nozzle is engaged correctly by rotating it by hand.



### Middle nozzle

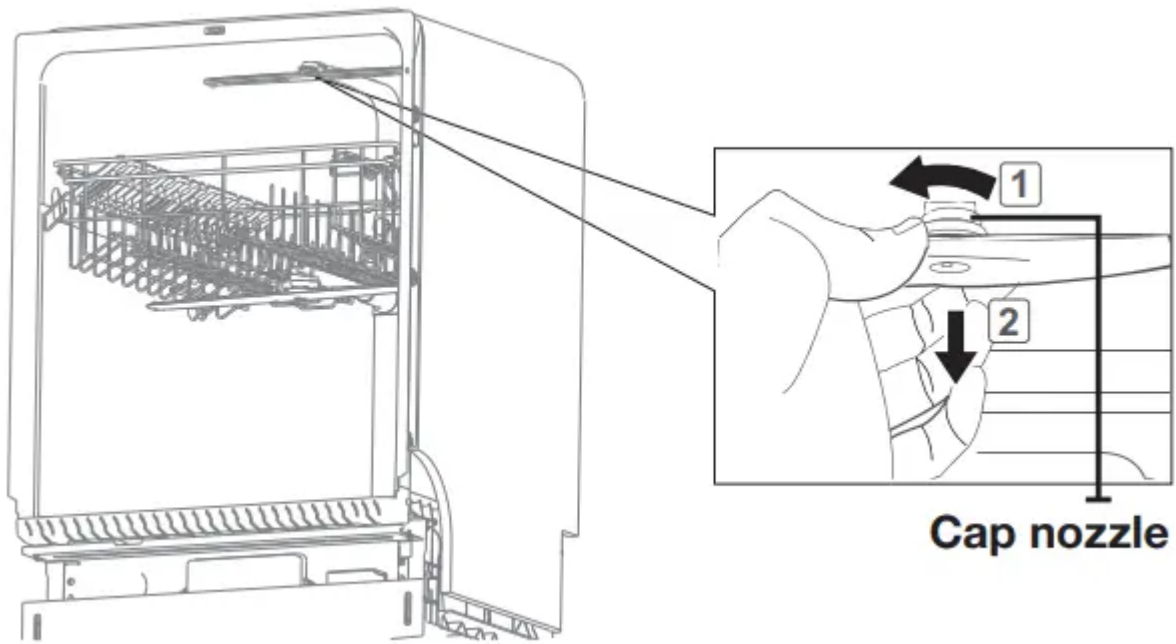
1. Pull the upper rack towards the front and remove it.

2. Check whether the nozzle holes are clogged by food particles.
3. If cleaning is needed, remove the nozzle.
4. To remove the nozzle, unfasten and remove the nut, and then remove the nozzle.
5. Clean the nozzle, re-insert it, and fasten the nut.
6. When fastening the nut, turn it firmly by hand.
7. Check whether the nozzle is engaged correctly by rotating it by hand.



### Upper nozzle

1. Check whether the nozzle holes are clogged by food particles.
2. If cleaning is needed, remove the nozzle.
3. To remove the nozzle, pull out the upper rack first, unfasten the nozzle cap by turning it counterclockwise, and then remove the upper nozzle.
4. Clean the nozzle, re-insert it, and then fasten the nozzle cap to the nozzle by turning the cap clockwise.
5. Check whether the nozzle is engaged correctly by rotating it by hand.



## STORING YOUR DISHWASHER

If you need to store your dishwasher for an extended period of time, first drain and disconnect it. If you leave water in the hoses and internal components, you can damage the dishwasher. After draining and disconnecting the dishwasher, be sure to turn off the water supply valve and circuit breaker.

# **TROUBLESHOOTING**

**CHECK THESE POINTS IF YOUR DISHWASHER...**



PROBLEM	POSSIBLE CAUSE	SOLUTION
Will not start	The door is not closed completely.	Check if the door is latched and closed completely
	No cycle is selected	Select a proper cycle.
	The power cable is not connected.	Connect the power cable properly.
	The Control Panel is locked.	Unlock the child lock
	A circuit breaker is open.	Reset the circuit breaker.
It's taking too long with an operation or cycle.	Cold water is being supplied.	Check if the water supply line is connected to a hot water supply. (Additional time is required to heat cold water.)
There are food particles remaining on dishes. (Not cleaning properly.)	You selected an inappropriate cycle.	Select a cycle according to the number and soil level of the dishes, as directed in this manual.
	The water temperature is low	Connect the water supply line to a hot water supply.  For best performance, the temperature of the supplied water should be 120 °F (49 °C).
	Low water pressure.	The water pressure should be between 20 and 120 psi (140 - 830 kPa).
	The water is too hard.	Use high-quality, fresh detergent with rinse aid.
	Dishwasher detergent was not used.	

		Use automatic dishwasher detergent. We recommend a powder or gel type dishwasher detergent.
	Detergent remains in the dispenser.	Make sure large items such as cookie sheets, cutting boards, or containers, etc. are not blocking the detergent dispenser and preventing it from opening properly. Rearrange the dishes so they do not interfere with detergent dispenser operation.
	There is no rinse aid.	Check the dispenser and add rinse aid. Use liquid type rinse aid.
	A nozzle is clogged.	Clean the nozzle
	The dishes are improperly loaded. Too many dishes have been loaded.	Rearrange the dishes so they do not interfere with nozzle rotation and detergent dispenser operation. Load only an appropriate number of dishes. Load your dishes as recommended.
Leaves glasses with a dull film.	The water supplied is soft and too much detergent was used.	Underload the dishwasher and use a rinse aid to minimize this.
	Aluminum dishes were included in the wash load.	Remove the marks on the dishes using a low sensitivity cleaner.
Leaves a yellow or brown film on the inside of the dishwasher.	This is caused by coffee and tea soils.	Remove the soils using a spot cleaner.
Does not dry dishes well.	There is no rinse aid in the dispenser.	Check the dispenser and add rinse aid. Use a liquid type rinse aid.
	The temperature of the water is low when the dishwasher is running.	Connect the water supply line to a hot water supply. Use rinse aid with the Sanitize option.

	Too many dishes have been loaded.	Proper loading of items can affect drying. Load your dishes as recommended.
	Glasses and cups with concave bottoms hold water. This water may spill onto other items when you are unloading.	After the cycle finishes, empty the lower rack first and then the upper rack. This will prevent water from dripping from the upper rack onto the dishes in the lower rack.
Has a bad odor.	Water was left over from an incomplete cycle.	Insert detergent without loading dishes, and run the Normal cycle to clean the dishwasher.
	The Drain Hose is obstructed	Contact a qualified service technician to remove any obstruction from the drain hose.
	The dishwasher is not used daily or soiled dishes are left in unit too long.	With the dishwasher empty and no detergent, place a glass with 8 ounces of vinegar upright into the lower rack, and then run a Normal cycle.
Is too noisy.	Sound is generated when the dispenser cover is open and the drain pump is operating in an early stage.	This is normal operation.
	The dishwasher is not level.	Ensure the dishwasher is level.
	Foreign material (a screw, a plastic piece) is in the pump chamber.	piece) is in the pump chamber. Contact a qualified service technician to remove foreign material from the pump chamber.
	There is a 'chopping' sound because a nozzle is bump	Rearrange the dishes.



A nozzle does not rotate smoothly.	The nozzle hole is clogged with food particles.	Clean the nozzle hole.
	The nozzle is blocked by a dish or pot and cannot rotate.	After placing the dishes into the racks, rotate the nozzles by hand to check whether any of the dishes interfere with them.
Water won't pump out of the dishwasher.	The drain is clogged.	Contact a qualified service technician to remove any obstruction from the drain hose and check the drain pump operation.
Has a bent upper rack after loading dishes	The dishes are not loaded properly.	Load your dishes as recommended.

## INFORMATION CODES

The Control Panel displays information codes to help you understand what is occurring with your dishwasher

If your dishwasher has a problem, the CODE SYMBOL lights blink as shown below

Code Symbol	Meaning	Possible
	No water	The water tap isn't opened.
		The pressure switch is broken
		The wash pump isn't working.
		There is a problem with the Main PBA.
	High-water level	The high water switch was activated 5 times for 5 seconds
		The high water switch was on continuously for 120 seconds.
		There is a problem with the Main PBA.
	Not reaching required temperature	The heater was on continuously for 60 minutes, but the water did not heat up to the required temperature.
		The heater is broken.
		The temperature detected by the thermistor is wrong.
	Water leakage	The leakage switch is broken.
		The leakage switch was activated for 2 seconds
		There is a problem with the Main PBA.
	Thermistor open-circuit failure	The thermistor suffered an open-circuit failure.
		There is a problem with the Main PBA.
	Thermistor short-circuit failure	The thermistor suffered a short circuit failure.
		There is a problem with the Main PBA.

 <p>Auto   Normal   Heavy   Express 60</p>	<p>Abnormal operation of touch key-press</p>	<p>A touch key was operated abnormally or operated abnormally. Example: A key was pressed for more than 30 seconds.</p>
 <p>Auto   Normal   Heavy   Express 60</p>	<p>Abnormal signal</p>	<p>A touch key was operated abnormally or operated abnormally. Example: A key was pressed for more than 30 seconds</p> <p>There is a problem with the Main PBA.</p> <p>There is a problem with the Sub PBA.</p>

**Warning**

This content is compiled from multiple sources and is provided for reference purposes only. It may not be complete or fully applicable to all situations. If you are unable to resolve your issue, please contact the product manufacturer or an authorized service provider for official support.

