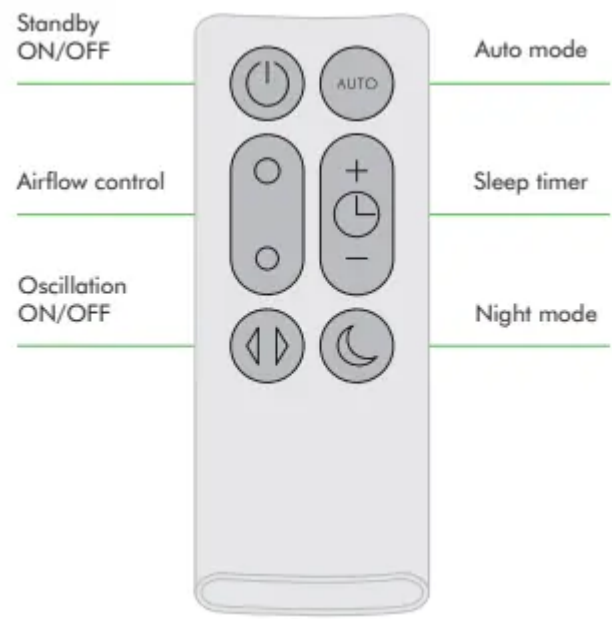
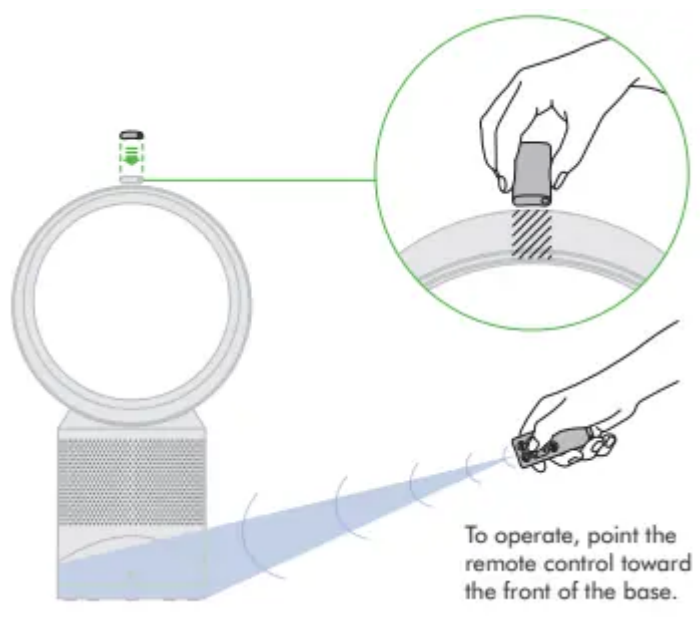


Control



Attach the remote control to the top of the appliance with the buttons facing down.



Display icons



A Solid white = cleaning/below air quality target



Flashing green = Wi-Fi is ready to connect to your Dyson link app

A Solid green = clean/air quality target has been met



Flashing white = Wi-Fi connecting

Off = appliance is not in auto cleaning mode



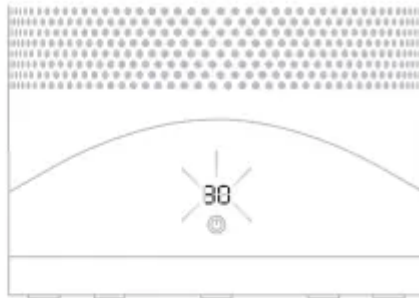
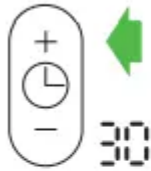
Solid white = Wi-Fi connected

☾ Solid white = appliance is in night mode

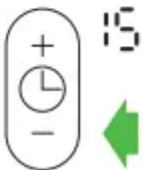
Off = Wi-Fi disabled

Off = appliance is not in night mode

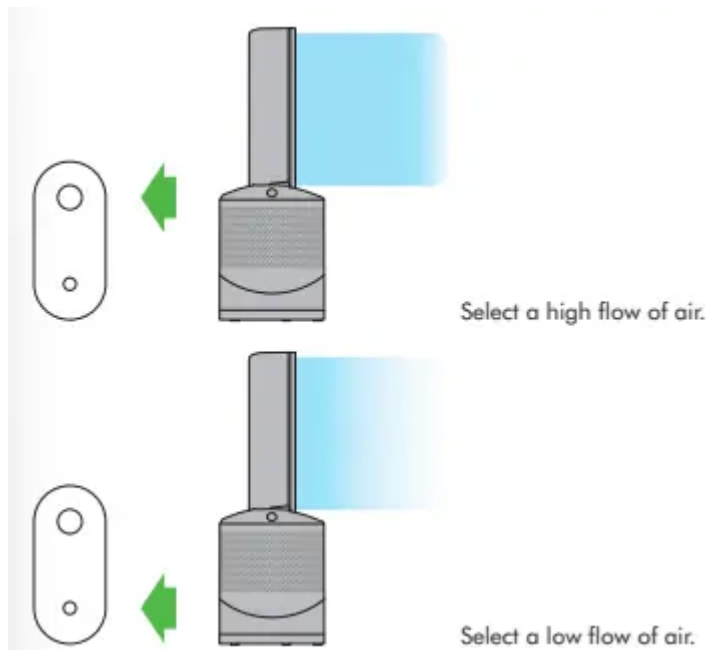
Sleep timer



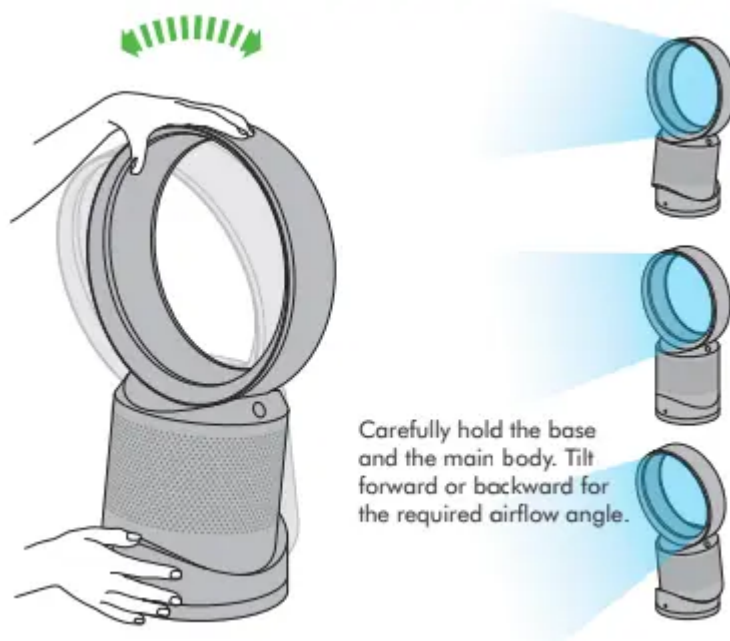
To set the sleep timer, select the desired time. When time reaches zero, the appliance will go into standby mode. To cancel, reduce the time until two dashes appear.



Airflow



Tilt function



Night mode



The night mode will dim the display and run quietly, making it ideal for use while sleeping.

When night mode is enabled (indicated by an illuminated half moon symbol in the top right corner of the display), the display will dim and after 5 seconds will fade to off. The half moon symbol remains illuminated.



If in manual mode, the power will reduce to level 4. When night mode is activated, if it is already below level 4, it will remain the same. This can be manually changed if desired. The display will illuminate briefly, then fade as before.

If in Auto mode the power will be reduced automatically.

Auto mode



Auto mode adjusts the power according to the air quality in the room.



When Auto mode is enabled (indicated by an A symbol in the bottom left corner of the display), the on-board sensors will intelligently adjust the speed of the appliance according to the air quality.

Air quality target has been met



If the air is clean the A symbol will turn green and the numerical display will switch off. If the air quality worsens the A symbol will turn white and the appliance will automatically restart cleaning the room.



For additional control the Dyson link app can be used to further adjust the sensitivity of the appliance

A period of 6 days is required after the machine is first used for the sensor to calibrate.
During this period the machine may be more sensitive to VOCs than normal.

Setting up Dyson Link app

The appliance can be enhanced when connected to the Dyson Link app on your smart device.



Download the Dyson Link app, available on iOS and Android.



Select 'Add a Product' from within the app and follow the on screen instructions.



In order to connect the appliance, you will need the information on the front on this manual.



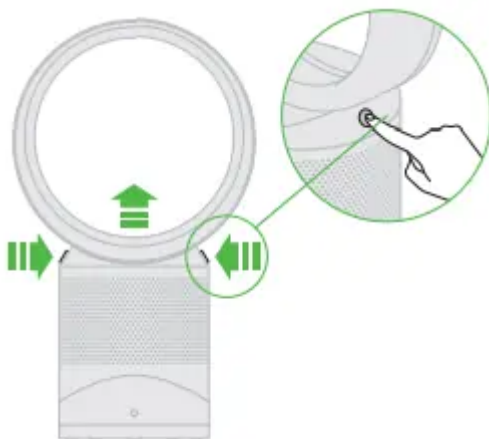
Clearing blockages



Ensure the appliance is unplugged. Look for blockages in the air inlet holes on the filter. Use a soft brush to remove debris.



Look for blockages in the small aperture inside the loop amplifier. Use a soft brush to remove debris.

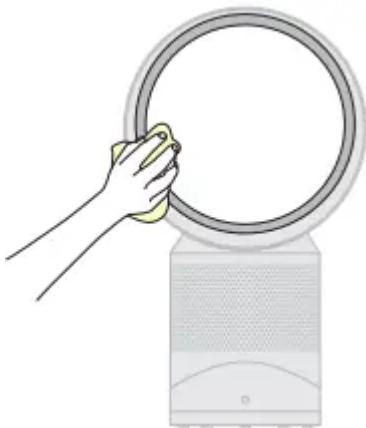


Press buttons to lift off loop amplifier and lift off filter.

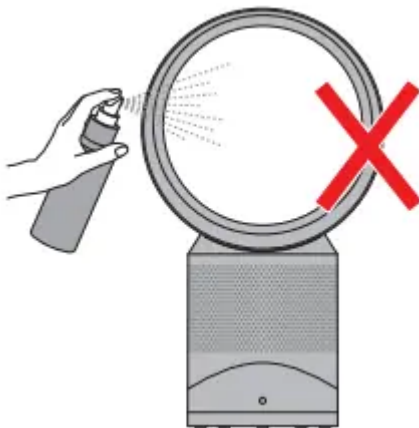


Look for blockages in the air inlet holes under the filter and use a soft brush to remove debris. Replace the filter and then the loop amplifier.

Cleaning



Ensure the appliance is unplugged. Dust may accumulate on the surface of the machine. Wipe dust from the loop amplifier, filter unit and other parts with a dry or damp cloth when dust accumulates.



Do not use detergents or polishes to clean the appliance.



Clean the hatch every time the filter is replaced. Open the small hatch on the side of the appliance. Use a cotton swab to clean inside and remove any debris. This maintains sensor accuracy and ensures the continuing high performance of the appliance.

Replacing the filter unit

1.



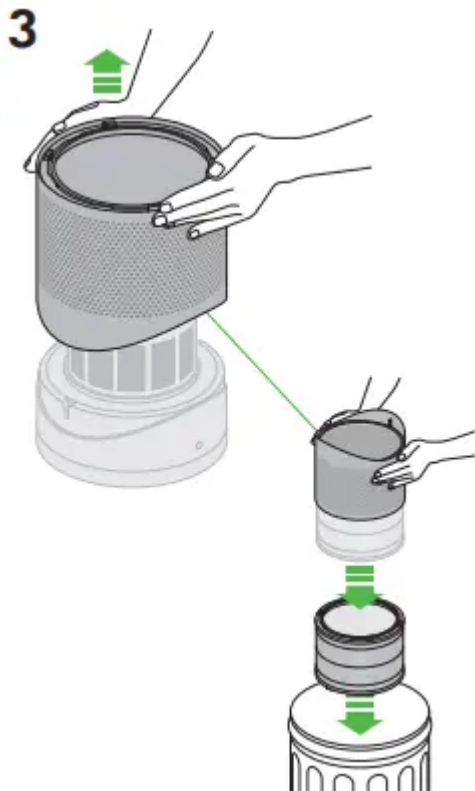
When your non-washable filter unit needs replacing the appliance will display the pattern shown. To replace the nonwashable filter unit, follow these steps. Ensure your appliance is unplugged. Your Dyson appliance is programmed to remind you to replace the filter unit after 12 months based on 12 hours usage a day. Please note your indicator will activate sooner with more use. The indicator is only a guide and you may need to replace the filter unit more regularly.



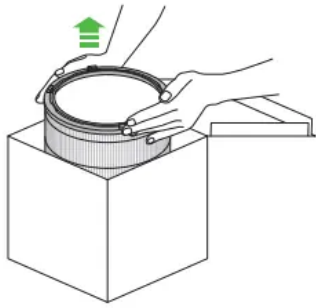
2.



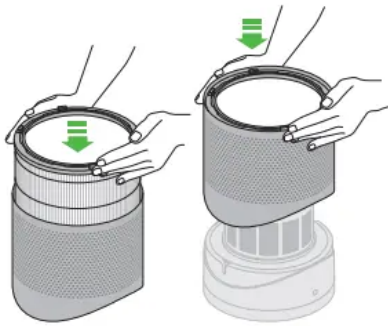
3.



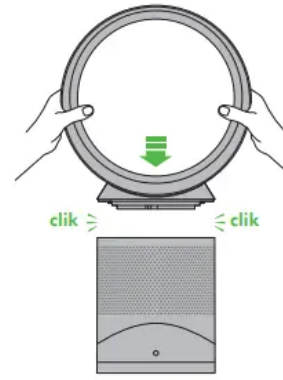
4



5



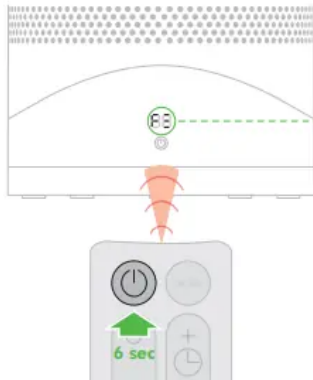
6



7



When you have re-assembled your appliance, press and hold the 'Standby ON/OFF' button for 6 seconds.



A clockwise-rotating loading pattern will be shown on the LED display.



Once the loading pattern is complete, the appliance will return to its normal usage.

Clearing your Wi-Fi settings



It is possible to remove your network details from the appliance.



Press and hold the ON/ OFF button on the appliance for longer than 20 seconds.



The Wi-Fi symbol will flash alternately between white and green to indicate that your network details have been removed.

If you clear your network settings the appliance will not connect to the Dyson link app.

Enabling or Disabling Wi-Fi



10-20 sec

Wi-Fi can be enabled or disabled by pressing and holding the ON/ OFF button on the appliance for between 10 and 20 seconds.

Wi-Fi disabled



Wi-Fi enabled



Solid white = Wi-Fi connected



Flashing white = Wi-Fi connecting



Flashing green = Wi-Fi is ready to connect to your Dyson link app

Off = Wi-Fi disabled

If Wi-Fi is disabled, the appliance will not connect to the Dyson link app.

Troubleshooting



If you see a flashing 'E' when trying to use the appliance, it is unable to do what has been requested.



If you see a solid 'E' when trying to use the appliance, it shows the appliance has stopped functioning correctly

Make sure you have checked the following:

The room temperature is above 5°C.

There are no blockages in the inlet grille or loop amplifier outlet.

The filter has been correctly assembled and doesn't need to be replaced.

The appliance is correctly plugged in directly to the wall outlet.

If the message still displays, unplug and leave for 10 seconds before turning on again.

If the problem persists, please call the Dyson helpline.

USING YOUR DYSON APPLIANCE

LOOKING AFTER YOUR DYSON APPLIANCE

- Do not carry out any maintenance or repair work other than that shown in this Dyson Operating Manual, or advised by the Dyson Helpline.
- Always disconnect the plug from the power outlet before inspecting for problems. If the appliance will not operate, first check the power outlet has electricity supply and that the plug is properly inserted into the socket.

CONTROL WITHOUT REMOTE

- The appliance can be controlled through your Dyson link app.

REPLACEABLE PARTS

BATTERY REPLACEMENT

CAUTION

- Unscrew the battery compartment on the remote control. Loosen the base and pull to remove the battery.
- Do not install backwards or short circuit the batteries.
- Do not attempt to dismantle or charge the batteries. Keep away from fire.
- Follow battery manufacturers' instructions when installing new batteries (battery type CR 2032).

NON-WASHABLE FILTER UNIT

- Your filter unit is non-washable and non-recyclable.
- To replace your filter unit follow the steps as shown.
- To dispose of your old filter unit: remove it from the appliance and place it in your household waste bin.
- A new filter unit can be purchased at www.dyson.com/filter.

AUTO MODE

- A period of 6 days is required after the machine is first used for the sensor to calibrate. During this period the machine may be more sensitive to VOCs than normal.

DISPOSAL INFORMATION

- Dyson products are made from high grade recyclable materials.
- Recycle where possible.
- The battery should be removed from the product before disposal. Dispose of the battery in accordance with local ordinances or regulations.

DYSON CUSTOMER CARE

THANK YOU FOR CHOOSING TO BUY A DYSON APPLIANCE

If you have a question about your Dyson appliance, call the Dyson Helpline with your serial number and details of where and when you bought the appliance.

Most questions can be solved over the phone by one of our Dyson Helpline staff.

If your Dyson appliance needs service, call the Dyson Helpline so we can discuss the available options. If your Dyson appliance is under warranty, and it is a covered repair, it will be repaired at no cost. Your serial number can be found on your rating plate which is on the main body of the appliance.

Your serial number can be found on your rating plate which is on the base of the appliance.

PLEASE REGISTER AS A DYSON APPLIANCE OWNER

To help us ensure you receive prompt and efficient service, please register as a Dyson appliance owner. There are four ways to do this:

- Telephone the Dyson Helpline at 1-877-397-6622.
- Complete the enclosed Warranty Form and mail it to us.
- SMARTPHONE. Download the Dyson Link app and you will be taken through registration as part of the set up.

This will confirm ownership of your Dyson appliance in the event of an insurance loss, and enable us to contact you if necessary.

IMPORTANT SAFETY INSTRUCTIONS

BEFORE USING THIS APPLIANCE READ ALL INSTRUCTIONS AND CAUTIONARY MARKINGS IN THIS MANUAL AND ON THE APPLIANCE

When using an electrical appliance, basic precautions should always be followed, including the following:

WARNING THE APPLIANCE AND THE REMOTE CONTROL BOTH CONTAIN MAGNETS.

1. Pacemakers and defibrillators may be affected by strong magnetic fields. If you or someone in your household has a pacemaker or defibrillator, avoid placing the remote control in a pocket or near to the device.
2. Credit cards and electronic storage media may also be affected by magnets and should be kept away from the remote control and the top of the appliance.

WARNING These warnings apply to the appliance, and also where applicable, to all tools, accessories, chargers or mains adaptors.

TO REDUCE THE RISK OF FIRE, ELECTRIC SHOCK, OR INJURY:

1. This Dyson appliance is not intended for use by persons (including children) with reduced physical, sensory or reasoning capabilities, or lack of experience and knowledge, unless they have been given supervision or instruction concerning use of the appliance by a person responsible for their safety.
2. Ensure appliance is fully assembled in line with the instructions before use. Do not dismantle the appliance or use without the loop amplifier fitted.
3. Do not allow to be used as a toy. Close attention is necessary when used by or near children. Children should be supervised to ensure that they do not play with the appliance.
4. Use only as described in this Dyson Operating Manual. Do not carry out any maintenance other than that shown in this manual, or advised by the Dyson Helpline.

5. Suitable for dry location ONLY. Do not use outdoors or on wet surfaces and do not expose to water or rain.
6. Do not handle any part of the plug or appliance with wet hands.
7. Do not operate any appliance with a damaged cord or plug. Discard the appliance or return to an authorized service facility for examination and/or repair. If the supply cord is damaged it must be replaced by Dyson, its service agent or similarly qualified person in order to avoid a hazard.
8. If the appliance is not working as it should, has received a sharp blow, has been dropped, damaged, left outdoors, or dropped into water, do not use and contact the Dyson Helpline.
9. Do not stretch the cord or place the cord under strain. Keep cord away from heated surfaces.
10. Do not run cord under carpeting. Do not cover cord with throw rugs, runners or similar coverings. Arrange cord away from traffic area and where it will not be tripped over.
11. Do not unplug by pulling on the cord. To unplug, grasp the plug, not the cord. The use of an extension cord is not recommended.
12. Do not put any object into openings or the inlet grille. Do not use with any opening blocked; keep free of dust, lint, hair, and anything that may reduce airflow.
13. Do not use any cleaning agents or lubricants on this appliance. Unplug before cleaning or carrying out any maintenance.
14. Always carry the appliance by the base, do not carry it by the loop amplifier.
15. Turn off all controls before unplugging. Unplug from outlet when not in use for extended periods. To avoid a tripping hazard, safely coil the cord.
16. Do not use near furnaces, fireplaces, stoves or other high temperature heat sources.
17. Do not use in conjunction with or directly next to an air freshener or similar products.
18. Choking hazard - This remote control unit contains a small battery. Keep the remote control away from children and do not swallow the battery. If the battery is swallowed seek medical advice at once.
19. When removing or replacing the filter, take care to keep your fingers clear.

Warning

This content is compiled from multiple sources and is provided for reference purposes only. It may not be complete or fully applicable to all situations. If you are unable to resolve your issue, please contact the product manufacturer or an authorized service provider for official support.

