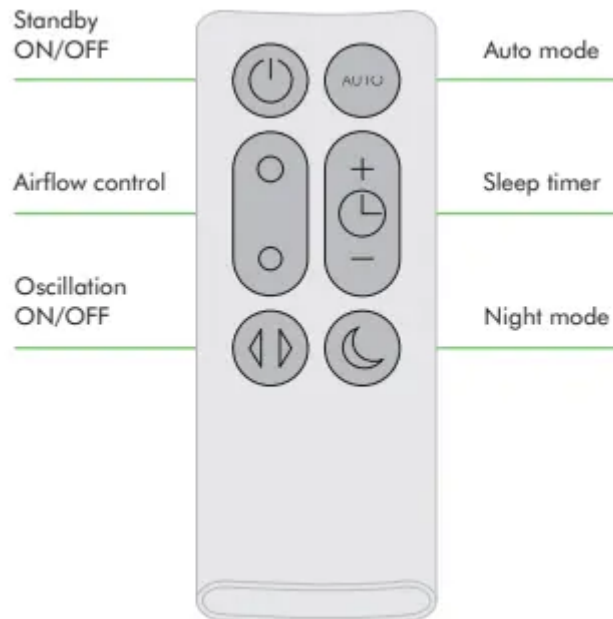
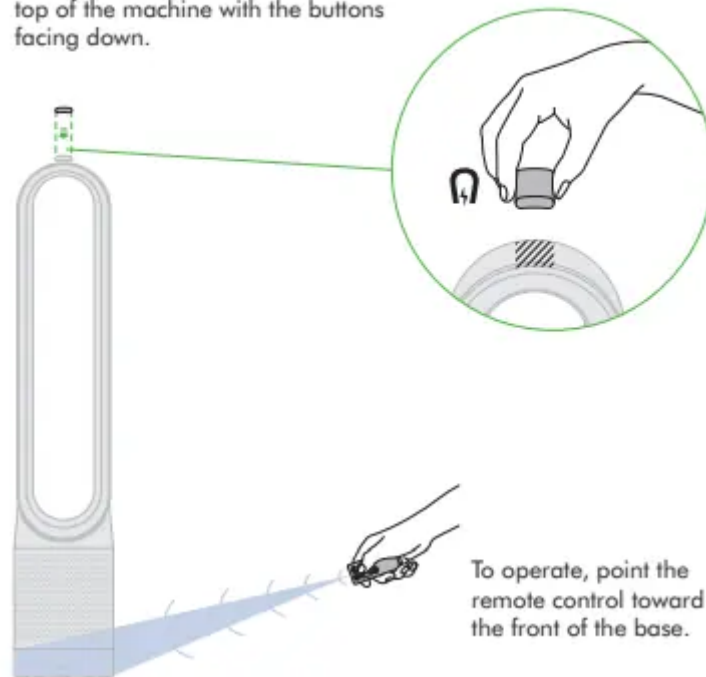


Control



Attach the remote control to the top of the machine with the buttons facing down.



To operate, point the remote control toward the front of the base.



Display icons



Flashing green = Wi-Fi is ready to connect to your Dyson Link app



Flashing white = Wi-Fi connecting



Solid white = Wi-Fi connected

Off = Wi-Fi disabled



Solid white = cleaning/below air quality target



Solid green = clean/air quality target has been met

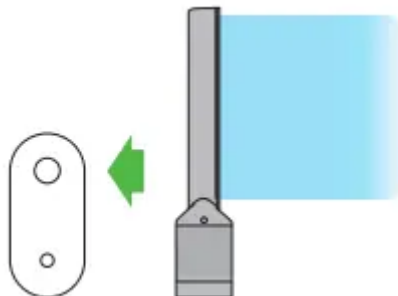
Off = machine is not in auto cleaning mode



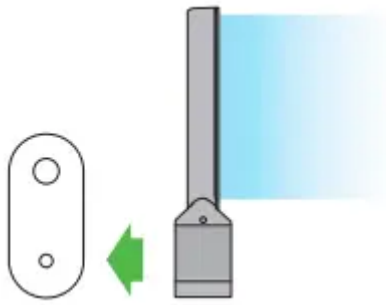
Solid white = machine is in night mode

Off = appliance is not in night mode

Airflow

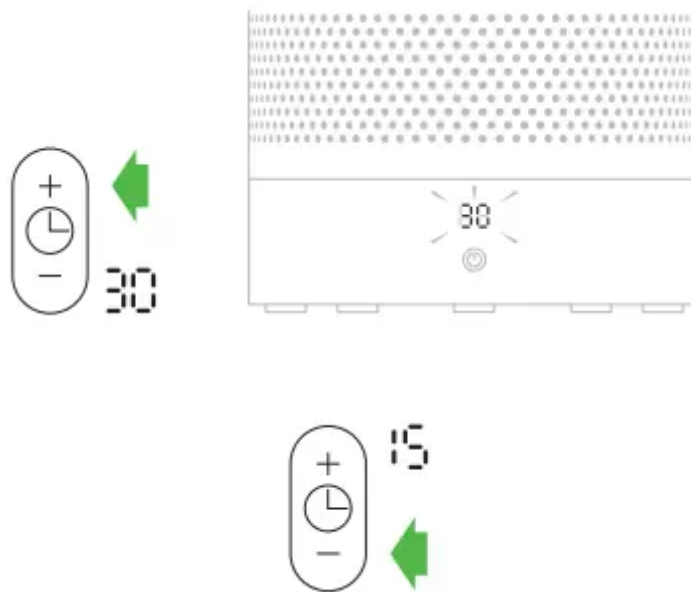


Select a high flow of air



Select a low flow of air.

Sleep timer



To set the sleep timer, select the desired time. When time reaches zero, the machine will go into standby mode. To cancel, reduce the time until two dashes appear.

Night mode



The night mode will dim the display and run quietly, making it ideal for use while sleeping.

When night mode is enabled (indicated by an illuminated half moon symbol in the top right corner of the display), the display will dim and after 5 seconds will fade to off. The half moon symbol remains illuminated.



If in manual mode, the power will reduce to level 4. When night mode is activated, if it is already below level 4, it will remain the same.

This can be manually changed if desired. The display will illuminate briefly, then fade as before.

If in Auto mode the power will be reduced automatically

Auto mode



Auto mode adjusts the power according to the air quality in the room



When Auto mode is enabled (indicated by an A symbol in the bottom left corner of the display), the on-board sensors will intelligently adjust the speed of the machine according to the air quality

Air quality target has been met



If the air is clean the A symbol will turn green and the numerical display will switch off. If the air quality worsens the A symbol will turn white and the machine will automatically restart cleaning the room.

Setting up Dyson Link app

The machine can be enhanced when connected to the Dyson Link app on your smart device.



Download the Dyson Link app, available on iOS and Android.



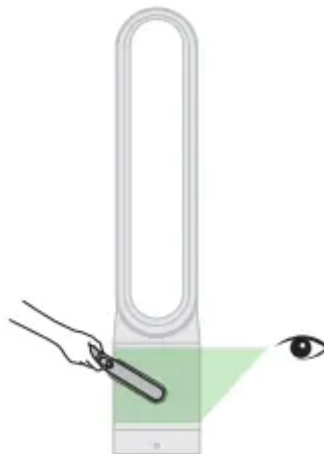
Select 'Add a Product' from within the app and follow the on screen instructions.



In order to connect the machine, you will need the information on the front of this manual.

Clearing blockages

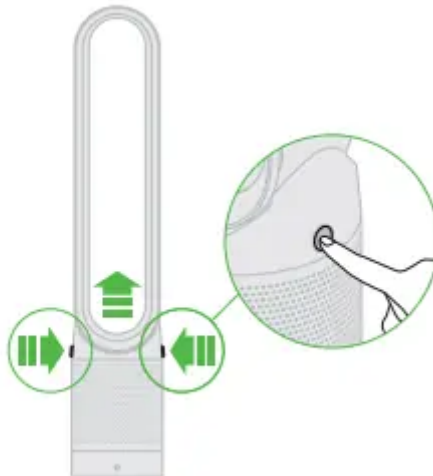
Ensure the machine is unplugged. Look for blockages in the air inlet holes on the filter. Use a soft brush to remove debris.



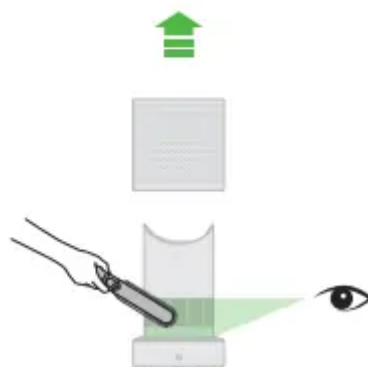
Look for blockages in the small aperture inside the loop amplifier.



Use a soft brush to remove debris.

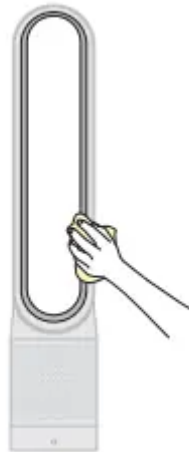


Press buttons to lift off loop amplifier and lift off filter.



Look for blockages in the air inlet holes under the filter and use a soft brush to remove debris. Replace the filter and then the loop amplifier.

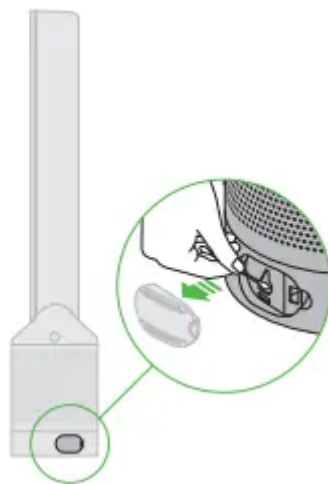
Cleaning



Ensure the machine is unplugged. Dust may accumulate on the surface of the machine. Wipe dust from the loop amplifier, filter unit and other parts with a dry or damp cloth when dust accumulates.



Do not use detergents or polishes to clean the machine.



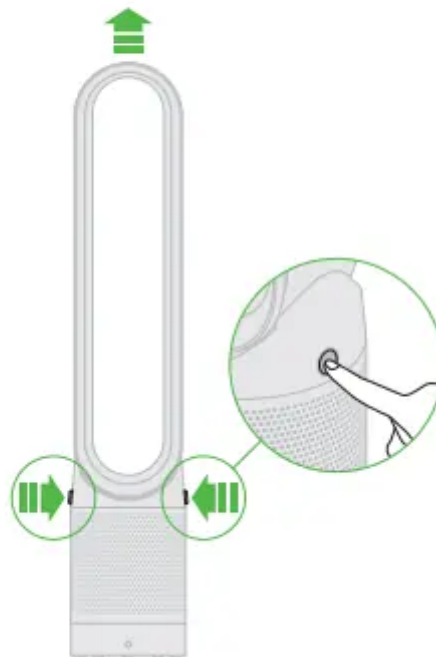
Clean the hatch every time the filter is replaced. Open the small hatch on the side of the machine. Use a cotton swab to clean inside and remove any debris. This maintains sensor accuracy and ensures the continuing high performance of the machine.

Replacing the filter unit

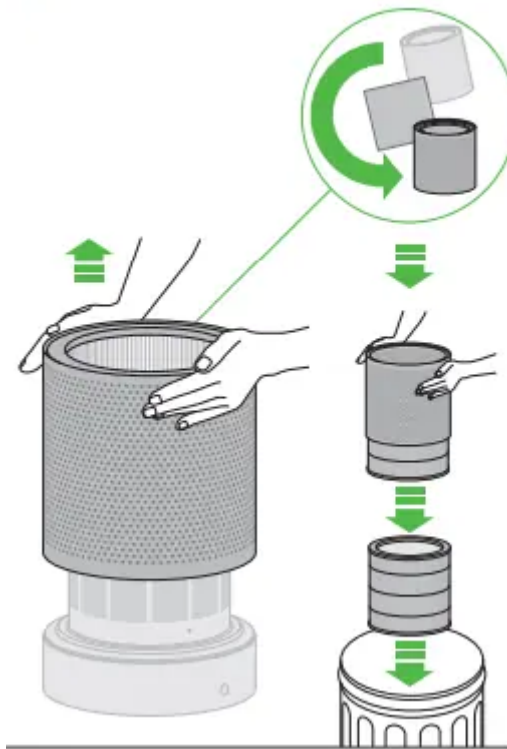
When your non-washable filter unit needs replacing the machine will display the pattern shown. To replace the non-washable filter unit, follow these steps. Ensure your machine is unplugged. Your Dyson machine is programmed to remind you to replace the filter unit after 12 months based on 12 hours usage a day. Please note your indicator will activate sooner with more use. The indicator is only a guide and you may need to replace the filter unit more regularly



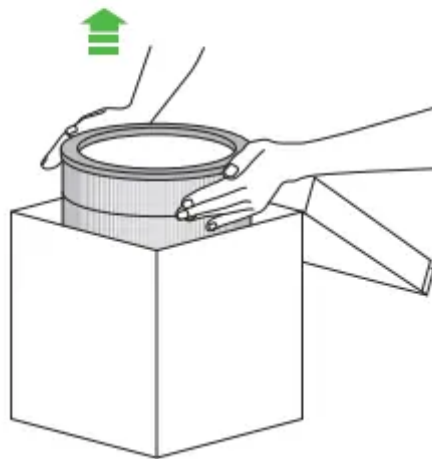
2



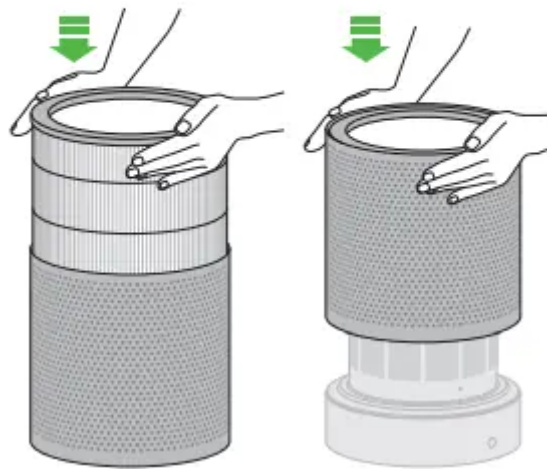
3



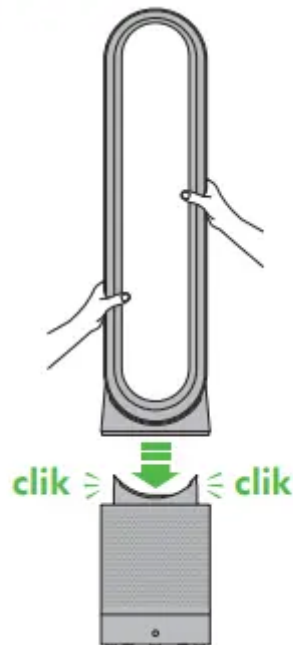
4



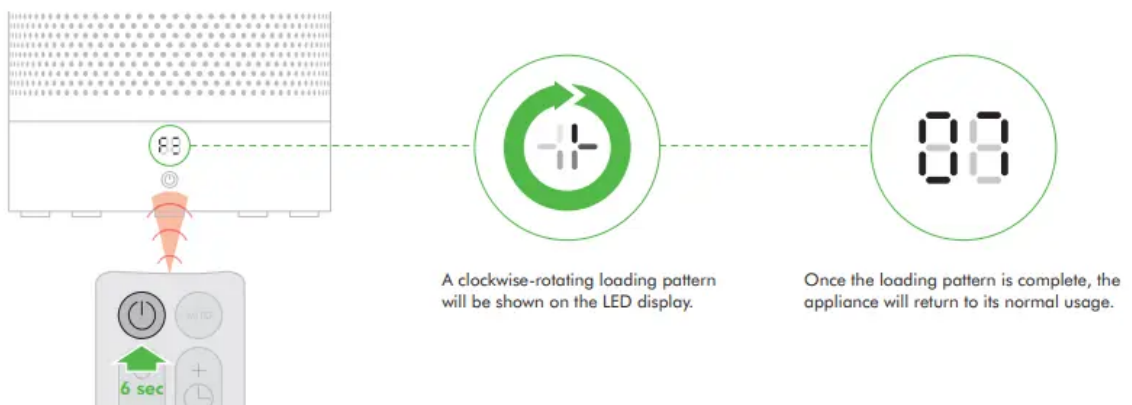
5



6



When you have re-assembled your appliance, press and hold the 'Standby ON/OFF' button for 6 seconds.



Clearing your Wi-Fi setting



It is possible to remove your network details from the appliance.

21 SECS



Press and hold the ON/ OFF button on the appliance for longer than 20 seconds.

Press and hold the ON/ OFF button on the appliance for longer than 20 seconds.



The Wi-Fi symbol will flash alternately between white and green to indicate that your network details have been removed.

Enabling or Disabling Wi-Fi



Wi-Fi can be enabled or disabled by pressing and holding the ON/ OFF button on the appliance for between 10 and 20 seconds.

Wi-Fi disabled



Wi-Fi enabled



Solid white = Wi-Fi connected



Flashing white = Wi-Fi connecting



Flashing green = Wi-Fi is ready to connect to your Dyson Link app

Off = Wi-Fi disabled

Troubleshooting



If you see a flashing 'E' when trying to use the appliance, it is unable to do what has been requested.



If you see a solid 'E' when trying to use the appliance, it shows the appliance has stopped functioning correctly.

Make sure you have checked the following:

The room temperature is above 5°C/ 41°F.

There are no blockages in the inlet grille or loop amplifier outlet.

The filter has been correctly assembled and doesn't need to be replaced.

The appliance is correctly plugged in directly to the wall outlet.

If the message still displays, unplug and leave for 10 seconds before turning on again.

If the problem persists, please call the Dyson Helpline.

Warning

This content is compiled from multiple sources and is provided for reference purposes only. It may not be complete or fully applicable to all situations. If you are unable to resolve your issue, please contact the product manufacturer or an authorized service provider for official support.

Document generated by [ManualsFile](#)

