

Custom-designed Features

Fingerprint recognition

Fingerprint recognition overview

You must register your fingerprint on your device first before using the fingerprint recognition function.

You can use the fingerprint recognition function in the following cases:

- To unlock the screen.
- To view locked contents in QuickMemo+.
- Confirm a purchase by signing in to an app or identifying yourself with your fingerprint.
 - Your fingerprint can be used by the device for user identification. Very similar fingerprints from different users may be recognized by the fingerprint sensor as the same fingerprint. For added security, set the screen lock using a pattern, PIN or Password.
 - If the device cannot detect your fingerprint, or you forget the value specified for registration, contact the LG Authorized Service Center with your device and ID card.

Precautions for fingerprint recognition

Fingerprint recognition accuracy may decrease due to a number of reasons. To maximize the recognition accuracy, check the following before using the device.

- Ensure that the fingerprint sensor is not damaged by a metallic object, such as coin or key.
- When water, dust or other foreign substance is on the fingerprint sensor or your finger, the fingerprint registration or recognition may not work. Clean and dry your finger before using the fingerprint sensor.
- A fingerprint may not be recognized properly if the surface of your finger has a scar or is not smooth due to being soaked in water
- If you bend your finger or use the fingertip only, your fingerprint may not be recognized. Make sure that your finger covers the entire surface of the fingerprint sensor.
- Scan only one finger for each registration. Scanning more than one finger may affect fingerprint registration and recognition.

- The device may generate static electricity if the surrounding air is dry. If the surrounding air is dry, avoid scanning fingerprints, or touch a metallic object, such as coin or key, to remove static electricity before scanning fingerprints.

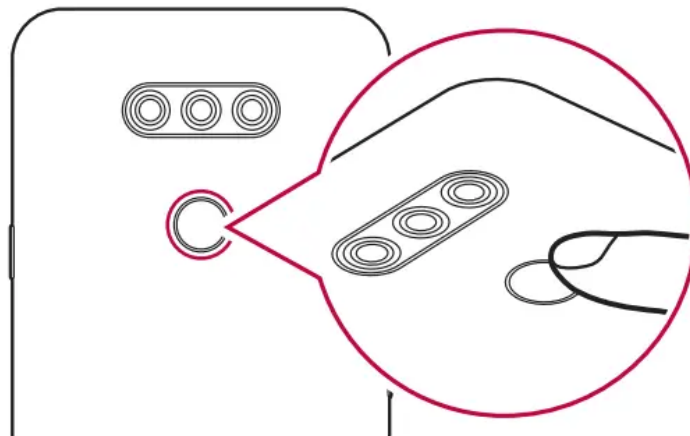
Registering fingerprints

You can register and save your fingerprint on the device to use fingerprint identification.

1. On the home screen, tap Settings → Lock screen & security → Fingerprints.

- This feature is available only when the screen lock is set.
 - Lock the device with a pattern, PIN or password.
- If the screen lock is not set, enable it by following the on-screen instructions. See Setting a screen lock for details.

2. Locate the fingerprint sensor on the back of the device and gently put your finger on it to register the fingerprint.



3. Follow the on-screen instructions.

- Repeat scanning the fingerprint by moving your finger little by little until the fingerprint is registered.

4. When the fingerprint registration is done, tap OK.

- Tap Add more to register another fingerprint. If you register only one fingerprint and the corresponding finger is not in a good condition, the fingerprint recognition may not work well. As a preventative measure, register multiple fingerprints.

Managing fingerprints

You can edit or delete registered fingerprints.

1. On the home screen, tap Settings Lock screen & security Fingerprints.

2. Unlock according to the specified lock method.

3.

From the fingerprint list, tap a fingerprint to rename it. To delete it, tap



Unlocking the screen with a fingerprint

You can unlock the screen or view locked content by using your fingerprint.

1. On the home screen, tap Settings Lock screen & security Fingerprints.
2. Unlock according to the specified lock method.
3. On the fingerprint settings screen, activate the desired function:
 - Screen lock: Unlock the screen with a fingerprint.
 - Content lock: Access contents you have locked in QuickMemo+ with a fingerprint.


Multi-tasking feature

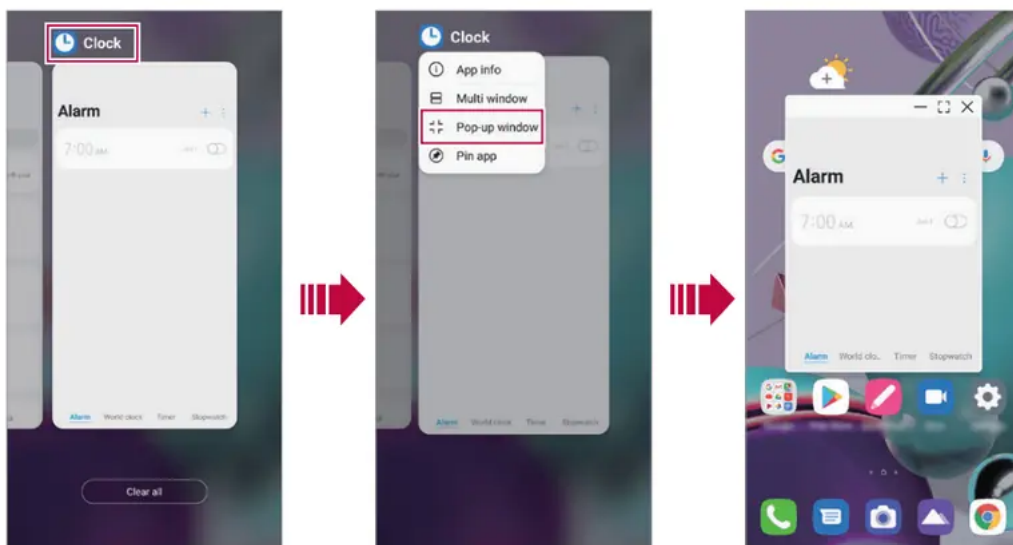
Recent Uses Screen

Swipe the Home button upward and hold to view the recent use history

Pop-up window




You can open multiple apps on the screen and easily switch between them at any time.

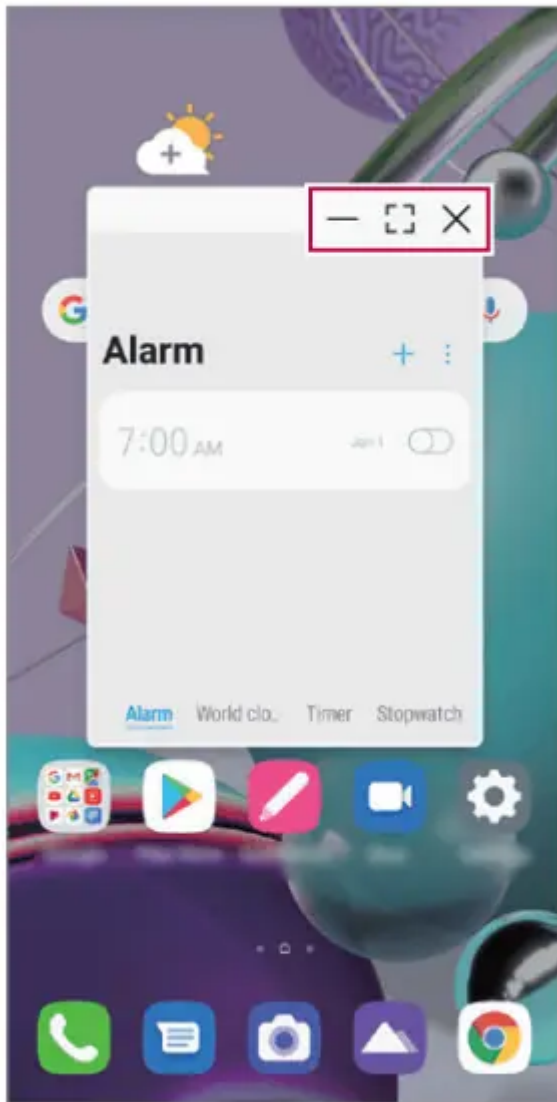
1. Swipe up and hold  from the bottom of the screen.
2. Tap the app icon on the top left of the app screen and select Pop-up window.
 - If you tap the app icon, the App info, Multi window, Pop-up window and Pin app options appear.
3. The app appears in the form of a pop-up window on the screen.



This feature may not be available in some apps or screens.

Using the pop-up window

-  : Minimizes the pop-up window. The pop-up window is minimized into the app icon floating on the screen, which can be moved anywhere you want.
-  : Expands the app to full screen.
-  : Closes the app




To move the pop-up window: Drag the top of the pop-up window.

To adjust the size of the pop-up window: Drag the left, right or bottom edge of the pop-up window.

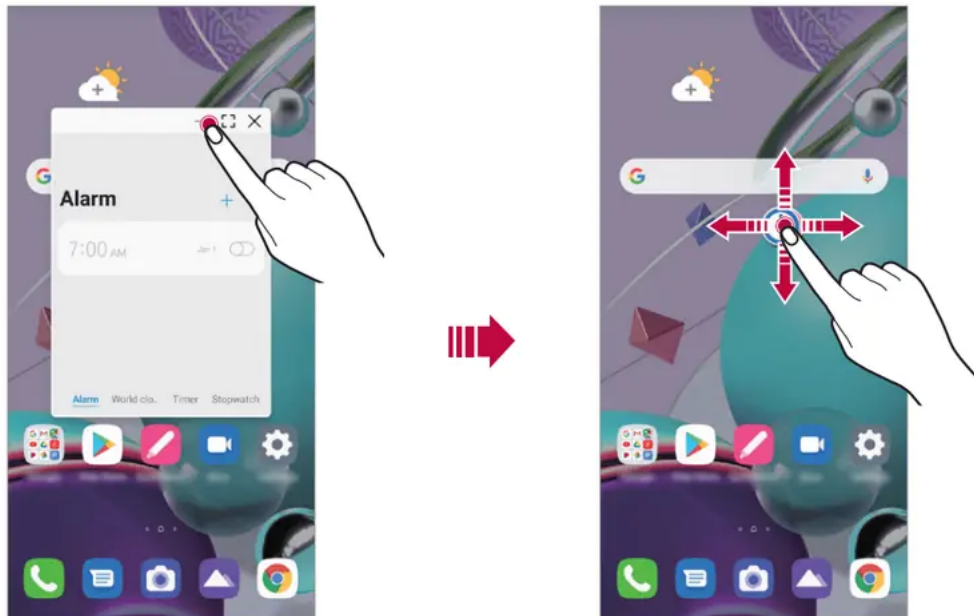
- You can open up to 5 apps using the pop-up windows.

- To select an app from the opened apps, tap one of the pop-up windows. The selected pop-up window comes to the front.
- Pop-up windows cannot be moved to the status bar or navigation bar area.

Using the app folder for pop-up windows

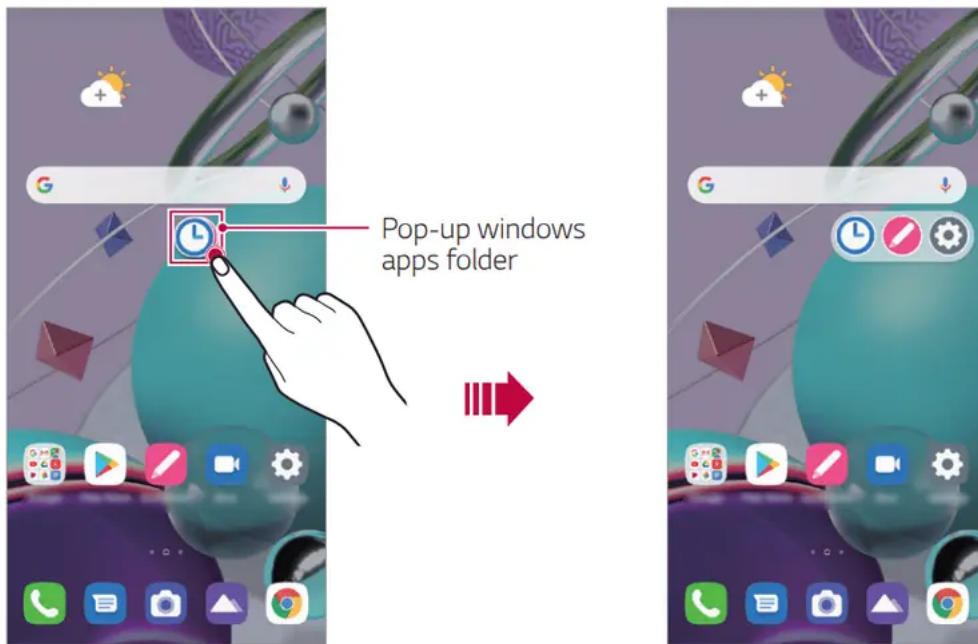
If you tap  on the pop-up window, the pop-up window is minimized into the app icon.

You can move the app icon anywhere you want by dragging it.



If two or more pop-up windows are minimized, the app folder is created to contain the app icons.


- The recently-used app icon is used as the app folder icon. If you tap the icon, all the icons for the minimized pop-up windows appear in the app folder




- If you touch and hold the app folder for pop-up windows and drag the app folder into Remove, the app folder will be removed.
- To remove one of the apps from the app folder, open the app folder and drag the app icon out of the app folder

Multi window

When using Gestures navigation (by default)

1. Swipe up and hold  from the bottom of the screen.
 - Recently-used apps appear.
 - If you tap the app icon, the App info, Multi window, Pop-up window and Pin app options appear.
2. Tap the app icon on the top left of the app to be displayed in the multiwindow and select Multi window.
 - The selected app appears at the top half of the screen.
3. Tap the other app to be displayed in the multi window.
 - The selected app appears at the bottom half of the screen.

When using Buttons only navigation

1. Tap  on the navigation bar.
 - Recently-used apps appear.

- If you tap the app icon, the App info, Multi window, Pop-up window and Pin app options appear.
2. Tap the app icon on the top left of the app to be displayed in the multiwindow and select



- The selected app appears at the top half of the screen.
3. Tap the other app to be displayed in the multi window
 - To adjust the size of the split screen, drag the bar on the center of the screen.
 - To deactivate the multi window feature, drag the center bar up or down to the end of the screen.
 - The multi window feature is not supported in some LG apps or apps downloaded from Play Store.

Google Assistant


Google Assistant overview

Your device has the built-in Google Assistant feature. Find answers and get things done while on-the-go.

- To use this feature, first connect to the network and sign in to your Google Account.

Sign in

1. Press the Google Assistant key on the left side of the device. or Swipe diagonally from a bottom edge of the screen.
2. Follow the on-screen instructions.
 - The device saves your voice data for recognition.
3. Set whether to use the voice match unlock function.
 - If you use the voice match unlock function, you can unlock the device even when the device screen is turned off or the device is charging by saying “OK Google” or “Hey Google”.
 - This feature may be more vulnerable to security than the other screen locks, such as Pattern, PIN, and Password.
 - When a similar voice or your recorded voice is used, the screen may be unlocked.
 - To use this feature, tap **Settings** → **Lock screen & security** → **Secure lock settings** → **Smart Lock**, and then use the screen lock method you set to unlock the device. Tap Voice Match, then tap

Unlock with Voice Match , then enter the currently used unlock method again. Note that Swipe is excluded.


- You need to unlock the device by using the specified method if you fail to unlock the device with voice recognition. See Setting a screen lock for details.

4. Tap Save.

Accessing by Voice

1. When the home screen is turned off or locked, say “OK Google” or “Hey Google”.
2. When the Google Assistant screen appears, say a command or ask a question.

Accessing from Home Screen or Any Other Screen

1. Press the Google Assistant key on the left side of the device. or Swipe diagonally from a bottom edge of the screen.
2. Say a command or question when you see  on the bottom of the screen.
 - Voice recognition accuracy may decrease if you speak with an unclear voice or in a noisy place. When you use the voice recognition feature, increase its accuracy by speaking with a clear voice in a quiet place.

Basic Functions

Product components and accessories

The following items are included with your device.

- Device
- USB cable
- Charger
- Quick Start Guide
- Ejection pin



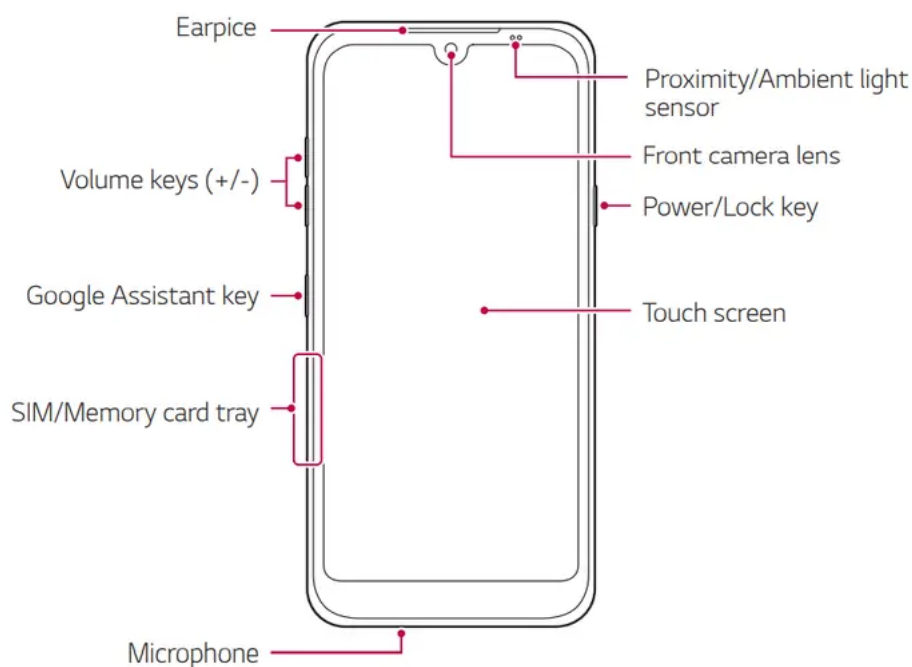
- The items supplied with the device and any available accessories may vary depending on the area and service provider.
- Do not use unapproved USB cables or chargers with your device. The LG limited warranty does not cover damage caused by the use of third party accessories.

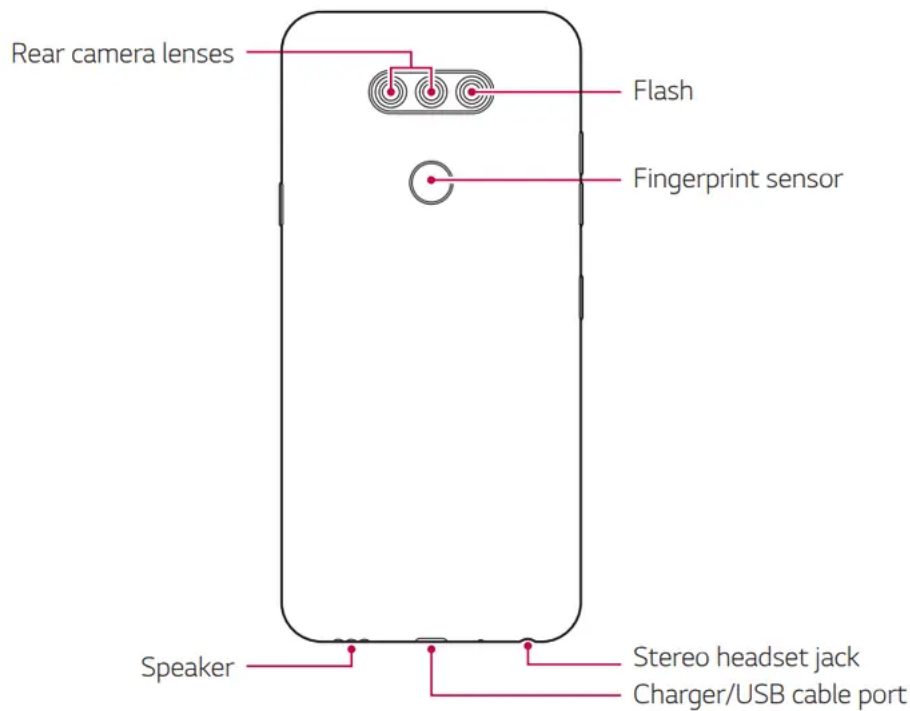
- Some of the device parts are made of tempered glass. If you drop your device on a hard surface or subject it to severe impact, the tempered glass may be damaged. If this happens, stop using your device immediately and contact the LG Authorized Service Center

NOTE:

- If any of these basic items are missing, contact the dealer from which you purchased your device.
- To purchase additional basic items, contact the LG Authorized Service Center.
- To purchase optional items, contact the LG Authorized Service Center for available dealers.
- Some items in the product box are subject to change without notice.
- The appearance and specifications of your device are subject to change without notice.
- Device specifications may vary depending on the area or service provider.
- Be sure to use authentic accessories provided by LG Electronics. Using third-party accessories may damage the device or cause malfunctions.

Parts overview





Press and hold the volume down key and Power/Lock key at the same time for a second to take a screenshot.

Do NOT attempt to remove the back cover. This device has a non-removable battery. Do not attempt to remove the back cover. Doing so may severely damage the battery and device, which could cause overheating, fire, and injury.

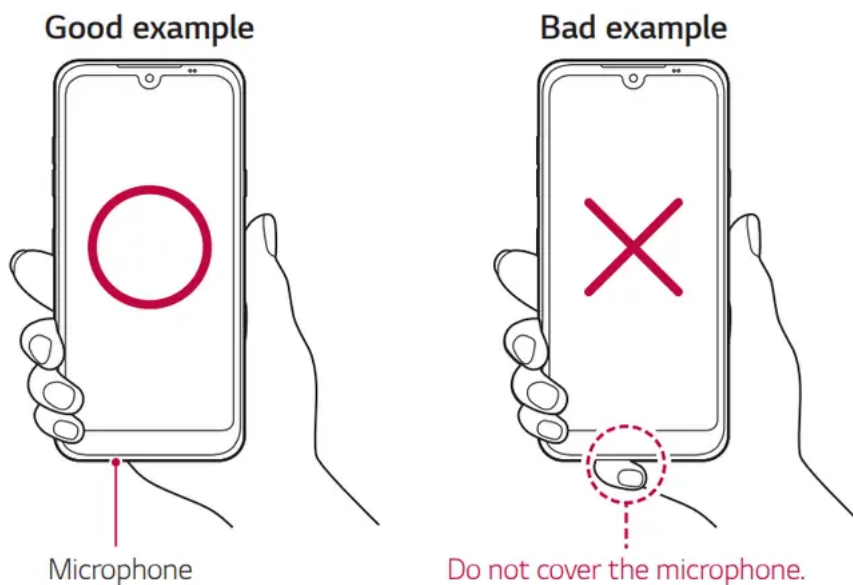
- Proximity/Ambient light sensor
 - Proximity sensor: During a call, the proximity sensor turns off the screen and disables touch functionality when the device is in close proximity to the human body. It turns the screen back on and enables touch functionality when the device is outside a specific range.
 - Ambient light sensor: The ambient light sensor analyzes the ambient light intensity when the auto-brightness control mode is turned on.
- Volume keys
 - Adjust the volume for ringtones, calls or notifications.
 - While using Camera, gently press a Volume key to take a photo. To take continuous photos, press and hold the Volume key.
 - Press the Volume Down key twice to launch the Camera app when the screen is locked or turned off. Press the Volume Up key twice to launch Screen-off memo.
- Power/Lock key
 - Briefly press the key when you want to turn the screen on or off.

- Press and hold the key when you want to select a power control option.
- Google Assistant key
 - Activate Google assistant. See Google Assistant for details.

NOTE:

- Some functions may be restricted for access, depending on the device specifications.
- Do not put heavy objects on the device or sit on it. Failure to do so may damage the touch screen.
- Screen-protective film or accessories may interfere with the proximity sensor.
- If your device is wet or is being used in a humid place, the touch screen or buttons may not function properly.

Hold the device correctly as shown below. If you cover the microphone hole with a hand, finger, or protective case while using the device, you may sound unclear during a call.



Turning the power on or off

Turning the power on

When the power is turned off, press and hold the Power/Lock key

When the device is turned on for the first time, initial configuration takes place. The first booting time for the smart phone may be longer than usual.

Turning the power off

Press and hold the Power/Lock key, then select Power off.

Restarting the device

When the device is not working properly or does not respond, restart it by following the instructions below.

1. Press and hold the Power/Lock key and the Volume Down key at the same time until the power is turned off.
2. When the device restarts, release the key

Power control options

Press and hold the Power/Lock key, then select an option.

- Power off: Turn the device off.
- Power off and restart: Restart the device.

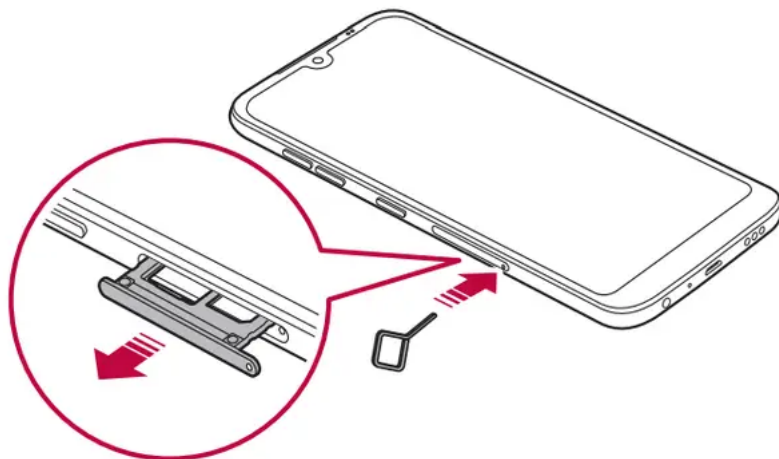
Installing the SIM card and memory card

Insert the SIM card from your mobile service provider and the separately purchased memory card into the device.

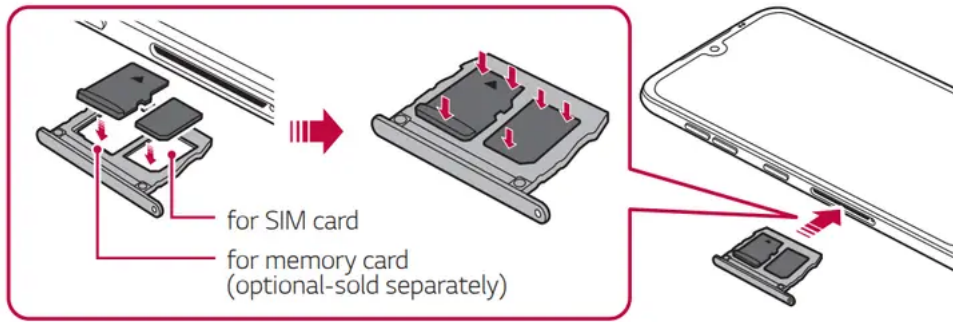
- Be careful with the ejection pin since it has a sharp edge.

In order for the water-resistant and dust-resistant features to work effectively, the card tray must be inserted correctly.

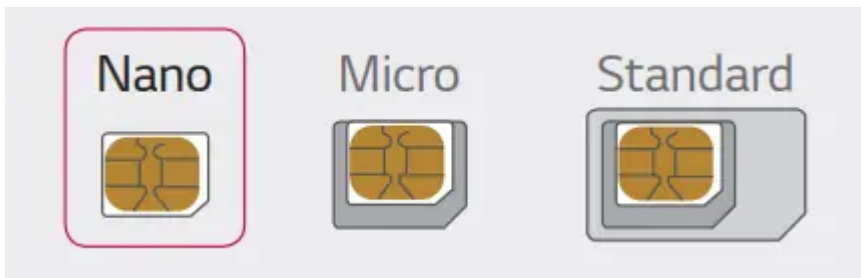
1. Insert the ejection pin into the hole in the card tray and then pull out the card tray from the device.



2. Place the SIM card and/or memory card on the card tray and then insert the card tray into the device in the direction of the arrow.




- This device supports only Nano SIM cards.



- For problem-free performance, it is recommended to use the phone with the correct type of SIM card. Always use a factory-made SIM card supplied by the service provider.
- Do not lose your SIM card. LG is not responsible for damage and other issues caused by loss or transfer of a SIM card.
- Be careful not to damage the SIM card when you insert or remove it.
- When you insert the SIM card or memory card, place it on the card tray correctly.
- When you insert the card tray back into the device, insert it horizontally in the direction of arrow as shown in the figure. Make sure that the card placed on the card tray does not move out of its position.
- Insert the SIM card with the gold-colored contacts facing downwards.
- Be sure to insert the SIM card into the device by following the instructions in the user manual.
- If you insert to or remove the card tray from the device, be careful not to let water or other liquids enter into the card tray. If a wet card tray or card is inserted into the device, your device may get damaged.
- Memory card is an optional item.
- Frequent writing and erasing of data may shorten the memory card lifespan.
- Some memory cards may not be fully compatible with the device. If you use an incompatible card, it may damage the device or the memory card, or corrupt the data stored in it.

Removing the memory card

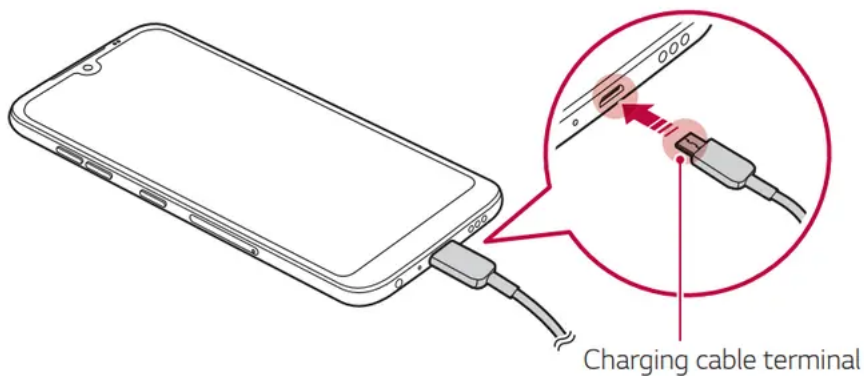
Unmount the memory card before removing it for safety.

1. On the home screen, tap Settings → Storage → .
 2. Insert the ejection pin into the hole in the card tray and then pull out the card tray from the device.
 3. Remove the memory card from the card tray.
 4. Insert the card tray back into the slot.
- Do not remove the memory card while the device is transferring or accessing information. This may cause data to be lost or corrupted, or may damage the memory card or the device. LG is not responsible for losses that result from the abuse or improper use of memory cards, including the loss of data.

Battery

Charging the battery

Before using the device, fully charge the battery



- Do not charge while the device or charging cable is wet or contains moisture. This can cause fire, electric shock, injury or damage to device. If there is moisture, stop using the device immediately and remove the moisture completely.
- Do not use unapproved USB cables or chargers with your device. The LG limited warranty does not cover damage caused by the use of third party accessories.
- Using the device when it is charging may cause electric shock. To use the device, stop charging it.

NOTE:

- Remove the charger from the power socket after the device is fully charged. This prevents unnecessary power consumption.

- Another way to charge the battery is by connecting a USB cable between the device and a desktop or laptop computer. This may take a longer time than plugging the adapter to a wall outlet.
- Do not charge the battery by using a USB hub that is unable to maintain the rated voltage. Charging may fail or unintentionally stop.
- Since the battery is a consumable, the battery life may be shortened as time goes.

Using the battery efficiently

Battery lifespan may decrease if you keep many apps and functions running simultaneously and continuously. Cancel background operations to increase battery life.

To minimize battery consumption, follow these tips:

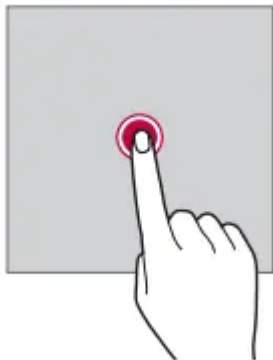
- Turn off the Bluetooth® or Wi-Fi network function when not using them.
- Set the screen timeout to as short a time as possible.
- Minimize the screen brightness.
- Set a screen lock when the device is not in use.
- Check the battery level while using any downloaded apps.

Touch screen

You can familiarize yourself with how to control your device by using touch screen gestures.

Tapping

Lightly tap with your fingertip to select or run an app or option.



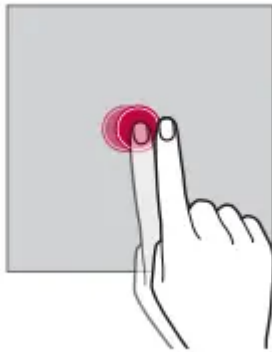
Touching and holding

Touch and hold for several seconds to display a menu with available options.



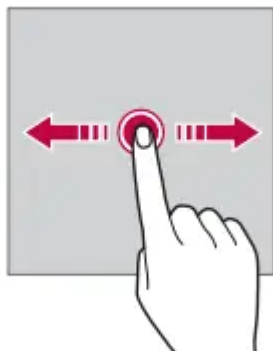
Double-tapping

Tap twice quickly to zoom in or out on a web page or map



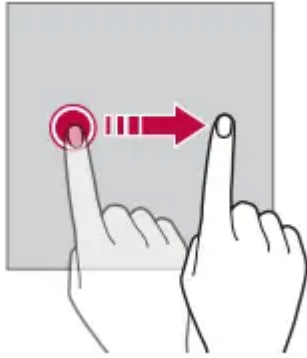
Dragging

Touch and hold an item, such as an app or widget, then move your finger to another location in a controlled motion. You can use this gesture to move an item.



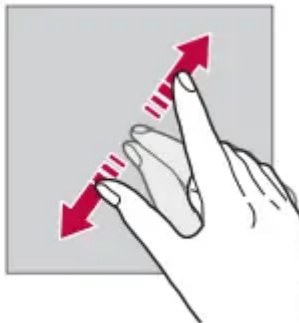
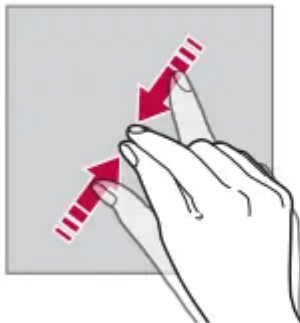
Swiping

Touch the screen with your finger and move it quickly without pausing. You can use this gesture to scroll through a list, a web page, photos, screens, and more.



Pinching and spreading

Pinch two fingers to zoom out such as on a photo or map. To zoom in, spread your fingers apart.



Do not expose the touch screen to excessive physical shock. You might damage the touch sensor

- A touch screen failure may occur if you use the device near a magnetic, metallic or conductive material.
- If you use the device under bright lights, such as direct sunlight, the screen may not be visible, depending on your position. Use the device in a shady location or a location with an ambient light that is not too bright and bright enough to read books.
- Do not press the screen with excessive force.
- Gently tap with your fingertip on the desired option.
- Touch control may not work properly if you tap while wearing a glove or by using the tip of your fingernail.
- Touch control may not work properly if the screen is moist or wet.
- The touch screen may not function properly if a screen-protective film or accessory purchased from a third party store is attached to the device.
- Displaying a static image for extended periods of time may result in after-images or screen burn-in. Turn off the screen or avoid displaying the same image for a long time when you do not use the device.

Home screen

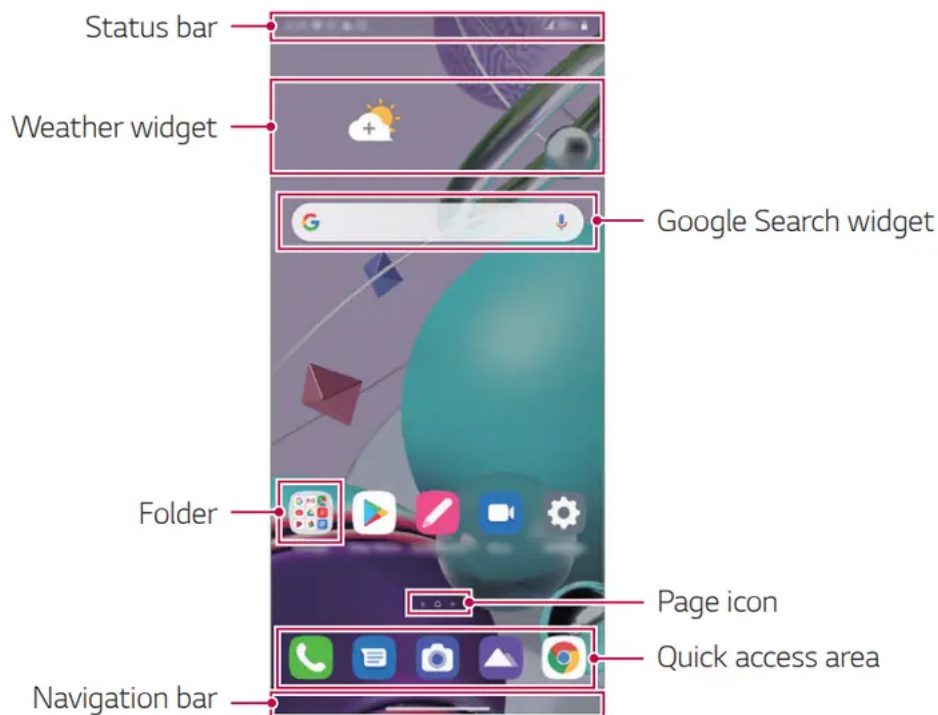
Home screen overview

The Home screen is the starting point for accessing various functions and apps on your device. Swipe up from the bottom edge of any screen to directly go to the Home screen.

You can manage all apps and widgets on the Home screen. Swipe the screen left or right to view all installed apps at a glance.

Home screen layout

You can view all apps and organize widgets and folders on the Home screen.



The Home screen may differ depending on the manufacturer policy, user settings, software version or service provider

- Status bar: View status icons, the time and the battery level.
- Weather widget: View the information of weather and time for a specific area.
- Google Search widget: Type or speak to open Google Search.
- Folder: You can create folders to classify the app based on desired criteria.
- Page icon: Display the total number of Home screen canvases. You can tap the desired page icon to go to the page. The icon reflecting the current canvas will be highlighted.
- Quick access area: Fix main apps at the bottom of the screen so that they can be accessed from any Home screen canvas.

- Navigation bar: Use some gestures to go to the Home screen, previous screen, Overview screen, or quickly switch between apps.

Using Navigation bar

Here is the gestures guide to control the Navigation bar.

- To go to Home screen, swipe up from the bottom edge of the screen.
- To go back to the previous screen, swipe in from the left or right edge of the screen.
- To go to Overview screen, swipe up and hold from the bottom edge of the screen.
- To quickly switch between apps, swipe right at the bottom edge of the screen to go to previously used apps.



Gestures is the default for the Navigation bar. To change it to Buttons only tap Settings → Display → Navigation bar, then select Buttons only

Status icons

When there is a notification for an unread message, calendar event or alarm, the status bar displays the corresponding notification icon. Check your device's status by viewing notification icons displayed on the status bar



	No signal
	Data is being transmitted over the network
	Alarm is set
	Vibrate mode is on
	Bluetooth is on
	Connected to a computer via USB
	Battery level
	Airplane mode is on
	Missed calls
	Wi-Fi is connected
	Mute mode is on
	GPS is on
	Hotspot is on
	No SIM card

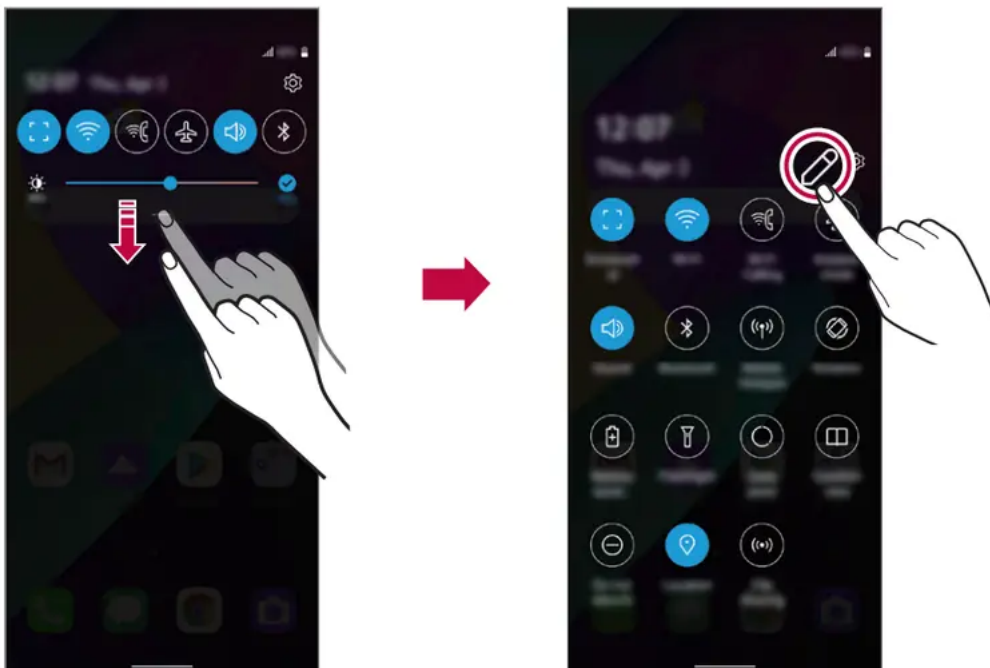
- Some of these icons may appear differently or may not appear at all, depending on the device's status. Refer to the icons according to the actual environment and area in which you are using the device and your service provider.

- Displayed icons may vary, depending on the area or service provider

Notifications panel

You can open the notifications panel by dragging the status bar downward on the main screen.

- You can drag down the notice window or tap  to open the list of quick setting icons.
- You can tap  to add, delete or arrange icons in the notice window.
- If you touch and hold the icon, the settings screen for the corresponding function appears.



You can use the notifications panel even on the lock screen. Drag the notifications panel while the screen is locked to quickly access the desired features.

Switching the screen orientation

You can set the screen orientation to automatically switch according to the device's physical orientation.

On the notification panel, tap Rotation from the quick access icon list. You can also tap Settings on the home screen, tap Display and activate Auto-rotate screen




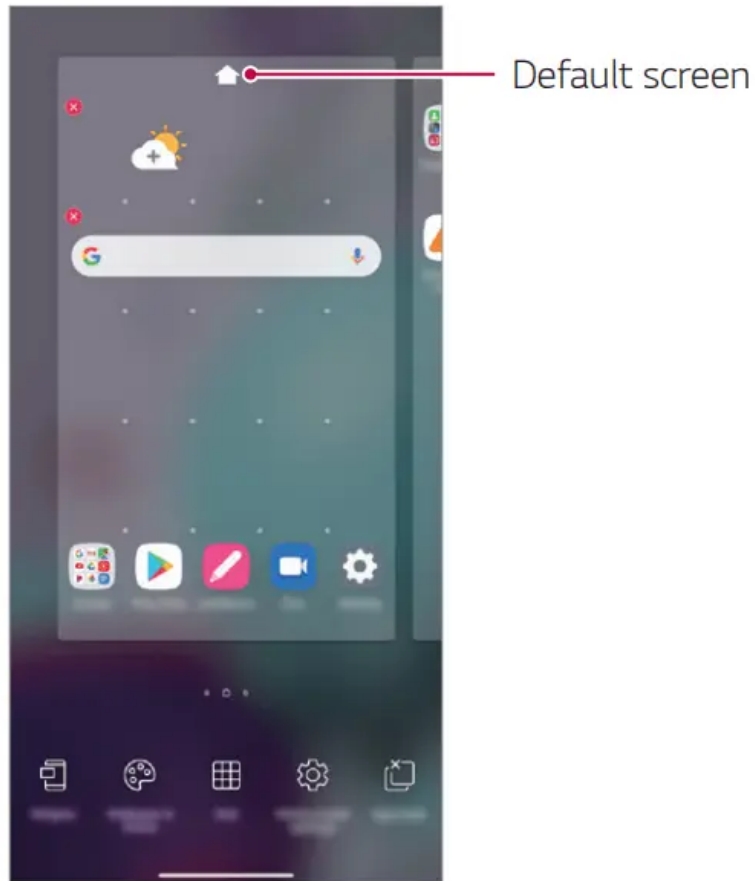
Editing the Home screen

On the Home screen, touch and hold on an empty space, then select the desired action from below.

- To rearrange the Home screen canvases, touch and hold on a canvas, then drag it to a desired location.
- To add a widget to the Home screen, touch and hold on a blank area of the Home screen, then select Widgets.
- To change wallpapers and themes, touch and hold on a blank area of the Home screen, then select Wallpaper & theme.

You can also tap Settings on the home screen and tap Wallpaper & theme, then select desired options from Wallpaper and Theme to apply to the device.

- To change the grid, touch and hold on a blank area of the Home screen, then select Grid. Tap the desired grid, then tap Apply.
- To configure the Home screen settings, touch and hold on a blank area of the Home screen, then select Home screen settings. See Home screen settings for details.
- To view or reinstall the uninstalled apps, touch and hold on a blank area of the Home screen, then select App trash. See App trash for details.
- To change the default screen, touch and hold on a blank area of the Home screen, move to desired screen, tap , then tap the screen once more.

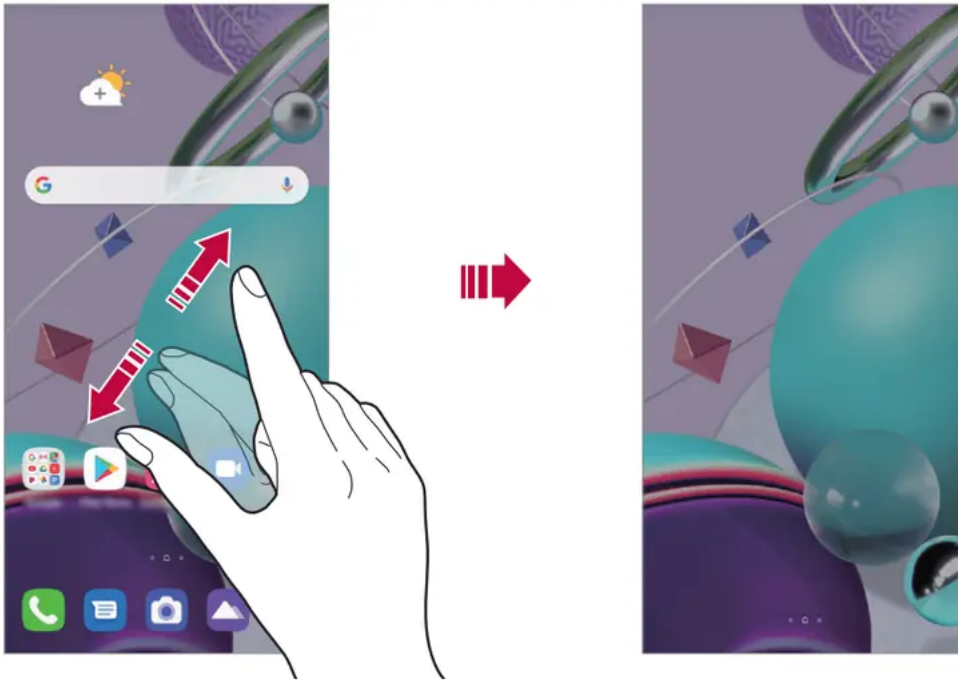


Viewing the background theme

You can view only the background image by hiding the apps and widgets on the Home screen.

Spread two fingers apart on the Home screen.

- To return to the original screen, which displays apps and widgets, pinch your fingers on the Home screen or swipe up from the bottom edge of the screen.



Moving apps on the Home screen

On the Home screen, touch and hold an app, then drag it to a desired location.

- To keep frequently used apps at the bottom of the Home screen, touch and hold an app, then drag it to the quick access area at the bottom.
- To remove an icon from the quick access area, drag the icon to the Home screen.

Using folders from the Home screen


Creating folders

On the Home screen, touch and hold an app, then drag it over another app.

- A new folder is created and the apps are added to the folder

Editing folders

On the Home screen, tap a folder and do one of the following actions.

- To edit the folder name and color, tap the folder name.
- To add apps, touch and hold an app, then drag it over the folder and release it.
- To remove an app from the folder, touch and hold the app and drag it to outside the folder. If the removed app is the only one app that existed in the folder, the folder is removed automatically.
- You can also add or remove apps after tapping  in the folder

You cannot change the folder color while using downloaded theme.

Home screen settings

You can customize the Home screen settings.

1. On the home screen, tap Settings → Display → Home screen.
2. Customize the following settings:
 - Select Home: Select a Home screen mode.
 - Wallpaper: Change the Home screen wallpaper and theme.
 - Icon shape: Choose a desired shape for icons from the options provided.
 - Google feed: Select whether to display Google feed on the screen located left to the main Home screen.
 - Sort apps by: Set how apps are sorted on the Home screen.
 - Hide apps: Select apps you want to hide from the Home screen.
 - Loop Home screen: Enable to allow continuous Home screen scrolling (loop back to the first screen after the last screen).

This function is not available when Google feed is selected for Left Home screen.

- Search: Search by swiping down on the Home screen.
- Home screen lock: Enable to prevent apps and widgets from being rearranged or removed.

Screen lock

Screen lock overview

Your device's screen turns off and locks itself if you press the Power/Lock key. This also happens after the device is left idle for a specified period of time.

If you press the Power/Lock key when a screen lock is not set, the Home screen appears immediately.

To ensure security and prevent unwanted access to your device, set a screen lock.

A screen lock also prevents unnecessary touch input on the device screen and reduces battery consumption. We recommend that you activate the screen lock while not using the device.

Setting a screen lock

There are several options available for configuring the screen lock settings.

1. On the home screen, tap Settings → Lock screen & security → Select screen lock and then select the method you prefer.
2. Customize the following settings:
 - None: Deactivate the screen lock function.
 - Swipe: Swipe on the screen to unlock the screen.
 - Pattern: Draw a pattern to unlock the screen.

- PIN: Enter a numeric password to unlock the screen.
- Password: Enter an alphanumeric password to unlock the screen.
- Fingerprints: Unlock the screen by using your fingerprint.

Customize Lock screen

You can customize lock screen.

1. On the home screen, tap Settings → Lock screen & security → Customize Lock screen.
2. Select a function you want to set.
 - Wallpaper: Allow you to set the background for your Lock screen.
 - Clock: Allow you to set where to position the clock on the Lock screen.
 - Shortcuts: Allow you to choose apps to run on your Lock screen. This setting appears only when a screen lock is set.
 - Contact info for lost phone: Allow you to set text to be displayed on the Lock screen to identify the phone's owner

Secure lock settings

You can set secure lock settings.

1. On the home screen, tap Settings → Lock screen & security → Secure lock settings.
2. Select a function you want to set.
 - Make pattern visible (shown only when Pattern is set as a screen lock): Turn on to make pattern visible.
 - Lock timer: Allows you to set the amount of time before the screen automatically locks after the backlight turns off (time-out due to inactivity).
 - Power key instantly locks: Enable this option to instantly lock the screen when the Power/Lock button is pressed. This setting overrides the Security Lock timer setting.
 - Show lockdown option (shown only when a screen lock is set): Enable this option to display the Lockdown icon when you press and hold the Power/Lock button. Tap the Lockdown icon to turn off Smart Lock, biometric unlocking, and notifications on the lock screen.
 - Smart Lock: Allows you to set trusted devices, places, voice, and/or on-body detection that will allow your phone to remain unlocked.

Available menu options may vary depending on the lock screen method selected.

KnockON

You can turn the screen on or off by double-tapping the screen. On the home screen, tap Settings → Extensions → KnockON to enable the option.

- This option is available only on the Home screen provided by LG. It may not function properly on a custom launcher or on the Home screen installed by the user.
- When tapping the screen, use your fingertip. Do not use a fingernail.
- To use the KnockON feature, make sure that the proximity/light sensor is not blocked by a sticker or any other foreign substance.

Turning the screen on

Double-tap the middle of the screen.

- Tapping the top or bottom of the screen may decrease the recognition rate.

Turning the screen off

Double-tap on an empty space on the Home screen and Lock screen. You can also double-tap an empty space on the status bar

Memory card encryption

You can encrypt and protect data saved on the memory card. The encrypted data in the memory card cannot be accessed from another device.

1. On the home screen, tap Settings → Lock screen & security → Encryption & credentials Encrypt SD card.
2. Read the on-screen overview of memory card encryption and then tap Continue to continue.
3. Select an option and tap Encrypt now.
 - New data encryption: Encrypt only data that is saved on the memory card after encryption.
 - Full encryption: Encrypt all the data currently saved on the memory card.
 - Exclude media files: Encrypt all files, except for media files such as music, photos and videos.

NOTE:

- Once memory card encryption starts, some functions are not available.
- If the device is turned off while encryption is underway, the encryption process will fail, and some data may be damaged. Therefore, be sure to check if the battery level is sufficient before starting encryption.
- Encrypted files are accessible only from the device where the files were encrypted.
- The encrypted memory card cannot be used on another device. To use the encrypted memory card on another mobile device, format the card.

- You can activate memory card encryption even when no memory card is installed into the device. Any memory card that is installed after encryption will automatically be encrypted.

Taking screenshots

You can take screenshots of the current screen you are viewing.

Via a shortcut

Press and hold the Power/Lock key and the Volume Down key at the same time for at least two seconds.

- Screenshots can be viewed from the Screenshots folder in Gallery.

Via Screenshot

On the screen where you want to take a screenshot, drag the status bar downwards, then tap



Do not disturb

You can limit or mute notifications to avoid disturbances for a specific period of time.



On the home screen, tap Settings → Sound → Do not disturb.

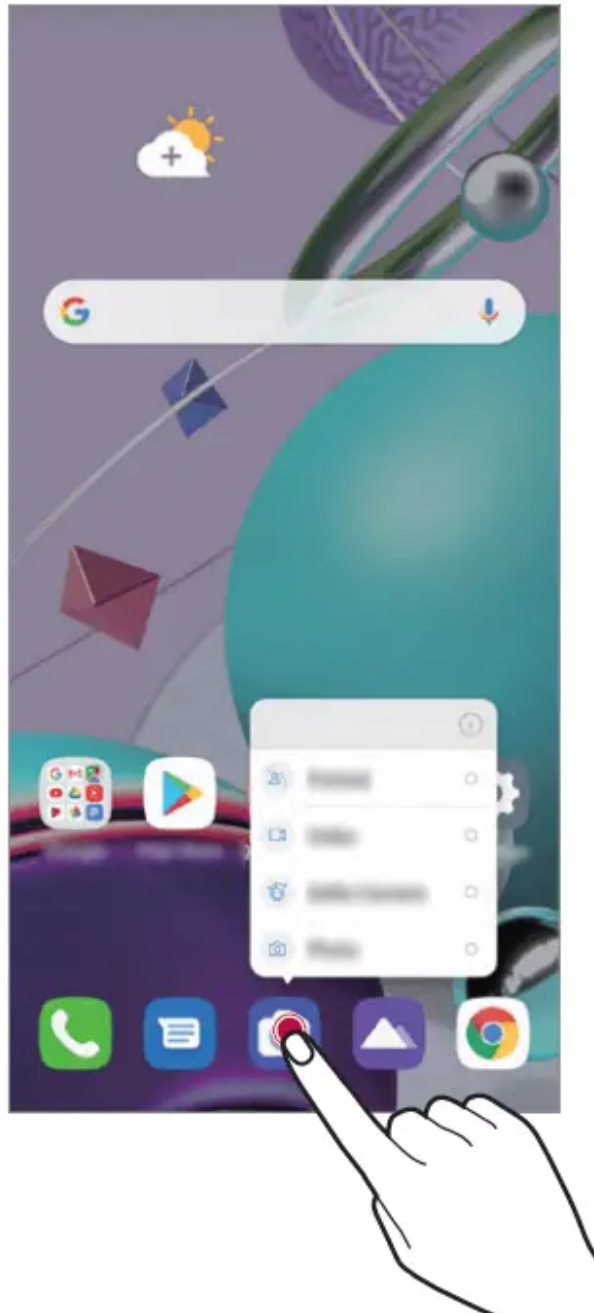
- Mode: Select a desired mode.
 - Priority only: Receive sound or vibrate notifications for the selected apps. Even when Priority only is turned on, alarms still sound.
 - Total silence: Disable both the sound and vibration.
- Select priorities: Receive alarms and the notifications for the selected apps.
 - Calls from: Set up a range of notifications when receiving a call.
 - Repeated calls: Second call from same caller within 15 min is not silenced.
 - Messages from: Set up a range of notifications when receiving a message.
- Use Do not disturb: Turn on the Do not disturb feature.
- SCHEDULE: Set the schedule for which you want to turn on the Do not disturb feature.
- Help: View the help for Do not disturb.

Useful Apps

App Shortcuts

On the Home screen, touch and hold an app icon such as Phone, Messages, Camera, Gallery and Settings to display a quick access menu. Use apps more easily through App Shortcuts.

- Tap  to set a widget for the app.
- Tap  to check the app information.






This feature is available only on some apps.

Phone

Voice call

Make a phone call by using one of the available methods, such as manually entering a phone number and making a call from the contact list or the list of recent calls.



Making a call from the keypad

1. On the home screen, tap  → Dial.
2. Make a call by using a method of your choice:
 - Enter a phone number and tap .
 - Touch and hold a speed dial number.
 - Search for a contact by tapping the initial letter of a contact name in the contact list, and then tap .

To enter "+" when making an international call, touch and hold number 0.

See Adding contacts for details on how to add phone numbers to the speed dial list.

Making Calls from Contacts

1. On the home screen, tap  → Contacts.
2. After selecting the number you want to call from the list of contacts, tap .


Answering/Ending a call

To answer a call, drag  on the incoming call screen.

- When the stereo headset is connected, you can make calls by using the call/end button on the headset.
- To end a call with the Power key, tap Settings → Network & internet → Call Answer and end calls, then activate End call with the Power key.

Rejecting a call


To reject an incoming call, drag  across the incoming call screen.


- To send a rejection message, drag the rejection message option  across the screen.
- To add or edit a rejection message, tap Settings → Network & internet → Call → Call blocking & Decline with message → Decline with message.
- When a call is coming in, press the Volume Up, Volume Down or Power/ Lock key to mute ringtone or vibration, or to hold the call.

Checking an incoming call while using an app

When a call comes in while using an app, a pop-up notification can be displayed at the top of the screen. You can receive the call, reject the call, or send message from the pop-up screen.



Viewing missed calls

If there is a missed call, the status bar at the top of the screen displays .

To view missed call details, drag the status bar downwards. You can also tap  on the home screen and tap Recent.

Functions accessible during a call

During a call, you can access a variety of functions by tapping the on-screen buttons:

- Add call: Allows you to add a call to the current conversation.
- Contacts: Allows access to your contacts list.
- Dialpad: Display or hide the dial pad.
- Speaker: Turn on the speakerphone function.
- Mute: Block your voice so that the other party cannot hear your voice.
- Bluetooth: Switch the call to a Bluetooth device that is paired and connected.
-  : End a call.
-  : Access more options during a call.


Some functions are not available during a video call.

- Available setting items may vary depending on the area or service provider

Camera

You can use the Camera app to take and share photos and videos.


Starting the camera

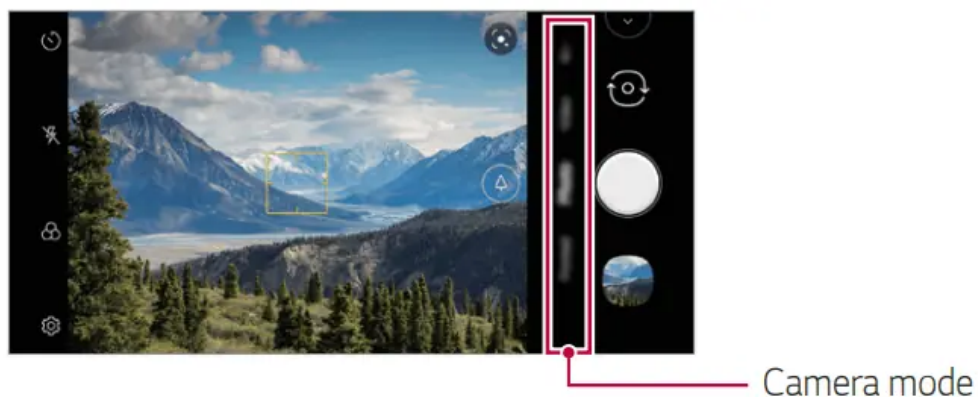
On the home screen, tap .

- Before taking a photo or recording a video, wipe the camera lens with a soft cloth.
- Be careful not to stain the camera lens with your fingers or other foreign substance.
- Images included in this user guide may be different from the actual device.
- Photos and videos can be viewed or edited in Gallery. See Gallery overview for details.

Changing the camera mode


You can select a camera mode that suits your environment to take a photo or record a video easily and conveniently.



On the home screen, tap , then swipe left or right over the camera mode area to select the desired mode.

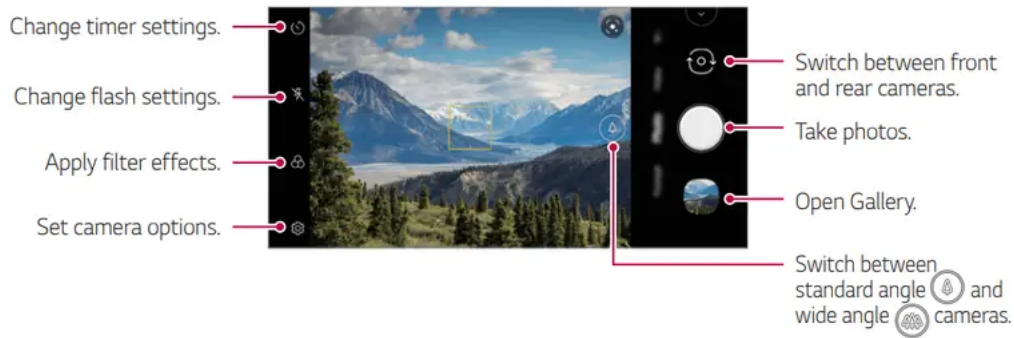


Auto mode

You can take photos or record videos by selecting a variety of camera options.

1. On the home screen, tap .

2. To take a photo, tap Photo, and tap . To record a video, tap Video, and tap .



Recording a video

1. Select a camera mode and tap the subject to focus the camera on.

2. Tap to start recording.

◦ To take a photo while recording a video, tap .

◦ To pause the video recording, tap . To resume the video recording, tap



◦ While recording a video, you may spread or pinch two fingers to zoom in or out.

◦ While recording a video, you may tap the desired area to adjust the brightness.

3. Tap to end the video recording.

Various camera modes

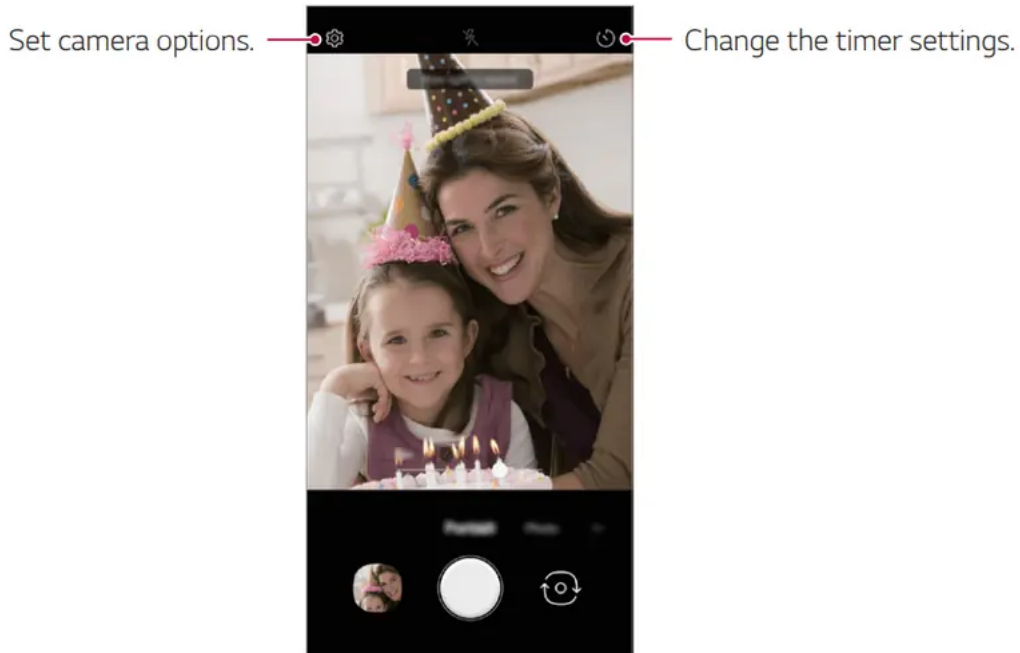
Portrait

You can take photos or videos that make the subject more distinct and stand out by blurring the background.

1. On the home screen, tap , then select Portrait by swiping camera modes.

2. When Portrait is available. appears on the screen, tap to take a photo.

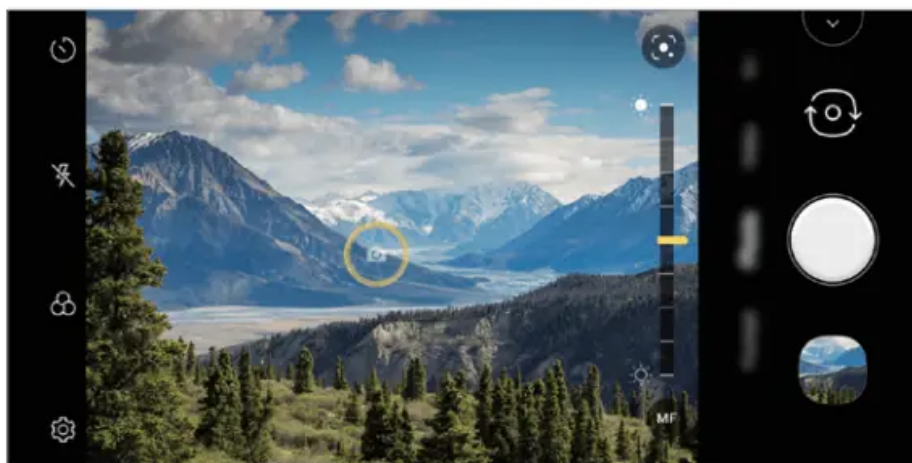
- The Portrait feature may not work if the camera cannot recognize the subject.
- While taking a photo, keep the distance to your subject to 1.3 ~ 5 feet.
- This feature is not available if the surroundings are too dark.



Other useful features


Auto-Exposure/Auto-Focus lock

You can fix the current exposure level and focus position by touching and holding the screen. To turn off the feature, tap a blank area on the screen.



This feature is available only in specific modes.

Switching between cameras

You can switch between the front and rear cameras to suit your environment. On the camera screen, tap  to switch between the front and rear cameras.

or

On the camera screen, swipe the screen up or down.

Use the front camera to take selfies. See Selfie shot for details.

Selfie shot

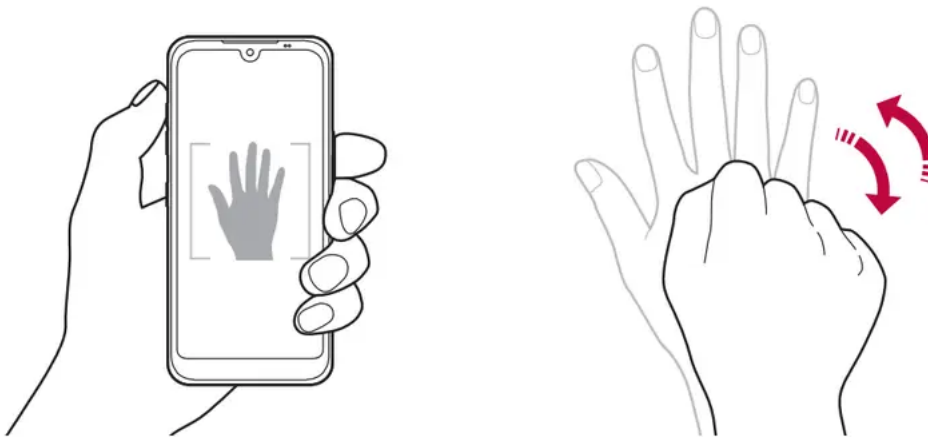
You can use the front camera to view your face on the screen and take selfies.


Gesture shot

You can take selfies by using gestures. Show your palm to the front camera and then clench your fist.

You can also clench your fist and then open it towards the front camera.

- In three seconds, a photo is taken.

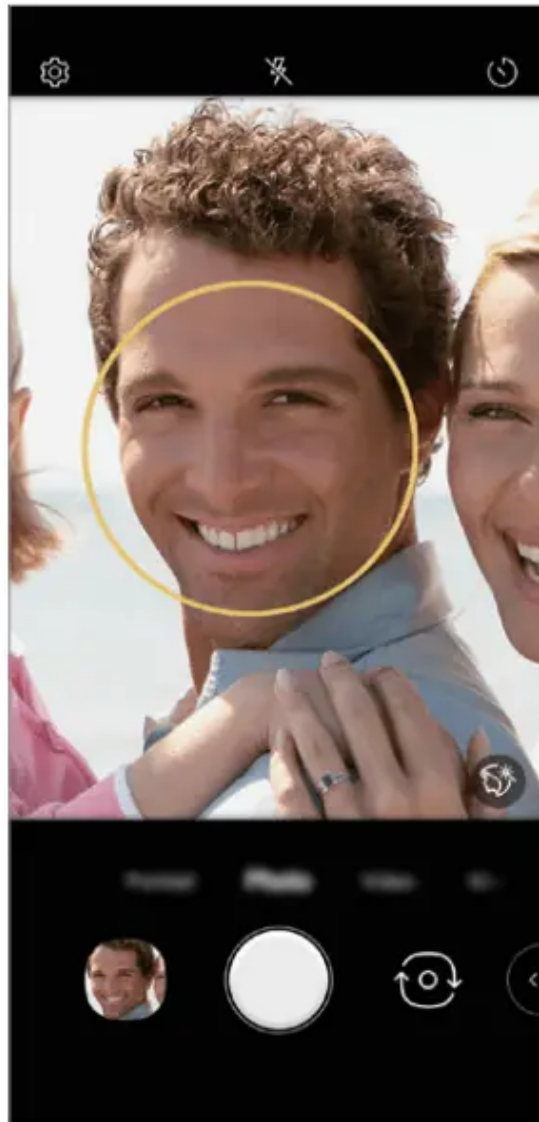



- To use this feature, switch to the front camera mode, then tap  → Selfie shot → Gesture shot.
- Make sure that your palm and fist are within the reference line so that the camera can detect them.
- This feature may not be available while using some of the camera features.

Auto shot

You can use the face detection feature to take selfies easily and conveniently. You can set the device so that, when you look at the screen, the front camera detects your face and takes a selfie automatically.

- The white colored guide frame appears when the front camera detects your face. If the subject within the guide frame stops moving, the guide frame color turns yellow, then the camera takes a photo.




Tap  → Selfie shot → Auto shot to enable the Auto shot feature.

Gallery

Gallery overview

You can view and manage photos and videos saved on your device.

1. On the home screen, tap :
 - Saved photos and videos are displayed by folder.
2. Tap a folder and select a file.
 - View the selected file in full-screen mode.
 - While viewing a photo, swipe left or right to view the previous or next photo.
 - While viewing a video, swipe left or right to rewind or fast-forward the video.

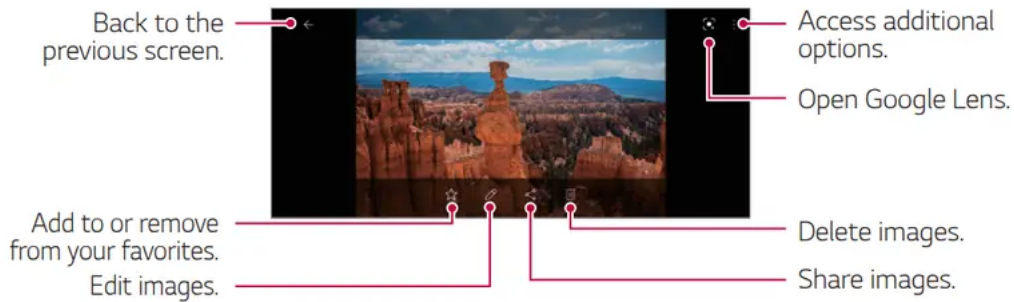
- If you save the location information or use a scene mode when shooting, a sub folder is generated for each video.

NOTE:

- Some file formats may not be supported, depending on the installed software.
- Some files may not be opened due to encoding.
- Files that exceed the size limit may cause an error

Viewing photos

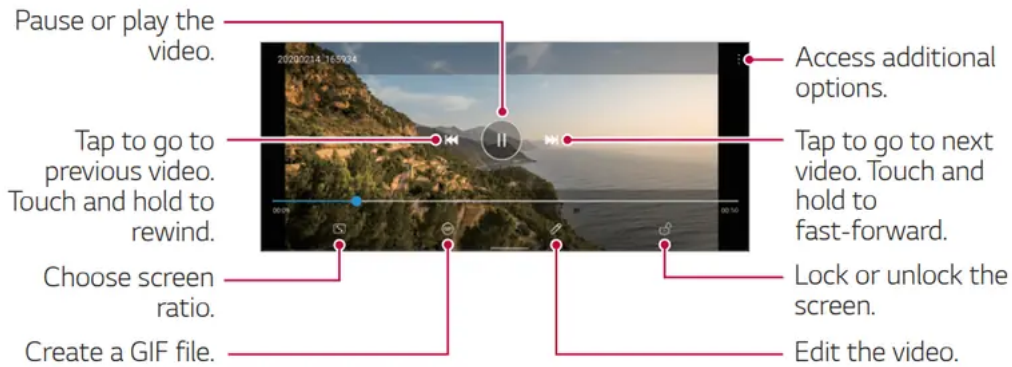
You can view photos saved in Gallery.



To display the menu items, gently tap the screen. To hide the menu items, tap the screen again.


Playing a video

You can view videos saved in Gallery. The following options are available while playing a video.



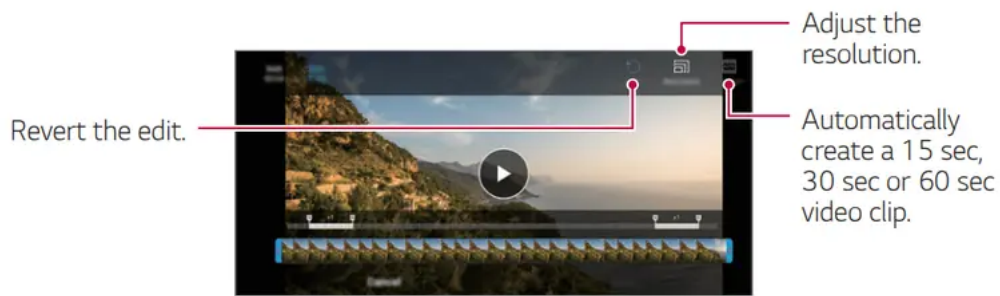
- To adjust the sound volume, drag the right side of the video screen up or down.
- To adjust the screen brightness, drag the left side of the screen up or down.
- Dragging the screen to the left while playing a video allows you to rewind (REW) and dragging to the right allows you to fast forward (FF)

Editing videos

1. While viewing a video, tap  .




2. Use a variety of effects and edit tools to edit the video.

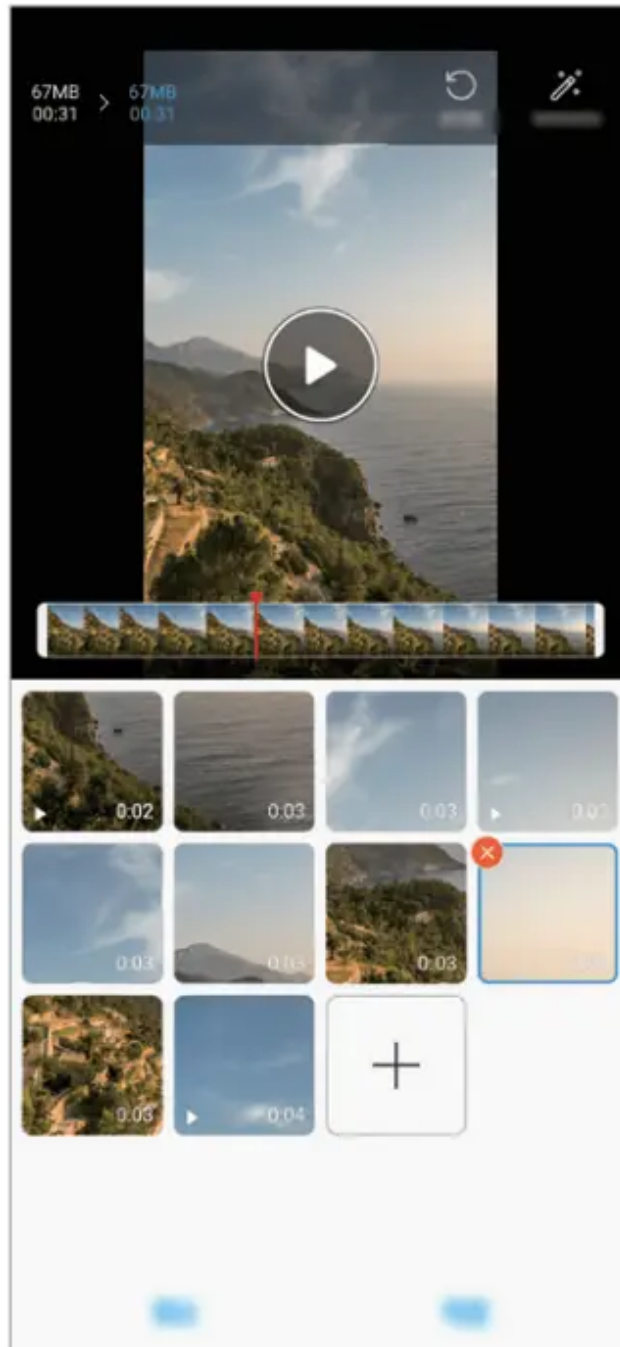


3, Tap Save to save changes.


Creating a movie

You can create a new movie by putting images and videos together.

1.  → Create movie.
2. Select images or videos for your movie and tap Next.
3. Edit the selected images and videos and then tap Save.




Deleting files

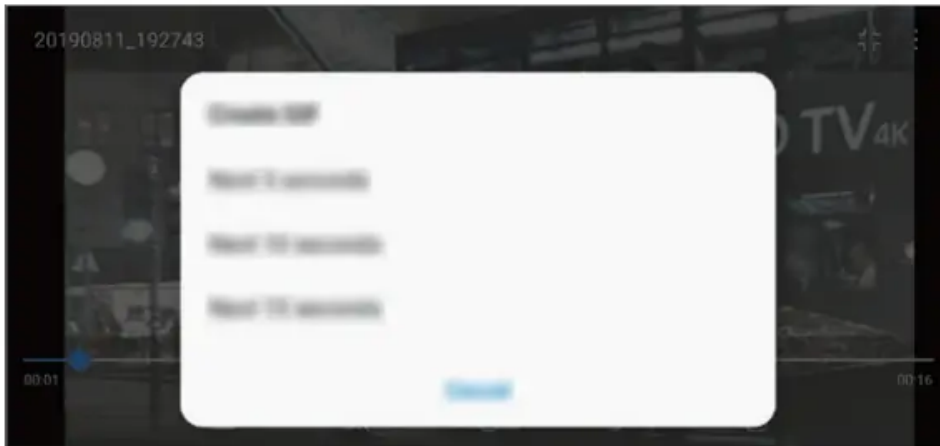
You can select images or videos to delete from your video by tapping  at the top left corner of its thumbnail.

Creating a GIF

You can easily make a GIF file using recorded video.

Creating video

1. At the desired starting point while watching a video, tap  .
2. Select the length of the GIF you want to create.
 - GIF is generated for the time selected from the current time.
 - For videos less than 5 seconds, GIF images are automatically generated for the remaining time.



QuickMemo+

QuickMemo+ overview





You can make creative notes by using a variety of options on this advanced notepad feature, such as image edits and screenshots, which are not supported by the conventional notepad.


This device supports the Active Pen AES2.0 (Active Electrostatic)


Creating a note


1. On the home screen, tap QuickMemo+.


2. Tap  to create a note.



-  : Save a note.
-  : Undo the previous edit.
-  : Redo the recently deleted edits.
-  : Enter a note by using the keypad.

◦  : Save your favorite pen types.

◦  : Write notes by hand.

◦  : Erase handwritten notes.

◦  : Access additional options.

▪  Tap  to lock the navigation bar while making a note.


3. Tap  to save the note.


Audio Recorder

You can record and save your voice or others' voices from important events. Recorded voice files can be played back or shared.


1. On the home screen, tap Essentials Audio Recorder.

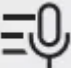
2. Tap  to start recording.

◦ To pause recording, tap .

3. Tap  to end the recording.

◦ The file is saved automatically and the Recordings screen appears.

4. Tap  to play the recorded voice

Tap  to view the recorded files. You can play a recorded voice file from the list.

Smart cleaning

You can delete temporary files or apps that are no longer used.

1. On the home screen, tap Management → Smart cleaning.

2. On the Smart cleaning screen, you can access Optimize phone, Battery usage, Battery saver, and Test hardware.

Appendix

Anti-Theft Guide

You can set up your device to prevent other people from using it if it's been reset to factory settings without your permission. For example, if your device is lost, stolen, or wiped, only someone with your Google account or screen lock information can use the device. All you need to make sure your device is protected is:

- Set a screen lock: If your device is lost or stolen but you have a screen lock set, the device can't be erased using the Settings menu unless your screen is unlocked.
- Add your Google account on your device: If your device is wiped but you have your Google account on it, the device can't finish the setup process until your Google account information is entered again.

After your device is protected, you'll need to either unlock your screen or enter your Google account password if you need to do a factory reset. This ensures that you or someone you trust is doing the reset.

- Do not forget your Google account and password you had added to your device prior to performing a factory reset. If you can't provide the account information during the setup process, you won't be able to use the device at all after performing the factory reset.

Troubleshooting

Device overheats

Device overheats while it is in use.

In the following cases, the battery consumption increases and the device may overheat:

- When you turn on the device for the first time or back up the data
- When running multiple apps simultaneously
 - When multiple apps are running in the background
 - When downloading large files while making a video call or recording a video
- When using features that require high power
 - When watching video streaming on the internet, or recording a long video
 - When playing high-end games for long time
 - When using the device with maximum screen brightness for a long time
- When using lots of mobile data
 - When using Wi-Fi hotspot or tethering
 - When synchronizing the data for multiple accounts simultaneously

- Other cases
 - When roaming overseas
 - When using the device in areas with weak signals or no reception
 - When charging the device with the charger/USB cable port that is damaged or contaminated with foreign substance

Some of the above cases may not apply depending on the features and apps.

Device overheats while charging.

- The device and the charger may become hot while charging. During wireless charging or fast charging (if supported), the device may become even hotter. If the battery temperature rises above a certain level, the device may stop charging.
 - Disconnect the charger from the device and close any running apps. Let the device cool down before charging the device or running an app again.
 - Stop charging if the charger/USB cable port at the lower part of the device overheats, and contact the LG Authorized Service Center.

How to solve overheating of the device

- Close any running apps or features, and let the device cool down.
- Always update the software to the latest version.
- Turn off Wi-Fi, Bluetooth, or GPS features while not using them.
- Close apps you don't use.
- If you are using the device with maximum screen brightness, decrease the brightness.
- If the device overheats for a prolonged period, stop using it for a while. If the device continues to overheat, contact the LG Authorized Service Center

Usage limitations when the device overheats

If the device overheats while using it or charging, some features, apps, or even the device may be turned off. This is a normal operation for the devices that support this feature.

- If the device temperature rises above a certain level, a warning message appears.
 - If you play high-end games, record videos, or upload large files, the device may overheat for a prolonged period. In this case, a warning message may appear to notify automatic shutdown. Turn off the device or close any running apps or features, and let the device cool down.
- The screen brightness and the operating speed may be limited to cool down the device. Any running apps or features may slow down or stop. The device may stop charging.

SIM card error

- Make sure the SIM card is correctly inserted.



No network connection or dropped network

- Signal is weak. Move to a window or an open area. You are outside the carrier network area. Move and check the network.

Calls are not available

- New network not authorized.
- Make sure you have not set call barring for the incoming number. Make sure you have not set call barring for the number you are dialing

Device cannot be turned on

- When the battery is completely discharged, your device will not turn on. Fully charge the battery before turning on the device.

Charging error

- Make sure the device is charging at a moderate temperature.
- Check the charger and its connection to the device.
- Use only in-box accessories which are authorized by LG.

The battery depletes faster than when first purchased

- When you expose the device or the battery to very cold or hot temperatures, the battery life may be reduced.
- Battery consumption will increase when you use certain features or apps, such as GPS, games or the Internet.
- The battery is consumable and the battery life will get shorter over time.

Error messages appear when launching the camera

- Charge the battery.
- Free some memory by transferring files to a computer or deleting files from your device.
- Restart the device.
- If you are still having trouble with the camera app after trying these tips, contact the LG Authorized Service Center

The photo quality is poor

- The quality of your photos may vary, depending on the surroundings and the photography techniques you use.
- When you take photos and videos, keep in mind that the image quality with standard angle is better than that with wide-angle.
- If you take photos in dark areas, at night or indoors, image noise may occur or images may be out of focus. If you have any problems, reset the options.

The touch screen responds slowly or incorrectly

- If you attach a screen protector or optional accessories to the touch screen, the touch screen may not function properly.
- If you are wearing gloves, if your hands are not clean while touching the touch screen or if you tap the screen with sharp objects or your fingertips, the touch screen may malfunction.
- The touch screen may malfunction in humid conditions or when exposed to water.
- Restart your device to clear any temporary software bugs. If the touch screen is scratched or damaged, contact the LG Authorized Service Center.

Hangs or freezes

Restart the device

- If your device freezes or hangs, you may need to close apps or turn the device off and then on again.

Perform a boot-up

- Press and hold the Power/Lock key and the Volume Down key until the device restarts.

Reset the device

- If the methods above do not solve your problem, perform a factory data reset.
- On the settings screen, tap **System** → **Restart & reset** → **Factory data reset**.
 - Reset all settings for the device and delete data. Before performing the factory data reset, remember to make backup copies of all important data stored in the device.
 - If you have registered a Google account to the device, you must sign in to the same Google account after resetting the device.

Bluetooth device is not located

- Make sure the Bluetooth wireless feature is activated on your device.
- Make sure the Bluetooth wireless feature is activated on the device you wish to connect to.
- Make sure your device and the other Bluetooth device are within the maximum Bluetooth range (10 m).
- If the tips above do not solve your problem, contact the LG Authorized Service Center

A connection is not established when you connect the device to a computer

- Make sure the USB cable you are using is compatible with your device.
- Make sure you have the proper driver installed and updated on your computer

Downloaded application causes a lot of errors

- Application has problems.
- Remove and reinstall the application.

Warning

This content is compiled from multiple sources and is provided for reference purposes only. It may not be complete or fully applicable to all situations. If you are unable to resolve your issue, please contact the product manufacturer or an authorized service provider for official support.