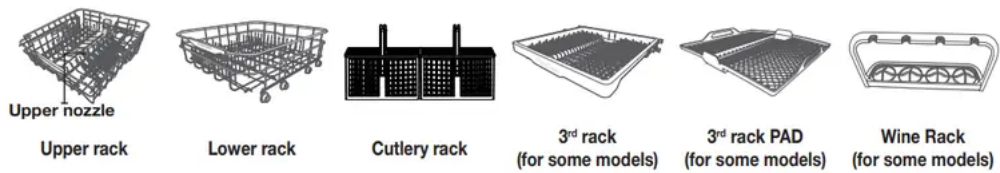
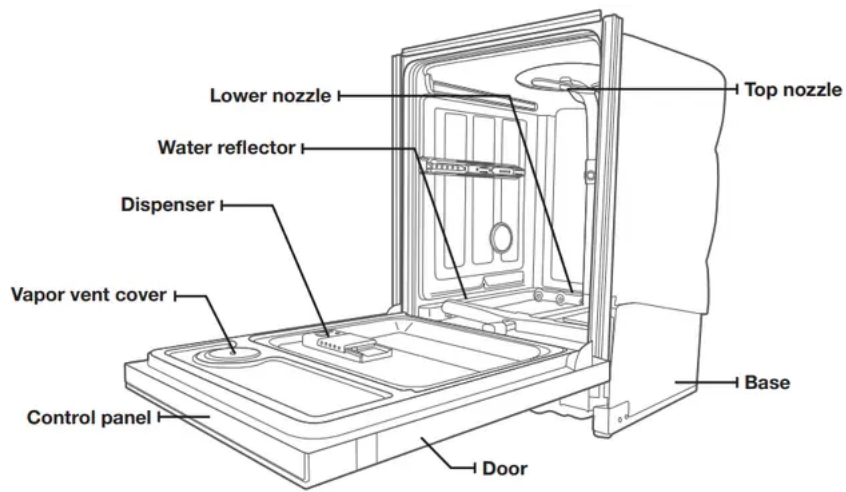
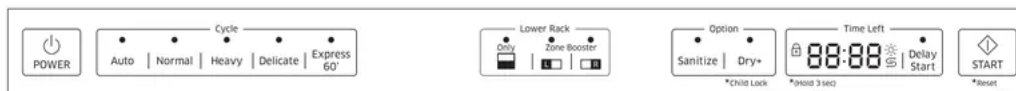



CHECKING PARTS



using your dishwasher

CONTROL PANEL



<p>Power</p>	<p>When you press the Power button, the light of the most recently finished cycle turns on. When the cycle you selected has finished, all other indicator lights are turned off and the "End" light is illuminated for some minutes. Then, the Power turns off automatically.</p>
<p>Cycle Selector</p>	<p>Select the appropriate wash cycle depending on the soil level of your dishes. After you select a cycle, the Cycle On light for that cycle lights.</p> <p>Also, the Upper and Lower zone lights turn on by default.</p>
<p>Lower (for some models) / Lower Rack - Only (for some models)</p>	<p>When you select Lower (Lower Rack - Only), only the lower rack nozzle is activated. The upper nozzle will not operate.</p> <p>Use this feature to wash a small load of dishes or glasses placed in the lower rack</p> <p>Selecting Lower (Lower Rack - Only) reduces both the cycle time and the amount of electricity consumed.</p> <p> If you want to wash heavily soiled items such as pots and pans, select the Zone Booster option. (This option consumes slightly more water and energy.)</p> <p>Select Zone Booster L option: Applies intensive washing power to the left part of the lower rack.</p> <p>Select Zone Booster R option: Applies intensive washing power to the right part of the lower rack.</p> <p>Select both Zone Booster L & R options: Applies intensive washing power to the whole lower rack.</p>

<p>Sanitize</p>	<p>With the Sanitize option selected, the water temperature is increased to 162 °F (72 °C) in the final rinse cycle for high temperature sanitization.</p> <p>If you select the Sanitize option, the "Sanitize" lamp blinks when the water temperature reaches the sanitary temperature (over 155 °F (68 °C)), and then remains illuminated until the Sanitize option ends. When you open the door or press the Power button, the "Sanitize" lamp turns off .</p> <p>The cycle that is NSF certified is the Normal Cycle with the Sanitize option selected.</p>
<p>Dry+ / Child Lock</p>	<p>Use this option when you want to dry your dishes more completely.</p> <p>The temperature rises to 162 °F (72 °C) in the final rinse cycle and dry time is increased.</p> <p>If you select the this option, electricity consumption is increased.</p> <p>The next time you use the dishwasher, the Dry+ option will be selected automatically and applied to the next cycle. You can turn off the Dry+ option by pressing the Dry+ button.</p> <p>*Child Lock : This option allows you to lock the buttons on the control panel - except the Power button - so children cannot accidentally start the dishwasher by pressing the buttons on the panel. Only the Power button remains active.</p> <p>To lock or unlock the buttons on the control panel, press and hold the Dry+/Child Lock button for three (3) seconds.</p> <ul style="list-style-type: none"> - When the Power is On : Press and hold the "Dry+/Child Lock" button for three (3) seconds. - When the Power is Off : Push the Power button first, and then press and hold the "Dry+/Child Lock" button for three (3) seconds. - Child Lock remains active until you turn it off . You cannot select cycles or options or start the dishwasher when Child Lock is on.
<p>Display</p>	<p>Displays cycle time and remaining hours and minutes, Delay Start hours, and Information codes.</p>



If a problem occurs during operation, an information code appears with a warning sound.

Refer to the information codes page.



Child Lock indicator

- Turns on if the Child Lock is set (or the dishwasher is in the standby or pause modes).
- Turns off while the dishwasher is operating.
- When Child Lock is on, the Child Lock indicator blinks for several seconds if any button except the Power button is pressed.



Self Clean indicator (for some models)

- Turns on when the Self Clean option is enabled (or the dishwasher is in the standby or pause modes), but turns off while the dishwasher is operating.
- Blinks for 5 seconds every 20 to 22 cycles.
- The cycle counter disappears when the Self Clean operation is complete or when the dishwasher reaches the 23rd cycle without the Self Clean cycle being used. (The Reset or Self Clean operation is not counted by the cycle counter.)



Rinse Refill indicator

- Turns on if the dishwasher runs out of rinse aid (or the dishwasher is in the standby or pause modes).
- Turns off while the dishwasher is operating.



Lack of salt indicator (*applicable models only)

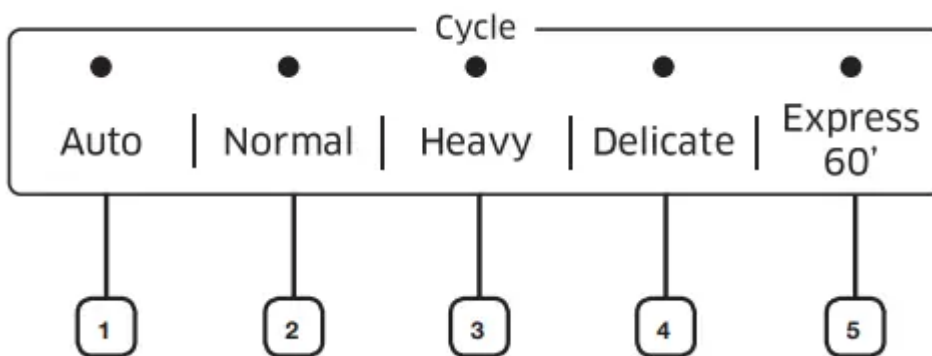
- Turns on when the water softener runs out of salt. (or the dishwasher is in the standby or pause modes.)
- Turns off while the dishwasher is operating.

Delay Start

Delay a cycle for up to 24 hours in one-hour increments. To increase the delay start time, press or hold the Delay Start

	<p>button. The hour displayed indicates the time at which the wash will be started.</p> <ul style="list-style-type: none"> - After setting the delay time, press the Start button, and then close the door to start the cycle. - If you want to change the delay time once the dishwasher has started, press the Reset button and turn off the dishwasher. Then, turn on the dishwasher again and select a new cycle with a new delay setting.
<p>Start</p>	<p>To start a cycle, press the Start button before closing the door.</p> <p>*Reset : To cancel a currently running cycle and drain the dishwasher, press and hold the Start button for three (3) seconds.</p> <p>Once the dishwasher is reset, select a cycle and option, and then press Start to restart the dishwasher.</p>

CYCLE SELECTOR



1 Auto	This cycle detects the level of soil and automatically initiates the optimal cycle after a few minutes of operation.
2 Normal	Use this cycle for normally soiled dishes. The energy-usage label is based on this cycle.
3 Heavy	Use this cycle for heavily soiled dishes.
4 Delicate	Use this cycle for soiled, fragile items such as fine glassware and crystal glass (wine glass). Do not use this cycle for other glassware because clouding or etching may occur. The Zone Booster, Dry+, or Sanitize option is not available with this cycle.
5 Express 60'	Use this cycle when you need to wash dishes quickly. It takes about 1 hour. You cannot select the Speed Booster or Zone Booster option if you select this cycle.

BASIC GUIDELINES

1. Open the door and load your dishes (see page 17 ~ 21).
 - Place dishes into the upper and lower racks, unless you have selected the Upper or Lower (Lower Rack - Only) option.
 - Remove any food remains from the dishes before placing them in the rack(s).
 - After placing the dishes into the racks, turn the upper nozzles to make sure none of the dishes will block nozzle rotation.
 - Make sure the dishes will not prevent the detergent dispenser from opening.
2. Add detergent to the dispenser (see page 22).
 - Make sure to use only automatic dishwasher detergent.
 - Refer to "Using detergent" on how to add detergent.
3. Press the Power button.
 - When you press the Power button, the cycle light of the most recently finished cycle lights up.
 - If "Rinse Refill" Indicator is illuminated, you should refill the rinse aid dispenser to improve washing and drying performance.
4. Select an appropriate cleaning cycle depending on the soil level of the dishes. (see pages 12 and 27).

- Press the appropriate Cycle button.
- When you press a Cycle button, the cycle indicator light is illuminated.
- For information about selecting a cycle according to the soil level of the dishes, see "Cycle selector".

5. Press the Start button, and then close the door.

- Push the racks back so that they are in place, and then press the Start button and close the door.
- Make sure to close the door firmly. If the door is slightly ajar, the selected cycle will not start automatically.
- The dishwasher will start draining after a few seconds, and then start the cycle you selected.

6. When the wash cycle is completed.

- The "End" light illuminates and the dishwasher sounds a chime.
- The power is automatically turned off after a few minutes.

Touch Controls

Touch controls allow you to operate the dishwasher easily.

- They are convenient to operate, requiring only a soft touch.
- Have a simple and stylish design.
- Are easy to clean.

If you have children or you want to clean the Control Interface, we recommend activating the Child Lock feature to lock the control buttons.

- Children will not be able to accidentally start the dishwasher by touching the controls with this option selected.
- If a cycle is running, the buttons will not respond. (except the Power button and Child Lock & Reset options)
- If dishwasher is off , only the Power button responds.

Delay Start

When you select the Delay Start option, your dishwasher will begin the selected cycle when the delay time expires.

The Water Reflector Interference Alarm:

- The water reflector interference feature automatically detects obstacles in the tub. If it detects an obstacle, the display blinks and the dishwasher chimes for several minutes. If an obstacle is detected at the end a cycle, End blinks for several minutes.

- Remove any obstacles in the bottom of the dishwasher.

Setting Mode

The Setting Mode lets you change the dishwasher's sound setting and LED brightness setting. To enter the Setting mode, press the Delay Start + Sanitize buttons for 3 seconds while the dishwasher is on. Press the Sanitize button to select a sub-setting menu and press the Delay Start button to change a setting.

- Sound Setting: Press the Sanitize button until "S on" or "SoFF" is displayed. To change the setting, press the Delay Start button. "SoFF" means that the sound is off for all cycles. The dishwasher maintains the Sound Setting you have selected until you change it.
- Pocket LED Brightness Setting: Press the Sanitize button until "B0 ~ B5" is displayed. The higher the number, the brighter the LEDs. To change the setting on an DW80J994 Series / DW80J755 Series dishwasher, press the Delay Start button.

cleaning and maintaining your dishwasher

CLEANING THE EXTERIOR

It's best to clean spills on the outside of your dishwasher as they occur. Use a soft, damp cloth on the control panel to gently wipe away spills and dust. Do not use benzene, wax, thinner, chlorine bleach, or alcohol. These materials may discolor the door panel and other outer surfaces and cause stains. Do not clean the dishwasher by sprinkling water over it and avoid letting water come into contact with any of the electrical parts.

CLEANING THE INTERIOR

Clean the interior of your dishwasher periodically to remove any dirt or food particles. Wipe the inside of the dishwasher and the inner part of the door with a wet dishcloth. We recommend filling the detergent dispenser with dishwasher soap, and then running the dishwasher empty periodically using the Self Clean option. To keep the cutlery pad clean, turn it over. This will keep your dishwasher clean.

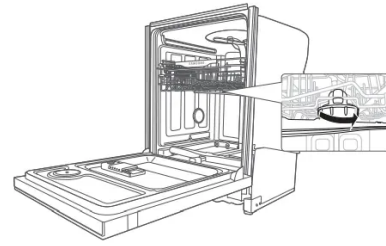
If white spots and odor are still present in your dishwasher, run the Self Clean option with the dishwasher empty and without detergent until it flushes. Then, interrupt the cycle and put an 8 ounce cup of white vinegar into the lower basket. Close the dishwasher and let the cycle finish.

CLEANING THE NOZZLES

If your dishwasher does not seem to be cleaning adequately or the nozzles seem clogged, you can clean each of the nozzles. When removing the nozzles, take care as they may break.

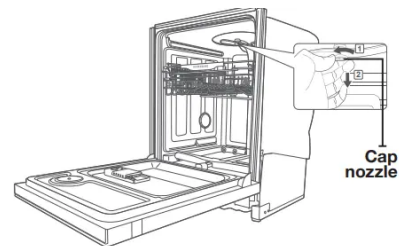
Upper nozzle

1. Pull the upper rack towards the front
2. Check whether the nozzle holes are clogged by food particles.
3. If cleaning is needed, remove the nozzle.
4. To remove the nozzle, unfasten and remove the nut, and then remove the nozzle.
5. Clean the nozzle, re-insert it, and fasten the nut.
6. When fastening the nut, turn it firmly by hand.
7. Check whether the nozzle is engaged correctly by rotating it by hand.



Top nozzle

1. Check whether the nozzle holes are clogged by food particles.
2. If cleaning is needed, remove the nozzle.
3. To remove the nozzle, pull out the upper rack first, unfasten the nozzle cap by turning it counterclockwise, and then remove the upper nozzle.
4. Clean the nozzle, re-insert it, and then fasten the nozzle cap to the nozzle by turning the cap clockwise.
5. Check whether the nozzle is engaged correctly by rotating it by hand.



CLEANING THE FILTER

1. Remove the lower rack first

2. Rotate the filter handle counterclockwise to unfasten the filter compartment door.



3. Remove the filter door, and then the flat micro filter underneath.

4. Remove any dirt or other remains from the micro filter and the filter door, and then rinse them under running water.



5. Re-install the flat micro filter, and then the filter door.

6. Rotate the filter door handle clockwise to lock the filter door.


STORING YOUR DISHWASHER

If you need to store your dishwasher for an extended period of time, first drain and disconnect it. If you leave water in the hoses and internal components, you can damage the dishwasher.

After draining and disconnecting the dishwasher, be sure to turn off the water supply valve and circuit breaker.

troubleshooting

CHECK THESE POINTS IF YOUR DISHWASHER...

PROBLEM	POSSIBLE CAUSE	SOLUTION
Will not start.	The door is not closed completely.	Check if the door is latched and closed completely. Check whether the Upper Rack is properly joined with Duct Nozzle. Also, Check imbalance assembly of the Upper Rack. 
	No cycle is selected.	Select a proper cycle.
	The power cable is not connected.	Connect the power cable properly.
	The water supply does not work.	Check if the water supply valve is open.
	The Control Panel is locked.	Unlock the child lock, (See page 10.)
	A circuit breaker is open.	Reset the circuit breaker.
It's taking too long with an operation or cycle.	Cold water is being supplied.	Check if the water supply line is connected to a hot water supply. (Additional time is required to heat cold water.)
There are food particles remaining on dishes. (Not cleaning properly.)	The cycle selected was unsuitable.	Select a cycle according to the number and soil level of the dishes, as directed in this manual.
	The water temperature is low.	Connect the water supply line to a hot water supply. For best performance, the temperature of the supplied water should be 120 °F (49 °C).
	Low water pressure.	

	The water pressure should be between 20 and 120 psi (140 ~ 830 kPa).
The water is too hard.	<p>Use a commercial dishwasher cleaner.</p> <p>Use high-quality, fresh detergent with rinse aid.</p> <p>Clean the filter at least once per month. (See page 26.)</p> <p>Use a water softener additive designed for dishwashers.</p>
Dishwasher detergent was not used.	<p>Use automatic dishwasher detergent.</p> <p>We recommend a powder or gel type dishwasher detergent.</p>
Detergent remains in the dispenser.	<p>Make sure large items such as cookie sheets, cutting boards, or containers, etc. are not blocking the detergent dispenser and preventing it from opening properly.</p> <p>Rearrange the dishes so they do not interfere with detergent dispenser operation.</p>
There is no rinse aid.	<p>Check the dispenser and add rinse aid.</p> <p>Use liquid type rinse aid.</p>
A nozzle is clogged.	Clean the nozzle. See pages 24 and 26.
The dishes are improperly loaded.	Rearrange the dishes so they do not interfere with nozzle rotation and detergent dispenser operation.



	Too many dishes have been loaded.	Load only an appropriate number of dishes. Load your dishes as recommended. (See page 17.)
	Filter could be clogged. (Food soils remain on the filter.)	Scrape food from dishes prior to loading. (Do not prerinse.) Clean the soils and filters. (See page 26.)
Leaves glasses with a light film.	The water supplied is soft and too much detergent was used.	Underload the dishwasher and use a rinse aid to minimize this.
	Aluminum dishes were included in the wash load.	Remove the marks on the dishes using a low sensitivity cleaner.
Leaves a yellow or brown film on the inside of the dishwasher.	This is caused by coffee and tea soils.	Remove the soils using a spot cleaner.
Does not dry dishes well.	There is no rinse aid in the dispenser.	Check the dispenser and add rinse aid. Use a liquid type rinse aid.
	The temperature of the water is low when the dishwasher is running.	Connect the water supply line to a hot water supply. Use rinse aid with the Sanitize option.
	Too many dishes have been loaded.	Proper loading of items can affect drying. Load your dishes as recommended.
	Glasses and cups with concave bottoms hold water. This water may spill onto other items when unloading.	After finishing the cycle, empty the lower rack first and then the upper rack. This will prevent water dripping from the upper rack onto the dishes in the lower rack.



Has a bad odor.	Water was left over from an incomplete cycle.	Insert detergent without loading dishes, and run the Normal cycle to clean the dishwasher.
	The Drain Hose is obstructed.	Contact a qualified service technician to remove any obstruction from the drain hose.
	The dishwasher is not used daily or soiled dishes are left in unit too long.	With the dishwasher empty and no detergent, place a glass with 8 ounces of vinegar upright into the lower rack, and then run a Normal cycle.
Is too noisy	Sound is generated when the dispenser cover is open and the drain pump is operating in an early stage.	This is normal operation.
	The dishwasher is not level.	Ensure the dishwasher is level.
	Foreign material (a screw, a plastic piece) is in the pump chamber.	Contact a qualified service technician to remove foreign material from the pump chamber.
	There is a 'chopping' sound because a nozzle is bumping against the dishes.	Rearrange the dishes.
Does not have a smoothly rotating nozzle.	The nozzle hole is clogged with food particles.	Clean the nozzle hole. See pages 24 and 26.
	The nozzle is blocked by a dish or pot and cannot rotate.	After placing the dishes into the racks, rotate the nozzles by hand to check whether any of the dishes interfere with them
Water won't pump out of the dishwasher.	The drain is clogged.	Contact a qualified service technician to remove any obstruction from the drain hose

		and drain hole inside the sump. After that check the drain pump operation.
Has a bent upper rack after loading dishes.	The dishes are not loaded properly.	Load your dishes as recommended.

INFORMATION CODES

The Control Panel displays information codes to help you understand what is occurring with your dishwasher



Code	Action
OC	<p>Over-level water check</p> <ul style="list-style-type: none"> • Functional check. Close the water supply valve and go to your house circuit breaker panel, set the dishwasher's circuit breaker switch to off , and then contact an authorized Samsung service centre.
LC	<p>Leakage check</p> <ul style="list-style-type: none"> • If a water supply valve connection leak occurs, close the water supply valve and go to your house circuit breaker panel, set the dishwasher's circuit breaker switch to off , and then contact the installer to fix. <p>If the problem continues, contact an authorized Samsung service centre.</p>
4C	<p>Water supply check</p> <ul style="list-style-type: none"> • Check if the water supply valve is closed, the water supply is suspended, or the water inlet valve or line is frozen or clogged by foreign particles. <p>If the problem continues, close the water supply valve, and then contact an authorized Samsung service centre.</p>
5C	<p>Drain check</p> <ul style="list-style-type: none"> • After closing the water supply valve, check whether the drain hose is clogged or folded. Also, check whether drain hole inside sump is clogged. <p>If the problem continues, contact an authorized Samsung service centre.</p>
HC	<p>High temperature heating check</p> <ul style="list-style-type: none"> • Functional check. With the dishwasher empty, add detergent, and then run a cycle. <p>If the problem continues, go to your house circuit breaker panel, set the dishwasher's circuit breaker switch to off , and then contact an authorized Samsung service centre.</p>
3C	<p>Pump operation check</p>

- Functional check. Turn off the dishwasher and try to start it again. If the problem continues, contact an authorized Samsung service center.

SPECIFICATIONS

Model	DW80H9940US / DW80J9945US / DW80J7550US / DW80J7550UW		
Type	Built-in Dishwasher	Wash capacity	15 place setting
Power	120 V / 60 Hz AC only, 15 A circuit breaker	Used water pressure	20 ~ 120 psi (140 ~ 830 kPa)
Rated power usage	Wash Motor : 60 ~ 100 W		
	Heater : 1100 W		
Dimensions (Width x Depth x Height)	23 $\frac{7}{8}$ x 25 x 33 $\frac{7}{8}$ in. (605 x 636 x 860 mm)		
Weight	Unpacked 97 lb (44 Kg) [DW80J9945US] Unpacked 93 lb (42 Kg) [DW80H9940US / DW80J7550US / DW80J7550UW]		

Warning

This content is compiled from multiple sources and is provided for reference purposes only. It may not be complete or fully applicable to all situations. If you are unable to resolve your issue, please contact the product manufacturer or an authorized service provider for official support.