

Product View

- 1 Steam Trigger
- 2 Easy Touch Digital Controls – LO/Hi Steam & Vac On/Off
- 3 Cord Clip
- 4 Handle
- 5 Water Cup
- 6 25' Power Cord
- 7 Water Tank with Easy Fill Opening
- 8 Vacuum Filter
- 9 Drop-it™ Pet Hair Removal System
- 10 Bottom Empty Dirt Bin
- 11 Disposable Swiffer SteamBoost® (varies by model)
- 12 Microfiber Mop Pads
- 13 Quick Release Pad Tray
- 14 Water Filter (varies by model)
- 15 Carpet Glider (varies by model)
- 16 Scent Disk (varies by model)
- 17 STEAMBOOST Tray
- 18 Vacuum Nozzle



WARNING: Plastic film can be dangerous. To avoid danger of suffocation, keep away from babies and children.

WARNING: Do not plug in your hard floor cleaner until you are familiar with all instructions and operating procedures.

WARNING: To reduce the risk of electric shock, turn power switch off and disconnect polarized plug from electrical outlet before performing maintenance or troubleshooting checks.

Assembly

Your hard floor cleaner assembles quickly and easily, no tools required.

WARNING: Do not plug in your hard floor cleaner until you are familiar with all instructions and operating procedures

To assemble the unit

WARNING: Exercise extreme care when using the Symphony on hardwood floors. Prolonged application of steam in one area increases the risk of damage to the surface treatment on timber floors. Test steam mop in an inconspicuous area before mopping a large area. The steam mop generates hot steam, so move the unit continuously when depressing the trigger. The trigger does not need to be depressed at all times. Regular foot traffic and direct sunlight will wear down timber floor surface treatment, making it more susceptible to steam damage. Check with your timber floor treatment and application specialist prior to steam mop operation

1. Insert the body into the foot until you hear the locking tab click.
2. Insert the handle into the body of the unit until you hear a locking tab click.





Operations


WARNING: Appliance will not pick up crayons, marbles and other large objects.

Special Features

Easy Touch Digital Controls - The fingertip power controls are located on the front of the handle.

Settings include:

-  (HI) – High Steam Use for durable floors or on sticky messes. To turn steam on, press once. Click again to turn steam off. Can be used simultaneously with the vacuum function or separately as a steam mop only
-  (LO) – Low Steam Use on delicate floors or for light, everyday cleaning. To turn steam on, click once. Click again to turn steam off. Can be used simultaneously with the vacuum function or separately as a steam mop only.
- NOTE: You must select a steam setting first and then hold down the hand trigger to produce steam.

-  (VAC) – Vacuum On/off switch. Can be used simultaneously with either steam function or separately as a stick vacuum only.

- NOTE: All settings can be used alone or either steam setting can be used simultaneously with the vacuum setting.

Tip: Do not attempt to use your hard floor cleaner on the steam setting without water in the tank. You may hear a knocking sound indicating there is no water

WARNING: Be sure to turn off vacuum mode if you encounter liquid on the floor

Microfiber Mop Pads: Reusable microfiber mop pads are machine washable and safe for virtually all hard floor surfaces. The white microfiber pad is best for everyday use on delicate flooring like sealed hardwoods and laminate. The gray and white striped pad can be used for scrubbing heavily soiled floors and cleaning tougher messes.

Disposable Swiffer SteamBoost Pads® (varies by model): Single use disposable Swiffer SteamBoost Pads® are safe for virtually all hard floor surfaces. Use them when you would prefer to dispose of your messes rather than wash your pads clean.

Getting Ready

WARNING: Do not operate appliance with damp or wet filters or without all filters in place.

The mop pad may have already come attached to the mop pad tray on the foot of the unit. If not, please follow step 1 below.

For Microfiber Mop pads, please follow these steps:

1. Attach mop pad.
 - a. Step on foot release for mop pad tray and lift unit off tray.
 - b. Some units may come with freshening discs. Add Freshening Disc in the mesh pocket in the mop pad. Use the whole disc for a refreshing scent or cut in half for a lighter scent.
 - c. Wrap mop pad around the bottom of the tray, making sure the gray stitching is in the front and the quick release tab is in the back.
 - d. Put the mop pad tray back down on the floor and set the unit back on top. It will click into place.

Some units may come with a disposable pad option

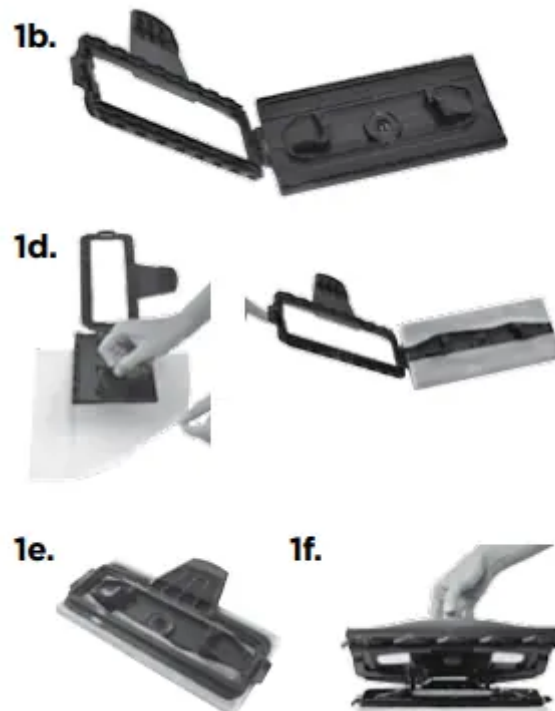
Microfiber Mop Pad



WARNING: Tinted plates on foot may get hot while steam mop is in use. Do not touch while hot.

For Disposable Swiffer SteamBoost Pads® (varies by model), please follow these steps:

Swiffer SteamBoost Pads®



1. Attach Swiffer SteamBoost Pads®

- a. Step on foot release for mop pad tray and lift unit off tray.
- b. Open the tray by lifting up the release tab.
- c. Undo the flaps on the pad.
- d. Place opened tray on pad. Wrap pad around the bottom of the tray, making sure the ends of the pad are folded on top of the tray.

- e. Close the tray by folding down, snapping into place over the pad.
 - f. Put the STEAMBOOST pad tray back down on the floor and set the unit back on top. It will click into place.
2. Fill the water tank.
- a. On the back of the unit, open the Easy Fill opening of the water tank and use the included water cup to fill the water tank with water. Don't overfill or water may spill from the tank. For best results, water should be at room temperature.
 - b. Close the Easy Fill opening.
 - c. The water tank holds 13oz. and will last approximately 15 minutes depending on the amount of the steam used during cleaning.
3. Pull and twist the Quick Release™ cord wrap clockwise to unwrap the power cord completely and plug into an outlet as described on the Important Safety Instructions on page 2. NOTE: Upon the first use of the Symphony or first use after refilling the water tank, the pump may make a 'knocking' sound. This is normal and could last up to 30 seconds.

WARNING: Never put descaling, alcoholic, or detergent products into the steam cleaner, as this may damage it or make it unsafe for use.

2.



Using Your Symphony Hard Floor Vacuum and Steam Mop

WARNING: To reduce the risk of electric shock, turn power switch off and disconnect polarized plug from electrical outlet before performing maintenance or troubleshooting checks.

1.





2.



The hard floor cleaner can be used as a stick vacuum and a steam mop at the same time or separately. For best results and time savings, use the powerful vacuum to clear floor of dust and small debris as you steam mop.

Your hard floor cleaner is designed to clean hard flooring, such as ceramic tile, marble, stone and sealed hard wood floors. Use on waxed or some unwaxed floors may result in a diminished glossiness. The hard floor cleaner is not for use on unsealed wood floors. For best results, test in an inconspicuous area and check the care instructions from your flooring manufacturer.

1. Fill the unit with water and then plug the unit in and wait 30 seconds for it to heat up.
Choose the level of steam to clean your floor:

-  HI for durable floors or sticky messes.
-  LO for delicate floors or every day cleaning

NOTE: It is recommended to use the low level steam setting when using the disposable Swiffer SteamBoost Pads® (select units).

2. Press steam trigger on the underside of the handle to actuate steam



3. Push the VAC switch down to turn on the cyclonic vacuum.

4. Begin cleaning by slowly moving the unit over the floor surface while pressing the steam trigger on the underside of the handle. Moisture on the floor is normal when using in steam mode.

5. When the hard floor cleaner stops emitting steam, turn the unit off (both steam mop and vacuum functions) and unplug. Open the Easy Fill opening of the water tank and use the water cup to add more water to the tank. For best results, water should be at room temperature. Then close the Easy Fill opening, turn the unit back on and continue cleaning.

NOTE: To be sure to sanitize an area of your floor, use the microfiber cloth pads and slowly and evenly stroke your steam mop back and forth at least three times over the area using continuous steam. For best results, remove the pad and wash after use.

Maintenance & Care

Removing All Mop Pads

WARNING: To reduce the risk of electric shock, turn power switch off and disconnect polarized plug from electrical outlet before performing maintenance or troubleshooting checks

CAUTION: Upright storage of the cleaner with a wet mop pad may result in the formation of white marks on your floor. To remove the white marks, clean area with vinegar.

2.

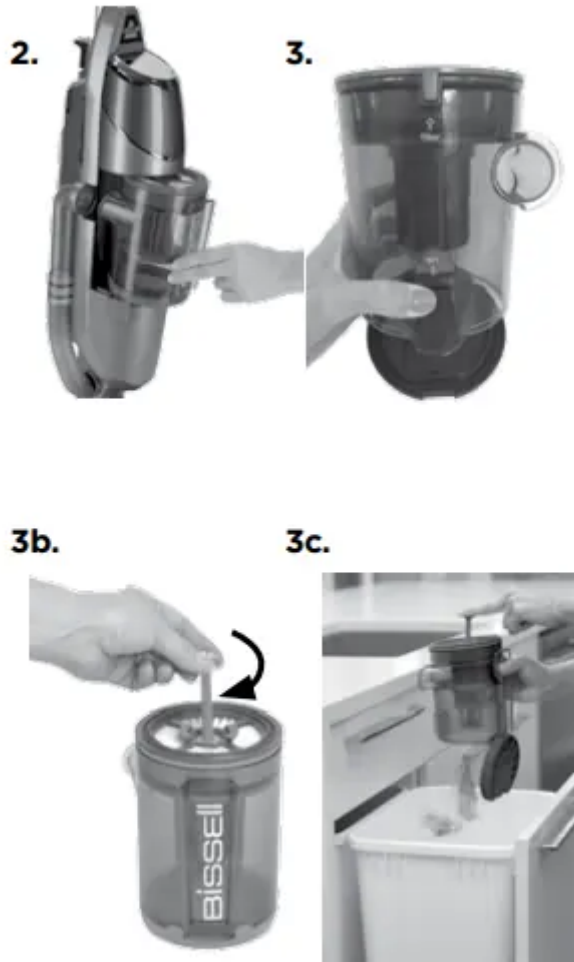


1. Unplug hard floor cleaner from electrical outlet.
2. Step on foot release for mop pad tray and lift unit off tray.
3. Carefully remove mop pad from the mop pad tray using the Quick Release™ Tab. The mop pad and tray may be hot.
4. Put the mop pad tray back down on the floor and set the unit back on top. It will click into place.

5. The microfiber mop pad can be machine washed in warm water. Use only liquid detergents. Do not use fabric softeners or bleach. For best results, air dry.
6. For Swiffer SteamBoost Pads® (select units), throw away after use. Do not flush.

Empty Dirt Tank

The dirt tank needs to be emptied when the dirt reaches the 'Full' line on the side of the tank.



1. Unplug hard floor cleaner from electrical outlet.
2. Remove the EasyEmpty™ dirt tank from the unit by moving the lock button on the front of the unit to the left.
3. The dirt tank has a built in Drop-it™ system for easy debris emptying.
 - In the middle of the vacuum filter attached to the top of the dirt tank locate the color rod
 - Pull the rod up and lock the rod in place by turning it clockwise
 - Push down on the lever to force out stuck debris
 - When done, rotate the color rod counter-clock wise and push it down to return it to its original position

4. Mount the EasyEmpty™ dirt tank back on the vacuum base and push the lock button to the right until it is centered on the front of the unit.

NOTE: The dirt tank may be washed in warm water with a mild detergent. Make sure it is completely dry before replacing

Cleaning or Replacing the Vacuum Filter

The key to maximum performance is having a clean filter. Cleaning the filter after each use will help your vacuum operate at peak efficiency.

Use only genuine BISSELL Symphony replacement filters in your BISSELL hard floor cleaner. To purchase visit www.BISSELL.com.

WARNING: To reduce the risk of electric shock, turn off machine and disconnect polarized plug from electrical outlet before performing maintenance or troubleshooting checks.



To clean filter:

1. Turn power off and unplug unit.
2. Remove the dirt container from the unit, as directed above.
3. Remove filter and tap firmly against the inside of a waste container, removing any visible dirt.
4. Replace filter back into the dirt container and attach dirt container to the base of the unit. Slide the lever to your right to lock

NOTE:

- After heavy usage, you may clean the pleated filter by washing it gently by hand
- You may replace the paper, pleated filter when dirty. Recommended replacement is every 6 months. Reference page 16 for replacement part information.

Thermal Protector

WARNING: To reduce the risk of electric shock, turn power switch off and disconnect polarized plug from electrical outlet before performing maintenance or troubleshooting checks.

An internal thermal protector has been designed into your vacuum to protect it from overheating. When the thermal protector activates, the vacuum motor will stop operating. If this happens:

1. Turn the cleaner OFF and unplug from electrical outlet.
2. Empty dirt container, check filters and air passages for dirt accumulation.
3. The thermal protector automatically resets after approximately 2 hours. If the thermal protector does not reset, call BISSELL Consumer Services or visit the website.

Replacing the Water Filter

- Some models will come with an optional water filter. If your unit comes with a water filter:
- It is recommended to fill your unit with distilled water only. Periodically check your water filter. When the green grains turn blue, change your water filter.
- If the filter is not changed at the appropriate time, calcium deposits may accumulate on the heater, causing damage or reduced performance. NOTE: If your unit does not come with a water filter, it is still recommended to use distilled water to fill your unit. Using your unit without a water filter does not diminish performance or cause damage.

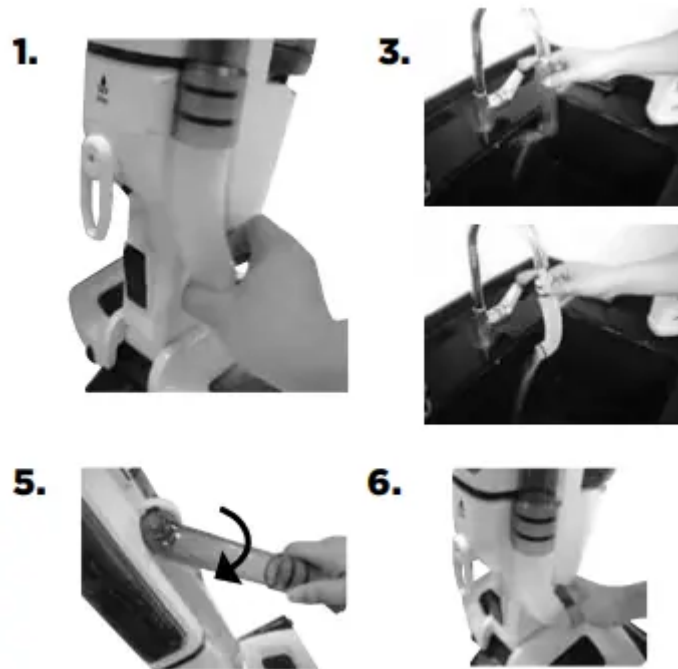


To replace the filter:

1. Using the grips on the side of the filter, pull filter out of the unit.
2. Push filter firmly into the machine until it's flush. Reference page 14 for replacement part information.

Cleaning Hose Tube

WARNING: To reduce the risk of electric shock, turn power switch off and disconnect polarized plug from electrical outlet before performing maintenance or troubleshooting checks



1. Grab bottom end of the hose and pull lower portion away from the body.
2. Separate the hose into two pieces.
3. Wash hose and wait for it to dry.
4. Align the top of the hose to the grooves on the hose opening of the unit.
5. Twist hose down to insert lower portion of hose to the unit.
6. Make sure hose fits tightly into the unit.

Cleaning Foot of Unit

2.



1. To clean the foot and bristles, push the release button on the back of the pivot joint and pull the foot to release it from the appliance.
2. Wash bottom of foot and bristles with cold water.
3. Look for any clogging in the steam nozzle. To clean, run water over steam nozzle.
NOTE: Make sure foot and bristles are dry before attaching the foot to the appliance.
4. To re-attach the foot to the appliance: place the foot on the floor, push the appliance down into the foot and then listen for the click that sounds when properly attached.

Troubleshooting

WARNING: To reduce the risk of electric shock, turn power switch off and disconnect polarized plug from electrical outlet before performing maintenance or troubleshooting checks

Problem	Possible causes	Remedies
Vacuum cleaner has low suction	Dirt container is full Dirt container is not installed properly Foot is loose Filters need cleaning Filters need replacing Hose tube is not installed properly	Empty dirt container Position container correctly and move lock button to the right until it is in the center of the unit Make sure foot is fully inserted into body of unit Follow filter instructions on page 13 Visit www.bissell.com to order replacement filters Follow instructions on page 12
Visible dirt escaping from cleaner	Dirt container is full of debris Filter is missing or installed incorrectly Dirt container installed incorrectly	Empty dirt container Check filter for correct installation Position container correctly and move lock button to the right until it is in the center of the unit
Reduced steam or no steam	Water tank empty Steam level not selected Water filter is not installed properly	Fill tank Select steam level by pushing steam level button Push the water filter all the way into the unit until it's flush

Please do not return this product to the store.

Other maintenance or service not included in the manual should be performed by an authorized service representative. Thank you for selecting a BISSELL product

Warning

This content is compiled from multiple sources and is provided for reference purposes only. It may not be complete or fully applicable to all situations. If you are unable to resolve your issue, please contact the product manufacturer or an authorized service provider for official support.

