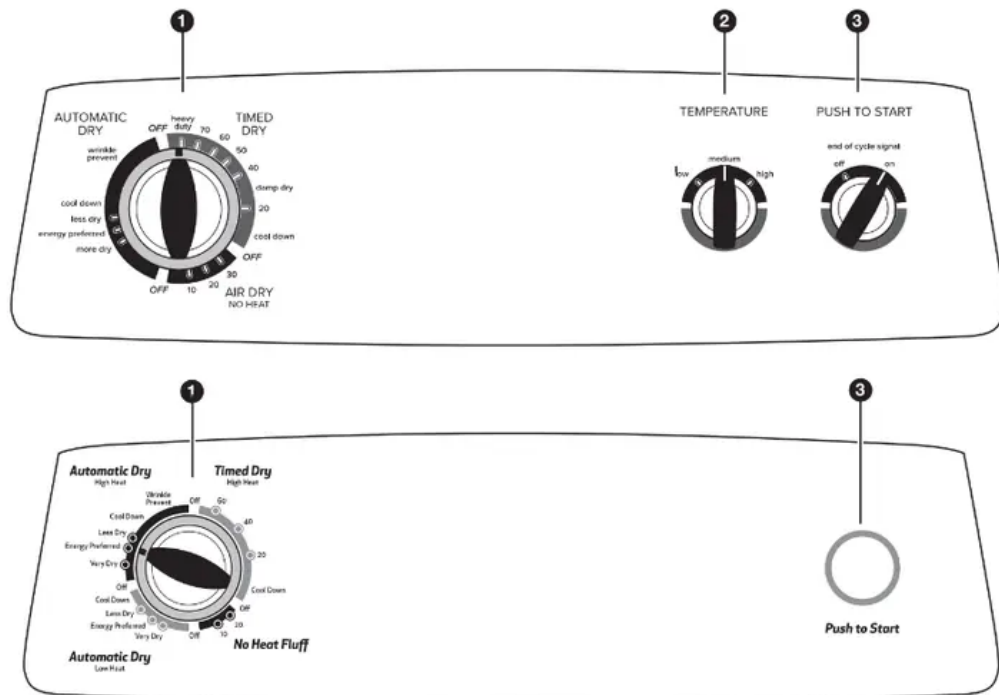


CONTROL PANEL & FEATURES



Not all features and options are available on all models.
Appearance may vary.

1. DRYER CYCLE KNOB

Use your Dryer Cycle Knob to select available cycles on your dryer. Turn the knob to select a cycle for your laundry load. See “Cycle Guide” for detailed descriptions of cycles.

TIMED DRY

Will run the dryer for the specified time on the control. On models with a selectable temperature knob, you may choose a setting based on the fabrics in your load. Drying time and temperature will depend on your dryer model.

AUTOMATIC DRY

Senses moisture in the load or air temperature and shuts off when the load reaches the selected dryness level. Gives the best drying in the shortest time. Drying time will vary based on fabric type, load size, and dryness setting.

2. TEMPERATURE

Select a drying temperature based on the fabrics in your load. If you are unsure of the temperature to select for a load, select the lower setting rather than the higher setting.

3. PUSH TO START/END OF CYCLE SIGNAL

The End of Cycle Signal produces an audible sound when the drying cycle is finished. Promptly removing clothes at the end of the cycle reduces wrinkling.

Turn the END OF CYCLE SIGNAL knob to select the desired setting (On or Off). Press the PUSH to START knob to start the dryer.

CYCLE GUIDE — AUTOMATIC DRY CYCLES

Not all cycles and settings are available on all models.



Items to dry:	Dryness Level :	Temperature:	Cycle Details:
Jeans, heavy work clothes, towels	More Dry/Very Dry Energy Preferred Less Dry	High	Automatic cycles give the best drying in the shortest time. Drying time varies based on fabric type, load size, and dryness setting. Select a drying temperature based on the fabrics in your load. If you are unsure of the temperature to select for a load, select the lower setting rather than the higher setting.
Work clothes, medium weight fabrics, sheets	More Dry/Very Dry Energy Preferred Less Dry	Medium	Automatic cycles give the best drying in the shortest time. Drying time varies based on fabric type, load size, and dryness setting. Select a drying temperature based on the fabrics in your load. If you are unsure of the temperature to select for a load, select the lower setting rather than the higher setting.
Casual, shirts, pants, lightweight items, synthetics, delicates, athletic wear	More Dry/Very Dry Energy Preferred Less Dry	Low	Automatic cycles give the best drying in the shortest time. Drying time varies based on fabric type, load size, and dryness setting. Select a drying temperature based on the fabrics in your load. If you are unsure of the temperature to select for a load, select the lower setting rather than the higher setting.



CYCLE GUIDE — TIMED DRY CYCLES

Not all cycles and settings are available on all models.

TIMED DRY - Will run the dryer for the specified time on the control.

Items to dry:	Cycle:	Temperature:	Cycle Details:
Large or heavy items such as thick towels or robes	Heavy Duty/ Heavy Dry	Any	Choose high to dry large or heavy loads.
Any load	Damp Dry	Any	Dries items to a damp level or for items that do not require an entire drying cycle.
Any load	Tumble Press®	Any	Use low to medium temperature to smooth out wrinkles, such as those found in clothes packed in a suitcase or in items wrinkled from being left in the dryer too long.
Rubber, plastic, heat sensitive fabrics	Air Dry/ No Heat No Heat Fluff	N/A	No heat drying.

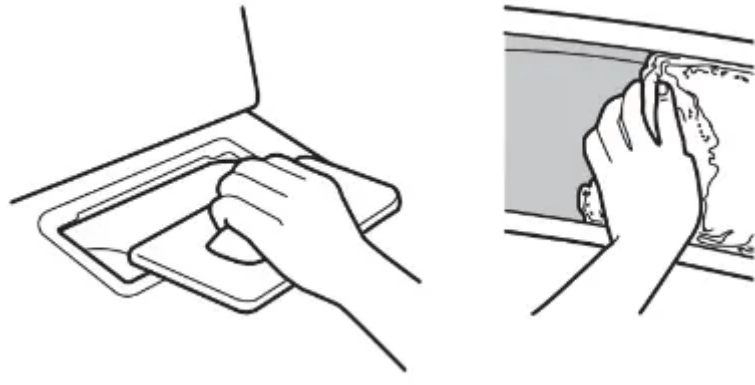
Setting the Drying Temperature

If your dryer has multiple heat settings:

- A High temperature setting may be used for drying heavyweight items such as towels and work clothes.
- A Low to Medium temperature setting may be used for drying medium-weight items such as sheets, blouses, dresses, underwear, permanent press fabrics, and some knits.
- Use the Air Dry/No Heat or No Heat Fluff setting for foam, rubber, plastic, or heat-sensitive fabrics.
- Line dry bonded or laminated fabrics.

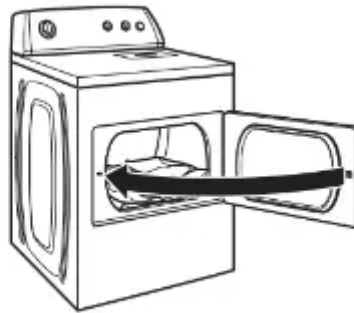
USING YOUR DRYER

1. Clean the lint screen



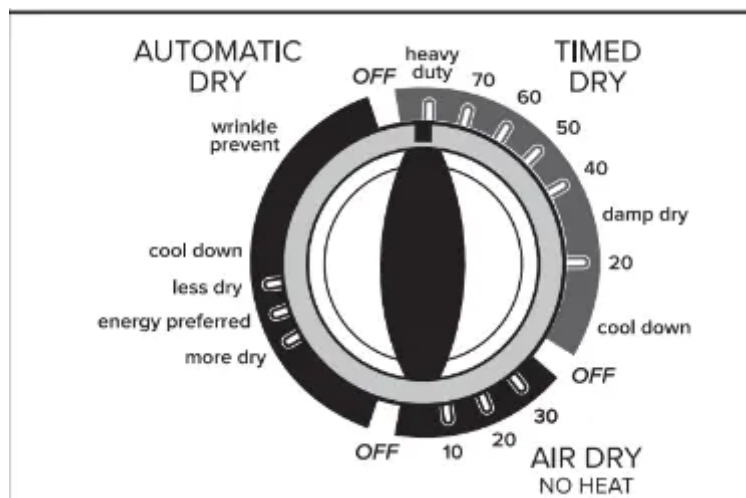
Clean the lint screen before each load. Pull the lint screen out of its holder. Roll lint off the screen with your fingers. Do not rinse or wash screen to remove lint. Push the lint screen firmly back into place. For additional cleaning information, see “Dryer Care”.

2. Load the dryer



Place laundry in the dryer. Close the door. Do not tightly pack the dryer; clothes should be able to tumble freely.

3. Select the desired cycle



Select the desired cycle for your load. See the Cycle Guide for more information about each cycle.

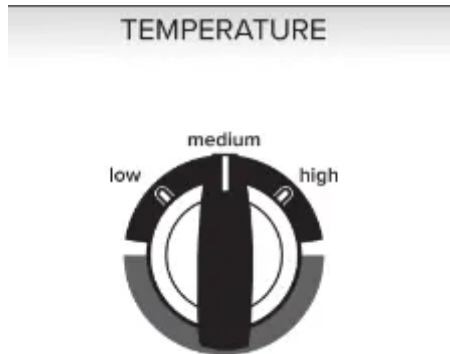
AUTOMATIC DRY Cycles

You can select a different dryness level, depending on your load, by turning the knob to dryness level.

Selecting Very Dry, ENERGY PREFERRED, or Less Dry automatically adjusts the dryness level at which the dryer will shut off. Once a dry level is set, it cannot be changed without stopping the cycle.

AUTOMATIC DRY cycles give the best drying in the shortest time. Drying time varies based on fabric type, load size, and dryness setting.

4. Set cycle settings and options



Select cycle settings and options by turning the knob to the desired position.

5. Select End of Cycle Signal (depending on model)



Turn the END OF CYCLE SIGNAL knob to select the desired setting (On or Off). The End of Cycle Signal produces an audible sound when the drying cycle is finished. Promptly removing clothes at the end of the cycle reduces wrinkling.

6. Press PUSH to START to begin cycle (appearance may vary)



Push to Start

Push and hold the PUSH to START knob to begin the cycle.

DRYER CARE

CLEANING THE DRYER LOCATION

Keep dryer area clear and free from items that would block the air flow for proper dryer operation. This includes clearing piles of laundry in front of the dryer.

CLEANING THE DRYER INTERIOR

To clean dryer drum

1. Apply a liquid, nonflammable household cleaner to the stained area of the drum and rub with a soft cloth until stain is removed.
2. Wipe drum thoroughly with a damp cloth.
3. Tumble a load of clean cloths or towels to dry the drum.

REMOVING ACCUMULATED LINT

From inside the dryer cabinet

Lint should be removed every 2 years, or more often, depending on dryer usage. Cleaning should be done by a qualified servicer.

From the exhaust vent

Lint should be removed every 2 years, or more often, depending on dryer usage.

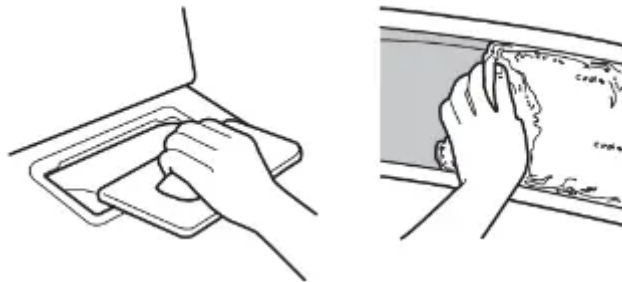
CLEANING THE LINT SCREEN

Every load cleaning

The lint screen is located in the dryer. A screen blocked by lint can increase drying time.

To clean:

1. Pull the lint screen out of its holder. Roll lint off the screen with your fingers. Do not rinse or wash screen to remove lint. Wet lint is hard to remove.



2. Push the lint screen firmly back into place.

As needed cleaning

Laundry detergent and fabric softener residue can build up on the lint screen. This buildup can cause longer drying times for your clothes, or cause the dryer to stop before your load is completely dry. The screen is probably clogged if lint falls off while the screen is in the dryer.

Clean the lint screen with a nylon brush every 6 months, or more frequently, if it becomes clogged due to a residue buildup.

To wash:

1. Roll lint off the screen with your fingers.
2. Wet both sides of lint screen with hot water.
3. Wet a nylon brush with hot water and liquid detergent. Scrub lint screen with the brush to remove residue buildup.



4. Rinse screen with hot water.
5. Thoroughly dry lint screen with a clean towel. Reinstall screen in dryer.

VACATION, STORAGE, AND MOVING CARE

Non-Use or Storage Care

Operate your dryer only when you are at home. If you will be on vacation or not using your dryer for an extended period of time, you should:

1. Unplug dryer or disconnect power.
2. (For gas dryers only): Close shut off valve to gas supply line.
3. Clean lint screen. See “Cleaning the Lint Screen.”

Moving Care

For power supply cord-connected dryers:

1. Unplug the power supply cord.
2. Make sure leveling legs are secure in dryer base.
3. Use tape to secure dryer door.

For direct-wired dryers:

1. Turn off power at fuse or breaker box.
2. Disconnect wiring.
3. Make sure leveling legs are secure in dryer base.

4. Use tape to secure dryer door.

For gas dryers:

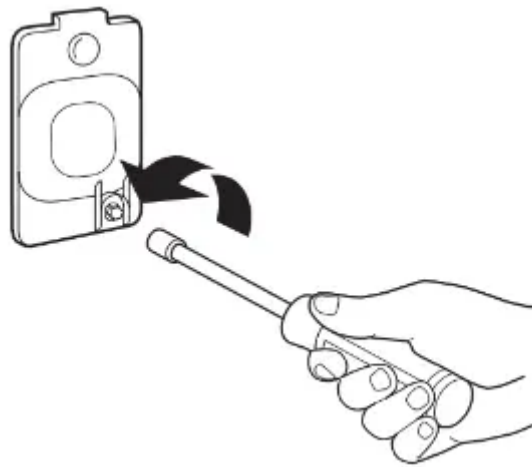
1. Unplug or disconnect power to dryer.
2. Close shutoff valve in gas supply line.
3. Disconnect gas supply line pipe and remove fittings attached to dryer pipe.
4. Cap the open fuel supply line.
5. Make sure leveling legs are secure in dryer base.
6. Use tape to secure dryer door.

Reinstalling the Dryer

Follow the "Installation Instructions" to locate, level, and connect the dryer.

CHANGING THE DRUM LIGHT (ON SOME MODELS)

1. Unplug dryer or disconnect power.
2. Open the dryer door. Locate the light bulb cover on the back wall of the dryer. Using a 1/4" nut driver or socket wrench, remove the screw located in the lower right-hand corner of the cover. Remove the cover.



3. Turn bulb counterclockwise. Replace the bulb with a 10-watt appliance bulb only. Replace the cover and secure with the screw.
4. Plug into a grounded outlet or reconnect power.

TROUBLESHOOTING

To possibly avoid a service call, first try the suggestions listed here or refer to the "Assistance or Service" page.

If you experience	Possible Causes	Solution
<p>Clothes are not drying satisfactorily, drying times are too long</p>	<p>Lint screen clogged with lint.</p> <p>Has the Air Only cycle been selected.</p> <p>Load too large and heavy to dry quickly.</p> <p>Exhaust vent or outside exhaust hood clogged with lint, restricting air movement.</p> <p>Fabric softener sheets blocking the grill.</p> <p>Exhaust vent not the correct length.</p> <p>Exhaust vent diameter not the correct size.</p> <p>Dryer located in a room with temperature below 45oF (7oC)?</p> <p>Dryer located in a closet without adequate opening.</p>	<p>Lint screen should be cleaned before each load.</p> <p>Select the right cycle for the types of garments being dried. See "Cycle Guide."</p> <p>Separate the load to tumble freely.</p> <p>Run the dryer for 5-10 minutes. Hold your hand under the outside exhaust hood to check air movement. If you do not feel air movement, clean exhaust system of lint or replace exhaust vent with heavy metal or flexible metal vent. Make sure vent is not crushed or kinked. See "Installation Instructions".</p> <p>Use only one fabric softener sheet, and use it only once.</p> <p>Check that the exhaust vent is not too long or has too many turns. Long venting will increase drying times. Make sure vent is not crushed or kinked. See "Installation Instructions".</p> <p>Use 4" (102 mm) diameter vent material.</p> <p>Proper operation of dryer cycles requires temperatures above 45oF (7oC).</p> <p>Closet doors must have ventilation openings at the top and bottom of the door. The front of the dryer requires a minimum of 1" (25 mm) of airspace, and, for most installations, the rear of the dryer requires 5" (127 mm). See "Installation Instructions".</p>



<p>Dryer will not run</p>	<p>Door not closed completely.</p> <p>PUSH to START knob not pressed firmly or held long enough.</p> <p>Household fuse is blown or circuit breaker has tripped.</p> <p>Incorrect power supply.</p> <p>Wrong type of fuse.</p>	<p>Make sure the dryer door is closed completely.</p> <p>Press and hold the PUSH to START knob until you hear the dryer drum moving.</p> <p>Electric dryers use 2 household fuses or circuit breakers. The drum may be turning, but you may not have heat. Replace both fuses or reset the circuit breaker. If the problem continues, call an electrician.</p> <p>Electric dryers require 240-volt power supply. Check with a qualified electrician.</p> <p>Use a time-delay fuse.</p>
<p>Unusual sounds</p>	<p>Dryer had a period of non-use.</p> <p>A coin, button, or paper clip caught between the drum and front or rear of the dryer.</p> <p>It is a gas dryer.</p> <p>All four legs are not installed, dryer not level front to back and/or side to side.</p> <p>Clothing knotted or balled up.</p>	<p>If the dryer hasn't been used for awhile, there may be a thumping sound during the first few minutes of operation.</p> <p>Check the front and rear edges of the drum for small objects. Clean out pockets before laundering.</p> <p>The gas valve clicking is a normal operating sound.</p> <p>The dryer may vibrate if not properly installed. See "Installation Instructions".</p> <p>When balled up, the load will bounce, causing the dryer to vibrate. Separate the load items and restart the dryer.</p>
<p>No heat</p>	<p>Household fuse is blown or circuit breaker has tripped.</p> <p>Supply line valve not open.</p> <p>Incorrect power supply.</p>	<p>The drum may be turning, but you may not have heat. Electric dryers use 2 household fuses or circuit breakers. Replace both fuses or reset the circuit breaker. If the problem continues, call an electrician.</p>



		<p>For gas dryers, is the valve open on the supply line.</p> <p>Electric dryers require 240-volt power supply. Check with a qualified electrician.</p>
Cycle time too short	Automatic cycle ending early.	<p>The load may not be contacting the sensor strips. Level the dryer.</p> <p>Use Timed Dry for very small loads. Change the Dry Level setting on Automatic Dry cycles.</p> <p>Increasing or decreasing the Dry Level setting will change the amount of drying time in a cycle.</p>
Lint on load	Lint screen clogged.	Lint screen should be cleaned before each load.
Stains on load or drum	Dryer fabric softener not properly used.	<p>Add dryer fabric softener sheets at the beginning of the cycle.</p> <p>Fabric softener sheets added to a partially dried load can stain your garments.</p> <p>Drum stains are caused by dyes in clothing (usually blue jeans). These will not transfer to other clothing.</p>
Loads are wrinkled	Dryer tightly packed.	Dry smaller loads that can tumble freely reduce wrinkles from forming.
Odors	<p>Recent painting, staining, or varnishing in the area where your dryer is located.</p> <p>Dryer being used for the first time.</p>	<p>If so, ventilate the area. When the odors or fumes are gone from the area, rewash and dry the clothing.</p> <p>The new electric heating element may have an odor. The odor will be gone after the first cycle.</p>
Load is too hot	<p>Laundry items removed from the dryer before the end of the cycle.</p> <p>High temperature cycle used or was</p>	<p>Allow Cool Down cycle to finish before removing laundry from dryer. All cycles are cooled slowly to reduced wrinkling and make it easier to handle.</p> <p>Items removed before Cool Down may feel very warm.</p>

TEMPERATURE control set to high.	Select a lower temperature, and use an automatic drying cycle. These cycles sense the temperature or the moisture level in the load and shut off when the load reaches the selected dryness. This reduces overdrying.
----------------------------------	--

Warning

This content is compiled from multiple sources and is provided for reference purposes only. It may not be complete or fully applicable to all situations. If you are unable to resolve your issue, please contact the product manufacturer or an authorized service provider for official support.

