

## Use and Care Manual, Installation Instructions for Dryer

### Installation for best performance

#### **CAUTION:** DO NOT INSTALL THE DRYER:

- outdoors,
- in an environment with dripping water,
- near flammable materials,
- in rooms that are at risk of freezing,
- in rooms that may contain gas or other fuels,
- on carpets.

The dryer should be installed in an open area with no restrictions to ambient air for the best drying results. Space allowances to fully open the door should also be considered.

Do not operate the dryer at temperatures above 95°F (35°C) or below 41°F (5°C). Low temperatures affect the drying process and may prolong the drying times.

The installation surface (floor) must be level and structurally sound. Using the bubble level and the height-

adjustable feet installed on the appliance, level the appliance side to side and front to back.

## Installation Instructions

### READ AND SAVE THESE INSTRUCTIONS

#### **Introduction**

Read these installation instructions completely and carefully before starting to install your new dryer. The information contained can save you time and effort and will help to ensure the optimum performance of your new dryer. Be sure to observe all warnings and cautions.

#### **WARNING:** RISK OF FIRE, ELECTRIC SHOCK, OR INJURY TO PERSONS

- To reduce the risk of fire, electric shock, or injury to persons, read the Important Safety Instructions at the beginning of this manual before installing or operating this appliance.
- To reduce the risk of severe injury or death, follow all installation instructions.
- Clothes dryer installation must be performed by a qualified installer, according to these instructions and according to all local codes.
- In addition to the installation and safety information in this manual, the local water and electric authorities (services) may have special requirements that must be followed.
- Install the clothes dryer according to the manufacturer's instructions and local codes.

## CAUTION

- A dryer is heavy. Do not lift it by yourself, use additional help and care when lifting and positioning.
- If in doubt, have the appliance installed by an authorized technician.
- Take care to not damage the appliance. Do not hold on to protruding parts (e.g. door) when lifting. Do not push against the appliance door glass due to the risk of damage.
- Do not install the appliance outdoors or in an area exposed to freezing conditions.
- If freezing conditions exist where the appliance is located all drain water must be removed from hoses, sumps, pumps, etc.
- Hidden surfaces may have sharp edges. During service use caution when reaching inside the dryer housing.

These installation instructions are intended for use by qualified installers. In addition to these instructions, the installation must comply with:

- for the United States - National Electrical Code, ANSI/ NFPA70 - and latest editions of the State and Municipal and/or local regulations.
- for Canada - Canadian Electrical Code C22.1 - and the latest editions of the Provincial, Municipal, and/or local regulations.

## Before installing the dryer

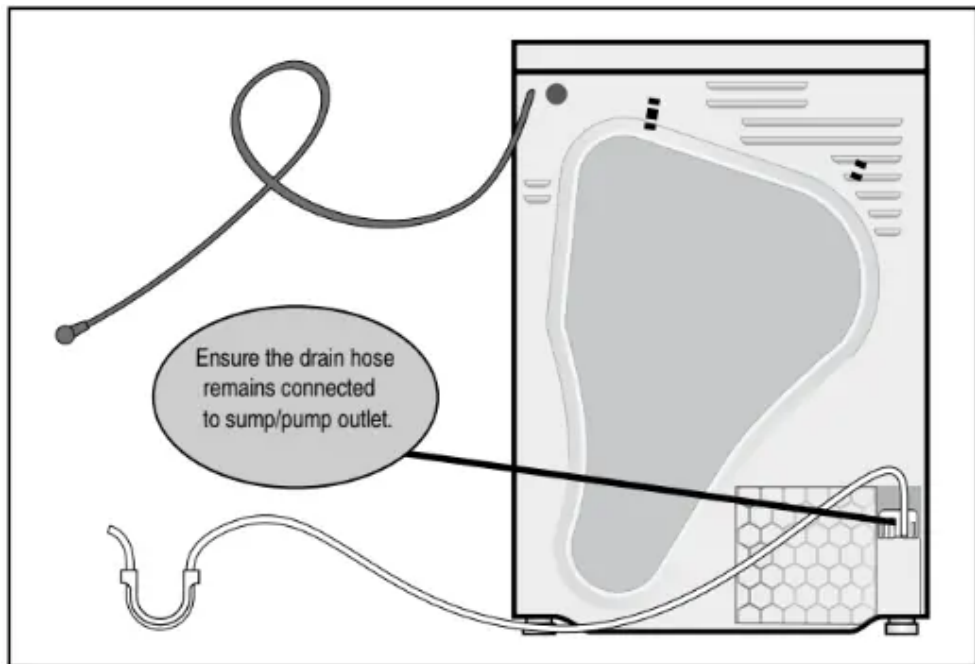
### Unpacking the appliance

**CAUTION:** Remove the appliance packaging carefully to prevent damage to the surfaces. After removing the packaging, immediately remove any objects from the drum.

Check the dryer for transportation damage. Do not connect the utilities (power or drain) to a dryer that is visibly damaged. If in doubt, contact your dealer.

## Installation - step by step

1. Unpack the dryer.
2. Remove all objects from the dryer drum.
3. Check the dryer for visible damage.
4. Position the dryer near the installation location.
5. Disconnect the power cord and drain hose from their clips on the back of the dryer.
  - **CAUTION:** Do not disconnect the drain hose from the sump/ pump connection at the bottom of the dryer.



**NOTICE:** Do not reuse an old or different drain hose. Only use the drain hose included with the dryer.

6. Connect the outlet end of the drain hose to a standpipe or other drain inlet. Examples are shown below.

**CAUTION:** APPLIANCE DAMAGE COULD OCCUR IF DRAIN WATER FLOWS BACK INTO THE APPLIANCE

In all drain conditions, scenarios, or connections you must ensure:

- The drain water from the hose is free-flowing and not obstructed allowing adequate water flow.
- The drain opening is not sealed in any way and ventilated enough not to cause a back siphon.
- The end of the drain hose does not protrude into the pumped-out or standing water.
- Be sure to follow all local codes and regulations in draining the condensate water to a suitable drain.

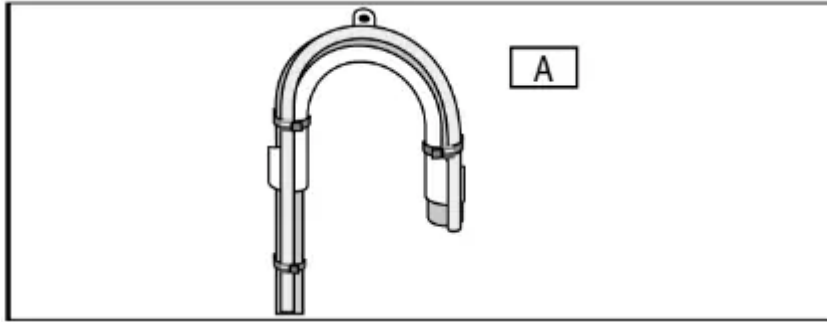
**Examples of connections:**

- Plumbing box or Standpipe connection:

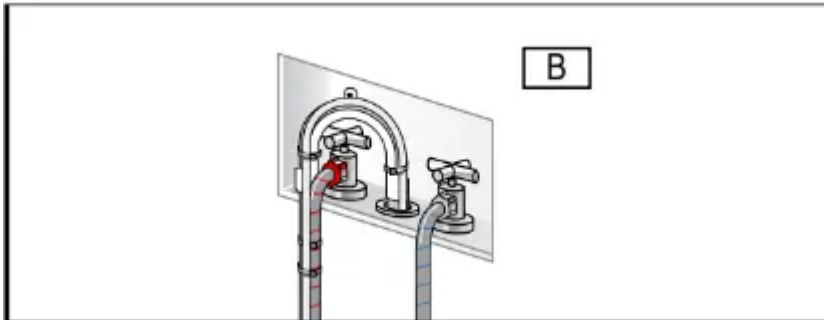
For most plumbing box installations (with adjacent washers) the plastic elbow supplied with the dryer will not be used and must be removed from the dryer drain hose.

1. Fasten the dryer drain hose to the washer drain/elbow as shown in picture "A". Secure with plastic ties supplied.

- **CAUTION:** Do not over-tighten plastic ties pinching or causing a restriction in the drain hose.

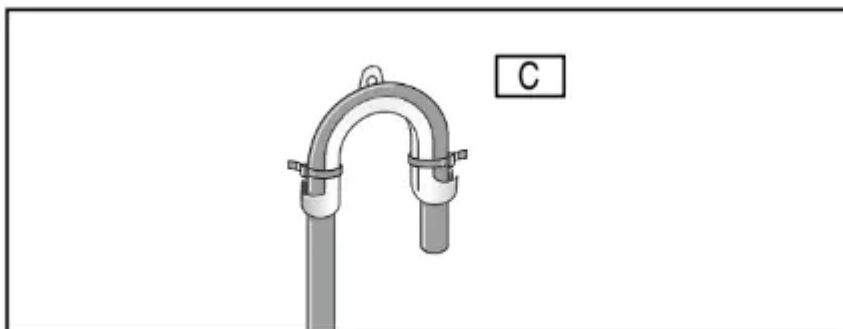


2. Place drain hose assembly into standpipe as shown in picture "B".



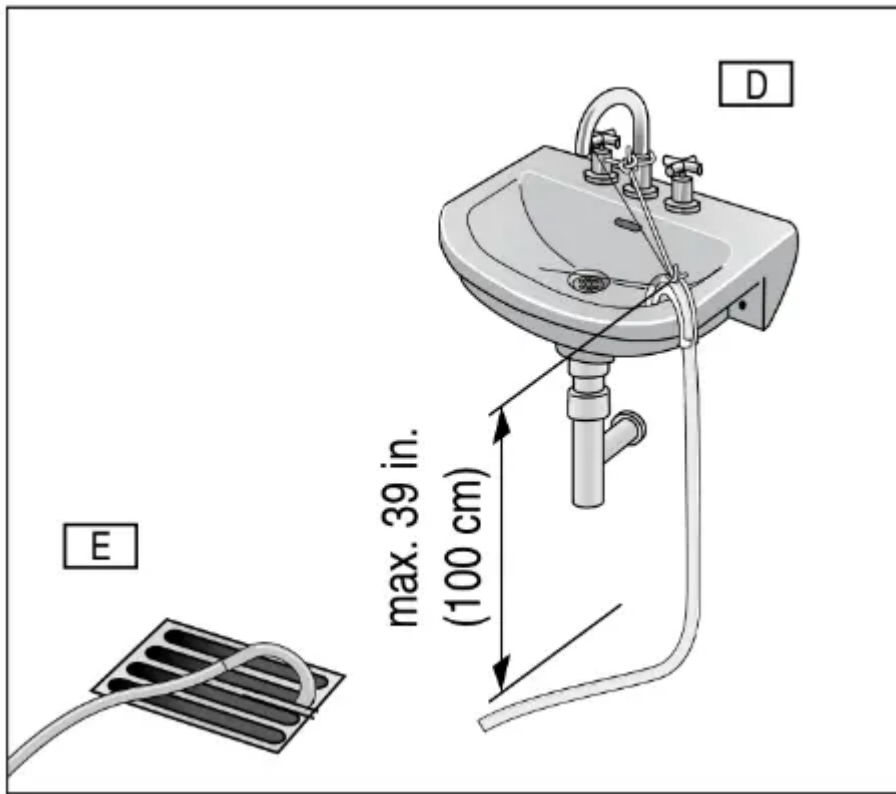
- Sink/Basin or Floor drain:

If using the elbow supplied on the hose re-position the elbow closer to the drain end of the hose and fasten it with the plastic ties as shown in picture "C".



Secure the hose and/or elbow as shown below. Sink "D" or floor "E".

**NOTICE:** Examples shown are for reference only. Not all fittings, connectors, nuts, brackets, ties, etc. are supplied to accommodate every application.

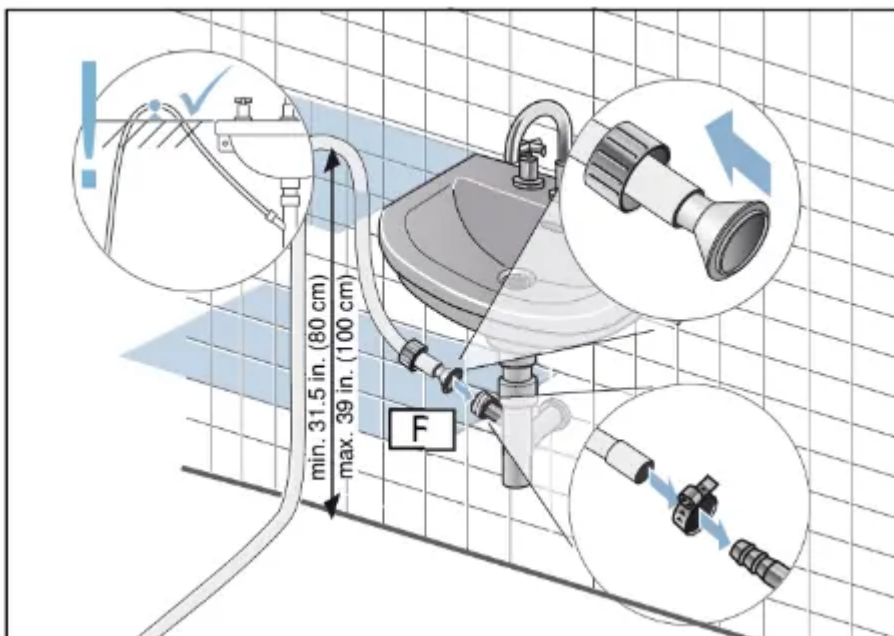


The maximum height of the drain is 39 in. (100 cm).

- Sink Drain Pipe:

Attach and secure the drain hose as shown below in picture “F”.

Use a standard hose clamp which can be purchased from your local hardware store.

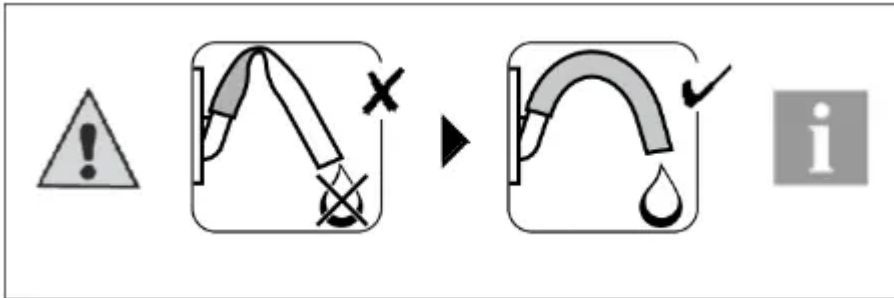


The minimum height of the drain for installation shown above is 31.5 in. (80 cm). The maximum height of the drain is 39 in. (100 cm).

**NOTICES**



- The examples shown are for reference only. Not all fittings, connectors, nuts, brackets, ties, etc. are supplied to accommodate every application.
- Ensure there are no kinks or crimps along the entire length of the hose.



- If installed on an upper floor of a multi-story building, the dryer should be installed on a drained floor to prevent water damage to lower floors in the event of a leak.

## Electrical Connections

### Power Cord

The attached power cord is a standard 4-wire dryer cord and is UL approved and listed in the USA and Canada. It meets the following requirements:

- 208-240 volt rated (minimum);
- 30 amps;
- Type SRDT or DRT (UL 2158).

**NOTICE:** If your specific installation requires a 3-wire power cord follow the installation instructions for such in the next section of this manual.

### ALL ELECTRICAL CONNECTIONS AND CIRCUITS

#### WARNING:

#### ELECTRIC SHOCK HAZARD

- Do not pull on the power cord to unplug the dryer.
- Protect the power cord from physical damage such as being twisted, kinked, pinched, or walked on for example.
- DO NOT use an extension cord or an adapter to connect the dryer to the power supply.
- Make sure:
  - The power cord fits into the outlet/receptacle.
  - The home's internal power supply circuit wire size is sufficient and electrically grounded.
- The outlet/receptacle to power the dryer must be connected to an individual 30 amp Branch Circuit.
- Do not cut, remove or bypass the grounding prong on the power cord end.

- Do not modify the plug provided with the appliance; if it will not fit the outlet, have a proper outlet installed by a qualified electrician.
- The power cord must only be replaced by a qualified technician or licensed electrician to help avoid a fire/electric shock hazard. Replacement power cords can be purchased through our Customer Service department.
- Use only a UL-listed 30 amp power cord.
- Do not reuse old power cords.
- Do not make a sharp bend or crimp wiring or conductors at connections.
- Use only a 4-wire/conductor power cord when the appliance is installed in a mobile home, recreational vehicle, in a new branch-circuit installation, or where the local codes do not permit grounding through the neutral.

**WARNING**

**ELECTRIC SHOCK HAZARD**

To reduce the risk of electrical shock:

- Only pull out the power cord by the plug end and never by the cord, as this could damage it.
- Never touch or hold the plug end or power cord with wet hands.
- Never unplug the plug end during operation.

**WARNING**

**ELECTRIC SHOCK HAZARD**

Improper connection of the equipment-grounding the conductor may result in electric shock. Have the appliance checked by a qualified technician or licensed electrician if you are in doubt as to whether the dryer has been properly grounded.

**GROUNDING INSTRUCTIONS**

**WARNING**

**ELECTRIC SHOCK HAZARD**

This appliance must be electrically grounded. In the event of malfunction or breakdown, grounding will reduce the risk of electric shock by providing a path of least resistance to electric current.

This appliance is equipped with a cord that has an equipment grounding conductor and a grounding plug.

The plug must be plugged into an appropriate outlet that is properly installed and grounded in accordance with all local codes and ordinances.

If a ground fault circuit breaker is used, ensure it has this symbol: .

Only this symbol can assure compliance with all current regulations.

**SAVE THESE INSTRUCTIONS!**

**Connecting a 3-wire power supply cord**

**WARNING**



## ELECTRIC SHOCK HAZARD

To reduce the risk of fire, electric shock, serious injury, or death follow the installation instructions below carefully or have work done by a qualified electrician.

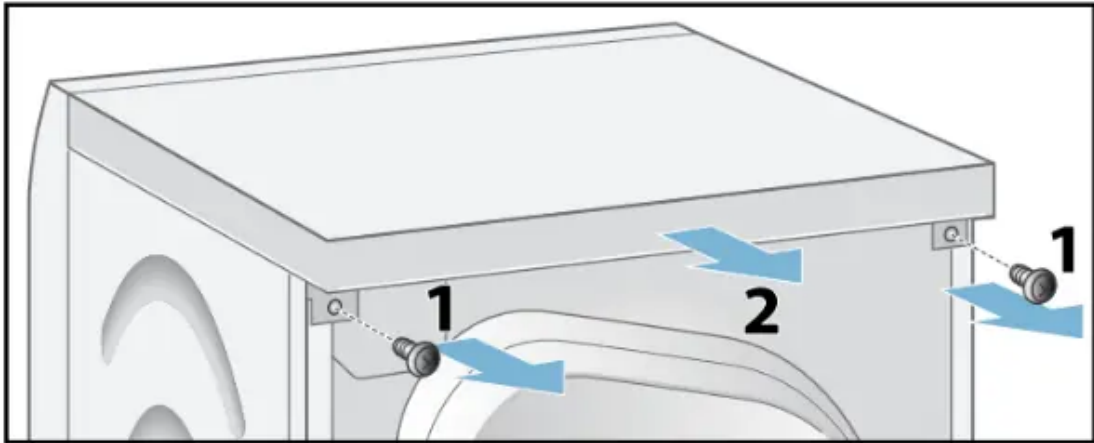
The power cord must meet the following requirements:

- 208-240 volt rated (minimum);
- 30 amps;
- Type SRDT or DRT (UL 2158).

1. Unplug the current power cord being used from the outlet/receptacle.
2. To disconnect and/or reconnect a new power cord you must remove the top cover of the appliance as shown below.

**A.** Remove the two T20 Torx head screws.

**B.** Push the top cover toward the rear of the appliance and lift it up.



3. Open the connection box toward the rear of the appliance by removing the T20 Torx head screw and fastening the cover.

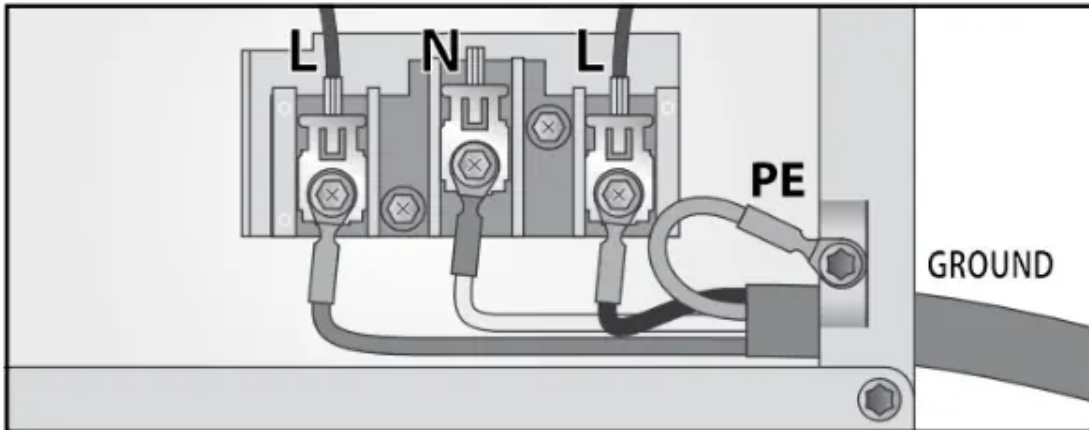


4. Remove the 4-wire power cord (as supplied):

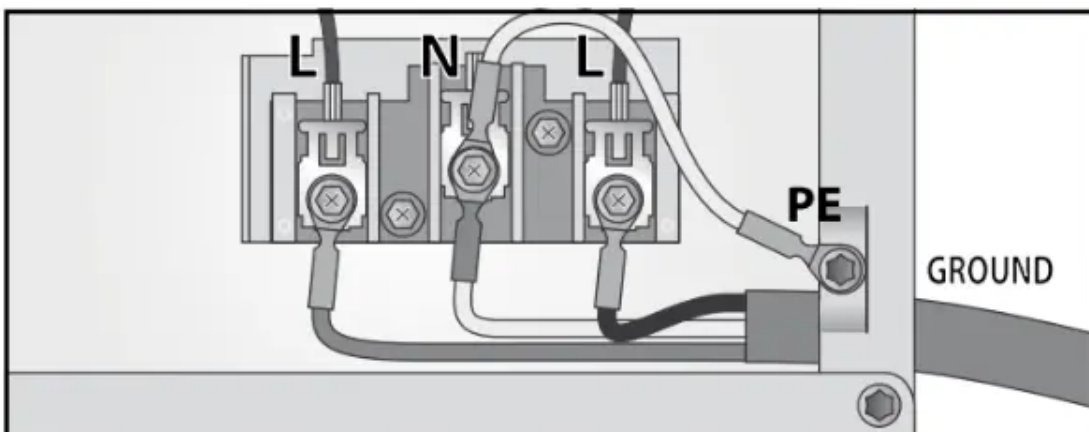
**A.** Remove the 3 Philips screws (2 labeled **L** and one labeled **N**).

**B.** Remove the green grounding screw **PE** (T20 Torx).

**NOTICE:** Be careful not to drop the screws into the dryer.



5. Loosen the strain relief clamp screw (Philip's head) on the rear of the connection box.
6. Pull the old power cord out of the connection box.
7. Install the new power cord back through the strain relief clamp.  
**NOTICE:** Ensure the strain relief clamp has not been moved and its clamping screw(s) are outside the rear of the connection box.
8. Ensure the terminal ends are long enough and are formed (bent) so that no part of them (wires or terminal ends) come in contact with the connection box enclosure.  
**NOTICE:** Use only open-end spade lugs.
9. Ensure the terminal ends are long enough and are formed (bent) so they will align with the terminal block fastening locations (screw holes).
10. Reinstall the 2 terminal block screws (Philip's head) at location **L** as shown below.
11. If the ground wire shown below from **N** to **PE** is not part of the 3-wire cord assembly you have it must be obtained/purchased separately and **it must be installed**.
12. Install the last terminal block screw (Philips) and 1 grounding screw (T20 Torx) at locations **N** and **PE**.



13. Tighten the strain relief screw ensuring the power cord cannot be pulled out of the connection box but not so tight as cutting the power cord insulation.
14. Reinstall the connection box cover making sure all wires are routed so they do not touch any part of the enclosure and are secure.
15. Reinstall the appliance top cover as previously described in “2” above.

### Integrated electrical receptacle

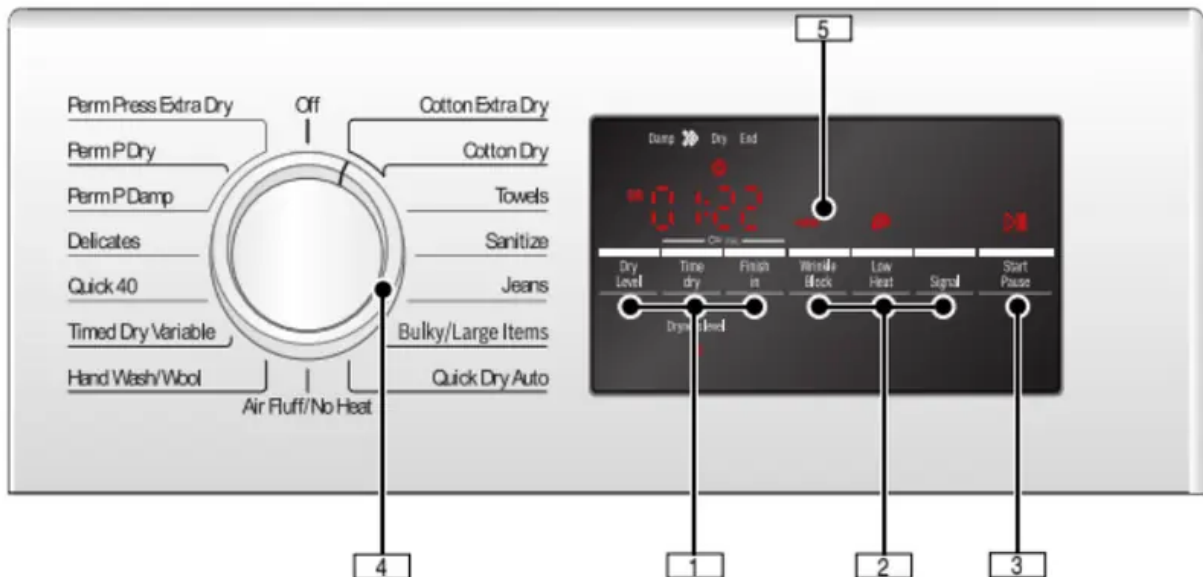
This appliance is equipped with a 208/240V 15A receptacle for use ONLY with a Bosch washer.

**CAUTION:** Do not use this receptacle to power any other device.

If any other electrical device is plugged into this receptacle Bosch assumes no liability.

**CAUTION:** Use integrated electrical receptacles only for 208/ 240V Bosch washers.

### Control panel



#### 1. Dry Level, Time dry, Finish in

Selectable Option Settings for customizing Pro- grams as desired.

Indicator Symbol lights or desired time are displayed if the setting is active.

#### 2. Wrinkle Block, Low Heat, Signal

Additional option settings.

Indicator Symbol lights if the setting is active.

#### 3. Start/Pause

- starts or pauses the selected cycle;
- the indicator lamp on (steady) - cycle running, can be paused;
- indicator lamp blinking - options can be changed; the cycle can be started; the door is closed; the cycle is in Pause mode.

#### 4. Program Selector

Selecting a program and switching it on/off; turns in both directions.

#### 5. Display area for settings and information.

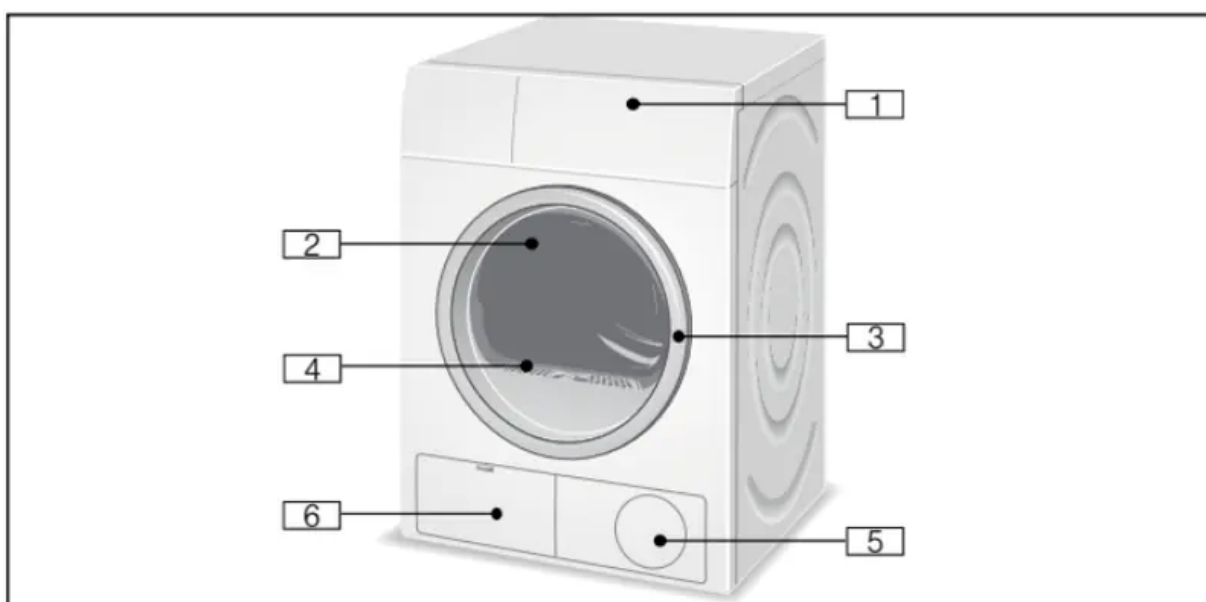
## Operating Instructions

### WARNING

RISK OF FIRE, ELECTRIC SHOCK, OR INJURY

To reduce the risk of fire, electric shock, or injury to persons, read the IMPORTANT SAFETY INSTRUCTIONS and Operating Instructions before operating this appliance.

### Your new dryer



1. Control panel, display area, program selector

2. Drum with interior light (depending on model)

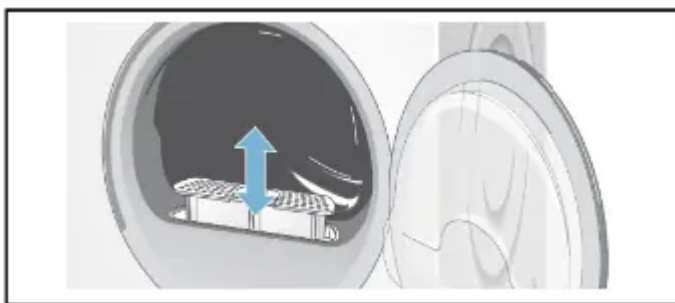
The interior light activates after the door is opened and after the program starts, it switches off automatically.

3.

Open the door. Close the door



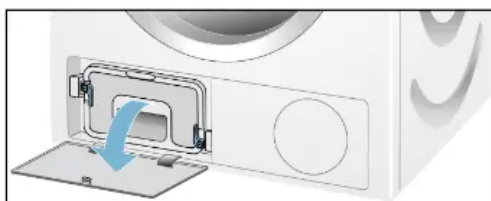
4.



Lint filter

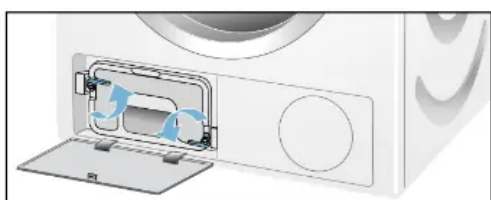
5. Air inlet

6. Open the maintenance flap



Heat exchanger

Close the maintenance flap



### WARNING:

BEFORE INSTALLING OR USING YOUR DRYER

Read and follow all installation and operating instructions.

### Before using the dryer for the first time

1. Read these operating instructions carefully.
2. Check that the supply voltage corresponds with the voltage specifications on the rating plate on the dryer, see the top rear side of the dryer and the rating plate label inside of the dryer door. -> Electrical Connections
3. Remove all objects from the drum.
4. Check the dryer for visible damage. If damage is found contact your dealer.
5. Wipe the inside of the drum with a damp cloth.
6. Check the heating system.
  1. Check that the drum is empty.
  2. Close the dryer door.
  3. Switch the dryer to **Cotton Extra Dry** and then touch the **Start/Pause** button.

4. After 2-3 minutes touch the **Start/Pause** button and open the door.
  - If the interior of the dryer feels warm, the dryer has been connected properly. Switch the dryer to **Off**.
  - If the dryer does not work, switch the dryer to **Off**. Look in the Troubleshooting section of this user manual for hints on solving the problem.
7. If the dryer does not work, switch the dryer to **Off**.  
Look in the Troubleshooting section of the operating instructions for support. -> Troubleshooting.

## Using the program selector to choose a drying cycle

**NOTICE:** If the Child lock is activated, you must deactivate it before you can select a program.

-> Childproof lock

You can secure the dryer against inadvertent changing of the set functions. To do this, activate the childproof lock after the cycle start.

To **Activate/Deactivate**, touch the Time dry and Finish buttons at the same time for 3 seconds. In the display field, you will see the D symbol light indicating the childproof lock is active.

**NOTICE:** The childproof lock will remain activated until the next cycle starts even after switching the machine off. You must deactivate the childproof lock before the next cycle and, if necessary, activate it again after starting the cycle.

Use the program selector to select the desired drying program. The dial turns in both directions and when a cycle is selected its time duration appears in the display.

## Cleaning and maintenance

### USER-MAINTENANCE INSTRUCTIONS

Your appliance is designed to give you years of service. Observe the following instructions to maintain your appliance and keep it in top operating condition.

#### WARNING

##### RISK OF EXPLOSION

Never use solvents or highly flammable liquids for cleaning.

#### CAUTION

Improper cleaning may damage the dryer or cause injury.

Do not spray with a hose or pressure washer.

Do not use scouring agents or all-purpose cleaners.

Do not use steam cleaners.

Do not use bleach-based wipes.

## Cleaning the housing and control panel

Wipe the housing and fascia with a soft cloth and soapy water only.

Wipe the drum, door seal, and inside of the door with a damp cloth only.

**NOTICE:** Do not clean with a water jet. Remove detergent and cleaning agent residue immediately.

During drying, water may occasionally accumulate between the window and the seal. This does not affect the proper operation of your dryer.

## Cleaning the lint filter area


Over time, lint from the drying process collects in the lint filter area. This lint can be easily removed using a vacuum cleaner.



## Cleaning the lint filter

A dirty filter extends the drying time and increases energy consumption.

The filter should be cleaned before or after each drying process.

If  indicator lights up during a drying program, clean the filter immediately.

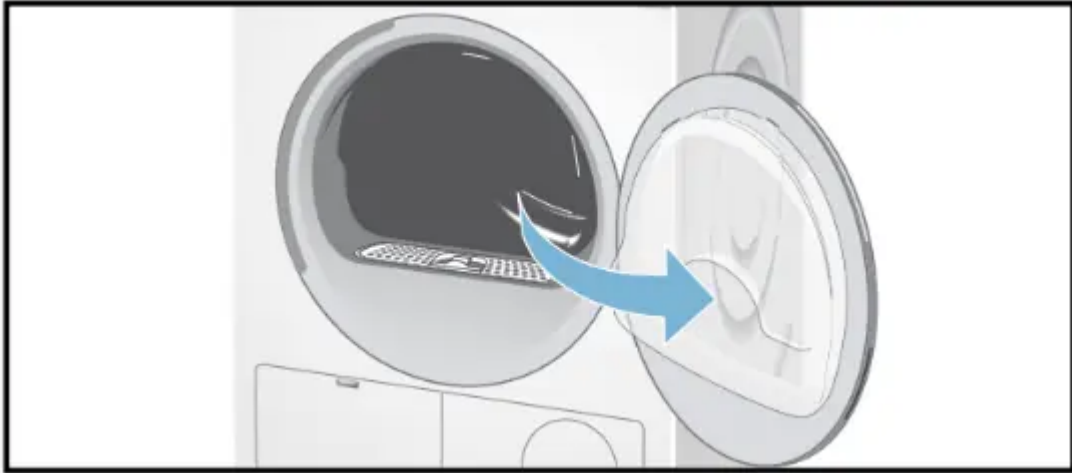
**Tip:** The program interrupts automatically.

### To clean the lint filter:

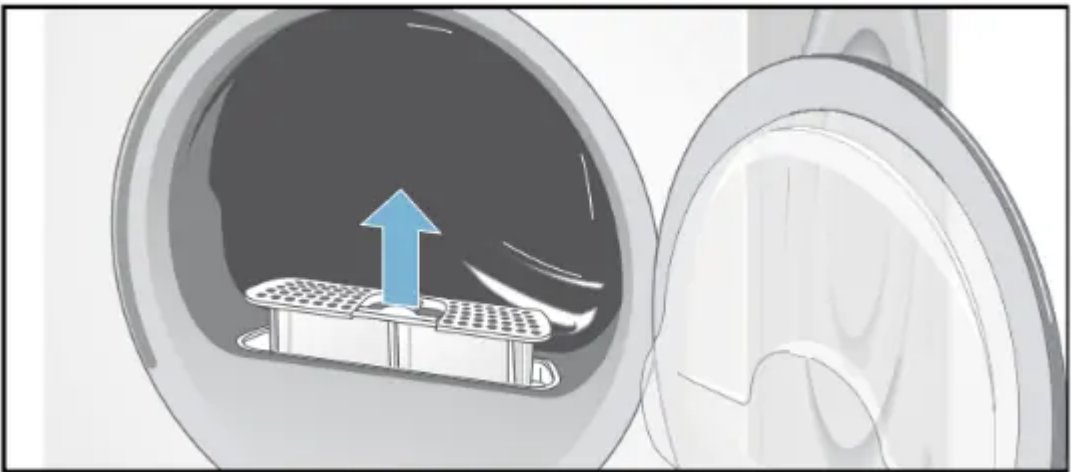
1. Press the center of the Program Selector to switch off the appliance.

**CAUTION:** The inside of the door heats up during the drying process. The drum, the door, and the laundry may be hot.

2. Open the door.

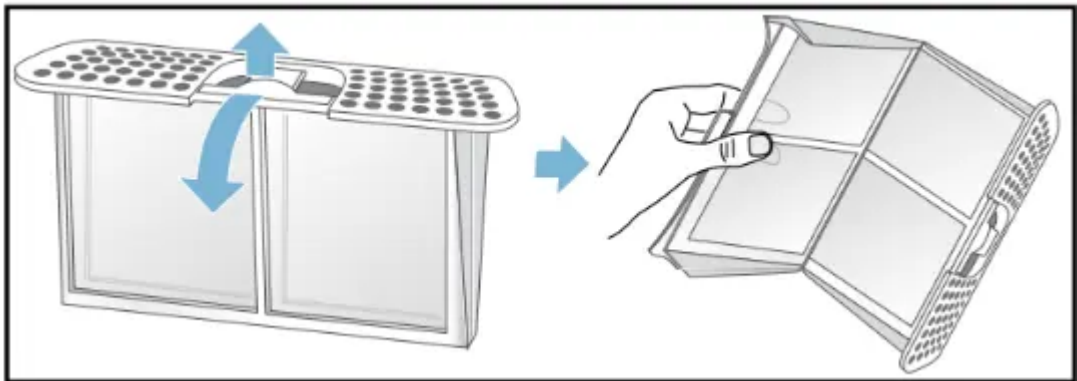


3. Pull out the filter.

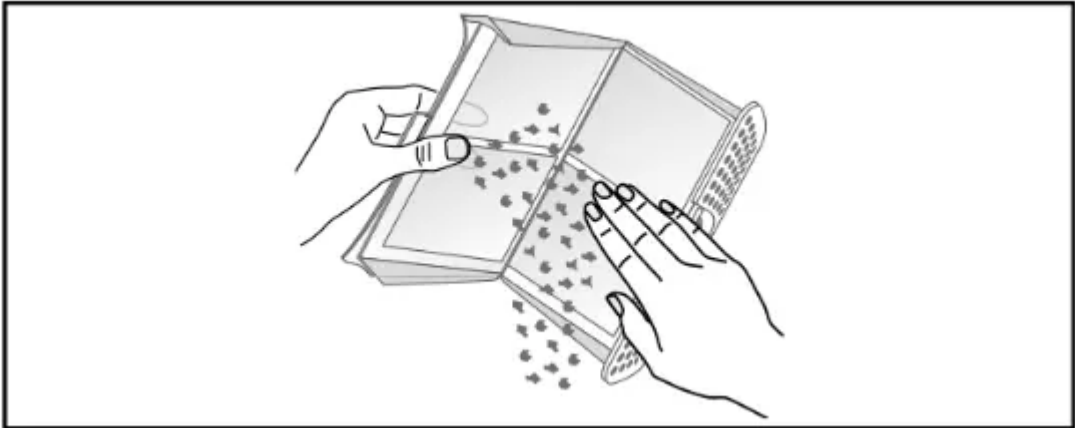


Remove the fluff from the fluff filter recess. Ensure that no fluff falls into the open shaft.

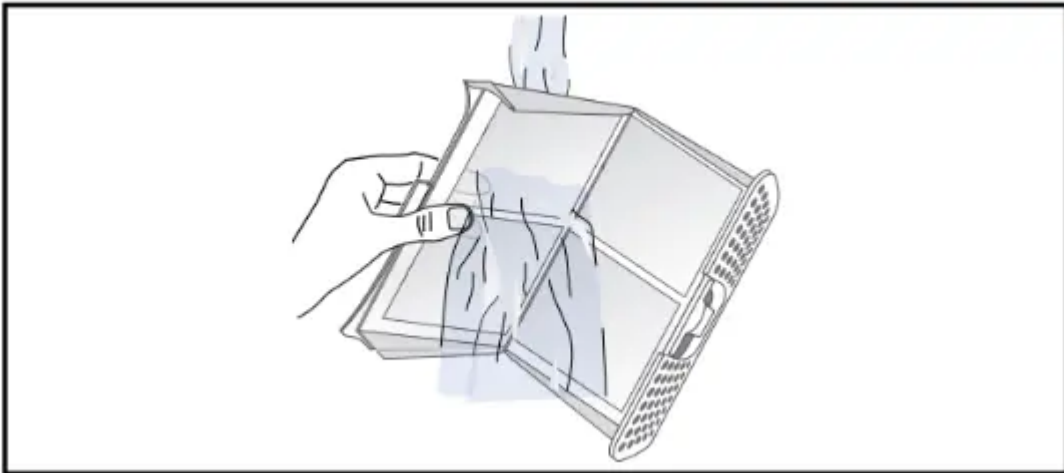
4. Open the filter.



5. Remove fluff (run hand over filter).



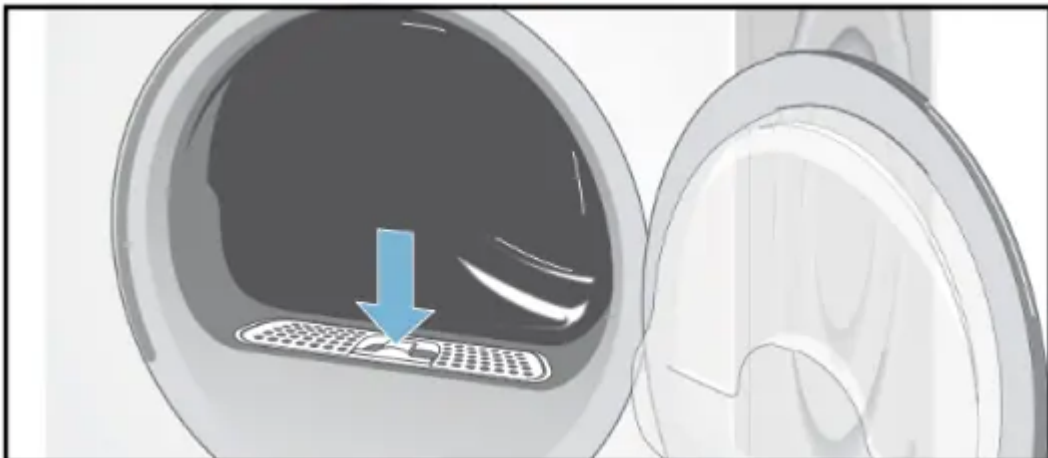
**NOTICE:** Severely dirty or clogged lint filters should be rinsed under warm running water.



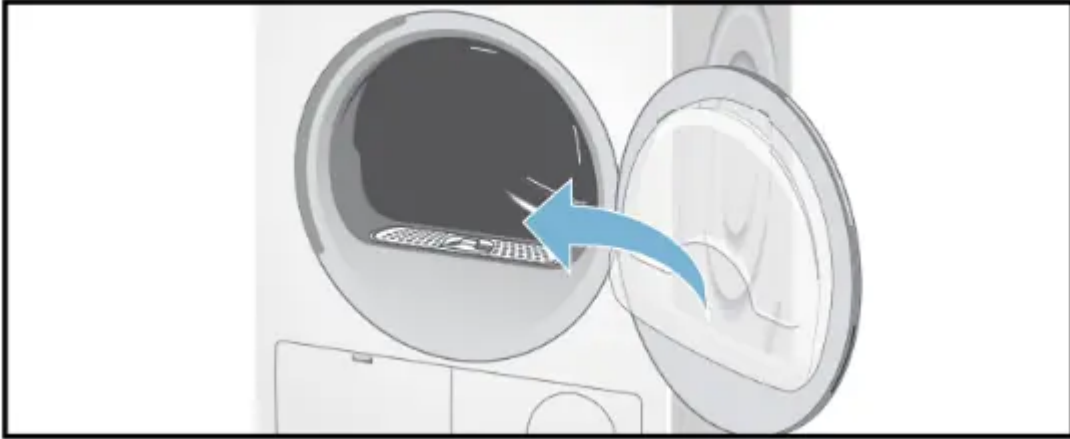
The

filter must be dried thoroughly before being placed back into the dryer.

6. Close the filter and re-insert it.



7. Close the door.

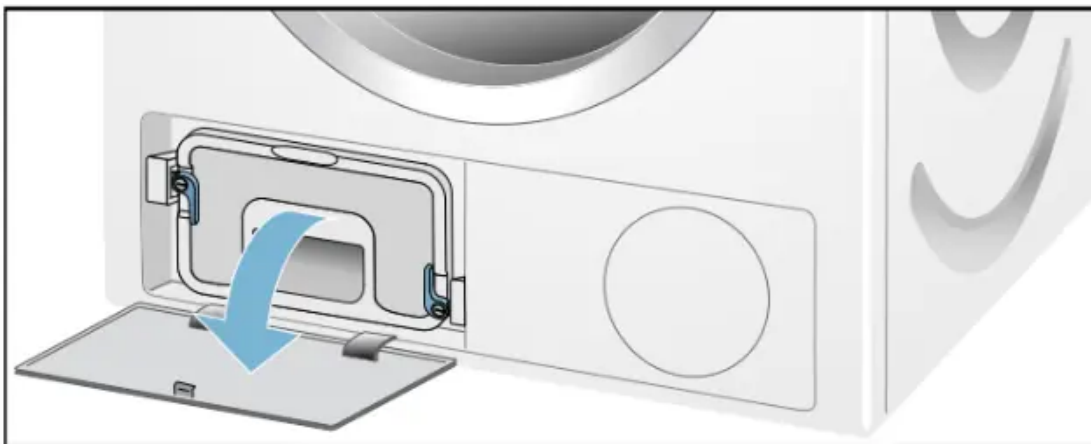


### Cleaning the heat exchanger

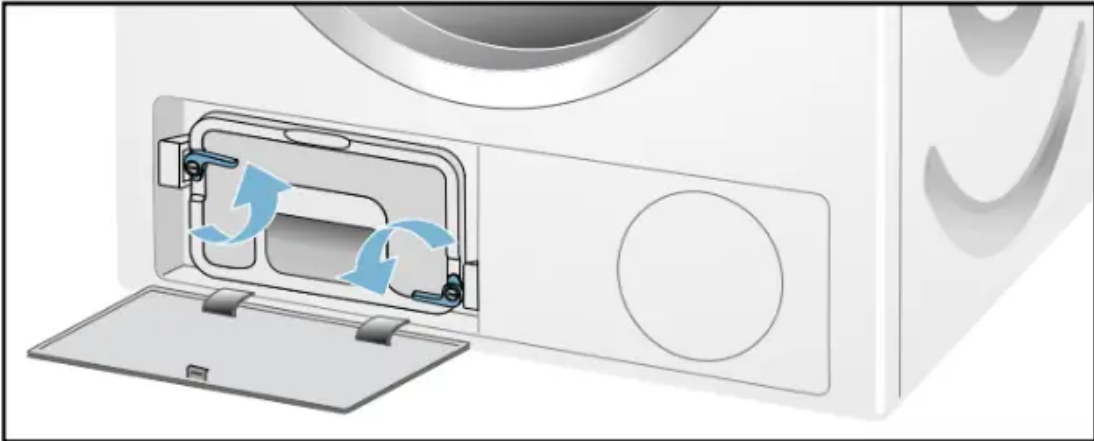
The heat exchanger requires periodic cleaning (recommended once per month under normal drying conditions). The frequency of cleaning depends on the amount and type of loads being dried.

#### To clean the heat exchanger:

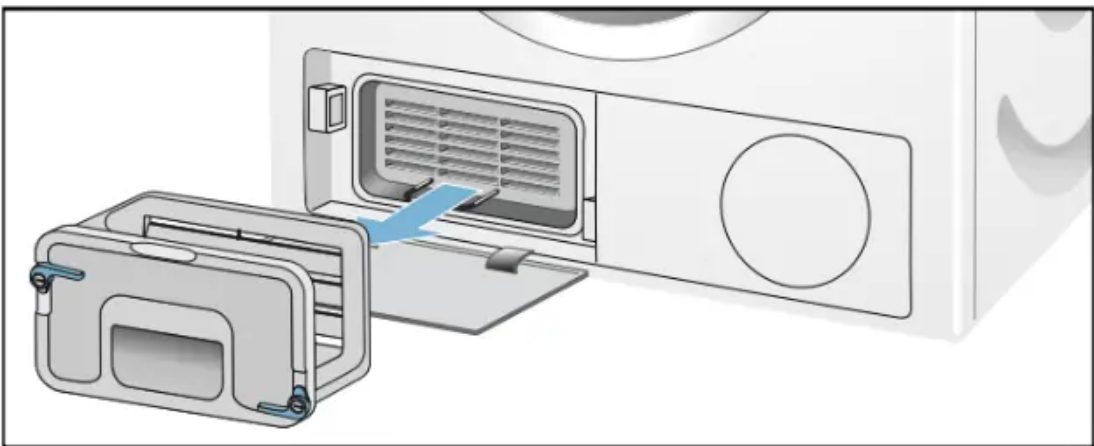
1. If the dryer is hot, run on **Air Fluff/No Heat** program to allow the dryer to cool down.
2. Residual water may escape, place an absorbent cloth under the maintenance flap.
3. Unlock the maintenance flap and open it completely.



4. Turn both locking levers towards each other.

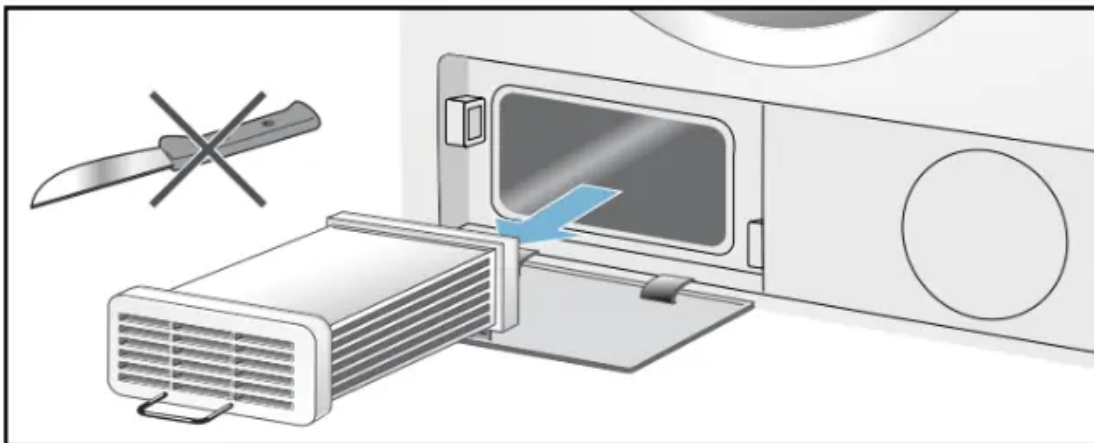


5. Pull out the heat exchanger cap.

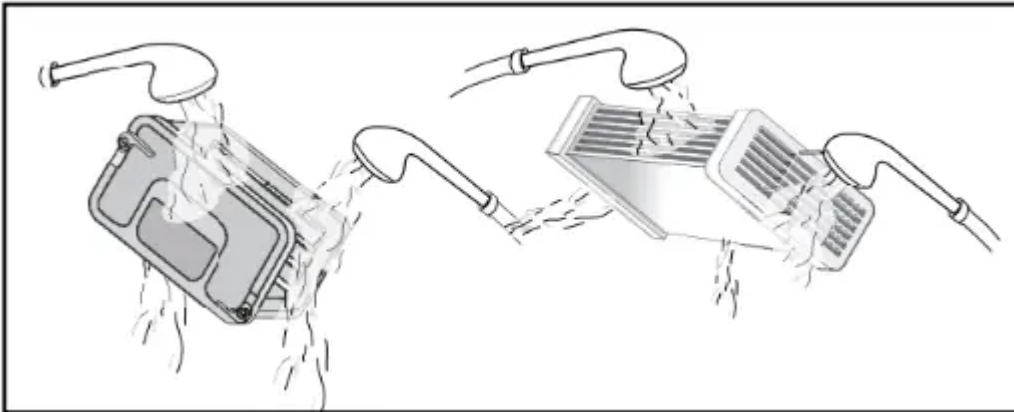


6. Remove the heat exchanger.

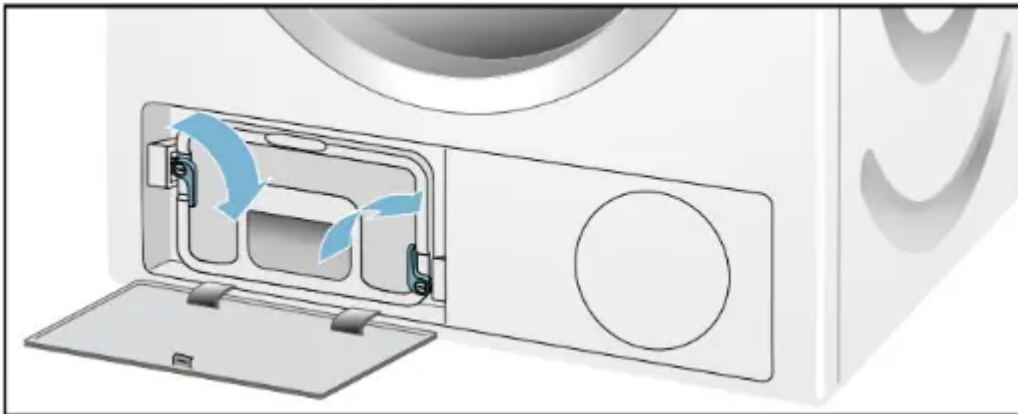
**NOTICE:** Do not damage the heat exchanger! Clean with warm water only. Do not use hard or sharp-edged objects!



7. Rinse the heat exchanger and the cap on all sides with a jet of water to completely remove all of the lint and fluff.



8. Remove all lint and fluff from the dryer and heat exchanger seals.
9. Allow the cap and the heat exchanger to dry fully.
10. First insert the heat exchanger, then the cap.
11. Turn back both locking levers.



12. Close the maintenance flap until it locks into position.



13. Look in the Troubleshooting table to reset the maintenance indication.

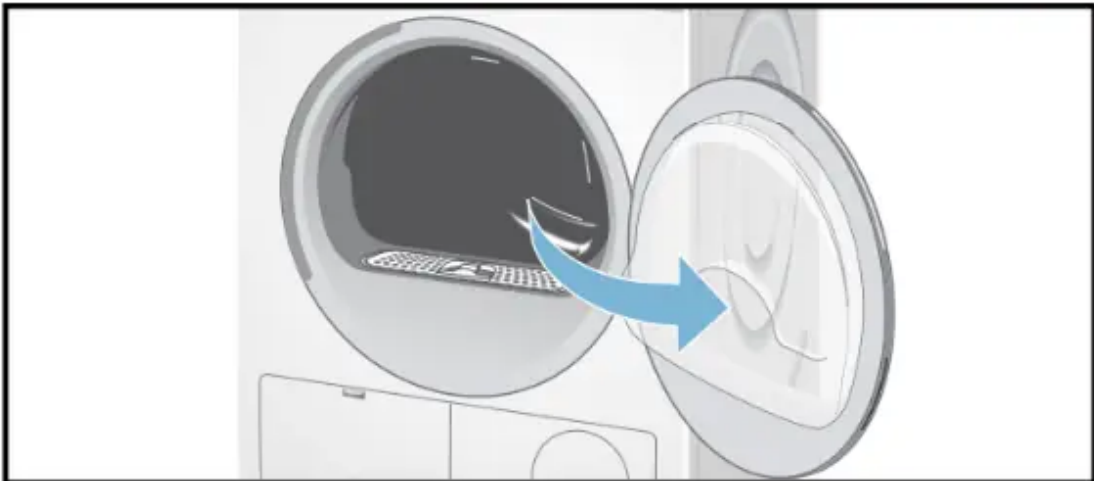
## Cleaning the moisture sensors

The dryer is equipped with a stainless-steel moisture sensor. The moisture sensor measures how damp the laundry is.

After long periods of usage the moisture sensor may become covered by a fine layer of limescale or residues of detergents and textile care products. Such residues must be removed regularly as the sensor function and in consequence, the drying result may be impaired.

**To clean the moisture sensors:**

1. Open the door.



2. The deposit on the sensors can easily be removed by wiping the sensors (the two bars next to the lint filter) with a cloth and a little white vinegar.



**NOTICE:** Use white vinegar only! Clean the moisture sensors once a month.

## Maintenance of drain hose

If the **DR** indicator lights up check the drain hose for kinks, restrictions, or blockage.

**NOTICE:** If the **DR** indicator still lights up after the maintenance, you should contact customer service or your local dealer.

# Troubleshooting

## Introduction

**NOTICE:** Before doing maintenance work or trying to fix a problem, rotate the program selector to **Off**.

If the power supply is interrupted during operation, the program will not continue when power is restored. When power is restored, confirm program and selected options are as desired, and then press the Start/Pause button.

### **WARNING**

RISK OF INJURY TO SKIN

The door, the drum, and the laundry may be hot.

### **WARNING**

RISK OF ELECTRIC SHOCK! EXPLOSION HAZARD

Repairs or replacement of parts should be carried out by authorized technicians only.

Before calling customer service, check whether you can rectify the fault yourself by means of the following table.

If a fault cannot be rectified or a repair is required:

1. Set the program selector to **Off**.
2. Disconnect the dryer from the power outlet.
3. Call customer service.

## General Troubleshooting

Often when you encounter a problem it will be something minor. Before you call customer service, consider the suggestions and instructions below:

**NOTICE:** The troubleshooting items listed below can help you resolve minor issues with your dryer quickly and without the necessity of a service call.

### **The dryer does not start. The Start/Pause indicator light does not illuminate.**

- The power cord ends were not inserted at all or not inserted correctly.
  - Insert the power cord end correctly.
- A fuse is blown or the breaker is tripped.
  - Replace the fuse or reset the breaker.
- The **Start/Pause** button is not touched.
  - Touch the **Start/Pause** button.

- The door was not closed properly.
  - Check if laundry is caught in the door. Close the door until a click is heard.
- Program not selected.
  - Rotate the program selector to the desired program.

**The display panel and indicator lights go out, Start/Pause indicator light flashes.**

- Energy-saving mode is activated.
  - Touch any button to activate the display.

**The display panel and Start/Pause indicator switch off.**

- Sleep mode after setting the Finish in option is activated.
  - Touch any button to activate the display.



**indicator light up.**

- The Lint filter is dirty.
  - Clean lint filter. Touch the **Start/Pause** button to reset the displayed indication and then touch the **Start/Pause** button again to reset the appliance if necessary.
- The heat exchanger is dirty.
  - Clean heat exchanger. Touch the **Start/Pause** button to reset the displayed indication and then touch the **Start/Pause** button again to reset the appliance if necessary.

**DR indicator light up. The water has not drained completely.**

- The drain hose is blocked.
  - Check the drain hose. Check drain hose connection conditions.

**Water is leaking out.**

- The dryer is not leveled.
  - Level the dryer.
- The heat exchanger seal is dirty.
  - Clean the heat exchanger seal.
- The drain hose is leaking.
  - Check the entire length of the drain hose for leaks; replace it if necessary. Check that hose is clamped on the hose barb at the back of the dryer securely.

### **The program terminates shortly after starting.**

- The laundry is not loaded.
  - Load the laundry.
- The load is too small for the selected program.
  - Use the time program.
- The loaded laundry is too dry.
  - Check the loaded laundry. If it is dry, open the door, remove the laundry and turn the program selector **Off**.

### **The door opens by itself.**

- The door was not closed properly.
  - Close the door until a click is heard.

### **Creasing.**

- Laundry load exceeded. Unsuitable program selected.
  - Do not exceed the maximum load for the selected program. Remove items of laundry immediately after the end of the program, hang them up and pull them into shape. Turn the program selector **Off**. Select the Wrinkle Block button to prevent the laundry from creasing or wrinkling.

### **The drying result is not satisfactory (the laundry feels too damp).**

- Warm laundry may feel damper than it really is.
  - Remove items of laundry immediately after the end of the program and turn the program selector **Off**.
- The selected program does not suit the load.
  - Use another drying program or, in addition, select the time program.
- The dryness level is not adjusted.
  - Use **Dry Level** to adjust the dryness level.
- Fine layer of limescale or detergent and textile care products residues on the moisture sensors.
  - Clean the moisture sensors.
- Program termination e.g. main power supply failure, door open, or maximum drying time reached.
  - See the problem(s) mentioned in this table.

- The initial load is too wet.
  - Spin laundry at a higher speed in the washing machine, before drying. Switch off the dryer, and then turn it on again.

**The drying time is too long.**

- The Lint filter and/or Heat Exchanger are dirty.
  - Clean lint filter and/or Heat Exchanger.
- Insufficient supply of air. The Air inlet is possibly blocked.
  - Ensure that air can circulate. Do not obstruct the air inlet on the front of the dryer.
- Ambient temperature higher than 95°F/35°C.
  - Ventilate the room.

**The program does not start Finish in (remaining) time is displayed.**

- A delayed starting time has been selected and activated.
  - The drying cycle will begin at the proper time to complete the selected Finish in time.

**The program does not start -  symbol lit up.**

- The childproof lock is activated.
  - Deactivate Childproof lock.

**One or more indicator lights are flashing.**

- The Lint filter or/and heat exchanger are dirty.
  - Clean lint filter or/and heat exchanger (see solution of the problem(s) in this table above).
- Installation conditions are not adequate.
  - Check the installation conditions.
- Fault in program sequence or malfunction.
  - Switch off the dryer, allow it to cool down, switch it back on and restart the program.

**Power failure.**

- Remove laundry from the dryer immediately and spread it out. This allows the heat to dissipate. Be careful as the door, the drum, and the laundry may be hot.

**Warning**

This content is compiled from multiple sources and is provided for reference purposes only. It may not be complete or fully applicable to all situations. If you are unable to resolve your issue, please contact the product manufacturer or an authorized service provider for official support.

---

Document generated by [ManualsFile](#)