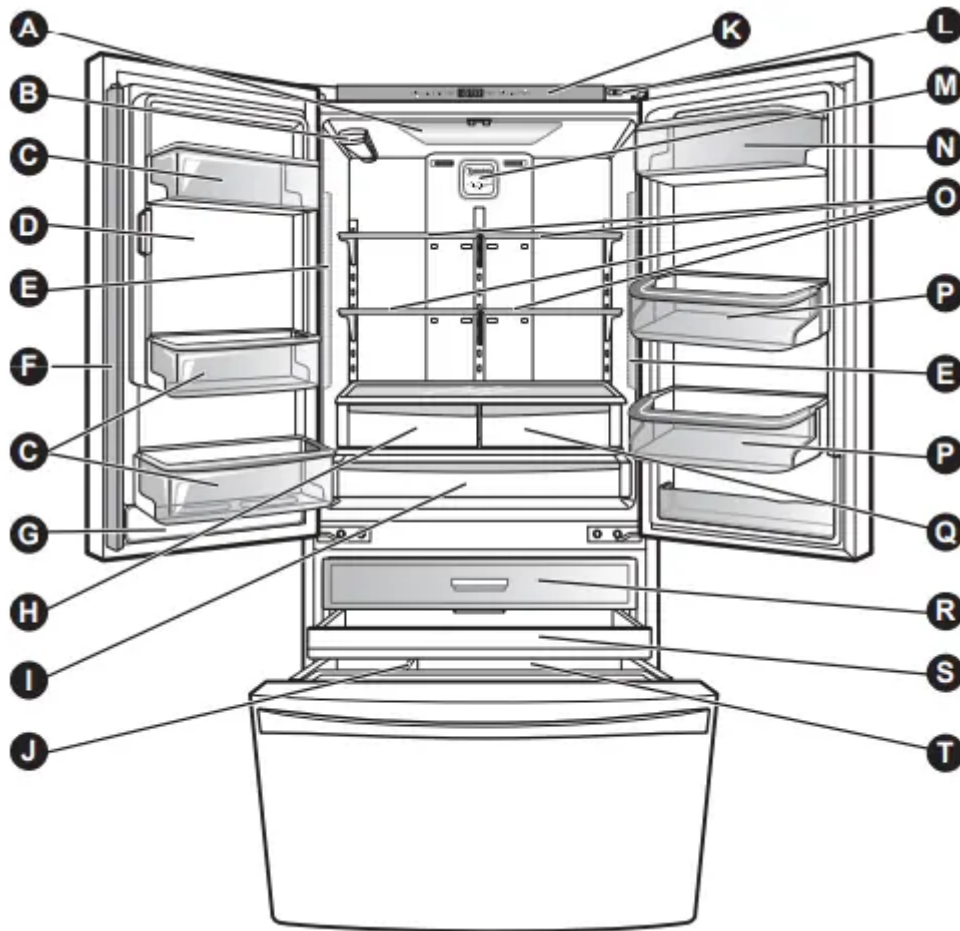


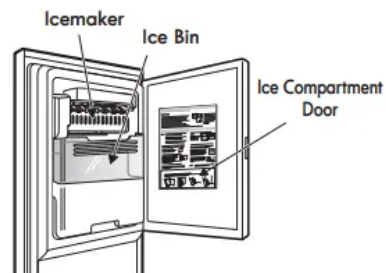
## PARTS AND FEATURES



Use this page to become more familiar with the parts and features of your refrigerator.

NOTE: This guide covers several different models. The refrigerator you have purchased may have some or all of the items listed below. The locations of the features shown below may not match your model.

- |   |                                   |
|---|-----------------------------------|
| <b>A</b> Refrigerator Light                     | <b>K</b> Control Panel            |
| <b>B</b> Water Filter                           | <b>L</b> Kenmore Connect™ Speaker |
| <b>C</b> Fixed Door Bins                        | <b>M</b> Air Filter               |
| <b>D</b> Ice Compartment (Icemaker and Ice Bin) | <b>N</b> Adjustable Dairy Bin     |
| <b>E</b> Refrigerator Light (side)              | <b>O</b> Refrigerator Shelves     |
| <b>F</b> Articulating Mullion                   | <b>P</b> Adjustable Door Bins     |
| <b>G</b> Water Tank Cover                       | <b>Q</b> Air Tight Crisper        |
| <b>H</b> Humidity Controlled Crisper            | <b>R</b> Top Pullout Drawer       |
| <b>I</b> Temperature Controlled Pantry Drawer   | <b>S</b> Middle Pullout Drawer    |
| <b>J</b> Durabase Divider                       | <b>T</b> Durabase                 |



# USING YOUR REFRIGERATOR

## SETTING THE CONTROLS

### Temperature

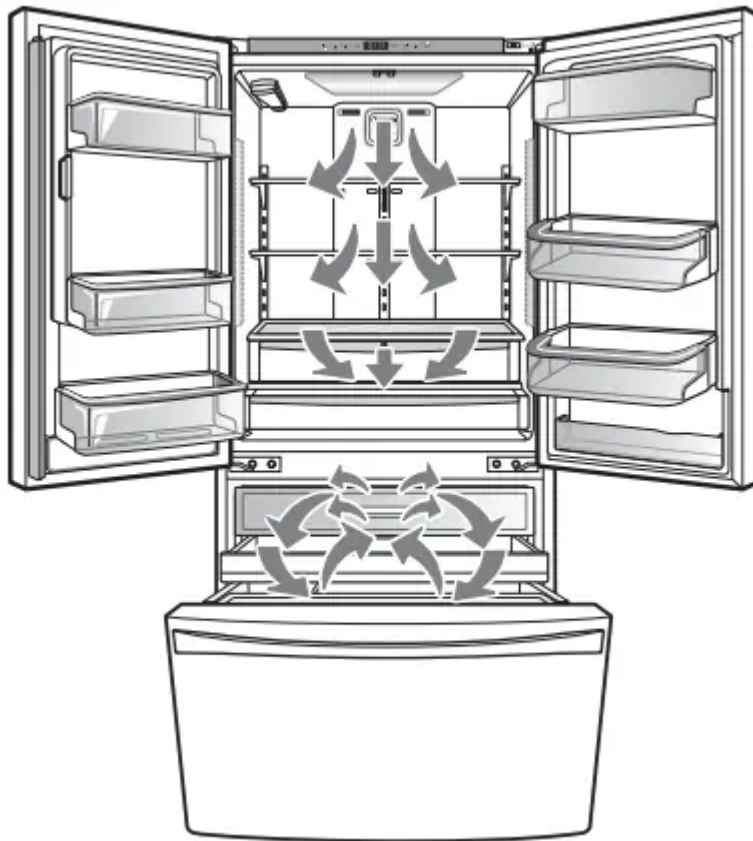


- The Refrigerator Temp Control ranges from 33°F to 46°F (1°C to 8°C). Press the refrigerator temp button to cycle through the available temperature settings one increment at a time.
- The Freezer Temp Control range is from -6°F to 8°F (-21°C to -13°C). Press the freezer temp button to cycle through the available temperature settings one increment at a time.

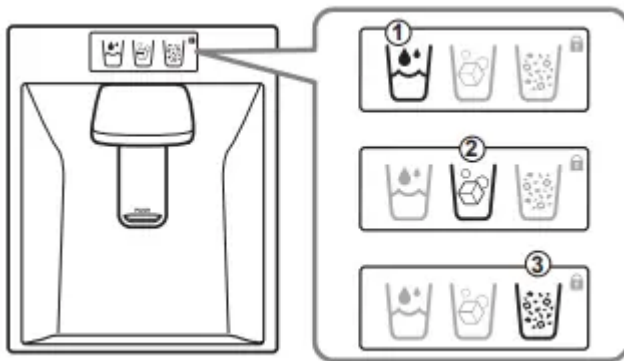
**NOTE:** When changing control settings, wait 24 hours before making additional adjustments. The controls are set correctly when milk or juice is as cold as you would like and when ice cream is firm. If the temperature in either compartment is too cold or too warm, change the setting one increment at a time. Wait 24 hours for the change to stabilize before adjusting again.

### Airflow

Be sure not to block vents while packing your refrigerator. Doing so will restrict airflow and may cause the refrigerator temperature to become too warm or cause interior moisture buildup. (See air flow diagram below.)



## Dispenser



The dispenser will dispense water, cubed ice or crushed ice. Press the appropriate icon of your choice: ( ① ) water ( ② ) cubed ice ( ③ ) crushed ice. When pressed the icon will illuminate.

**NOTE:** The dispenser will not work if any door is left open or if the control lock is engaged.

**NOTE:** If the Control Lock icon is illuminated, the Dispenser will not work. Disable the Control Lock to use the Dispenser again.

**CAUTION:** The control display is operated by touch. Excessive moisture on the display may cause a malfunction. Please keep the display clean and dry.



## Air Filter

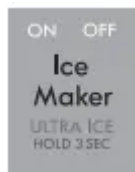
The Air Filter helps remove odors from the refrigerator. The Air Filter has two settings, Auto and Max. In Auto mode, the Air Filter will cycle on and off in increments of ten minutes on and one hundred and ten minutes off. If set to the Max mode, the Air Filter will stay on continuously for four hours, cycling on and off in increments of ten minutes on and five minutes off. After four hours, the Air Filter will switch to Auto mode.

- Auto mode is the default mode.
- Press the Air Filter button once for Max mode.



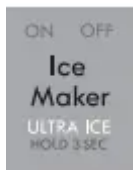
## Air Filter Reset

When the Change icon turns on, the air filter needs to be replaced. After replacing the air filter, press and hold the Air Filter button for three seconds to turn the icon light off. It is recommended to change the air filter approximately every 6 months.



## Ice Maker ON/OFF

- To switch the icemaker ON or OFF, press the Ice Maker button.



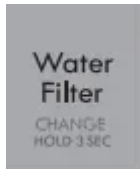
## Ultra Ice

- When you press and hold the Ice Maker button for three seconds, the graphic will illuminate in the display and will continue for 24 hours.

The function will automatically shut off after 24 hours.

**NOTE:** While you are selecting the Ultra Ice function, the Ice Maker icon will briefly switch to OFF, then return to ON. This is normal.

- You can stop this function manually by pressing and holding the button one more time.
- This function increases both ice making and freezing capabilities.



### Water Filter Reset

When the Change icon turns on, you need to change the water filter. After changing the water filter, press and hold the Water Filter button for three seconds to turn the indicator light off. You need to change the water filter approximately every six months.



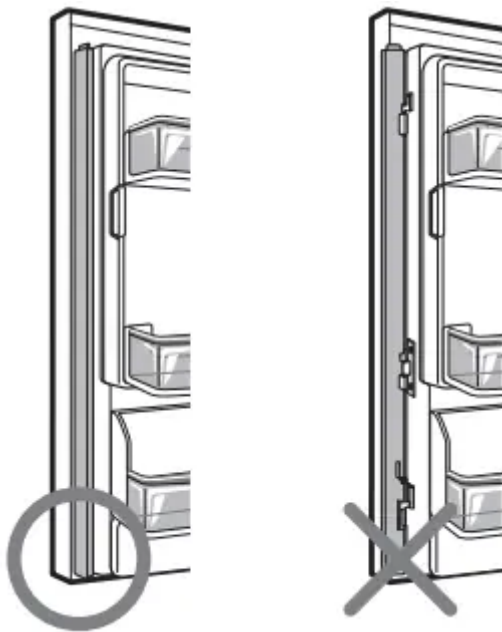
### Dispenser Light

This light has three settings: On, Off and Dim. Select the Dim option at night. The light will automatically turn on at full brightness when the dispenser pad is pushed.

### Articulating Mullion

This feature is a metal strip attached to the left door that articulates (rotates) 90 degrees as the door is closed, forming a mullion (base) for the left and right door gaskets to seal against.

**CAUTION** To reduce the risk of scratching the door or breaking the door mullion, make sure that the refrigerator door mullion is always folded in.



### Door Alarm

- When power is connected to the refrigerator, the door alarm is initially set to ON. When you press the Door Alarm button, the display will change to OFF and the Door Alarm function will deactivate.
- When either the refrigerator or the freezer door is left open for more than 60 seconds, the alarm tone will sound to let you know that the door is open.
- When you close the door, the door alarm will stop.



### Control Lock

- When power is initially connected to the refrigerator, the Lock function is off.
- If you want to activate the Lock function to lock other buttons, press and hold the Control Lock button for three seconds or more. The Control Lock button will illuminate and the Lock function is now enabled.
- When the Lock function is activated, no other buttons will work. The dispenser pad is also deactivated.
- To disable the Lock function, press and hold the Control Lock button for approximately three seconds.

### Temperature Mode Switch Function (°F <->°C)

If you want to convert °F to °C or vice versa, press and hold the Freezer Temp and Refrigerator Temp buttons at the same time for approximately five seconds.

### Demo Mode (For Store Use Only)

The Demo Mode disables all cooling in the refrigerator and freezer sections to conserve energy while on display in a retail store. When activated, OFF will display on the control panel.



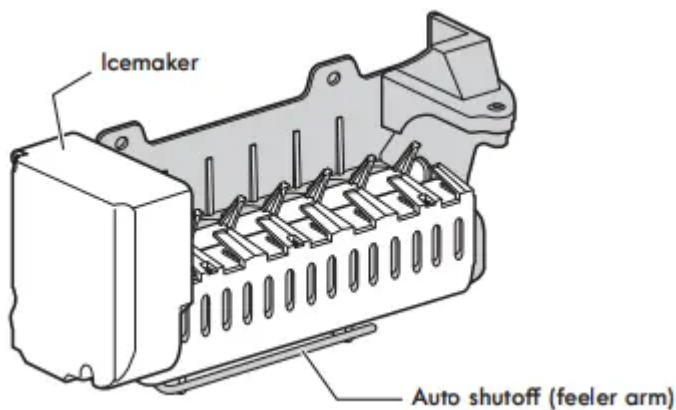
### To deactivate:

With either refrigerator door opened, press and hold the Refrigerator Temp and Ice Maker buttons at the same time for five seconds. The control panel will beep and the temperature settings will display to confirm that Demo Mode is deactivated. Use the same procedure to activate the Demo Mode.

## AUTOMATIC ICEMAKER

Ice is made in the automatic icemaker and sent to the dispenser. The icemaker will produce 70-182 cubes in a 24-hour period, depending on freezer compartment temperature, room temperature, number of door openings and other operating conditions.

- It takes about 12 to 24 hours for a newly installed refrigerator to begin making ice. Wait 72 hours for full ice production to occur.
- Ice making stops when the in-door ice bin is full. When full, the in-door ice bin holds approximately 6 to 8 (12-16 oz or 340-455 cc) glasses of ice.
- Foreign substances or frost on the auto shutoff (feeler arm) can interrupt ice production. Make sure the feeler arm is clean at all times for proper operation.
- To increase ice production, use the Ultra Ice function. This function increases both ice making and freezing capabilities.



### CAUTION

- The first ice and water dispensed may include particles or odor from the water supply line or the water tank.
- Throw away the first few batches of ice. This is also necessary if the refrigerator has not been used for a long time.
- Never store beverage cans or other items in the ice bin for the purpose of rapid cooling. Doing so may damage the icemaker or the containers may burst.
- If discolored ice is dispensed, check the water filter and water supply. If the problem continues, contact a Sears or other qualified service center. Do not use the ice or water until the problem is corrected.
- Keep children away from the dispenser. Children may play with or damage the controls.
- The ice passage may become blocked with frost if only crushed ice is used. Remove the frost that accumulates by removing the ice bin and clearing the passage with a rubber spatula. Dispensing cubed ice can also help prevent frost buildup.

- Never use thin crystal glass or crockery to collect ice. Such containers may chip or break resulting in glass fragments in the ice.
- Dispense ice into a glass before filling it with water or other beverages. Splashing may occur if ice is dispensed into a glass that already contains liquid.
- Never use a glass that is exceptionally narrow or deep. Ice may jam in the ice passage and refrigerator performance may be affected.
- Keep the glass at a proper distance from the ice outlet. A glass held too close to the outlet may prevent ice from dispensing.
- To avoid personal injury, keep hands out of the ice door and passage.
- Never remove the dispenser cover.
- If ice or water dispenses unexpectedly, turn off the water supply and contact Sears Home Service in the U.S.A. at 1-844-553-6667, and in Canada at 1-800- 469-4663.

## **WHEN TO SET ICEMAKER TO OFF**

When the water supply will be shut off for several hours.

When the ice bin is removed for more than one or two minutes.

When the refrigerator will not be used for several days.

**NOTE:** The ice bin should be emptied when the icemaker on/off button is turned to the OFF mode.

## **NORMAL SOUNDS YOU MAY HEAR**

If the icemaker ON/OFF button is set to ON, the valve will buzz even if the icemaker has not yet been hooked up to water. To stop the buzzing, switch the button to OFF.

**NOTE:** Keeping the icemaker ON/OFF button set to ON before the water is connected can damage the icemaker.

You will hear the sound of cubes dropping into the bin and water running in the pipes as the icemaker refills.

## **PREPARING FOR VACATION**

Set the icemaker ON/OFF button to OFF and shut off the water supply to the refrigerator.

**NOTE:** The ice bin should be emptied any time the icemaker on/off button is turned OFF.

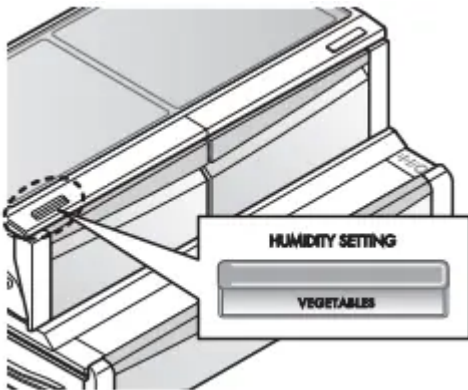
If the ambient temperature will drop below freezing, have a qualified technician drain the water supply system to prevent serious property damage due to flooding caused by ruptured water lines or connections.

## HUMIDITY CONTROLLED CRISPER

The crispers provide fresher tasting fruit and vegetables by letting you easily control humidity inside the drawer.

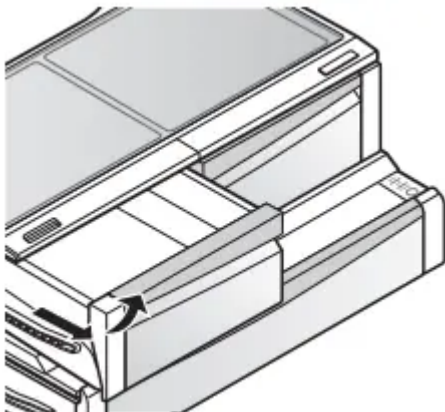
You can control the amount of humidity in the moisturesealed crispers by adjusting the control to any setting between VEGETABLES and FRUIT.

- VEGETABLES keeps moist air in the crisper for best storage of fresh, leafy vegetables.
- FRUIT lets moist air out of the crisper for best storage of fruit.



## REMOVING THE HUMIDITY CONTROLLED CRISPER

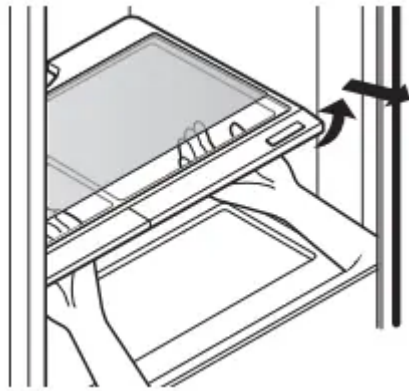
1. To remove, pull the drawer out to full extension.
2. Lift the front of the crisper up, then pull it straight out.



3. To install, slightly tilt up the front, insert the drawer into the frame and push it back into place.

### To remove the glass

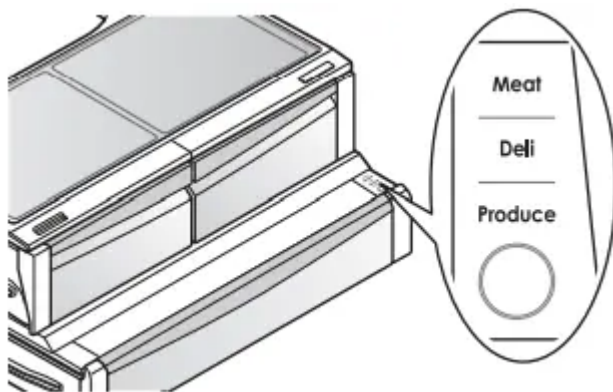
1. Lift up the glass under the crisper cover.
2. Pull the glass up and out. NOTE: Pantry drawer not shown for clarity



## TEMPERATURE CONTROLLED PANTRY DRAWER

The Temperature Controlled Pantry Drawer provides storage space with a variable temperature control that can keep the compartment at a slightly different temperature than the refrigerator section. This drawer can be used for large party trays, deli items and beverages. (This drawer should not be used for leafy vegetable produce that requires high humidity.)

Press the button to choose between Meat (Coldest), Deli (Colder) and Produce (Cold).



**CAUTION:** Do not store glass bottles in the pantry. If they are frozen, they can break and cause personal injury.

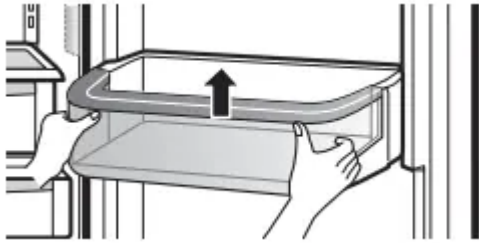
## DOOR BIN

The door bins are removable for easy cleaning and adjustment.

1. To remove the bin, simply lift the bin up and pull straight out.
2. To replace the bin, slide it in above the desired support and push down until it snaps into place.

**NOTE:** Some bins may vary in appearance and will only fit in one location.

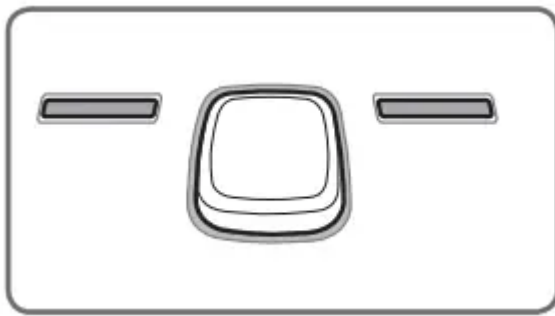
**CAUTION:** Do not overfill or pack items too tightly into door bins. Doing so may cause damage to the bin or personal injury if items are removed with excessive force.



## REPLACING THE AIR FILTER

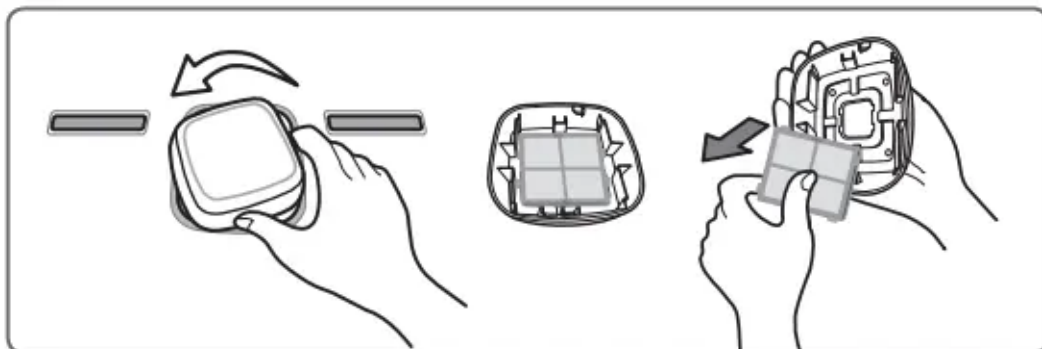
It is recommended that you replace the air filter:

- Approximately every six months.
- When the CHANGE AIR FILTER light turns on.



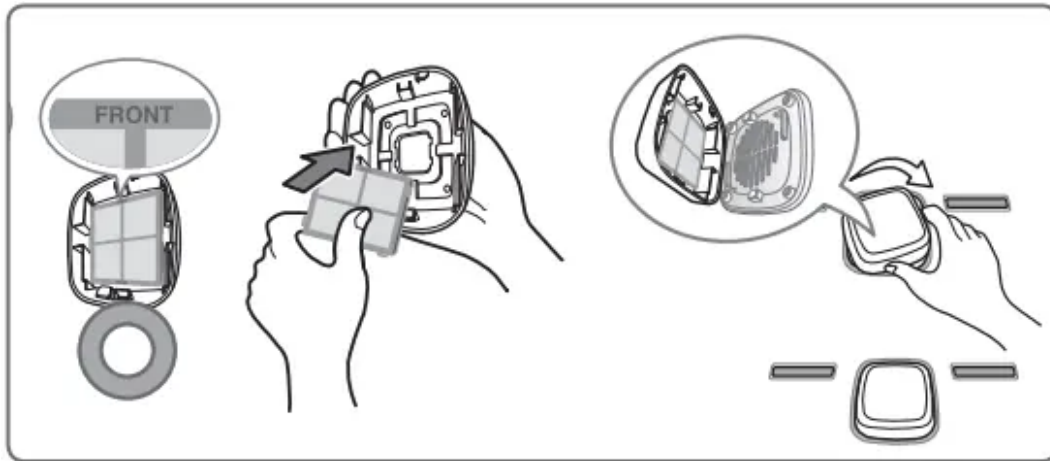
### 1. Remove the Old Filter

Place the new filter inside of the cover with the side that says “Front” facing outward. Turn the filter cover to the right to attach it to the refrigerator wall.



### 2. Install a New Air Filter.

Turn the filter cover to the left to detach it from the refrigerator wall. The filter is located on the inside of the filter cover. Remove the filter from the cover and replace it with a new filter.



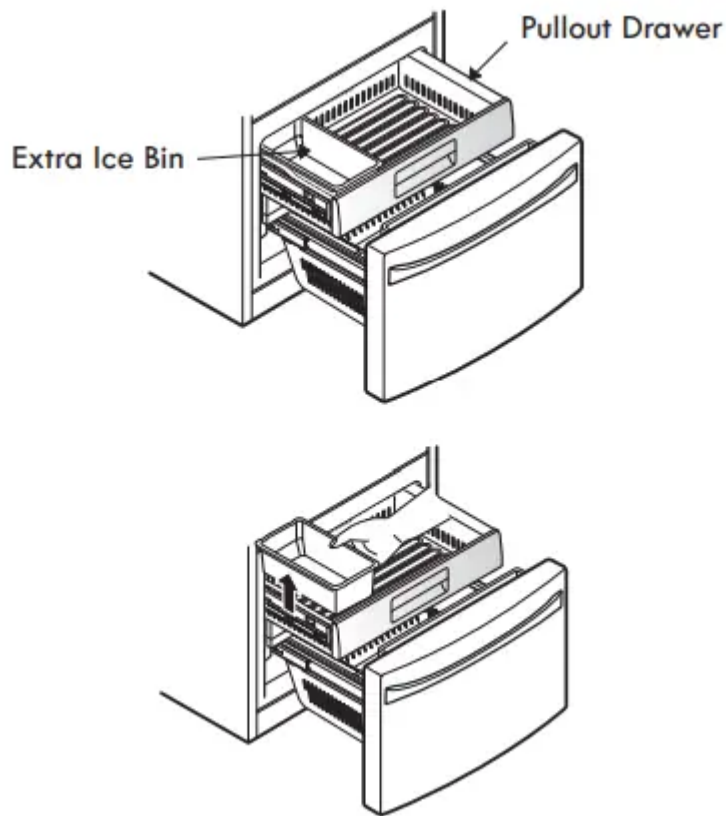
After changing the filter, push and hold the Air Filter button for three seconds to reset the filter sensor.

**NOTE:** To purchase a replacement air filter, visit your local Sears store, or in the U.S.A. call 1-844-553-6667, and in Canada 1-800-469-4663.

## **FREEZER SECTION**

### **EXTRA ICE BIN**

1. Pull the Freezer Drawer and the top Pullout Drawer out as far as possible to remove the Extra Ice Bin.
2. Gently lift and pull out the ice bin.
3. To replace, pull both drawers out as far as possible, and set the bin in its correct position in the Pullout Drawer. Close the Pullout Drawer and then the Freezer Drawer.



**CAUTION:** Pinch hazard! Keep hands and feet clear of the bottom of the freezer drawer when opening and closing.

## CARE AND CLEANING

Both the refrigerator and freezer sections defrost automatically; however, clean both sections about once a month to prevent odors. Wipe up spills immediately.

### GENERAL CLEANING TIPS

- Unplug refrigerator or disconnect power.
- Remove all removable parts, such as shelves, crispers, etc. Refer to sections in Using Your Refrigerator for removal instructions.
- Use a clean sponge or soft cloth and a mild detergent in warm water. Do not use abrasive or harsh cleaners.
- Hand wash, rinse and dry all surfaces thoroughly.
- Plug in refrigerator or reconnect power.

## EXTERIOR

Waxing external painted metal surfaces helps provide rust protection. Do not wax plastic parts. Wax painted metal surfaces at least twice a year using appliance wax (or auto paste wax). Apply wax with a clean, soft cloth.

For products with a stainless steel exterior, use a clean sponge or soft cloth and a mild detergent in warm water. Do not use abrasive or harsh cleaners. Dry thoroughly with a soft cloth.

## INSIDE WALLS (allow freezer to warm up so the cloth will not stick)

To help remove odors, you can wash the inside of the refrigerator with a mixture of baking soda and warm water. Mix 2 tablespoons of baking soda to 1 quart of water (26 g soda to 1 liter water.) Be sure the baking soda is completely dissolved so it does not scratch the surfaces of the refrigerator.

**CAUTION:** While cleaning the inside, do not spray water.

## DOOR LINERS AND GASKETS

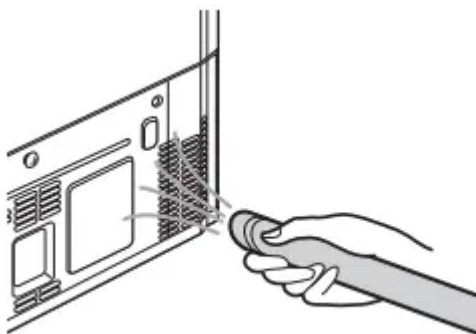
Use a clean sponge or soft cloth and a mild detergent in warm water. Do not use cleaning waxes, concentrated detergents, bleaches, or cleaners containing petroleum on plastic refrigerator parts.

## PLASTIC PARTS (Covers and Panels)

Use a clean sponge or soft cloth and a mild detergent in warm water. Do not use window sprays, abrasive cleansers, or flammable fluids. These can scratch or damage the material.

## CONDENSER COILS

Use a vacuum cleaner with an attachment to clean the condenser cover and vents. Do not remove the panel covering the condenser coil area.



## LIGHT BULB REPLACEMENT

**NOTE:** The refrigerator and freezer compartment lights have LED interior lighting, and service should be performed by a qualified technician.

## **POWER INTERRUPTIONS**

1. If the power will be out for 24 hours or less, keep all refrigerator doors closed to help foods stay cold and frozen.
2. If the power will be out for more than 24 hours, remove all frozen food and store it in a frozen food locker.

## **WHEN YOU GO ON VACATION**

If you choose to leave the refrigerator on while you are away, follow these steps to prepare your refrigerator before you leave.

1. Use up any perishables and freeze other items.
2. Turn off the icemaker and empty the ice bin.

If you choose to turn the refrigerator off before you leave, follow these steps.

1. Remove all food from the refrigerator.
2. Depending on your model, set the thermostat control (refrigerator control) to OFF. See the Setting the Controls section.
3. Clean the refrigerator, wipe it and dry well.
4. Tape rubber or wood blocks to the tops of both doors to prop them open far enough for air to get in. This stops odor and mold from building up.

## **WHEN YOU MOVE**

When you are moving your refrigerator to a new home, follow these steps to prepare it for the move.

1. Remove all food from the refrigerator and pack all frozen food in dry ice.
2. Unplug the refrigerator.
3. Clean, wipe and dry thoroughly.
4. Take out all removable parts, wrap them well and tape them together so they do not shift and rattle during the move. Refer to the Using your Refrigerator section for removable instructions.
5. Depending on the model, raise the front of the refrigerator so it rolls easier OR screw in the leveling legs all the way so they do not scrape the floor. See the Door Closing section.
6. Tape the doors shut and tape the power cord to the refrigerator cabinet.

When you get to your new home, put everything back and refer to the Refrigerator Installation section for preparation instructions.

## TROUBLESHOOTING GUIDE

Before conducting troubleshooting, make sure that the following basic requirements are met:

Service Flow	0.5 gpm (1.9 lpm)
Water Supply	Potable Water
Water Pressure	20-120 psi (138 - 827 kPa)
Operating Ambient Temperature Limits	55°F - 110°F
Electrical Ratings	115 Volts, 60 Hz, AC only, and fused at 15 or 20 amperes.



## COOLING

Problem	Possible Causes	Solutions
Refrigerator and Freezer section are not cooling.	The refrigerator control is set to OFF (some models).	Turn the control ON. Refer to the Set section for proper temperature settings.
	Refrigerator is set to demo mode.	Demo Mode allows the lights and controls to be on normally while disabling cooling to save energy on the showroom floor. Refer to the Set section for instructions on how to disable Demo Mode.
	Refrigerator is in the defrost cycle.	During the defrost cycle, the temperature in the refrigerator compartment may raise slightly. Wait until the defrost cycle has completed to confirm the proper temperature has been reached.
	Refrigerator was recently installed.	It may take up to 24 hours for each compartment to reach the desired temperature.
	Refrigerator was recently relocated.	If the refrigerator was stored for a long time or moved on its side, it is necessary for the refrigerator to stand upright for 24 hours before cooling.
Cooling System runs too much.	Refrigerator is replacing an older model.	Modern refrigerators require more or less energy due to more efficient technology.
	Refrigerator was recently plugged in or power restored.	The refrigerator will take up to 24 hours to reach the desired temperature completely.
	Door opened often or a large amount of food / hot food was added.	Adding food and opening the door will increase the temperature, requiring the compressor to run longer to bring the refrigerator back down. In order to minimize the amount of time the refrigerator runs, try to get everything you need out of the refrigerator at once, keep food organized so it is easy to find, and close the door as soon as the food is removed. (Refer to the Food Storage Guide.)
	Doors are not closed completely.	



		Firmly push the doors shut. If they way, see the Doors will not close co section in Parts & Features Troubles
	Refrigerator is installed in a hot location.	The compressor will run longer unde At normal room temperatures (70°F) compressor to run about 40% to 80% warmer conditions, expect it to run e refrigerator should not be operated a
	Condenser / back cover is clogged.	Use a vacuum cleaner with an attac condenser cover and vents. Do not covering the condenser coil area.



Problem	Possible Causes	Solutions
Refrigerator or Freezer section is too warm.	Refrigerator was recently installed.	It may take up to 24 hours for each compartment to reach the desired temperature.
	Air vents are blocked.	Rearrange items to allow air to flow through the refrigerator compartment. Refer to the Airflow Diagram in the Your Refrigerator section.
	Doors are opened often or for long periods of time.	When the doors are opened often or for long periods of time, warm, humid air enters the compartments. This raises the temperature and moisture level in the refrigerator compartment. To lessen the effect, reduce the frequency and duration of door openings.
	Unit is installed in a hot location.	The refrigerator should not be operated in a location above 110F.
	A large amount of food or hot food was added to either compartment.	Adding food warms the compartments and causes the cooling system to run. Allowing hot food to cool to room temperature before putting it in the refrigerator lessens this effect.
	Doors not closed correctly.	See the Doors will not close correctly section in Parts & Features Troubleshooting.
	Temperature control is not set correctly.	If the temperature is too warm, adjust the temperature control in 1-degree Fahrenheit increments at a time and wait for the temperature to stabilize. Refer to the Setting the Controls section for more information.
	Defrost cycle has recently completed.	During the defrost cycle, the temperature in the refrigerator compartment may raise slightly and frost may form on the back wall. Wait 30 minutes after the defrost cycle has completed for the proper temperature has been restored. The defrost cycle has completed.



Interior moisture buildup.	Doors are opened often or for long periods of time.	When the doors are opened often or for long periods of time, warm, humid air enters the compartment. This raises the temperature and moisture level in the compartment. To lessen the effect, reduce the frequency and duration of door openings.
	Doors not closed correctly.	See the Doors will not close correctly Troubleshooting section.
	Weather is humid.	Humid weather allows additional moisture to enter the compartment when the doors are opened. This can lead to condensation or frost. Maintaining a low humidity in the home will help to control the amount of moisture that can enter the compartment.
	Defrost cycle recently completed.	During the defrost cycle, the temperature in the compartment may raise slightly and frost may form on the back wall. Wait 30 minutes after the proper temperature has been reached before the defrost cycle has completed.
	Food is not packaged correctly.	Food stored uncovered or unwrapped in the compartment can lead to moisture accumulation. Wipe all containers dry and use sealed packaging to prevent condensation.



## COOLING/ICE & WATER

Problem	Possible Causes	Solutions
Food is freezing in the refrigerator compartment.	Food with high water content was placed near an air vent.	Rearrange items with high water content away from vents.
	Refrigerator temperature control is set incorrectly.	If the temperature is too cold, adjust the control in 1-degree increments at a time and wait for the temperature to stabilize. Refer to the Setting the Control section for more information.
	Refrigerator is installed in a cold location.	When the refrigerator is operated in a room that is below 41°F (5°C), food can freeze in the refrigerator compartment. The refrigerator should be operated in a room with a temperature below 55°F (13°C).
Frost or ice crystals form on frozen food (outside of package).	Door is opened frequently or for long periods of time.	When the doors are opened often or for long periods of time, warm, humid air enters the refrigerator compartment, raises the temperature and moisture level, and causes condensation. Increased moisture will cause frost or ice crystals to form on the outside of the refrigerator compartment. To lessen the effect, reduce the frequency and duration of door openings.
	Door is not closing properly.	Refer to the Doors will not close correctly section in the Troubleshooting section for more information.
Refrigerator or Freezer section is too cold.	Incorrect temperature control settings.	If the temperature is too cold, adjust the control in 1-degree increments at a time and wait for the temperature to stabilize. Refer to the Setting the Control section for more information.
Frost or ice crystals on frozen food (inside of sealed package).	Condensation from food with a high water content has frozen inside of the food package.	This is normal for food items with a high water content.
	Food has been left in the freezer for a long period of time.	Do not store food items with high water content in the freezer for a long period of time.



Icemaker is not making enough ice.	Demand exceeds ice storage capacity.	The icemaker will produce approximately a 24 hour period.
	House water supply is not connected, valve is not turned on fully, or valve is clogged.	Connect the refrigerator to a cold water supply with adequate pressure and turn the water supply valve open.  If the problem persists, it may be necessary to call a plumber.
	Water filter has been exhausted.	It is recommended that you replace the water filter.  <ul style="list-style-type: none"> <li>• Approximately every six months.</li> <li>• When the water filter indicator turns on.</li> <li>• When the water dispenser output is slow.</li> <li>• When the ice cubes are smaller than normal.</li> </ul>
	Low house water supply pressure.	The water pressure must be between 40 and 80 psi for most models without a water filter and between 60 and 80 psi for models with a water filter.  If the problem persists, it may be necessary to call a plumber or install a booster pump to increase the water pressure.
	Reverse Osmosis filtration system is used.	Reverse osmosis filtration systems require a minimum water pressure below the minimum amount required for the icemaker to operate. (Refer to Water Pressure Requirements for icemaker issues. (Refer to Water Pressure Requirements for icemaker issues.)
	Tubing connecting refrigerator to house supply valve is kinked.	The tubing can kink when the refrigerator is moved during installation or cleaning resulting in restricted water flow. Straighten or repair the water supply tubing. Use caution to prevent future kinks.



## ICE & WATER

Problem	Possible Causes	Solutions
Icemaker is not making enough ice (continued).	Doors are opened often or for long periods of time.	If the doors of the unit are opened often, it will warm the refrigerator which will prevent it from maintaining the set temperature. Lowering the set temperature can help, as well as not opening the doors as frequently.
	Doors are not closed completely.	If the doors are not properly closed, the icemaker will be affected. See the Doors will not close properly section in Parts & Features Troubleshooting for more information.
	The temperature setting for the freezer is too warm.	The recommended temperature for the freezer compartment for normal ice production is 0°F. If the freezer temperature is warmer, ice production will be affected.
Dispensing water slowly.	Water filter has been exhausted.	It is recommended that you replace the water filter: <ul style="list-style-type: none"> <li>• Approximately every six months.</li> <li>• When the water filter indicator turns on.</li> <li>• When the water dispenser output is slow.</li> <li>• When the ice cubes are smaller than normal.</li> </ul>
	Reverse osmosis filtration system is used.	Reverse osmosis filtration systems operate at a water pressure below the minimum amount required for the icemaker to produce ice. If the problem persists, it may be necessary to call a plumber or install a booster pump to increase the water pressure.



	Low house water supply pressure.	<p>The water pressure must be between 40 and 120 psi for all models without a water filter and between 30 and 120 psi for all models with a water filter.</p> <p>If the problem persists, it may be necessary to call a plumber or install a booster pump to increase the water pressure to a normal low pressure.</p>
Not dispensing ice.	Doors are not closed completely.	Ice will not dispense if any of the refrigerator doors are left open.
	Infrequent use of the dispenser.	Infrequent use of the ice dispenser can cause the ice to stick together over time, which will prevent the dispenser from properly dispensing. Check the ice bin for clumping/sticking together. If they are clumped, break up the ice cubes to allow for proper operation.
	The delivery chute is clogged with frost or ice fragments.	Eliminate the frost or ice fragments from the ice bin and clearing the chute with a plastic spatula. Dispensing cubed ice can also help prevent ice fragment buildup.
	The dispenser display is locked.	Press and hold the Lock button for three seconds to unlock the control panel and dispense ice.
	Ice bin is empty.	<p>It may take up to 24 hours for each cycle to reach the desired temperature and for the dispenser to start making ice. Make sure that the shut-off valve is not obstructed.</p> <p>Once the ice supply in the bin has been exhausted, it may take up to 90 minutes for ice to be available, and approximately 2 hours to completely refill the bin.</p>



Problem	Possible Causes	Solutions
Icemaker is not making ice.	Refrigerator was recently installed or icemaker recently connected.	It may take up to 24 hours for each of the compartments to reach the desired temperature and for the icemaker to begin making ice.
	Icemaker not turned on.	Locate the icemaker ON/OFF button and turn it ON.
	The refrigerator is not connected to a water supply or the supply shutoff valve is not turned on.	Connect refrigerator to the water supply and ensure the water shutoff valve is fully open.
	Icemaker shutoff (feeler arm) obstructed.	If your icemaker is equipped with an icemaker shutoff arm, make sure that the arm moves freely.
	Reverse osmosis water filtration system is connected to your cold water supply.	Reverse osmosis filtration systems operate at a lower water pressure below the minimum amount required for the icemaker to function. This can cause icemaker issues. (Refer to the Water Filtration section for more information.)
Not dispensing water.	New installation or water line recently connected.	Dispense 2.5 gallons of water (flush for 2-3 minutes) to remove trapped air and prime the system. Do not dispense the entire amount at once. Dispense continuously. Depress and release the Water button in 3-4 cycles of 30 seconds ON and 60 seconds OFF.
	The dispenser panel is locked.	Press and hold the Lock button for 3 seconds to unlock the control panel and dispense water.
	The dispenser is not set for water dispensing.	The dispenser can be set for ice or water. Press the Water button on the control panel to set the dispenser for water. Press the Water button on the control panel to dispense water.
	Refrigerator or freezer doors are not closed properly.	Water will not dispense if any of the doors are open.



<p>Water filter has been recently removed or replaced.</p>	<p>After the water filter is replaced, dispense water (flush for approximately 5 minutes) to remove trapped air and contaminants from the lines. To dispense the entire 2.5 gallon amount, depress and release the dispenser button for 30 seconds ON and 60 seconds OFF.</p>
<p>Tubing connecting refrigerator to house supply valve is kinked.</p>	<p>The tubing can kink when the refrigerator is installed or cleaned resulting in restricted water flow. Straighten or repair the water supply tubing to prevent future kinks.</p>
<p>The house water supply is not connected, the valve is not turned on fully, or the valve is clogged.</p>	<p>Connect refrigerator to the water supply line and turn the water shutoff valve fully open. If the problem persists, it may be necessary to call a plumber.</p>



Problem	Possible Causes	Solutions
Ice has bad taste or odor.	Water supply contains minerals such as sulfur.	A water filter may need to be installed to solve taste and odor problems.  <b>NOTE:</b> In some cases, a filter may not be able to remove all minerals / odors from the water supplies.
	Icemaker was recently installed.	Discard the first few batches of ice to get rid of the bad tasting ice.
	Ice has been stored for too long.	Ice that has been stored for too long can become cloudy, and may develop a stale taste. Discard the ice and make a new supply.
	The food has not been stored properly in either compartment.	Rewrap the food. Odors may migrate from food that is not wrapped properly.
	The interior of the refrigerator needs to be cleaned.	See the Care and Cleaning section for instructions.
	The ice storage bin needs to be cleaned.	Empty and wash the bin (discard old ice). Make sure that the bin is completely dry before using.
Dispensing warm water.	Refrigerator was recently installed.	Allow 24 hours after installation for the refrigerator to cool completely.
	The water dispenser has been used recently and the storage tank was exhausted.	Depending on your specific model, the amount of water capacity will range from approximately 1 to 2 gallons.
	Dispenser has not been used for several hours.	If the dispenser has not been used for several hours, the first glass dispensed may be warm. Allow 10-15 minutes for the water to cool to 68-72°F (20-22°C).



	Refrigerator is connected to the hot water supply.	<p>Make sure that the refrigerator is connected to the cold water pipe.</p> <p><b>WARNING:</b> Connecting the refrigerator to the hot water supply may damage the icemaker.</p>
Water has bad taste or odor.	Water supply contains minerals such as sulfur.	A water filter may need to be installed to solve taste and odor problems.
	Water filter has been exhausted.	<p>It is recommended that you replace the water filter when:</p> <ul style="list-style-type: none"> <li>• Approximately every 6 months.</li> <li>• When the water filter indicator turns red.</li> <li>• When the water dispenser output is slow.</li> <li>• When the ice cubes are smaller than normal.</li> </ul>
	Refrigerator was recently installed.	Dispense 2.5 gallons of water (flush for 5-10 minutes) to remove trapped air and restore normal flow to the system. Do not dispense the entire amount of water continuously. Depress and release the dispenser button in cycles of 30 seconds ON and 60 seconds OFF.
Icemaker is making too much ice.	Icemaker shutoff (feeler arm) is obstructed.	Empty the ice bin. If your icemaker is equipped with an ice shutoff arm, make sure that the arm is not obstructed. Reinstall the ice bin and wait 24 hours before resuming normal operation.



# NOISE



<b>Problem</b>	<b>Possible Causes</b>	<b>Solutions</b>
Clicking	The defrost control will click when the automatic defrost cycle begins and ends. The thermostat control (or refrigerator control on some models) will also click when cycling on and off.	Normal Operation
Rattling	Rattling noises may come from the flow of refrigerant, the water line on the back of the unit, or items stored on top of or around the refrigerator.	Normal Operation
	Refrigerator is not resting solidly on the floor.	Floor is weak or uneven or leveling legs are not adjusted. See the Door Alignment section.
	Refrigerator with linear compressor was jarred while running.	Normal Operation
Whooshing	Evaporator fan motor is circulating air through the refrigerator and freezer compartments.	Normal Operation
	Air is being forced over the condenser by the condenser fan.	Normal Operation
Gurgling	Refrigerant flowing through the cooling system.	Normal Operation
Popping	Contraction and expansion of the inside walls due to changes in temperature.	Normal Operation
Sizzling	Water dripping on the defrost heater during a defrost cycle.	Normal Operation



Vibrating	If the side or back of the refrigerator is touching a cabinet or wall, some of the normal vibrations may make an audible sound.	To eliminate the noise, make sure the back cannot vibrate against any wall.
Dripping	Water running into the drain pan during the defrost cycle.	Normal Operation
Pulsating or High-Pitched Sound	Your refrigerator is designed to run more efficiently to keep your food items at the desired temperature. The high efficiency compressor may cause your new refrigerator to run longer than your old one, but it is still more energy efficient than previous models. While the refrigerator is running, it is normal to hear a pulsating or high-pitched sound.	Normal Operation



## PARTS & FEATURES



Problem	Possible Causes	Solutions
Doors will not close correctly or pop open.	Food packages are blocking the door open.	Rearrange food containers to clear the shelves.
	Ice bin, crisper cover, pans, shelves, door bins, or baskets are out of position.	Push bins all the way in and put crisper shelves and baskets into their correct position. See the Using Your Refrigerator section for more information.
	The doors were removed during product installation and not properly replaced.	Remove and replace the doors according to the Removing and Replacing Refrigerator Doors section.
	Refrigerator is not leveled properly.	See Door Alignment in the Refrigerator section to level refrigerator.
Doors are difficult to open.	The gaskets are dirty or sticky.	Clean the gaskets and the surfaces with a thin coat of appliance polish or kitchen cleaner. Wipe the gaskets after cleaning.
	Door was recently closed.	When you open the door, warmer air enters the refrigerator. As the warm air cools, it creates a vacuum. If the door is hard to open, allow the air pressure to equalize, then open the door more easily.
Refrigerator wobbles or seems unstable.	Leveling legs are not adjusted properly.	Refer to the Leveling and Door Alignment section.
	Floor is not level.	It may be necessary to add shims under the leveling legs or rollers to complete installation.
Lights do not work.	LED interior lighting failure.	The refrigerator compartment lamp is not working. The refrigerator lighting, and service should be performed by a qualified technician. Refer to the Light Bulb Replacement section.



Refrigerator has an unusual odor.	The Air Filter may need to be set to the MAX setting or replaced.	Set the Air Filter to the MAX setting. If the odor does not go away within 24 hours, the filter must be replaced. See the Replacing the Air Filter replacement instructions.
The interior of the refrigerator is covered with dust or soot.	The refrigerator is located near a fire source, such as a fireplace, chimney or candle.	Make sure that the refrigerator is not located near a fire source, such as a fireplace, chimney or candle.

**Warning**

This content is compiled from multiple sources and is provided for reference purposes only. It may not be complete or fully applicable to all situations. If you are unable to resolve your issue, please contact the product manufacturer or an authorized service provider for official support.

