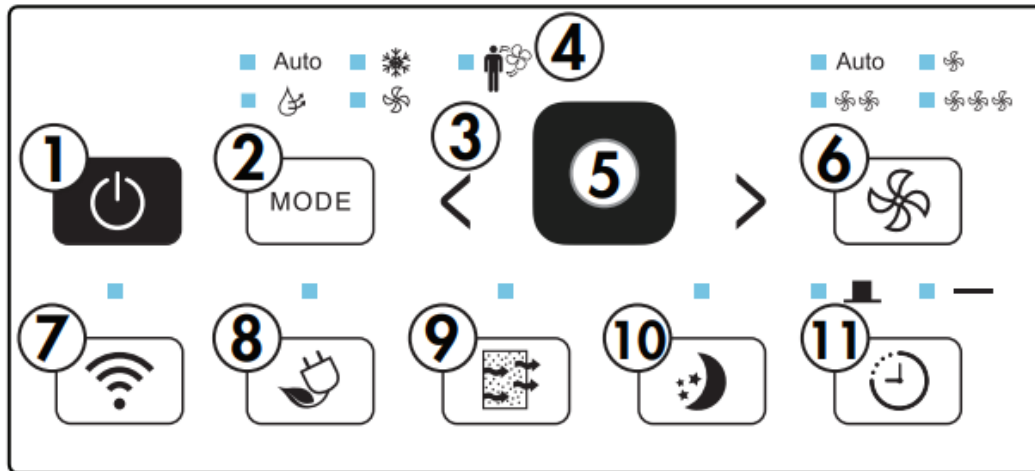


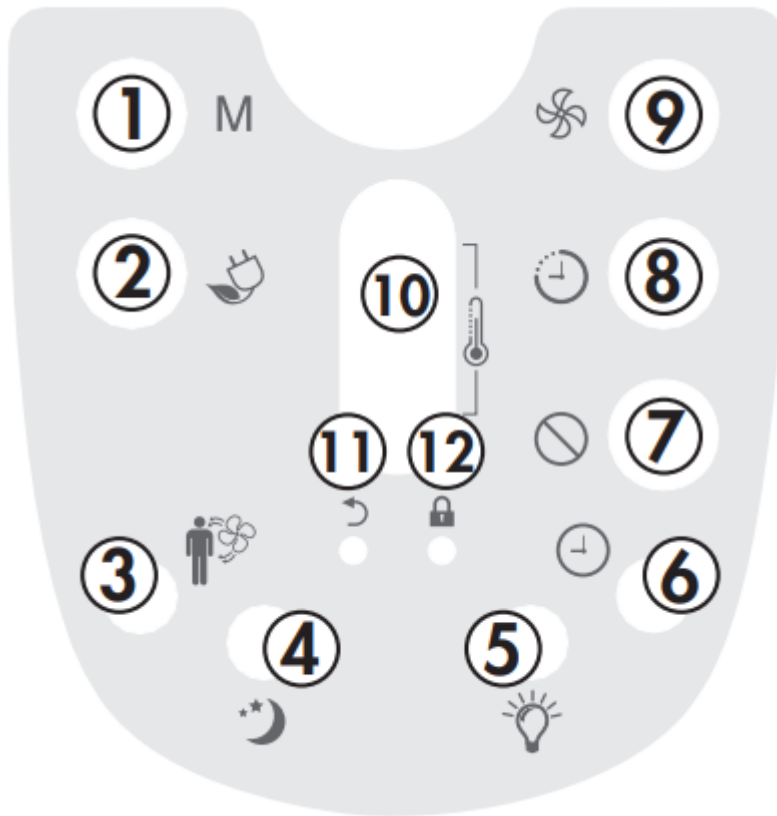
## OPERATING INSTRUCTIONS

### CONTROL PANEL



- 1. Power button:** Used to turn the appliance on or off.
- 2. Mode button:** Used to choose the operating mode.
- 3. Up and down arrows:** Used to adjust the set temperature and the timer function.
- 4. Follow me indicator light:** Illuminates when the follow me function is active. Follow me can only be set from the remote control.
- 5. Display panel:** Displays the set temperature, the ambient temperature and the timer settings. To change the temperature scale being displayed, press the up and down buttons at the same time.
- 6. Fan button:** Used to set the fan speed.
- 7. Wireless connect button:** Used to connect to a wireless network.
- 8. Energy saver button:** Used to set the energy saver function.
- 9. Filter button:** The indicator light will illuminate as a reminder to check the filter. Once the filter has been cleaned, use this button to resume operation.
- 10. Sleep button:** Used to set the sleep function.
- 11. Timer button:** Used to set the automatic timer.

## REMOTE CONTROL



1. **Mode button:** Used to choose the operating mode.
2. **Energy saver button:** Used to set the energy saver function.
3. **Follow me button:** Used to set the follow me function.
4. **Sleep button:** Used to set the sleep function.
5. **LED button:** Press to turn the LED back light on or off.
6. **Clock button:** Press and hold the button for 3 seconds in order to set the clock. Press the up and down arrows to adjust the time in 10 minute intervals

Note: The clock feature is only available on the remote, the appliance does not have a clock. The remote clock is a 24 hour clock only.

7. **Cancel button:** Cancels current timer settings.
8. **Timer button:** Used to set the automatic timer.
9. **Fan button:** Used to set the fan speed.
10. **Up and down arrows:** Used to adjust the set temperature and the timer function.
11. **Default button:** Press to restore the remote control default settings.
12. **Lock button:** Press this button to lock the remote control and prevent the settings from being inadvertently changed.

## FUNCTION INSTRUCTION

### • Operating Modes

There are four operating modes to choose from. Press the mode button repeatedly to choose the desired mode. The adjacent indicator light will illuminate to show which mode has been selected.

### • Cool Mode

Choose cool mode to set the cooling function. Use the up and down arrows to choose the desired temperature. When cool mode is selected, the fan speed can be adjusted by pressing the fan button.

### • Dry Mode

Choose dry mode to remove excess moisture from the air during periods of high humidity. All water pulled from the air will condense inside the appliance and drain out the back. The fan speed will be automatically set and cannot be modified in dry mode.

### • Fan Mode

Choose fan mode to run the internal fan without engaging the cooling function. Press the fan button repeatedly to choose the fan speed.

### • Auto Mode

Auto mode is a pre-set factory program that automatically defines the mode and fan speed based on the set temperature, the ambient temperature and the ambient humidity.

## TIMER FUNCTION

The timer function can be used to turn the appliance on or off after a set period of time.

### Automatic turn on timer

1. Press the timer button once and the timer light will illuminate.
2. Use the up and down arrows to select the desired amount of time before the appliance should turn on.
3. The time selected will appear on the display panel and will count down until the appliance turns on.

### Auto Off Function

1. Press the timer button twice and the timer light will illuminate.
2. Use the up and down arrows to select the desired amount of time before the appliance should turn off.
3. The time selected will appear on the display panel and will count down until the appliance turns off.

## **UP AND DOWN ARROWS**

The up and down arrows will modify the set temperature in 1° increments.

The up and down arrows will modify the set time of the timer function in 0.5 hour increments up to 10 hours and then in 1 hour increments up to 24 hours maximum.

## **SLEEP FUNCTION**

The sleep function can be used to conserve energy during sleeping hours.

When selected, the set temperature will increase by 1°C/2°F every half hour for one full hour. The appliance will hold the new set temperature for 6 hours before automatically returning to normal operation.

The sleep function can be canceled at any time by pressing the sleep button.

## **ENERGY SAVER FUNCTION**

The energy saver function will automatically cycle the fan on and off when the compressor is not in use to minimize how often the compressor needs to turn on. This function is available in cool, dry and auto modes. The fan will continue to run for 3 minutes after the compressor turns off.

The fan will then cycle on for 2 minutes in 10 minute intervals until the ambient temperature is above the set temperature, at which point the compressor will turn on and cooling will resume.

# **CARE & MAINTENANCE**

## **AIR FILTER**

The air filter should be cleaned approximately every 2 weeks. The air filter may require more frequent cleaning if there is significant dander or fur in the air.

Approximately every two weeks, the filter indicator light on the control panel will illuminate as a reminder to clean the filter. Follow the steps below to clean the filter and return the appliance to normal functioning.

1. The air filter is located behind the front intake grill. To remove the air filter, grasp the filter tab on the right side of the grill and slide it out to the right. If the front intake grill has two indentations, pull the grill forward to remove the air filter.
2. Use a vacuum cleaner with a soft brush attachment to remove any large debris or dust build up from the air filter.
3. Wash the filter in lukewarm, soapy water, below 40°C (104°F), or use a neutral cleaning agent.

4. Rinse the filter with clean water and dry thoroughly before reinstalling in the appliance.
5. Press the filter button on the control panel to resume normal functioning.

Note: Do not operate the appliance without the air filter installed.

## **ERROR CODES**

If the display panel shows any of the below error codes, unplug the appliance, let it stand for 5-10 minutes and then plug it back in. If the error persists, call for service.

**AS** - Room temperature sensor error

**HI** - Temperature sensor error

**LO** - Temperature sensor error

**“.”** - Evaporator temperature sensor error

## **CLEANING**

To avoid possible electric shock, ensure that the appliance is unplugged before performing any cleaning or maintenance.

The outside of the appliance can be wiped clean with a soft cloth or with a lukewarm, damp cloth if necessary

Do not use gasoline, benzene, thinner or any other chemicals to clean this appliance as these substances can cause damage to the finish and deformation of plastic parts.

Never pour water directly onto the appliance as this will cause deterioration of electrical components and wiring insulation.

## **END OF SEASON CARE**

Before removing the appliance from service for the year, operate the appliance on high fan mode for half a day to ensure the inside of the appliance is dry. This will help avoid the growth of mold or mildew inside the appliance. Ensure the filter is clean and dry. Store the appliance covered in a dry location.

Note: When installing or removing the appliance from the window, ensure that caution is taken to prevent it from falling backward. It is recommended that installation or removal is completed with assistance to prevent injury to persons or damage to property or the appliance.

## **DISPOSAL**

Check for local regulatory compliance regarding approved and safe disposal of this appliance.

## TROUBLESHOOTING

PROBLEM	POSSIBLE CAUSE
Appliance will not operate	<ul style="list-style-type: none"><li>• Plug is not fully inserted into the wall outlet</li><li>• Blown fuse or circuit breaker</li></ul>
Insufficient cooling	<ul style="list-style-type: none"><li>• Air filter is dirty</li><li>• Blocked air flow</li><li>• Appliance size is too small for application</li></ul>
Noise	<ul style="list-style-type: none"><li>• Inadequate support in window installation</li></ul>
Odors	<ul style="list-style-type: none"><li>• Formation of mold or mildew on internal wet surfaces</li><li>• Place an algaecide tablet in base pan; push the tablet through the grill on either side of the appliance</li></ul>
Water dripping inside	<ul style="list-style-type: none"><li>• Appliance is not properly angled to allow water to drain to the outside</li></ul>
Water dripping outside	<ul style="list-style-type: none"><li>• On very hot or humid days dripping water from the back of the appliance is normal</li></ul>
Frost build up	<ul style="list-style-type: none"><li>• When outdoor temperatures are below 18.3°C (65°F) frost may form when the appliance is in cooling mode</li><li>• Switch the appliance to fan only mode until the frost melts</li></ul>

### Warning

This content is compiled from multiple sources and is provided for reference purposes only. It may not be complete or fully applicable to all situations. If you are unable to resolve your issue, please contact the product manufacturer or an authorized service provider for official support.