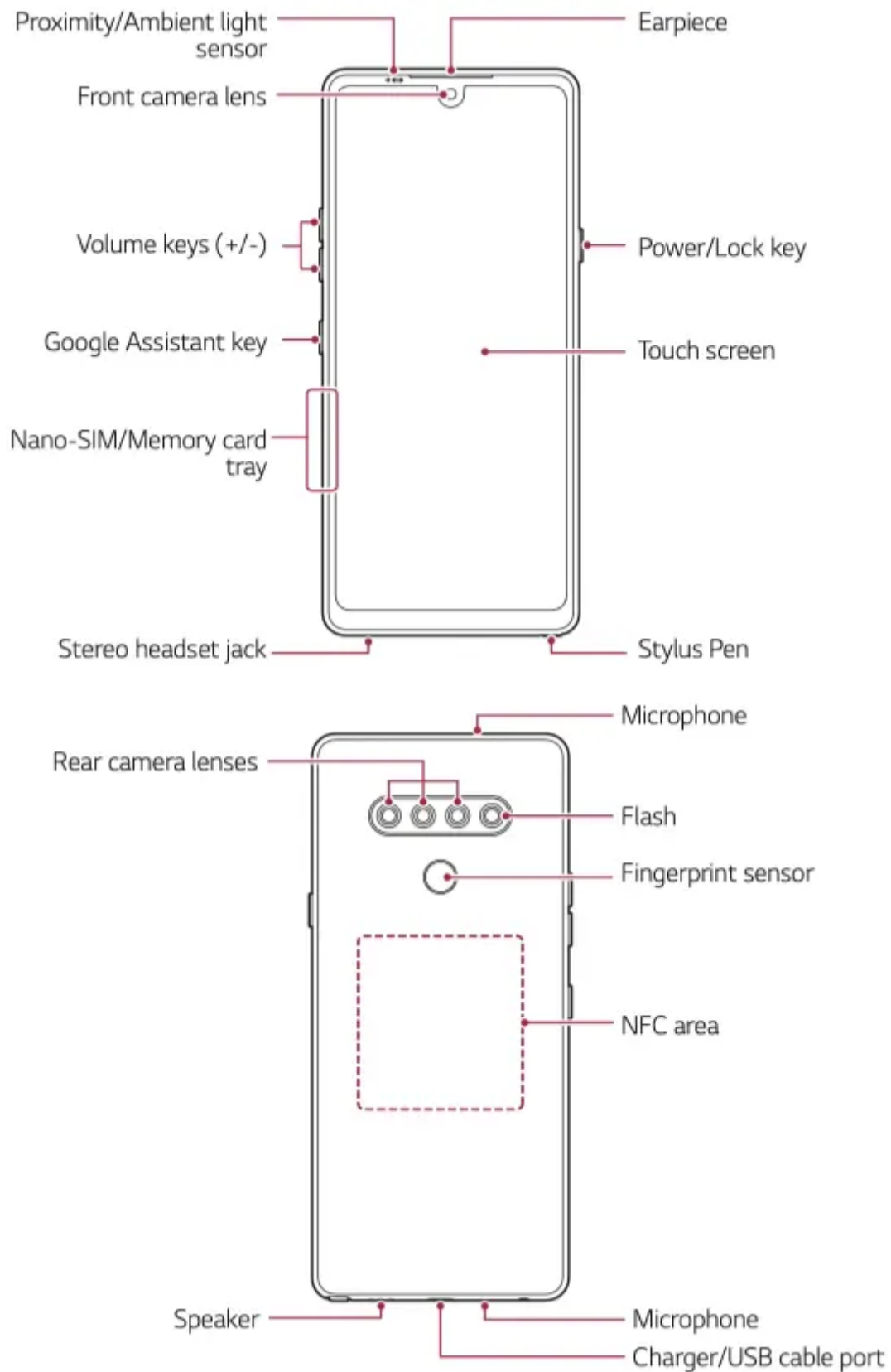


Owner 's Manual for Mobile



Basic Functions

Parts overview





Do NOT attempt to remove the back cover.

This device has a non-removable battery. Do not attempt to remove the back cover. Doing so may severely damage the battery and device, which could cause overheating, fire, and injury.



• Press and hold the volume down key and Power/Lock key at the same time for a second to take a screenshot.

- Proximity/Ambient light sensor

- Proximity sensor: During a call, the proximity sensor turns off the screen and disables touch functionality when the device is in close proximity to the human body. It turns the screen back on and enables touch functionality when the device is outside a specific range.

- Ambient light sensor: The ambient light sensor analyzes the ambient light intensity when the auto-brightness control mode is turned on.

- Volume keys

- Adjust the volume for ringtones, calls or notifications.

- While using the Camera, gently press a Volume key to take a photo.

To take continuous photos, press and hold the Volume key.

- Press the Volume Down key twice to launch the Camera app when the screen is locked or turned off. Press the Volume Up key twice to launch Screen-off memo.

- Power/Lock key

- Briefly press the key when you want to turn the screen on or off.

- Press and hold the key when you want to select a power control option.

- Google Assistant key

- Your device has Google Assistant built in. Find answers and get things done while on-the-go. To get started, just tap the Google Assistant key on the side of the phone.

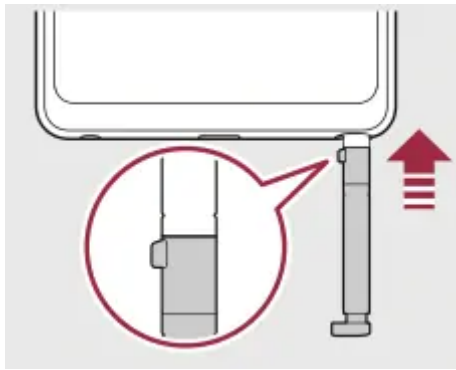
- Activate Google assistant. See Google Assistant for details.

- Stylus pen

- Operate the device with the stylus pen included, or your finger.

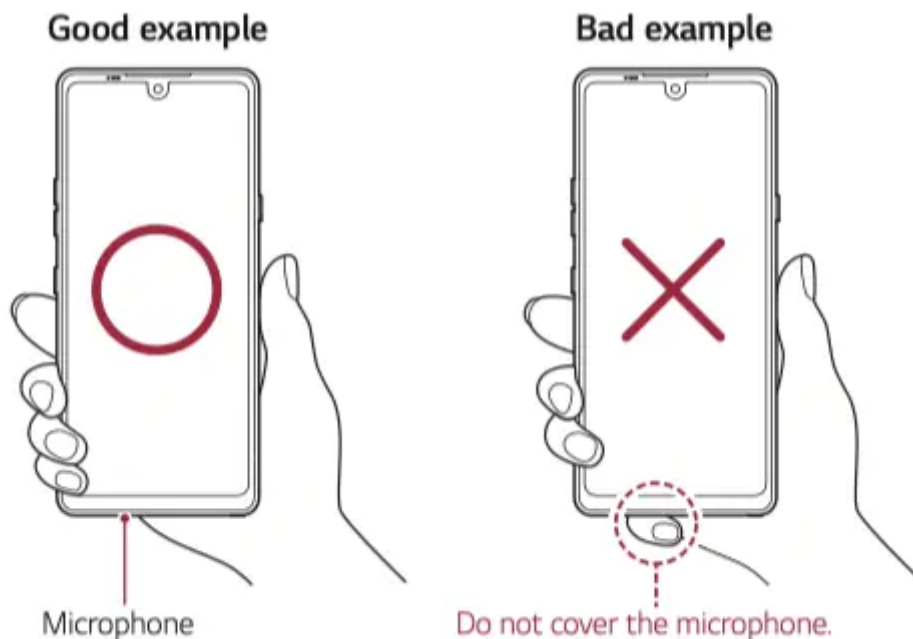


To insert the pen into the device, align the pen with the device as shown in the picture below and push it until it clicks.



- Some functions may be restricted for access, depending on the device specifications.
- Do not put heavy objects on the device or sit on it. Doing so may damage the touch screen.
- The rear of the device includes a built-in NFC antenna. Be cautious when handling the device to avoid damaging or covering the NFC antenna.
- Screen-protective film or accessories may interfere with the proximity sensor.
- If your device is wet or is being used in a humid place, the touch screen or buttons may not function properly.

Hold the device correctly as shown below. If you cover the microphone hole with a hand, finger, or protective case while using the device, you may sound unclear during a call.



Turning the power on or off

Turning the power on

When the power is turned off, press and hold the Power/Lock key.



• When the device is turned on for the first time, initial configuration takes place. The first booting time for the smart phone may be longer than usual.

Turning the power off

Press and hold the Power/Lock key, then select Power off.

Restarting the device

When the device is not working properly or does not respond, restart it by following the instructions below.

1. Press and hold the Power/Lock key and the Volume Down key at the same time until the power is turned off.
2. When the device restarts, release the key.

Power control options

Press and hold the Power/Lock key, then select an option.

- Power off: Turn the device off.
- Power off and restart: Restart the device.

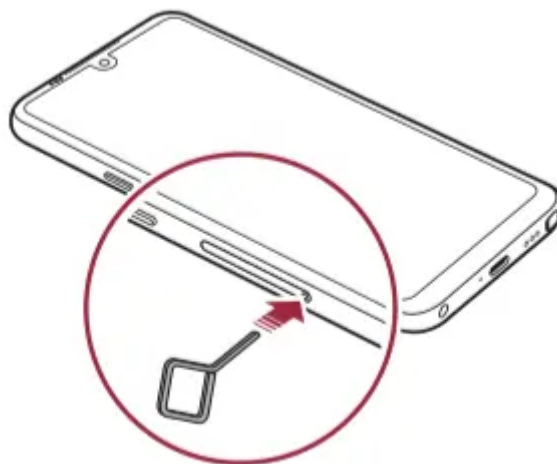
Installing the SIM card and memory card

Insert the SIM card provided by your mobile service provider to start using your device.

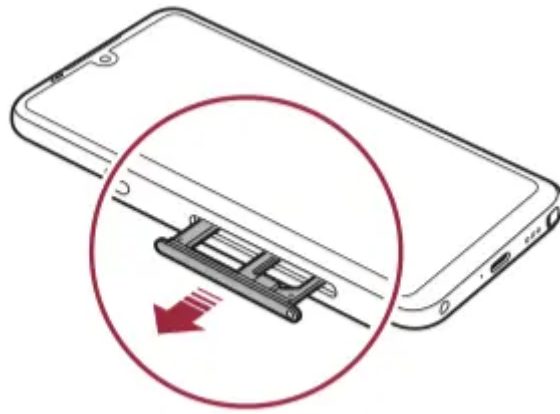


• Be careful with the ejection pin since it has a sharp edge.

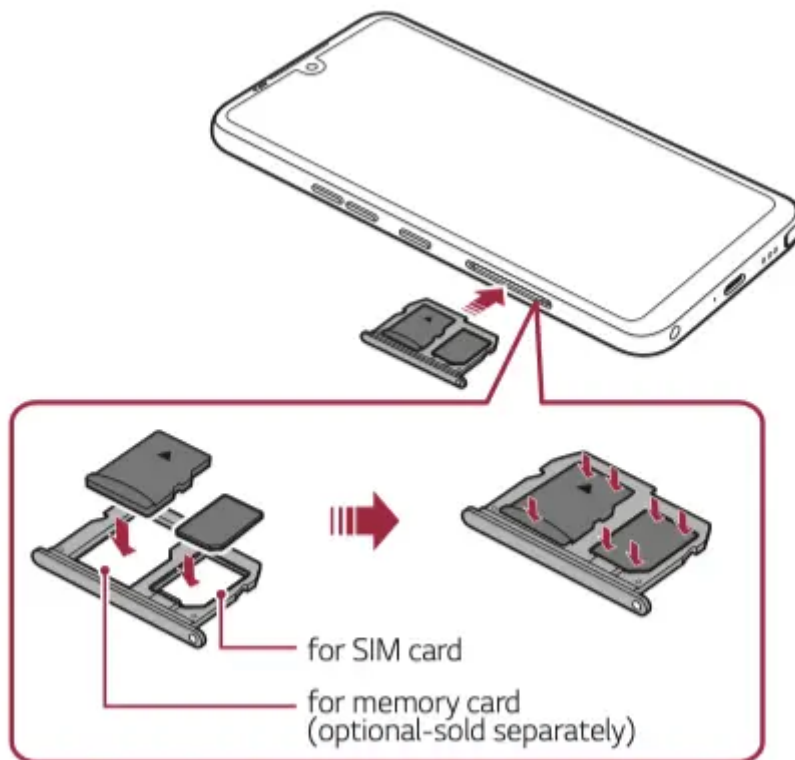
1. Insert the ejection pin into the hole on the card tray.



2. Pull out the card tray.

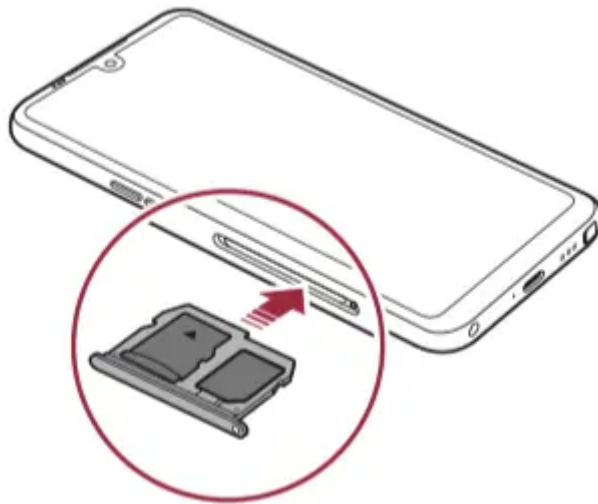


3. Put the SIM card (and a memory card; optional-sold separately) on the card tray with the gold-colored contacts facing downwards.



4. Insert the card tray back into the slot.






- This device supports only Nano SIM cards.
- For problem-free performance, it is recommended to use the device with the correct type of SIM card. Always use a factory-made SIM card supplied by the service provider.
- Do not lose your SIM card. LG is not responsible for damage and other issues caused by loss or transfer of a SIM card.
- Be careful not to damage the SIM card when you insert or remove it.
- When you insert the card tray back into the device, insert it horizontally in the direction of arrow as shown in the figure. Make sure that the card placed on the card tray does not move out of its position.
- Frequent writing and erasing of data may shorten the memory card lifespan.
- Some memory cards may not be fully compatible with the device. If you use an incompatible card, it may damage the device or the memory card, or corrupt the data stored in it.

Removing the memory card

Unmount the memory card before removing it for safety.

1. On the home screen, tap Settings > Storage > .
2. Insert the ejection pin into the hole in the card tray and then pull out the card tray from the device.
3. Remove the memory card from the card tray.
4. Insert the card tray back into the slot.



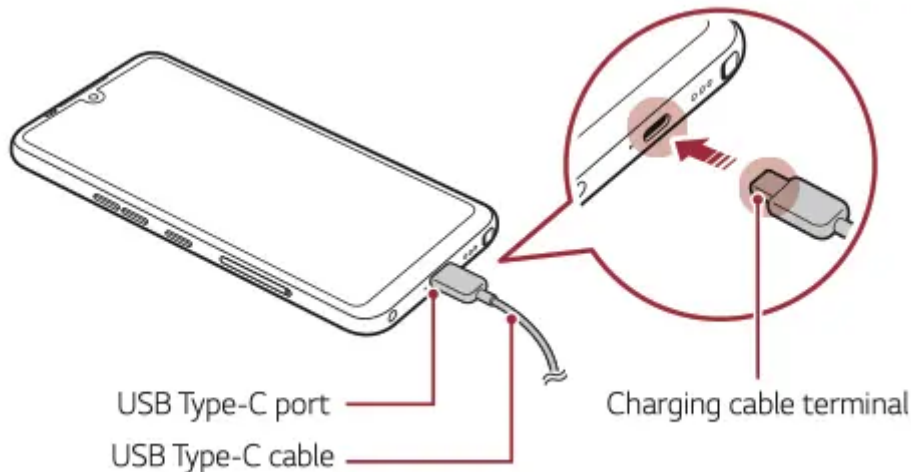
- Do not remove the memory card while the device is transferring or accessing information.

This may cause data to be lost or corrupted, or may damage the memory card or the device. LG is

not responsible for losses that result from the abuse or improper use of memory cards, including the loss of data.

Charging the battery

Before using the device, fully charge the battery. Connect one end of the charging cable to the charger, insert the other end of the cable into the cable port, and then plug the charger into a power socket.



- Do not charge while the device or charging cable is wet or contains moisture. This can cause fire, electric shock, injury or damage to device. If there is moisture, stop using the device immediately and remove the moisture completely.

- Do not use unapproved USB cables or chargers with your device. The LG limited warranty does not cover damage caused by the use of third party accessories.
- Using the device when it is charging may cause electric shock. To use the device, stop charging it.



- Remove the charger from the power socket after the device is fully charged. This prevents unnecessary power consumption.

- Another way to charge the battery is by connecting a USB cable between the device and a desktop or laptop computer. This may take a longer time than plugging the adapter to a wall outlet.
- Do not charge the battery by using a USB hub that is unable to maintain the rated voltage. Charging may fail or unintentionally stop.
- Since the battery is a consumable, the battery life may be shortened as time goes.

Using the battery efficiently

Battery lifespan may decrease if you keep many apps and functions running simultaneously and continuously.

Stop apps and functions from running in the background to increase battery life.

To minimize battery consumption, follow these tips:

- Turn off the Bluetooth ® or Wi-Fi network function when not using them.
- Set the screen timeout to as short a time as possible.
- Minimize the screen brightness.
- Set a screen lock when the device is not in use.
- Check the battery level while using any downloaded apps.

Touch screen

You can familiarize yourself with how to control your device by using touch screen gestures.

Tapping

Lightly tap with your fingertip to select or run an app or option.



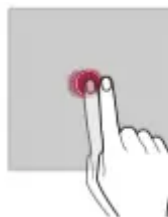
Touching and holding

Touch and hold for several seconds to display a menu with available options.



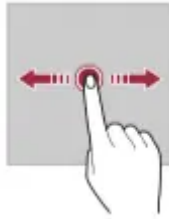
Double-tapping

Tap twice quickly to zoom in or out on a web page or map.



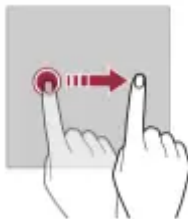
Dragging

Touch and hold an item, such as an app or widget, then move your finger to another location in a controlled motion. You can use this gesture to move an item.



Swiping

Touch the screen with your finger and move it quickly without pausing. You can use this gesture to scroll through a list, a web page, photos, screens, and more.



Pinching and spreading

Pinch two fingers to zoom out such as on a photo or map. To zoom in, spread your fingers apart.



• Do not expose the touch screen to excessive physical shock. You might damage the touch sensor.



• A touch screen failure may occur if you use the device near a magnetic, metallic or conductive material.

- If you use the device under bright lights, such as direct sunlight, the screen may not be visible, depending on your position. Use the device in a shady location or a location with an ambient light that is not too bright and bright enough to read books.
- Do not press the screen with excessive force.
- Gently tap with your fingertip on the desired option.

- The touch control may not work properly if you tap while wearing a glove or by using the tip of your fingernail.
- Touch control may not work properly if the screen is moist or wet.
- The touch screen may not function properly if a screen-protective film or accessory purchased from a third party store is attached to the device.
- Displaying a static image for extended periods of time may result in after-images or screen burn-in. Turn off the screen or avoid displaying the same image for a long time when you do not use the device.

Home screen

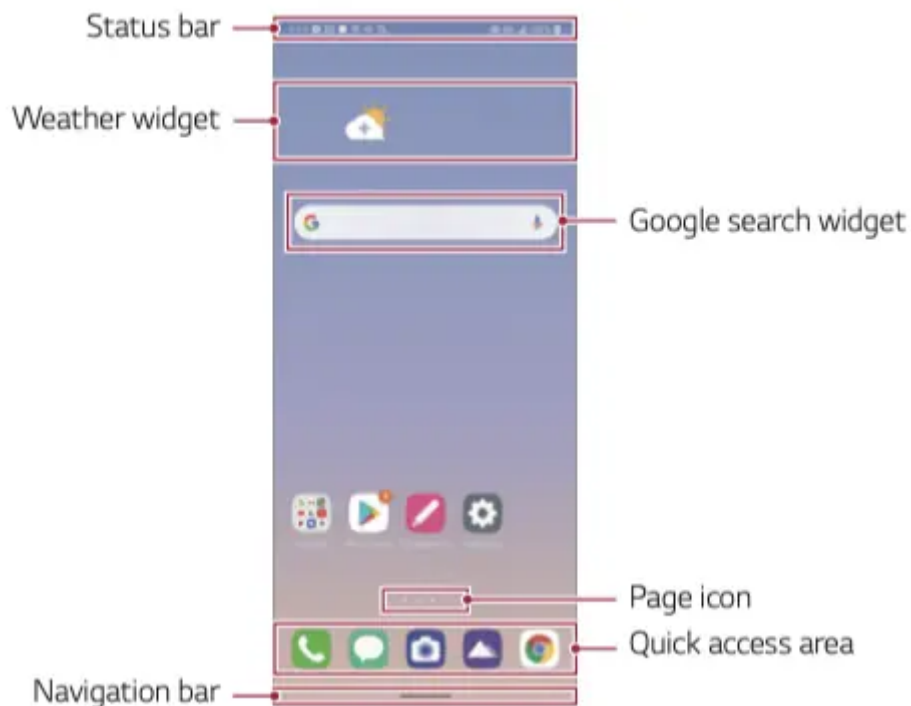
Home screen overview

The Home screen is the starting point for accessing various functions and apps on your device. Swipe up from the bottom edge of any screen to directly go to the Home screen.

You can manage all apps and widgets on the Home screen. Swipe the screen left or right to view all installed apps at a glance.

Home screen layout

You can view all apps and organize widgets and folders on the Home screen.



• The Home screen may differ depending on the manufacturer policy, user settings, software version or service provider.

- Status bar: View status icons, the time and the battery level.


- Weather widget: View the information of weather and time for a specific area.
- Google Search widget: Type or speak to open Google Search.
- Folder: You can create folders to classify the app based on desired criteria.
- Page icon: Display the total number of Home screen canvases. You can tap the desired page icon to go to the page. The icon reflecting the current canvas will be highlighted.
- Quick access area: Fix main apps at the bottom of the screen so that they can be accessed from any Home screen canvas.
- Navigation bar: You can do some gestures to go to the Home screen, previous screen, Overview screen, or quickly switch between apps.

Using Navigation bar

Here is the gestures guide to control the Navigation bar.






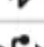









- To go to Home screen, swipe up from the bottom edge of the screen.
- To go back to the previous screen, swipe in from the left or right edge of the screen.
- To go to Overview screen, swipe up and hold from the bottom edge of the screen.
- To quickly switch between apps, swipe right at the bottom edge of the screen to go to previously used apps.



• Gestures is the default for the Navigation bar. To change it to Buttons only , tap Settings Display Navigation bar, then select Buttons only.

Status icons

When there is a notification for an unread message, calendar event or alarm, the status bar displays the corresponding notification icon. Check your device's status by viewing notification icons displayed on the status bar.

	No signal
	Data is being transmitted over the network
	Alarm is set
	Vibrate mode is on
	Bluetooth is on
	Connected to a computer via USB
	Battery level
	Airplane mode is on
	Missed calls
	Wi-Fi is connected
	Mute mode is on
	Checking the current location via GPS
	Hotspot is on
	No SIM card
	The NFC mode is on




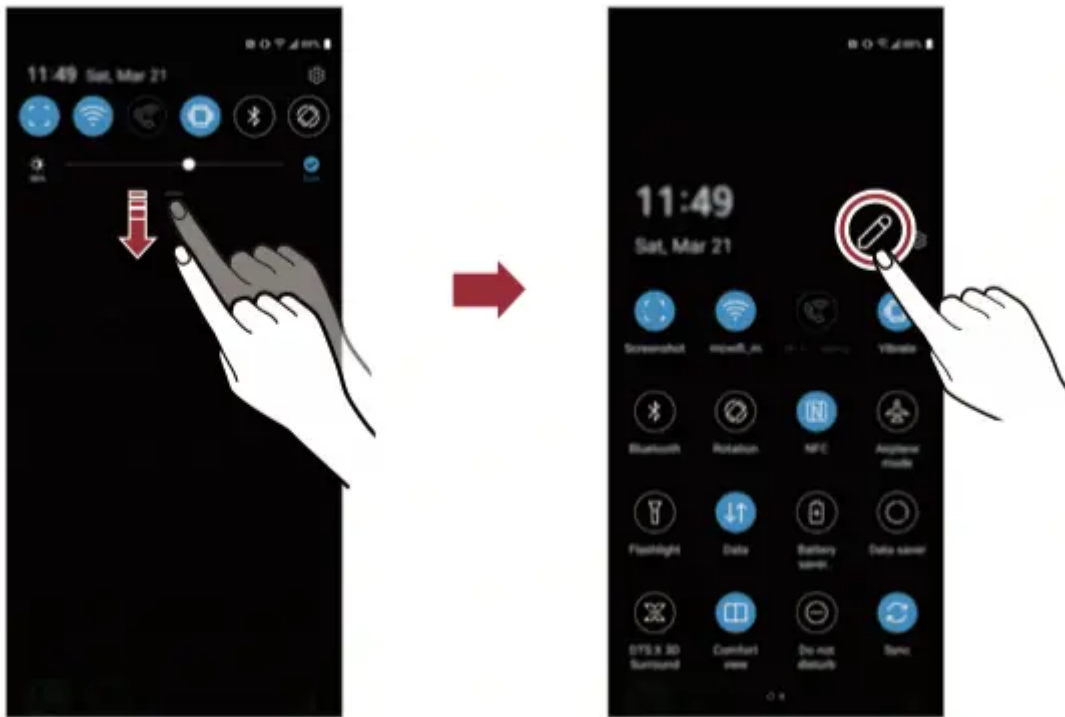
• Some of these icons may appear differently or may not appear at all, depending on the device's status. Refer to the icons according to the actual environment and area in which you are using the device and your service provider.

- Displayed icons may vary, depending on the area or service provider.

Notifications panel

You can open the notifications panel by dragging the status bar downward on the main screen.

- You can drag down the notice window or tap to open the list of quick setting icons.
- You can tap  to add, delete or arrange icons in the notice window.
- If you touch and hold the icon, the settings screen for the corresponding function appears.



• You can use the notifications panel even on the lock screen. Drag the notifications panel while the screen is locked to quickly access the desired features.

Switching the screen orientation


You can set the screen orientation to automatically switch according to the device's physical orientation.

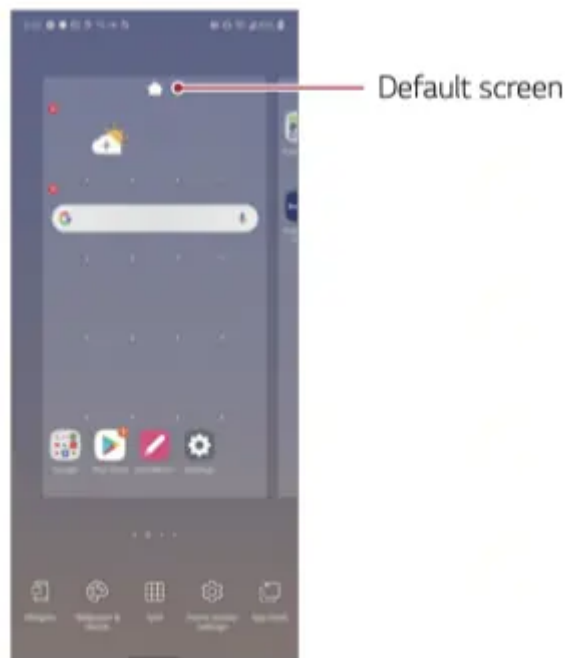
On the notification panel, tap Rotation from the quick access icon list. You can also tap Settings on the home screen, tap Display and activate Auto-rotate screen.



Editing the Home screen


On the Home screen, touch and hold on an empty space, then select the desired action from below.

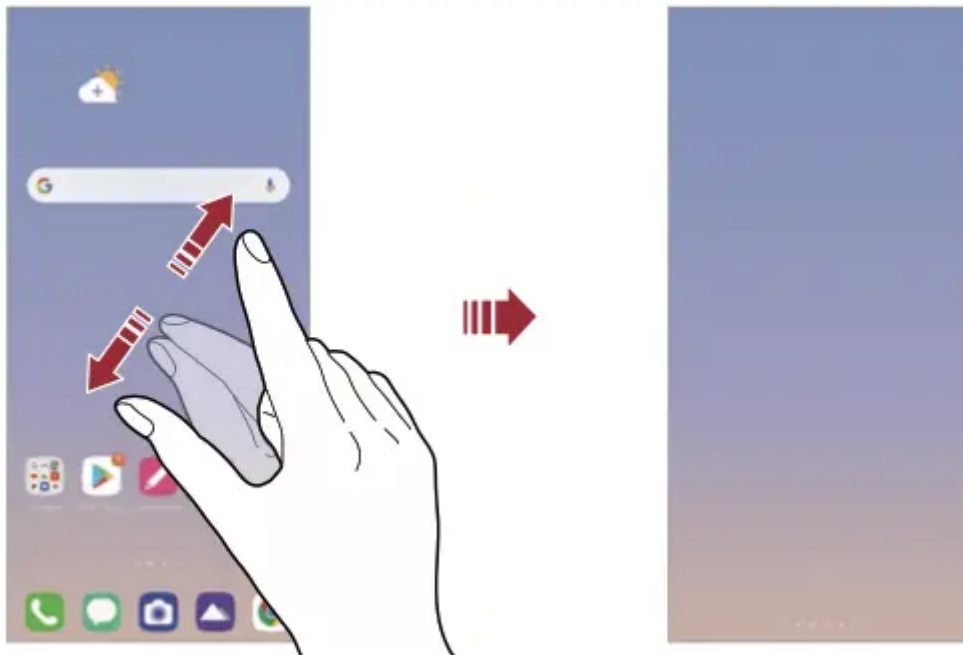
- To rearrange the Home screen canvases, touch and hold on a canvas, then drag it to a desired location.
- To add a widget to the Home screen, touch and hold on a blank area of the Home screen, then select Widgets.
- To change wallpapers, themes and icon styles, touch and hold on a blank area of the Home screen, then select Wallpaper & theme. You can also tap Settings on the home screen and tap Display > Home screen > Wallpaper, then select desired options from Wallpaper, Theme and Icon to apply to the device.
- To change the grid, touch and hold on a blank area of the Home screen, then select Grid. Tap the desired grid, then tap Apply.
- To configure the Home screen settings, touch and hold on a blank area of the Home screen, then select Home screen settings. See Home screen settings for details.
- To view or reinstall the uninstalled apps, touch and hold on a blank area of the Home screen, then select App trash. See App trash for details.
- To change the default screen, touch and hold on a blank area of the Home screen, move to desired screen, tap , then tap the screen once more.



Viewing the background theme

You can view only the background image by hiding the apps and widgets on the Home screen. Spread two fingers apart on the Home screen.

- To return to the original screen, which displays apps and widgets, pinch your fingers on the Home screen or tap .



Moving apps on the Home screen

On the Home screen, touch and hold an app, then drag it to a desired location.

- To keep frequently used apps at the bottom of the Home screen, touch and hold an app, then drag it to the quick access area at the bottom.
- To remove an icon from the quick access area, drag the icon to the Home screen.

Using folders from the Home screen

Creating folders


On the Home screen, touch and hold an app, then drag it over another app.

- A new folder is created and the apps are added to the folder.

Editing folders

On the Home screen, tap a folder and do one of the following actions.

- To edit the folder name and color, tap the folder name.
- To add apps, touch and hold an app, then drag it over the folder and release it.
- To remove an app from the folder, touch and hold the app and drag it to outside the folder. If the removed app is the only one app that existed in the folder, the folder is removed automatically.

- You can also add or remove apps after tapping  in the folder.



- You cannot change the folder color while using downloaded theme.

Home screen settings

You can customize the Home screen settings.

1. On the home screen, tap Settings > Display > Home screen.
2. Customize the following settings:
 - Select Home: Select a Home screen mode.
 - Wallpaper: Change the Home screen background wallpaper.
 - Icon shape: Choose a desired shape for icons from the options provided.
 - Google feed: Select whether to display Google feed on the screen located left to the main Home screen.
 - Sort apps by: Set how apps are sorted on the Home screen.
 - Hide apps: Select apps you want to hide from the Home screen.
 - Loop Home screen: Enable to allow continuous Home screen scrolling (loop back to the first screen after the last screen).



- This function is not available when Google feed is selected for Left Home screen.
 - Search: Search by swiping down on the Home screen.
 - Home screen lock: Enable to prevent apps and widgets from being rearranged or removed.

Screen lock

Screen lock overview

Your device's screen turns off and locks itself if you press the Power/Lock key. This also happens after the device is left idle for a specified period of time.

If you press the Power/Lock key when a screen lock is not set, the Home screen appears immediately.

To ensure security and prevent unwanted access to your device, set a screen lock.



- A screen lock also prevents unnecessary touch input on the device screen and reduces battery consumption. We recommend that you activate the screen lock while not using the device.

Setting a screen lock

There are several options available for configuring the screen lock settings.

1. On the home screen, tap Settings > Lock screen & security > Select screen lock and then select the method you prefer.

2. Customize the following settings:

- None: Deactivate the screen lock function.
- Swipe: Swipe on the screen to unlock the screen.
- Pattern: Draw a pattern to unlock the screen.
- PIN: Enter a numeric password to unlock the screen.
- Password: Enter an alphanumeric password to unlock the screen.
- Fingerprints: Unlock the screen by using your fingerprint.

Customize Lock screen

You can customize lock screen.

1. On the home screen, tap Settings > Lock screen & security > Customize Lock screen.

2. Select a function you want to set.

- Wallpaper: Allow you to set the background for your Lock screen.
- Clock: Allow you to set where to position the clock on the Lock screen.
- Shortcuts: Allow you to choose apps to run on your Lock screen. This setting appears only when a screen lock is set.
- Contact info for lost phone: Allow you to set text to be displayed on the Lock screen to identify the phone's owner.

Secure lock settings

You can set secure lock settings.

1. On the home screen, tap Settings > Lock screen & security > Secure lock settings.

2. Select a function you want to set.

- Make pattern visible (shown only when Pattern is set as a screen lock): Turn on to make pattern visible.
- Lock timer: Allows you to set the amount of time before the screen automatically locks after the backlight turns off (time-out due to inactivity).
- Power key instantly locks: Enable this option to instantly lock the screen when the Power/ Lock button is pressed. This setting overrides the Security Lock timer setting.

- Show lockdown option (shown only when a screen lock is set): Enable this option to display the Lockdown icon when you press and hold the Power/Lock button. Tap the Lockdown icon to turn off Smart Lock, biometric unlocking, and notifications on the lock screen.
- Smart Lock: Allows you to set trusted devices, places, voice, and/or on-body detection that will allow your phone to remain unlocked.



- Available menu options may vary depending on the lock screen method selected.

KnockON

You can turn the screen on or off by double-tapping the screen.

On the home screen, tap Settings > Extensions > KnockON to enable the option.



• This option is available only on the Home screen provided by LG. It may not function properly on a custom launcher or on the Home screen installed by the user.

- When tapping the screen, use your fingertip. Do not use a fingernail.
- To use the KnockON feature, make sure that the proximity/light sensor is not blocked by a sticker or any other foreign substance.

Turning the screen on

Double-tap the middle of the screen.

- Tapping the top or bottom of the screen may decrease the recognition rate.

Turning the screen off

Double-tap on an empty space on the Home screen and Lock screen. You can also double-tap an empty space on the status bar.

Memory card encryption

You can encrypt and protect data saved on the memory card. The encrypted data in the memory card cannot be accessed from another device.

1. On the home screen, tap Settings > Lock screen & security > Encryption & credentials > Encrypt SD card.
2. Read the on-screen overview of memory card encryption and then tap Continue to continue.
3. Select an option and tap Encrypt now.
 - New data encryption: Encrypt only data that is saved on the memory card after encryption.
 - Full encryption: Encrypt all the data currently saved on the memory card.

- Exclude media files: Encrypt all files, except for media files such as music, photos and videos.



- Once memory card encryption starts, some functions are not available.
 - If the device is turned off while encryption is underway, the encryption process will fail, and some data may be damaged. Therefore, be sure to check if the battery level is sufficient before starting encryption.
 - Encrypted files are accessible only from the device where the files were encrypted.
 - The encrypted memory card cannot be used on another device. To use the encrypted memory card on another mobile device, format the card.
 - You can activate memory card encryption even when no memory card is installed into the device. Any memory card that is installed after encryption will automatically be encrypted.

Taking screenshots


You can take screenshots of the current screen you are viewing.

Via a shortcut

Press and hold the Power/Lock key and the Volume Down key at the same time for at least two seconds.

- Screenshots can be viewed from the Screenshots folder in Gallery.


Via Screenshot

On the screen where you want to take a screenshot, drag the status bar downwards, then tap .

Entering text

Using the Smart toolbar

You can use various keyboard input methods in one place. You can select the desired input method from the top of the keyboard.

1. Select the desired keyboard input method from the Smart toolbar.
2. Tap , then touch and drag each tool to reorganize as desired.





- Some supporting input methods may differ depending on the device you have.
- You can turn on or off the Smart tool feature from the keyboard settings.

Smart Tool

	Tap to hide the smart tools.
	Tap to add emoticons.
	Tap to add emojis.
	Tap to open Draw chat.
	<p>Tap to enter text by using voice.</p> <ul style="list-style-type: none"> • To maximize the voice command recognition, speak clearly. • To enter text with your voice, make sure that your device is connected to a network. • To select the language for voice recognition, tap > Languages on the voice recognition screen. • This function may not be supported, or the supported languages may differ depending on the service area.
	Tap to access keyboard settings.
	<p>Tap to open the clip tray.</p> <p>For more information, please see Clip Tray.</p>
	<p>Tap to enter text by handwriting.</p> <p>It is required to download the input language data for handwriting. Tap DOWNLOAD to download the input language data for handwriting.</p>
	Tap to let the keyboard float, when you use the Multi-window feature. You can also move the keyboard to the desired location.
	Tap to bring the smart tools back.

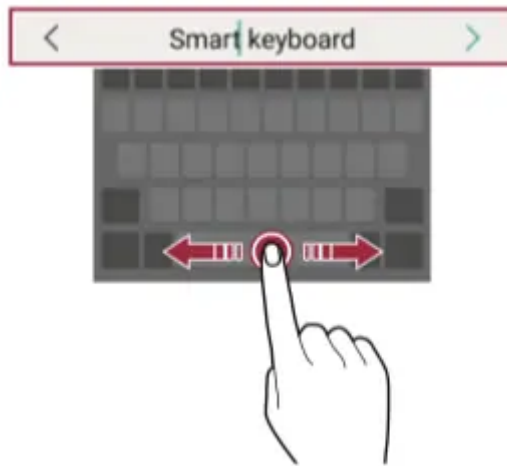
Using the Smart keyboard

You can use the Smart keyboard to enter and edit text.

With the Smart keyboard, you can view text as you type without bothering to alternate between the screen and a conventional keyboard. This allows you to easily find and correct errors when typing.

Moving the cursor

With the Smart keyboard, you can move the cursor to the exact position you want. When typing text, touch and hold on the space bar and then drag left or right.



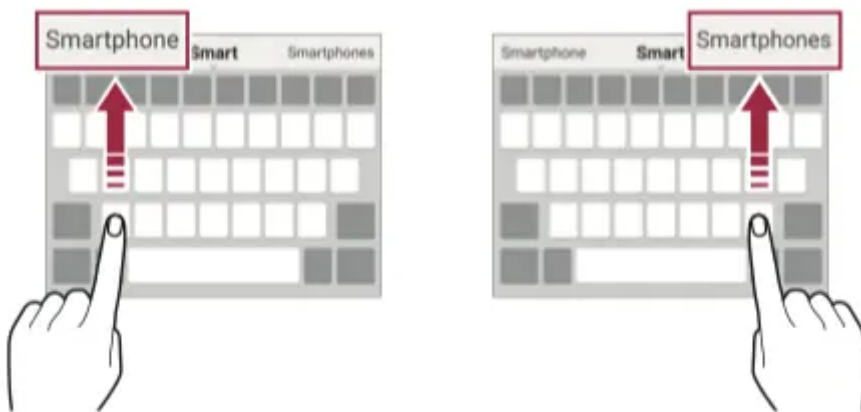
- This option is available only on the QWERTY keyboard.

Suggesting words

Smart keyboard automatically analyzes your usage patterns to suggest frequently used words as you type. The longer you use your device, the more precise the suggestions are.

Enter text, then tap a suggested word.


- The selected word is automatically entered. You do not need to manually type every letter of the word.



Changing the QWERTY keyboard layout

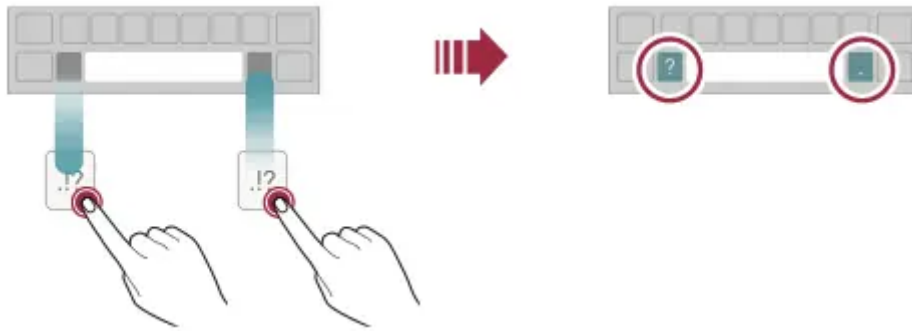
You can add, delete or rearrange keys on the bottom row of the keyboard.

1. On the home screen, tap Settings > System > Language & keyboard > Manage keyboards > LG Keyboard > Keyboard height and layout QWERTY keyboard layout.

You can also tap on  the keyboard and tap Keyboard height and layout > QWERTY keyboard layout.

2. Tap a key on the bottom row, then drag it to a desired position.

- You can select and organize frequently used symbols.



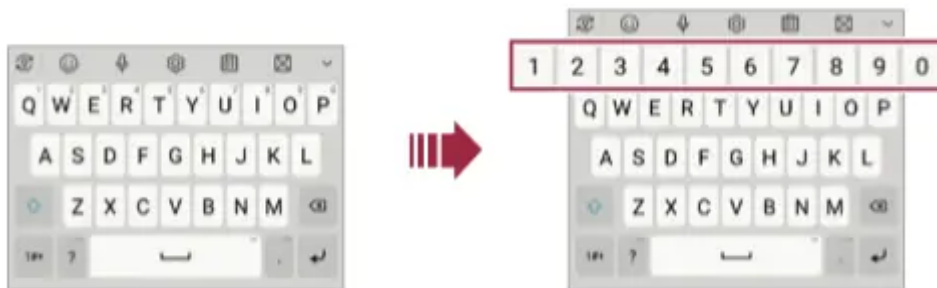
- This option is available on the QWERTY, QWERTZ and AZERTY keyboards.
- This function may not be supported for some languages.

Extended keyboard mode

You can set to display number keys on the top row of the keyboard.

On the home screen, tap Settings > System > Language & keyboard > Manage keyboards > LG Keyboard > Keyboard height and layout > Extended keyboard .

You can also tap on the keyboard and tap Keyboard height and layout > Extended keyboard .



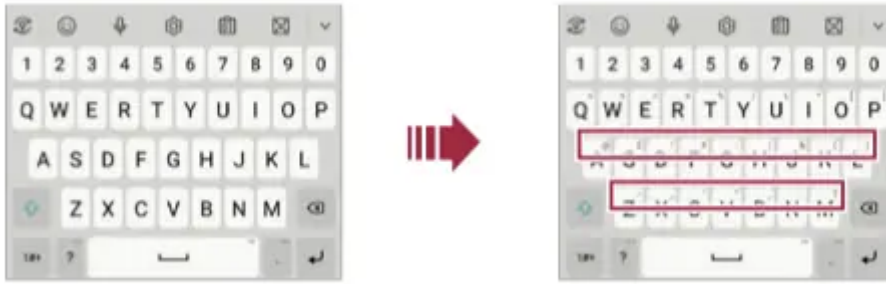
Showing symbols on keys

You can set to show symbols in the character keys.

1. On the home screen, tap Settings > System > Language & keyboard > Manage keyboards > LG Keyboard > Keyboard height and layout > Symbols on keys .

You can also tap on the keyboard and tap Keyboard height and layout > Symbols on keys .


2. To enter a symbol, touch and hold the corresponding key and select the desired symbol.



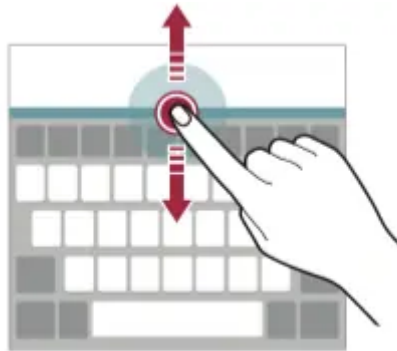
Customizing the keyboard height

You can customize the keyboard height to maximize hand comfort when typing.

1. On the home screen, tap Settings > System Language & keyboard > Manage keyboards > LG Keyboard > Keyboard height and layout > Keyboard height.

You can also tap  on the keyboard and tap Keyboard height and layout > Keyboard height.


2. Adjust the keyboard height.



Selecting a landscape keyboard mode

You can select a landscape keyboard mode from several choices.

1. On the home screen, tap Settings > System > Language & keyboard > Manage keyboards > LG Keyboard > Keyboard height and layout > Keyboard type in landscape.

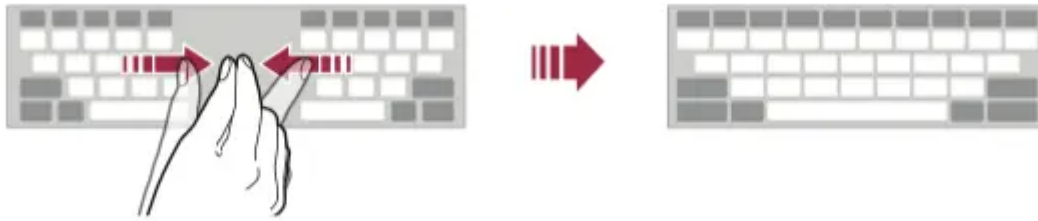
You can also tap  on the keyboard and tap Keyboard height and layout > Keyboard type in landscape.

2. Select a keyboard mode.

Splitting the keyboard

You can split the keyboard in half and place each piece on either side of the screen when the screen is in landscape mode.

To split the keyboard, turn the device horizontally and spread it apart on both sides with holding the keyboard with two fingers. To attach the keyboard, close it with pressing with two fingers.



One-handed operation mode

You can move the keyboard to one side of the screen so that you can use the keyboard with one hand.

1. On the home screen, tap Settings > System > Language & keyboard > Manage keyboards > LG Keyboard > Keyboard height and layout > One-handed operation.

You can also tap on the keyboard and tap Keyboard height and layout > One-handed operation.

2. Press the arrow displayed next to the keyboard to move the keyboard in the desired direction.



Settings

Settings

You can customize the device settings in accordance with your preferences.

On the home screen, tap Settings.




• If you enter a keyword on the search window at the top of the screen, you can conveniently access the option that needs to be set.

Network & internet

Wi-Fi


You can connect to nearby devices over a Wi-Fi network.

Connecting to a Wi-Fi network

1. On the settings screen, tap Network & internet > Wi-Fi.
2. Tap  to activate it.
 - Available Wi-Fi networks appear automatically.
3. Select a network.
 - You may need to enter the network's Wi-Fi password.
 - The device skips this process for previously accessed Wi-Fi networks. If you do not want to automatically connect to a certain Wi-Fi network, tap the network and then tap Forget.

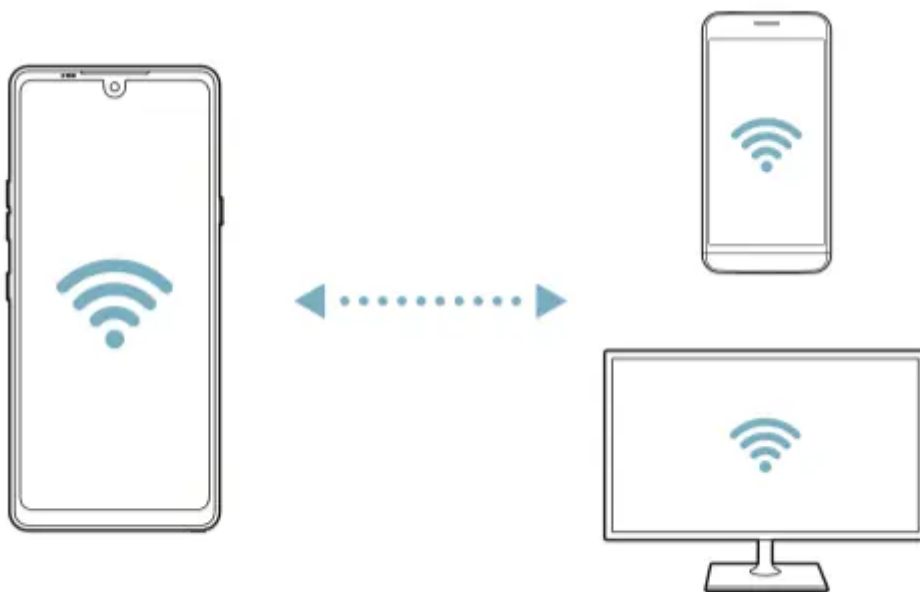
Wi-Fi Direct

You can connect your device to other devices that support Wi-Fi Direct to share data directly with them. You do not need an access point. You can connect with more than two devices by using Wi-Fi Direct.

- 1 On the settings screen, tap Network & internet > Wifi >  > Advanced Wi-Fi > Wi-Fi Direct.
 - Nearby devices that support Wi-Fi Direct automatically appear.
2. Select a device.
 - Connection occurs when the device accepts the connection request.




- The battery may drain faster when using Wi-Fi Direct.




Mobile data

You can turn mobile data on and off. You can also manage mobile data usage.

Turning on mobile data

1. On the settings screen, tap Network & internet > Mobile data.
2. Tap  to activate it.

Customizing mobile data settings

1. On the settings screen, tap Network & internet > Mobile data.
2. Customize the following settings:
 - On: Enable to use data connections on mobile networks.
 - Limit mobile data usage: Set a limit for mobile data usage to block mobile data if the limit is reached.
 -  : Customize mobile data settings.

Call

You can customize call settings, such as voice call and international call options.



- Some features may not be supported depending on the area or service provider.

1. On the settings screen, tap Network & internet > Call.
2. Customize the settings.

Tethering

USB tethering

You can connect the device to another device via USB and share mobile data.

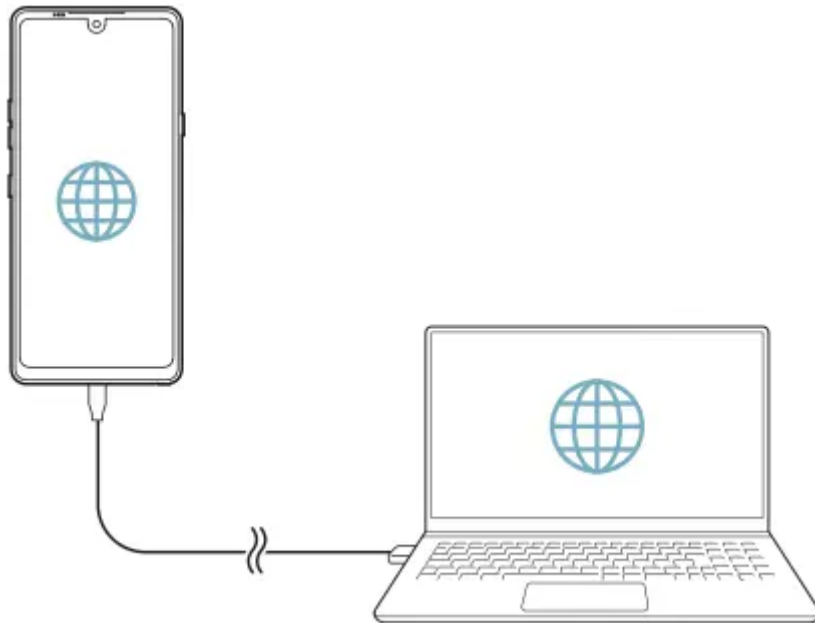
1. Connect your device and other devices via USB cable.
2. On the settings screen, tap Network & internet > Tethering > USB tethering and then tap to activate it.



- This option uses mobile data and may incur data usage fees, depending on your pricing plan. Consult with your service provider for more information.


- When connecting to a computer, download the USB driver from www.lg.com and install it on the computer.

- You cannot send or receive files between your device and a computer while USB tethering is turned on. Turn off USB tethering to send or receive files.
- Operating systems that support tethering are Window XP or higher, or Linux.



Mobile HotSpot

You can set the device as a wireless router so that other devices can connect to the Internet by using your device's mobile data.

1. On the settings screen, tap Network & internet > Tethering > Mobile HotSpot and then tap  to activate it.
2. Tap Configure Mobile HotSpot, and enter the Wi-Fi name (SSID) and password.
3. Turn on Wi-Fi on the other device, and select the name of the device network on the Wi-Fi list.
4. Enter the network password.



• This option uses mobile data and may incur data usage fees, depending on your pricing plan. Consult with your service provider for more information.



Mobile HotSpot turn off timer

When the Mobile hotspot has not been used for a specific period of time, it is automatically disconnected. You can set the time for automatic disconnection.

Allowed devices

View a list of devices permitted to access contents on your device.

Help

You can view help on using tethering and hotspots.

On the settings screen, tap Network & internet > Tethering > Help.

Airplane mode

You can turn off the call and mobile data functions. When this mode is on, functions that do not involve data, such as games and music playback, remain available.

1. On the settings screen, tap Network & internet > Airplane mode.
2. Tap TURN ON in the confirmation screen.

Wi-Fi Calling

You can use Wi-Fi calling to improve your coverage and to make phone calls over a Wi-Fi network when the network is available.

On the settings screen, tap Network & internet > Wi-Fi Calling.

Mobile networks

You can customize mobile data settings.

1. On the settings screen, tap Network & internet > Mobile networks.
2. Customize the following settings:
 - Data roaming: Turn data roaming on or off.

- Network mode: Select your preferred network mode.
- Access Point Names: View or change the access point for using mobile data services. To change the access point, select a choice from the access point list.
- Network operators: Search for network operators and connect automatically to a network.
- Network unlock: View current network lock status and check unlock eligibilities.

Sound

You can customize sound, vibration and notification settings.

On the settings screen, tap Sound and customize the following settings:

- Sound profile: Change the sound mode to Sound, Vibrate only, or Silent.
- Volume: Adjust the sound volume for various items.
- Ringtone: Select a ringtone for incoming calls. Add or delete ringtones.
- Notification sound: Select a notification ringtone. Set music saved on the device as a notification ringtone.
- Ring with vibration: Set the device to vibrate and play a ringtone simultaneously.
- Ringtone ID: Create a ringtone for an incoming call from a particular contact.
- Flash alert for incoming call: Set the device to flash alert for incoming calls.
- Do not disturb: Set the time, range and app type to receive notification messages. Receive notification messages only on particular days of the week.
- Sound quality and effects: Set the sound quality and effects.
- Vibration type: You can select the type of vibration when receiving calls.
- Vibrate on tap: Set the device to vibrate when you tap certain items on the screen.
- Dialing keypad sound: Enable the keypad sound effect.
- LG Keyboard sound: Enable LG keyboard sound effect.
- Touch sound: Enable the sound effect for tapping an item.
- Screen lock sound: Enable the sound effect to play when the screen is locked or unlocked.

Notifications

You can check a list of installed apps, and configure the settings for notifications.

1. On the settings screen, tap Notifications.
2. Customize the settings as desired.

Display

The Display category allows you to manage various display settings.

On the settings screen, tap Display and customize the following settings:

- Home screen: Customize settings for the Home screen. See Home screen settings for details.
- New Second Screen: Select how the status bar and app corners will look.
- Navigation bar: Configure the Navigation bar. See Using Navigation bar for details.
- Comfort view: Set the device to reduce amount of blue light on screen to reduce eye strain.
- Night mode: You can apply a dimmed screen theme to avoid glare on the screen at night time.
- Font: Change the font size, boldness, or face.
- Display size: Set the items on the screen to a size that is easy for you to see. Some items may change position.



- When you change the screen resolution, currently running apps are closed.

- App scaling: Adjust the screen size of apps.



Aspect ratio

- This device uses 20.5:9 aspect ratio.

- Some downloaded apps may not support 20.5:9 aspect ratio. In this case, select the most optimal screen ratio for the app or consult the app provider for more information.

- You can select the aspect ratio for individual apps. On the home screen, tap Settings >

Display App > scaling. Select an app, then select the desired aspect ratio from None (Original), Compatibility (16:9), Standard (16.7:9), and Full screen.

- Brightness: Use the slide bar to change the device's screen brightness. To automatically adjust screen brightness according to ambient light intensity, tap the Auto switch.
- Screen timeout: Automatically turn off the screen when the device is left idle for a specified period of time.
- Auto-rotate screen: Automatically rotate the screen according to the device's orientation.
- Screen saver: Display a screen saver when the device is connected to the holder or charger. Select a screen saver type to display.
- One-handed screen: Make the screen size smaller to conveniently use the device with one hand. Drag the Home touch button at the bottom of the screen to the left or right.

Wallpaper & theme

You can select wallpaper, screen theme or icon style for your device.

1. On the settings screen, tap Wallpaper & theme.
2. Tap Wallpaper, Theme or Icon to customize the settings.

Lock screen & security

You can customize lock screen and security settings. On the settings screen, tap Lock screen & security.

- Google Play Protect: Scan the device periodically for potentially harmful codes or apps.
- Find My Device: Remotely track the device location. You can also protect your data securely if you lost your device.
- Security update: Check for software update and configure automatic installation settings.
- Google Play system update: Check for Google Play system update.
- Select screen lock: Select the desired screen lock method. See [Setting a screen lock for details](#).
- Customize Lock screen: Change the information displayed on the locked screen. See [Customize Lock screen for details](#).
- Fingerprints: Use your fingerprint to unlock the screen or content. See [Fingerprint recognition overview for details](#).
- Content lock: Allows you to set a lock type (password or pattern) for your QuickMemo+ and Gallery files.
- Encryption & credentials: Configure the settings for SD card encryption and credentials.
 - Encrypt SD card: Encrypt the memory card to prevent use on another device. See [Memory card encryption for details](#).
 - Credential protection: View the type of the storage where the security certificate will be saved.
 - Trusted credentials: View your system's root CA certificates and user-installed CA certificates.
 - User credentials: View and change secure certificate information stored on your device.
 - Install from storage: Install a secure certificate from a storage.
 - Clear credentials: Delete user-installed secure certificates and related credentials.
- Set up SIM card lock: Lock or unlock the USIM card, or change the password (PIN).

- Phone administrators: Allows privileges to restrict the control or use of the device to particular apps.
- Trust agents: View and use trust agents installed on the device.
- Screen pin: Fix the app screen so that only the currently active app can be used.
- Usage access: View details on usage of apps on the device.

Privacy

You can find and adjust all your privacy settings.

1. On the settings screen, tap Privacy.

2. Customize the settings.

- Permission manager: Allows you to check and change the permissions granted to the apps.
- Lock screen: Allows you to set notifications to show on the lock screen.
- Make passwords visible: Enable this option to briefly show each character of the password as you type it so you can see what you've entered.
- Autofill service from Google: Enable this option to enter your information saved in your account such as password, address, or credit card number with a single tap. You can also disable this option, use the Google Autocomplete feature, or add a new service account.
- Google location history: Allows you to enable or disable Location History. When enabled, Google periodically stores and uses your phone's most recent location data in connection with your Google Account.

From the Location History screen, tap to view and/or manage your location data.

- Activity controls: Select activities and information which you want Google to save.
- Ads: Allows you to check the advertising ID and set the personalized ads.
- Usage & diagnostics: Enable this option to help improve the Android experience by automatically sending diagnostic, device, and app usage data to Google.

Battery

You can view the current battery information or turn on power-saving mode.

1. On the settings screen, tap Battery.


2. Customize the following settings:

- Battery usage: View the battery usage details.
- Battery percentage on status bar: Displays the remaining battery level as a percentage on the status bar.

- Adaptive battery: Allows you to save the battery by stopping apps running in the background.
- Background restrictions: Enable this option to restrict background apps to save the battery while using the device. Restricted apps for power saving may not work properly or may not send you notifications.
- Battery saver: Reduce battery consumption by cutting down some device settings, such as the display brightness, speed and vibration intensity.
- Power saving exclusions: Select apps to use without any functional limitation while in power saving or battery optimization mode.

Storage

You can view and manage internal storage on the device or storage space of the memory card.

1. On the settings screen, tap Storage.
2. Customize the following settings:
 - Internal storage: View the total storage space and free space in the device's internal storage. View a list of apps in use and the storage capacity for each app.
 - SD card: View the total storage space and free space in the memory card. This option appears only when a memory card is inserted. To unmount the memory card, tap  .

Appendix

FAQ

This chapter lists some problems you might encounter when using your device. Some problems require you to call your service provider, but most are easy to fix yourself.

Device overheats

Device overheats while it is in use.

In the following cases, the battery consumption increases and the device may overheat:

- When you turn on the device for the first time or back up the data
- When running multiple apps simultaneously
- When multiple apps are running in the background
- When downloading large files while making a video call or recording a video
- When using features that require high power
- When watching video streaming on the internet, or recording a long video

- When playing high-end games for long time
- When using the device with maximum screen brightness for a long time
- When using lots of mobile data
- When using Wi-Fi hotspot or tethering
- When synchronizing the data for multiple accounts simultaneously
- Other cases
- When roaming overseas
- When using the device in areas with weak signals or no reception
- When charging the device with the charger/USB cable port that is damaged or contaminated with foreign substance



- Some of the above cases may not apply depending on the features and apps.

Device overheats while charging.

- The device and the charger may become hot while charging. During wireless charging or fast charging (if supported), the device may become even hotter. If the battery temperature rises above a certain level, the device may stop charging.
- Disconnect the charger from the device and close any running apps. Let the device cool down before charging the device or running an app again.
- Stop charging if the charger/USB cable port at the lower part of the device overheats, and contact the LG Authorized Service Center.

How to solve overheating of the device

- Close any running apps or features, and let the device cool down.
- Always update the software to the latest version.
- Turn off Wi-Fi, Bluetooth, or GPS features while not using them.
- Close apps you don't use.
- If you are using the device with maximum screen brightness, decrease the brightness.
- If the device overheats for a prolonged period, stop using it for a while.

If the device continues to overheat, contact the LG Authorized Service Center.

Usage limitations when the device overheats

If the device overheats while using it or charging, some features, apps, or even the device may be turned off.

This is a normal operation for the devices that support this feature.

- If the device temperature rises above a certain level, a warning message appears.
- If you play high-end games, record videos, or upload large files, the device may overheat for a prolonged period. In this case, a warning message may appear to notify automatic shutdown.

Turn off the device or close any running apps or features, and let the device cool down.

- The screen brightness and the operating speed may be limited to cool down the device. Any running apps or features may slow down or stop. The device may stop charging.

SIM card error

Make sure the SIM card is correctly inserted.

No network connection or dropped network

Signal is weak. Move to a window or an open area.

You are outside the carrier network area. Move and check the network.

Calls are not available

New network not authorized.

Make sure you have not set call barring for the incoming number.

Make sure you have not set call barring for the number you are dialing.

Device cannot be turned on

When the battery is completely discharged, your device will not turn on. Fully charge the battery before turning on the device.

Charging error

Make sure the device is charging at a moderate temperature. Check the charger and its connection to the device.

Use only in-box accessories which are authorized by LG.

The battery depletes faster than when first purchased

When you expose the device or the battery to very cold or hot temperatures, the battery life may be reduced.

Battery consumption will increase when you use certain features or apps, such as GPS, games or the Internet.

The battery is consumable and the battery life will get shorter over time.

Error messages appear when launching the camera

Charge the battery.

Free some memory by transferring files to a computer or deleting files from your device.

Restart the device.

If you are still having trouble with the camera app after trying these tips, contact the LG Authorized Service Center.

The photo quality is poor

The quality of your photos may vary, depending on the surroundings and the photography techniques you use.

When you take photos and videos, keep in mind that the image quality with standard angle is better than that with wide-angle.

If you take photos in dark areas, at night or indoors, image noise may occur or images may be out of focus.

If you have any problems, reset the options.

The touch screen responds slowly or incorrectly

If you attach a screen protector or optional accessories to the touch screen, the touch screen may not function properly.

If you are wearing gloves, if your hands are not clean while touching the touch screen or if you tap the screen with sharp objects or your fingertips, the touch screen may malfunction.

The touch screen may malfunction in humid conditions or when exposed to water.

Restart your device to clear any temporary software bugs.

If the touch screen is scratched or damaged, contact the LG Authorized Service Center.

Hangs or freezes

Restart the device

- If your device freezes or hangs, you may need to close apps or turn the device off and then on again.

Perform a boot-up

- Press and hold the Power/Lock key and the Volume Down key until the device restarts.

Reset the device

- If the methods above do not solve your problem, perform a factory data reset.
- On the settings screen, tap System Restart & reset Factory data reset.
 - Reset all settings for the device and delete data. Before performing the factory data reset, remember to make backup copies of all important data stored in the device.
 - If you registered a Google account to the device, you must sign in to the same Google account after resetting the device.

Bluetooth device is not located

Make sure the Bluetooth wireless feature is activated on your device. Make sure the Bluetooth wireless feature is activated on the device you wish to connect to.

Make sure your device and the other Bluetooth device are within the maximum Bluetooth range (10 m).

If the tips above do not solve your problem, contact the LG Authorized Service Center.

A connection is not established when you connect the device to a computer

Make sure the USB cable you are using is compatible with your device. Make sure you have the proper driver installed and updated on your computer.

Downloaded application causes a lot of errors

Application has problems.

Remove and reinstall the application.

Warning

This content is compiled from multiple sources and is provided for reference purposes only. It may not be complete or fully applicable to all situations. If you are unable to resolve your issue, please contact the product manufacturer or an authorized service provider for official support.