


WiFi Water / Flood Detector

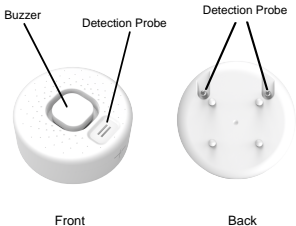
INSTRUCTION



Please read this manual carefully before use
and keep it for future reference.

 **WARNING:** Do not immerse the product completely in water. After the leak alarm is triggered, remember to dry the metal probe.

Product Configuration:



Usage:

This detector can be installed anywhere a leak needs to be detected. The detector supports both top and bottom detection probes. They are used to detect dripping alarms and leak alarms. Once the detector is triggered, you will receive APP alarm message, and detector will make loudly sound alarm.

Specifications:

Battery: AAA 1.5V x2 (not include)

Standby Current: $\leq 42\mu\text{A}$

Protocol: IEEE 802.11b/g/n

Operating Temperature: $-10^{\circ}\text{C}--60^{\circ}\text{C}$ ($14^{\circ}\text{F}--140^{\circ}\text{F}$)

Operating Humidity: $\leq 95\%RH$

Storage Temperature: $-10^{\circ}\text{C}--60^{\circ}\text{C}$ ($14^{\circ}\text{F}--140^{\circ}\text{F}$)

Storage Humidity: $\leq 95\%RH$

Detection mode: Water sense detection

Installation mode: Place on the floor

Wireless Type: 2.4GHz WiFi

Standby Time: 4-6 months

Size: 65*31.5mm



TuyaSmart / Smart life

CE RoHS

How to install the batteries?

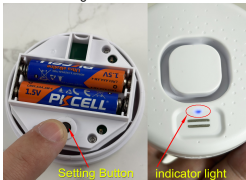
1. Insert the blue card into the gap, with the side with the round groove facing up, and pry open the outer casing.



2. Install 2 pcs 1.5V AAA batteries, pay attention to the \pm poles. (Product does not include batteries)



3. Long press the setting button about 6 seconds, until the indicator light flashes rapidly. The detector will enter into WIFI configuration mode.



4. After successfully connecting to the WIFI network, make sure the marking lines are aligned and close the bottom cover.



Download App:

Search and download “Smart Life” in APP Store.
Also you can scan below QR code directly to download the app.



Run App:

1. Install “Smart life” in your smartphone
2. Register and login the app.

There are 2 methods to connect the device to wifi router, you can choose Smart wifi mode or AP mode. Recommended the Smart WiFi Mode.

Connect to wifi (Smart WiFi Mode).

1. (MobilePhone) Please enable the bluetooth function of your phone.
2. (Device) Press and hold: “Setting Button” on the detector for 6 seconds, the LED indicator will blink

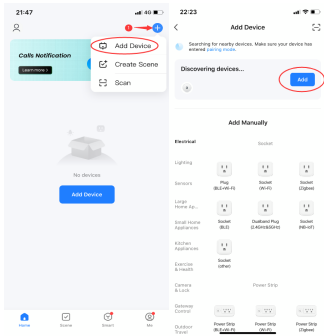
rapidly. The device will be in Smart Wi-Fi Mode.

3. (APP) Click "+". Choose: Add Device.

4. APP will discover the devices, then click "Add".

5. Click "Next". Then wait to connect successfully.

(Only compatible 2.4G WiFi, please not 5G WiFi)



Connect to wifi (AP Mode).

1. (Device) Press and hold: "Setting Button" on the detector for 6 seconds, the LED indicator will blink rapidly, and then press and hold: "Setting Button" on the detector for 6 seconds again, the LED indicator will blink slowly. The device will be in AP Mode.
2. (APP) Click "+". Choose: Add Device.
3. Choose: "Sensors", then choose: "Flood Detector"
4. Input your wifi name and password. Click: "Next".
5. Click: "Confirm the indicator is blinking".
6. Choose: "Blink Slowly".
7. Connect your phone to WiFi: SmartLife-xxxx
8. Back to APP until connect wifi successfully.

How to test it?

Place a drop of water on the metal probe of the detector, you can see the LED indicator light come on, and you will receive APP alert. If you can not receive the APP alert message, please make sure water cover the 2 metal pins at the same time, and make sure all the app notification permissions are enabled. **After test the device, please wipe the water off the metal probe.**

FCC Warning:

This equipment has been tested and found to comply with the limits for a Class B digital device, pursuant to part 15 of the FCC Rules. These limits are designed to provide reasonable protection against harmful interference in a residential installation. This equipment generates, uses and can radiate radio frequency energy and, if not installed and used in accordance with the instructions, may cause harmful interference to radio communications. However, there is no guarantee that interference will not occur in a particular installation. If this equipment does cause harmful interference to radio or television reception, which can be determined by turning the equipment off and on, the user is encouraged to try to correct the interference by one or more of the following measures:

- Reorient or relocate the receiving antenna.
- Increase the separation between the equipment and receiver.
- Connect the equipment into an outlet on a circuit different from that to which the receiver is connected.
- Consult the dealer or an experienced radio/TV technician for help.

Caution: Any changes or modifications to this device not explicitly approved by manufacturer could void your authority to operate this equipment.

This device complies with part 15 of the FCC Rules. Operation is subject to the following two conditions:

(1) This device may not cause harmful interference, and (2) this device must accept any interference received, including interference that may cause undesired operation.

This equipment complies with FCC radiation exposure limits set forth for an uncontrolled environment. This equipment should be installed and operated with minimum distance 0cm between the radiator and your body.