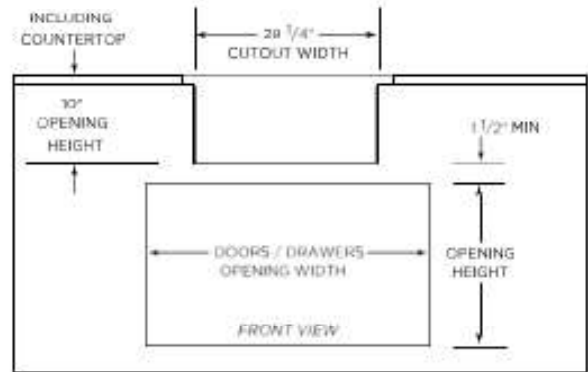
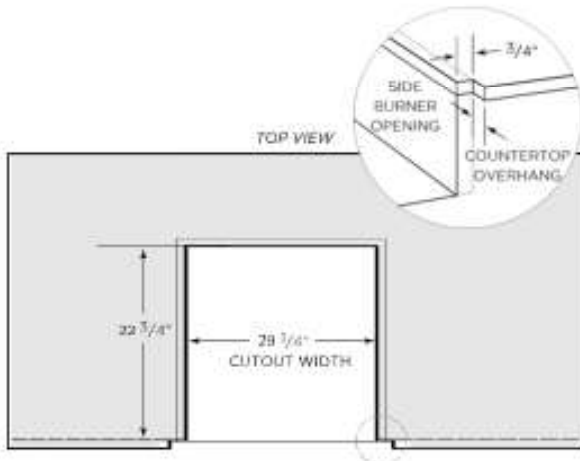
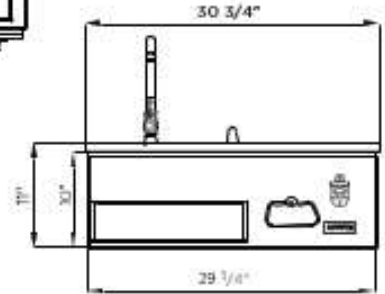
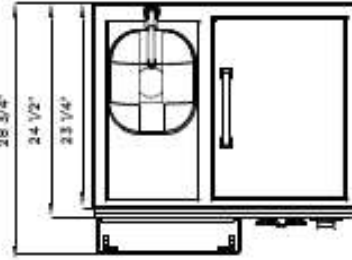
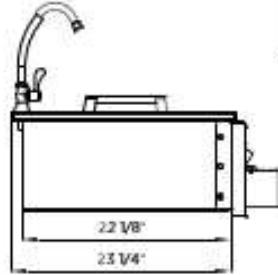
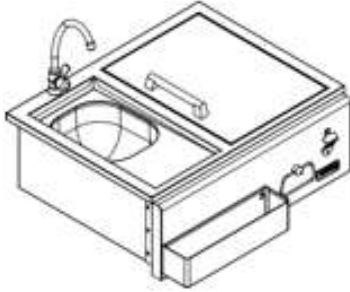


# C3-RC INSTALL GUIDE



Overall Product Dimensions			
Model No.	Height	Width	Depth
C3-RC	11"	30 3/4"	28 3/4"

Cutout Dimensions for Island			
Model No.	Height	Width	Depth
C3-RC	10"	29 1/4"	22 3/4"

## Install Notes:

- ✓ 2 anchor points are located on each side of the doors interior frame (top, bottom, left and right)
- ✓ Due to wide variance of possible building materials, anchors are not included
- ✓ When inserting your anchors be sure to use a framing square to ensure the door is not pulled out of square
- ✓ Additional framing and/or support underneath the rear (hanging portion) of the cabinet is recommended
- ✓ These specs are accurate but we always suggest having the product physically on site to ensure full understanding of how this product will coordinate with your build
- ✓ The faucet included is a single hose cold water only and uses 7/8" opening. The opening can be increased by to 1 3/8" by removing spacer to accommodate a faucet with hot and cold lines.
- ✓ When the C3-RC is located in an area with humidity and ice is placed inside, the cooler can "sweat" on the exterior of the box. Be aware that even with the drain in, this sweat could drop into your cabinet.

**Important Note to Installer:** This file is not intended to replace your Owners' Manual which contains specific safety requirements and consumer guidelines. Please refer to your Owners' Manual prior to installing or operating your built-in warming drawer.