



ART WORK SPEC

Changes Note: New

Design: Hyunwoo Lim	HQ R&D PIC: Jungran Kim	Product	Vacuum Cleaner
Size: 148mm x 210mm	Material: Wood Free 60g	Model/PJT	VS9500
Page: 32	Print Color: Black	Part Code	DJ68-00859G
Date: 2021-12-08	Post Processing : Cut	Rev No	00

Vacuum cleaner

User manual

VS20A95**** Series

- Before operating this unit, please read the instructions carefully.
- For indoor use only



SAMSUNG

Contents

PREPARATION

Safety information 3

DESCRIPTION

Parts overview 12

Accessories 13

OPERATION

Clean Station 14

Installing the Clean Station 14

Using the Clean Station 14

Vacuum cleaner 15

Charging the battery 15

Using the vacuum cleaner 16

Using the Accessory Cradle 18

Using the accessories 19

MAINTENANCE

Maintenance 21

Cleaning the Clean Station 21

Cleaning the vacuum cleaner 22

APPENDIX

Notes and cautions 25

Installation 25

Battery usage 25

Operation 26

Maintenance 29

Troubleshooting 30

Product specification

Charging and cleaning time may differ depending on the brushes and the conditions of use.

Model		VS20A95**** Series
Power consumption (Vacuum cleaner)		Based on a handy vacuum cleaner: 580 W
Battery specification		Li-ion 25.2 V, 2200 mAh, 7 cell
Weight (Vacuum cleaner)		2.7 kg (Jet Dual Brush)
Size	Vacuum cleaner	Width 250 mm x Depth 210 mm x Height 1,000 mm
	Clean Station	Width 300 mm x Depth 300 mm x Height 850 mm
Charging time		3.5 hours
Cleaning time (Default: [MID])	Combination Tool / Extension Crevice Tool	Approx. 60 min. [MIN] / Approx. 30 min. [MID] / Approx. 10 min. [MAX] / Approx. 3 min. [JET]
	Jet Dual Brush	Approx. 42 min. [MIN] / Approx. 24 min. [MID] / Approx. 14 min. [MAX] / Approx. 8 min. [JET]
	Slim Action Brush	Approx. 50 min. [MIN] / Approx. 25 min. [MID] / Approx. 15 min. [MAX] / Approx. 9 min. [JET]
	Wet Brush	Approx. 100 min.

* Cleaning time doubles when you use two batteries consecutively.

Safety information

- Before operating the appliance, please read this manual thoroughly and retain it for your reference.
- Because the following operating instructions cover various models, the characteristics of your vacuum cleaner may differ slightly from those described in this manual.

Caution/Warning symbols used

WARNING

Indicates that a danger of death or serious injury exists.

CAUTION

Indicates that a risk of personal injury or material damage exists.

Other symbols used

NOTE

Indicates that the following text contains additional important information.

Failure to meet these requirements could cause damage to the internal parts of the vacuum and void your warranty.

General

- Read all instructions carefully. Before switching the vacuum on, make sure that the voltage of your electricity supply is the same as that indicated on the rating plate at the rear of the handy vacuum cleaner (battery contact side).
- **WARNING** : Do not use the vacuum cleaner on a wet rug or floor.
- Close supervision is necessary when any appliance is used by or near children. Do not allow the vacuum cleaner to be used as a toy. Do not allow the vacuum cleaner to run unattended at any time. Use the vacuum cleaner only for its intended purpose as described in these instructions.
- Do not use the vacuum cleaner without a Dustbin.
- Empty the Dustbin before it is full to maintain the highest efficiency.
- Do not use the vacuum cleaner to pick up matches, live ashes or cigarette butts. Keep the vacuum cleaner away from stoves and other heat sources. Heat can deform and discolor the plastic parts of the unit.
- Avoid picking up hard, sharp objects with the vacuum cleaner as they may damage the vacuum's parts.
- Do not block the suction or the exhaust port.
- To avoid damage, remove the plug by grasping the plug, not by pulling the cord.
- This appliance is not intended for use by persons (including children) with reduced physical, sensory or mental capabilities, or lack of experience and knowledge, unless they have been given supervision or instruction concerning use of the appliance by a person responsible for their safety. Children should not clean or perform maintenance on the vacuum without adult supervision.
- Children should be supervised to ensure that they do not play with the appliance.

-
- The battery must be removed from the main unit before cleaning or performing maintenance on the vacuum.
 - The use of an extension cord is not recommended.
 - If your vacuum cleaner is not operating correctly, switch off the power supply and consult an authorized Samsung service agent.
 - If the supply cord is damaged, it must be replaced by the manufacturer or its service agent or a similarly qualified person to avoid any electrical hazards.
 - Do not use to suction up water.
 - Do not immerse in water for cleaning.
 - Please contact Samsung or a Samsung service center for a replacement if one is needed.

Clean Station

- Do not modify the polarized plug to fit a non-polarized outlet or extension cord.
- Do not use outdoors or on wet surfaces.
- Unplug the Clean Station from the outlet when not in use and before servicing.
- Use only the Clean Station supplied by the manufacturer to recharge.
- Do not use with a damaged cord or plug.
- Do not pull or carry by the cord, use the cord as a handle, close a door on the cord, or pull the cord around sharp edges or corners. Keep the cord away from heated surfaces.
- Do not use extension cords or outlets with inadequately rated current.
- Do not charge a non-rechargeable battery.
- Do not unplug by pulling on the cord. To unplug, grasp the plug, not the cord.
- Do not mutilate or incinerate batteries as they will explode at high temperatures.
- Do not attempt to open the Clean Station. Repairs should be only carried out by a qualified Samsung service center.
- Do not expose the Clean Station to high temperatures or allow moisture or humidity of any kind to come into contact with the Clean Station.

Installation

- If you have a problem with installing the Clean Station, contact a Samsung service center.
- ※ Injury or product malfunction from not installing the Clean Station may not be compensated.

Vacuum cleaner

- Do not pick up hard or sharp objects such as glass, nails, screws, coins, etc.
- Do not use without a filter in place. When servicing the unit, never put fingers or other objects into the fan chamber in case the unit accidentally turns on.
- Do not put any objects into openings. Do not use with any openings blocked. Keep openings free of dust, lint, hair, and anything that may reduce air flow.
- Do not pick up toxic materials (chlorine bleach, ammonia, drain cleaner, etc.).
- Do not pick up anything that is burning or smoking, such as cigarettes, matches, or hot ashes.
- Do not use the vacuum cleaner in an enclosed space filled with vapours given off by oil based paint, paint thinner, moth proofing substances, flammable dust, or other explosive or toxic vapours.

Power related

WARNING

- Do not bend the power cord with excessive force or put heavy objects on the power cord.
 - Electric shock or fire may occur.
- When the vacuum is used in a veranda or an area where water is used, make sure water does not come into contact with the power cord or the power plug.
- If there is dust, water, etc. on a pin or contact point of the power plug pin, wipe them carefully.
 - Abnormal operation or electric shock may occur.
- Do not pull the power cord and do not touch the power plug with wet hands.
 - Electric shock or fire may occur.
- Do not plug the Clean Station into a power source with the incorrect voltage. Do not plug the Clean Station into a multi-plug outlet or power strip.
 - Electric shock or fire may occur.
- Do not use a damaged power plug, power cord, or loose power outlet.
 - Electric shock or fire may occur.
- If the power cord is damaged, have a Samsung authorized service center replace the power cord with a new power cord.
 - Electric shock or fire may occur.

Operation

WARNING

- The Clean Station should be placed and used on a stable floor.
 - If the product falls over, an injury or product and floor damage may occur.
- Do not place or use the product on an uneven floor, a carpet, a living room table, or a desk etc.
 - If the product falls over, an injury or product and floor damage may occur.
- Do not place the product at a wall behind which pipes (gas or water etc.) or electrical cables are installed.
- Do not cause a short circuit by touching the charging terminal with chop sticks, metal screw drivers, etc.
 - Product malfunction or electric shock may occur.
- Make sure that the charging terminals of the vacuum cleaner and the Clean Station do not come into contact with a conductor such as a bracelet, watch, metal rod, nail, etc.
- Make sure that any liquid such as water or juice is not allowed to enter the vacuum cleaner or the Clean Station.
 - Electric shock or fire may occur.
- As the Clean Station is designed for the use of Samsung Jet cordless vacuum cleaner only, do not use the Clean Station for other electronic appliances and other purposes.
 - Severe damage to the Clean Station or fire may occur.
- Do not vacuum liquid, blades, pins, embers, flour, etc. during cleaning.
 - Abnormal operation or product damage may occur.
- Do not use the vacuum cleaner to pick up liquid such as spilled beverages or pet waste.
- The brush and air outlet should not be blocked during cleaning.
 - Product malfunction or fire may occur due to overheating of the product.

- This product is intended for household use only. (Do not use this product for experimental, commercial, or industrial cleaning.)
 - Abnormal operation or product damage may occur.
 - Outdoor cleaning: stone and cement powder
 - Billiards: chalk powder
 - Hospital aseptic room
- Do not ride on the product or give a severe shock to the product.
 - An injury or product damage may occur.
- Before carrying the Accessory Cradle, detach the charger first.
 - The charging terminal or the power cord is damaged and electric shock may occur.
- Do not use the product near heating appliances such as heaters, or in areas containing combustible sprays, or flammable materials.
 - Fire or product deformation may occur.
- When using the vacuum cleaner, be careful not to hurt yourself on the moving or spinning parts.
 - Be careful not to suction body parts (Hair, hands, etc.) into the spin brush (drum).
- When cleaning the wall or ceiling, you should use both hands.
 - If you clean with one hand, you can damage your wrist or drop the vacuum and cause an injury or damage the vacuum.
- Make sure filters are inserted correctly.
 - Suction power may decrease.
 - If dust enters inside the motor of the vacuum cleaner, product damage may occur.
 - The product may not operate.
- When picking up sharp objects such as sand with the vacuum cleaner, they may scratch the inner part of the Dustbin.
- If there is a gas leak or combustible spray such as a dust remover is used, do not touch the power outlet and open the window for ventilation.
 - An explosion or fire may occur.

- If the product makes a strange sound or emits a smell or smoke, turn off the product immediately, and then contact a Samsung service center.
 - Electric shock or fire may occur.

Maintenance

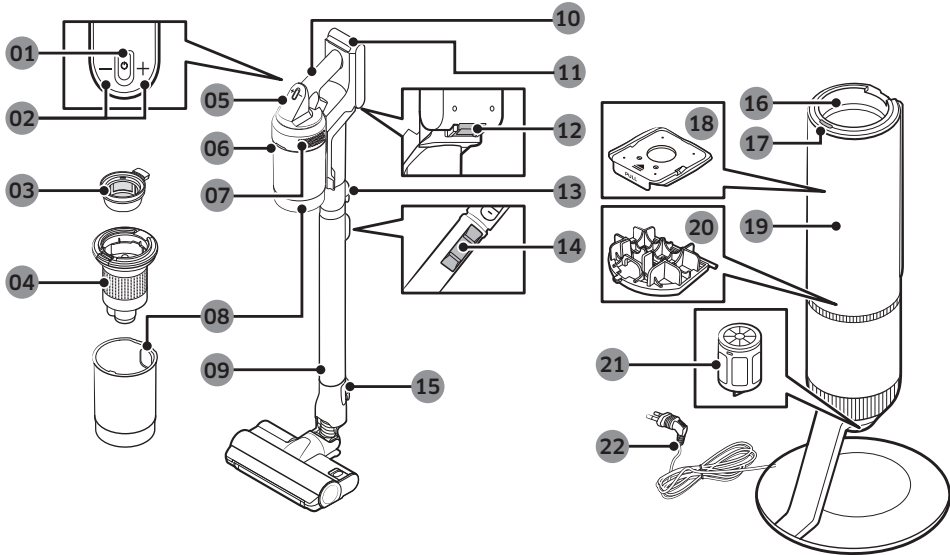
WARNING

- Before removing foreign matter inside the product, turn off the product first.
 - If the product is on while you are removing the foreign matter, you can hurt yourself or damage the product.
- When cleaning the exterior of the product, turn off the product first and then wipe it with a dry towel. Do not spray water directly onto the product or wipe it with volatile materials such as benzene, thinner, or alcohol.
 - If water gets into the product and an error occurs, turn off the product and contact a Samsung service center.
- Before cleaning the Clean Station, unplug the product.
- When cleaning the washable parts, do not use alkaline detergent, acid, industrial detergent, air freshener, acetic acid, etc.
 - Product damage such as plastic breakage, deformation, discoloration, printing deterioration, etc. may occur.

Washable Parts		Dustbin, Washable Micro Filter, Fine Dust Filter, Metal Mesh Grille Filter, dry cloth
Acceptable detergent	Neutral	Dish washing detergent
Prohibited detergent	Alkaline	Lox, mold cleaner, etc.
	Acid	Paraffin oil, an emulsifier, etc.
	Industrial cleaners	NV-I, PB-I, Opti, alcohol, acetone, benzene, thinner, etc.
	Air freshener	Jet spray air fresheners (coffee flavor, herb, etc.)
	Oils	Animal oils, vegetable oils
	Etc.	Edible acetic acid, vinegar, glacial acetic acid, etc.

Parts overview

DESCRIPTION



- | | |
|---------------------------------|------------------------------------|
| 01 Power(⏻) button | 12 Battery release button |
| 02 Suction power control button | 13 Pipe release button |
| 03 Washable Micro Filter | 14 Pipe length adjustment button |
| 04 Metal Mesh Grille Filter | 15 Brush release button |
| 05 Display | 16 Dustbin joint |
| 06 Dustbin release button | 17 Clean Station START/STOP Button |
| 07 Fine Dust Filter | 18 Dust bag |
| 08 Dustbin | 19 Clean Station front cover |
| 09 Adjustable pipe | 20 Clean Station Premotor Filter |
| 10 Handle | 21 Clean Station Fine Dust Filter |
| 11 Battery level indicator | 22 Power cord |

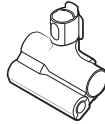
* The wave pattern on the exterior of the product is a natural appearance due to the use of pearl plastic materials and its pearl distribution. In addition, the shining pearl used in the material gives an excellent gloss coating, no extra coating necessary.

Accessories

The accessories with the '*' mark may differ depending on the models.



Adjustable pipe



Pet Tool



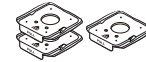
Combination Tool



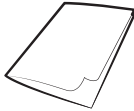
Extension Crevice Tool



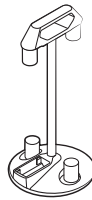
Flexible Tool



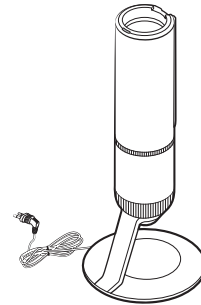
Dust bag: 3 units
(Inside the unit: 1, Spare: 2)



User manual



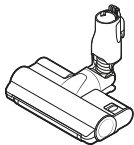
Accessory Cradle



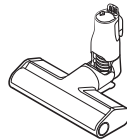
Clean Station



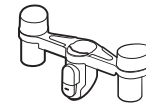
*Charger



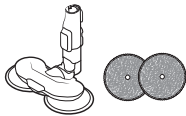
*Jet Dual Brush



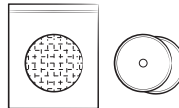
*Slim Action Brush



*Accessory Cradle Holder



*Wet Brush/
Multi-use wet pad



*Single-use wet pad/
Attachable pad



*Battery
(VS20A959***: 2 units)

* Optional

* VS20A958*** model: The additional battery and charger can be purchased separately.

* The Wet Brush includes a multi-use wet pad and a single-use wet pad.

* The Wet Brush and Jet Dual Brush are only compatible with VS20A95**** model.

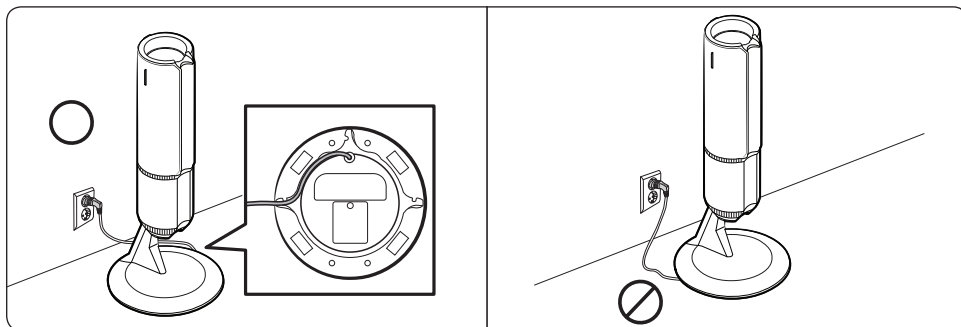
DESCRIPTION

Clean Station

* For detailed information,
please refer to the QR code.

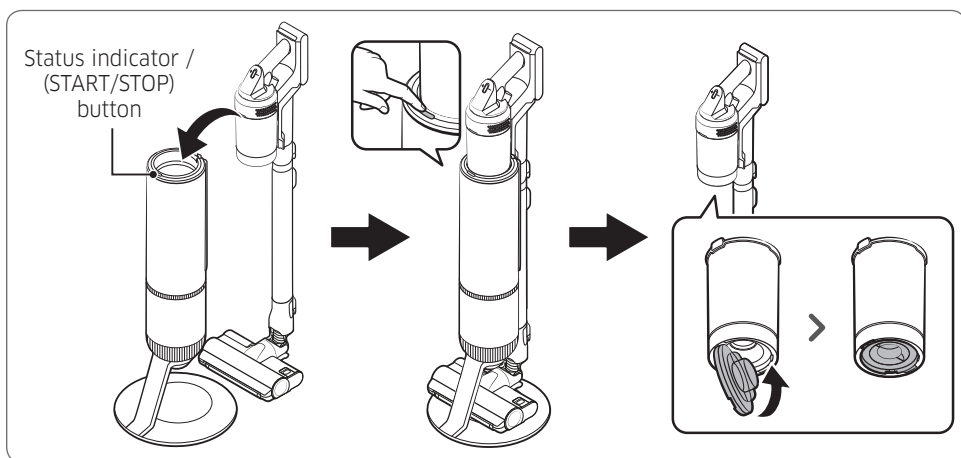


Installing the Clean Station



- 1 Run the power cord of the Clean Station along the round groove at the bottom.
 - Make sure the power cord is correctly placed so that the Clean Station stands without tilting.
- 2 Before plugging in the Clean Station, arrange the power cord neatly.
- 3 When plugging in the Clean Station, the status indicator turns blue for 5 seconds and goes off.

Using the Clean Station



- After inserting the vacuum cleaner into the Clean Station, press the START/STOP button to empty the Dustbin.
 - Press the START/STOP button again to stop its operation.
- Close the bottom cover of the Dustbin before using the vacuum as the bottom cover is open after emptying Dustbin at the Clean Station.

Vacuum cleaner

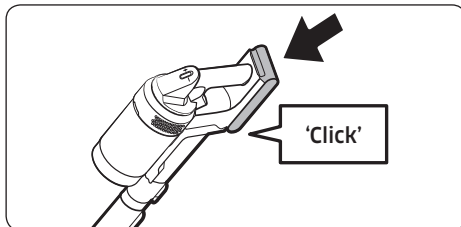
Charging the battery

- * When the battery level indicator turns red or the [Low battery] message appears on the display, charge the battery.
- * You cannot use the vacuum cleaner while charging.
- * Make sure the back of the battery is correctly placed onto the vacuum charging part.
- * Check that the battery level indicator is displayed while charging.
- * When charging starts, the battery level indicator turns on (red, orange, or yellow depending on charging progress), it rises gradually, and changes to green when the charging is complete.

⚠ CAUTION

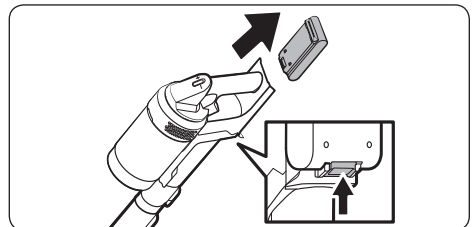
- Before ejecting the battery, the vacuum must be turned off.
 - If the battery is forcibly ejected while the vacuum is operating, the vacuum may malfunction.
- Be careful not to drop the battery. If you do, you can injure yourself or damage the battery.

Inserting the battery

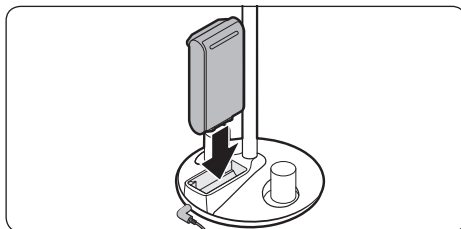


Push the battery to the end until you hear it click.

Ejecting the battery



Press the battery release button at the rear of the handle to eject the battery.

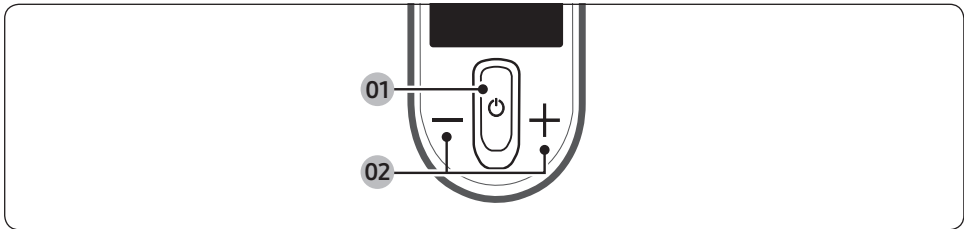


Charging the additional battery

- Charge the additional battery at the additional battery charging slot at the bottom of the Accessory Cradle.
 - Push the battery in firmly.
- * VS20A958*** model: To charge the battery at the Accessory Cradle, a charger needs to be purchased separately. (VCA-SAPA95)

Using the vacuum cleaner

Control Part



* Before using the product, you have to select a language for the first time. Use (+) or (-) button to select a language and hold the (+) button for 3 seconds to complete the setting.

- Press and hold the (+) button for 3 seconds while using the vacuum to enter the language setting mode later.

* To set the Energy Saving mode, press and hold the (+) button for 5 seconds while the vacuum is on the Clean Station.

- To cancel the Energy Saving mode, press and hold the (+) button for 5 seconds.
- The Energy Saving mode is automatically exited if the vacuum is used.

01 Power (⏻) on / off: Press the (⏻) button to start cleaning in [MID] mode.

- When the Wet Brush is assembled, the vacuum starts cleaning in the Wet Brush mode.

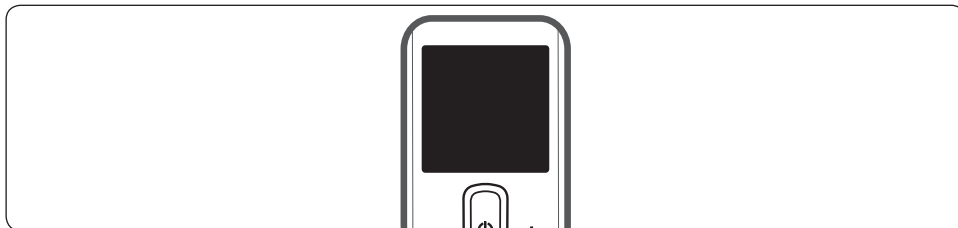
02 Suction power mode control part: You can change the suction power mode.

- You can change the 4 steps [MIN, MID, MAX, JET] of the suction power with the (+) and (-) button.

NOTE

- When the vacuum is in the Wet Brush mode, only the (+) button works.
- While using the Wet Brush, the language setting is not supported.
- If the brush clings to the floor or does not turn properly depending on the floor material (a carpet, a mat, bedding, etc.), adjust the suction power mode to [MIN] or [MID].

Display Part

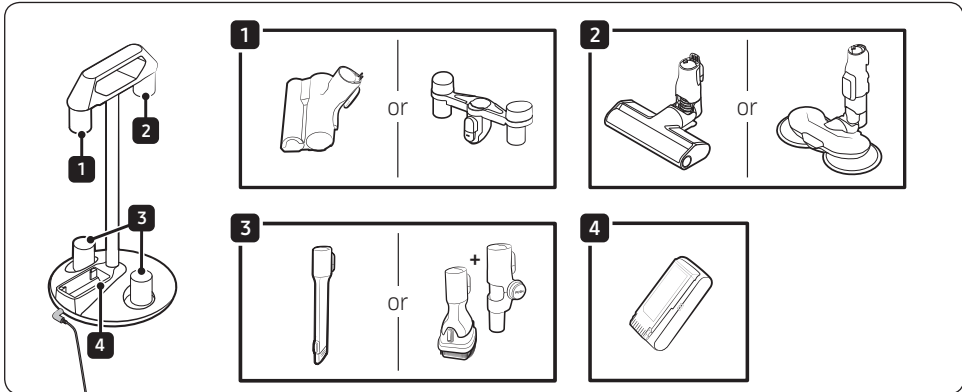


- Suction power mode
 - Displays the suction power mode you have selected as [MIN], [MID], [MAX] or [JET].
- [WET]: Wet Brush mode
 - When the Wet Brush is assembled, the Wet Brush mode is displayed.
 - Press the (+) button to spray water. While holding the (+) button, water is sprayed for a maximum of 2 seconds.
- Check messages

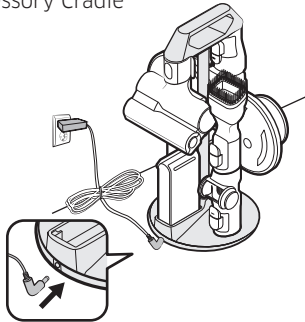
Display	Explanation
Low battery	Displays when battery is low.
Object stuck in brush/tool	Error displays when something is caught in the brush or tool.
Filter not inserted	Error displays when 'Micro Filter' is missing.
Clogged	Error displays when the vacuum cleaner is clogged.
Check brush, tool, or filter	Alerts the user to check the brush, tool, or filter in order to solve the clogging error.
Clean Micro filter	Alerts and recommends the user to regularly check and wash the Micro Filter. (Refer to the 'Cleaning the vacuum cleaner' section.)
Energy Saving on	Displays when the Energy Saving Mode is on.
Energy Saving off	Displays when the Energy Saving Mode is off.

Using the Accessory Cradle

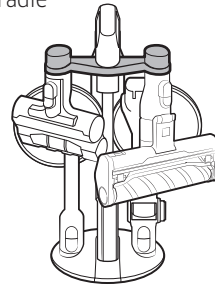
Before charging the additional battery, plug in the charger.



* Accessory Cradle

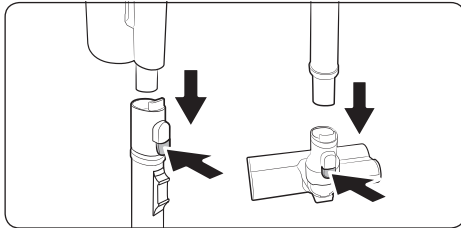


* Accessory Cradle +
Accessory Cradle
Holder



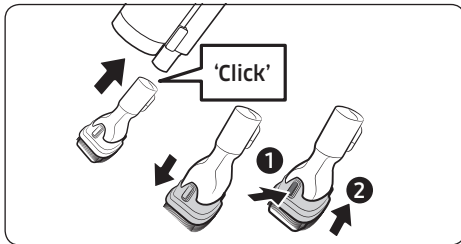
- When accessories are detached to be stored, dust may fall from the suction part of the vacuum cleaner.
 - After cleaning, shorten the pipe length and operate the vacuum in [MAX] mode for 10 seconds.
 - If the pad is wet and stored with the Wet Brush, the wall near the wet pad can be contaminated or begin to smell. After cleaning the pad, dry the pad completely.
 - When detaching the brush, press the release button on the brush.

Using the accessories



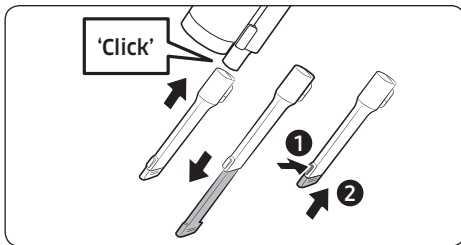
Detaching the accessories

- When detaching the adjustable pipe or the brush, press the release button on the back.
- Before detaching the accessories, operate in [MAX] mode for more than 10 seconds to remove foreign matter remaining in the accessories.



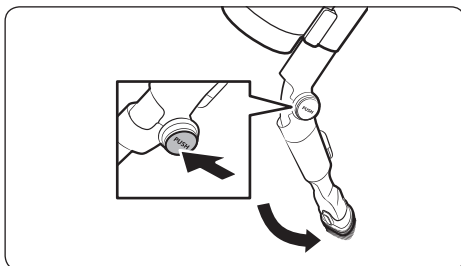
Combination Tool

Use to remove dust from curtains, furniture, sofas, etc.



Extension Crevice Tool

Use to remove dust in grooves of window frames, narrow openings, corners, etc..

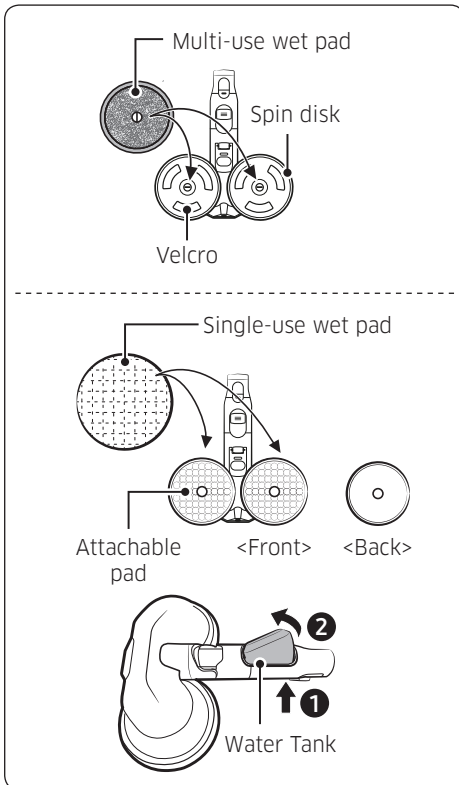


Flexible Tool

Use to clean hard to reach places such as upper or rear parts of furniture or ceilings.

NOTE

- The Flexible Tool can be connected to the Combination Tool and the Extension Crevice Tool.



Wet Brush

Use to clean a floor with a wet pad (wood and linoleum).

※ The Wet Brush does not have a dust suction function.

Using the multi-use wet pad

- When attaching the wet pad, make sure the pad is in the center of the spin disk.

Using the single-use wet pad

- Attach the single-use wet pad to the front side (Velcro side) of the attachable pad on the spin disk.
 - If you use the single-use wet pad without the attachable pad, cleaning performance can be degraded.
- After using the single-use wet pad, discard the pad.

Detaching or attaching the Water Tank

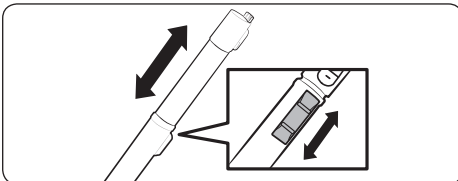
- Press the lower part of the Water Tank to detach.
- When attaching the Water Tank, insert the front end first.

NOTE

- Do not use underground or polluted water.
- When using for the first time, the air in the pump and the tube may cause the Wet Brush to delay spraying water. Press the water spray (+) button repeatedly.

Adjusting the pipe length

Press the button at the rear of the adjustable pipe to adjust the length of the pipe in 3 steps.

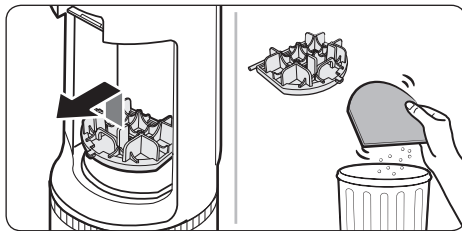
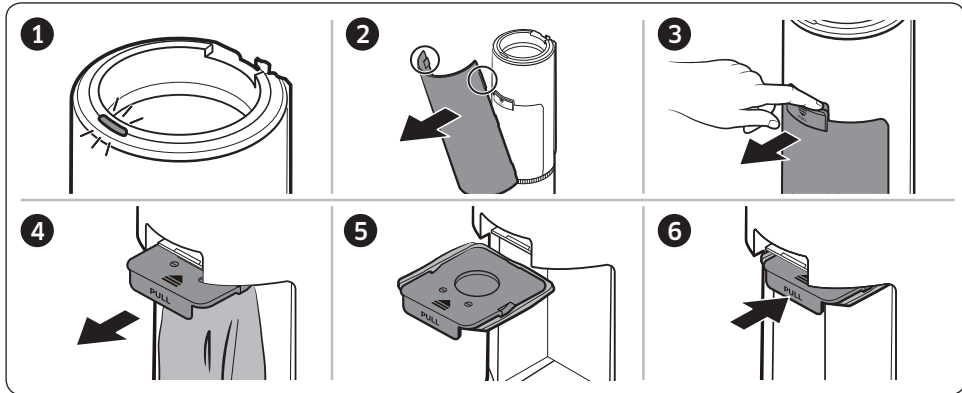


Maintenance

Cleaning the Clean Station

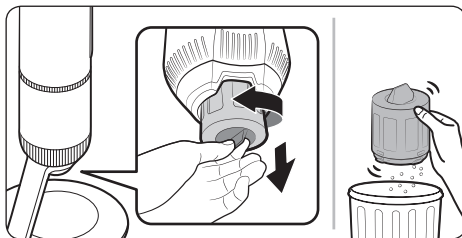
Replacing the dust bag

When the status indicator turns red, you should replace the dust bag.



Cleaning the Premotor Filter

Use the handle to lift the filter off and shake over a bin to remove dust.



Cleaning the Fine Dust Filter

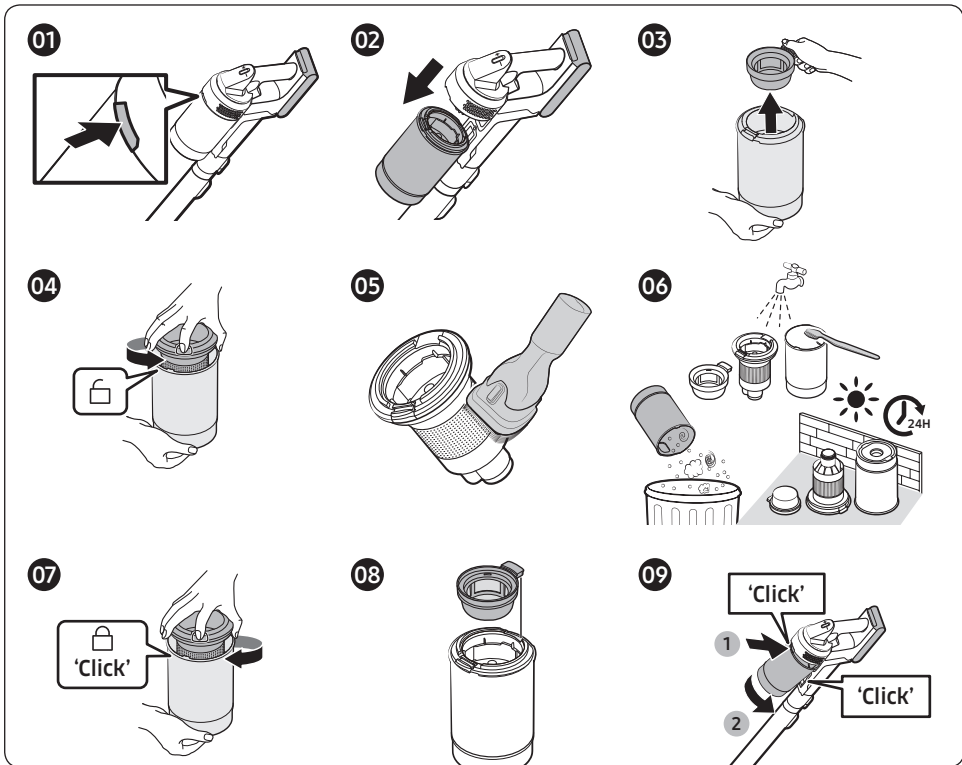
Shake the Fine Dust Filter over a bin to remove dust.



* For detailed information, please refer to the QR code.

Cleaning the vacuum cleaner

Dustbin/Washable Micro Filter

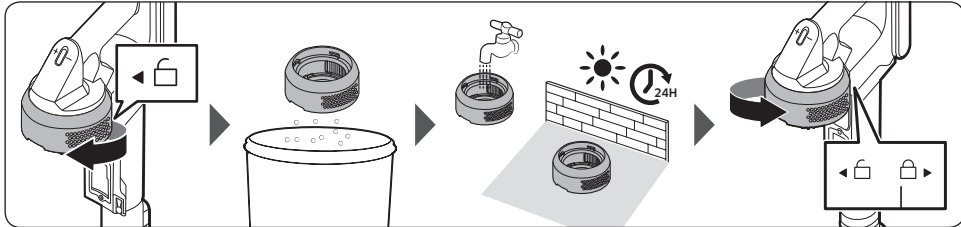


⚠ CAUTION

- After cleaning the Dustbin/Washable Micro Filter with water, you should dry them completely in the shade for more than 24 hours before use.
 - When heat is applied, part deformation may occur.
 - If the filter is not dried completely before being used, it can cause an odor.
- If the Dustbin or the filter is clogged, the vacuum may stop its operation due to the overheating prevention device of the motor.
 - Clean the Dustbin or the filters and then operate the vacuum again.

Fine Dust Filter

Make sure to turn off the product before cleaning the filter.

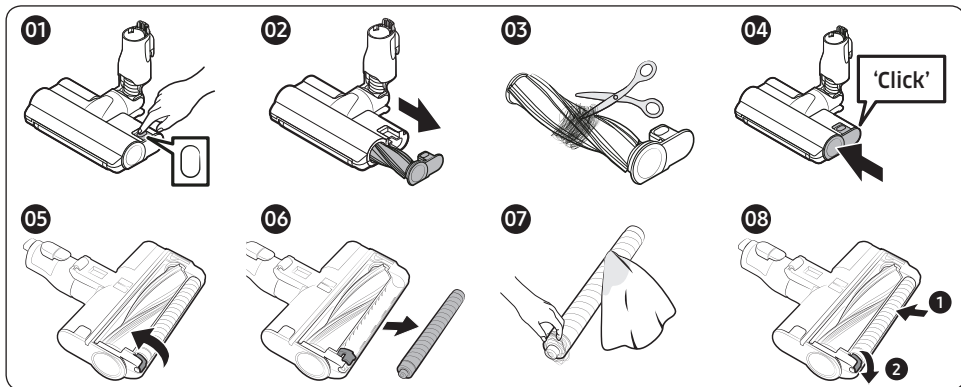


- Twist and pull off the Fine Dust Filter, and tap it gently to remove the dust.
- Wash the filter with running water once a month to maintain the best performance of the filter.
- After cleaning, dry it completely for more than 24 hours in the shade before use.
- For assembly, turn it counterclockwise until the line under the lock image is not visible.

NOTE

- Do not use detergent or tool when washing the filter.
- Do not dry with heat.

Jet Dual Brush

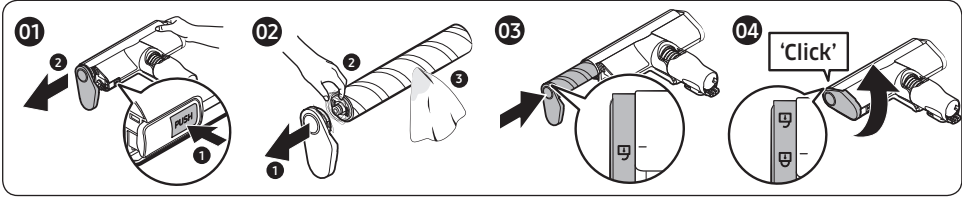


If the foreign matter is not removed, use scissors to remove it.

CAUTION

- If a cloth or other foreign matter is vacuumed up and tangled with the spin brush, the spin brush will stop working to protect the brush motor. After cleaning the brush, turn the power off and then on again.
- If a brush does not work after cleaning, turn the power off and then on again.
- When cleaning the brush, be careful not to catch your fingers in the fold of the brush.

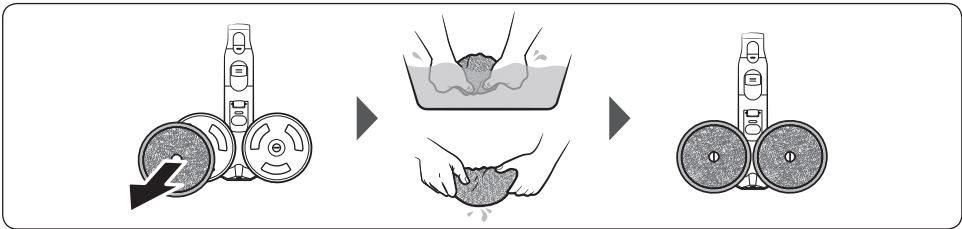
Slim Action Brush



⚠ CAUTION

- Do not clean the brush with water.
- When foreign matter remains on the brush, remove it with a wet tissue or a dry cloth.

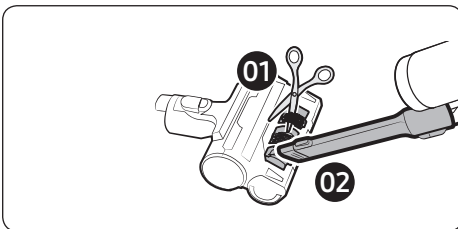
Wet Brush



📖 NOTE

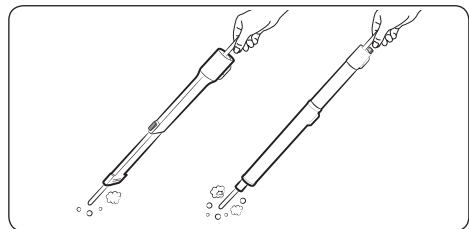
- If the spin brush does not work even after cleaning the (Slim Action Brush) and the (Wet Brush), the overheating prevention device of the motor might be in operation. Wait 30 minutes or more to cool the motor and operate again.

Pet Tool



Remove the pet's hair using scissors and suction the pieces.

Extension Crevice Tool / Pipe



Insert a long thin stick and rotate several times to clean the Extension Crevice Tool or the pipe.

Notes and cautions

Installation

CAUTION

- Do not install the product near water, in an area with excessive moisture, or near window, etc.
- Do not place the Clean Station in a place where people pass by frequently, in entrance way or narrow passage.
 - People may trip over it and be injured, or product damage may occur.
- If the Clean Station is installed incorrectly, it may fall over, which could cause an injury and severe product damage.
- Install the Clean Station in a place where there are no objects that could break and cause damage.

Battery usage

NOTE

- If the product does not work after you charge the battery, replace the battery. If it still does not work with the new battery, contact a Samsung service center.
- For the battery and adaptor, you need to purchase them separately.
- When you purchase a battery in a Samsung service center, check for the genuine Samsung logo on the battery (**SAMSUNG**) and the battery name (VCA-SBTA95).

CAUTION

- Do not disassemble the battery or the Clean Station.
- Do not apply heat to the battery and do not put the battery in a fire.
- As the battery is manufactured only for this product, do not use the battery for other electronic appliances or other purposes.
- Removing the battery during operation may cause product malfunction.
- Battery usage time may shorten with increased battery use. When the battery no longer charges or runs down quickly, replace the exhausted battery with a new one.
- Use only the Clean Station and batteries provided by the manufacturer.

-
- Before inserting the battery, confirm that the battery is being inserted in the correct direction.
 - When discarding a dead battery, put it into a battery collection box for recycling.
 - Do not drop or strike the battery or subject it to a sudden shock.
 - To protect the motor and the battery, the product may not operate when the temperature is lower than 5 °C or higher than 45 °C.

Operation

NOTE

- If excessive force is applied to a brush or foreign matter is caught in the spin brush (drum), the brush may stop working to protect the motor or the product. Turn the vacuum off, remove the foreign matter, and then turn the vacuum on.
- Static electricity may occur depending on the humidity, temperature, or floor material, etc. in your home.
- Please charge the battery before using a newly purchased battery for the first time or if you have not used the battery for a long time.
- If you are not going to use the vacuum for a long period of time or you are going to be away from home for a long period of time, unplug the Clean Station, and then detach the battery from the Clean Station. When the battery is not being charged, it will slowly discharge.
- When the battery level is low, recharge it. If the level of the battery remains low for a long period of time, it can cause the performance of the battery to degrade.
- Clean the multi-use wet pad of the Wet Brush in a normal washing machine by using a neutral detergent.
 - However, If the wet pad is exposed to heat, softener, etc, it may be modified or discolored and product performance can be degraded. Do not boil the wet pad.
- Use a genuine wet pad of Samsung Electronics for the Wet Brush.

-
- If the Wet Brush is used without a wet pad, any product malfunction will not be covered by warranty and a service fee will be charged.
 - When you purchase an additional multi-use wet pad for the Wet Brush, contact a Samsung service center.
 - When you purchase an additional single-use wet pad, check the model name VCA-SPA95.
 - If you want to purchase an additional dust bag, check the model name (VCA-ADB952) and Samsung logo (**SAMSUNG**) first, then contact your nearest Samsung Electronics retailer or Samsung service center.
 - When the dust bag in the Clean Station is filled with dust, the Clean Station may stop due to the overheating prevention device of the motor. Replace the dust bag and operate again.
 - If there is a larva in the suctioned dust, it can multiply in the dust bag. Clean the Clean Station with a wet tissue and replace the dust bag.
 - Do not push the Clean Station so it falls over.
 - Personal injury, product and floor damage may occur.

 **CAUTION**

- Do not use the product near combustible material.
Also do not use:
 - In a place where a burning candle or a desk lamp is placed on the floor.
 - In a place where there are unextinguished embers in an unattended fireplace.
 - In a place where there are combustible materials such as gasoline, alcohol, thinner, ashtrays with unextinguished cigarettes, etc.
- Do not leave the product leaning against a wall or a table.
 - The product may fall and an injury and severe product damage may occur.
- While using or after using the vacuum cleaner, you should lay the vacuum cleaner down or place on the Clean Station to store.
 - The product may fall and an injury and severe product damage occur. In addition, you may not be compensated for the damage.

-
- Do not use the vacuum cleaner for other than its intended purpose. (Do not allow children to ride on or play with the product.)
 - An injury or product damage may occur.
 - Do not allow children to touch the product while cleaning.
 - When the vacuum overheats, children may be burnt.
 - Do not allow children to cling to or push the Clean Station.
 - Personal injury, product and floor damage may occur.
 - Use both hands to carry the Clean Station.
 - When you pull the power cord out of the groove at the bottom of the Clean Station, do not pull it hard. Turn the cord gently on its side so that it can come out smoothly.
 - The power cord may get damaged and could cause an electric shock or fire.
 - Before unplugging or plugging in the Clean Station, turn off the vacuum and make sure that the pins of the power plug do not come into contact with your hands.
 - Fire or electric shock may occur.
 - Do not step heavily on the upper part of the Wet Brush while using it.
 - Product damage or floor damage may occur.
 - When assembling the vacuum, be careful not to catch your fingers in the joints.
 - Do not use the vacuum cleaner on objects that can be easily scratched (TV, monitors, etc.).
 - When cleaning, be careful that the side of the brush does not bump into a molding part, a wall, furniture, etc. and cause staining.
 - For a slight stain, remove it with a wet tissue or a cleaner.
 - Do not use water to clean the product when in use.
 - You should use the product in dry places and do not use the product in wet places or on water.
 - Do not use the product in direct sunlight or high heat and do not store the product inside a car.

-
- Do not put hot water, detergent, etc. into the Water Tank of the Wet Brush.
 - Product malfunction or performance degradation may occur.
 - When not using the Wet Brush, empty all the water in the Water Tank.

Maintenance

NOTE

- Sometimes the wheel of a brush can scratch the floor. Before using the vacuum cleaner, check the status of the wheels of the brush.
 - If there is foreign matter on the wheel of the brush which cannot be removed easily, contact a Samsung service center.
- If the inner part of the Wet Brush is clogged with large foreign matter, spinning speed decreases or the spin disk stops.

CAUTION

- Do not push the vacuum cleaner while it is stored in the Clean Station.
 - Personal injury, product and floor damage may occur.
- Storing the product in sunlight for long hours may cause parts of the product to deform or discolor. Therefore, store the product in the shade.
- Do not clean the brush of the vacuum cleaner with water. Cleaning it with water can cause deformation of parts or malfunction.
- If you notice a continuous reduction in suction or the vacuum cleaner overheats abnormally, clean the products and replace filters.
- When the Clean Station smells bad, replace the dust bag or clean the filters.

Troubleshooting

Before calling for service, review the problems and solutions below. Note that you will be charged for any service calls in which no defects were found.

Problems	Solutions
The vacuum cleaner does not work.	<ul style="list-style-type: none"> • Check the battery level and charge the battery. • Check whether the product is turned off, and then press the power button to turn it on. • Check whether the adjustable pipe, the Dustbin or the brush is blocked. • Check that the Washable Micro Filter is inserted correctly. • If the vacuum has not been used for a long time, charge the battery. • If the battery dies, replace the battery.
The spin brush (drum) inside a brush does not work.	<ul style="list-style-type: none"> • When the message [Check Brush] appears on the display, turn off the vacuum and check whether the brush is clogged with foreign matter. If so, remove the foreign matter and restart the vacuum. • When the vacuum cleaner is turned on, turn it off and on again. <ul style="list-style-type: none"> - For the (Slim Action Brush) and (Wet Brush), if the overheating prevention device of the brush motor operates, it may take about 30 minutes to cool the motor.
An odor emits from the air outlet or the filter of the product.	<ul style="list-style-type: none"> • Empty the Dustbin and clean the filters frequently. <ul style="list-style-type: none"> - As your vacuum cleaner is a new product, it may have a slight odor for the first 3 months after purchase. - If you use the vacuum cleaner for a long period of time, accumulated dirt in the Dustbin or dust on the filter may generate an odor. • Replacement filters are available at your local Samsung service agent.
Static electricity occurs when cleaning a thick and soft mat.	<ul style="list-style-type: none"> • Materials of a mat (childcare center mat, noise prevention mat for between floors, etc.) may cause the static electricity. <ul style="list-style-type: none"> - Move the brush on a normal floor for a while and clean again, then the static electricity should disappear.
The Wet Brush does not spray water.	<ul style="list-style-type: none"> • When using for the first time, the air in the internal pump of the Wet Brush and the tube may cause the Wet Brush to delay spraying water. <ul style="list-style-type: none"> - Detach the Water Tank, press the water spray (+) button, and check that the pump operates with a sound. - Fill the Water Tank, attach it to the Wet Brush, and press the water spray (+) button repeatedly.
The vacuum cleaner cannot be charged.	<ul style="list-style-type: none"> • Confirm that the voltage provided to the Clean Station matches the requirements of the Clean Station. • Check that the vacuum cleaner is turned on, and then check that the LED of the battery level indicator is turned on. • Check if foreign matter (dust) is on the charging terminal. Remove any foreign matter with a cotton swab or soft cloth.

Problems	Solutions
Vacuum cleaner stops operation during cleaning.	<ul style="list-style-type: none"> • As this product has the overheating prevention device of the motor, product will stop operation temporarily for the following conditions. After correcting the cause of the problem, turn the product on again. (This case may differ depending on the ambient temperature.) <ul style="list-style-type: none"> - When the vacuum operates with a full Dustbin. - When the vacuum operates with a brush clogged. - When the Extension Crevice Tool is used for long hours.
Suction force decreases suddenly and the vacuum makes a vibrating sound.	<ul style="list-style-type: none"> • Check whether the brush, the Dustbin or the adjustable pipe is clogged with foreign matter and remove it. • Check whether the Dustbin is fully filled with dust. If it is, empty the bin. • Check whether the filter is dirty. If it is, clean the filter.
Cleaning is finished but small dust particles come out of the brush.	<ul style="list-style-type: none"> • After cleaning, operate the vacuum for 10 seconds or more to suction up the small dust particles.

SAMSUNG

If you have any questions or comments relating to Samsung products, please contact the SAMSUNG customer care center.

Country / Location	Customer Care Center	Web Site
AUSTRALIA	1300 362 603 (Other) 1300 425 299 (HHP)	www.samsung.com/au/support
HONG KONG	3698 4698 (All Product) 3698 4688 (B2B) 2121 9088 (Samsung pay)	www.samsung.com/hk/support (Chinese) www.samsung.com/hk_en/support (English)
MALAYSIA	1800-22-8899 (HHP) 1800-88-9999 (OTH) +603-7713 7420 (Overseas contact)	www.samsung.com/my/support
SINGAPORE	1800 7267864 / 1800-SAMSUNG (Other) 1800 4252997 / 1800-GALAXYS (HHP)	www.samsung.com/sg/support
SOUTH AFRICA	0860 SAMSUNG (726 7864)	www.samsung.com/za/support
PHILIPPINES	1-800-10-726-7864 (PLDT) 1-800-8-726-7864 (Globe) 02-8-422-2111 (Landline)	www.samsung.com/ph/support
INDIA	1800 5 SAMSUNG (1800 5 7267864) (Toll-Free) 1800 40 SAMSUNG (1800 40 7267864) (Toll-Free)	www.samsung.com/in/support

This product is RoHS compliant



DJ68-00859G-00