

AURZEN



CastPlay Pro

Wireless USB-C
Dongle

USER MANUAL

WHAT'S INCLUDED



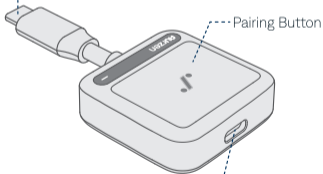
Wireless USB-C Dongle x 1



User Manual x 1

PRODUCT OVERVIEW

USB-C Connector



USB-C Power Input Port

Item	Description
Pairing Button	<ul style="list-style-type: none"> • Long press to enter pairing status • Press once to start/pause casting
USB-C Connector	Connect to the casting device (e.g. laptop, mobile phone, tablet)
USB-C Power Input Port	Support pass-through charging for mobile devices

INDICATOR LIGHT STATUS



Indicator Light Status	Wireless USB-C Dongle Status
Flashing	Pairing
Solid	Pairing successful

CASTING

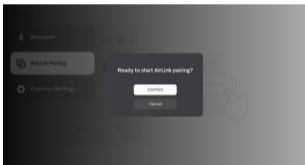
- 1 Turn on your ZIP projector.
- 2 Plug the Wireless USB-C Dongle into a USB-C port on your casting device, such as laptop, mobile phone, tablet, handheld gaming console.



Note:

- (1) Make sure your device supports video output and power delivery via the USB-C port (USB-C DP Alt Mode).
- (2) Google Pixel Phone 8, 9, and 10 series support DP Alt Mode, while the previous series do not support this mode.
- (3) Switch and Switch OLED support DP Alt Mode, but an external power supply is required to enter TV mode. Switch Lite does not support DP Alt Mode. Switch 2 is not yet compatible with this Wireless USB-C Dongle.

- Press and hold the **Pairing Button** for 5 seconds on the Wireless USB-C Dongle and the indicator light will flash to indicate that the Wireless USB-C Dongle is ready for pairing.
- On the ZIP projector's **Homepage**, open the side menu by pressing the **OK** button on the project, select **AirLink** and **Confirm** when prompted.



- Wait for the successful pairing prompt. The content from your device will appear on the projector surface.

Tips:

- * To pause screen mirroring, press the **Pairing Button** once. Press it again to resume.
- * The above pairing process is only required for the first time. After that, plug the Wireless USB-C Dongle and press the **Pairing Button** once to start casting immediately.

- * The USB-C power input port supports pass-through charging for mobile devices, with a maximum of 60W PD.

TROUBLESHOOTING

1 Overheating during operation

- * When in use, make sure there is at least 0.4 inches (1 cm) of clearance around the ventilation openings.
- * During operation, the maximum temperature of the wireless USB-C dongle will not exceed 122°F (50°C), so you can use it with confidence.

2 Casting support

- * Genuine HDCP (High-bandwidth Digital Content Protection) for DRM (Digital Rights Management) streaming is supported.
- * Duplicate and Extend mode for Windows/macOS systems are supported.



Hereby, [Shenzhen Neutop Optoelectronics Co., Ltd.] declares that this radio equipment is in compliance with Directive 2014/53/EU. The full text of the EU declaration of conformity is available at the following internet address:

<https://aurzen.com/pages/declaration>

The below radio frequency specification only apply to EU and UK regions:

	Frequency Range	Transmit Power (EIRP)
Wi-Fi 5G	5150-5250MHz	<23dBm
	5725-5850MHz	<14dBm

Note: This device is restricted to indoor use when operating in the 5150 to 5350 MHz frequency range.

Specific Absorption Rate information:

This product meets the applicable national or international RF exposure guidance (SAR guideline) when used normally against your head or, when worn or carried, at a distance of 5 mm from the body. The SAR guideline includes a considerable safety margin designed to assure the safety of all persons, regardless of age and Health. Your device meets international guidelines for exposure to radio waves. The highest SAR values under the ICNIRP guidelines for your device model are listed below:

1.6 W/kg



All products bearing this symbol are waste electrical and electronic equipment (WEEE as in directive 2012/19/EU) which should not be mixed with unsorted household waste. Instead, you should protect human health and the environment by handing over your waste equipment to a designated collection point for the recycling of waste electrical and electronic equipment, appointed by the government or local authorities. Correct disposal and recycling will help prevent potential negative consequences to the environment and human health. Please contact the installer or local authorities for more information about the location as well as terms and conditions of such collection points.

FCC compliance statement:

This device complies with part 15 of the FCC Rules. Operation is subject to the following two conditions: (1) This device may not cause harmful interference, and (2) this device must accept any interference received, including interference that may cause undesired operation.

Note: This equipment has been tested and found to comply with the limits for a Class B digital device, pursuant to part 15 of the FCC rules. These limits are designed to provide reasonable protection against harmful interference in a residential installation. This equipment generates, uses and can radiate radio frequency energy and, if not installed and used in accordance with the instructions, may cause harmful interference to radio communications. However, there is no guarantee that interference will not occur in a particular installation.

If this equipment does cause harmful interference to radio or television reception, which can be determined by turning the equipment off and on, the user is encouraged to try to correct the interference by one or more of the following measures:

- Reorient or relocate the receiving antenna.
- Increase the separation between the equipment and receiver.
- Connect the equipment into an outlet on a circuit different from that to which the receiver is connected.
- Consult the dealer or an experienced radio/TV technician for help.

Important: You are cautioned that changes or modifications not expressly approved by the party responsible for compliance could void the user's authority to operate the equipment.

RF Exposure Information:

The portable device is designed to meet the requirements for exposure to radio waves established by FCC. These requirements set a SAR limit of 1.6 W/kg averaged over one gram of tissue. The highest SAR value reported under this standard during product certification for use when properly worn on the body.

Canada compliance statement / Conformité réglementaire canadienne:

This device complies with Innovation, Science and Economic Development Canada license-exempt RSS standard(s).

Operation is subject to the following two conditions:

(1) this device may not cause interference, and (2) this device must accept any interference, including interference that may cause undesired operation of the device.

Operation in the band 5150–5250 MHz is only for indoor use to reduce the potential for harmful interference to co-channel mobile satellite systems.

Exposure to radio frequency energy:

The portable device is designed to meet the requirements for exposure to radio waves established by ISED. These requirements set a SAR limit of 1.6 W/kg averaged over one gram of tissue. The highest SAR value reported under this standard during product certification for use when properly worn on the body.

Le présent appareil est conforme aux CNR d'Innovation, Sciences et Développement économique Canada applicables aux appareils radio exempts de licence. L'exploitation est autorisée aux deux conditions suivantes : (1) l'appareil ne doit pas produire de brouillage, et (2) l'utilisateur de l'appareil doit accepter tout brouillage radioélectrique subi, même si le brouillage est susceptible d'en compromettre le fonctionnement.

La bande 5150–5250 MHz est réservée uniquement pour une utilisation à l'intérieur afin de réduire les risques de brouillage préjudiciable aux systèmes de satellites mobiles utilisant les mêmes canaux.

L'exposition à l'énergie radiofréquence:

Le dispositif portatif est conçu pour répondre aux exigences d'exposition aux ondes radio établie par le développement énergétique DURABLE. Ces exigences un SAR limite de 1,6 W/kg en moyenne pour un gramme de tissu. La valeur SAR la plus élevée signalée en vertu de cette norme lors de la certification de produit à utiliser lorsqu'il est correctement porté sur le corps.



UK

REP

JunBright Ltd

Add: 51 Chalton Street London, England, NW1 1HY

E-mail: junbrigh2024@gmail.com

EU REP & Importer:

Neue Gipfel GmbH

Address: Kronstadter Str.4, 81677 München, Germany

E-mail: NeueGipfel@163.com

CONTACT US



Email

North America/United Kingdom:
support@aurzen.com

Europe: support.eu@aurzen.com

日本: support.jp@aurzen.com



Phone

+1-667-218-4830 (Mon-Fri, 9:00 to
17:00 EST)

*If you need assistance outside these hours,
please email us for assistance.