

Installation & Operation Guide



Digital Deadbolt

Model DDBKP

Read this manual carefully before installing and operating!

INSTALLATION INSTRUCTIONS

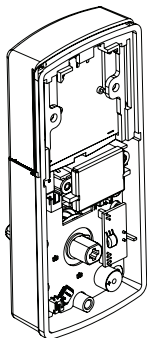
| | |
|--|----------|
| Package Contents / Tools Required..... | Page 1 |
| Prepare Door and Jamb..... | Page 2 |
| Adjusting Deadbolt Latch Set..... | Page 3 |
| Installing Deadbolt Latch Set..... | Page 4 |
| Installing Exterior Assembly..... | Page 5 |
| Installing Interior Assembly..... | Page 6-8 |

OPERATION INSTRUCTIONS

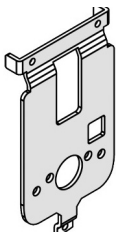
| | |
|---|---------------|
| Digital Keypad Overview..... | Page 9 |
| Locking and Unlocking / Changing Programming Code / Adding User Codes..... | Page 10 |
| Deleting User Codes / Automatic Lock Function / Sound On and Off..... | Page 11 |
| Secure Lock-out Period / Restore Factory Settings / Low Battery Warning / Consumer Friendly Message Guide..... | Page 12 |
| Installation Trouble Shooting..... | Page 13 |
| Customer Service..... | Page 14 |
| Template..... | Page 15-16 |
| Programming Record..... | Page 17 |
| Limited Warranty..... | Back Cover |

INSTALLATION INSTRUCTIONS

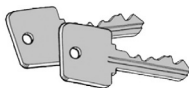
Package Contents



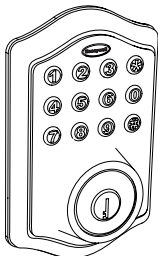
Interior Assembly



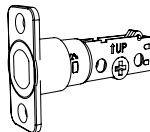
Mounting Plate



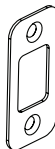
Entry keys (2 ea.)



Exterior Assembly



Deadbolt Latch Set (Adjustable)
2-3/8" (60mm) to 2-3/4" (70mm)



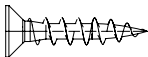
Deadbolt Strike Plate



5/16" (8mm) Screws - 2 ea.



1" (25mm) Screws - 2 ea.



3/4" (19mm) Screws - 5 ea.



1-3/8" (35mm) Screws - 1 ea.

Tools Required

Tools Required for Installation on Pre-drilled Doors:

- Phillips Screwdriver

Tools Required for Installation on Doors That Require Drilling:

- Drill
- Tape Measure
- Pencil
- 2-1/8" (54mm) Drill Hole Saw
- 1" (25mm) Drill
- 1/16" (2mm) Drill
- Chisel
- Hammer
- Phillips Screwdriver

DO NOT RETURN TO STORE! If any parts are missing or damaged, please call Customer Service toll free at 1-877-354-5457 (M-F 7am - 5pm PST)

ADJUSTABLE DEADBOLT LATCH SET

NOTE: Deadbolt Latch Set is shipped with the backset set at 2-3/8" (60mm)

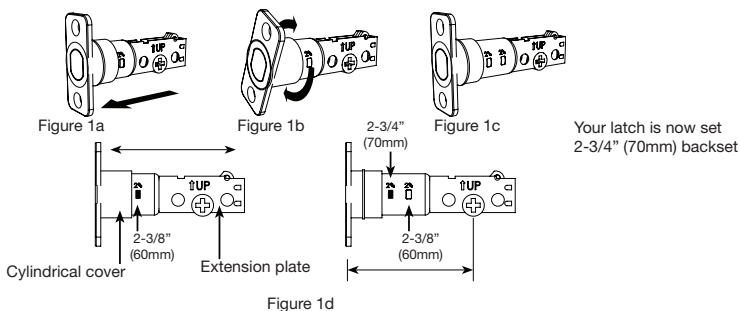
Measure the backset (backset is distance between edge of the door and the center of Lock).

1. TO CONVERT FROM 2-3/8" (60mm) BACKSET TO 2-3/4" (70mm) BACKSET

- Hold latch with numbers facing forward and thumb pressing on the bolt (Figure 1a).
- Rotate the cylinder cover clockwise (Figure 1b).
- Pull and twist the extension plate all the way out (Figure 1c).
- Rotate the cylinder cover counter clockwise so that the marking aligns with the 2-3/4" (70mm) position indicator (Figure 1d).

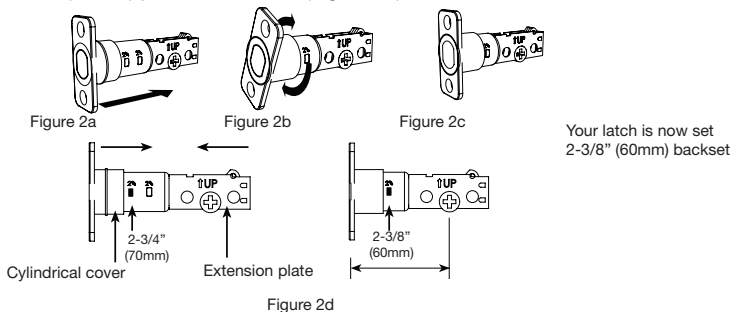


NOTE: Do not extend Cylindrical Cover past 2-3/4" (70mm)



2. TO CONVERT FROM 2-3/4" (70mm) BACKSET TO 2-3/8" (60mm) BACKSET

- Hold latch with numbers facing forward and thumb pressing on the bolt (Figure 2a).
- Rotate the cylinder cover clockwise (Figure 2b).
- Push and twist the extension plate all the way in (Figure 2c).
- Rotate the cylinder cover counter clockwise so that the marking aligns with the 2-3/8" (60mm) position indicator (Figure 2d).



PREPARE DOOR AND JAMB

NOTE: For installation on doors with pre-drilled holes skip to page 4.

1. TEMPLATE

- Cut out template printed on page 15 of this Manual (Figure 1a).
- Fold template and place on door 36" (925mm) from the ground as marked (Figure 1b).



Figure 1a

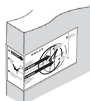


Figure 1b

2. MARK THE DOOR FOR DRILLING

- Mark center hole on door edge through guide on template for 1" (25mm) latch bolt (Figure 2a).
- Mark center hole on door face through guide on template for 2-3/8" (60mm) or 2-3/4" (70mm) backset (Figure 2b).



Figure 2a



Figure 2b

3. DRILL AND CHISEL DOOR

- Drill 2-1/8" (54mm) hole through door face as marked for lock set (Figure 3a).
- Drill 1" (25mm) hole in center of door edge for Deadbolt Latch Assembly (Figure 3b).
- Insert Deadbolt Latch Assembly in hole keeping it parallel to face of door. Mark outline and remove latch (Figure 3c).
- Chisel 1/8" (3mm) deep or until latch face is flush with door edge (Figure 3d).

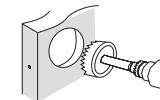


Figure 3a

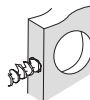


Figure 3b



Figure 3c

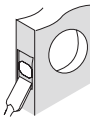


Figure 3d



NOTE: For Drive in Latch, drill hole size indicated on template and press until it is flush with door edge.

4. MARK AND DRILL DOOR JAMB

- Mark center hole on edge of jamb even with the center of the Latch Bolt on door edge. (Figure 4a).
- Drill 1" (25mm) hole 1-3/16" (30mm) deep in door jamb on center mark (Figure 4b).
- Outline outside edges of Strike Plate (Figure 4c).
- Chisel 1/8" (3mm) deep for Strike Plate or until flush (Figure 4d).
- Install Strike Plate using two 3/4" (19mm). screws provided (Figure 4e).

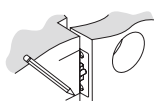


Figure 4a

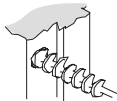


Figure 4b

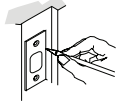


Figure 4c

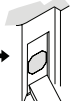


Figure 4d

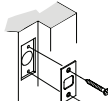
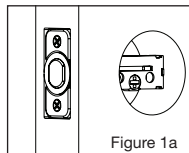


Figure 4e

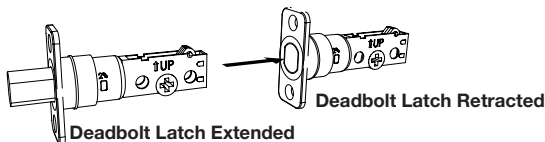
INSTALLING DEADBOLT LATCH SET

1. INSTALLING THE DEADBOLT LATCH SET (need phillips head screwdriver)

- Insert Deadbolt Latch Set into door edge hole with the word "UP" and the arrow on the extension plate facing UP. Cross shaped spindle connector will be at the bottom of the Deadbolt Latch Set (Figure 1a).
- Make sure the face plate sits flush with the door. Do not force the latch into the mortise flush. Chisel out excess material if necessary for a flush fit.
- Using two 3/4" (19mm) screws provided, screw the latch into the door with a hand held screwdriver. DO NOT OVER TIGHTEN.



NOTE: Deadbolt Latch must be retracted when installing



2. IDENTIFYING YOUR DOOR HANDING

Stand outside the door

- If the hinges are on the left your door is Left Handed (Figure 2a).
- If the hinges are on the right your door is Right Handed (Figure 2b).

OUT SWING DOOR

Left Handed Door
Hinges are on the left side

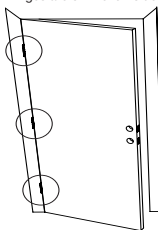
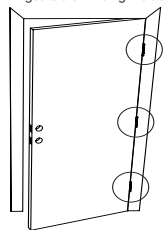


Figure 2a

Right Handed Door
Hinges are on the right side



IN SWING DOOR

Left Handed Door
Hinges are on the left side

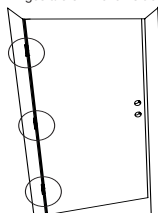
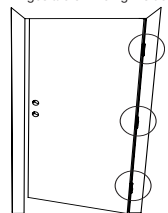


Figure 2b

Right Handed Door
Hinges are on the right side



NOTE: You are standing outside the door

INSTALLING EXTERIOR ASSEMBLY

1. INSTALLING THE EXTERIOR ASSEMBLY

Work with the Door Open for easy access.

- Unpack the Exterior Assembly. Use care to not scratch the green circuit board during handling and installation.
- Check that the Rubber Gasket is properly seated on the Exterior Assembly (Figure 1a).
- Insert the Exterior Assembly onto the door with the tailpiece going through the Deadbolt Latch Set cross shaped spindle connector in the **VERTICAL POSITION**. Route the Control Wire through the door over the Deadbolt Latch Set (Figure 1b).

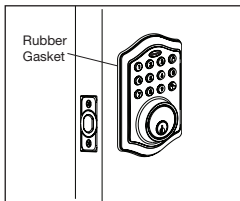


Figure 1a

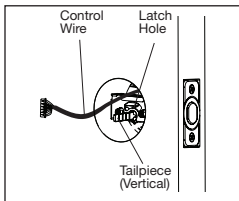


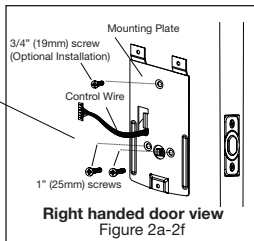
Figure 1b



NOTE: Tailpiece must be positioned vertically

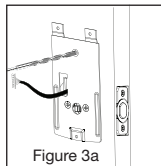
2. SECURING THE EXTERIOR ASSEMBLY TO THE DOOR

- From the side marked “This side against door”, route the Control Wire through the rectangular slot in the Mounting Plate (Figure 2a).
- Place Mounting Plate against door with tailpiece passing through the center hole in the three hole set (Figure 2b).
- Secure the Mounting Plate to the Exterior Assembly using two 1” (25mm) Screws (Figure 2c).
- Hand tighten with a Phillips Screwdriver leaving loosely connected (Figure 2d).
- Check that the Rubber Gasket is properly aligned and correct as necessary (Figure 2e).
- Check vertical alignment of the lock (Figure 2f).
- Tighten securely with a hand held Phillips Screwdriver. **DO NOT OVER TIGHTEN**



3. OPTIONAL INSTALLATION

- Using a 1/16” (2mm) drill bit, drill a pilot hole in your door using the Mounting Plate upper hole as a guide (Figure 3a).
- Insert one 3/4” (19mm) screw and tighten.



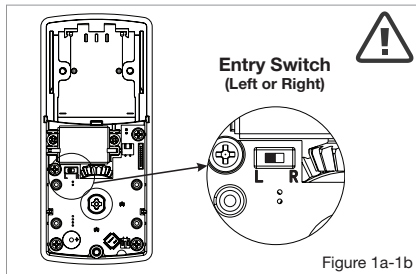
NOTE: Lock and unlock using the key to see if the Deadbolt Latch is opening and closing easily.

INSTALLING INTERIOR ASSEMBLY

Unpack the Interior Assembly. Remove the battery cover by sliding the cover upward. Locate the screws holding the Mounting Plate to the Interior Assembly. Remove the screws to release the Mounting Plate from the Interior Assembly.

1. SET THE ENTRY SWITCH FOR LEFT OR RIGHT HANDED DOOR

- Gently move the switch to "L" for Left Handed Door (Figure 1a).
- Gently move the Switch to "R" for Right Handed Door (Figure 1b).



2. SET THE INTERIOR KNOB POSITION FOR LEFT OR RIGHT HAND HINGED DOORS

- The Interior Knob goes in the Vertical position for Right Handed Doors (Figure 2a).
- The Interior Knob goes in the Horizontal position for Left Handed Doors (Figure 2b).

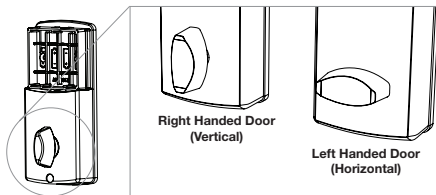
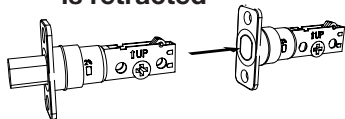


Figure 2a-2b

NOTE: Make sure deadbolt Latch is retracted



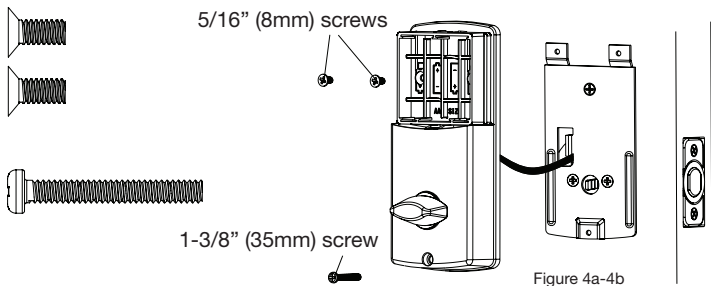
3. ATTACH THE CONTROL WIRE TO THE INTERIOR ASSEMBLY

- Use care to attach the Control Wire male plug to the Interior Assembly female socket connector.
- Do not force the Control Wire male plug into the Interior Assembly female socket connector.
- The Control Wire male plug has two alignment tabs on the smooth side of the plug which is the top of the plug.
- The Control Wire male plug is inserted with the smooth side up into the Interior Assembly female socket connector.

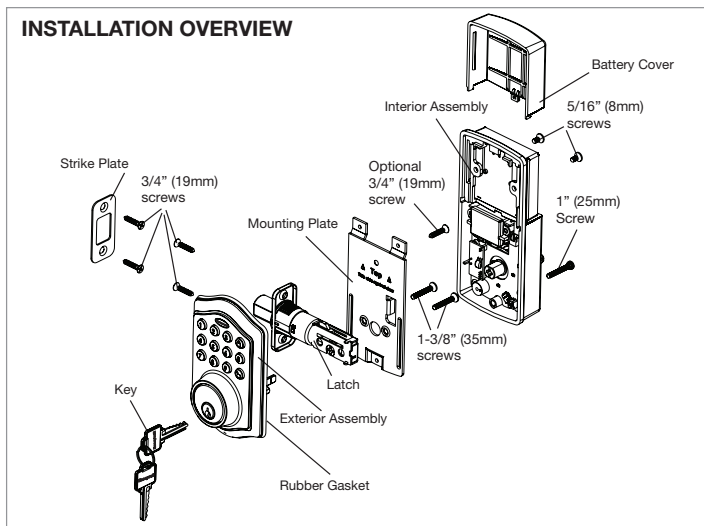
INSTALLING INTERIOR ASSEMBLY (CONT.)

4. ATTACH THE INTERIOR ASSEMBLY TO DOOR

- Position the Interior Assembly over the tailpiece and push the Interior Assembly against the door (Figure 4a).
- Using two 5/16" (8mm) screws and one 1-3/8" (35mm) screw, attach the Interior Assembly to the Mounting Plate. **DO NOT OVER TIGHTEN SCREWS** (Figure 4b).



NOTE: Lock and unlock using Interior Knob to see if the latch is opening and closing easily.



5. Installing Batteries

- Insert 4 AA high quality Alkaline batteries into the Battery Compartment in the direction noted +/- on the Compartment. The Lock will beep 2 times, the key pad will illuminate blue, and the Honeywell button will flash green twice to signify that it has received power (Figure 5a).

NOTE: Do not touch the keypad until the blue light turns off. Do not use rechargeable batteries or non-alkaline batteries.

- Slide the Battery Cover down into the track on the Interior Assembly to cover the batteries (Figure 5b).

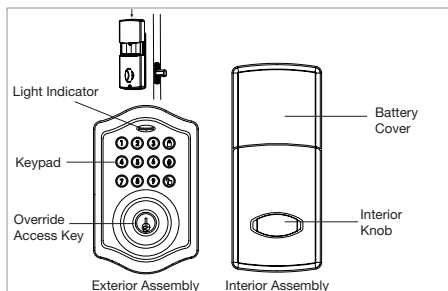




Figure 5a-5b

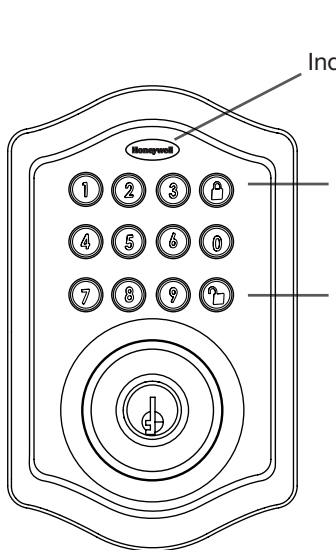
6. Testing Lock

With the Door Open

- Test the Lock using the interior Knob. The bolt should move smoothly.
- Test the lock using the Keypad. To lock press  and then press "1234"  to unlock.

OPERATION INSTRUCTIONS

Exterior Assembly Overview



Green

- Indicates Successful Programming Step
- Indicates Unlocking is Successful

Red

- Indicates Failed Programming Step
- Indicates Locking is Successful



Lock button

Lock - Used to lock door

Clear - Used to clear wrong keypad entries



Unlock button

Unlock - Used to unlock door

Programming - Used in programming steps

Batteries (not included)

Electronic lock requires (4) High Quality AA Alkaline batteries. When all 4 batteries are installed in the correct position, hear 2 beeps and the keypad will illuminate blue. **DO NOT TOUCH** the keypad until the keypad stops illuminating.

Programming Symbols



Lock / Clear



Unlock / Programming



Programming Code



User Code (4-8 digits)



User ID (01-50, 2 digits)

Factory Settings

The lock comes factory preset with a:



Programming code - 123456





User code - 1234



User ID - 01



Please change the Programming

Code  and the User Code 
as soon as possible after installation
to insure security.

Programming Tips

5 Seconds - Complete all the programming steps in the programming mode within 5 seconds.

Clear - Use the  key to clear entries in case a wrong button is pushed.

Deleting User Codes

DELETE ONE EXISTING OR PRESET USER CODE

The unit comes with a factory User ID **ID** = 01 for User Code **UC** = 1234.

IMPORTANT: To delete 1 User Code **UC**, the lock must have more than 1 User Code **UC** in its database.

PC →  → 2 →  → Existing **ID** →  re-enter **ID** → 

Hear 1 beep and Light Indicator illuminates green

DELETE ALL USER CODES

IMPORTANT: this will delete the user codes but not the programming code, enter the following




PC →  → 3 →  → re-enter **PC** → 

Hear 1 beep and Light Indicator illuminates green

Automatic Lock Function

SET OR CANCEL AUTO LOCK

You can set the lock to automatically close after each time the lock is opened. Time value range = 20 - 900 seconds, enter the following:

Set Auto Lock: **PC** →  → 5 →  → Time Value → 

Hear 1 beep and Light Indicator illuminates green

To cancel Auto Lock set the time to 00, enter the following:

Cancel Time Value Auto Lock: **PC** →  → 5 →  → 00 → 

Hear 1 beep and Light Indicator illuminates green

Sound On and Off

You can “mute” or turn the “sound on” on your lock by entering the following. (Factory setting is sound on).

PC →  → 6 →  → 1 or 2 → 

1 = Sound Off
2 = Sound On




Sound Off (1) - Light Indicator illuminates green

Sound On (2) - Hear 1 beep and Light Indicator illuminates green

Secure Lock out Period

Warning sounds and LED flashes red after 4 incorrect code attempts: Keypad shuts down for 30 seconds.

Restore Factory Settings

To reset the lock to the original factory settings including the Programming Code  and all User Codes  remove one battery for 10 seconds. Reinsert the battery and wait for a long and short beep. Press  3 times within 3 seconds. The lock will beep and the light indicator will turn green.

Low Battery Warning

Beeps and LED flashes red for 5 seconds. Please replace with good quality alkaline batteries.

Note: Removing batteries does not erase active Programming or User Codes.

Consumer Friendly Message Guide

| | |
|------------------------------------|--|
| Unlock / Valid programming: | 1 long beep and LED illuminates green |
| Lock: | 2 short beeps and LED illuminates red |
| Invalid Programming: | 2 short beeps and LED flashes red twice |
| Low Voltage: | Beeps for 5 seconds (7/9 times depends on operation is unlock/lock) |
| Super Low Voltage: | 4 short beeps and LED flashes red four times |
| 4 Incorrect code entry attempts: | 2 short beeps and LED illuminates red each attempt |
| Power on: | 1 long beep and 1 short beep and LED illuminates green |
| Chip Reset: | 1 long beep and 1 short beep and LED illuminates green (may occur several times or once in a while) |
| Lock Error: | 3 long beeps LED flashes red three times |
| Repeat operation after Lock Error: | 2 short beeps three times LED flashes red six times |

NOTE: When battery is under low voltage, the lock will give the (Low Battery Warning: Beeps and LED flashes red for 5 seconds). During this time your lock can still work. However once the voltage is lower than 4.3V (called Super-Low Voltage), the operation of the locking and unlocking will not work, user must replace batteries immediately.

| Issue | Solution |
|--|---|
| <p>Latch Working Backwards- Lock unlocks when lock button is pushed or locks when unlock button or code is pushed.</p> | <p>Direction switch is set to incorrect setting. Remove the Interior Assembly and move the switch to the opposite direction.</p> <ul style="list-style-type: none"> • Check that your switch is set in the correct position Left or Right Handed door. <p>If Correct</p> <ul style="list-style-type: none"> • Rotate Turn knob and reinstall Interior Assembly. Retest again while holding Interior Assembly in place. |
| <p>Interior Assembly knob will not turn.</p> | <p>Knob or vertical tailpiece is installed in incorrect position. Remove Interior Assembly and reposition the Interior Knob. With the Deadbolt Latch retracted verify that the tailpiece is vertical.</p> |
| <p>Lock will not function electronically.</p> | <ul style="list-style-type: none"> • Check that all batteries are fresh high quality Alkaline Batteries. • Check for proper polarity (+ -) of all batteries. • Check that the Control Wire is attached to the Interior Assembly. |
| <p>Lock gives error signal when opening or locking and Deadbolt Latch will not extend or retract completely when door is closed.</p> | <p>Unlock door using key or interior knob. While door is open, check that the Deadbolt Latch operates smoothly. Check for proper alignment of the strike plate, adjust as needed to assure there is no binding against the Deadbolt Latch.</p> |
| <p>Deadbolt Latch is sticking.</p> | <p>Installation screws of the lock may be too tight and have to be loosened.</p> <ul style="list-style-type: none"> • Remove Interior Assembly. • Slightly loosen the Mounting Plate screws. • Lock and unlock using the Key. • Reattach Control Wire and Interior Assembly. |

CONSUMER ASSISTANCE

EMAIL: LHLPCustomerService@LHLPinc.com

WEBSITE: www.honeywellsafes.com

ADDRESS: Consumer Assistance Dept.
LH Licensed Products, Inc. 860 East Sandhill Avenue Carson, CA 90746 USA

TELEPHONE: US/Canada 1-877-354-5457 (Toll Free)

Mexico 01-800-288-2872 After English voice recording stops you must then enter 800-860-1677

to complete your call. (Toll Free)

Australia 0011-800-5325-7000 (Toll Free)

Germany/New Zealand 00-800-5325-7000 (Toll Free)

Other Countries XX*-310-323-5722 (Toll Charges Apply)

XX*- Dial U.S. Country Code first

CALL CENTER HOURS: US/Canada 7am – 5pm (PST**) Mon – Fri (Subject to change)

CALL BACK HOURS: Other Countries 7am – 8pm (PST**) Mon – Fri (Subject to change)

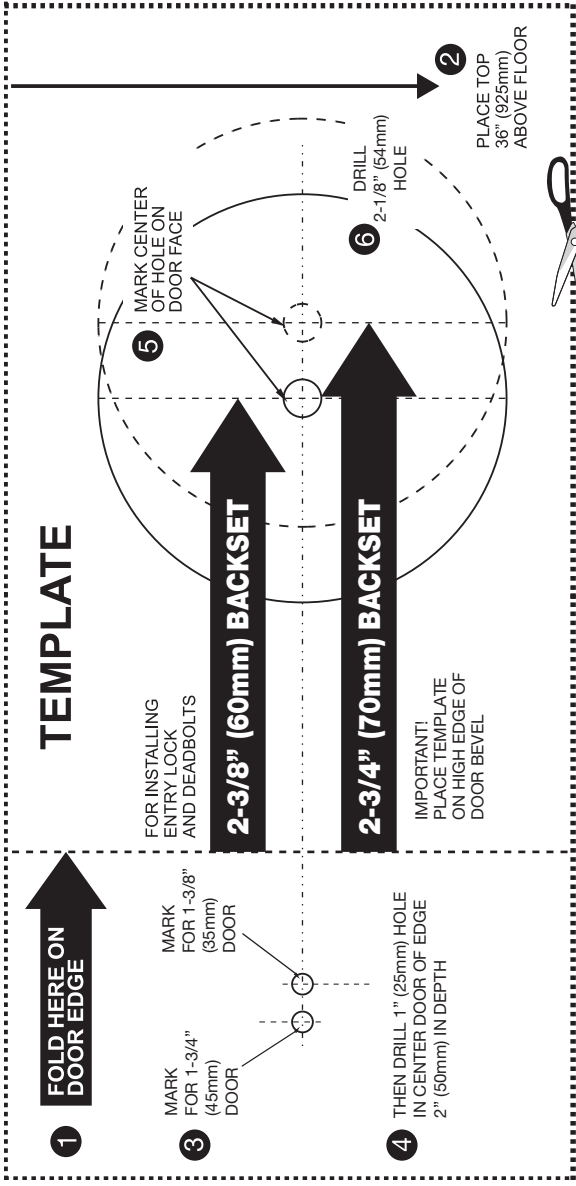
PST**- Local time in Los Angeles, CA, USA

INTERNATIONAL CALL BACK HOURS:

If you need to speak with a consumer assistant and cannot contact us during the Call Center hours above, please send an email or leave a telephone message, including your Name, Telephone Number and the best time for us to contact you during the Call Back hours above and we will make our every effort to contact you and help answer any of your questions or concerns.

* Insert correct Country Code

** Local Time based on Los Angeles California USA



TEMPLATE

1

FOLD HERE ON DOOR EDGE

3

MARK FOR 1-3/4" (45mm) DOOR

MARK FOR 1-3/8" (35mm) DOOR

4

THEN DRILL 1" (25mm) HOLE IN CENTER DOOR OF EDGE 2" (50mm) IN DEPTH

5 MARK CENTER OF HOLE ON DOOR FACE

6

DRILL HOLE 2-1/8" (54mm)

2

PLACE TOP 36" (925mm) ABOVE FLOOR



FOR INSTALLING ENTRY LOCK AND DEADBOLTS

2-3/8" (60mm) BACKSET

2-3/4" (70mm) BACKSET

IMPORTANT! PLACE TEMPLATE ON HIGH EDGE OF DOOR BEVEL

BACK OF TEMPLATE

Programming Record

My Codes:

Date Created

| | | | | | | | | | |
|------------------|-----|-----|-----|-----|-----|-----|--------------|---|---|
| Programming Code | ___ | ___ | ___ | ___ | ___ | ___ | (6 digits) | / | / |
| User Code 01 | ___ | ___ | ___ | ___ | ___ | ___ | (4-8 digits) | / | / |
| User Code 02 | ___ | ___ | ___ | ___ | ___ | ___ | (4-8 digits) | / | / |
| User Code 03 | ___ | ___ | ___ | ___ | ___ | ___ | (4-8 digits) | / | / |
| User Code 04 | ___ | ___ | ___ | ___ | ___ | ___ | (4-8 digits) | / | / |
| User Code 05 | ___ | ___ | ___ | ___ | ___ | ___ | (4-8 digits) | / | / |
| User Code 06 | ___ | ___ | ___ | ___ | ___ | ___ | (4-8 digits) | / | / |
| User Code 07 | ___ | ___ | ___ | ___ | ___ | ___ | (4-8 digits) | / | / |
| User Code 08 | ___ | ___ | ___ | ___ | ___ | ___ | (4-8 digits) | / | / |
| User Code 09 | ___ | ___ | ___ | ___ | ___ | ___ | (4-8 digits) | / | / |
| User Code 10 | ___ | ___ | ___ | ___ | ___ | ___ | (4-8 digits) | / | / |
| User Code 11 | ___ | ___ | ___ | ___ | ___ | ___ | (4-8 digits) | / | / |
| User Code 12 | ___ | ___ | ___ | ___ | ___ | ___ | (4-8 digits) | / | / |
| User Code 13 | ___ | ___ | ___ | ___ | ___ | ___ | (4-8 digits) | / | / |
| User Code 14 | ___ | ___ | ___ | ___ | ___ | ___ | (4-8 digits) | / | / |
| User Code 15 | ___ | ___ | ___ | ___ | ___ | ___ | (4-8 digits) | / | / |
| User Code 16 | ___ | ___ | ___ | ___ | ___ | ___ | (4-8 digits) | / | / |
| User Code 17 | ___ | ___ | ___ | ___ | ___ | ___ | (4-8 digits) | / | / |
| User Code 18 | ___ | ___ | ___ | ___ | ___ | ___ | (4-8 digits) | / | / |
| User Code 19 | ___ | ___ | ___ | ___ | ___ | ___ | (4-8 digits) | / | / |
| User Code 20 | ___ | ___ | ___ | ___ | ___ | ___ | (4-8 digits) | / | / |
| User Code 21 | ___ | ___ | ___ | ___ | ___ | ___ | (4-8 digits) | / | / |
| User Code 22 | ___ | ___ | ___ | ___ | ___ | ___ | (4-8 digits) | / | / |
| User Code 23 | ___ | ___ | ___ | ___ | ___ | ___ | (4-8 digits) | / | / |
| User Code 24 | ___ | ___ | ___ | ___ | ___ | ___ | (4-8 digits) | / | / |
| User Code 25 | ___ | ___ | ___ | ___ | ___ | ___ | (4-8 digits) | / | / |

Lifetime Mechanical and Finish Warranty / 1 Year Limited Electronics Warranty

This product comes with a lifetime mechanical and finish warranty and a one year limited electronics warranty to the original residential consumer against defects in material and workmanship under normal use as long as the original residential purchaser occupies the residential premises upon which the product was originally installed.

ORIGINAL RESIDENTIAL CONSUMER

This warranty is not transferable, and applies to the original purchaser only, as long as the original purchaser occupies the residential premises upon which the product(s) was originally installed. Proof of purchase (original sales receipt) and ownership must accompany all warranty claims. All non-homeowner purchasers (including purchasers for industrial, commercial and business use) are not covered under the terms of this warranty.

WHAT IS NOT COVERED

This warranty is null and void if the product was used for purposes for which it was not designed. This warranty **DOES NOT COVER** normal wear and tear of parts or damage resulting from any of the following: negligent use, misuse or abuse of the product, or use contrary to or in violation of written instructions provided by LH Licensed Products, Inc. Further, this warranty does not cover Acts of God, such as fire, flood, hurricanes and tornadoes. This warranty **DOES NOT COVER** scratches, abrasions, deterioration due to the use of paints, solvents or use of cleaners containing abrasives, alcohol or other solvents, whether performed by a contractor, service company, or yourself. This warranty **DOES NOT COVER** product(s) used in commercial applications, used in common area applications, disassembly, repair or alteration by anyone other than LH Licensed Products, Inc., improper installation or exposure to extremes of heat or humidity. This warranty **DOES NOT COVER** any losses, injuries to persons or loss of property, general damages or costs, and shipping and freight expenses required to return product(s) to LH Licensed Products, Inc. LH Licensed Products, Inc. shall not be liable for any indirect, incidental or consequential damages of any nature relating to this lock. LH Licensed Products, Inc. is also not responsible for costs associated with removing or reinstalling the product.

ADDITIONAL TERMS

LH Licensed Products, Inc. does not authorize any person to create for it any obligation or liability in connection with the Product. LH Licensed Products, Inc.'s maximum liability here under is limited to the original purchase price of the Product. No action arising out of any claimed breach of this warranty by LH Licensed Products, Inc. may be brought by the original residential purchaser more than one (1) year after the cause of action has arisen.



Manufactured by:
LH Licensed Products, Inc.
860 East Sandhill Avenue
Carson, CA 90746

The Honeywell Trademark is used under license from Honeywell International Inc. Honeywell International Inc. makes no representations or warranties with respect to this product.