

ZOSI

PROFESSIONAL SECURITY MADE EASY

Digital Video Recorder

Customer Service Phone: +1 516 329-9916

Senior Customer Service Email: emma@ansjer.com

Z18.3.T.1

HDMI **CE** **FC**
REGISTERED TRADEMARK MULTIMEDIA INTERFACE

For more information of your new system, please refer to www.zositech.com

Statement

Thank you for purchasing this product. ZOSI is committed to providing our customers with a high quality, reliable security solution. ZOSI cannot assume responsibility for any consequences resulting from the use thereof.

Before Installation

This product may require cabling. It is strongly suggested to test all products and parts before installation and cabling.

Applications

The system is a standalone system. It need to connect with any monitor to start live view (Such as PC monitor, TV etc.) By adding a 3.5" SATA hard drive to the DVR, you can record&playback videos.

By connecting the DVR to the Internet, you can view the cameras anywhere anytime.

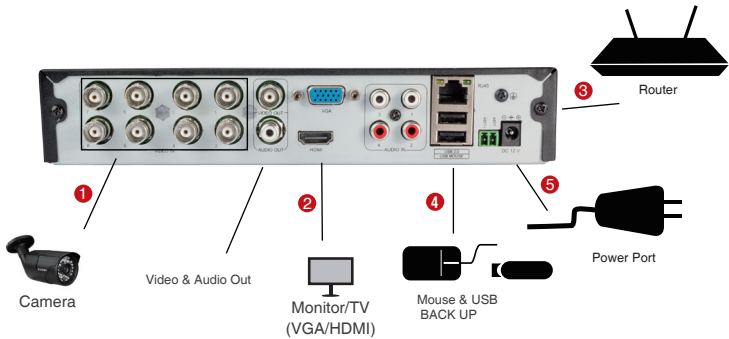
Note

This instruction is used to guide you install the system and remote surveillance, more instructions and details can be downloaded from <https://support.zositech.com/>.

Tech Support

Website: www.zositech.com Email: service@zositech.com

1. Connecting your system



8 channel configuration shown. 4/16 channel will have the respective number of video inputs.

*Not included/sold separately

- 1 Connect the Camera to DVR and Plug Camera to power.
- 2 Connect monitor to the DVR with HDMI,VGA,BNC port
- 3 Connect the DVR to Router with an Ethernet cable
- 4 Plug the mouse to the USB port
- 5 Plug DVR to power

Within seconds, you should see the Wizard Setting.

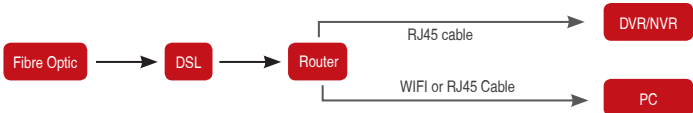
Then set password login to the DVR . (Password must be at least 6 characters long)

Note: If you forgot your password, please contact us to reset your password.

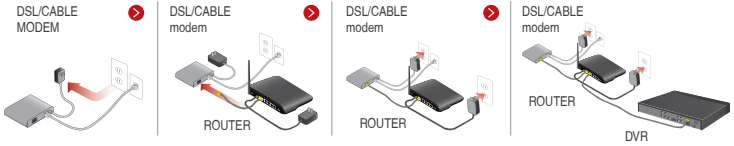
2. View on Smartphone

Step 1 Connect the DVR to the Internet

A: How to connect DVR to LAN ?

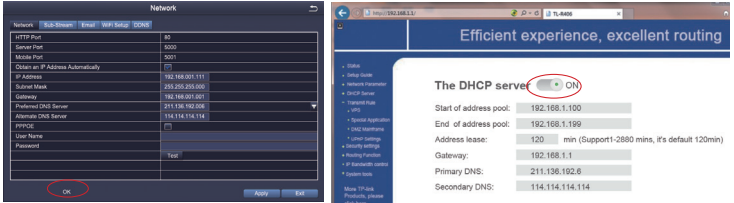


Unplug modem then connect router and device



B: How to test your DVR's network ?

- (1) Right click Mouse > Go to Main Menu > Setup > Network
 - (2) Tick 'Obtain IP address automatically'
 - (3) Click 'Test', if 'OK' is displayed, the network is connected successfully.
- Note: Please ensure DHCP in your router is open.**



Step 2 Download App

Search **Zosi Smart** in App store or Google Play. Or Scan the QR Code to download the App.
Please go to <https://support.zositech.com/download-Zosi-Smart-and-AVSS>.



Zosi Smart



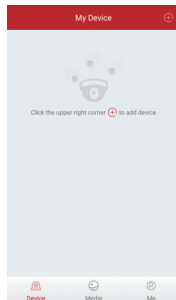
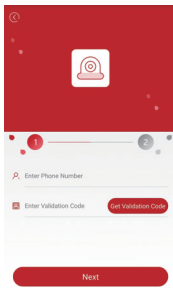
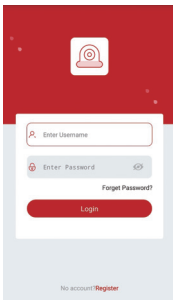
App store



Google play

Step 3 Run the App

- A: Install the free **Zosi Smart** App.
- B: Tap Register and input your mobile phone number to get validation code, click next to input email box, password, then save it.
- C: Login the App,get into the main interface (My Device), click "+" in the upper right corner,three different options of device addition are available.



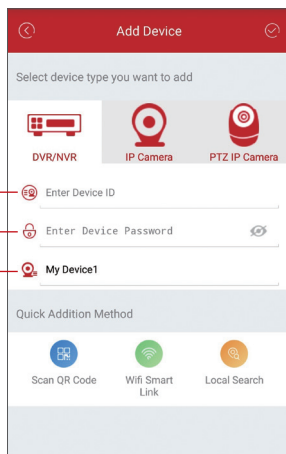
D: Click "DVR/NVR" and "Scan QR Code"

1 Enter the Device ID or Scan QR Code.

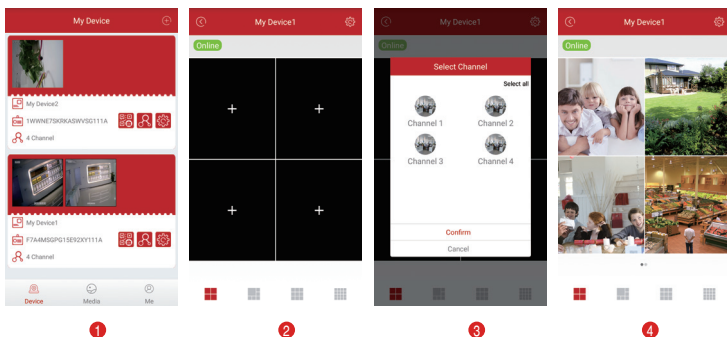


2 Password: Enter the DVR's Password

3 Name: Choose a name for your system of your choice.

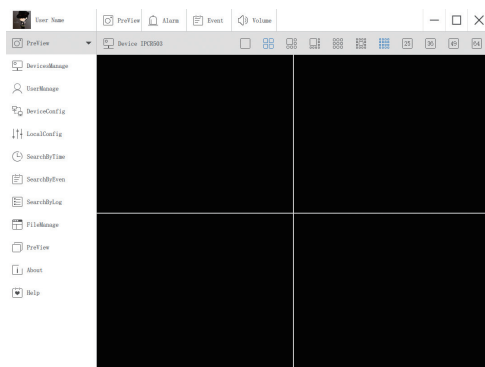


E: Then will back to the Device list > Tap the device > Tap "+" to select channel you need > Tap Confirm to start preview.

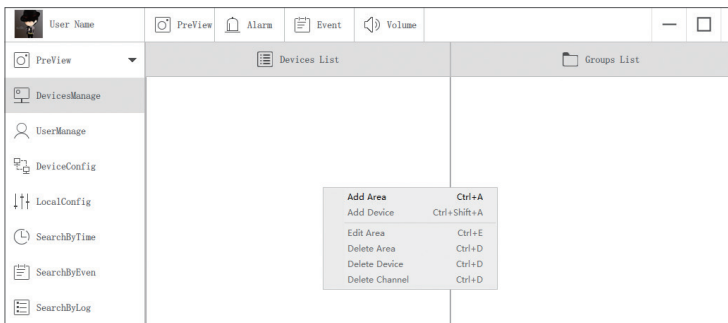


3. View on PC Client Software

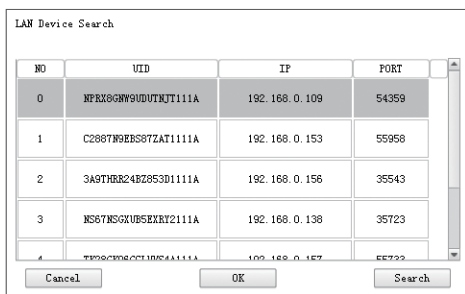
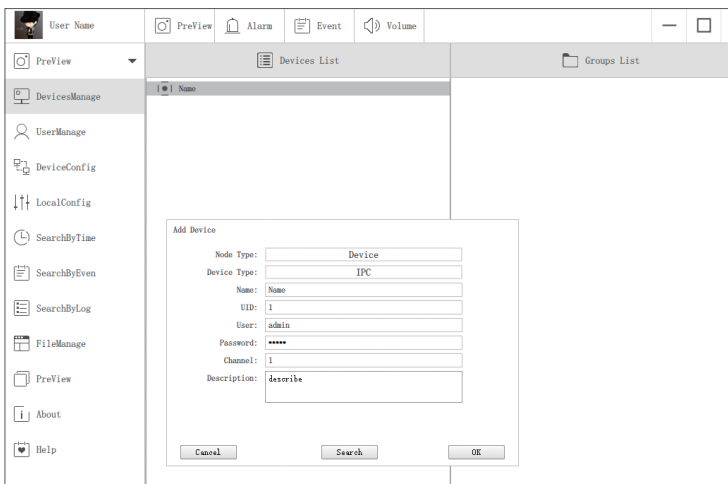
Download AVSS PC Client , install and start it as below picture.



Click the Devices Manage to add the device.
 First, crate a group.
 Then, add device under the group.

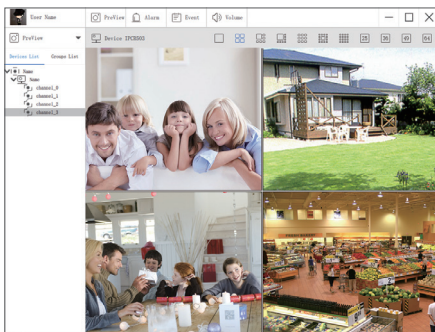


Please note to choose device type (DVR or IPC) when add device.
 There are two ways to add device.
 One way is adding device by directly input UID number.
 Another way is adding the local device by searching LAN on search bar.



Click "ok" to complete device adding.

Click "PreView" on menu, and double click the device you want to watch on list, the image will show up.



REC 4. Record video

The system may not include Hard Disk depending on the kit you selected. This system works with most 3.5" SATA Hard Disk or 2.5" SATA Hard Disk.

1. Install a Hard Disk (if your system has preinstalled Hard Disk, please skip this step)



- ① Unplug your DVR from power, unscrew and remove the top cover.
- ② Connect the SATA power and data cables from the DVR to the corresponding ports on your Hard Disk (as shown).
- ③ Place the Hard Disk into the DVR. Any cable should cross up over the Hard Disk.
- ④ Holding the Hard Disk and the DVR, gently turn it over and line up the holes on the Hard Disk with the holes on the DVR. Using a Phillips screwdriver, screw the provided screws into the holes. Assemble the cover.

Note:

After installing a Hard Disk, you need to first format the Hard Disk before recording.

Right click the mouse > go to Main Menu > Disk Management > Select the Hard Disk > Click Format > Apply.

2. Record video

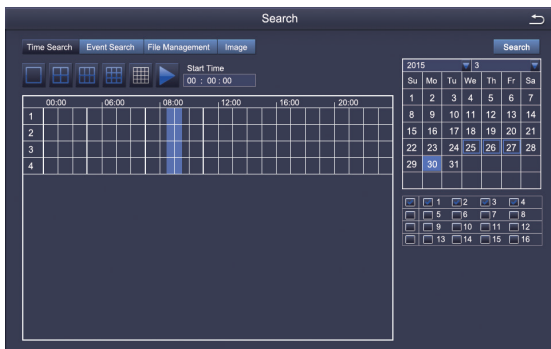
Right click mouse > Go to Main Menu > Setup > Record

You shall see the record settings for all channels. Change the record setting according to your preference and apply the changes.



5. Playback video

Get into system **Main Menu > Search**, system presents picture as following.



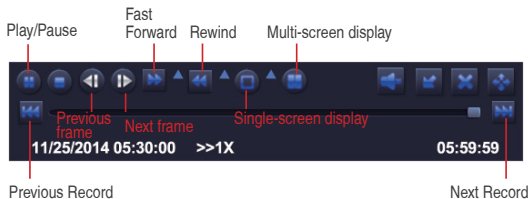
Search the video you want via time or Event, then play it.



Select the channel



Start playing



Previous Record: Move to last recorded event

Next Record: Move to next recorded event

Fast Forward: video can be played at different speed, from 1/4 times to 16 times.

Rewind: Video play can be rewinded at 1 time, 8 times, 16 times and 32 times.


Screen Display Mode: Both single-screen and multi-screen are available. You can choose how many channels you want to playback one time. Channel without records presents blank screen.



6. Motion Detection

Set motion Detection,DVR will record only when motion or movement is detected.

Right click mouse > Main Menu > Setup > Alarm > Motion > Motion detection.

The system records when motion is detected by the camera.  An icon is shown when motion is detected.

Montion

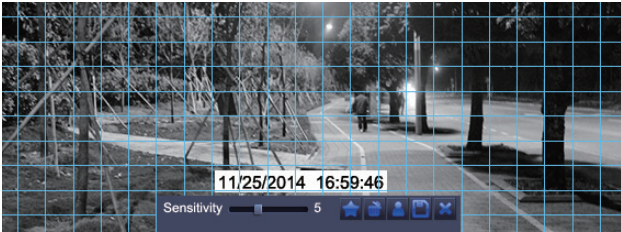
Motion Schedule

CH	Enable	Holding Time[s]	Trigger	Area
1	<input checked="" type="checkbox"/>	10	Setting	Setting
2	<input checked="" type="checkbox"/>	10	Setting	Setting
3	<input checked="" type="checkbox"/>	10	Setting	Setting
4	<input checked="" type="checkbox"/>	10	Setting	Setting
5	<input checked="" type="checkbox"/>	10	Setting	Setting
6	<input checked="" type="checkbox"/>	10	Setting	Setting
7	<input checked="" type="checkbox"/>	10	Setting	Setting
8	<input checked="" type="checkbox"/>	10	Setting	Setting
9	<input checked="" type="checkbox"/>	10	Setting	Setting
10	<input checked="" type="checkbox"/>	10	Setting	Setting
11	<input checked="" type="checkbox"/>	10	Setting	Setting
12	<input checked="" type="checkbox"/>	10	Setting	Setting

All

10

Default Apply Exit




Select Camera. Tick the Channel you want to record on motion detection.

Holding Time. Set recording time length after motion stop.


Trigger. Multi-channels can be set to record when detect the motion by one of cameras. For example, when camera 1 detects motion, camera 2 and camera 3 can be triggered to record as well.

Area. It is allowed to set sensitivity area of camera viewing range.

Click **STAR**  to make the whole viewing range as sensitivity area;

Click **Trash Box**  to remove sensitivity area;

Click and drag mouse to draw or erase the sensitive area.

 Click to save setting

 Click to exit

As Color and luminance is important for sensitivity, so it's necessary to adjust its value at specific conditions. The default value is 4 while value range is from 1 to 8.

Right click mouse to show or hide control menu at screen bottom.

Test the setting by moving something or some one walk through grid area within camera view range. If DVR detects movement within grid area, a yellow humanoid figure would be presented in the screen. The grid could not cover flag, trees or some other flow objects in the wind to avoid false alerts.





7. Time scheduled Record

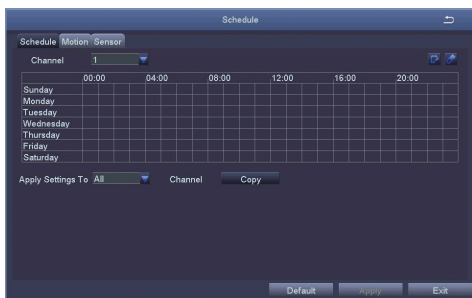
Set Time scheduled record, you may configure each channel to record at specific times based on time of day.

Right click the mouse > go to Main Menu > Setup > Schedule.

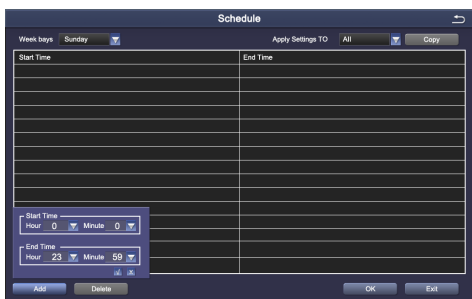
The schedule for automatic recording can be set either of two ways.

1 By highlighting individual hours for specific days by using the pencil tool  in the upper right of the window. The adjacent eraser tool  removes the highlighting in a block. click on either the pencil or eraser tool to turn them off.

Settings can be copied and applied to any or all of the channels and to any other day.



2. Blocks of time to be recorded can also be set up by double clicking on a field adjacent to a day. Multiple schedules can be created and saved with start and stop times down to the minute. These can then be applied to multiple days and cameras.



Note:

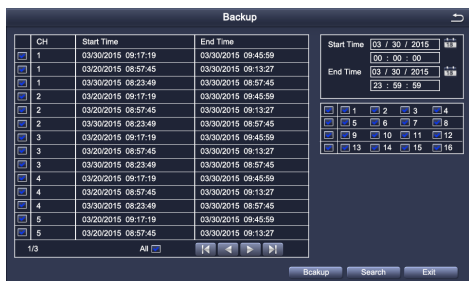
Recording Priority: Alarm Recording > Motion Detection Recording > Manual Recording > Time Scheduled Recording.



8. Backup the video for memory

1. Plug an USB flash disk to your DVR's USB port.

2. Right click the mouse > Main Menu > Backup > choose the channel and time period > Search > Choose the video clips you want to backup > Click Backup.

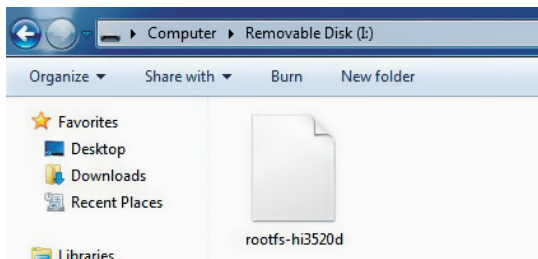




9. Upgrade the DVR

If your DVR need to upgrade , please contact us to get a upgrade software.

Step 1. Put software into U-Disk, and ensure software is at root directory as below.

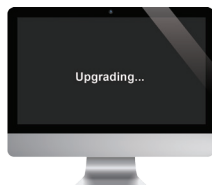


Step 2. Put U-Disk into DVR port USB2.0. Unplug the mouse from the front USB socket.



USB2.0

Step 3. Restart DVR(Power off and on), it will be upgraded automatically.



Note: Please wait for a few minutes until DVR interface presents.



ZOSI

PROFESSIONAL SECURITY MADE EASY

www.zositech.com
service@zositech.com

All rights reserved. No part of this publication may be reproduced by any means without written permission from ZOSI. The information in this publication is believed to be accurate in all respects.

ZOSI cannot assume responsibility for any consequences resulting from the use thereof. The information contained herein is subject to change without notice. Revisions or new editions to this publication may be issued to incorporate such changes.

