

VANTRUE

# Nexus 4 Pro S **N4 Pro S**

USER MANUAL **V1.4**



[vantrue.com](http://vantrue.com)

truly driven.



Contact Us



Join Our Community



*Instagram*  
[instagram.com/vantrue\\_official/](https://www.instagram.com/vantrue_official/)



**LINE**  
ID: @860fnbxk

# Contents

<b>1. Quick Start Guide</b> .....	<b>1</b>
1.1 What's in the Box? .....	1
1.2 Installation Guide .....	2
<b>2. Basic Operation</b> .....	<b>6</b>
2.1 Camera Overview .....	6
2.2 Button Description .....	7
2.3 LED Indicator .....	9
2.4 Screen Overview .....	9
2.5 Operation Guide .....	10
2.6 Menu Introduction .....	33
<b>3. Specifications &amp; FAQs</b> .....	<b>40</b>
3.1 Specifications .....	40
3.2 Safety Warnings .....	41
3.3 FAQs .....	43
<b>4. Warranty &amp; Support</b> .....	<b>44</b>

## Safety Warnings:

- Before using the camera for the first time, please read the product manual carefully to ensure correct operation.
- The dash cam needs to be connected to the power supply to work properly.
- To ensure driving safety, please do not operate the device or watch the driving video via cell phone during driving.
- This product needs to be inserted into the Micro SD card. Please make sure the Micro SD card is functioning properly and is compatible with the device.
- Please do not disassemble or repair the dash cam without authorization. If the camera malfunctions, please contact VANTRUE official customer service.
- Please avoid installing the dash cam in a position that will block the driver's view.
- Please keep away from high temperature and humid environment to ensure the normal operation of the device.
- In order to improve the product experience, the product firmware will be updated from time to time, you can download the latest version to enjoy the latest features as needed.
- Please do not install the dash cam in front of the passenger to avoid safety hazards caused by the device falling off.
- Please note that the use of wireless CarPlay or Android Auto may affect the connection of the Vantrue APP.
- Please use this product reasonably in compliance with relevant laws and regulations.

# 1. Quick Start Guide

## 1.1 What's in the Box?



A. N4 Pro S Front Camera



B. GPS Adhesive Mount



C. Car Charger with Built-in Type C Cable (11.5ft)



D. Type C Data Cable (3.3ft, for transferring files only)



E. Electrostatic Stickers\*2



F. Crowbar



G. Dust-free Cloth



H. Warning Stickers \*2



I. Spare Adhesive Stickers



J. Quick User Guide



K. Cable Clip\*6



L. Base for Adhesive Mount



M. Adhesive Promoter

## Optional Accessories (Buy Separately)



**N.** RC18 Rear Camera (non-waterproof)



**O.** RC09 Rear Camera (waterproof)



**P.** Rear Camera Cable



**Q.** Hardwire Kit



**R.** CPL Filter



**S.** Remote Control



**T.** LTE Module



**U.** LTE Data Cable

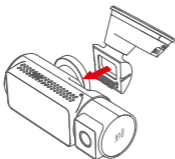
## 1.2 Installation Guide

**Here are some warm tips about installing the N4 Pro S dash cam:**

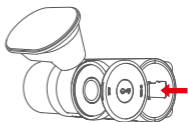
- Please use a cleaning tool to clean the mounting position of the front camera and the rear mirror camera on the windshield first. After cleaning it, then install the camera;
- Before installing the front camera, we recommend that you install the static sticker first, and then install the front camera;
- When installing the GPS bracket, we recommend that you press the bracket against the windshield after installing the 3M bracket in order to expel the air on the contact surface between the bracket and the windshield, and increase the adhesion of the bracket.
- After completing the installation of the car charger adapter cable and the rear camera, we recommend you to use the complimentary cable clasp to store the car charger adapter cable and the rear lens cable (refer to the reference pictures ⑤ and ⑥)

- When using the N4 Pro S dash cam for the first time, we recommend that you format the memory card first.

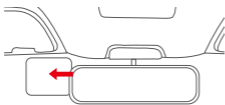
## Installation Diagram



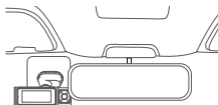
- ① Attach the bracket to the front camera



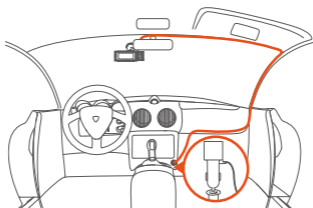
- ② Insert a memory card



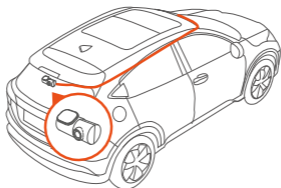
- ③ Installation of electrostatic sticker to windshield



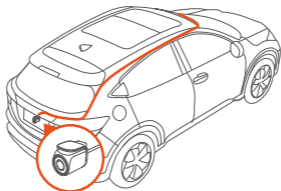
- ④ Installation of the N4 Pro S dash cam



⑤ Installing the Car charger adapter and Wiring

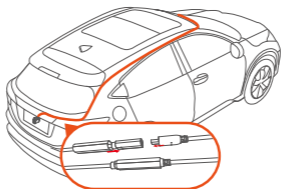


⑥ Installing RC18 the rear camera and wiring  
(Optional)



⑦ Installing RC09 the rear camera and wiring  
(Optional)

**Note:** When installing the optional RC09 rear camera externally, a heat shrink tubing must be slipped over the connection between the rear camera and the cable interface, and then heated to fit tightly around the joint to ensure sealing and achieve a waterproof effect.

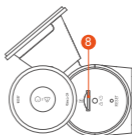
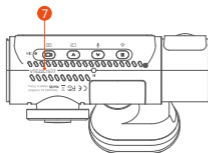
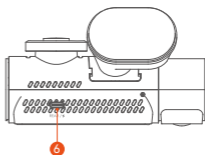
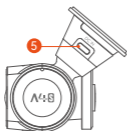
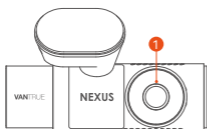


Please note that the bracket is a split bracket . If you need to remove the bracket , simply push the bracket away from the bracket base to complete the removal.



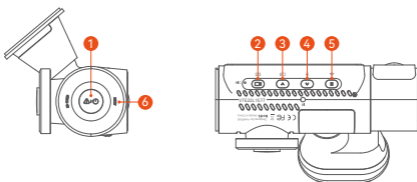
## 2. Basic Operation

### 2.1 Camera Overview



- 1 N4 Pro S Front Camera
- 2 3.19" IPS screen
- 3 Cabin Camera
- 4 Infrared Lights for Cabin Camera
- 5 TYPE-C Port for Charging  
(Cannot be used for Rear Camera connection and data transfer)
- 6 TYPE-C Port for Connecting Rear Camera Cable or Transferring Data
- 7 Serial Number
- 8 Memory Card Slot

## 2.2 Button Description



No.	Key	Description
1		<ul style="list-style-type: none"> <li>• In the power-on state: long press to turn off the camera; in the power-off state, short press to turn on the camera;</li> <li>• In the recording interface: short press to turn on emergency recording and snapshot;</li> <li>• Wi-Fi mode: short press to snap a photo;</li> <li>• In file browsing, short press to pop up the menu for deleting files.</li> </ul>

2



- In the recording screen: Short press to start/pause recording, long press to turn off the screen;
- In the menu settings: short press to confirm the option;
- In the playback video: short press to play the video or pause the video.

3



- During video recording: short press to switch the video window;
- In the menu setting and file browsing screen: short press to select the previous option or file, and long press to scroll through the above options or files.
- When playing back the file: short press to play back the video at double speed.

4



- During video recording: short press to turn on/off the microphone; Long press to enter parking mode (this operation can be done with parking mode on);
- In the menu settings and file browsing screen: short press to select the next option or file and long press to scroll through the options or files below;
- When playing a file, short press to pop up a menu for deleting files.

5



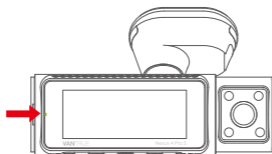
- In the standby mode, short press to enter the menu;
- In the power-on state, long press to turn on or off WiFi;
- In the menu setting and file browsing interface, short press to return to the previous interface.

6

Reset  
Button

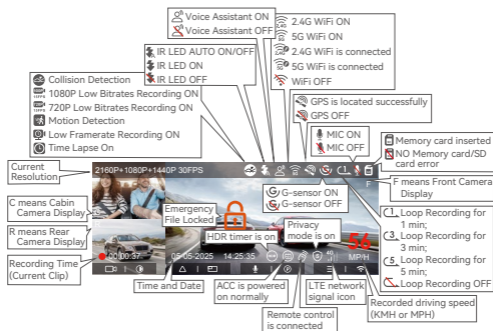
- Short press to restart the camera.

## 2.3 LED Indicator



LED	LED Status	Description
REC	Steady green light	In standby
	Blinking green light	Camera is recording

## 2.4 Screen Overview



## 2.5 Operation Guide

### --APP Download

Please scan the QR code for the relevant version below to download the app and install it.

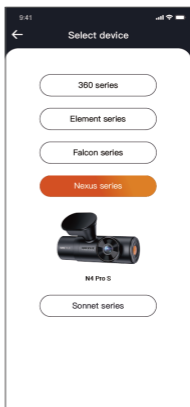
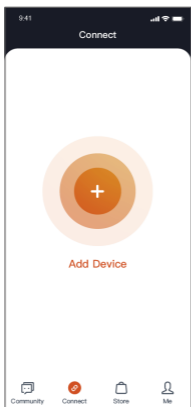
Search for the "Vantrue" app in App Store or Google Play Store to find the app and then download and install it on your phone.



### --Add a Device

Wi-Fi is automatically turned on when the N4 Pro S dash cam is turned on. After turning off Wi-Fi, users can turn on Wi-Fi again by using the shortcut keys, the voice control function, or by going to the menu settings.

After the N4 Pro S camera's Wi-Fi is turned on, click "Add Device" on Vantrue App, select Nexus series, select N4 Pro S model, confirm the corresponding Wi-Fi name, and finally click to confirm the Wi-Fi connection.



**Please note:**

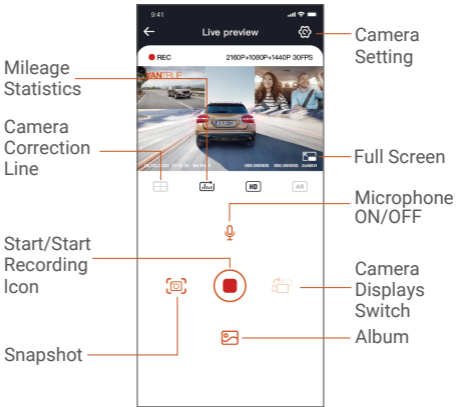
- Please check whether the Wi-Fi function of your phone is turned on first.
- The initial password for this device is only used for initial login. In order to prevent potential security risks, please be sure to change the initial password after the initial login to prevent others from logging into your device without authorization or other adverse consequences.
- If you forget the password you set, you can go to the camera's "System Settings" and choose Restore Default Settings. After the camera restores the default settings, the Wi-Fi password is the initial password (12345678).

Please note that the camera's Wi-Fi password can only be changed via the Vantrue app.

**--Guidelines for the use of the APP**

Please scan the QR code for the relevant version below to download the app and install it.

Search for the "Vantrue" app in App Store or Google Play Store to find the app and then download and install it on your phone.



After entering the APP real-time preview, you can do the following operations.

- **Video Preview:** After the APP connects to the camera successfully, the camera enters the real-time preview page, click the full screen button or cell phone horizontal playback, the real-time screen automatically switches to full screen preview mode. Click the window switch button to switch the front, and cabin video windows, but only multi-channel recording mode can use this function.
- **Playback Video:** You can view the recorded video or photo files in the Micro SD card in the APP, click "File" and then select the video to play back.
- **Video Download:** You can choose to download videos or pictures in the Micro SD card browse file interface or in the video playback. After downloading the video, you can play it in the App local file and view the GPS track of the video.

- **Picture Capture:** In the application's live preview screen, you can capture the current picture.
- **Mileage Statistics:** Users can click to download the mileage information according to their needs. The mileage information will be saved in the APP as a picture or PDF file.
- **Camera Correction Line:** The lens balance is corrected by the accurate cross line, so that the recording image will not be skewed.

## --APP Upgrade

Open the Vantrue App, go to Me > About > Check for Updates. The App will automatically check if a new version is available. If an update is found, follow the on-screen prompts to upgrade.

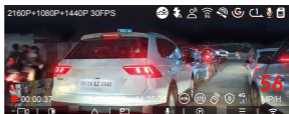


## A. Resolution and PlatePix™ Timer

The picture quality mode is standard by default. Users can turn on the PlatePix™ mode on demand and set the automatic on and off time of this mode with the PlatePix™ timer. This function prioritizes the enhancement of license plate clarity, avoiding the blurring of license plates due to lighting problems, which may affect the evidence of accidents.



PlatePix™ Mode On

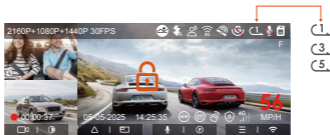


PlatePix™ Mode Off

### --Loop Recording

After inserting the memory card and connecting the power, the N4 Pro S dash cam will automatically turn on and enter loop recording. The duration of each recorded video will be saved based on the loop recording time you set, saved in the Normal Video folder.

When the capacity of the Normal Video folder reaches 70% of the total capacity, the new loop recording file will automatically overwrite the original loop recording files. After this function is enabled, the video file will automatically overwrite the loop, so as not to stop recording during the driving process.





## Note:

- The normal operation of the loop recording function is very dependent on the speed of the memory card, so please format the memory card regularly to avoid problems such as excessive memory card files and card aging that affect the normal loop recording.
- Please check the loop recording video regularly to avoid the necessary videos being overwritten by loop.
- After loop recording is turned off, the lock video function will no longer work.
- When the loop recording setting is turned off, the length of each recording is 20 minutes. When the memory card is full, the camera will stop recording and prompt "card is full!"

## --Event Recording

When driving, the user can lock manually or the dash cam automatically locks the recording if special circumstances are encountered.

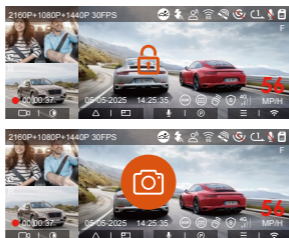
**To manually lock the video**, just press the  button to lock the current video and capture it.

During the lock video period, you can press the  button to capture multiple times.

**Auto-lock event recording:** When the car is hit by a collision or vibration, the dash camera will automatically trigger and lock the current video when it senses the vibration.

After the emergency recording is finished, the video will

be automatically saved in the Event Video Folder and the photo will be saved in the photo folder.



### Note:

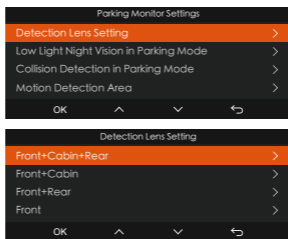
- The sensitivity of the automatic locking video trigger is determined by the sensitivity of the collision. The higher the sensitivity setting, the greater the probability of being triggered.
- When the total capacity of the event video files is 30% of the total capacity of the current memory card, the new event video files will automatically overwrite the old event video files.

We recommend checking and saving event video files regularly to avoid losing them.

- Lock recording will not trigger in either of the following situations: Loop recording is off or Time lapse recording is on. When loop recording is turned off/time-lapse recording is turned on, only pictures can be captured when locking the recording.

### Parking Mode

When parking, you can set up a variety of different parking monitoring settings on your own, depending on the vehicle itself, the parking environment, your own needs, and other factors.



Please note the following precautions when using the parking mode:

- ① To ensure that the dash camera can use the parking mode function normally, please use the VANTRUE hardwire kit cable or other stable and continuous power supply for the camera.
- ② It is recommended to use VANTRUE ACC hardwire kit cable. If you use other brands of ACC hardwire kit cable, you may not be able to use the ACC function due to the different location of the ACC detection PIN pin.
- ③ In the hot and sunny environment of summer, we recommend you to choose the parking mode of collision detection. When the ambient temperature in the car reaches 60℃, we recommend you to turn off the camera to avoid the camera working abnormally due to high temperature.
- ④ Time-lapse recording and parking mode (including collision detection, motion detection, low bit rate recording, low frame rate mode) can only be turned on one of the two. If one of them is turned on, the other one will be turned off automatically.
- ⑤ All the files recorded in parking mode will be saved in the parking video folder, in order to avoid the parking mode files being overwritten by the loop, please check them regularly to avoid losing them.

- ⑥ The parking mode function will be improved with the firmware upgrade of the N4 Pro S dash camera. Please pay attention to the firmware description announcement on VANTRUE website for specific changes, or consult with customer service staff.

## **Parking Mode Introduction**

### **Parking Mode Activation/Deactivation Methods:**

#### **1. Auto Mode (Default)**

Without ACC (G-Sensor Mode): Enters automatically after 5 minutes of vehicle inactivity; exits automatically upon secondary collision detected by G-Sensor.

With ACC connected: Enters automatically when the vehicle is turned off (ACC OFF); exits automatically when the vehicle is started (ACC ON).

#### **2. ACC Mode**

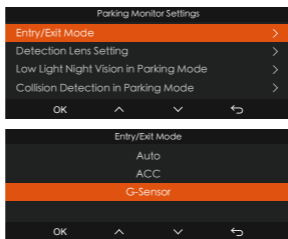
Enters automatically when the vehicle is turned off (ACC OFF); exits automatically when the vehicle is started (ACC ON). Requires proper wiring via an ACC hardwire kit cable.

#### **3. G-Sensor Mode**

Enters automatically after 5 minutes of vehicle inactivity; exits automatically when the G-Sensor detects a secondary collision.

#### **4. Manual Mode**

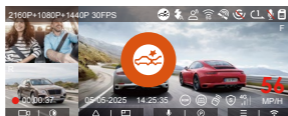
Press and hold the shortcut button to enter; press any button to exit.



## Parking Mode 1: Collision Detection

When the Collision Detection setting is on, the Collision Detection icon will be displayed in the recording interface, indicating that the camera is currently using the Collision Detection mode.

The sensitivity of Collision Detection value can be selected as 1/2/3/4/5. The higher the sensitivity level, the easier it is to trigger Event recording. The sensitivity is highest at 5.



When the G-sensor detects that the vehicle has been stationary for 5 minutes (entering collision detection mode), the camera will display the appropriate icon in the center of the screen and automatically shut down. After shutting down, if the vehicle vibrates or moves, the camera will automatically turn on and record a 30 seconds video, and then turn off again to ensure that key images are recorded.

According to different user habits, the collision detection mode provides two startup modes: quick start and power saving mode. Users can go to **Record Setup > Parking Monitor Settings > Collision Detection in Parking Mode** to choose.


**Quick start:** the device enters the standby mode with the screen off, and when a collision occurs, the device will immediately light up the screen to record video, and save the file and continue to enter the standby mode after the recording is completed.

**Power Saving Mode:** the device is completely turned off, and automatically turns on to record after detecting a collision, saves the file and turns off the device after recording is completed, which is more energy-saving.

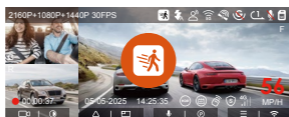
**Note:**

If the camera continues to be hit by a collision during the collision detection recording process, it will exit the collision detection mode, enter normal recording, and continue to stand still for 5 minutes before entering collision detection again.

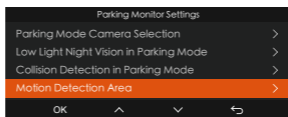
## Parking Mode 2: Motion Detection

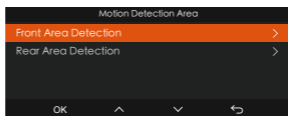
When the Motion Detection setting is on, the Motion Detection icon  will be displayed in the recording interface, indicating that the camera is currently using the Motion Detection mode.

**The process of triggering recording:** N4 Pro S Dash Cam supports pre-recording function, which can better restore the whole process of the event. It adds 10 seconds of recorded footage before the triggering event to the motion detection video, resulting in a 40-second motion detection recording (10 seconds of pre-recording + 30 seconds after the triggering recording).



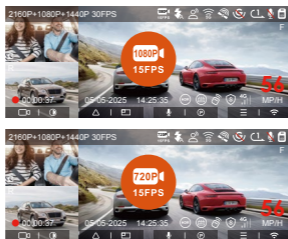
You can select the detection lens and adjust the area of motion detection in the parking monitoring settings to more accurately monitor activities within a specific range. This function works in conjunction with the Motion Detection Parking Mode to ensure that the device automatically triggers recording when it detects abnormal movement, increasing surveillance efficiency and reducing ineffective recordings.





### Parking Mode 3: Low Bitrate Recording

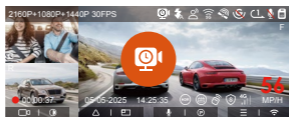
When low bitrate recording is turned on, the screen displays the low bitrate icon and records according to the set resolution (1080P 15FPS or 720P 15FPS).



The way to enter the low bitrate recording: after parking the car and turning off the engine, the device automatically enters the low bitrate mode, the resolution of all the cameras are adjusted to the set value, and the recording is recorded according to the cycle recording time.

### Parking Mode 4: Low Framerate Recording

When low frame rate recording is turned on, the camera will record according to the 1FPS/5FPS/10FPS/15FPS setting selected by the user.

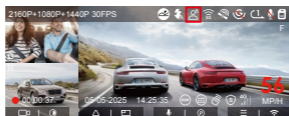


**How to enter the low framerate recording mode:** After parking the car and turning off the engine, it will automatically enter the low frame rate mode, which can effectively retain the video integrity and save storage space.

**Note:** The device needs stable power supply, if the power supply is disconnected, the camera will automatically shut down.

## Voice Control

You can control the camera with voice command, such as take photo, video start, turn on/off Wi-Fi, lock the video, etc. Currently supported languages are English, Japanese, Russian, Chinese and French. For more detailed voice commands, please go to **System Setup > Voice Content** to view them.

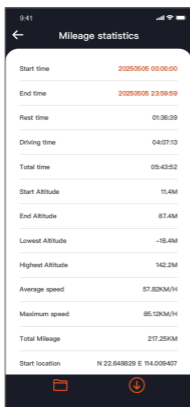


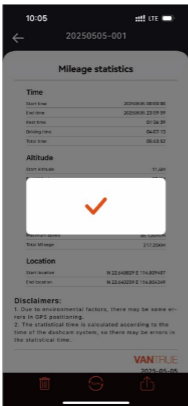
Voice recognition has options of low sensitivity/standard/high sensitivity/off. The default is standard sensitivity.

## Mileage Statistics

N4 Pro S dash cam uses GPS information to analyze mileage statistics such as driving time, driving mileage, altitude, driving speed, etc. during the driving process. Mileage files can be exported via APP.

In the APP real-time preview interface, you can select the start time and end time, click OK, then you can download the mileage statistics file in PDF or JPG format and save it in the APP local folder.





## GPS Function

GPS is enabled by default. The N4 Pro S dash camera receives GPS signals via a GPS mount. It automatically corrects the time and date in your area, records the location where the video was taken and the speed of the vehicle at the time.

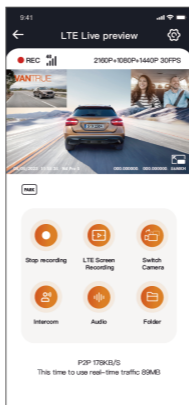


**Note:**

- ① The GPS connection will be completed within 1 minute after you turn on the device. If the GPS connection is not successful within 1 minute, please check
  - whether the GPS function is enabled;
  - whether the device is correctly connected to the GPS bracket;
  - whether the environment affects the signal (e.g. underground parking lots, tunnels, densely built-up areas, etc).
- ② GPS information is recorded along with the video. To view it, please download and install the VANTRUE App and VANTRUE GPS Player (available for download at [www.vantrue.net](http://www.vantrue.net)).

**LTE Setup (need to use with LTE module, sold separately)**

For users to remotely view their vehicle's parking situation, Vantrue introduces the LTE module. Users can insert the SIM card into the LTE module and connect the dash cam to realize remote monitoring.



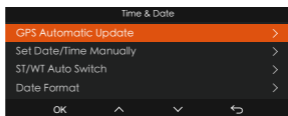
In LTE settings, users can customize the settings:

- a. Message push settings
- b. SIM card traffic consumption limit
- c. Picture quality of collision video upload

Users can flexibly adjust the settings according to the SIM card package to ensure the efficient use of traffic and remote monitoring functions.

### **Automatic time correction via GPS**

The default setting of GPS auto time correction for N4 Pro S dash cam is on. If your location is Los Angeles, you can select GMT-08:00. If you don't know the time zone of your location, you can connect your phone to the Wi-Fi of the camera, and turn on the automatic time correction function in Vantrue APP, so the camera will correct the time zone of the camera according to the time zone of your phone.



**Note:**

- GPS automatic time correction needs to set the correct time zone, you can refer to the representative cities of each time zone.
- Automatic switching between Winter Time and Summer Saving Time is available for North America only.

For users to watch clearer videos, Vantrue provides an exclusive PC player:

-Mac users can search for “Vantrue Player” in Apple APP Store and download it.

Windows users can go to Vantrue official website (<https://www.vantrue.net/app/app.html>) to download the latest version of the player.

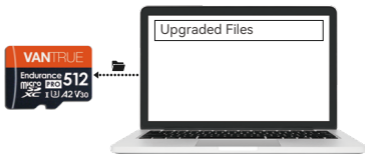
The player supports video playback, GPS track view, speed display and other functions to provide users with a better video experience.



## N4 Pro S Dash Cam Firmware Update

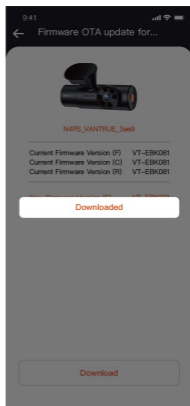
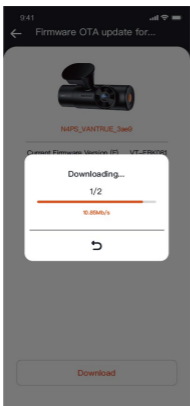
### Upgrade method 1: Updates via files

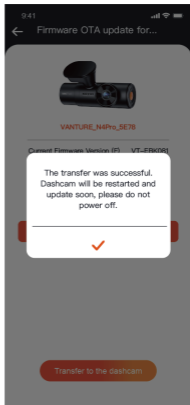
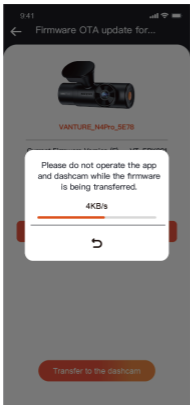
Go to VANTRUE website to download the latest N4 Pro S dashcam firmware, copy the firmware file to the root directory of the memory card, then insert the memory card back into the N4 Pro S camera, the system will automatically upgrade with the updated firmware of the Micro SD card after the dash cam is turned on.



### Upgrade method 2: OTA (Over the Air) Firmware Update

After opening the APP, if you receive an update reminder of the dashcam software, please confirm the upgrade, and then it will jump to the OTA upgrade interface, and then upgrade according to the APP guidelines.





- To upgrade firmware via file or OTA upgrade, N4 Pro S camera needs to keep power on.
- To upgrade via OTA, internet data traffic is required to download the upgrade file.
- If you upgrade the firmware by file, you need to format the memory card on the N4 Pro S dash camera, and then copy the upgrade file to the memory card to upgrade the firmware.

## 2.6 Menu Introduction

The N4 Pro S dash camera function setup has three sections, Record Setup, System Setup, and File Browsing. You can set your dash cam according to your requirements with these function setting.

### 2.6.1 Record Setup

**-Resolution: The N4 Pro S camera has 3 recording modes:**

Recording Mode	Resolution	Default Settings
Front+Cabin+Rear	2160P+1080P+ 1440P 30FPS	√
	2160P+1080P+ 1080P 30FPS	
	2160P+720P+ 1080P 30FPS	
	1440P+1080P+ 1440P 30FPS	
	1440P+720P+ 1080P 30FPS	
	1080P+1080P+ 1080P 30FPS	
	1080P+720P+ 720P 30FPS	
Front+Cabin	2160P+1080P 30FPS	√
	2160P+720P 30FPS	
	1440P+1080P 30FPS	
	1440P+720P 30FPS	
	1080P+1080P 30FPS	

Front+Cabin	1080P+720P 30FPS	
Front+Rear	2160P+1440P 30FPS	✓
	2160P+1080P 30FPS	
	1440P+1440P 30FPS	
	1440P+1080P 30FPS	
	1080P+1080P 30FPS	
Front	3840x2160P 30FPS	✓
	2560x1440P 30FPS	
	1920x1080P 30FPS	
	1280x720P 30FPS	

**-Picture Quality:** There are 2 options available, Standard and PlatePix™. The default setting is Standard.

**-Loop Recording:** Default setting is 1 min. You can choose the options among 1/3/5 min and OFF. With it turned off, it will record 20 minutes of video each by default until the card is full and then it won't record.

**-IR LEDs:** The default setting is Auto. You can set it to auto/off/on.

**-G-Sensor:** Select the level of G-sensor you need, then you can set 3 directions (Front + Rear/Left + Right/Up + Down). The G-sensor value in each direction can be selected as 1/2/3/4/5/Off. The higher the sensitivity level, the easier it is to trigger event recording. G-sensor is most sensitive when set to 5.

- Privacy Mode:** The default setting is off. With it turned on, the video is recorded in a three-stage loop mode.
- Audio Recording:** The default setting is on. Set recording to on or off.
- Audio Noise Reduction:** The default setting is on. It adjusts the audio effect of recording by dynamic noise reduction. You can choose to turn it on or off.
- Exposure:** You can set the camera exposure value of the front or cabin camera of the car separately. The default is +0.0.
- REC Status Light:** Default setting is ON. You can choose to turn on/off the recording status light.
- HDR:** The default setting is on. You can adjust the HDR on or off of the front and cabin cameras separately.
- HDR Timer:** Default setting is Off. When it's on, you can choose when HDR is automatically turned on and off.
- Rotate Display:** Default setting is Off. You can set the video screens of the front camera and cockpit camera to flip up and down (180 degrees) separately.
- Mirror:** Default setting is ON. When it is on, the screen of the cabin camera is displayed in mirror mode.
- Number Plate:** Select the number or letter to be set. After setting, your license plate number can be displayed in the recorded video.
- Stamp:** Enable or disable the watermark stamp on video and photos. The watermark stamp includes time and date label, VANTRUE label, license plate number, GPS location information, and speed label. All enabled by default.
- Time Lapse:** The default value is disabled. You can choose to enable 1FPS/5FPS/10FPS/15FPS.
- Parking Mode:** You can choose the parking mode you need. There are Collision Detection / Motion Detection / Low Bit Rate Recording / Low Frame Rate Recording / Off. Default setting is Off.

**-Parking monitoring settings:** this function includes detection lens settings, parking micro-light night vision, motion detection area settings, parking collision detection mode adjustment.

**-LTE Settings:** This feature needs to be used after N4 Pro S dash cam connected to LTE module. Default real-time push message, default use of 300MB data traffic per day, crash video traffic-saving upload. Users can change the settings as needed.

**-Mileage statistics:** Default setting is On. Turn on this function, the dash cam will record the mileage information, and you can export the mileage statistics through the mileage statistics function in Vantrue APP.

**-GPS Settings:** GPS is enabled by default. GPS ON/OFF settings, speed unit settings, and GPS information are all set here.

## 2.6.2 System Setup

**-Language:** Available languages are English/Français/Español/Deutsch/Italiano/简体中文/русский/日本語/Polski/한국어/Türkçe/Čeština.

**-Wi-Fi:** You can choose Wi-Fi mode, view Wi-Fi information, etc.

The Wi-Fi auto-on option means that the Wi-Fi will automatically turn off after 10 minutes of turning on. If you choose on, Wi-Fi will always stay on; if you choose off, Wi-Fi needs to be turned on manually.

Wi-Fi mode is 5G by default.

Wi-Fi information displays the Wi-Fi name and Wi-Fi password.

**-Voice Control:** The default sensitivity is Standard. Voice commands can be recognized after the option is turned on. You can choose options such as low sensitivity/high sensitivity/standard/off.

**-Voice Content:** You can use different commands to remote control the camera to work.

**-Format SD Card:** Format all data on the memory card.

**-Format Reminder Setup:** Select the reminder options: 15 Days, 1 Month, and Off. Default is off.

To prevent you from forgetting to format the memory card regularly, we have added a format reminder time setting. You can choose to be reminded after 15 days or 1 month, and calculate 15 days or 1 month from the set date. When the time is up, you can choose "OK" to format, or choose "Next."

Note: If you changing the format reminder option, the timing will restart as soon as the option is changed.

**-Date & Time:** There are two ways to set the time and date:

① GPS auto update: GPS will update the time automatically when it is turned on by default. GPS auto update date and time is based on the time zone where you set, so you need to choose the correct time zone first;

② Manual set date/time: Turn off GPS auto update and set date and time manually.

Summer/Winter time auto switch: The default setting is off. When turned on, it will switch automatically according to the daylight saving time and winter time dates.

\*This feature is only available in North America, if used in other regions, it may cause time errors.

The date format and time zone settings are also set in this menu.

**-Auto LCD Off:** Set the time to automatically turn off the LCD display after no operation.

If you set the Auto LCD Off to 3 min, the camera's LCD screen will auto light off after 3 min but recording will continue. If the setup is Off, the screen will not turn off. You can choose the options among 30s, 1Min, 3Min and OFF.

**-LCD Brightness:** The default setting is Auto with High, Medium and Low options. Auto mode is where the brightness will drop to 50% after 10 minutes of no operation by the main camera.

**-Device Sound:** Set the volume of the device. The default volume level is 2, the lowest is 0, and the highest is 5.

**-Warning Tone:** According to different situations, the dash cam is set with 5 kinds of prompt tones, which are power-on/off sound, keys sound, file locked sound, format sound, and abnormal stop recording reminder. All prompt tones are turned on by default.

**-Frequency:** Different countries have different frequencies. In order to avoid affecting the video, you can choose 50Hz or 60Hz frequency according to different regions.

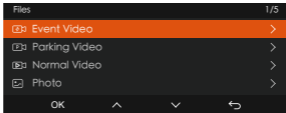
**-System Info:** Check the current model, firmware version, and the VANTRUE official website.

**-Certification Info:** You can view the certification information of N4 Pro S dash cam.

**-Default Settings:** Reset the device back to factory settings.

### 2.6.3 Files

Review the video and photo files recorded by the camera.



**-Event:** Critical event videos detected by G-Sensor activity or manually locked by user, and all vibration locking video in parking monitor mode.

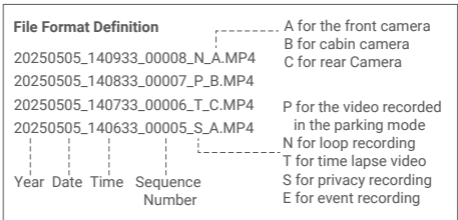
**-Files in Parking Mode:** It contains parking mode videos including video recorded in motion detection, low framerate recording, and low bitrate recording modes.

**-Normal:** This folder saves loop recording video and time-lapse video, and private files..

**-Photo:** Photos files.

**-All Files:** All the videos and photos recorded.

Note: The suffix A represents the files recorded by the Front camera, the suffix B represents the files recorded by the Cabin camera.



### 3. Specifications & FAQs

#### 3.1 Specifications

Model	N4 Pro S
Chips	Novatek high-performance processor
Image Sensor	Sony Sensor
G-sensor	3-Axis G-sensor
WiFi	Built-in 2.4GHz&5GHz
Screen	3.19" IPS Screen
Camera Angle	Front: 155° wide viewing angle; Cabin: 160° wide viewing angle Rear: 165° wide viewing angle
Aperture	Front: F/1.8 big aperture Cabin: F/1.8 big aperture Rear: F/1.8 big aperture
Languages	English / Français / Español / Deutsch / Italiano / 简体中文 / русский / 日本語 / Polski / 한국어 / Türkçe / Čeština
Highest Video Resolution	Front + Cabin+Rear: 2160P+1080P+1440P 30FPS Front + Cabin: 2160P+1080P 30FPS Front + Rear: 2160P+1440P 30FPS Single Front Recording Mode: 3840x2160P 30FPS
Video File Format	MP4
Picture File Format	JPEG
Audio	Built-in microphone and speaker

Memory Storage	External: 32GB-1TB Micro SD Card, U3, Class 10(not included in the package)
USB Port	Type C
Power Source	Built-in super capacitor
Supply voltage current	DC 5V 3A
Power	7W
Working Temperature	-4°F to 140°F(-20°C to 60°C)
Storage Temperature	-13°F to 158°F(-25°C to 70°C)

### 3.2 Safety Warnings

- This product is an auxiliary device for the purpose of recording exterior images of vehicles, and some functions may not be supported due to different driving and vehicle environments.
- Firmware upgrade will be carried out from time to time to further improve the product, please pay attention to the official notice of VANTRUE according to the specific upgrade.
- This product can record and save images of vehicle accidents, but it does not guarantee that all accident images can be recorded. The image may not be recorded in a special folder because the crash sensor cannot be activated for minor crashes.
- Be sure to turn off the power when inserting or removing the memory card.
- For stable use of the product, please format the memory card at least once a month.

- Generally, memory cards have a life span, and long-term use of memory cards may result in data not being saved. In this case, it is recommended to purchase a new memory card for use. If the data is destroyed due to the long-term use of the memory card, the company will not be held responsible.
- Do not install or operate this product while the vehicle is running.
- Do not subject the product to strong shocks or vibrations, which may damage the product and cause malfunction or inoperability.
- Do not use chemical solvents or cleaning agents to clean the product.
- The ambient temperature range for normal use of this device is -20 degrees Celsius to 60 degrees Celsius. Exceeding this ambient temperature range may cause the product to malfunction.
- Do not place the product in an open flame. Do not use the product in high temperature and high humidity areas, as this may cause electric shock, short circuit, and other hazards and damage the product.
- It is forbidden to disassemble or modify the car charger by yourself, or use a short-circuit car charger, otherwise it will cause personal injury, electric shock, fire and other dangers or damage the product.
- Do not disassemble or modify this product to avoid damaging the camera and generating heat and causing fire.

### 3.3 FAQs

- ① Camera can't be turned on: Please check the power connection is good, as well as check if the power cord or car charger is damaged.
- ② Memory card error: Make sure you use a compatible Micro SD card, format the memory card to FAT32 format, and format the memory card regularly.
- ③ Video recording interruption or jamming: Please check the rate of the memory card, we recommend using U3/A2 grade memory card.
- ④ Poor night vision: Please clean the lens as well as the car windshield and turn on HDR mode.
- ⑤ GPS can not be positioned: Make sure to use the camera in outdoor open area to avoid signal shielding interference.
- ⑥ Wi-Fi connection failure: Please restart the device and make sure the Wi-Fi function of the car camera is in the pending connection state. Also try to switch the Wi-Fi band (5GHz/2.4GHz) of the car camera and reconnect.
- ⑦ Button malfunction: Please check the firmware version of the device and reset the camera.

If the problem is still not solved after troubleshooting, please contact VANTRUE official customer service for further assistance.

## 4. Warranty & Support

### Warranty

The VANTRUE® N4 Pro S Dash Cam comes with a full 12 months warranty. If you register your product on our official site ([www.vantrue.net/register](http://www.vantrue.net/register)), you can extend the warranty to 18 months.

### Support new

If you have any questions about the product, please feel free to contact us at [support@vantrue.net](mailto:support@vantrue.net), or leave us a message through the instant chat box: [www.vantrue.net](http://www.vantrue.net), or open the VANTRUE APP, and find it in the FAQ on the "Me" page Answer.

### Your opinion matters

VANTRUE® is firmly committed to always improving our products, services, and user experience. If you have any thoughts on how we can do even better, we welcome your constructive feedback and suggestions. Connect with us today at [support@vantrue.net](mailto:support@vantrue.net).

**VANTRUE**  
truly driven.



CE



IC



FC

✓  
RoHS



[www.vantrue.com](http://www.vantrue.com)

Made in China