

VEVOR[®]

TOUGH TOOLS, HALF PRICE

Technical Support and E-Warranty Certificate www.vevor.com/support

SANDBOX

MODEL:BXSB120

We continue to be committed to provide you tools with competitive price. "Save Half", "Half Price" or any other similar expressions used by us only represents an estimate of savings you might benefit from buying certain tools with us compared to the major top brands and does not necessarily mean to cover all categories of tools offered by us. You are kindly reminded to verify carefully when you are placing an order with us if you are actually saving half in comparison with the top major brands.

VEVOR®

TOUGH TOOLS, HALF PRICE

SANDBOX

MODEL: BXS120



NEED HELP? CONTACT US!

Have product questions? Need technical support? Please feel free to contact us:

Technical Support and E-Warranty Certificate
www.vevor.com/support

This is the original instruction, please read all manual instructions carefully before operating. VEVOR reserves a clear interpretation of our user manual. The appearance of the product shall be subject to the product you received. Please forgive us that we won't inform you again if there are any technology or software updates on our product.

SAFETY INSTRUCTIONS

WARNING:

1. Please read all instructions carefully and keep it for future reference.
2. Assembled only by adults. Children should use this product under the parental supervision.
3. Keep all small parts and packaging materials for this product away from babies and children, otherwise they may pose a choking hazard.
4. Lack of attachment may cause a risk of tipping.
5. Do not overload.

Warning for Assembly:

1. Remove all packaging, separate and count all parts and hardware.
2. Read through each step carefully and follow the proper order.
3. We recommend that, where possible, all items are assembled near the area in which they will be placed in use, to avoid moving the product unnecessarily once assembled.
4. Ensure a secure surface during installation, and place the product always on a flat, steady and stable surface.

MODEL AND PARAMETERS

Model	BXSB120
Age of application	3-12 years
Max. bearing capacity	110lbs(50kg)/Each seat
Appearance	Square
Product Size	123.5*123.5*30cm
Color	Brown
Materials	Plastic

PARTS LIST AND INSTALLATION

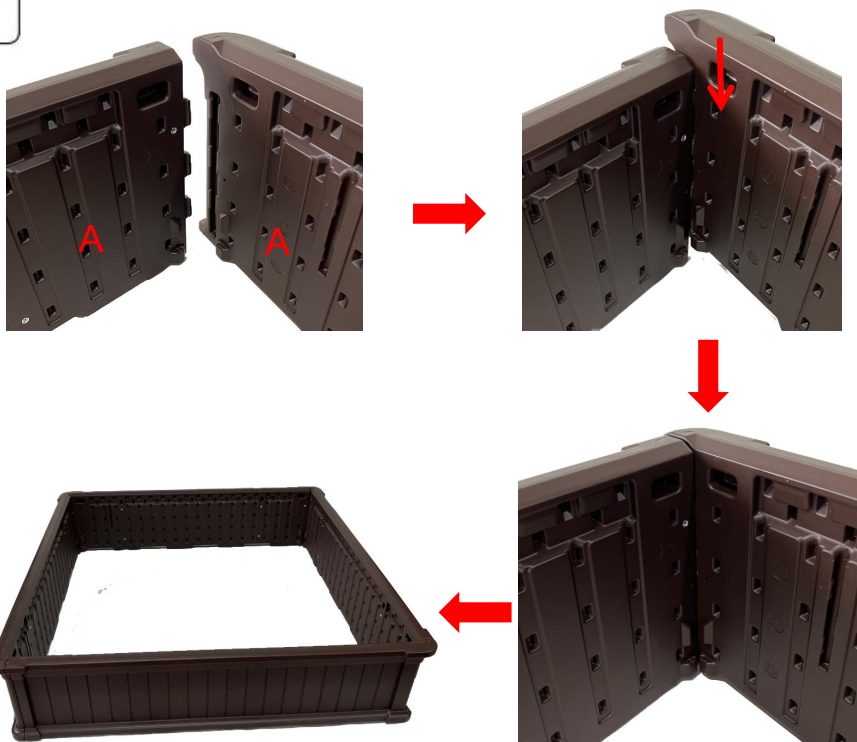
NOTE: Please check you have all the parts as shown in the part list.

	
<p style="text-align: center;">A. Panel x4</p>	<p style="text-align: center;">B. Seat x4</p>
	
<p style="text-align: center;">C. Long Bracket x8</p>	<p style="text-align: center;">D. Short Bracket x4</p>
	
<p style="text-align: center;">E. Corner Clip x4</p>	<p style="text-align: center;">F. Hook and Loop Tape x20</p>
	
<p style="text-align: center;">G. Liner x1</p>	<p style="text-align: center;">H. Cover x1</p>
	
<p style="text-align: center;">I. Bolts x32</p>	<p style="text-align: center;">J. Washer x32</p>
	
<p>K. User Manual x1</p>	

Installation:

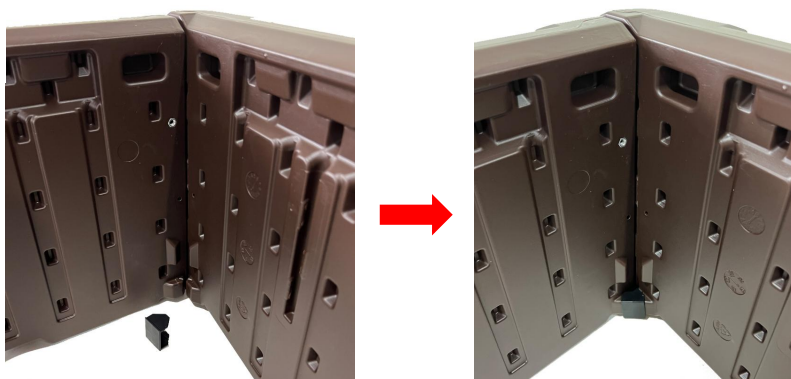
STEP 1: Insert the tabs in the end of a Panel into the slot in a second Panel. Slide the the second Panel downward.

1



STEP 2: Snap the Corner Clips inside all 4 corners.

2



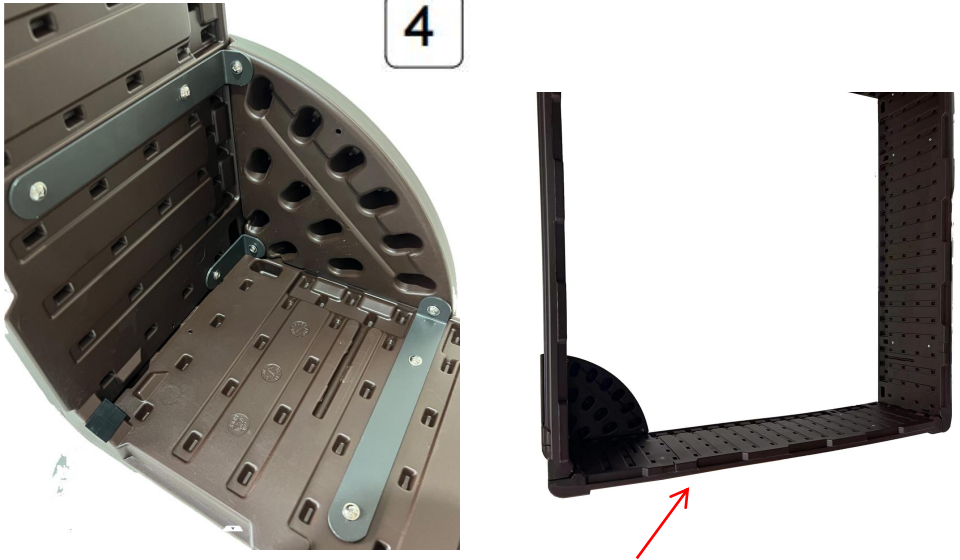
STEP 3: Screw the "L" metal piece into the Panel.
Repeat the same step on the another 3 corners.

3



STEP 4: Line up all the seat bracket holes and tighten all bolts.
Repeat the same step on the another 3 corners.

4



NOTE: Stand the product on its side and install the bolts.

STEP 5: Place the liner in the Sandbox first before applying the hook and loop tape to the Sandbox sides.

5



STEP 6: Cover the sandbox.

6



MAINTENANCE

1. Store away from direct sunlight.
2. Check the reliability of the parts before use.

Manufacturer: NINGBO BOXING LEISURE PRODUCTS CO.,LTD

**Address: NO.91, SHUNYU ROAD, YANGMING STREET, YUYAO CITY,
ZHEJIANG PROVINCE, CHINA**

**Imported to AUS: SIHAO PTY LTD. 1 ROKEVA STREET EASTWOOD NSW
2122 Australia**

**Imported to USA: Sanven Technology Ltd. Suite 250, 9166 Anaheim Place,
Rancho Cucamonga, CA 91730**

UK	REP
-----------	------------

E-CrossStu GmbH
Mainzer Landstr.69, 60329 Frankfurt am Main.

EC	REP
-----------	------------

YH CONSULTING LIMITED.
C/O YH Consulting Limited Office 147, Centurion House,
London Road, Staines-upon-Thames, Surrey, TW18 4AX

VEVOR[®]

TOUGH TOOLS, HALF PRICE

Technical Support and E-Warranty Certificate
www.vevor.com/support

VEVOR[®]

TOUGH TOOLS, HALF PRICE

Supporto tecnico e certificato di garanzia elettronica www.vevor.com/support

SABBIA

MODELLO:BXSB120

We continue to be committed to provide you tools with competitive price.

"Save Half", "Half Price" or any other similar expressions used by us only represents an estimate of savings you might benefit from buying certain tools with us compared to the major top brands and does not necessarily mean to cover all categories of tools offered by us. You are kindly reminded to verify carefully when you are placing an order with us if you are actually saving half in comparison with the top major brands.

VEVOR®

TOUGH TOOLS, HALF PRICE

SANDBOX

MODELLO: BXS120



NEED HELP? CONTACT US!

Have product questions? Need technical support? Please feel free to contact us:

Technical Support and E-Warranty Certificate
www.vevor.com/support

This is the original instruction, please read all manual instructions carefully before operating. VEVOR reserves a clear interpretation of our user manual. The appearance of the product shall be subject to the product you received. Please forgive us that we won't inform you again if there are any technology or software updates on our product.

SAFETY INSTRUCTIONS

AVVERTIMENTO:

6. Si prega di leggere attentamente tutte le istruzioni e di conservarle per riferimento futuro.
7. Assemblato solo da adulti . I bambini dovrebbero utilizzare questo prodotto sotto la supervisione dei genitori.
8. Tenere tutte le piccole parti e i materiali di imballaggio di questo prodotto lontano dalla portata di neonati e bambini, altrimenti potrebbero rappresentare un rischio di soffocamento.
9. La mancanza di fissaggio può causare il rischio di ribaltamento.
10. Non sovraccaricare .

Avvertenza per il montaggio:

5. Rimuovere tutto l'imballaggio, separare e contare tutte le parti e l'hardware.
6. Leggi attentamente ogni passaggio e segui l'ordine corretto.
7. Si consiglia, ove possibile, di montare tutti gli articoli in prossimità dell'area in cui verranno utilizzati, per evitare di spostare inutilmente il prodotto una volta montato.
8. Garantire una superficie sicura durante l'installazione e posizionare il prodotto sempre su una superficie piana, stabile e stabile.

MODEL AND PARAMETERS

Modello	BXSB120
Età di applicazione	3-12 anni
Massimo . capacità portante	11 0 libbre (50 kg) /Ogni posto
Aspetto	Piazza
Taglia del prodotto	123,5*123,5*30 cm

Colore	Marrone
Materiali	Plastica

PARTS LIST AND INSTALLATION

NOTA: verificare di avere tutte le parti come mostrato nell'elenco delle parti.

	
L. Pannello x 4	M. Posto x 4
	
N. Staffa lunga x 8	O. Staffa corta x 4
	
P. Clip ad angolo x4	Q. Nastro a strappo x20
	
R. Fodera x 1	S. Copertina x 1
	
T. Bulloni x 32	U. Rondella x 32

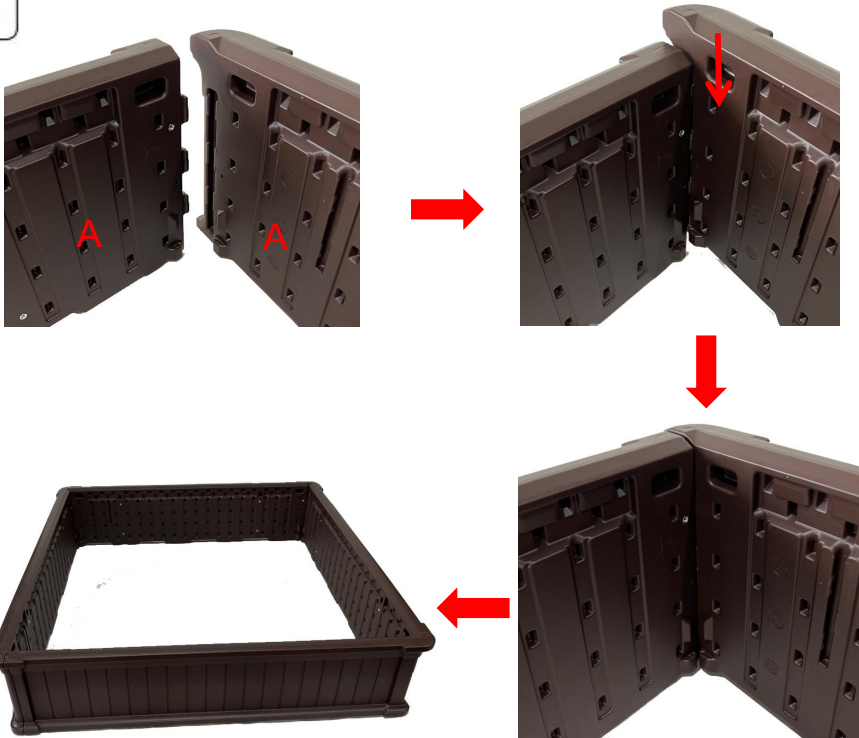


V. Manuale utentex1

Installazione:

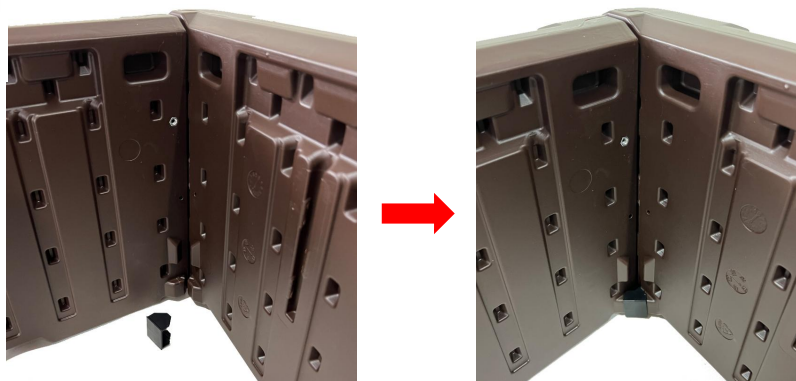
FASE 1: inserire le linguette all'estremità di un pannello nello slot di un secondo pannello. Far scorrere il secondo pannello verso il basso.

1



FASE 2: aggancia le clip angolari all'interno di tutti e 4 gli angoli.

2



FASE 3: Avvitare il pezzo di metallo a "L" nel pannello.
Ripeti lo stesso passaggio sugli altri 3 angoli.

3



FASE 4: Allineare tutti i fori della staffa del sedile e serrare tutti i bulloni.
Ripeti lo stesso passaggio sugli altri 3 angoli.

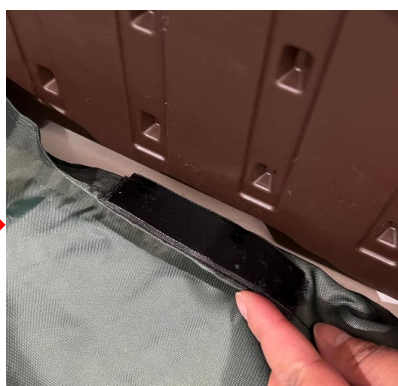
4

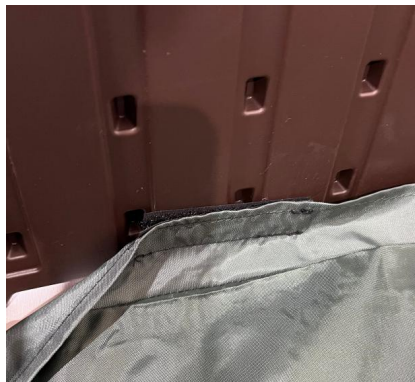


NOTA: posizionare il prodotto su un lato e installare i bulloni.

FASE 5: posizionare prima il rivestimento nella sabbiera prima di applicare il nastro a strappo ai lati della sabbiera.

5





PASSO 6: Coprire la sabbiera.

6



MAINTENANCE

3. Conservare lontano dalla luce solare diretta .
4. Verificare l'affidabilità delle parti prima dell'uso.

Produttore: NINGBO BOXING LEISURE PRODUCTS CO.,LTD

**Indirizzo: NO.91, SHUNYU ROAD, YANGMING STREET, YUYAO CITY,
PROVINCIA DI ZHEJIANG, CINA**

**Importato in AUS: SIHAO PTY LTD. 1 ROKEVA STREET EASTWOOD NSW
2122 Australia**

**Importato negli Stati Uniti: Sanven Technology Ltd. Suite 250, 9166 Anaheim
Place, Rancho Cucamonga, CA 91730**

UK	REP
-----------	------------

E-CrossStu GmbH
Mainzer Landstr.69, 60329 Frankfurt am Main.

EC	REP
-----------	------------

YH CONSULTING LIMITED.
C/O YH Consulting Limited Office 147, Centurion House,
London Road, Staines-upon-Thames, Surrey, TW18 4AX

VEVOR[®]
TOUGH TOOLS, HALF PRICE

Tecnico Supporto e certificato di garanzia elettronica
www.vevor.com/support

VEVOR[®]

TOUGH TOOLS, HALF PRICE

Wsparcie techniczne i certyfikat e-gwarancji www.vevor.com/support

PIASKOWNICA

MODEL: BXSB120

We continue to be committed to provide you tools with competitive price.

"Save Half", "Half Price" or any other similar expressions used by us only represents an estimate of savings you might benefit from buying certain tools with us compared to the major top brands and does not necessarily mean to cover all categories of tools offered by us. You are kindly reminded to verify carefully when you are placing an order with us if you are actually saving half in comparison with the top major brands.

VEVOR®

TOUGH TOOLS, HALF PRICE

SANDBOX

MODEL: BXS120



NEED HELP? CONTACT US!

Have product questions? Need technical support? Please feel free to contact us:

Technical Support and E-Warranty Certificate
www.vevor.com/support

This is the original instruction, please read all manual instructions carefully before operating. VEVOR reserves a clear interpretation of our user manual. The appearance of the product shall be subject to the product you received. Please forgive us that we won't inform you again if there are any technology or software updates on our product.

SAFETY INSTRUCTIONS

OSTRZEŻENIE:

11. Przeczytaj uważnie wszystkie instrukcje i zachowaj je na przyszłość.
12. Montowane wyłącznie przez osoby dorosłe . Dzieci powinny używać tego produktu pod nadzorem rodziców.
13. Wszystkie małe części i materiały opakowaniowe tego produktu należy przechowywać z dala od niemowląt i dzieci, w przeciwnym razie mogą stwarzać ryzyko zadławienia.
14. Brak mocowania może spowodować ryzyko przewrócenia się.
15. Nie przeciążaj .

Ostrzeżenie dotyczące montażu:

9. Usuń całe opakowanie, oddziel i policz wszystkie części i sprzęt.
10. Przeczytaj uważnie każdy krok i postępuj zgodnie z odpowiednią kolejnością.
11. Zalecamy, aby, jeśli to możliwe, zmontować wszystkie elementy w pobliżu miejsca, w którym będą używane, aby uniknąć niepotrzebnego przemieszczania produktu po złożeniu.
12. Podczas instalacji należy zapewnić bezpieczną powierzchnię i umieszczać produkt zawsze na płaskiej, stabilnej powierzchni.

MODEL AND PARAMETERS

Model	BXSB120
Wiek stosowania	3-12 lat
Maks . nośność	11 0 funtów (50 kg) /każde
Wygląd	Kwadrat
Rozmiar produktu	123,5*123,5*30 cm

Kolor	brązowy
Materiały	Plastikowy

PARTS LIST AND INSTALLATION

UWAGA: Sprawdź, czy posiadasz wszystkie części wymienione na liście części.

	
W. Panel x 4	X. Miejsce x 4
	
Y. Długi wspornik x 8	Z. Krótki wspornik x 4
	
AA. Klip narożny x 4	AB. Taśma z haczykiem i pętelką x 20
	
AC. Wkładka x 1	AD. Osłona x 1
	

AE. Śruby x 32

AF. Podkładka x 32



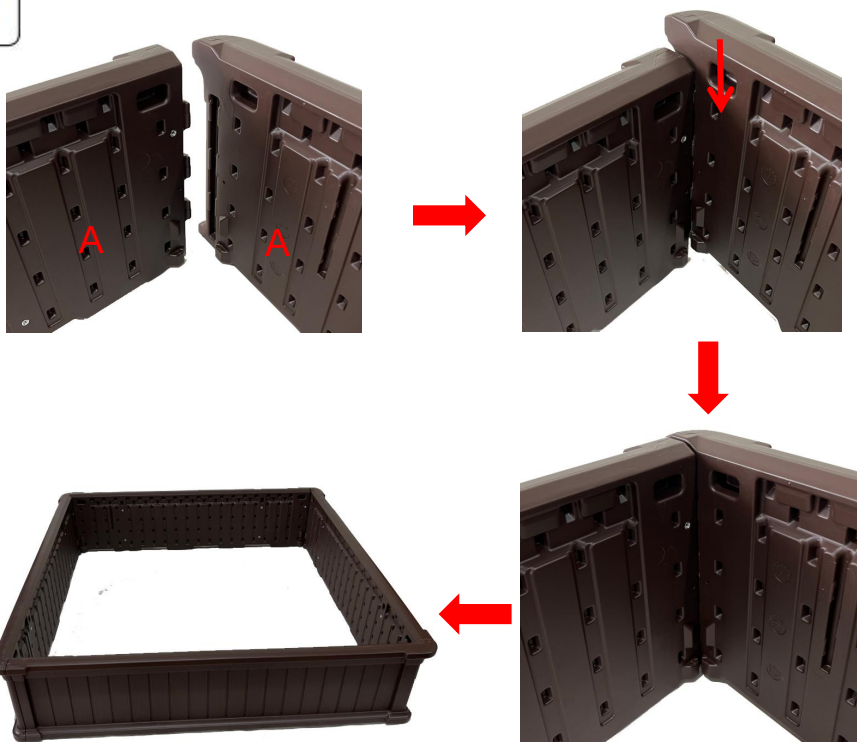
AG. Instrukcja obsługi x1

Instalacja:

KROK 1: Włóż wypustki na końcu panelu do szczeliny w drugim panelu.

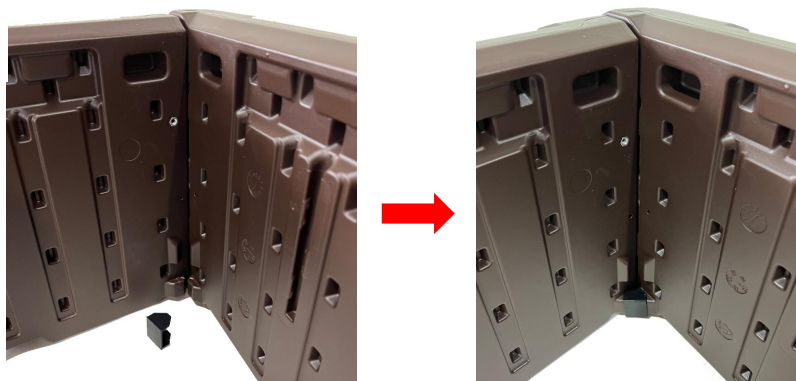
Przesuń drugi panel w dół.

1



KROK 2: Zatrzaśnij klipsy narożne we wszystkich 4 rogach.

2



KROK 3: Przykręć metalowy element „L” do panelu.

Powtórz ten sam krok w kolejnych 3 rogach.

3



KROK 4: Zrównaj wszystkie otwory wspornika siodła i dokręć wszystkie śruby.

Powtórz ten sam krok w kolejnych 3 rogach.

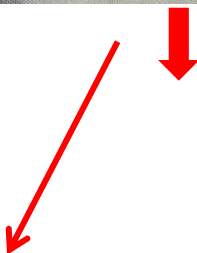
4



UWAGA: Postaw produkt na boku i przykręć śruby.

KROK 5: Najpierw umieść wyściółkę w piaskownicy, a następnie przymocuj taśmę z rzepem do boków piaskownicy.

5





KROK 6: Przykryj piaskownicę.

6



MAINTENANCE

5. Przechowywać z dala od bezpośredniego światła słonecznego .
6. użyciem sprawdź niezawodność części .

Producent: NINGBO BOXING LEISURE PRODUCTS CO.,LTD

**Adres: NR 91, SHUNYU ROAD, YANGMING STREET, MIASTO YUYAO,
PROWINCJA ZHEJIANG, CHINY**

**Import do AUS: SIHAO PTY LTD. 1 ROKEVA STREET EASTWOOD NSW 2122
Australia**

**Import do USA: Sanven Technology Ltd. Suite 250, 9166 Anaheim Place,
Rancho Cucamonga, CA 91730**

UK	REP
-----------	------------

E-CrossStu GmbH
Mainzer Landstr.69, 60329 Frankfurt am Main.

EC	REP
-----------	------------

YH CONSULTING LIMITED.
C/O YH Consulting Limited Office 147, Centurion House,
London Road, Staines-upon-Thames, Surrey, TW18 4AX

VEVOR[®]

TOUGH TOOLS, HALF PRICE

Techniczny Certyfikat wsparcia i e-gwarancji

www.vevor.com/support

VEVOR[®]

TOUGH TOOLS, HALF PRICE

Technischer Support und E-Garantie-zertifikat www.vevor.com/support

SANDKASTEN

MODELL: BXSB120

We continue to be committed to provide you tools with competitive price. "Save Half", "Half Price" or any other similar expressions used by us only represents an estimate of savings you might benefit from buying certain tools with us compared to the major top brands and does not necessarily mean to cover all categories of tools offered by us. You are kindly reminded to verify carefully when you are placing an order with us if you are actually saving half in comparison with the top major brands.

VEVOR®

TOUGH TOOLS, HALF PRICE

SANDBOX

MODELL: BXS120



NEED HELP? CONTACT US!

Have product questions? Need technical support? Please feel free to contact us:

Technical Support and E-Warranty Certificate
www.vevor.com/support

This is the original instruction, please read all manual instructions carefully before operating. VEVOR reserves a clear interpretation of our user manual. The appearance of the product shall be subject to the product you received. Please forgive us that we won't inform you again if there are any technology or software updates on our product.

SAFETY INSTRUCTIONS

WARNUNG:

16. Bitte lesen Sie alle Anweisungen sorgfältig durch und bewahren Sie sie zum späteren Nachschlagen auf.
17. Zusammenbau nur durch Erwachsene . Kinder sollten dieses Produkt unter Aufsicht der Eltern verwenden.
18. Halten Sie alle Kleinteile und Verpackungsmaterialien dieses Produkts von Babys und Kindern fern, da sie sonst eine Erstickungsgefahr darstellen können.
19. Fehlende Befestigung kann zu Kippgefahr führen.
20. Nicht überladen .

Warnung zur Montage:

13. Entfernen Sie sämtliche Verpackungen, trennen und zählen Sie alle Teile und Hardware.
14. Lesen Sie jeden Schritt sorgfältig durch und befolgen Sie die richtige Reihenfolge.
15. Wir empfehlen, alle Artikel nach Möglichkeit in der Nähe des Einsatzbereichs zu montieren, um zu vermeiden, dass das Produkt nach dem Zusammenbau unnötig bewegt wird.
16. Sorgen Sie bei der Installation für einen sicheren Untergrund und stellen Sie das Produkt immer auf eine ebene, stabile und stabile Oberfläche.

MODEL AND PARAMETERS




Modell	BXSB120
Alter der Bewerbung	3-12 Jahre
Max . Tragfähigkeit	11 0 Pfund (50 kg) /Jeder Sitz
Aussehen	Quadrat

Produktgröße	123,5 * 123,5 * 30 cm
Farbe	Braun
Materialien	Plastik

PARTS LIST AND INSTALLATION

HINWEIS: Bitte überprüfen Sie, ob alle in der Teileliste aufgeführten Teile vorhanden sind.

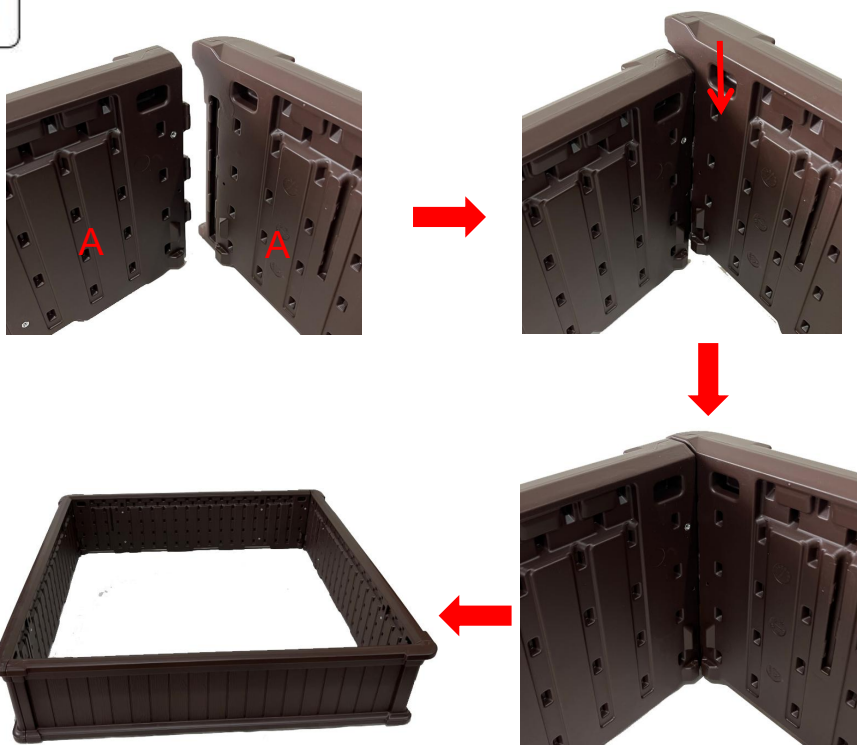
	
AH. Panel x 4	AI. Sitz x 4
	
AJ. Lange Halterung x 8	AK. Kurze Halterung x 4
	
AL. Eckclip x 4	AM. Klettband x 20
	
AN. Liner * 1	AO. Abdeckung * 1

	
<p>AP. Schrauben x 32</p>	<p>AQ. Unterlegscheibe x 32</p>
	
<p>AR. Benutzerhandbuch x1</p>	

Installation:

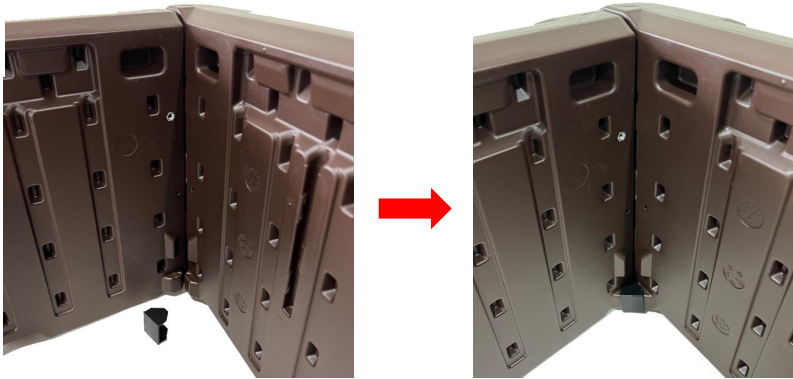
SCHRITT 1: Führen Sie die Laschen am Ende eines Panels in den Schlitz eines zweiten Panels ein. Schieben Sie das zweite Panel nach unten.

1



SCHRITT 2: Lassen Sie die Eckklammern in allen vier Ecken einrasten.

2



SCHRITT 3: Schrauben Sie das „L“-Metallstück in die Platte.

Wiederholen Sie den gleichen Schritt an den weiteren 3 Ecken.

3



SCHRITT 4: Richten Sie alle Löcher der Sitzhalterung aus und ziehen Sie alle Schrauben fest.

Wiederholen Sie den gleichen Schritt an den weiteren 3 Ecken.

4



HINWEIS: Stellen Sie das Produkt auf die Seite und bringen Sie die Schrauben an.

SCHRITT 5: Legen Sie zuerst die Folie in den Sandkasten, bevor Sie das Klettband an den Seiten des Sandkastens anbringen.

5





SCHRITT 6: Decken Sie den Sandkasten ab.

6



MAINTENANCE

7. Vor direkter Sonneneinstrahlung schützen .
8. Überprüfen Sie vor der Verwendung die Zuverlässigkeit der Teile .

Hersteller: NINGBO BOXING LEISURE PRODUCTS CO.,LTD

**Adresse: Nr. 91, SHUNYU ROAD, YANGMING STREET, YUYAO CITY,
ZHEJIANG PROVINZ, CHINA**

**Importiert nach AUS: SIHAO PTY LTD. 1 ROKEVA STREET EASTWOOD NSW
2122 Australien**

**In die USA importiert: Sanven Technology Ltd. Suite 250, 9166 Anaheim
Place, Rancho Cucamonga, CA 91730**

UK	REP
-----------	------------

E-CrossStu GmbH
Mainzer Landstr.69, 60329 Frankfurt am Main.

EC	REP
-----------	------------

YH CONSULTING LIMITED.
C/O YH Consulting Limited Office 147, Centurion House,
London Road, Staines-upon-Thames, Surrey, TW18 4AX

VEVOR[®]
TOUGH TOOLS, HALF PRICE

Technisch Support- und E-Garantiezertifikat
www.vevor.com/support

VEVOR[®]

TOUGH TOOLS, HALF PRICE

Assistance technique et certificat de garantie électronique www.vevor.com/support

BAC À SABLE

MODÈLE: BXS120

We continue to be committed to provide you tools with competitive price.

"Save Half", "Half Price" or any other similar expressions used by us only represents an estimate of savings you might benefit from buying certain tools with us compared to the major top brands and does not necessarily mean to cover all categories of tools offered by us. You are kindly reminded to verify carefully when you are placing an order with us if you are actually saving half in comparison with the top major brands.

VEVOR®

TOUGH TOOLS, HALF PRICE

SANDBOX

MODÈLE : BXS B120



NEED HELP? CONTACT US!

Have product questions? Need technical support? Please feel free to contact us:

Technical Support and E-Warranty Certificate
www.vevor.com/support

This is the original instruction, please read all manual instructions carefully before operating. VEVOR reserves a clear interpretation of our user manual. The appearance of the product shall be subject to the product you received. Please forgive us that we won't inform you again if there are any technology or software updates on our product.

SAFETY INSTRUCTIONS

AVERTISSEMENT:

21. Veuillez lire attentivement toutes les instructions et les conserver pour référence future.
22. Assemblé uniquement par des adultes . Les enfants doivent utiliser ce produit sous la surveillance parentale.
23. Gardez toutes les petites pièces et matériaux d'emballage de ce produit hors de portée des bébés et des enfants, sinon ils pourraient présenter un risque d'étouffement.
24. Un manque de fixation peut entraîner un risque de basculement.
25. Ne surchargez pas .

Avertissement pour l'assemblage :

17. Retirez tous les emballages, séparez et comptez toutes les pièces et le matériel.
18. Lisez attentivement chaque étape et suivez l'ordre approprié.
19. Nous recommandons que, dans la mesure du possible, tous les articles soient assemblés à proximité de la zone dans laquelle ils seront utilisés, afin d'éviter de déplacer inutilement le produit une fois assemblé.
20. Assurez-vous d'avoir une surface sûre lors de l'installation et placez toujours le produit sur une surface plane, stable et stable.


MODEL AND PARAMETERS

Modèle	BXSB120
Âge de candidature	3-12 ans
Max . capacité portante	11 0lbs(50 kg) /Chaque siège
Apparence	Carré
Taille du produit	123,5*123,5*30cm

Couleur	Brun
Matériaux	Plastique

PARTS LIST AND INSTALLATION

REMARQUE : Veuillez vérifier que vous disposez de toutes les pièces indiquées dans la liste des pièces.

	
AS. Panneau x 4	AT. Siège x 4
	
AU. Support long x 8	AV. Support court x 4
	
AW. Clip d'angle x4	AX. Bande auto-agrippante x20
	
AY. Doublure x 1	AZ. Couverture x 1
	

BA. Boulons x 32

BB. Rondelle x 32

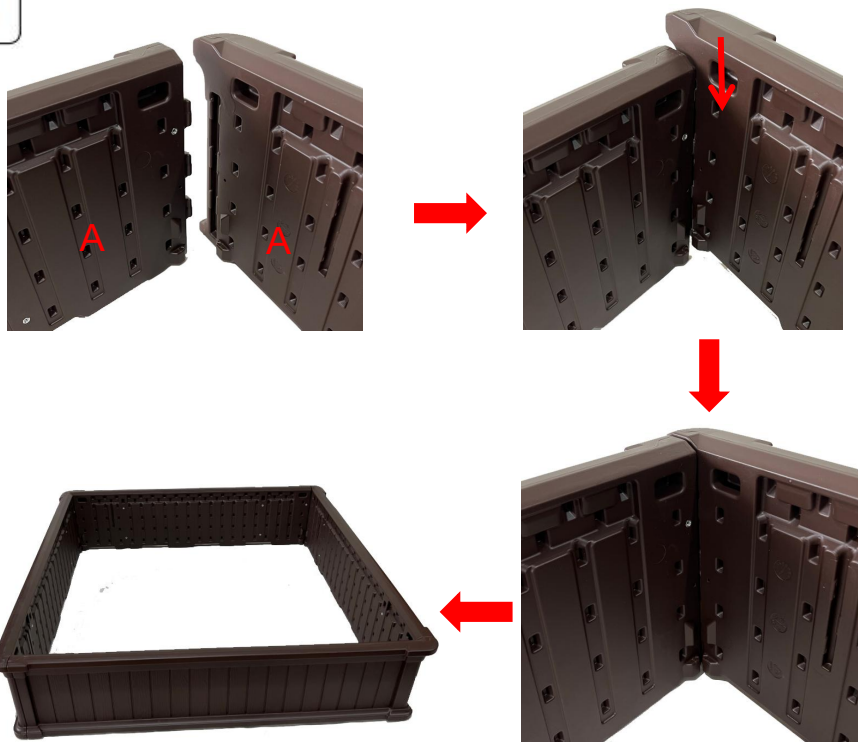


BC. Manuel d'utilisation x1

Installation:

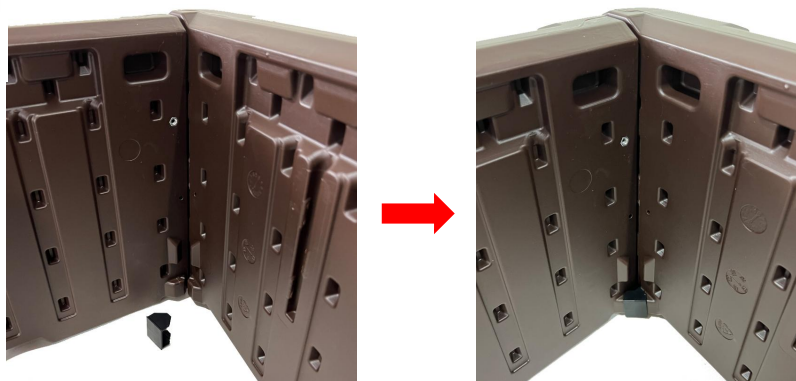
ÉTAPE 1 : Insérez les languettes à l'extrémité d'un panneau dans la fente d'un deuxième panneau. Faites glisser le deuxième panneau vers le bas.

1



ÉTAPE 2 : Enclenchez les clips de coin à l'intérieur des 4 coins.

2



ÉTAPE 3 : Vissez la pièce métallique en « L » dans le panneau.
Répétez la même étape sur les 3 autres coins.

3



ÉTAPE 4 : Alignez tous les trous du support de siège et serrez tous les boulons.
Répétez la même étape sur les 3 autres coins.

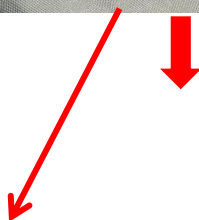
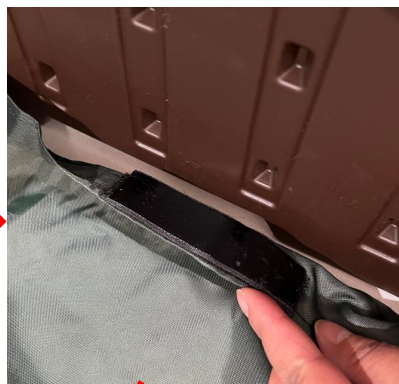
4



REMARQUE : placez le produit sur le côté et installez les boulons.

ÉTAPE 5 : Placez d'abord la doublure dans le bac à sable avant d'appliquer le ruban adhésif à boucles et crochets sur les côtés du bac à sable.

5





ÉTAPE 6 : Couvrez le bac à sable.

6



MAINTENANCE

9. Entreposer à l'écart de la lumière du soleil .
10. Vérifiez la fiabilité des pièces avant utilisation.

Fabricant: NINGBO BOXING LEISURE PRODUCTS CO., LTD

**Adresse : NO.91, ROUTE SHUNYU, RUE YANGMING, VILLE DE YUYAO,
PROVINCE DE ZHEJIANG, CHINE**

**Importé en Australie : SIHAO PTY LTD. 1 ROKEVA STREETASTWOOD NSW
2122 Australie**

**Importé aux États-Unis : Sanven Technology Ltd. Suite 250, 9166 Anaheim
Place, Rancho Cucamonga, CA 91730**

UK	REP
-----------	------------

E-CrossStu GmbH
Mainzer Landstr.69, 60329 Frankfurt am Main.

EC	REP
-----------	------------

YH CONSULTING LIMITED.
C/O YH Consulting Limited Office 147, Centurion House,
London Road, Staines-upon-Thames, Surrey, TW18 4AX

VEVOR®
TOUGH TOOLS, HALF PRICE

Technique Assistance et certificat de garantie électronique
www.vevor.com/support

VEVOR[®]

TOUGH TOOLS, HALF PRICE

Technische ondersteuning en e-garantiecertificaat www.vevor.com/support

ZANDBOX

MODEL:BXSB120

We continue to be committed to provide you tools with competitive price. "Save Half", "Half Price" or any other similar expressions used by us only represents an estimate of savings you might benefit from buying certain tools with us compared to the major top brands and does not necessarily mean to cover all categories of tools offered by us. You are kindly reminded to verify carefully when you are placing an order with us if you are actually saving half in comparison with the top major brands.

VEVOR®

TOUGH TOOLS, HALF PRICE

SANDBOX

MODEL: BXS120



NEED HELP? CONTACT US!

Have product questions? Need technical support? Please feel free to contact us:

Technical Support and E-Warranty Certificate
www.vevor.com/support

This is the original instruction, please read all manual instructions carefully before operating. VEVOR reserves a clear interpretation of our user manual. The appearance of the product shall be subject to the product you received. Please forgive us that we won't inform you again if there are any technology or software updates on our product.

SAFETY INSTRUCTIONS

WAARSCHUWING:

26. Lees alle instructies zorgvuldig door en bewaar deze voor toekomstig gebruik.
27. Alleen door volwassenen gemonteerd . Kinderen moeten dit product gebruiken onder ouderlijk toezicht.
28. Houd alle kleine onderdelen en verpakkingsmaterialen van dit product uit de buurt van baby's en kinderen, anders kunnen ze verstikkingsgevaar opleveren.
29. Een gebrek aan bevestiging kan een risico op kantelen veroorzaken.
30. Niet overbelasten .

Waarschuwing voor montage:

21. Verwijder alle verpakking, scheid en tel alle onderdelen en hardware.
22. Lees elke stap aandachtig door en volg de juiste volgorde.
23. Wij adviseren dat, waar mogelijk, alle artikelen worden gemonteerd in de buurt van de ruimte waar ze in gebruik zullen worden genomen, om te voorkomen dat het product na montage onnodig wordt verplaatst.
24. Zorg voor een veilige ondergrond tijdens de installatie en plaats het product altijd op een vlakke, stabiele en stabiele ondergrond.

MODEL AND PARAMETERS

Model	BXSB120
Leeftijd van aanmelding	3-12 jaar
Max . draagvermogen	11 0 lbs (50 kg) /Elke stoel
Verschijsing	Vierkant
Product grootte	123,5*123,5*30cm
Kleur	Bruin

PARTS LIST AND INSTALLATION

OPMERKING: Controleer of u alle onderdelen heeft, zoals weergegeven in de onderdelenlijst.

	
<p>BD. Paneel x 4</p>	<p>BE. Zitting x 4</p>
	
<p>BF. Lange beugel x 8</p>	<p>BG. Korte beugel x 4</p>
	
<p>BH. Hoekclip x 4</p>	<p>BI. Klittenband x 20</p>
	
<p>BJ. Voering x 1</p>	<p>BK. Deksel x 1</p>
	
<p>BL. Bouten x 32</p>	<p>BM. Wasmachine x 32</p>

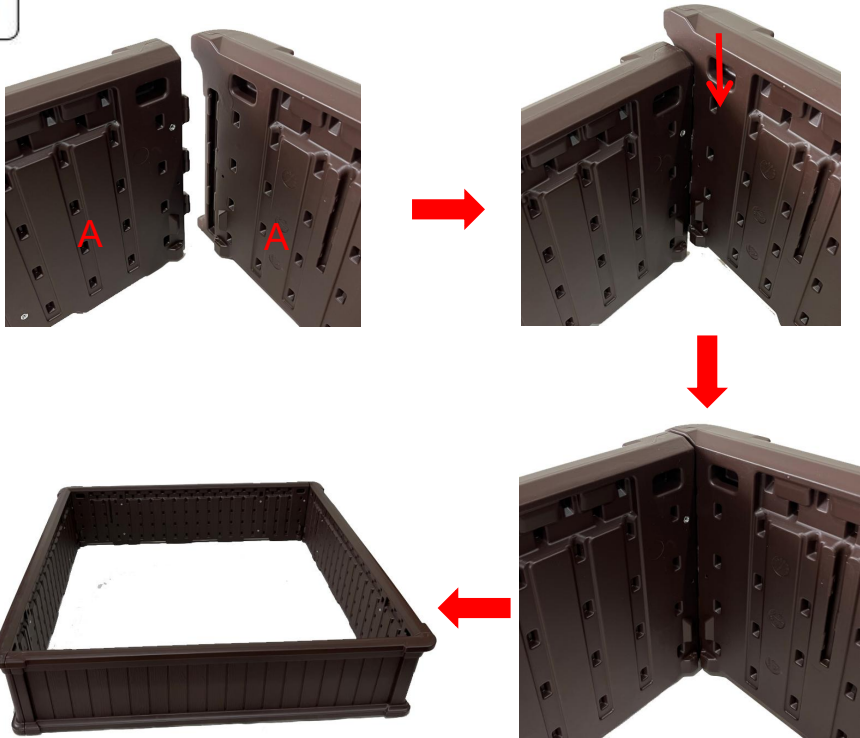


BN. Gebruikershandleiding x1

Installatie:

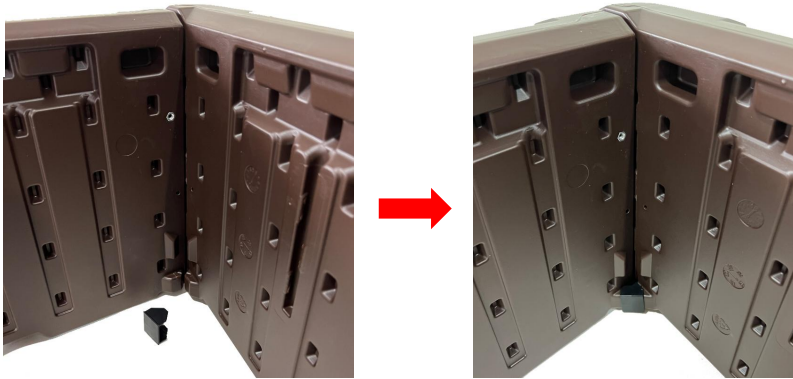
STAP 1: Steek de lipjes aan het uiteinde van een paneel in de sleuf van een tweede paneel. Schuif het tweede paneel naar beneden.

1



STAP 2: Klik de hoekclips in alle 4 de hoeken vast.

2



STAP 3: Schroef het metalen stuk "L" in het paneel.
Herhaal dezelfde stap op de andere 3 hoeken.

3



STAP 4: Lijn alle gaten van de stoelbeugel uit en draai alle bouten vast.
Herhaal dezelfde stap op de andere 3 hoeken.

4



OPMERKING: Zet het product op zijn kant en installeer de bouten.

STAP 5: Plaats eerst de voering in de zandbak voordat u het klittenband op de zijkanten van de zandbak aanbrengt.

5





STAP 6: Bedek de zandbak.

6



MAINTENANCE

11. Buiten direct zonlicht bewaren .
12. gebruik de betrouwbaarheid van de onderdelen .

Fabrikant: NINGBO BOXING LEISURE PRODUCTS CO.,LTD

Adres: NO.91, SHUNYU ROAD, YANGMING STREET, YUYAO CITY, ZHEJIANG PROVINCE, CHINA

Geïmporteerd naar AUS: SIHAO PTY LTD. 1 ROKEVA STREET EASTWOOD NSW 2122 Australië

Geïmporteerd naar de VS: Sanven Technology Ltd. Suite 250, 9166 Anaheim Place, Rancho Cucamonga, CA 91730

UK	REP
-----------	------------

E-CrossStu GmbH
Mainzer Landstr.69, 60329 Frankfurt am Main.

EC	REP
-----------	------------

YH CONSULTING LIMITED.
C/O YH Consulting Limited Office 147, Centurion House,
London Road, Staines-upon-Thames, Surrey, TW18 4AX

VEVOR[®]

TOUGH TOOLS, HALF PRICE

Technisch Ondersteuning en e-garantiecertificaat

www.vevor.com/support

VEVOR[®]

TOUGH TOOLS, HALF PRICE

Teknisk support och e-garanticertifikat www.vevor.com/support

SANDLÅDA

MODELL: BXSB120

We continue to be committed to provide you tools with competitive price. "Save Half", "Half Price" or any other similar expressions used by us only represents an estimate of savings you might benefit from buying certain tools with us compared to the major top brands and does not necessarily mean to cover all categories of tools offered by us. You are kindly reminded to verify carefully when you are placing an order with us if you are actually saving half in comparison with the top major brands.

VEVOR®

TOUGH TOOLS, HALF PRICE

SANDBOX

MODELL: BXSB120



NEED HELP? CONTACT US!

Have product questions? Need technical support? Please feel free to contact us:

Technical Support and E-Warranty Certificate
www.vevor.com/support

This is the original instruction, please read all manual instructions carefully before operating. VEVOR reserves a clear interpretation of our user manual. The appearance of the product shall be subject to the product you received. Please forgive us that we won't inform you again if there are any technology or software updates on our product.

SAFETY INSTRUCTIONS

VARNING:

31. Läs alla instruktioner noggrant och spara dem för framtida referens.
32. Monteras endast av vuxna . Barn bör använda denna produkt under överinseende av föräldrar.
33. Håll alla små delar och förpackningsmaterial för denna produkt borta från spädbarn och barn, annars kan de utgöra en kvävningrisk.
34. Brist på infästning kan orsaka tippningsrisk.
35. Överbelasta inte .

Varning för montering:



25. Ta bort all förpackning, separera och räkna alla delar och hårdvara.
26. Läs igenom varje steg noggrant och följ rätt ordning.
27. Vi rekommenderar att, där det är möjligt, alla föremål monteras nära det område där de kommer att användas, för att undvika att produkten flyttas i onödan när den väl har monterats.
28. Säkerställ en säker yta under installationen och placera alltid produkten på en plan, stadig och stabil yta.

MODEL AND PARAMETERS

Modell	BXSB120
Ansökningsålder	3-12 år
Max . bärkraft	11 0lbs (50 kg) / Varje säte
Utseende	Fyrkant
Produktstorlek	123,5*123,5*30cm
Färg	Brun
Material	Plast

PARTS LIST AND INSTALLATION

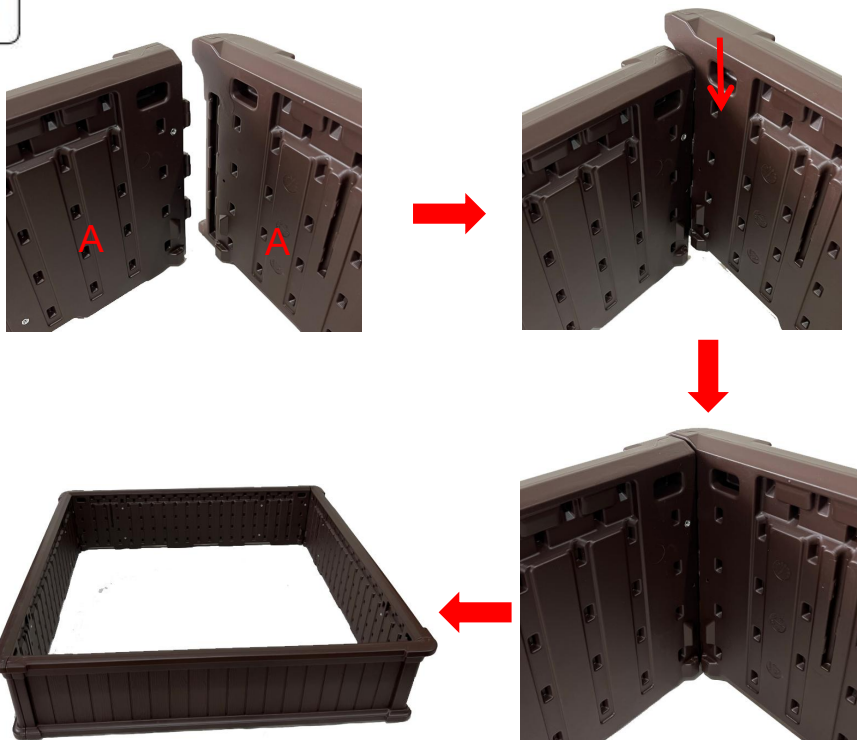
OBS: Kontrollera att du har alla delar som visas i dellistan.

	
BO. Panel x 4	BP. Säte x 4
	
BQ. Långt fäste x 8	BR. Kort fäste x 4
	
BS. Hörnklämma x 4	BT. Krok- och ögkeband x 20
	
BU. Liner x 1	BV. Omslag x 1
	
BW. Bultar x 32	BX. Bricka x 32
	
BY. Användarmanual x1	

Installation:

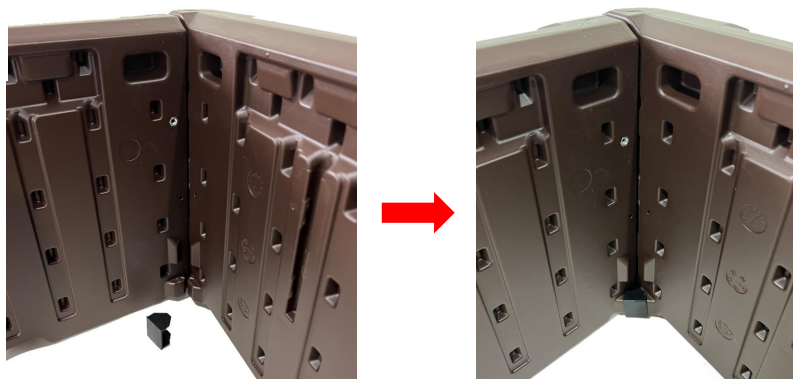
STEG 1: Sätt in flikarna i änden av en panel i skåran i en andra panel.
Skjut den andra panelen nedåt.

1



STEG 2: Snäpp fast hörnklämmorna inuti alla fyra hörnen.

2



STEG 3: Skruva fast "L"-metallstycket i panelen.
Upprepa samma steg på de ytterligare 3 hörnen.

3



STEG 4: Rikta in alla sätesfästens hål och dra åt alla bultar.
Upprepa samma steg på de ytterligare 3 hörnen.

4



OBS: Ställ produkten på sidan och installera bultarna.

STEG 5: Placera fodret i sandlådan först innan du applicerar kardborrebandet på sandlådans sidor.

5



STEG 6: Täck sandlådan.

6



MAINTENANCE

13. Förvaras åtskilt från direkt solljus .
14. Kontrollera delarnas tillförlitlighet före användning.

Tillverkare: NINGBO BOXING LEISURE PRODUCTS CO.,LTD

**Adress: NO.91, SHUNYU ROAD, YANGMING STREET, YUYAO CITY,
ZHEJIANG PROVINCE, KINA**

**Importerad till AUS: SIHAO PTY LTD. 1 ROKEVA STREETEASTWOOD NSW
2122 Australien**

**Importerad till USA: Sanven Technology Ltd. Suite 250, 9166 Anaheim Place,
Rancho Cucamonga, CA 91730**

UK	REP
-----------	------------

E-CrossStu GmbH
Mainzer Landstr.69, 60329 Frankfurt am Main.

EC	REP
-----------	------------

YH CONSULTING LIMITED.
C/O YH Consulting Limited Office 147, Centurion House,
London Road, Staines-upon-Thames, Surrey, TW18 4AX

VEVOR[®]
TOUGH TOOLS, HALF PRICE

Teknisk Support och e-garanticertifikat
www.vevor.com/support

VEVOR[®]

TOUGH TOOLS, HALF PRICE

Soporte técnico y certificado de garantía electrónica www.vevor.com/support

SALVADERA

MODELO:BXSB120

We continue to be committed to provide you tools with competitive price. "Save Half", "Half Price" or any other similar expressions used by us only represents an estimate of savings you might benefit from buying certain tools with us compared to the major top brands and does not necessarily mean to cover all categories of tools offered by us. You are kindly reminded to verify carefully when you are placing an order with us if you are actually saving half in comparison with the top major brands.

VEVOR®

TOUGH TOOLS, HALF PRICE

SANDBOX

MODELO: BXS B120



NEED HELP? CONTACT US!

Have product questions? Need technical support? Please feel free to contact us:

Technical Support and E-Warranty Certificate
www.vevor.com/support

This is the original instruction, please read all manual instructions carefully before operating. VEVOR reserves a clear interpretation of our user manual. The appearance of the product shall be subject to the product you received. Please forgive us that we won't inform you again if there are any technology or software updates on our product.

SAFETY INSTRUCTIONS

ADVERTENCIA:

36. Lea atentamente todas las instrucciones y consérvelas para consultarlas en el futuro.
37. Montado sólo por adultos . Los niños deben utilizar este producto bajo la supervisión de sus padres.
38. Mantenga todas las piezas pequeñas y los materiales de embalaje de este producto fuera del alcance de bebés y niños; de lo contrario, pueden representar un peligro de asfixia.
39. La falta de fijación puede provocar riesgo de vuelco.
40. No sobrecargues .

Advertencia para el montaje:

29. Retire todo el embalaje, separe y cuente todas las piezas y herrajes.
30. Lea atentamente cada paso y siga el orden correcto.
31. Recomendamos que, siempre que sea posible, todos los artículos se monten cerca del área en la que se utilizarán, para evitar mover el producto innecesariamente una vez montado.
32. Asegure una superficie segura durante la instalación y coloque el producto siempre sobre una superficie plana, firme y estable.

MODEL AND PARAMETERS

Modelo	BXSB120
Edad de aplicación	3-12 años
Máximo . capacidad de	11 0 libras (50 kg) /Cada asiento
Apariencia	Cuadrado
Tamaño del producto	123,5*123,5*30cm
Color	Marrón

PARTS LIST AND INSTALLATION

NOTA: Verifique que tenga todas las piezas como se muestra en la lista de piezas.

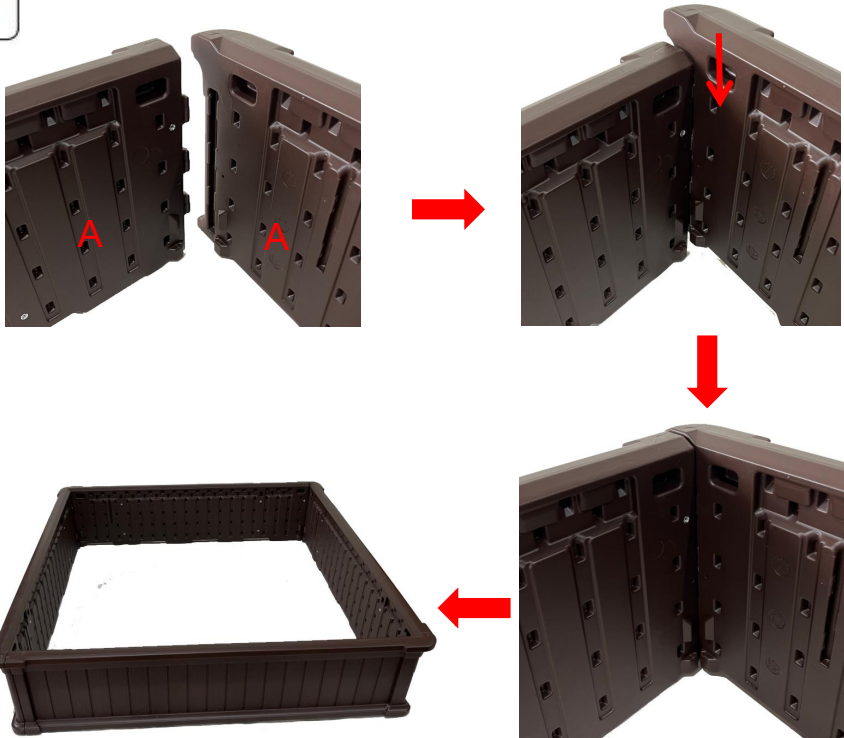
	
BZ. Paneles x 4	CA. Asiento x 4
	
CB. Soporte largo x 8	CC. Soporte corto x 4
	
CD. Clip de esquina x4	CE. Cinta de gancho y bucle x20
	
CF. Forro x 1	CG. 1 funda .
	
CH. Pernos x 32	CI. Lavadora x 32

CJ. Manual de usuario x1

Instalación:

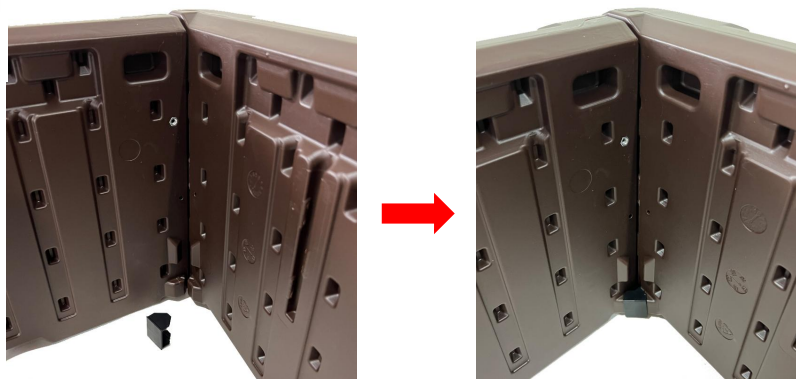
PASO 1: Inserte las pestañas al final de un Panel en la ranura de un segundo Panel. Deslice el segundo panel hacia abajo.

1



PASO 2: Coloque los clips de las esquinas dentro de las 4 esquinas.

2



PASO 3: Atornille la pieza metálica en "L" al Panel.
Repite el mismo paso en las otras 3 esquinas.

3



PASO 4: Alinee todos los orificios del soporte del asiento y apriete todos los pernos.
Repite el mismo paso en las otras 3 esquinas.

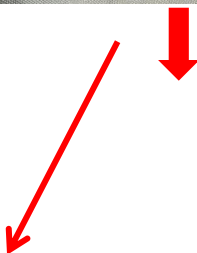
4



NOTA: Coloque el producto de lado e instale los pernos.

PASO 5: Primero coloque el revestimiento en el Sandbox antes de aplicar la cinta de velcro a los lados del Sandbox.

5





PASO 6: Cubra la caja de arena.

6



MAINTENANCE

15. Guardar alejado de la luz directa del sol .
16. Verifique la confiabilidad de las piezas antes de su uso.

Fabricante: NINGBO BOXEO OCIO PRODUCTOS CO., LTD

**Dirección: NO.91, SHUNYU ROAD, YANGMING STREET, YUYAO CITY,
ZHEJIANG PROVINCE, CHINA**

**Importado a AUS: SIHAO PTY LTD. 1 ROKEVA STREET ASTWOOD NSW 2122
Australia**

**Importado a EE. UU.: Sanven Technology Ltd. Suite 250, 9166 Anaheim Place,
Rancho Cucamonga, CA 91730**

UK	REP
-----------	------------

E-CrossStu GmbH
Mainzer Landstr.69, 60329 Frankfurt am Main.

EC	REP
-----------	------------

YH CONSULTING LIMITED.
C/O YH Consulting Limited Office 147, Centurion House,
London Road, Staines-upon-Thames, Surrey, TW18 4AX

VEVOR[®]
TOUGH TOOLS, HALF PRICE

Técnico Certificado de soporte y garantía electrónica
www.vevor.com/support