

Spark Nano 7

User's Guide



What's Inside



Spark Nano 7



Wall Charger

Optional Accessories



Weatherproof Magnetic GPS Box

*Reduces the risk of physical damage to
your device*

Spark Nano 7

1. Power Button
2. Charging Port
3. Panic Button
4. Cell LED (Green)
5. Power (Red)
6. GPS LED (Blue)



LED

Cell LED: Green Light

1. A fast flash indicates searching for network.
2. A slow flash indicates the device is registered on network.
3. When the the light is not lit, the device modem is not looking for network.

Power LED: Red Light

1. A solid red power indicator means the charging cable is inserted and the charging cycle is complete.
2. A fast blinking light when the charging cable is inserted means the device is charging.
3. If you press the power key, the fast flash will also be seen during power on and power off.
4. A slow blinking indicator is a low power alert.
5. The power light will not be on during normal device operation.

Note: If the device has not been charged for a long period of time, the red power light may take a few moments to light up and start blinking. If

you have not charged the device for a long time and the light does not light up when the device is plugged in, please allow at least 6 hours of charge, and then try to power the device on.

GPS LED: Blue light

1. A fast flash indicates searching to get a GPS fix.
2. A intermittent solid blink will indicate it has a fix and is acquiring a position.
3. A slow steady blink will indicate a potential problem getting a GPS fix.

Getting Started

You should have received an email containing your default login information; this will be used to configure your device and view tracking information (which will be covered later in this user's guide).

The first step in using your *Spark Nano 7* is to charge it. To charge, plug the AC adapter into a wall outlet. Then, gently insert the mini-USB charging end into the charging port of your device. Ensure the mini-USB ends are properly aligned. Charge the Spark Nano for at least 5 hours before first use. When fully charged, the red light will be solid (and then will stop glowing after a prolonged period of remaining plugged in after it's fully charged). When the device is done charging, disconnect it from the charger and press the power button to turn the device on. Make sure all the rubber port covers are securely in place before use.

It is important that the tracker have a clear view of the sky. Since the device is motion-activated, it is not sufficient to leave it outside or on a windowsill for it to register. It must be moving in order to register and report its location.

To power on the unit, hold down the power button for around 3 seconds, also

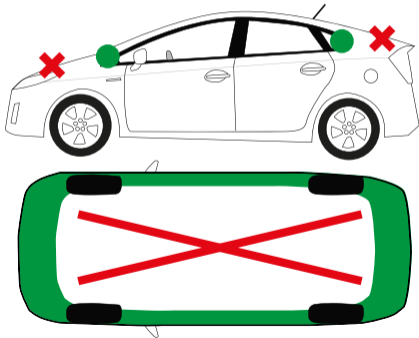
plugging the unit in to power will power it on. The power light will light up briefly indicating power on. To power off the unit, hold down the power button for around 3 seconds. You'll see the power light begin to flicker indicating it will power off soon.

Note: It can take up to a minute for the device to power down after the red indicator light turns on.

Placing Your Device

**Place in green zones for best results.*

Your Spark Nano will always give the most accurate location data when it has a clear view of the sky. It is capable of transmitting and receiving through materials like glass, plastic, and cloth, but is not able to transmit through metals. Keep this in mind when placing the device.



Avoid placing the device in the trunk of a vehicle. It may or may not report from a glove compartment or underneath a seat. This interference can vary from vehicle to vehicle, however, as all automobiles are constructed differently.

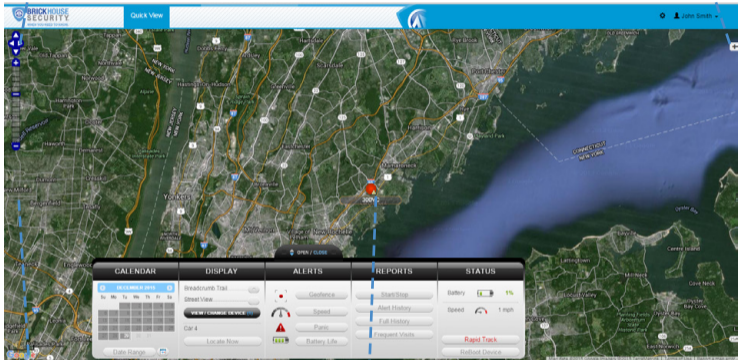
If you want to track covertly, the Weatherproof Magnetic GPS Box may be the best solution for you. When placing the device beneath a vehicle, be sure that the side with the LEDs is facing down, toward the ground, and that it is as near the edge of the vehicle as possible.

Tracking Your Device

To track your Spark Nano, open a browser window and go to www.BrickhouseSecurity.com. Hover your cursor over the Login tab on the top right of the website and click on GPS Tracking. Enter your login information and press the Submit button. The tracking page will appear, and the device's last reported location will be centered on the map. If you have multiple devices on your account, the first 3 that were registered will be automatically selected and appear on the map. Along the bottom of your screen will be your dashboard.

Navigation Arrows

Change Map View



Zoom Bar

Dashboard

Last Known Location

Tracking information is displayed using Google Earth Maps, so navigation is similar to what most people have grown used to in using internet-based mapping solutions. You can use the Navigation arrows and Zoom Bar to move around the map, or drag the map using your mouse and zoom using a click-wheel mouse.

At the bottom of the pop-up window are the Zoom, Street View, and Live Tracker buttons.

- **Zoom** will perform the same task as using the Zoom bar on the left side of the map; zooming in on the icon you have selected.
- **Street View** will open up a separate window displaying Google's Street View, if available.

The **BrickHouse Security shield icon** will appear where a tracker transmitted most recently. Click on an icon to bring up a pop-up box. This will show your tracker's name, the distance it has traveled on this trip, what direction it was moving in, speed, battery information, and start and stop locations. **Start** will display the beginning location of the current trip, and the time it was recorded. **Stop** will display the most recent location from the device, as well as the time it was reported.

gps.brickhousesecurity.com/G/BHS/QuickView.aspx

Desk.com - Login | https://businessflow... | Home - NetSuite [B... | Track BHS/Net | Track BHS/Net Devic... | Task Manager | Omega Manage... | Advanced Exchanges | Google Voice - Inbox | T-Mobile Personal C...

BRICKHOUSE SECURITY | Quick View | John Smith

Vehicle ID: 289VC

Start: 12/15/2010 12:00:00 AM
 4 Roosevelt Ave., Lark/Cross/HT, Manassas, VA, 10130, US
 Lat: 40.152309550000000007 | Lon: -73.753643000000000000
 Alt: 72 ft

Stop: 12/15/2010 11:40:53 PM
 2 Roosevelt Ave., Lark/Cross/HT, Manassas, VA, 10130, US
 Lat: 40.152309550000000002 | Lon: -73.753643000000000000
 Alt: 21 ft

Distance: 33.01 mi
 Duration: 23 hours 40 minutes

Speed: 0 mph
 Direction: Southwest

Start | Street View | Link to Map | Live Tracker | Refresh Device

CALENDAR	DISPLAY	ALERTS	REPORTS	STATUS
<p>DECEMBER 2010</p> <p>Su Mo Tu We Th Fr Sa</p> <p>1 2 3 4 5 6 7 8 9 10 11 12 13 14 15 16 17 18 19 20 21 22 23 24 25 26 27 28 29 30 31</p> <p>Date Range</p>	<p>Breakdown Trail</p> <p>Street View</p> <p>VIEW COMMAND CENTER</p> <p>100°C</p> <p>Locate Now</p>	<p>Confidence</p> <p>Speed</p> <p>Panic</p> <p>Battery Life</p>	<p>Start Stop</p> <p>Alert History</p> <p>Full History</p> <p>Frequent Visits</p>	<p>Battery 6%</p> <p>Speed 0 mph</p> <p>Rapid Track</p> <p>Refresh Device</p>

The *More* tab is not currently active. Future updates to the platform will utilize this tab.

The *GeoFence* tab allows you to create quick geofences, based on the location you are currently viewing and route the device was following. Use the *Circular GeoFence* radio button to create a perimeter around the location you have selected. Use the *Route GeoFence* radio button to create a boundary that will follow your device's entire trip.

Give the GeoFence a name in the *GeoFence Name* window, and add a short description in the *Description* box (optional).

Use the *Action* drop down box to choose if you would like an alert created when the device enters the chosen area, exits the area, or both. Use the *Radius* box to choose how large the area will be. You can enter values below a mile as decimals. *For example:* A half-mile radius geofence would be entered as .5.

When you're done, press the *Create Geofence* button to save.

The *Alerts* tab will display the most recent Geofence, Speed, Panic, or Power alerts that have been triggered.

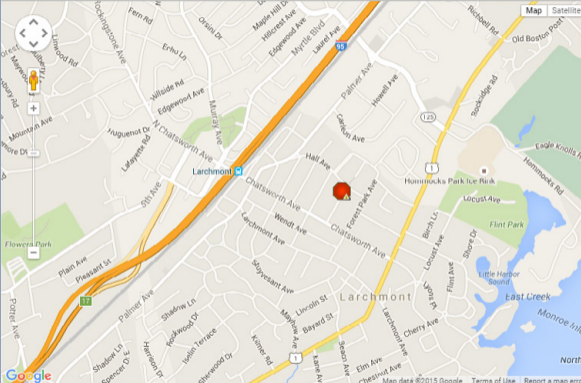
The *Video Links* tab is not currently active. Future updates will take advantage of this tab.

Live Tracker will open up a separate window displaying your devices' locations, and allows you to see past locations. Using the drop-down boxes on the bottom right of the window, you can adjust how often your screen refreshes and how many locations will appear on the screen. The counter on the bottom left of the window displays how long it will be until your screen refreshes. You can email a link to this page, allowing other users to view your tracker's location by click on the Share This icon in the upper right hand corner of the window. When doing so, you may choose how long the link will be active before expiring using the Link Expiration dropdown.

300VC Live Tracker - Google Chrome

gps.brickhousesecurity.com/G/LiveTracker.aspx?unitName=300VC&defaultMapMode=

300VC Live Tracker



Map Satellite

0:48 until refresh Speed: 0 mph

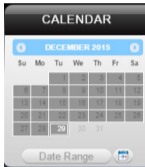
Set Refresh 1 Min Show Default

Using the Dashboard



The *Calendar* allows a user to choose from which dates information can display. Any date that has tracking information will be highlighted. Simply click on that date to display information. To choose multiple days, click on the *Date Range* button, input a start and end date, and press Search. Press the *Current Date* button to return to viewing the current day's information. When searching by date, all locates generated in the chosen timeframe will display as breadcrumbs.

Under the *Display* section you can see a list of all devices currently displaying information on the map. Click on the View/Change Device button to choose which of your devices will display on the map. This button only serves a purpose if there are multiple devices on your account.



Breadcrumb Trail will display all locations, or breadcrumbs, generated on the date you currently have displayed, connected by a line. Click on any individual breadcrumb to see detailed information. The BrickHouse Security shield icon represents the start and stop of a trip, green circles mean the device was moving with the arrow indicating direction, and red octagons indicate stops.

Click on the *Street View* button to open a Google Street View window from the most recent location of the device. This function will only work if Google Street View is available in that location.



The *Alerts* section lets you manage what kinds of alerts your device will create and how you will be notified.

Click the *Geofence* button to manage your geofences. The Geofence Alert Configuration tab lets you choose when and where alerts will be sent. Select the device you would like to edit by checking the box next to it.

- Highlight which days you would like to configure by clicking on each. You may choose to enter certain hours during which alerts will be active, or leave these fields blank to have them sent all the time.
- Choose if duplicate alerts will not be created if the device stays inside or outside a geofence for a certain period of time using the slider bar.
- Choose what icon will appear where a geofence alert was created using the Alert Image dropdown box.

Enter Email Address allows you to choose where alert notifications will be sent. Click on the + icon to add phone numbers you want to have texted.

In the *Create New Geofence* tab you can create geofences around any area in different shapes. Navigate to the area on the map you would like to create a geofence. Click on the Circle, Polygon, or Route button. It is suggested that all geofences be in at least a .2 mile radius, or at least 1 city block around an area to allow for GPS drift.

To create a circular geofence around an area, click on *Circle* and then click on the spot on the map you want to create your geofence around. Hold down the left mouse button and drag the cursor until your geofence is the size you want, and release the mouse button.

The *Polygon* button allows you to create geofences in different shapes. Each point you click on will be a corner of your perimeter.

A *Route* geofence will be straight lines. You must choose how far a device will need to be away from the route before a report is generated.

Once you have created a geofence, assign it a name in the Geofence field and hit Save. You may also choose to enter a short description for your geofence.

The *Assign Geofence* tab allows you to activate and deactivate geofences. Select a device from the dropdown menu to see what geofences are currently active. Click on an Assigned Geofence to view and edit its configuration. Click the Remove link to deactivate a geofence. Hit *Save* once you have finished making changes.

Click on the check box for any available geofence to edit its configuration and press the *Save* button to implement it.

The *View Geofence* tab allows you to view your geofences.

Click the *Speed* button on the dashboard to set up speed alerts. Simply select your device and enter a speed which, when exceeded, will generate an alert. Choose the days and times you would like the alert to be active, if you would like duplicate alerts to be ignored, and enter an email address where you wish to receive your notifications. If you would prefer to receive alert notifications via text message, click on the **+** button and enter your phone information. Hit Save once you have finished configuring your alerts.

Click the *Panic* button to set up panic alerts. Choose a device and whether you would like to ignore duplicate alerts (not suggested for the panic feature), and

choose the icon you would like to appear on the map to denote a panic alert. If you would like to receive emailed alerts, enter your email address into the Email Address bar. If you would prefer to receive alerts via text message, press the + button and enter your phone information. Hit **Save** once you have finished configuring your alerts.

Click the **Power** button to set up low power alerts. Low power alerts will send you an email or text message when the device's power drops below a certain level. Choose to receive alerts when your device's battery drops below 10%, 25%, or 50% of its maximum capacity.

You can run 4 different types of report, listed below. To run one, click on one of the buttons, choose the device you would like to run a report on from the dropdown box, choose the dates you would like to run your report on in the upper right corner, and press the magnifying glass search icon. You can export any generated reports to Microsoft Excel by clicking on the export button in the upper right corner of the window.

Search

Export to Excel

The screenshot shows a web browser window displaying the 'Full History' page of a security application. The browser's address bar shows 'trach.bhs.net/track/track.asp?'. The page header includes the 'BRICKHOUSE SECURITY' logo and navigation links like 'Home', 'About Us', and 'Logout'. The main content area features a search bar with 'Unit 1001' entered and a date range filter set to '10/06/2011' to '10/06/2011'. Below this is a table with the following columns: Date, Status, Location, Speed (mph), Battery, and Distance (mi). The table body is currently empty. A satellite map is visible on the left and right sides of the page. A blue arrow labeled 'Search' points to the search bar, and another blue arrow labeled 'Export to Excel' points to a button in the top right corner of the table area.

Start/Stop reports will list trips between stopping points, with starting and ending locations, as well as speed information, trip duration, stop time, and the distance traveled.

The *Alert History* button will show you all alerts generated during the specified time and where they occurred.

The *Full History* button includes individual locations information such as: location, time of transmission, battery life, speed, and distance from its previous locations.

The *Frequent Visits* button will create a list of addresses that the device has reported from and show how many times the device reported from that spot.

Changing Your Password

To change your password, click on the account name, which should appear in the upper right corner of the browser window. Once complete, click on [Quick View](#) to return to your tracking page.

Support

To review FAQs, as well as other support materials for your device and the BrickHouse Security Tracking platform, click on the Help link in the upper right corner of the screen.

Live support is available [Monday through Friday between the hours of 9am and 8pm EST. Saturday and Sunday Between the hours of 9am and 6pm EST. at 1-800-654-7966 or email at \[support@brickhousesecurity.com\]\(mailto:support@brickhousesecurity.com\).](#)

