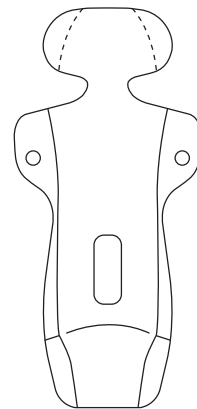


IMPORTANT! KEEP FOR FUTURE REFERENCE.



Cova AI

cooling pad

User Manual



UNILOVE BABY LTD

Unit G25 Waterfront Studios, 1 Dock Road, London,
United Kingdom E16 1AH

✉ inquiry@unilovebaby.com
🏠 www.unilovebaby.com

©2026 Unilove. All Rights Reserved.



V.1

Cleaning and Maintenance

1. Remove the cooling fan unit and water tanks from the seat pad before washing. Clean the fan unit by gently wiping away dust with a clean, soft cloth. The seat pad can be hand-washed or machine-washed in water below 40°C (104°F). Due to material characteristics, vigorous scrubbing or wringing may damage the product. If machine washing, use a laundry bag or select a gentle cycle with low spin speed. Do not use a dryer or wringer to avoid deformation.
2. Do not tumble dry. After washing, lay the pad flat to air dry, and avoid straight sunlight when drying and dry in the shade.
3. If the product will not be used for an extended period, clean the seat pad thoroughly, allow it to dry completely, and store it in a dry and well-ventilated area.
4. Avoid squeezing the seat pad or scratching its surface with sharp objects.
5. Always follow the washing instructions, otherwise we can't provide refund or replacement.

Cautions

Important! Please read carefully and keep for future reference.

- Do not leave baby unattended. Adult supervision is required.
- Improper use of this product could result in serious injury or death.
- Do not use this product for purposes other than its intended use.
- Children using medical equipment or undergoing treatment for illnesses such as colds should consult a doctor before use. Discontinue use if discomfort occurs.
- This product must be used with the grille installed and the zipper fully closed.
- If liquid enters the ventilation system, allow the device to dry thoroughly before use to prevent damage to the fan.
- Prolonged exposure to direct sunlight may cause fading or high-temperature damage.
- Contact with bleach, fabric deodorizers, wax, acetone, etc., may damage the fabric.
- Dark-colored foods (e.g., sauces, coffee) or dark clothing (e.g., jeans) may stain the seat cover.
- Depending on the usage environment and duration, deformation, fading, or fabric loosening may occur.
- Before replacing the fan, ensure the power is turned off and wait for the fan to stop completely (at least 10 seconds after power-off).
- Due to material characteristics, vigorous scrubbing or wringing may damage the product. If machine washing, use a laundry bag or select a gentle cycle with low spin speed. Do not use a dryer or wringer to avoid deformation.
- Keep small parts out of reach of children to prevent accidental ingestion.
- This product contains cables. Ensure cables are properly stored to prevent strangulation hazards for children.
- When using a power bank supply, ensure the output is DC5V/2A or higher (lower outputs may damage the product).
- When using a power bank supply, avoid splashing water on the power source to prevent short circuits, overheating, or explosions.
- Do not block the air inlet or outlet on the bottom fan unit.
- This fan is not a toy—keep it away from children.

Care and Maintenance

NOTE: This is an electrical appliance and requires attention when in use. When cleaning the device, dry it immediately. Do not splash water on power bank.

Disposal

At the end of the product life cycle, you should not dispose of this product with normal household waste. Take this product to a collection point for the recycling of electronic equipment in accordance with your local laws. Some of the product materials can be reused if you take them to a recycling point. By reusing some parts or raw materials from used products, you make an important contribution to the protection of the environment. Please contact your recycling center for need more information on the collection points in your area.

CAUTION

This equipment complies with FCC radiation exposure limits set forth for an uncontrolled environment. This transmitter must not be co-located or operating in conjunction with any other antenna or transmitter.

FCC Statement

Caution: The user is cautioned that changes or modifications not expressly approved by the party responsible for compliance could void the user's authority to operate the equipment.

This device complies with Part 15 of the FCC Rules. Operation is subject to the following two conditions: (1) this device may not cause harmful interference, and (2) this device must accept any interference received, including interference that may cause undesired operation.

NOTE: This equipment has been tested and found to comply with the limits for a Class B digital device, pursuant to Part 15 of the FCC Rules. These limits are designed to provide reasonable protection against harmful interference in a residential installation. This equipment generates, uses and can radiate radio frequency energy and, if not installed and used in accordance with the instructions, may cause harmful interference to radio communications. However, there is no guarantee that interference will not occur in a particular installation.

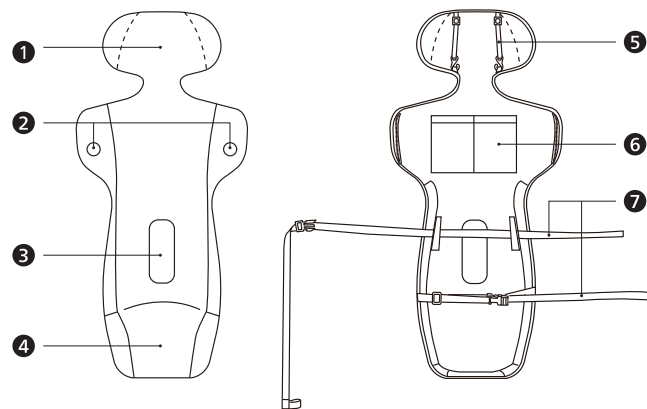
If this equipment does cause harmful interference to radio or television reception, which can be determined by turning the equipment off and on, the user is encouraged to try to correct the interference by one or more of the following measures:

1. Reorient or relocate the receiving antenna.
2. Increase the separation between the equipment and receiver.
3. Connect the equipment into an outlet on a circuit different from that to which the receiver is connected.
4. Consult the dealer or an experienced radio/TV technician for help.

FCC Radiation Exposure Statement:

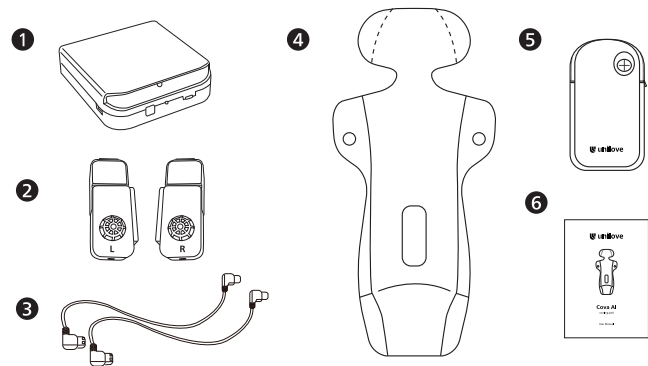
This equipment complies with FCC radiation exposure limits set forth for an uncontrolled environment. This transmitter must not be co-located or operating in conjunction with any other antenna or transmitter.

Product Introduction



1. Headrest
2. Side fan with water tank
3. Seat belt hole
4. Bottom fan unit
5. Headrest elastic strap
6. Ice pack pocket
7. Seat pad fixing straps

Contents List

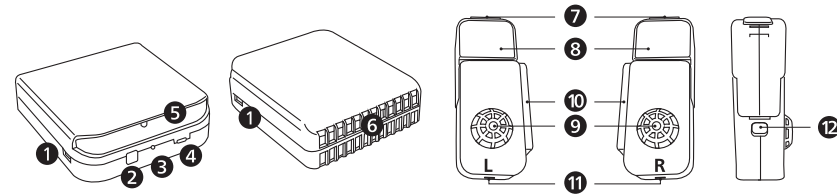


1. Fan unit x 1
2. Side fan with water tank x 2
3. Cable (side fan) x 2
4. Seat pad x 1
5. Power bank pocket x 1
6. User manual x 1

Product Specifications

| Product Name | Cova AI Cooling Pad |
|-----------------------|-----------------------------|
| Model Number | MCP01 |
| Product Dimensions | W 420mm X L 925mm (±20mm) |
| Product Weight | 922g |
| Product Material | Polyester, PU, Polyurethane |
| Fan Specifications | Single turbine |
| Power Specifications | DC 5V/2A |
| Operating Temperature | 0°C - 40°C |
| Operating Humidity | 20% - 80% RH |
| Use of age | Newborn - Age 4 |

Contents List



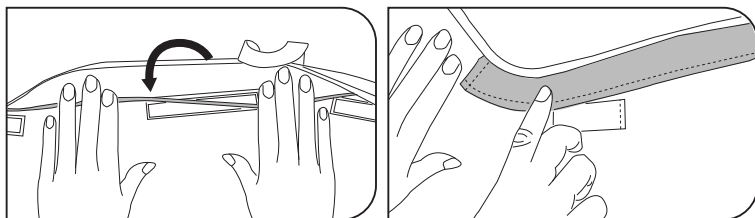
1. Fan unit x 1
2. Side fan with water tank x 2
3. Cable (side fan) x 2
4. Seat pad x 1
5. Power bank pocket x 1
6. User manual x 1

1

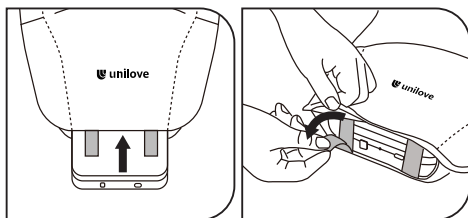
Product Installation and Removal

Installation Steps

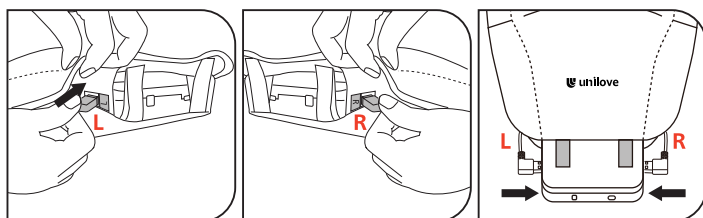
1. Open the cable channel on the back of the pad, place the USB cable labeled "R" in the right channel with the Micro USB end facing up, then attach the velcro to secure the cable. Place the USB cable labeled "L" on the left side, same operation as the right side.



2. Install the bottom fan unit (as shown below). Insert bottom fan unit into the slot under the pad with "THIS SIDE UP" and secure it with velcro.



3. Connect the USB cables for the bottom fan unit. Insert the right USB plug into the right port and the left USB plug into the left port. Make sure the "L" & "R" labels on the cable and seat pad is matched.



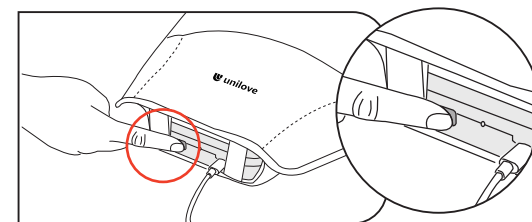
3

Network Setup

1. Download and open the App: Search for "Smart Life" in the IOS/Android app store or scan the QR code in the manual to download and install the "Smart Life" app. If it is your first time using the app, click "Register" to create an account. If you already have an account, click "Login."



2. Insert the 5V Type-C power supply and turn on Bluetooth on your phone. Press and hold the network setup button for 5 seconds until the light flashes rapidly.



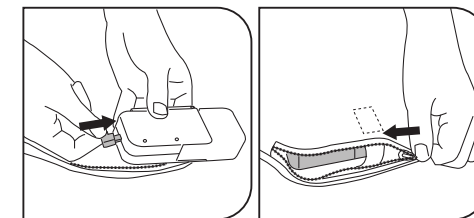
3. In the app, click "Add Device" -> The app will automatically scan and discover "COVA AI", Click it to add -> "Added successfully". If the device is not found, repeat step 3.

Product Features

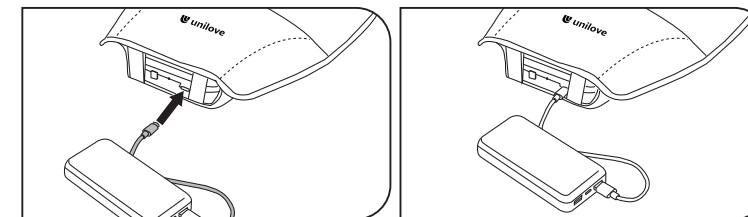
1. High-Power Fan - Three-speed settings, with a maximum wind speed of 15 m/s.
2. Exclusive Water Cooling Technology - Side fans enhance airflow while simultaneously releasing water mist for rapid cooling.
3. AI Smart Temperature Control - AI algorithms adjust wind speed and water mist based on ambient temperature.
4. Power bank Supply - Compatible with most 5V/2A power bank supplies on the market.
5. Intuitive Operation - Supports Bluetooth functionality for control via a smartphone app.

2

4. Install the side fans. Connect the side fan labeled "R" to the right Micro USB plug and the one labeled "L" to the left Micro USB plug. Place the side fans into their slots, secure them with velcro, and close the zippers to seal the pockets.



5. Connect the power cable (The product package does not include a power cable. Please select a cable with Type-C plug for this product). Insert the Type-C plug of the cable into the cable port of the bottom fan unit, and connect the other end to a power bank.



Removal Steps

1. Turn off the power, disconnect the power cable, and unplug the side fans' USB connectors from the bottom fan unit.
2. Release the velcro, and remove the bottom fan unit.
3. Unzip the side fan pockets, release the velcro, unplug the cables, and remove the side fans.
4. Release the velcro on the right/left side of the seat pad back, and remove the USB cables.

4