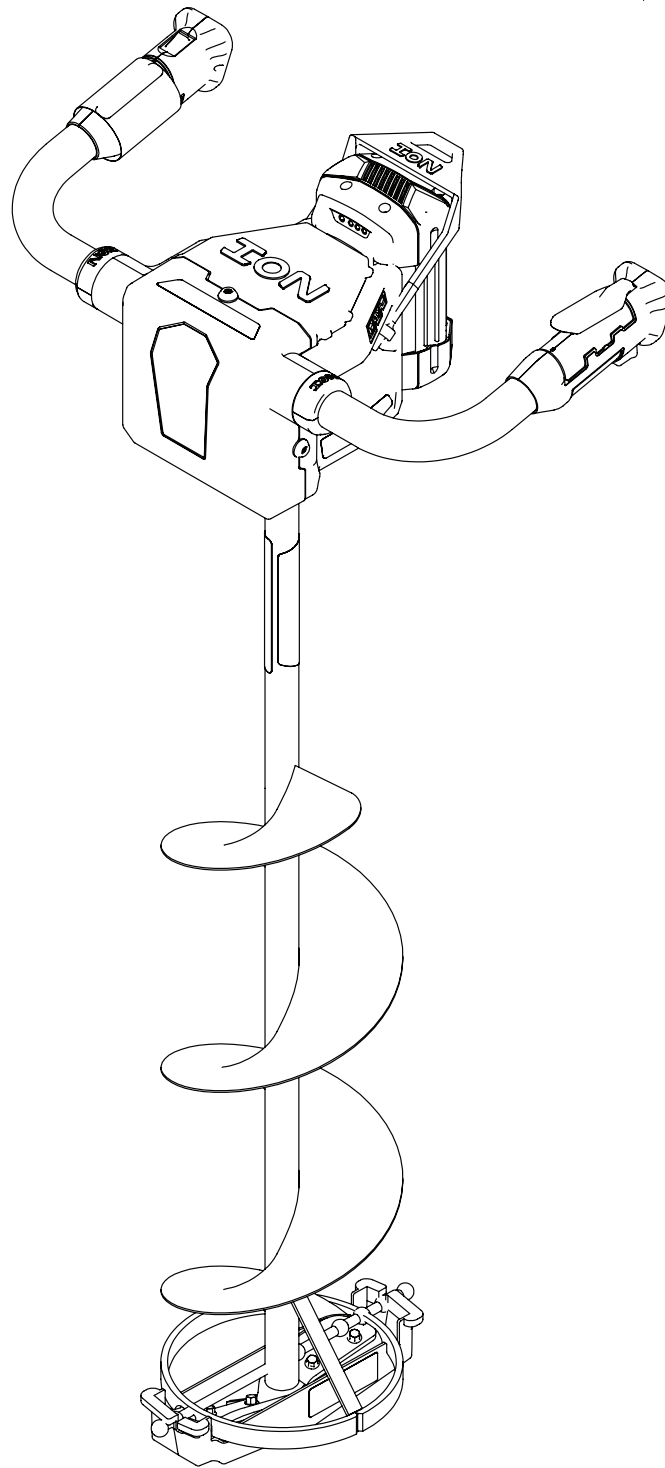




Operator's Manual
Original Operating Instructions

ION[®] ELECTRIC ICE AUGER



ION[®] ELECTRIC ICE AUGER

11974-0001R1

Get parts online at
www.ioniceaugers.com



11474 ECN 10445
REV. 3 06/30/2014
© COPYRIGHT 2014 ARDISAM, INC.
ALL RIGHTS RESERVED.

INTRODUCTION

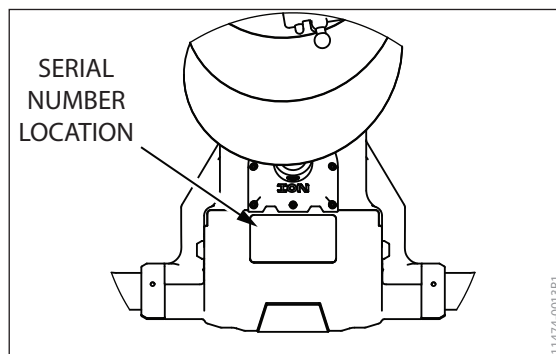
Thank you for purchasing an ION® Electric Ice Auger from Ardisam, Inc. We have worked to ensure that this ice auger meets high standards for usability and durability. With proper care, your ice auger will provide you many years of service. Please take the time to read this manual carefully to learn how to correctly operate and maintain your ice auger. Congratulations on your investment in quality. Save these instructions for future reference. Ardisam, Inc reserves the right to change or alter this manual without notice.

Contents

Introduction / Registration and Service.....	2
Important Safety Precautions.....	3-5
Unpacking and Assembly.....	6
Operation.....	7
Maintenance and Storage.....	8
Service and Repairs.....	9
Troubleshooting.....	9
Parts.....	10-11
Warranty.....	12

Registration and Service

Record the product model number and serial number in the space provided for easy reference when ordering parts or requesting technical support. You can register your warranty online by visiting www.ioniceaugers.com, or by mailing it to: ION®, 1160 Eighth Avenue, Cumberland, WI 54829. For customer service department at (800) 345-6007 Mondays through Fridays from 8 a.m. to 5 p.m. CT.



OWNERSHIP RECORDS		
Place of Purchase:		
Place of Purchase Address:		
City:	State/Province:	Zip Code/Postal Code:
Model Number:		Serial Number (found next to warning tag):
Date of Purchase:		
Notes:		

This manual may contain information for several models. Read and keep this manual for future reference. This manual contains important information on SAFETY, ASSEMBLY, OPERATION, AND MAINTENANCE. The owner must be certain that all the product information is included with the unit. This information includes the MANUAL, the REPLACEMENT PARTS and the WARRANTIES. This manual should remain with the unit even if it is resold.

WARNINGS AND SAFETY PRECAUTIONS

Operator's Responsibility

Accurate, safe and effective use of this product is the operator's responsibility.

- Read and follow all safety instructions.
- Maintain this machine according to directions and schedule included in this operator's manual.
- Ensure that anyone who uses the machine is familiar with and understands all controls and safety precautions.
- Do not discard battery into trash can. Discard the battery according to your local, state or federal or country's regulations.

Safety Messages

Your manual contains special messages to bring attention to potential safety concerns, as well as helpful operating and servicing information. Please read all the information carefully to avoid injury and machine damage.

NOTE: *General information is given throughout the manual that may help the operator in the operation or service of the product.*



THIS SYMBOL POINTS OUT IMPORTANT SAFETY INSTRUCTIONS WHICH IF NOT FOLLOWED COULD ENDANGER YOUR PERSONAL SAFETY.

Before Operating Unit:

Please read this section carefully. Read entire operating and maintenance instructions. Failure to follow instructions could result in injury or death. Operate the machine according to the safety instructions outlined here and inserted throughout the text. Anyone who uses this machine must read the instructions and be familiar with the controls.

WARNING

WARNING INDICATES A HAZARD WHICH, IF NOT AVOIDED, COULD RESULT IN DEATH OR SERIOUS INJURY AND/OR PROPERTY DAMAGE.

CAUTION

CAUTION INDICATES YOU CAN BE HURT OR YOUR EQUIPMENT DAMAGED IF THE SAFETY INSTRUCTIONS THAT FOLLOW THIS SIGNAL WORD ARE NOT OBEYED.

IMPORTANT

INDICATES HELPFUL INFORMATION FOR PROPER ASSEMBLY, OPERATION, OR MAINTENANCE OF YOUR EQUIPMENT.

WARNING

READ AND COMPLY WITH ENTIRE OPERATING AND MAINTENANCE INSTRUCTIONS FOR THIS MACHINE, IN ADDITION TO ALL SAFETY INSTRUCTIONS. FAILURE TO FOLLOW AND/OR COMPLY WITH THESE INSTRUCTIONS COULD RESULT IN LOSS OF MACHINE CONTROL, SERIOUS PERSONAL INJURY OR DEATH TO YOU AND/OR BYSTANDERS, AND EQUIPMENT AND PROPERTY DAMAGE. OPERATE THE MACHINE ACCORDING TO THE SAFETY INSTRUCTIONS OUTLINED HERE AND INSERTED THROUGHOUT THE TEXT. ANYONE WHO USES THIS MACHINE MUST READ THE INSTRUCTIONS AND BE FAMILIAR WITH THE CONTROLS.

INTENDED USE / FORESEEABLE MISUSE

This is a motorized ice auger powerhead that drills into ice. It has an electric motor that powers the ice auger blades. It shall not be used for any other purpose.

CE NOISE/VIBRATION

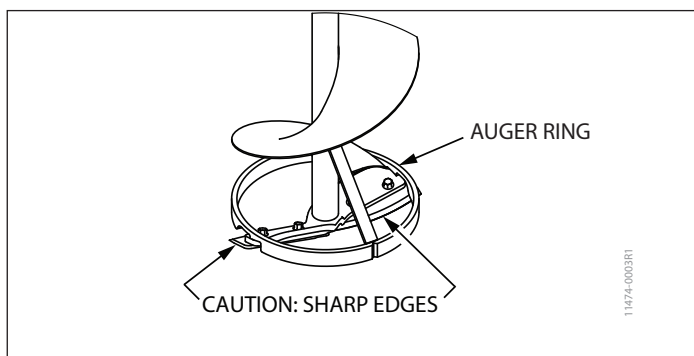
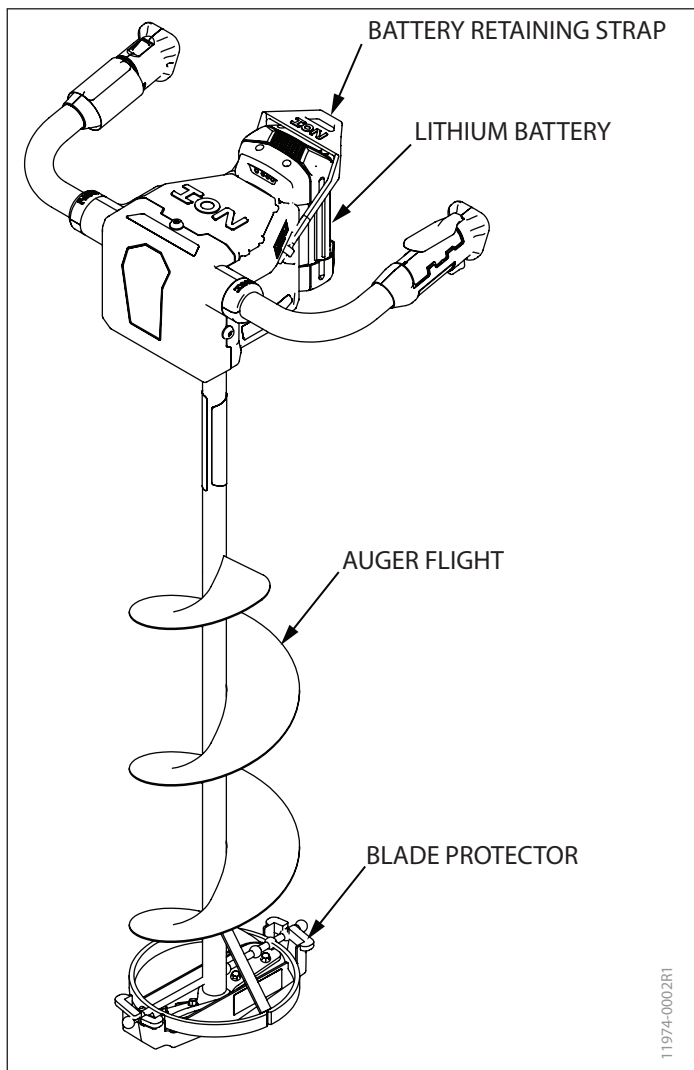
- Vibration level is less than 2.5 m/s²
- Noise is below 40dB.

Important Safety Precautions

- The ice blades are very sharp. Use extreme caution when drilling a hole or replacing the blades. Put the blade guard on after each use.
- Always keep hands, feet, hair, drawstrings, scarves, hats and loose clothing away from any moving parts on the unit.
- Do not allow children to operate this unit. Do not allow adults to operate the unit without proper instruction.
- Do not operate any power equipment under the influence of alcohol or drugs.
- Keep all screws, nuts and bolts tight.
- The battery must be removed before any repairs are attempted.
- If the unit becomes unturnable in a hole, remove the battery before attempting to remove the unit manually.
- DO NOT use this product for other than its intended purpose.
- DO NOT use attachments other than those available from ION®.
- DO NOT alter this product in any manner; doing so is dangerous and will void the warranty.
- DO NOT continue to use this product in the event of mechanical failure.
- This product produces considerable cutting force that is felt by the operator. Make sure your feet are firmly planted and that the handles are held firmly while operating the auger.
- During operation, the unit could stop. If this happens, release the operating trigger. Reposition your feet and grip the handles tightly. Then squeeze operating trigger and lift the unit gently.
- When drilling ice holes, do not push down on the unit. If auger begins to drill slowly, blades may need to be sharpened or replaced.
- DO NOT discard the battery into trash can. Discard the battery according to your local, state, federal or country's regulations.

IMPORTANT

CHARGERS COME PACKAGED SEPARATELY IN THE AUGER CARTON. BATTERY MUST BE FULLY CHARGED BEFORE FIRST USE.



Safety and warning Decals

The following markings and labels are applied to the product, in addition to those shown in the rest of the original operating instructions.

Should any of the safety labels become unreadable because of being worn, faded, or otherwise damaged during the use of your auger, please use the part number information provided to order a replacement label. European customers can order from their local dealer and US customers can order by calling ION customer service. These safety labels are easily applied, and will act as a constant visual reminder to you and others who may use the equipment. Follow the safety instructions necessary for safe, effective operation of your auger.



ARDISAM, INC. 
1160 8th Avenue | Cumberland, WI 54829 | USA

Serial No.

11483 1/3

Model: **XXXXX** Type: **Ice Auger**
Mass: **5.9 kg**
Max. Operating Speed: **208 rpm**

<p>⚠ CAUTION</p> <p>FOR INDOOR USE ONLY. RISK OF ELECTRIC SHOCK, DRY LOCATION USE ONLY. RISK OF INJURY, CHARGE 36V LI-ION RECHARGEABLE BATTERIES. OTHER TYPES OF BATTERIES MAY BURST CAUSING INJURY TO PERSONS OR DAMAGE.</p>	<p>⚠ ATTENTION</p> <p>POUR UTILISATION À L'INTÉRIEUR SEULEMENT. RISQUES D'ÉLECTROCUTION, UTILISER DANS UN ENDROIT SEC SEULEMENT. UTILISER POUR CHARGER UNIQUEMENT LES ACCUMULATEURS DU 36V LI-ION. D'AUTRES TYPES D'ACCUMULATEURS POURRAIENT ÉCLATER ET CAUSER DES BLESSURES OU DOMMAGES. 13813</p>
--	--

<p>⚠ CAUTION</p> <p>RISK OF ELECTRIC SHOCK. READ AND UNDERSTAND THE OWNERS MANUAL BEFORE USE. ONLY USE IN DRY LOCATIONS. ONLY CHARGE ION #11251 RECHARGEABLE BATTERIES WITH THIS CHARGER. CHARGING BATTERIES NOT DESIGNED FOR THIS CHARGER CAN CAUSE PERSONAL INJURY OR DEATH. IF ANY PART OF THIS CHARGER IS DAMAGED COMPLETE CHARGER MUST BE REPLACED.</p> 	<p>⚠ ATTENTION</p> <p>RISQUE DE CHOC ÉLECTRIQUE. LIRE ET COMPRENDRE LE MODE D'EMPLOI AVANT UTILISATION. UTILISER UNIQUEMENT DANS DES ENDROITS SECS. CHARGER UNIQUEMENT DES BATTERIES RECHARGEABLES ION N°11251 AVEC CE CHARGEUR. LA CHARGE DE BATTERIES NON CONÇUES POUR CE CHARGEUR PEUT ENTRAÎNER DES BLESSURES CORPORELLES OU LA MORT. SI UNE QUELCONQUE PARTIE DE CE CHARGEUR EST ENDOMMAGÉE, LE CHARGEUR ENTIER DOIT ÊTRE CHANGÉ. 11826</p> 
---	---

⚠ WARNING





Auger blades are **EXTREMELY SHARP**. To avoid injury **USE CAUTION** when removing or replacing blades or guards.

LBLBPE

11817


⚠ WARNING

TO REDUCE THE RISK OF INJURY READ AND UNDERSTAND THE OWNERS MANUAL BEFORE USE. CRUSHING, DISASSEMBLY, SHORTING OF TERMINALS, OR BURNING   CAN CAUSE PERSONAL INJURY OR DEATH. IF BATTERY IS NOT USED CORRECTLY BURNS, EXPLOSION, AND OR FIRE ARE POSSIBLE. CHARGE ONLY WITH ION #11725 CHARGER. DO NOT DISCARD BATTERY INTO GARBAGE CAN.

⚠ AVERTISSEMENT

POUR RÉDUIRE LE RISQUE DE BLESSURE, VEILLER À LIRE ET À COMPRENDRE LE MODE D'EMPLOI AVANT UTILISATION. L'ÉCRASEMENT, LE DÉMONTAGE, LA MISE EN COURT-CIRCUIT DES BORNES OU LA COMBUSTION PEUVENT ENTRAÎNER DES BLESSURES CORPORELLES OU LA MORT. L'UTILISATION INCORRECTE DE LA BATTERIE PRÉSENTE DES RISQUES DE BRÛLURES, D'EXPLOSION ET D'INCENDIE. CHARGER UNIQUEMENT AVEC UN CHARGEUR 36 VOLTS ION N°11725.

⚠ WARNING



Failure to read, understand and follow all warnings and instructions listed could result in serious injury or death. Keep all body parts, clothing and foreign objects clear of rotating auger. Be sure auger is securely attached to powerhead during use. Remove battery from powerhead prior to transport. Do not use this auger as an anchoring device. Use this auger/powerhead as per provided instructions only. 11838

ION™
Electric Ice Augers

ioniceaugers.com
800-345-6007

A Division of Ardisam, Inc.
1160 8th Avenue
Cumberland, WI 54829

UNPACKING AND ASSEMBLY

To Assemble the Auger to the Powerhead

1. Remove the hex wrench that is attached with tape to the top of the auger shaft.
2. Insert the hex wrench into the bolt at the top of the auger. Remove the bolt by turning counter-clockwise.
3. Remove the protective plastic cap from the driveshaft. Insert the driveshaft of the powerhead into the collar of the auger assembly. **SEE FIGURE 1**
4. Align the hole in the auger shaft with the hole in the powerhead shaft. Tighten firmly, turning clockwise. There may be some wiggle in the connection; this is normal. If the connection is too tight, disassembly may be difficult.

To Charge the Battery for First Use

1. Connect the charger to standard 110 or 240-volt outlet; a red light should appear on the charger. Always connect charger to standard 110 or 240-volt wall outlet before inserting battery. **SEE FIGURE 2**
2. Charge the battery until the light on the charger turns solid green.
3. To disconnect the battery, remove the plug from the wall outlet then disconnect the battery from charger.

NOTE: Do not leave the battery on the charger after the charge is complete. Unplug the charger from the wall and remove the battery.



IMPORTANT

DO NOT LEAVE BATTERY ON POWERHEAD WHEN AUGER IS NOT IN USE. ALWAYS DETACH BATTERY WHEN NOT USING THE ICE AUGER.

To Install the Battery

1. Slide the battery onto the powerhead until it is fully seated.
2. Pull the battery retaining strap over the battery to keep the battery securely on the powerhead.

NOTE: This cannot be done before the battery is installed. The battery must be inserted onto the powerhead before placing the retaining strap over it.



IMPORTANT

BATTERY MUST BE FULLY CHARGED BEFORE FIRST USE.

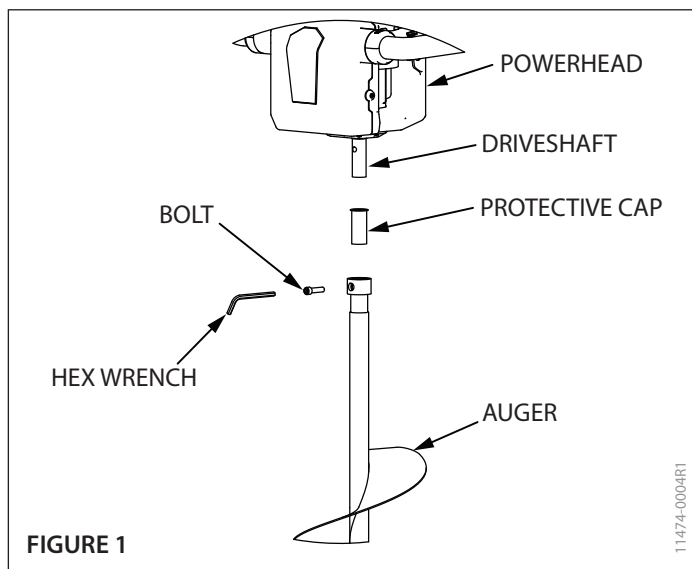


FIGURE 1

11474-0004RT

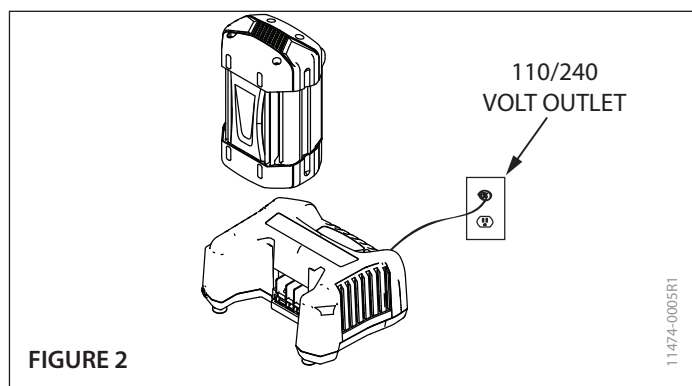


FIGURE 2

11474-0005RT

OPERATION

The ION is powered using the 36-volt battery supplied with the unit.

1. Make sure your footing is secure and that you have the unit in the vertical position firmly in your hands.
2. Depress the operating lock lever, then squeeze the operating trigger. Following a two-second safety delay, the auger will then start drilling. **SEE FIGURE 3**
3. To stop the auger, release the operating trigger.
4. When the auger is not in use, remove the battery.

NOTE: If you are planning to use the battery multiple times in a single outing, it is ideal to remove the battery and place in a warm location. This is especially important in cold weather conditions.

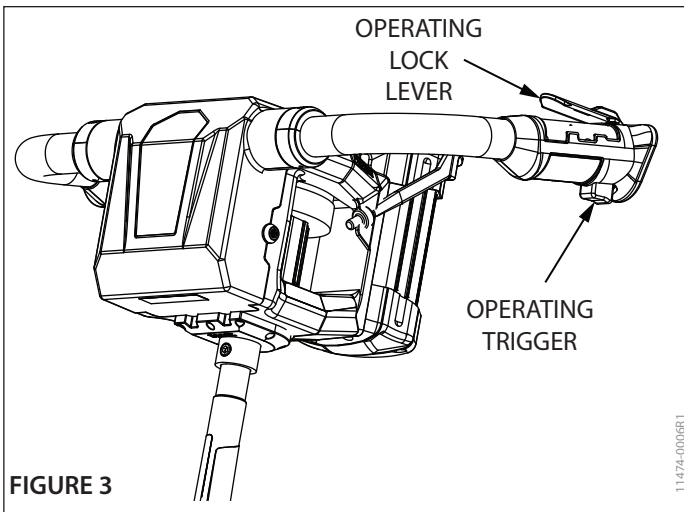


FIGURE 3

Reverse Switch Operation

To use reverse operation function to flush hole of unwanted debris do as follows: **SEE FIGURE 4**

1. To activate reverse function, depress the reverse switch and then depress the operating lock and operating trigger at the same time.
2. To stop auger release the operating trigger.

To Flush a hole, do as follows:

1. Place the auger half way down the hole with the auger starting in the hole. The top of the auger flight must be above the water and slush.
2. Activate reverse function and continue to lower the auger into the hole. The lower ring of the auger must exit the bottom of the hole.
3. After a few seconds of reverse operation, release the operating trigger.

NOTE: KEEP POWERHEAD CLEAR OF WATER. Water will come back up the hole and overflow.

4. Repeat the above steps three times to clear the hole.

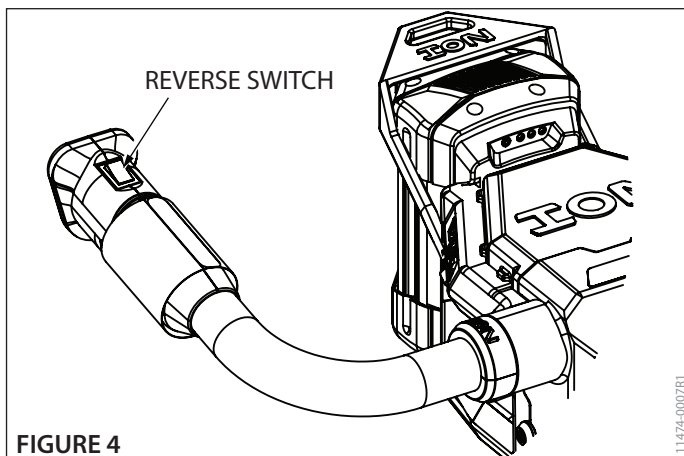


FIGURE 4

Battery Charging and Monitoring

1. Remove the battery retaining strap by pulling it towards the motor. **SEE FIGURE 5**
2. Remove the battery by sliding it off of the powerhead.
3. Plug the charger into a 110/240AC outlet.
4. Slide the battery into the charger.
5. The charge indicator light should blink green. **SEE FIGURE 6**
6. When indicator light is lit solid green, the battery is fully charged.
7. Once the battery has been fully charged, unplug the charger from the wall.
8. Remove the battery from the charger.

NOTE: Recharging the battery after each use is best for the life of the battery.

9. Place the battery back onto the powerhead when ready to use.

NOTE: Battery should be off of the powerhead when not in use.

10. Pull the battery retaining strap back over battery.

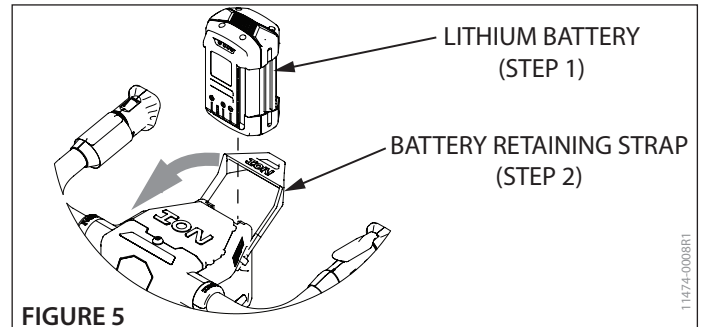


FIGURE 5

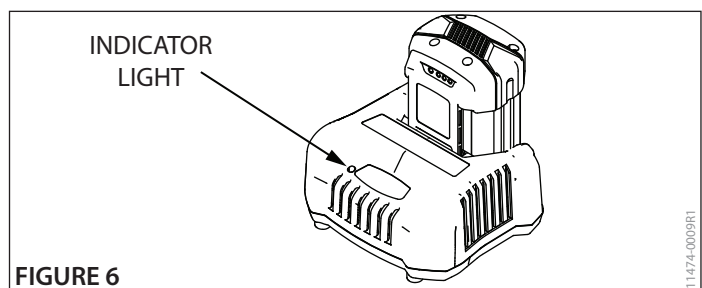


FIGURE 6

Charger Indicator Lights and Meaning

ACTION/COLOR	MEANING
Flashing green	Battery charging
Solid green	Battery fully-charged
Flashing red	Battery too hot
Solid red	Battery too cold

MAINTENANCE AND STORAGE

Read the maintenance schedule and observe these recommendations to extend the life of your electric auger.

Good maintenance is essential for safe, economical, and trouble-free operation. To help you properly care for your powerhead, the following pages include a maintenance schedule, routine inspection procedures, and simple maintenance procedures using basic hand tools. Other service tasks that are more difficult, or require special tools, are best handled by professionals and are normally performed by a technician or other qualified mechanic.

The maintenance schedule applies to normal operating conditions. If you operate your powerhead under unusual conditions, such as sustained high-load, or use in unusually wet conditions, consult ION® customer service for recommendations applicable to your individual needs and use.

Maintenance and Schedule

MAINTENANCE ITEM		Before each day's use	Every 500 complete charges	Yearly
Check bolts and nut		X		
Battery	Charge	X		
	Replace		X	
Sharpen/Replace Blades				X

Transporting Your Ice Auger

- Remove the battery if transporting the auger.

Long-Term Storage

If your ice auger will not be run for more than one month, prepare it for long-term storage.

- Charge the battery and leave it off of the unit. DO NOT leave the battery on the charger. Store the battery in temperatures between 40° F- 120° F.
- Remove the auger from the powerhead and apply a thin layer of grease to the driveshaft. **SEE FIGURE 7**
- Remove all debris from auger and powerhead.
- Attach the blade protector to bottom of auger.
- Keep in a dry, moisture-free area.



IMPORTANT

CONNECT THE BATTERY TO THE CHARGER EVERY THREE MONTHS TO ENSURE THAT IT MAINTAINS A FULL CHARGE DURING EXTENDED STORAGE.

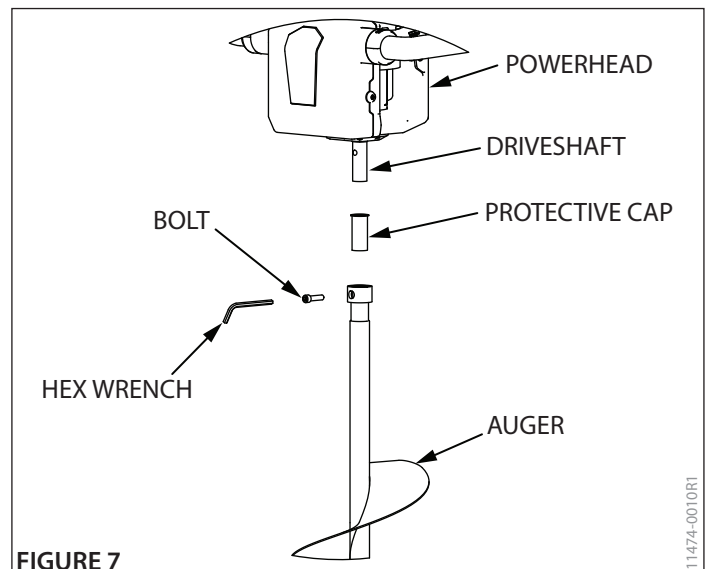


FIGURE 7

11474-0010R1



SERVICE AND REPAIR

Service Information

At Ardisam, we build quality and durability into the design of our products; but no amount of careful design by us, and careful maintenance by you, can guarantee a repair-free life for your auger. Most repairs will be minor, and easily fixed by following the suggestions in the troubleshooting guide in this section.

The guide will help you pinpoint the causes of common problems and identify remedies.

For more complicated repairs, contact ION customer service. A parts catalog is included in this section.

We will always be glad to answer any questions you have, or help you find suitable assistance. To order parts or inquire about warranty, call or write us at the address found on the next panel. **ORDERING REPAIR PARTS**

Parts may be obtained from the store where your auger was purchased or direct from the factory. To order from the factory, call, e-mail, or order online at www.ioniceaugers.com:

**ION® Ice Augers,
A Division of Ardisam, Inc.
1-800-345-6007
E-mail: info@ioniceaugers.com**

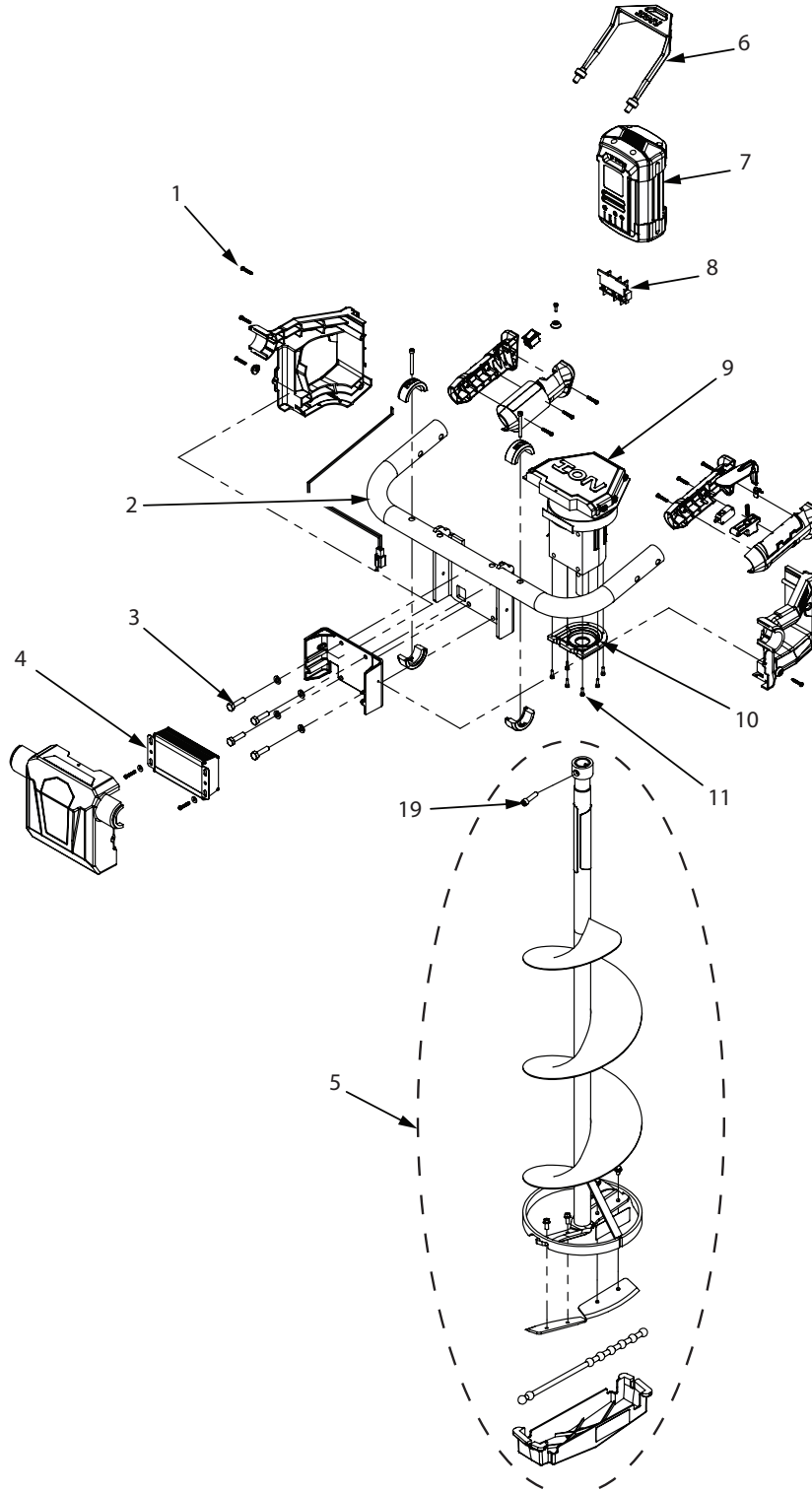
Please include the part numbers, part description, quantity, model number and serial number.

TROUBLESHOOTING

PROBLEM	POSSIBLE CAUSE	REMEDY/ACTION
Powerhead will not turn	1. Power switch not depressed completely	1. Hold switch for five seconds
Powerhead will not start and the battery indicates a full charge	1. Battery too cold	1. Remove the battery from the unit and place it in a warm location (inside a jacket pocket, vehicle or a small cooler with a warmer)
Powerhead starts, then stops	1. Battery low on power 2. Battery may be slightly under temperature	1. Charge battery 2. Remove the battery from the unit and place it in a warm location (inside a jacket pocket, vehicle or a small cooler with a warmer)
Auger jumps on ice	1. Blades damaged or sharpened incorrectly	1. Replace with new blades
Auger cuts slowly	1. Dull blades	1. Replace with new blades

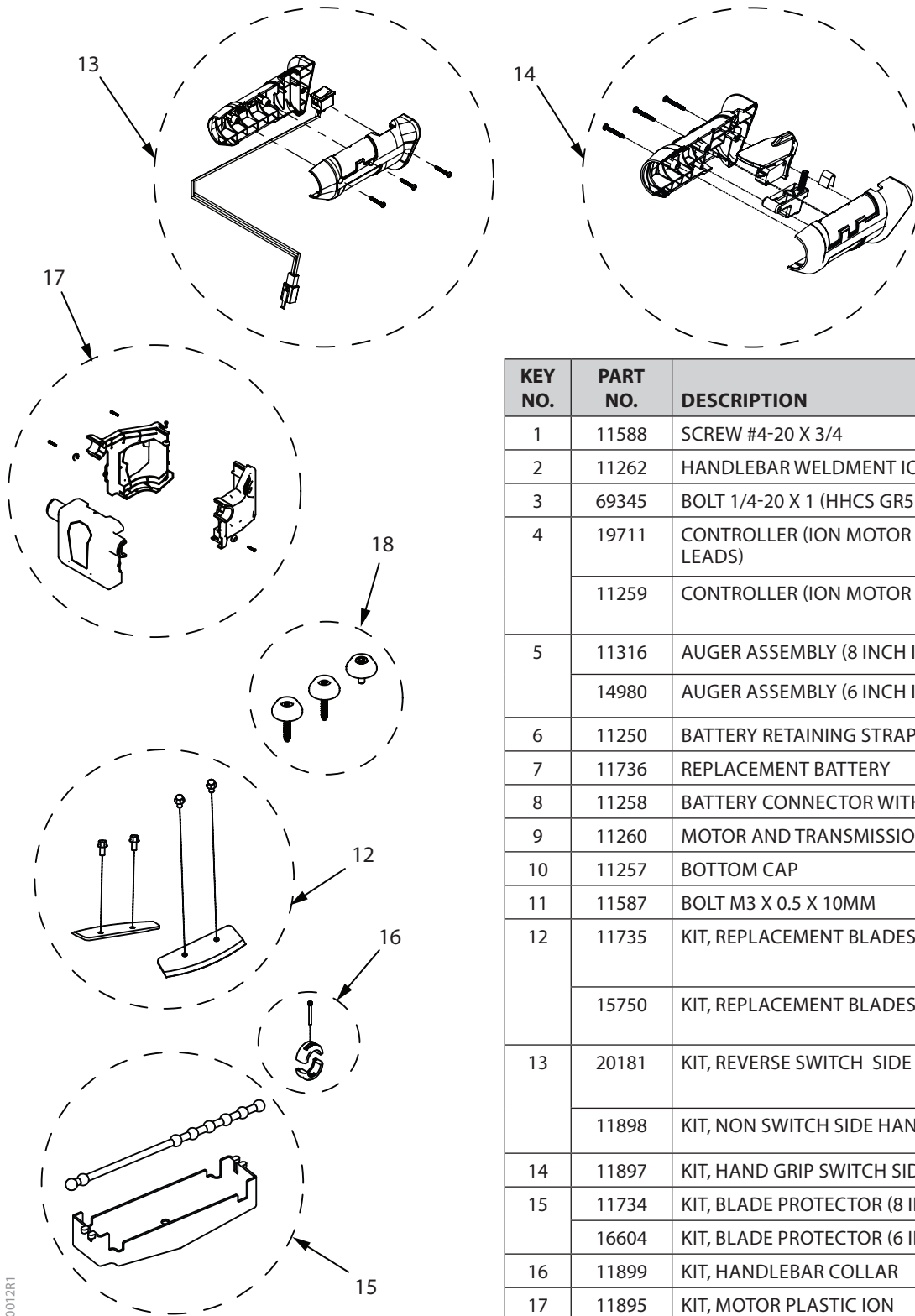
Contact ION® customer service at 800-345-6007 if above remedies fail.

ION[®] ILLUSTRATED PARTS BREAKDOWN



11474-001 1R1

ION® ILLUSTRATED PARTS BREAKDOWN



11474-0012R1

KEY NO.	PART NO.	DESCRIPTION	QTY.
1	11588	SCREW #4-20 X 3/4	12
2	11262	HANDLEBAR WELDMENT ION	1
3	69345	BOLT 1/4-20 X 1 (HHCS GR5 ZN)	4
4	19711	CONTROLLER (ION MOTOR WITH REVERSE LEADS)	1
	11259	CONTROLLER (ION MOTOR NON REVERSE)	1
5	11316	AUGER ASSEMBLY (8 INCH ION)	1
	14980	AUGER ASSEMBLY (6 INCH ION)	1
6	11250	BATTERY RETAINING STRAP	1
7	11736	REPLACEMENT BATTERY	1
8	11258	BATTERY CONNECTOR WITH WIRES	1
9	11260	MOTOR AND TRANSMISSION ION	1
10	11257	BOTTOM CAP	1
11	11587	BOLT M3 X 0.5 X 10MM	8
12	11735	KIT, REPLACEMENT BLADES (8 INCH ION)	1
	15750	KIT, REPLACEMENT BLADES (6 INCH ION)	1
13	20181	KIT, REVERSE SWITCH SIDE HAND GRIP ION	1
	11898	KIT, NON SWITCH SIDE HAND GRIP ION	1
14	11897	KIT, HAND GRIP SWITCH SIDE	1
15	11734	KIT, BLADE PROTECTOR (8 INCH ION)	1
	16604	KIT, BLADE PROTECTOR (6 INCH ION)	1
16	11899	KIT, HANDLEBAR COLLAR	2
17	11895	KIT, MOTOR PLASTIC ION	1
18	11896	KIT, CONE WASHER AND BOLT ION	1
19	1509	BOLT 1/4-20 X 1 SH BLK ZN	1



ION® ELECTRIC ICE AUGER

Warranty Terms and Conditions

PRODUCT WARRANTY: 2-YEAR LIMITED WARRANTY*

Ardisam, Inc., warrants this ION Electric Ice Auger under a two-year limited warranty to be free from defects in materials or workmanship or both for a period not exceeding twenty-four consecutive months from the date of original purchase by the first retail consumer or commercial end user. "Consumer use" means personal recreational use by a retail consumer. "Commercial use" or "commercial application" means all other uses, including use for commercial, income producing or rental purposes. Once a product has experienced commercial use, it shall thereafter be considered as a commercial use product for purposes of this warranty. This warranty applies to the original owner that provides a proof of purchase. The warranty is not transferable. The warranty period begins on the date of purchase by the first retail consumer or commercial end user, and continues for the twenty-four month consecutive period thereafter. Any unit used in a commercial application is covered for a period of 90 days after purchase. For the warranty to be valid, the product must be registered online at www.ioniceaugers.com, or the warranty card must be filled out and received by Ardisam, Inc., within 30 days of purchase. Ardisam, Inc. shall not be obligated to ship any repair or replacement product to any location outside of the United States of America or Canada.

BATTERY WARRANTY: 1-YEAR LIMITED WARRANTY*

Ardisam, Inc., warrants this ION battery under a one-year limited warranty to be free from defects in materials or workmanship or both for a period not exceeding twelve consecutive months from the date of original purchase by the first retail consumer or commercial end user. "Consumer use" means personal recreational use by a retail consumer. "Commercial use" or "commercial application" means all other uses, including use for commercial, income producing or rental purposes. Once a product has experienced commercial use, it shall thereafter be considered as a commercial product for purposes of this warranty. This warranty applies to the original owner that provides a proof of purchase. The warranty is not transferable. The warranty period begins on the date of purchase by the first retail consumer or commercial end user, and continues for the twelve month consecutive period thereafter. Any unit used in a commercial application is covered for a period of 90 days after purchase. For the warranty to be valid, the product must be registered online at www.ioniceaugers.com, or the warranty card must be filled out and received by Ardisam, Inc., within 30 days of purchase. Ardisam, Inc. shall not be obligated to ship any repair or replacement product to any location outside of the United States of America or Canada.

**This warranty applies only to products which have not been subjected to negligent use, misuse, uses other than those indicated in the product's owner's manual, alteration, accident, use of unauthorized parts, failure to perform periodic maintenance as specified in product's owner's manual, normal wear and tear, use of unauthorized parts or repairs performed at non-authorized service centers. There is no other expressed warranty. Implied warranties, including those of merchantability and fitness for a particular purpose, are limited to one year from purchase, or to the extent permitted by law. All other implied warranties are excluded. Liability for incidental or consequential damages are excluded to the extent exclusion is permitted by law. Ardisam, Inc. does not assume, and does not authorize any other person to assume for us, any liability in connection with the sale of our products. To obtain warranty service, you must have prior approval by calling our customer service department at 1-800-345-6007. If you choose to ship your product to Ardisam for warranty repair, you must first have prior approval from Ardisam by calling our customer service department for a return material authorization number (RMA#). Under these circumstances, all items must be shipped prepaid. Ardisam will at no charge, repair or replace, at their discretion, any defective part which satisfies all conditions stated above. Ardisam retains the right to change models, specifications and price without notice. Ardisam, Inc. shall not be obligated to ship any repair or replacement product to any location outside of the United States of America or Canada.*