

TOMAHAWK

ELECTRIC AUTOMATIC FLOOR SCRUBBER

MODEL NUMBER: TAS850e

Operations Manual



To reduce the risk of injury, the user must read and understand the Operator's Manual before using this product. Save these instructions for future reference.

Table of Contents

1. SAFETY INFORMATION	4
1.1 Fire Safety	5
2. OPERATING SAFETY	6
2.1 Service Safety	7
2.2 Usage Safety	8
3. EQUIPMENT PERFORMANCE	8
3.1 Electric Floor Scrubber Parts	8
3.2 Specifications	9
3.3 Modifications	10
3. ASSEMBLY	10
4.1 Installation of Squeegee Components	10
4.2 Squeegee Adjustment	10
5. OPERATION	10
5.1 Before You Start	10
5.2 Start Up	10
5.3 Control Panel	11
6. BATTERY CHARGING	12
6.1 Charging Precautions	12
7. TROUBLESHOOTING	12
7.1 Maintenance Record	14
8. REPLACEMENT PARTS	14
9. WARRANTY	15
9.1 Warranty Claims	15
10. SERVICE CENTERS	15
11. PARTS MANUAL	19

Register Your Equipment

Thank you for purchasing TOMAHAWK® equipment! Your product is covered by the TOMAHAWK® Warranty policy, but in order to activate your warranty, we need you to register your product. In addition to activating your equipment warranty, product registration will grant you access to important product updates, streamlined customer service and more.

INCLUDED WITH YOUR REGISTRATION

- ✓ Equipment Warranty Activation
- ✓ Product Updates
- ✓ Streamlined Customer Service
- ✓ Exclusive Discounts and Sales

STEPS TO REGISTER YOUR EQUIPMENT

1. Visit www.tomahawk-power.com
2. Choose “Product Registration” at the bottom of the page
3. Enter your equipment’s serial number to get started
4. Provide all required information
5. Submit Registration



Equipment Resources

TOMAHAWK® Customer Service doesn’t stop at checkout. We understand to keep a job-site running smoothly - the proper equipment, spare parts, instruction manuals, and more are needed at the drop of a hat. Visit www.tomahawk-power.com to gain access to the incredible resources below.

How To Video Library

More of a visual person? Visit our Video Library for equipment assembly instructions, troubleshooting tips, and more!

Found at the TOMAHAWK® Resource Center

Manual and Assembly Guide Library

Visit our Manual Library if you are looking for a lost operations manual or a particular spare part?

Found on the TOMAHAWK® Manuals Page

Service Requests

In need of a quick fix or a service center referral? Submit a Service Request and a TOMAHAWK® Technician will respond shortly to get you the help you need.

Choose “Service Request” at the bottom of www.tomahawk-power.com



This manual provides information and procedures to safely operate and maintain this model. For your own safety and protection from injury, carefully read, understand and observe the safety instructions described in this manual.

Keep this manual or a copy of it with the machine. If you lose this manual or need an additional copy, please contact TOMAHAWK® or visit www.tomahawk-power.com This machine is built with user safety in mind; however, it can present hazards if improperly operated and serviced. Follow operating instructions carefully. If you have questions about operating or servicing this equipment, please contact TOMAHAWK®.

The information contained in this manual is based on machines in production at the time of publication. TOMAHAWK® reserves the right to change any portion of this information without notice.

No part of this publication may be reproduced in any form or by any means, electronic or mechanical, including photocopying, without express written permission from TOMAHAWK®.

Any type of reproduction or distribution not authorized by TOMAHAWK® represents an infringement of valid copyrights and will be prosecuted. We expressly reserve the right to make technical modifications, even without due notice, which aim at improving our machines or their safety standards.

1. SAFETY INFORMATION

This manual contains DANGER, WARNING, CAUTION, and NOTE callouts which must be followed to reduce the possibility of personal injury, damage to the equipment, or improper service.



This is the safety alert symbol. It is used to alert you to potential personal injury hazards. Obey all safety messages that follow this symbol to avoid possible injury or death.



DANGER indicates an imminently hazardous situation which, if not avoided, will result in death or serious injury.



WARNING indicates a potentially hazardous situation which, if not avoided, could result in death or serious injury.



CAUTION indicates a potentially hazardous situation which, if not avoided, may result in minor or moderate injury.

1.1 Fire Safety

If your machine catches fire, turn off the electric supply. Using a dry powder or CO2 fire extinguisher, put out the fire. If the fire cannot be put out, keep away and call the fire department. If you are in any doubt about the safety condition of your machine, please consult TOMAHAWK®.

2. OPERATING SAFETY



Familiarity and proper training are required for the safe operation of equipment!

Equipment operated improperly or by untrained personnel can be dangerous! Read the operating instructions contained in both this manual and the engine manual and familiarize yourself with the location and proper use of all controls. Inexperienced operators should receive instruction from someone familiar with the equipment before being allowed to operate the machine.

2.1 General Notes

2.1.1 NEVER allow anyone to operate this equipment without proper training. People operating this equipment must be familiar with the risks and hazards associated with it.

2.1.2 NEVER use accessories or attachments for this equipment, which are not recommended by TOMAHAWK®. Damage to the equipment and/or injury to user may occur.

2.1.3 NEVER leave machine running unattended.

2.1.4 ALWAYS be sure operator is familiar with proper safety precautions and operation techniques before using machine.

2.1.5 ALWAYS wear hearing protection when operating equipment.

2.1.6 ALWAYS wear protective clothing appropriate to the job site when operating equipment.

2.1.7 ALWAYS wear hearing protection when operating equipment.

2.1.8 ALWAYS store equipment properly when it is not being used. Equipment should be stored in a clean, dry location out of the reach of children.

2.1.9 ALWAYS operate machine with all safety devices and guards in place and in working order. **DO NOT** modify or remove safety devices. **DO NOT** operate machine if any safety devices or guards are missing or inoperative.

2.1.10 ALWAYS read, understand, and follow procedures in Operator's Manual before attempting to operate equipment.

2.2 Service Safety



For your own personal protection and for the safety of those around you, please read and ensure you fully understand the following safety information. It is the responsibility of the operator to ensure that he/she fully understands how to operate this equipment safely. If you are unsure about the safe and correct use of this equipment consult your supervisor.

2.2.1 DO NOT attempt to clean or service machine while it is running. Rotating parts can cause severe injury.

2.2.2 ALWAYS replace worn or damaged components with spare parts designed and recommended by TOMAHAWK®.

2.2.3 ALWAYS keep machine clean and labels legible. Replace all missing and hard-to-read labels. Labels provide important operating instructions and warn of dangers and hazards.

2.2.4 Cordon off the work area and keep members of the public and unauthorized personnel at a safe distance.

2.2.5 Personal Protective Equipment (PPE) must be worn by the operator whenever this equipment is being used.

2.2.6 Make sure you know how to safely switch this machine OFF before you switch it ON in case you get into difficulty.

2.2.7 Always switch OFF before transporting, moving it around the site, or servicing it.

2.2.8 During use, the battery may become very hot, allow the battery to cool before touching it.

2.2.9 NEVER pull or guide the machine using the cable and never pull on the cable to disconnect the plug.

2.2.10 DO NOT operate the machine when you are ill, feeling tired, or when under the influence of alcohol or drugs.

2.2.11 Ensure that any trailing cable is protected against damage and not liable to be tripped over or trapped underneath the machine.

2.2.12 DO NOT use this machine in dangerous conditions.

2.3 Usage Safety

2.3.1 The voltage indicator must not be charged below 21V. Charging it below this level can severely damage the battery, reducing its capacity, shortening the machine's operating time, and potentially preventing the battery from charging altogether.

2.3.2 Before using the machine, discharge the sewage and fill the clean water tank with fresh water. If sewage is not discharged before adding clean water and using the machine, its performance will decline. This may cause slower operation, reduced suction power, and, in the worst case, overheating of the motor, which can damage the machine's main unit.

2.3.3 NEVER operate the machine without water. Using the machine without water can cause dry dust to enter the sewage tank and reach the suction motor through the suction port, leading to reduced motor performance.

2.3.4 DO NOT drive the machine on surfaces similar to isolation belts. Prolonged use on such surfaces can damage the machine's sheet metal parts and drive axle.

2.3.5 When the machine approaches a steep road, turn off the suction motor switch. This prevents sewage from splashing into the suction port, which could damage or burn the suction motor.

2.3.6 After using the machine, discharge the sewage immediately. Sewage can be acidic or even highly corrosive. Leaving it in the machine for a long time can corrode the sewage pipe and shorten its service life.

2.3.7 If the machine will not be used for a long time, fully charge it and store it in a storage room. Avoid exposing the machine to air drying and direct sunlight.

2.3.8 If the machine will not be used for more than 15 days, fully charge the battery, disconnect the battery power cord, and store the machine in a dry, shaded storage room. This prevents the battery from discharging completely. Before disconnecting the battery power cord, turn off the machine switch and remove the key to avoid electric shock.

2.3.9 ONLY use manufacturer supplied parts for maintenance.

2.3.10 ONLY trained adults that have read and understand the operation manual should operate the machine.

2.3.11 Before cleaning the machine, turn off the key switch. Do not use a water hose to flush the battery, motor, wiring harness, controller, computer board, or other sensitive components.

2.3.12 After using the machine, allow the battery to cool down before charging. Do not charge the battery for more than 10 hours. If the machine will be left unattended during charging, consider using a smart timer socket for added safety.

2.3.13 The machine's battery must be charged using the original charger provided by our company. Do not use fast charging, as high-voltage or low-voltage charging can cause the battery to bulge.

2.3.14 The machine's battery must be charged with the original charger provided by our company. Do not use fast charging, as high-voltage or low-voltage charging can cause the battery to swell.

2.3.15 When the machine approaches a steep road, turn off the suction motor switch. This prevents sewage from splashing into the suction port, which could damage or burn the suction motor.

2.3.16 Then the machine is operating with a cleaning agent, a defoamer must be added to the sewage tank to prevent foam buildup. This will stop bubbles from being sucked into the suction motor, which could damage or burn the motor.

2.3.17 The correct sequence for starting the machine is as follows: main power switch → swipe switch → suction switch. Reversing this order can cause a sudden surge in current, which may damage or burn out the voltage display meter

2.3.18 The correct sequence for starting the machine is as follows: main power switch → swipe switch → suction switch. Reversing this order can cause a sudden surge in current, which may damage or burn out the voltage display meter

2.3.19 If the machine will not be used for more than 15 days, fully charge the battery, disconnect the battery power cord, and store the machine in a dry, shaded storage room. This prevents the battery from discharging completely. Before disconnecting the battery power cord, turn off the machine switch and remove the key to avoid electric shock.

2.3.20 DO NOT frequently turn the operating switch on and off while the machine is in continuous use. This can cause excessive starting currents, which will accelerate the aging of the motor insulation and reduce the motor's service life.

3. EQUIPMENT PERFORMANCE

3.1 Electric Floor Scrubber Design

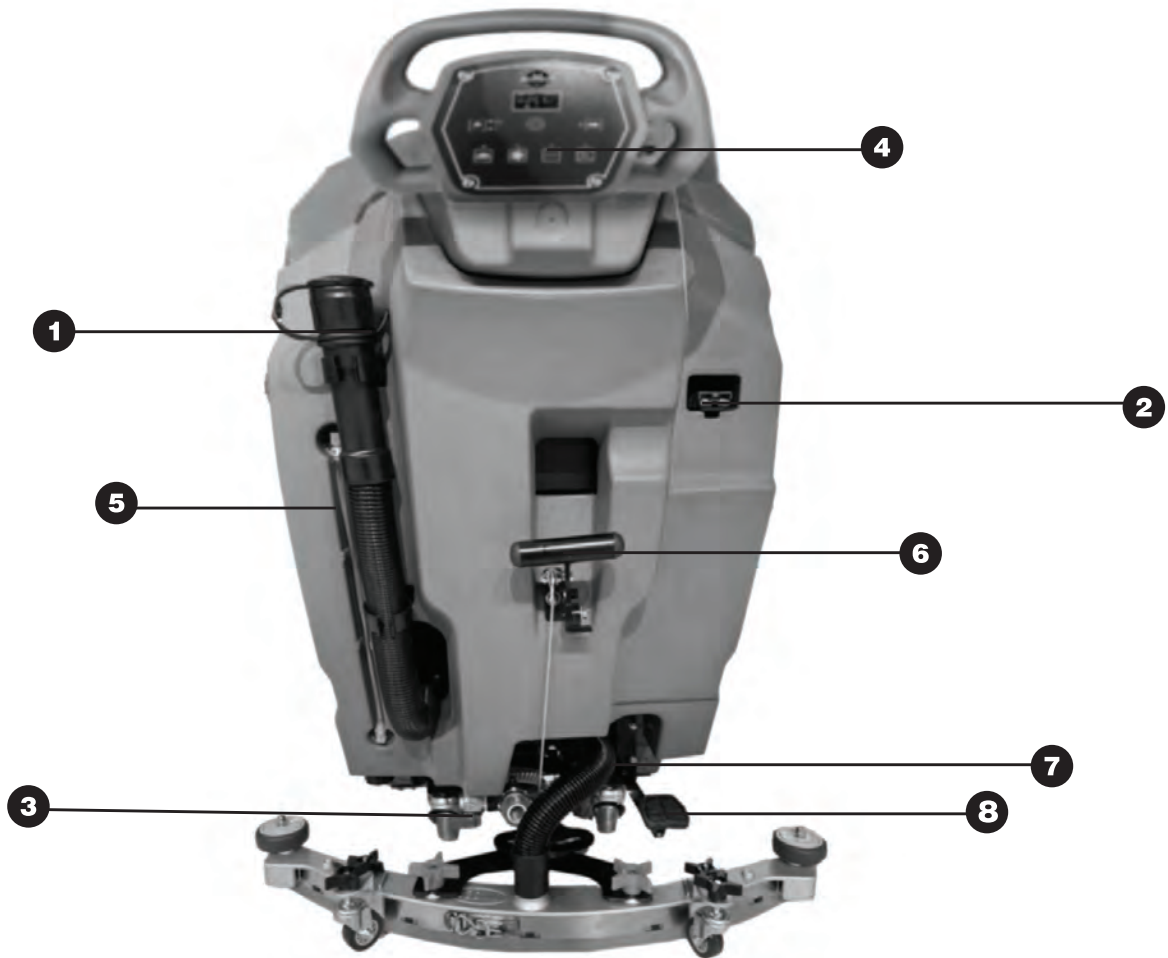
The TOMAHAWK® TAS850e is designed with the intention of revolutionizing the way we clean our floors. The intended use of the TOMAHAWK® TAS850e is to provide a efficient cleaning solution for various surfaces, including hardwood floors, tiles, and laminate. With its motorized spinning brushes, the TOMAHAWK® TAS850e effortlessly removes dirt, grime, and stubborn stains, leaving floors sparkling clean.

3.2 SPECIFICATIONS

MODEL	TAS850e
Maximum Work Efficiency	2000 m ² /h
Voltage/Power	24V/100Ah
Brush Width	20 in (510mm)
Scrubbing Width	32.67 (830mm)
Brush Motor	550W
Suction Motor	500W
Solution Tank	14 gal (55L)
Sewage Tank	16 gal (60L)
Forward Speed	0-3.7 mph (0-6km/h)
Dimensions	55.11*32.6*41.33 (1400*830*1050mm)
Net/Gross Weight	397/441 lb (180/200kg)
Working Time	3hr

3.3 Electric Floor Scrubber Parts

1. Drain Pipe
2. Charging Port
3. Water Valve Adjustment Switch
4. Control Panel
5. Water Line
6. Squeegee Handle
7. Sewage Vacuum Pipe
8. Brush Plate Pedal
9. Water Intake



3.4 Modifications

Any modifications made to the TOMAHAWK® TAS850e will void the manufacturer warranty. Contact TOMAHAWK® customer service prior to any attempt at modification of machine.

4. ASSEMBLY

The machine is packaged in five parts when it leaves the factory: the body (including the water tank, rack, and brush plate fixing components), squeegee components, brush plate, and charger.

4.1 Installation of Squeegee Components:

- Unpack the package and remove the squeegee assembly, as shown in the figure below.
- Attach the squeegee head to the rear of the machine and tighten the cross handle to secure it.

4.2 Squeegee Adjustment:

- If the pressure of the squeegee strip is too low and there is too much resistance:
- Unscrew the fixing screw of the head wheel.
- Lower the small wheel and visually check the position of the water-absorbent tape, adjusting it to the ideal position.
- Tighten the screw to secure the adjustment.
- Repeat the steps for the other head wheel to adjust its height to the suitable position.

5. OPERATION

5.1 Before You Start

Before using the machine for the first time, adjust the equipment for optimal cleaning performance. A routine inspection is required before each use:

- Check if the sealing strip of the recovery tank cover is intact.
- Ensure that the sewage tank is cleaned out.

5.2 Start Up

5.2.1 Inserting the Suction Pipe:

- Insert one end of the sewage vacuum pipe into the inlet of the recovery tank and the other end into the outlet of squeegee strip.

5.2.2 Filling with Water:

- Lift the lid of the solution tank.
- Pour clean water into the clean water tank by first placing the water pipe into the tank, then opening the water valve. The water temperature should not exceed 50°C. The water level can be checked through the water level pipe.
- Add detergent as needed based on the cleaning requirements.
- Close the water tank cover.

NOTE: Once filled lower squeegee then walk forward to used desired setting.

5.2.3 Water Volume Adjustment:

- Open the cover of the clean water tank.
- Pour clean water into the clean water tank (first place the water pipe into the tank, then open the water valve. The water temperature should not exceed 50°C, and the water level can be checked through the water level pipe).
- Add detergent according to the cleaning needs of the ground.
- Close the water tank cover.
- Open the drain valve and adjust the water volume as necessary based on the actual needs.

5.3 Control Panel



Vacuum switch: Turn on this switch, the suction motor starts to work.

Main Power Switch: Start this switch, the device is in the power-on state.

Broom Switch: Press this switch to start the brush.

Battery Indicator: Displays the power of the device, and the power will increase during the charging process.

Lamp Switch: Turn on the front light when clean the dark area.

Eco Modes: Enable a reduction in the amount of water, detergent and pressure delivered.

6. BATTERY CHARGING

NOTE: To extend the battery's lifespan and ensure optimal performance, charge the battery after the machine has been used for at least 30 minutes. Avoid leaving the battery uncharged for long periods. The following charging instructions apply to the charger that comes with this machine. Be sure to use the specified charger to prevent battery damage.

Battery Specifications	
Charger Type	Lead-Acid Battery Charger
Output Voltage	24v
Output Current	15a
Automatic Power-Off Circuit	
Suitable for Deep Cycle Battery Charging	

6.1 Charging Precautions:

- If the digital meter shows a reading below 21, charge the battery immediately.
- To charge, insert the charger into the machine's charging port and connect it to a 220V power supply.
- Ensure the machine is in a well-ventilated area during charging. Open the side of the recovery tank for better ventilation.
- When the digital meter shows a reading of 26, charging is complete.

7. TROUBLESHOOTING

Problem	Reason	Solution
Low sewage recycling efficiency	Recovery tank is full	Drain the sewage tank
	Absorbent tape wear	Replace absorbent tape
	Blocked suction pipe	Clear the clogged debris
	Suction motor failure	Please contact the service center
	Damaged recovery tank seal	Replace the sealing strip

Problem	Reason	Solution
Operating time reduced	The battery is defective	Replace the battery
	Battery charging failure	Repair or replace the charger
Little or no water outflow	The clean water tank filter or solution pipe is clogged	Clean the clear water tank filter
	The flow rate setting of the water flow control knob is too low	Adjust the water flow control knob

Problem	Reason	Solution
The machine cannot be operated	The battery is out of power	Battery charging
	Battery failure	Replace the battery
	Loose battery wiring	Tighten the battery wiring
	Main fuse blown	Replace the fuse
Disk brush motor does not work	The brush head rises off the ground	Lower the brush head
	The battery fuel gauge is locked and does not start	Battery charging
	Disk brush motor circuit breaker triggers a trip	Reset brush circuit breaker button
	Brush (up/down) switch failure	Please contact the service center
	Motor of carbon brush wear	Please contact the service center
The suction motor does not work	The squeegee lifts off the ground	Lower the squeegee
	Suction motor fuse blown	Replace the fuse
	Water suction motor or wiring failure	Please contact the service center
	The carbon brush of the suction motor is damaged	Please contact the service center

7.1 Maintenance Record

TOMAHAWK® tools are assembled with care and will provide years of service when properly maintained. Preventative maintenance and routine service are essential to the long life of your equipment. Adhere to reading through this manual thoroughly. You will find that you can do some of the regular maintenance yourself. However, when in need of parts or major service, be sure to contact a TOMAHAWK® Technician. For your convenience we have provided this space to record relevant data about your TOMAHAWK® equipment.

Invoice Number:		Type of Machine:	
Date Purchased:		Dealer Name:	
Serial Number:		Dealer Phone:	

REPLACEMENT PARTSUSED					MAINTENANCE LOG	
PART NO.	DESCRIPTION	QTY	COST	DATE	DATE	OPERATION

8. REPLACEMENT PARTS

8.1 For replacement parts and technical questions visit www.tomahawk-power.com

8.2 Not all equipment components are available for replacement. The illustrations within this manual are a convenient reference to the location and position of parts in the assembly sequence.

8.3 When ordering parts, the following will be required: equipment model number, serial number/lot, date code, and description.

9. EQUIPMENT WARRANTY

Your new TOMAHAWK® equipment is warranted to the original purchaser for a period of one-year (12 months) from the original date of purchase. The TOMAHAWK® warranty is against defects in design, materials and workmanship.

The following are not covered under the warranty:

9.1.1 Damage caused by abuse, misuse, dropping or other similar damage caused by or as a result of failure to follow assembly, operation or user maintenance instructions.

9.1.2 Alterations, additions or repairs carried out by persons other than TOMAHAWK® or their recognized agents.

9.1.3 Transportation or shipment costs to and from TOMAHAWK® or their recognized agents, for repair or assessment against a warranty claim, on any machine.

9.1.4 Materials and/or labor costs to renew, repair or replace components due to fair wear and tear.

9.1.5 TOMAHAWK® and/or their recognized agents, directors, employees or insurers will not be held liable for consequential or other damages, losses or expenses in connection with or by reason of or the inability to use the machine for any purpose.

9.2 Warranty Claims

Before submitting any warranty claim, you will need to register your new TOMAHAWK® equipment through www.tomahawk-power.com or email support@tomahawk-power.com.

Follow the steps on page 3 or scan this QR codes to complete the equipment registration. After registration is complete, all warranty claims should firstly be directed to TOMAHAWK® through the online Service Request form found at www.tomahawk-power.com/pages/service-request.



10. SERVICES CENTERS

Our service centers are equipped to handle your equipment maintenance and repair needs efficiently. With a network of authorized local service locations, you can find expert support and genuine parts needed to keep your equipment running smoothly. All locations are listed on the webpage <https://tomahawk-power.com/pages/find-a-service-center>.

For Service Call (866) 577- 4476



CLEAN MORE IN LESS TIME

For big areas and busy schedules, Tomahawk Floor Scrubbers cover a wider path to reach more surface area so you can finish cleaning faster around indoor and outdoor spaces and on wet or dry surfaces!



Item #: TMOP18e

ELECTRIC FLOOR SCRUBBER CLEANER

www.tomahawk-power.com





WORK SMARTER NOT HARDER

For big areas and busy schedules, Tomahawk Push Sweepers cover a wider path to reach more surface area so you can finish sweeping faster around indoor and outdoor spaces and on wet or dry surfaces!



Item #: TOS38

**38" COMMERCIAL
PUSH SWEEPER**

www.tomahawk-power.com 

TOMAHAWK

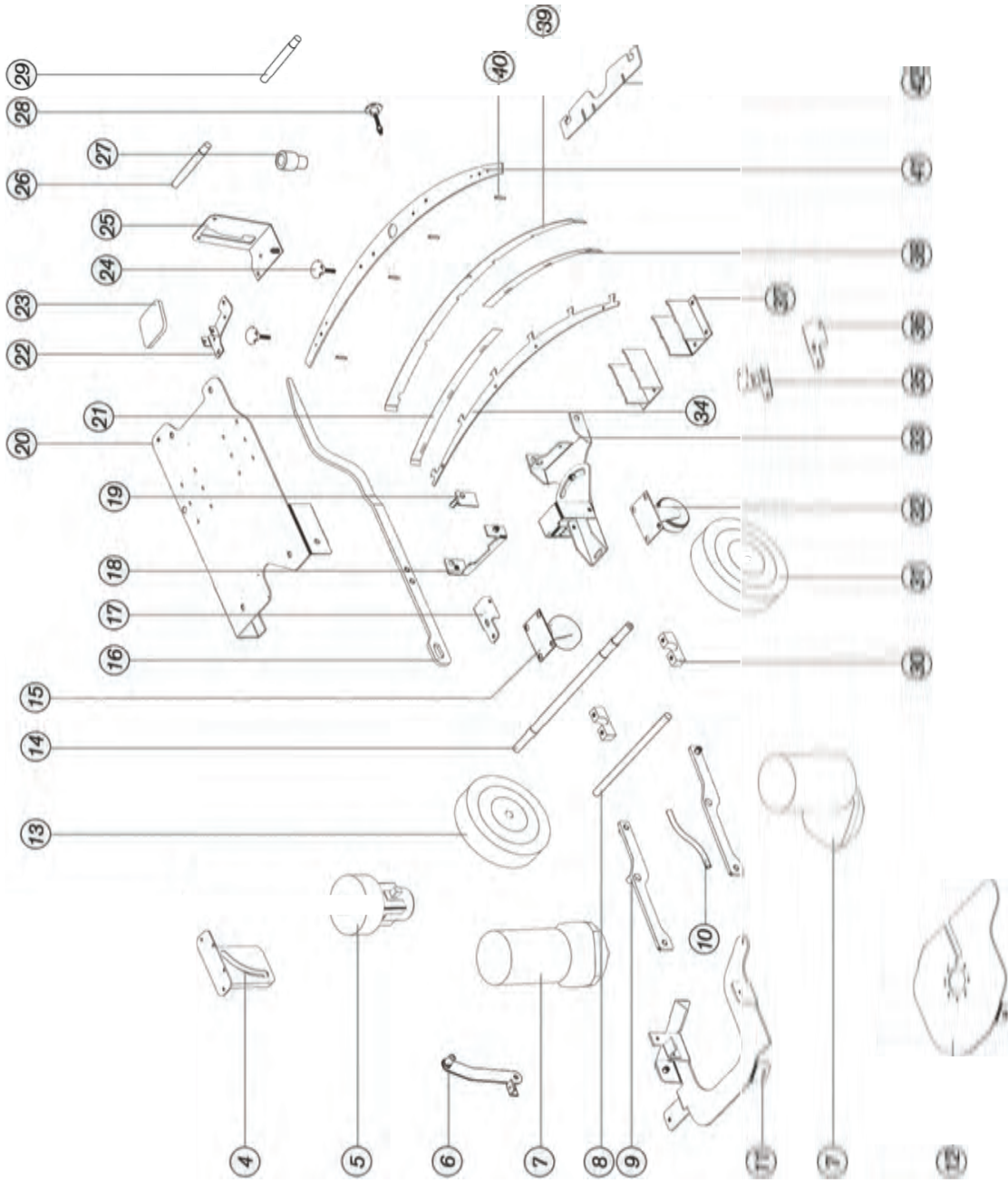
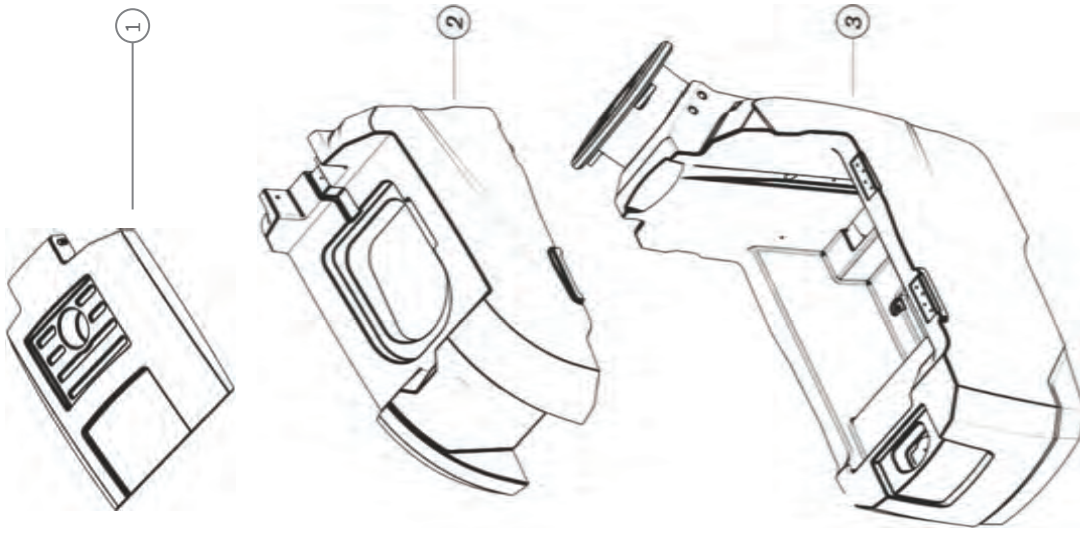
ELECTRIC AUTOMATIC FLOOR SCRUBBER

MODEL NUMBER: TAS850e

Parts Manual



To reduce the risk of injury, the user must read and understand the Operator's Manual before using this product. Save these instructions for future reference.



Ref	Parts Name
1	Water tank cover
2	Sewage water tank
3	Clear water tank
4	Disc brush lifting assembly
5	Suction motor
6	Disc brush lifting assembly1
7	Disc Brush motor
8	Connecting bearings
9	Disc brush lifting assembly 3
10	Connecting rod
11	Disc Brush motor Fixing Parts
12	Flange
13	Right wheel
14	Linkage shaft
15	Universal wheel
16	Disc brush lifting assembly 4
17	Anti-collision wheel fixing assembly 1
18	Universal wheel fixing assembly 2
19	Universal wheel fixing assembly 3
20	Chassis
21	Suction rake bead

Ref	Parts Name
22	Foot pedal assembly
23	Foot pedal
24	Plum Blossom Knob 2
25	Foot pedal assembly 2
26	Pin
27	Suction port
28	Plum Blossom Knob
29	Pin
30	Chassis accessories
31	Left wheel
32	Universal wheel
33	Suction rake lifting assembly
34	Suction rake bead 2
35	Chassis assembly
36	Universal wheel fixing assembly 4
37	Universal wheel fixing assembly 5
38	Suction rake bead 3
39	Rubber
40	Suction rake plastic parts
41	Suction rake
42	Suction rake assembly

TOMAHAWK

Equipment Guide

COMPACTION



Wheel Kit Available



Rammers

Part#:	Battery Powered Option Available
TR68H	3,550 lbs/sq ft, Honda GX120
JX60H	3,350 lbs/sq ft, Honda GX100
eJX60H	3,350 lbs/sq ft, Honda GXE2.0S



Wheel Kit Available

Forward Plate Compactors

Part#:	Battery Powered Option Available
TPC80H	3,000 lbs/sq ft, Honda, 21"x17" Plate
TPC85H	3,200 lbs/sq ft, Honda, 23"x17" Plate
TPC90H	3,400 lbs/sq ft, Honda, 22"x20" Plate



Reverse Plate Compactors

Part#:	
TPC100H	3,500 lbs/sq ft, Honda, 19"x14" Plate
TPC170H	7,000 lbs/sq ft, Honda, 28"x20" Plate
TPC400H	11,690 lbs/sq ft, Honda, 32"x22" Plate

CONCRETE



Power Screens

Part#:	Battery Powered Option Available
TVSA-H	6-16 ft Magnesium Blades Honda GX35, Adjustable Handles
eTVSA	6-16 ft Magnesium Blades 36V/5 Ah Battery, Adjustable Handles



Concrete Sprayers

Part#:	TCS6.5 Adjustable from 0-450 PSI
	Handles 30% + Solids, 1.8 HP 2 Stroke Motor, 24" Brass Wand 0.5 GPM, Fan Nozzle Included, Spray 15,000 ft ² in 10 Minutes



Early Entry Saws

Part#:	
TFS6H	6" Blade Diameter, Blade Compatibility, Honda GX120
TFS10H	10" Blade Diameter, Self Propelled, Blade Compatibility, Honda GX270/GX390

TROWELS



Porta-Trowels

Part#:	JXPT30T Lightweight at 40 lbs
	Adjustable 18 ft Extension Bull Float Poles 30" Diameter, 4-Blade Assembly Adjustable Blade Pitch from 0-28°



Walk Behind Trowels

Part#:	Items Listed Includes Combo Blades
TPT24H	2 ft Edger, Honda GX160, 0-28° Blade Pitch
TPT36H	3 ft, Honda GX160/GX270, 0-28° Blade Pitch
TPT46H	4 ft, Honda GX270/GX390, 0-28° Blade Pitch



Ride on Trowels

Part#:	
TRT46V	8 ft Hydraulic Steer, 35 HP Vanguard, CVT Clutch, 180 RPM
TRT60V	10 ft Full Hydrostatic, 74 HP Hatz Diesel

HAVE QUESTIONS?

Contact us. *We're here to help!*

(866) 577-4476

Email us at sales@tomahawk-power.com



TOMAHAWK

Equipment Guide

GENERATORS

QUIET INVERTER SERIES



58 db

2,000 - 3,300 Watt Series

TG2000i	2,200w Max / 2,000w Rated
TG3000i	3,300w Max / 3,000w Rated, 120/220V, 30 AMP Twist Lock Run Time 8 Hrs @ 50% Load CARB Compliant, GFCI 120v

QUIET INVERTER SERIES



EPA
OPTION AVAILABLE

62 db

4,500 - 5,500 Watt Series

TG4500i	4,500w Max / 3,800w Rated
TG5500i	5,500w Max / 5,000w Rated, 120/220V Run Time 8 Hrs @ 50% Load CARB Compliant, GFCI

QUIET INVERTER SERIES



62 db

10,500 Watt Series

TG9000i	10,500w Max / 8,500w Rated Voltage Selector, 120/220V Run Time 14.5hrs @ 25% Load CARB Compliant, GFCI, CO Detector
----------------	--

FLOORING

Assorted Blade Choices



Grinders and Scrapers

Part#:	
TGDR10	10" Disc, 120V, 1/32" Per Pass, 11 AMP, 1.5 HP, 1,725 RPM
TSCP8	8" Blade, 120V, 11 AMP, 3/4 HP, 1,725 RPM, Carpet & Tile Remover

Assorted Blade Choices



HONDA
ENGINES

Concrete Scarifier

Part#:	TSCAR-8H	*Battery Powered Option Available
Honda GX160 Engine, Scarifies 350 - 500ft ² /hr OSHA Compliant Vacuum Port 8" Carbide Tungsten Drum Kit, 1/8" Per Pass		

Assorted Brush Choices



Floor Sweepers

Part#:		*Battery Powered Option Available
TOS38	38" Working Width, Triple Broom System, 14.5 Gallon	
eTOS30	30" Working Width, Battery Powered Triple Broom System, 13.5 Gallon	

OUTDOOR POWER

HONDA
ENGINES



Trash Water Pumps

Part#:	
TW3H	3" Pump, Honda GX270, 375 GPM, Elevation: 89ft, Suction: 25ft
TW4H	4" Pump, Honda GX390, 581 GPM, Elevation: 92ft, Suction: 26ft



Power Buggy

Part#:	TBUGGY300e	48V-20Ah Battery
Handles up to 8 cu ft or 660 lbs. Bucket Capacity Hydraulic Bucket with 92° Tilt, 8 Hour Run Time Snow Plow Attachment & Bucket Extender Available		

HONDA
ENGINES



Welder Generators

Part#:	6010-7024 Rods Compatible	
TWG120A	120 Amp Welder, 60% Duty Cycle, 2000w, Includes Wheel Kit	
TWG210A	210 Amp Welder, 60% Duty Cycle, 2000w, Includes Wheel Kit	

72 db

ASSEMBLED IN THE
USA
PARTS SOURCED GLOBALLY

(866) 577-4476

www.tomahawk-power.com



Power Your World

Tomahawk understands to keep a job-site running smoothly the proper equipment and spare parts are needed at the drop of a hat. With same day shipping and faster delivery times, count on Tomahawk to keep you powered throughout the day! With long lasting parts and engines, Tomahawk equipment will be the star of your fleet for years to come. Visit www.tomahawk-power.com to get started today!

TOMAHAWK

TOMAHAWK®, LLC
San Diego, CA

Sales Support
(866) 577-4476
sales@tomahawk-power.com

Equipment Support
(866) 577-4476
support@tomahawk-power.com

www.tomahawk-power.com



FACEBOOK
facebook.com/TomahawkPowerUSA

YOUTUBE
youtube.com/TomahawkPower

INSTAGRAM
[@tomahawkpower](https://instagram.com/tomahawkpower)