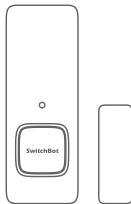


文件名称: Contact Sensor说明书英文版设计	设计师: ZBH	完成时间: 2021/07/21
版本号: Contact Sensor-EN-2107	成品尺寸: 60mm X 60mm	
材质和工艺: 封面 157g铜板 内页 128g铜版纸, 骑马钉		
更改内容: 新增NCC警语认证, 文案内容调整。		
备注: 此页从虚线下开始印刷, 表格不印刷		

SwitchBot Contact Sensor

User Manual

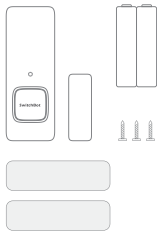


www.switch-bot.com

Contents

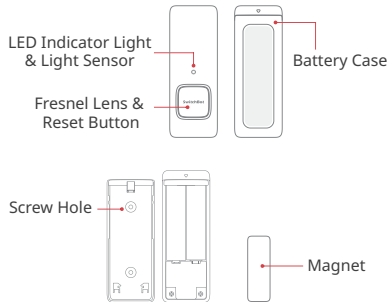
1. In the Box	01
2. Device Instruction	02
3. Preparation	03
4. Getting Started	04
5. Safety Information	05
6. Detection Range	06
7. Light Sensor	08
8. How to Use	09
9. Battery Replacement, Firmware Update and Factory Reset	15
10. Q&A	16
11. Specification	18
12. Return and Refund Policy	19
13. Contact and Support	20

1. In the Box



- Contact Sensor
- Magnet
- AAA Batteries x 2
- User Manual
- Screw Pack
- Sticker
(adhered to Contact Sensor)
- Sticker
(adhered to Magnet)

2. Device Instruction



3. Preparation

- A smartphone or tablet with Bluetooth 4.2 or above
- Download the SwitchBot app
- Create a SwitchBot account and sign in
- (Optional) If you intend to use the Cloud Service feature, you need to set up a SwitchBot Hub Mini (sold separately) and connect your phone to the internet



03

4. Getting Started

- 1 Remove the Battery Case. Install two AAA batteries into the battery box following the "+" and "-" signs. Then put the Battery Case back.
- 2 Open the SwitchBot app and sign in.
- 3 On the app, tap the "+" icon on the top right of the homepage. Tap the "Contact Sensor" icon and follow the instructions to complete the setup.



04

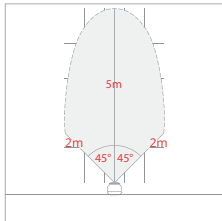
5. Safety Information

- Keep the device away from humid or hot environments.
- Remove the batteries when not used for long period of time.
- Do not attempt to disassemble, repair, or modify the device.
- Do not use any other batteries than those recommended.

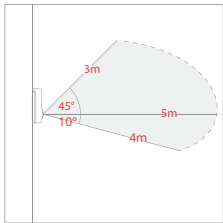
6. Detection Range

Maximum Detection Distance: 5m

Maximum Detection Range (Horizontal): 90°



Maximum Detection Range (Vertical): 55°



The data above is obtained from lab experiments conducted under 77°F (25°C).

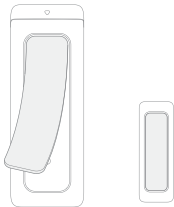
7. Light Sensor

Light Sensor is used for detecting whether it is bright or dark in the target environment. You can define the threshold for being bright or being dark in the app. Navigate to the Settings page of Contact Sensor in the app for more information.

8. How to Install

Adhere to a door or a window

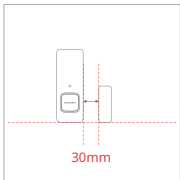
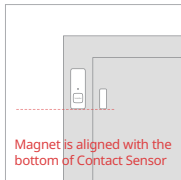
Peel off the protective film from the Contact Sensor and Magnet.



Line up Contact Sensor and Magnet on the door or window and make sure the Magnet is aligned with the bottom of Contact Sensor.

Stick the Contact Sensor on the door/window and Magnet on the frame or the other way around. Make sure the gap between the sensor and the magnet is less than 30mm when the door or window is closed.

Apply pressure to the Contact Sensor and Magnet for 60 seconds so that they are firmly attached.



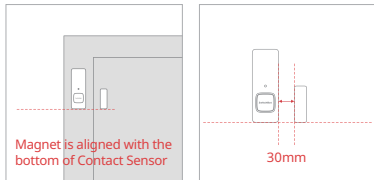
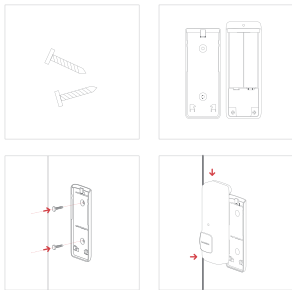
Mount to a surface using screws

Remove the Battery Case from Contact Sensor. Mount the Battery Case to the target surface using the screws provided. You don't need to peel the protective film off during this process. Install the Contact Sensor back to the Battery Case, that has been mounted to the target surface.

Line up the Contact Sensor and the Magnet on the door or window and make sure the Magnet is aligned with the bottom of the Contact Sensor.

Peel the protective film off Magnet and stick it to the surface near the Contact Sensor. Make sure the gap between the sensor and the magnet is less than 30mm when the door or window is closed.

Apply pressure to Magnet for 60 seconds so it is firmly attached.



Important Notice

- Make sure the target surface is dry and clean.
- Avoid any heat sources, such as light bulbs.
- Avoid facing towards a glass door or window to reduce reflection and interference.
- Avoid facing towards constantly moving objects.

9. Battery Replacement, Firmware Update and Factory Reset

Battery Replacement

Remove the Battery Case. Follow the "+" and "-" marks, replace the old batteries with new ones. Put the Battery Case back.

Firmware Update

Please make sure you have the up to date firmware by upgrading in time.

Factory Reset

Long press the Reset Button for 15 seconds or until the LED Indicator Light is on.

Note: After the device is reset, all settings will be set to the default values and the activity logs will be erased.

10. Q&A

Q: Is there any difference in using Contact Sensor on a door or window?

A: When installed to a window, the motion sensing feature will be automatically disabled because the cool air or hot air may interfere with the built-in motion sensor beneath the Reset Button which may trigger false alarms.

Q: How to enable Cloud Service?

A: You need to purchase a SwitchBot Hub Mini (sold separately) and set it up under your account. Then navigate to the app Home page.

If you see a cloud icon showing up on the Contact Sensor device card, this means it is being scanned by Hub Mini. Navigate to the Settings page of Contact Sensor to enable Cloud Service from there.

Scan the QR code below to view more solutions.

<https://support.switch-bot.com>



11. Specification

Model Number: W1201500

Size: 70.5mm x 25.5mm x 23mm (Contact Sensor);
35mm x 12mm x 12.5mm (Magnet)

Weight: 43g (Contact Sensor with batteries);
13g (Magnet)

Battery Life: 2 x AAA batteries roughly 3 years
(triggered 80 times door open & door close
respectively, button press and light sensing 40 times
and 20 times by local scenes under 77°F (25°C) by
daily use)

Working Condition: 14°F~140°F (-10°C~60°C),
20~85% RH

Maximum Detection Distance: 5m, results obtained
from lab experiments under 77°F (25°C)

Maximum Detection Range: 90° horizontally and
55° vertically, results obtained from lab experiments
under 77°F (25°C)

12. Return and Refund Policy

This product has one-year warranty (start from the purchasing day).

The situations below do not fit the Return and Refund Policy.

- Intended damage or abuse.
- Inappropriate storage (drop down or soaking in water).
- Modify or repair of product.
- Natural wearing of product.
- Natural disasters.

The batteries are not in the warranty.

13. Contact and Support

Setup and Troubleshooting:

support.switch-bot.com

Support Email:

support@wondertechlabs.com

Feedback: If you have any concern or problem when using our products, please kindly send feedback from the Profile > Feedback page in the SwitchBot app.

CE Warning

Manufacturer's Name: Woan Technology (Shenzhen) Co., Ltd.

This product is a fixed location. To comply with RF exposure requirements, a minimum separation distance of 20cm must be maintained between the user's body and the device, including the antenna. Use only the supplied or an approved antenna.

This device in compliance with the essential requirements and other relevant provisions of Directive 2014/53/EU. All essential radio test suites have been carried out.

1.CAUTION : RISK OF EXPLOSION IF BATTERY IS REPLACED BY AN INCORRECT TYPE. DIS- POSE OF USED BATTERIES ACCORDING TO THE INSTRUCTIONS

2.The device complies with RF specifications when the device used at 20cm from your body

FCC Warning

This device complies with part 15 of the FCC Rules. Operation is subject to the following two conditions:

(1) This device may not cause harmful interference, and (2) this device must accept any interference received, including interference that may cause undesired operation. Any Changes or modifications not expressly approved by the party responsible for compliance could void the user's authority to operate the equipment.

This equipment has been tested and found to comply with the limits for a Class B digital device, pursuant to part 15 of the FCC Rules. These limits are designed to provide reasonable protection against harmful interference in a residential installation.

This equipment generates uses and can radiate radio frequency energy and, if not installed and used in accordance with the instructions, may cause harmful

interference to radio communications. However, there is no guarantee that interference will not occur in a particular installation.

If this equipment does cause harmful interference to radio or television reception, which can be determined by turning the equipment off and on, the user is encouraged to try to correct the interference by one or more of the following measures:

- Reorient or relocate the receiving antenna.
- Increase the separation between the equipment and receiver.
- Connect the equipment into an outlet on a circuit different from that to which the receiver is connected.
- Consult the dealer or an experienced radio/TV technician for help. The device has been evaluated to

meet general RF exposure requirement. The device can be used in portable exposure condition without restriction.

FCC RF exposure statement:

The equipment complies with FCC Radiation exposure limit set forth for uncontrolled environment. This equipment should be installed and operated with minimum distance 20cm between the radiator and your body.

KCC 경고

인증받은자의 상호: Woan Technology (Shenzhen) Co., Ltd.
제품명/모델명: SwitchBot Contact Sensor/W1201500
특정소출력 무선기기(무선데이터통신시스템용 무선기기) /
W1201500
제조자 및 제조국가: Woan Technology (Shenzhen) Co., Ltd.
/China
제조년월: 2021.04
인증번호: R-R-Woa-W1201500
이 장치는 보안성이 없으므로 통신보안에 위배되는 사항의 통신을
금지하며 운용 중

UKCA DOC

Hereby, Woan Technology (Shenzhen) Co., Ltd.
declares that the radio equipment type W1201500 is
in compliance with UK Radio Equipment Regulations
(SI 2017/1206).

The full text of the UK declaration of conformity is
available at the following internet address:

www.switch-bot.com

NCC 警語：

取得審驗證明之低功率射頻器材，非經核准，公司、商號或使用者均不得擅自變更頻率、加大功率或變更原設計之特性及功能。

低功率射頻器材之使用不得影響飛航安全及干擾合法通信；經發現有干擾現象時，應立即停用，並改善至無干擾時方得繼續使用。

前述合法通信，指依電信管理法規定作業之無線電通信。

低功率射頻器材須忍受合法通信或工業、科學及醫療用電波輻射性電機設備之干擾。