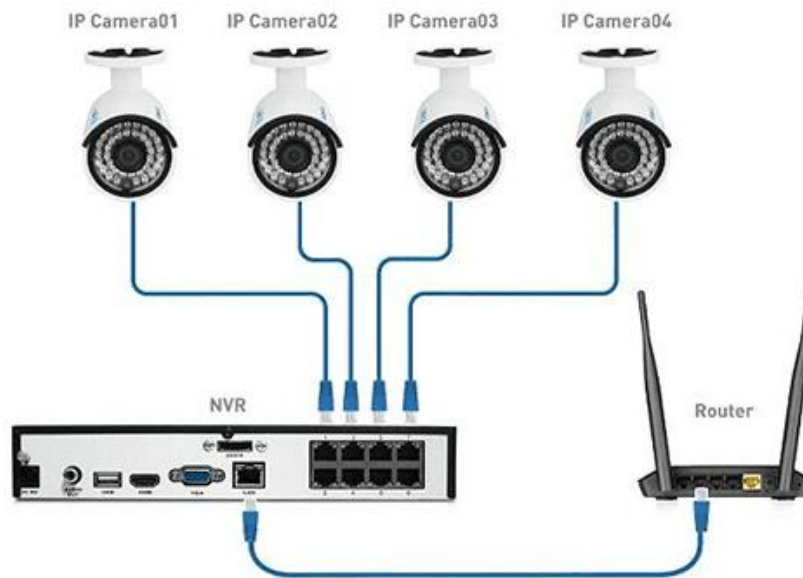
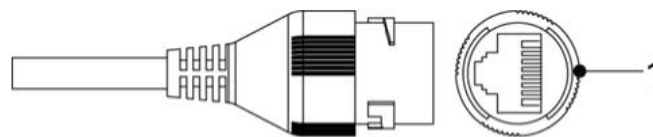


Please contact us at Amazon for a detailed manual if necessary. Thank you.
Connect Way:



Step 1.

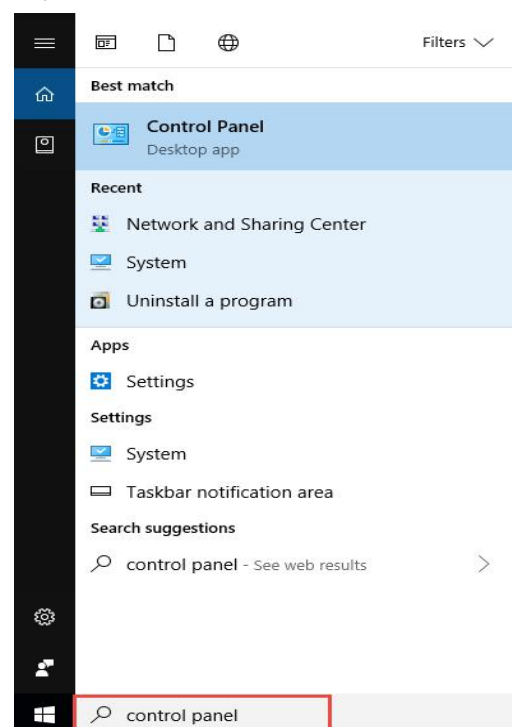
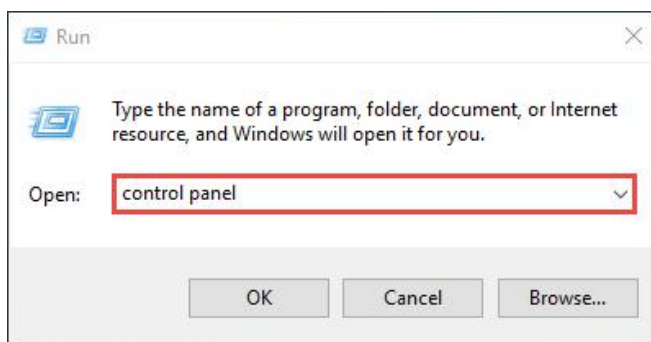
Connect Camera with RJ45 to POE Switch or POE Injector via network cable (Cat5 or Cat6 cables)

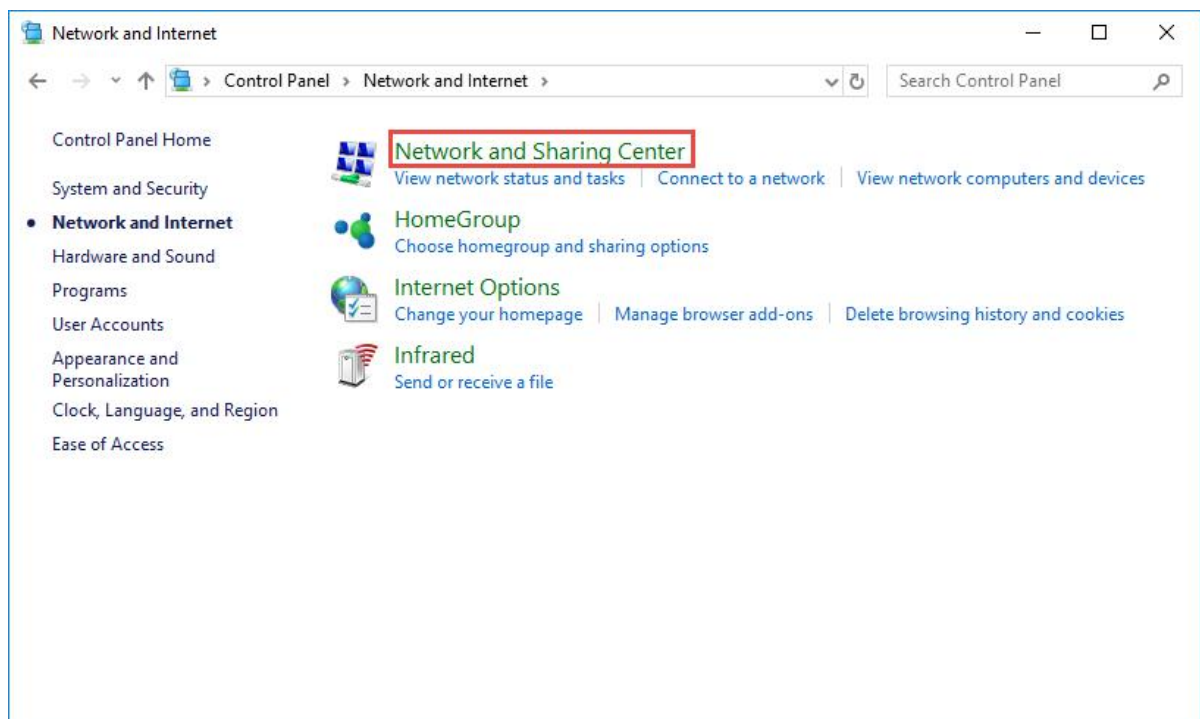
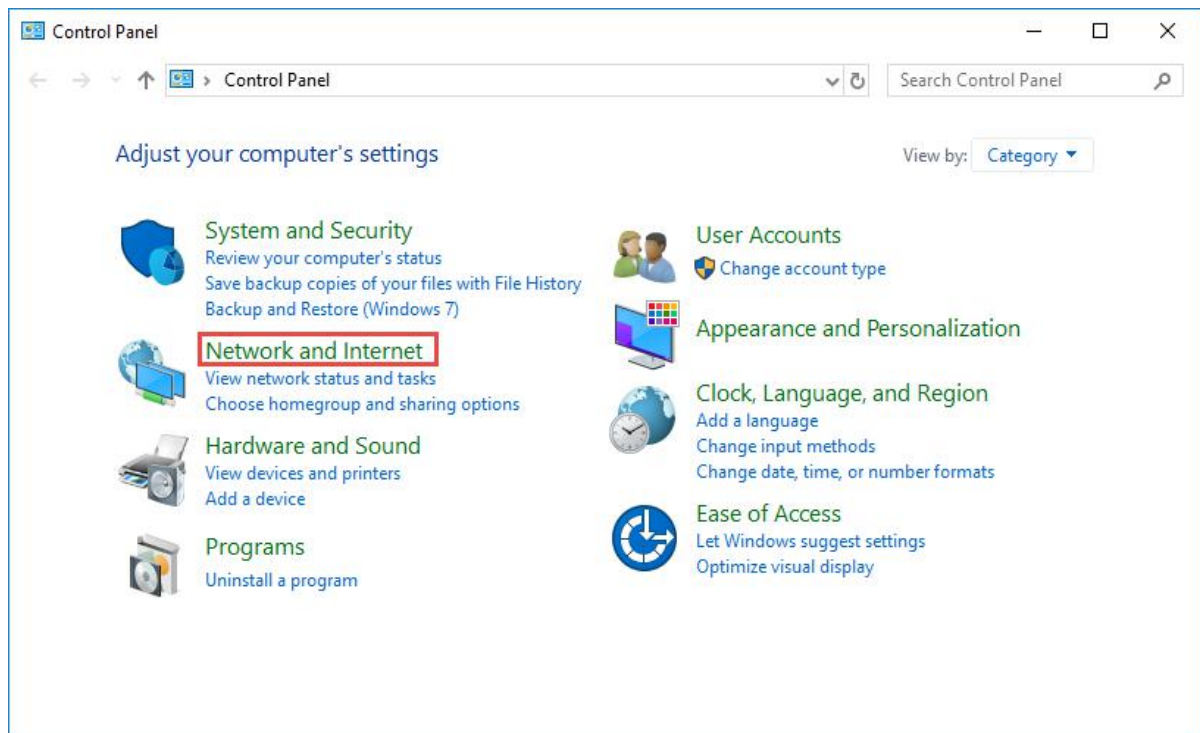


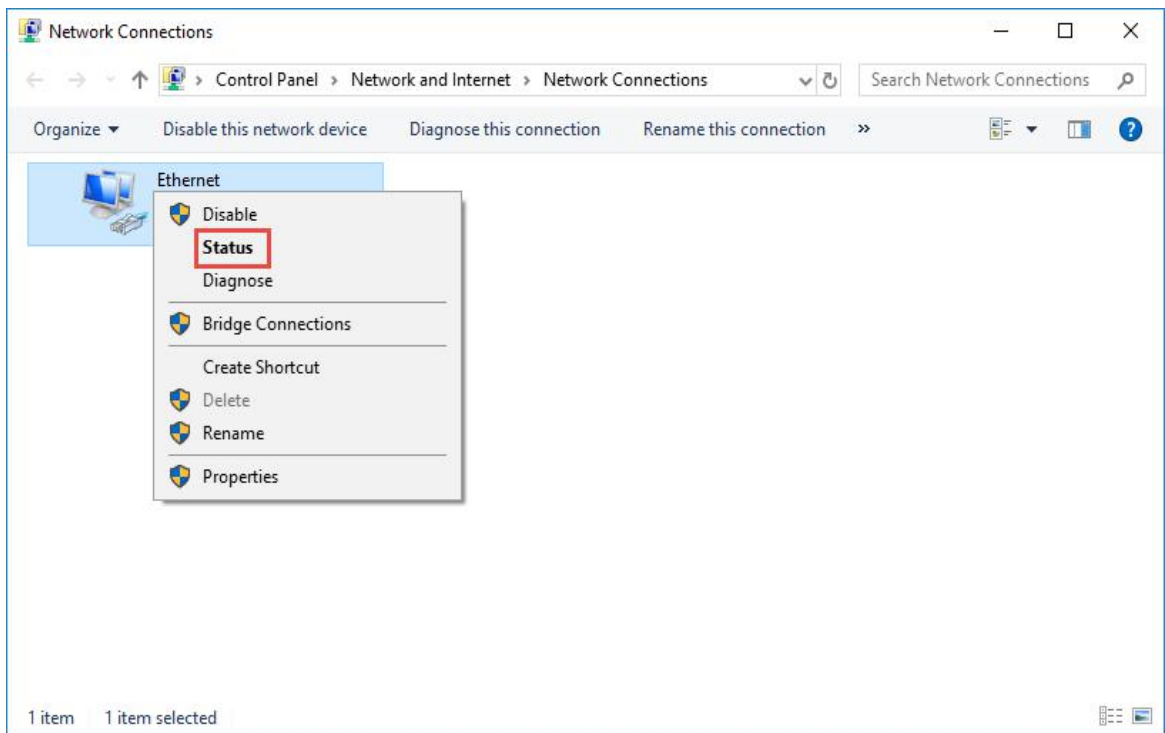
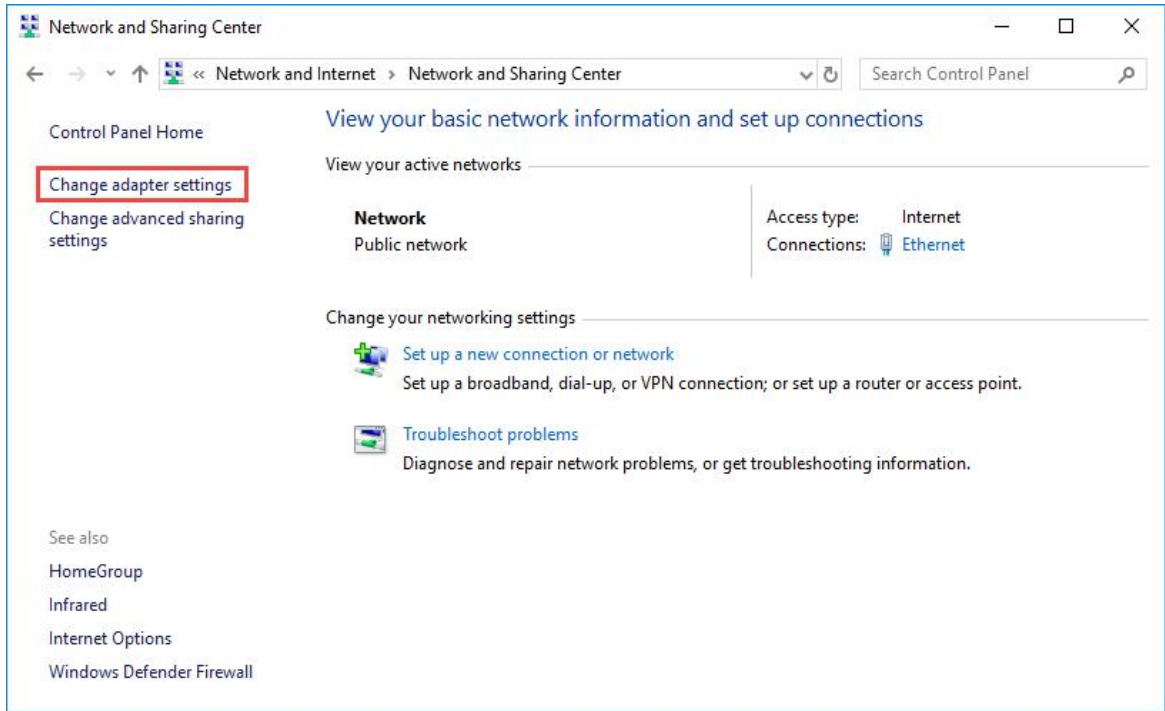
Step2.

Modify the PC's local connection IP Address, Make the IP address of the PC and the camera(192.168.1.108 is the default IP address) be in the same segment

How to find your computer's IP Address? WIN+R, Enter control panel,







Ethernet Status

General

Connection

IPv4 Connectivity: Internet
IPv6 Connectivity: No network access
Media State: Enabled
Duration: 00:00:49
Speed: 1.0 Gbps

Details...

Activity

Sent — Received

Bytes: 79,056 | 566,248

Properties Disable Diagnose

Close

Network Connection Details

Network Connection Details:

Property	Value
Connection-specific DN...	
Description	Qualcomm Atheros AR8151 PCI-E Gigabit Ethernet Controller #1
Physical Address	50-E5-49-1D-5D-9C
DHCP Enabled	Yes
IPv4 Address	10.0.3.110
IPv4 Subnet Mask	255.255.252.0
Lease Obtained	Sunday, January 27, 2019 10:23:49 PM
Lease Expires	Monday, January 28, 2019 12:23:48 AM
IPv4 Default Gateway	10.0.0.1
IPv4 DHCP Server	10.0.0.1
IPv4 DNS Server	10.0.0.1
IPv4 WINS Server	
NetBIOS over Tcpip En...	Yes
Link-local IPv6 Address	fe80::dce8:34c:cf5c:e0c%10
IPv6 Default Gateway	
IPv6 DNS Server	

Close

Network Connections

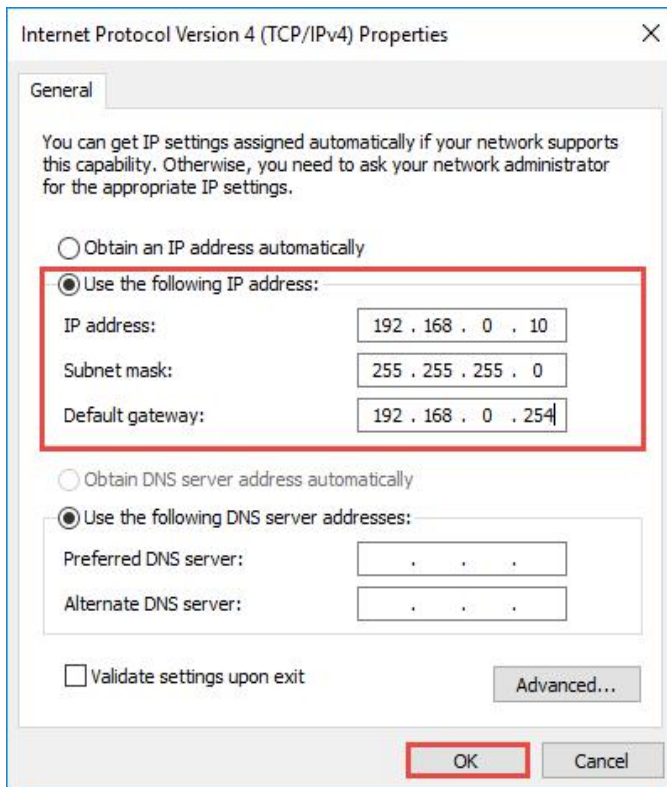
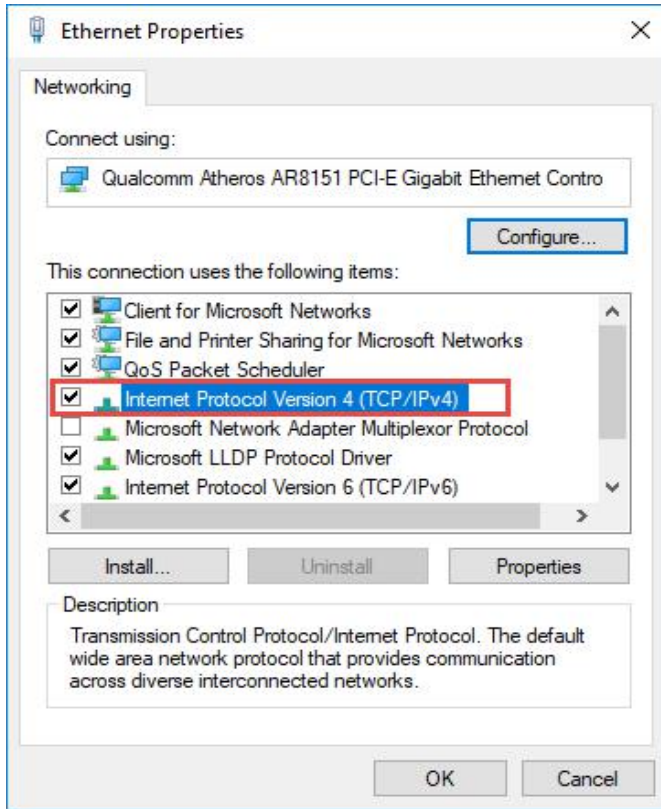
Control Panel > Network and Internet > Network Connections

Organize Disable this network device Diagnose this connection Rename this connection

Ethernet

- Disable
- Status**
- Diagnose
- Bridge Connections
- Create Shortcut
- Delete
- Rename
- Properties**

1 item 1 item selected



Step 3.

Install toolbox and configtool, Get IP address by searching on ConfigTool

The screenshot shows the ConfigTool interface with a sidebar on the left containing menu items: Modify IP, Device Upgrade, Device Config, System Settings, Password Reset, Building Config, and CGI Protocol. The main area displays a table with 1 device found. The table has columns: NO., Status, Type, Model, IP, MAC, Version, and Operate. The first row shows a device with NO. 1, Status Uninitialized, Type IPC, Model IPC-HDW3849H-A..., IP 192.168.1.108, MAC 6c:1c:71:d8:02:5c, and Version V2.820.000... The Operate column contains Edit, Details, and Web links. Above the table are buttons for Initialize, Batch Modify IP, Import, Export, Manual Add, and Delete. A search bar is also present. At the bottom, there are checkboxes for Uninitialized and Initialized, and buttons for IPV4 and IPV6.

NO.	Status	Type	Model	IP	MAC	Version	Operate
1	Uninitialized	IPC	IPC-HDW3849H-A...	192.168.1.108	6c:1c:71:d8:02:5c	V2.820.000...	Edit Details Web

This screenshot shows the same ConfigTool interface as above, but with the 'Initialize' button highlighted in a red box. A dialog box titled 'Device initialization' is open, displaying a table with 1 device that has not been initialized. The dialog box has a close button (X) in the top right corner. The table has columns: NO., Type, Model, IP, MAC, and Version. The first row shows a device with NO. 1, Type IPC, Model IPC-HDW3849H-A..., IP 192.168.1.108, MAC 6c:1c:71:d8:02:5c, and Version V2.820.00000000.... Below the table, there is a note: '*The list only shows connected LAN device(s), you cannot initialize crossing LAN.' and an 'Initialize' button highlighted in a red box.

NO.	Type	Model	IP	MAC	Version
1	IPC	IPC-HDW3849H-A...	192.168.1.108	6c:1c:71:d8:02:5c	V2.820.00000000....

Device initialization

1 device(s) have not been initialized

Username:

New Password:

Weak **Medium** Strong

Confirm Password:

Use a password that has 8 to 32 characters, it can be a combination of letter(s), number(s) and symbol(s) with at least two kinds of them. (excluding single quote('), double quote("), colon(:), semicolon(;), connection symbol(&))

Email Address (for password reset)

Select P/N:

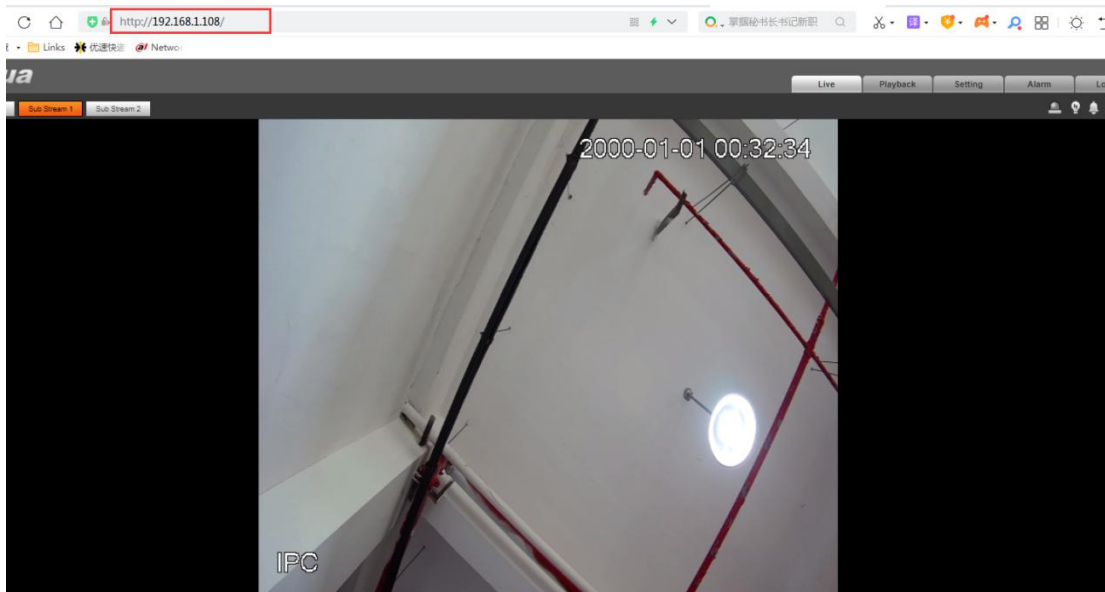
*After you have set new password, please set password again in "Search Setting".

Next

Initialize Batch Modify IP Import Export Manual Add Delete Search

NO.	Status	Type	Model	IP	MAC	Version	Operate
1	Initialized	IPC	IPC-HDW3849H-A...	192.168.1.108	6c:1c:71:d8:02:5c	V2.820.000...	Edit Details Web

Enter IP address in WEB



Select Event-> Smart Plan, Click IVS and Save

