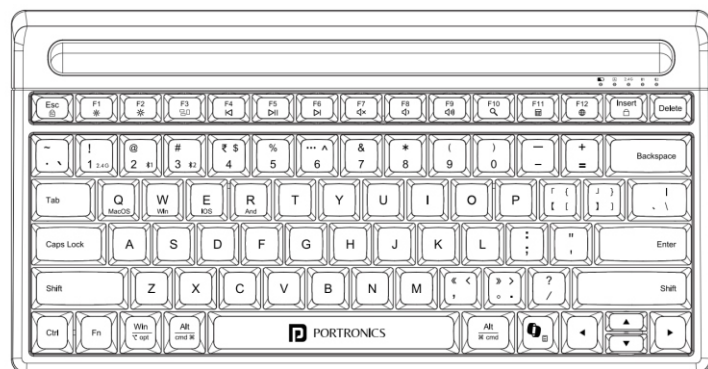




BUBBLE DOCK 2.0

Rechargeable Wireless Keyboard With Built-in Tablet & Mobile Holder



User Manual

1. PRODUCT OVERVIEW

This is a multi-device wireless keyboard designed for portability and productivity. It supports both 2.4G wireless (USB receiver) and Bluetooth connections, making it compatible with a wide range of devices. The keyboard allows you to pair two devices simultaneously and switch between them easily.

2. COMPATIBILITY

The keyboard works with:

- Mac OS: X 10.2.8 or above (Some exceptions may apply, e.g. Mac Mini)
- iOS: All versions (iPhone / iPad)
- Android: Version 3.0 and above with Bluetooth HID profile
- Bluetooth-enabled PCs, Laptops, iMacs, and MacBooks

3. SPECIFICATIONS

- Type: 2.4G + Bluetooth Wireless Keyboard
- Design: Suitable for both left & right hand use
- Keys: 78 keys
- Working Distance: 8-10 m
- Power Supply: 2 x AAA batteries (1.5V each, total 3.0V)
- Key Life: 10 million presses

- Receiver: Nano USB receiver (2.4G)
- Product Size: 302 x 157 x 27 mm
- Box Size: 320 x 160 x 30 mm
- Net Weight: 463 ± 5 g
- Operating Temperature: 0°C - 40°C
- Storage Temperature: -20°C - 40°C

4. GETTING STARTED

Step 1: Insert Batteries

1. Open the battery compartment.
2. Insert 2 x AAA batteries (make sure to match the +/- polarity).
3. The red light will flash for 2 seconds and then turn off - the keyboard is still ON.

Step 2: Connecting Devices

Option A: Bluetooth Connection

1. Press Fn + BT1 (for Device 1, e.g. Laptop) or Fn + BT2 (for Device 2, e.g. Tablet).
2. The Bluetooth indicator light (blue/green) will start blinking.
3. On your device, enable Bluetooth and search for available devices.
4. Select the keyboard from the device list to pair.
5. Once paired, the indicator light will turn off.

6. The keyboard remembers paired devices - it will reconnect automatically next time.

Note: If pairing fails, delete the device from your Bluetooth list and repeat the steps.

Option B: 2.4G Wireless Connection (USB Receiver)

1. Insert batteries into the keyboard.
2. Remove the nano USB receiver from the keyboard.
3. Plug the receiver into the USB port of your PC/Laptop.
4. Press Fn + 2.4G to activate.
5. You are now connected!

Switching Between Devices

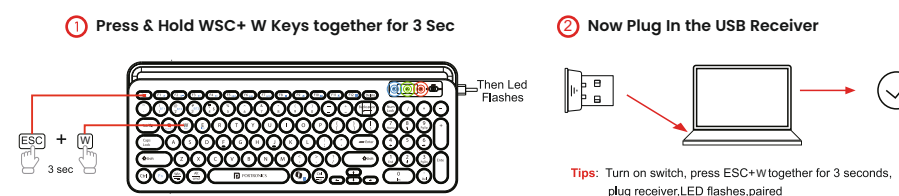
- Press Fn + Bt1 → Switch to Device 1
- Press Fn + Bt2 → Switch to Device 2
- Press Fn + 2.4G → Switch to USB receiver mode

⚡ Only one connection is active at a time.

PAIRING PROCESS

To pair the wireless keyboard, press and hold the ESC + W keys together for 3 seconds.

RESET METHOD



MULTIMEDIA & FUNCTION KEYS

Key Combination	Function
ESC	→ Return
Fn + ESC	→ Lock Fn
Fn + F1	→ Decrease screen brightness
Fn + F2	→ Increase screen brightness
Fn + F3	→ Show Mission Control
Fn + F4	→ Previous Track
Fn + F5	→ Next Track
Fn + F6	→ Play / Pause
Fn + F7	→ Mute
Fn + F8	→ Decrease Volume
Fn + F9	→ Increase Volume
Fn + F10	→ Home Page
Fn + F11	→ Calculator
Fn + F12	→ Switch Languages

TIPS & NOTES

- Always use fresh AAA batteries for best performance.
- If the keyboard stops responding, replace the batteries.
- Keep the keyboard within 8-10 m range of the connected device.
- For Bluetooth mode, make sure the device supports the Bluetooth HID profile.

SAFETY & STORAGE

- Do not expose the keyboard to extreme temperatures or humidity.
- Do not attempt to disassemble the product.
- Remove batteries if the keyboard will not be used for a long period.



E-Waste Management
E: info@3rrecycler.com
For E-Waste & ROHS compliance
refer to www.portronics.com ewaste

www.portronics.com

For Support

Visit : www.portronics.com

E-mail : help@portronics.com

Contact No.: +91 9555245245

(Working Hours: Monday - Saturday, 10:00am - 6:00pm)