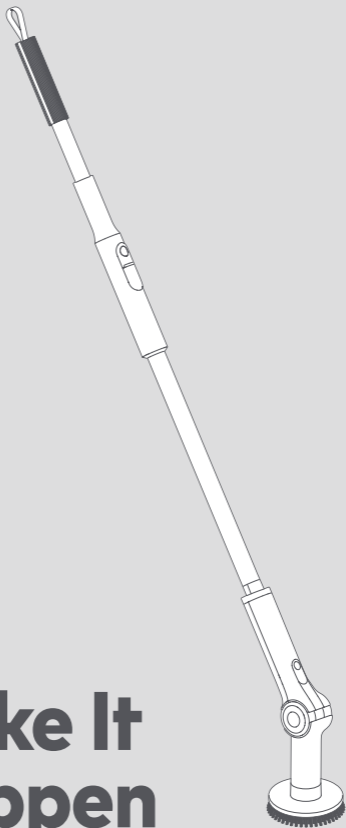


HOTO Flexi™ Cordless Spin Scrubber



**Make It
Happen**



Scan the QR code to access additional usage guidelines.

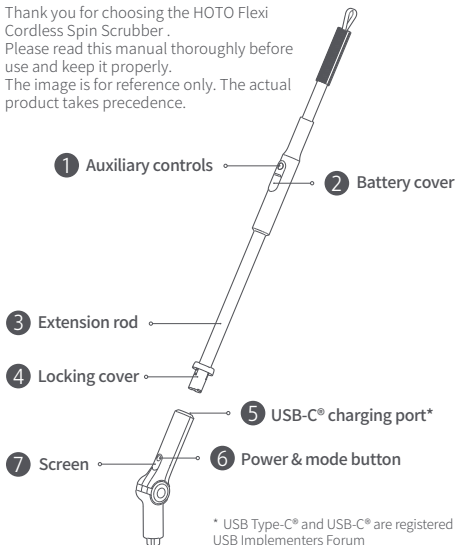


Visit our website for more Cool Tools (www.hototools.com)

01 Product Introduction

Important, retain for future reference: read carefully.

Thank you for choosing the HOTO Flexi Cordless Spin Scrubber .
Please read this manual thoroughly before use and keep it properly.
The image is for reference only. The actual product takes precedence.



- * The unassembled rod retains the auxiliary controls. Store it properly to prevent accidental startup.
- * Due to energy-saving design, power-on via the auxiliary controls incurs a random 1–3 s delay (long press required).



8 Large Flat brush

Suitable for large surfaces, from tile walls to floors, indoors and outdoors.



9 Ball brush

Suitable for brushing curved surfaces such as bathtubs, wash basins, sinks.



10 Pointed brush

Suitable for cleaning dirt in the corners, gaps and grooves of sinks and faucets.



11 Scour pad

Ideal for removing stubborn stains from cookware, stovetops and other kitchen surfaces.*



12 Sponge pad

Suitable for cleaning glass, mirrors, and leather surfaces.



13 Cloth pad

Suitable for delicate surfaces like tabletops and floors, clean more stains in one swipe.



14 Synthetic fiber pad

Suitable for leather surfaces such as sofas.



15 Velcro adapter for pads

For replacing fabric cleaning pads.

* This product has strong scrubbing power. Avoid using it on easily scratched surfaces such as polished metal or non-stick coatings.

Notes:

- Brush heads and fabric attachments are consumables. Purchase replacements via official website/online platforms.
- To avoid scratching or damaging the object being cleaned, please choose a suitable brush head. Before use, be sure to conduct a spot test to ensure safety.
- Attach the scour pad, sponge pad, cloth pad and synthetic fiber pad to the Velcro adapter.
- For optimal performance, use scour pad, sponge pad, cloth pad and synthetic fiber pad when damp. Prolonged dry use may cause irreversible damage to the product.

02 Use of Product

Charging

Fully charge this product before first use. Charge the product with a USB-C charging cable and a compatible power adapter.

The product is provided with a USB-A to USB-C charging cable.

* Do not use the product while it is charging.

Power on/off

Long-press the power button to turn on/off.

* Ensure the USB-C rubber seal is properly inserted before use.

Gear adjustment

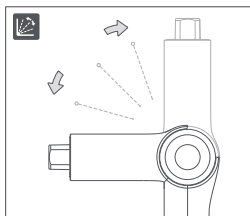
Short-press the power button during operation to switch modes.

High-speed gear: the screen displays **MAX**

Low-speed gear: the screen displays **ECO**

Angle adjustment

Press the button on the side of the brush head. The device offers 5 adjustable angles—adjust to a suitable angle for use.



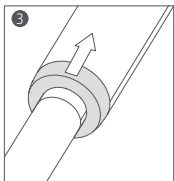
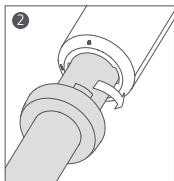
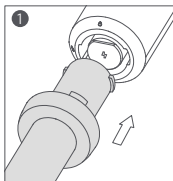
Installation of scrubber heads

Gently place the brush head onto the main unit's interface, it will automatically attract via magnetic connection.

Installation of the Extension Rod

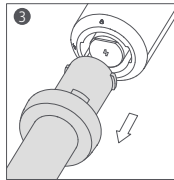
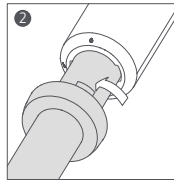
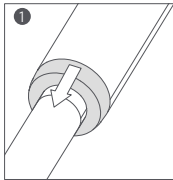
Installation and removal

Installation: Insert the extension rod into the main unit and rotate clockwise until fully locked. Then, push the locking cover toward the main unit until it clicks into place.



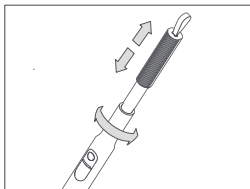
Correct installation: The sides of the extension rod and main unit must face the same direction.

Removal: Please pull out the locking cover first. And hold the extension rod and rotate it counterclockwise until fully unlocked.



Extension rod length adjustment

Hold the assist control switch on the extension rod and rotate the handle to unlock for length adjustment:
Rotate counterclockwise to loosen and extend the rod.
Rotate clockwise to tighten and lock the length.



Auxiliary control introduction

Power on/off and gear adjustment

Long press the auxiliary control to turn on/off; short press to switch gears.

Auxiliary control pairing

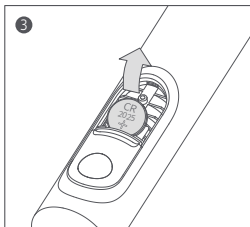
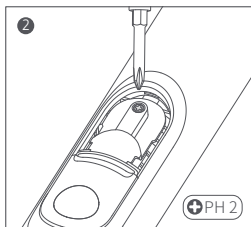
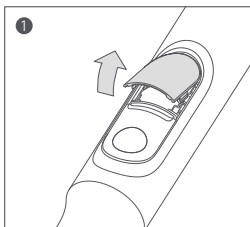
Pairing: While the device is charging, press and hold the unit button for three seconds. The screen will display “- -” to indicate pairing mode. Then press and hold the remote control button for approximately four seconds to complete pairing. Once the pairing is successful, the screen will return to the battery level display.

Unpairing: While the device is charging, press and hold the unit button for three seconds. The screen will display “- -” to indicate pairing mode. If no further action is taken, the screen will return to the battery level display after 30 seconds, indicating that the remote control has been successfully unpaired.

Battery replacement

Open the battery cover and use a  PH 2 screwdriver to loosen the screw for battery replacement.

* This product uses CR2025 coin button / cell battery. For optimal performance, please use branded batteries



03 Warnings

- Do not disassemble, open or chop tools.
- Do not expose products to heat sources or flames. Do not store in direct sunlight.
- It is forbidden to make products undergo mechanical shock.
- If the battery leaks, avoid making the leaked liquid come into contact with your skin or eyes. In case of contact, rinse the affected area with a large amount of water and seek medical help promptly.
- The battery has the best performance using at normal temperature ($25^{\circ}\text{C} \pm 5^{\circ}\text{C}$).
- Save the original instructions for future reference.
- Dispose of the battery properly. Before disposing of the product, the battery must be removed from the product by a professional and disposed of safely.
- This product is not a toy. Children are prohibited from using it. The minimum recommended age for use is 16 years.
- Dispose of the battery pack properly and in an environmentally friendly way. Ensure the device is powered off before removing the battery pack.

- The main unit is rated IPX7. The extension rod is rated IPX4, which protects it against water splashes and direct sprays. The brush head is submersible. For long-term performance, store the product in a dry environment.
- When cleaning the plastic parts of the brush body, avoid friction with surfaces to prevent scratch marks.
- Different brush heads are designed for different surfaces. Please refer to the manual to avoid incorrect use.
- Keep loose hair away from the rotating brush head during use to prevent tangling.
- Avoid using strong acidic or alkaline detergents during use, as they may cause the product to crack or become damaged.

Button Cell / Coin Battery Warnings

1. Remove and immediately recycle or dispose of used batteries according to local regulations and keep away from children. Do NOT dispose of batteries in household trash or incinerate.
2. Even used batteries may cause severe injury or death.
3. Call a local poison control center for treatment information.
4. Battery type: CR2025, Nominal battery voltage: 3V.
5. Non-rechargeable batteries are not to be recharged.
6. Do not force discharge, recharge, disassemble, heat or incinerate, Doing so may result in injury due to venting, leakage or explosion resulting in chemical burns.
7. Ensure the batteries are installed correctly according to their polarity (+ and -).
8. Remove and immediately recycle or dispose of batteries from equipment not used for an extended period of time according to local regulations.
9. Always completely secure the battery compartment. If the battery compartment does not close securely, stop using the product, remove the batteries, and Keep them away from children.
10. Do not mix old and new batteries, different brands or types of batteries. such as alkaline, carbon-zinc, or rechargeable batteries.
11. This product contains a button battery. If swallowed, it could cause severe injury or death in just 2 hours. Seek medical attention immediately.

Faults and troubleshoot

Fault	Cause	Troubleshooting
Device not working/ suddenly stops working while in use	1.The lithium battery runs low 2.Current device temperature is too high	1.Please charge the device in time 2.Use after the device cools down
Unable to charge	1.The USB cable is not plugged in properly, or the charging cable is not the designated one 2.The device temperature is too high	1.Please replace adapter and charging cable to charge 2.Allow the device to cool for 30 minutes before recharging
Auxiliary controls not responding	1.Auxiliary controls battery is dead or auxiliary controls is not paired properly 2.Reverse polarity detected	1.Replace the battery or re-pair the auxiliary controls 2.Please insert the battery with the positive terminal facing up
Machine reports fault E1	NTC device failure	After-sales service during warranty period
Machine reports fault E2	Motor or MOSFET failure	After-sales service during warranty period

04 Basic Parameters

Product name: HOTO Flexi Cordless Spin Scrubber

Product model: QWQJA08

Product dimension: Approx. 1368.4×64.2×60mm (Main Unit+Extension Rod)
(Approx. 53.87 × 2.53 × 2.36in)

Net weight: Approx. 1000g (Main Unit+Extension Rod) (Approx. 2.20lb)

Product color: Grey black

Typical Low gear no-load speed: 170 ±10% r/min

Typical High gear no-load speed: 245 ±10% r/min

Main Unit Waterproof: IPX7

Charging time: Approx. 170 minutes

Battery type: Lithium-ion battery

Battery capacity: 4000mAh 14.4Wh

Rated input: 5V---2A

Nominal voltage: 3.6V---

Storage temperature: -10°C-45°C

Operating temperature: -10°C-45°C

Charging temperature: 5°C-40°C

Product accessories:

Large flat brush: Approx. ϕ 130×56.7mm (ϕ 5.12 × 2.23 in)

Ball brush: Approx. 120×68.3mm (ϕ 4.72 × 2.69in)

Pointed brush: Approx. ϕ 58.5×91.6mm (ϕ 2.3×3.61in)

Sponge pad×2: Approx. ϕ 150×15mm (ϕ 5.91×0.59 in)

Scour pad: Approx. ϕ 150×10mm (ϕ 5.91×0.39 in)

Cloth pad: Approx. ϕ 150×15mm (ϕ 5.91×0.59in)

Synthetic fiber pad: Approx. ϕ 150×8mm (ϕ 5.91×0.31 in)

Velcro adapter for pads: Approx. ϕ 130×27.6mm (ϕ 5.12×1.09 in)

Brush head storage bag: Approx. 260×310mm (10.34×12.20 in)

Charging cable: USB-A to USB-C/300mm (11.81in)/black

**The wireless operation frequency: 433.92MHz,
Max output power ≤14dBm(E.R.P)**

Notes for packaging



The packaging materials are recyclable. Please dispose of packaging in an environmentally friendly manner.

Disposal and recycling information



All products bearing this symbol are waste electrical and electronic equipment (WEEE as in directive 2012/19/EU) which should not be mixed with unsorted household waste. Instead, you should protect human health and the environment by handing over your waste equipment to a designated collection point for the recycling of waste electrical and electronic equipment, appointed by the government or local authorities. Correct disposal and recycling will help prevent potential negative consequences to the environment and human health. Please contact the installer or local authorities for more information about the location as well as terms and conditions of such collection points.

05 Regulatory Compliance Information

Federal Communications Commission Supplier's Declaration of Conformity

This supplier's declaration of conformity is hereby for

Product: HOTO Flexi Cordless Spin Scrubber

Model Number(s): QWQJA08

Brand/Trade: HOTO

We declare that the above mentioned device has been tested and found in compliance with CFR 47 Part 15 Regulation.

This device complies with part 15 of the FCC Rules. Operation is subject to the following two conditions: (1) This device may not cause harmful interference, and (2) this device must accept any interference received, including interference that may cause undesired operation.

Note: This equipment has been tested and found to comply with the limits for a Class B digital device, pursuant to part 15 of the FCC Rules. These limits are designed to provide reasonable protection against harmful interference in a residential installation. This equipment generates, uses and can radiate radio frequency energy and, if not installed and used in accordance with the instructions, may cause harmful interference to radio communications. However, there is no guarantee that interference will not occur in a particular installation. If this equipment does cause harmful interference to radio or television reception, which can be determined by turning the equipment off and on, the user is encouraged to try to correct the interference by one or more of the following measures:

- Reorient or relocate the receiving antenna.
- Increase the separation between the equipment and receiver.
- Connect the equipment into an outlet on a circuit different from the receiver is connected.
- Consult the dealer or an experienced radio/TV technician for help.

Representative of Responsible Party for SDoC

Company: HOTO (US) TECHNOLOGY CO LTD

Address: 919 North Market Street, Suite 950, Wilmington DE 19801

Country: U.S.A.

Customer Service(US): +1 855-577-2659 service@hototools.com

Mon-Fri 9: 00am-5: 00pm(CST)

Language spoken: English

FCC Warning:

Any changes or modifications not expressly approved by the party responsible for compliance could void the user's authority to operate the equipment. This equipment complies with RF radiation exposure limits set forth for an uncontrolled environment.

The device has been evaluated to meet general RF exposure requirement. The device can be used in portable exposure condition without restriction.

Europe – EU declaration of conformity



We, Shanghai HOTO Technology Co., Ltd., hereby, declare that this equipment is in compliance with the applicable Directives and European Norms, and amendments.

DECLARATION OF CONFORMITY



EU Declaration of Conformity

We

Shanghai HOTO Technology Co., Ltd.

Declare that the product:

HOTO Flexi Cordless Spin Scrubber / QWQJA08

Complies with the essential health and safety requirements of the following directives:

2014/30/EU Electromagnetic Compatibility directive References to the following harmonized standard were made:

EN55014-1: 2021

EN55014-2: 2021

EN IEC 61000-3-2:2019+A1:2021

EN 61000-3-3:2013+A2:2021

2011/65/EU+ (EU) 2015/863 Restrictions of the Use of Certain Hazardous Substances in Electrical and Electronic Equipment
Authorised signatory and technical file holder:

Shanghai HOTO Technology Co., Ltd.

Building 45, No.50 Moganshan Road, Shanghai, China.

⚠️ WARNING

- **INGESTION HAZARD:** This product contains a button cell or coin battery.
- **DEATH** or serious injury can occur if ingested.
- A swallowed button cell or coin battery can cause **Internal Chemical Burns** in as little as **2 hours**.
- **KEEP** new and used batteries **OUT OF REACH of CHILDREN**
- **Seek immediate medical attention** if a battery is suspected to be swallowed or inserted inside any part of the body.



Designed by **HOTO**