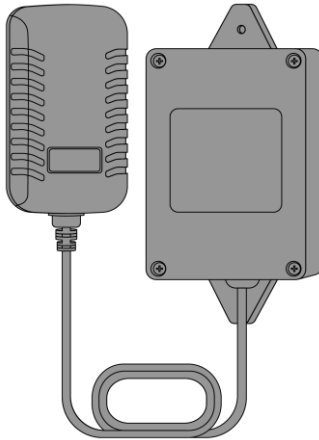




TOPENS[®]

TC196

Tuya WiFi Remote Control User Manual



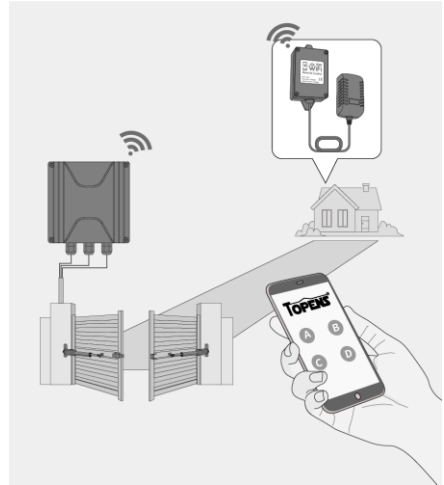
Operate with Ease - All from Your Phone !



Product Description

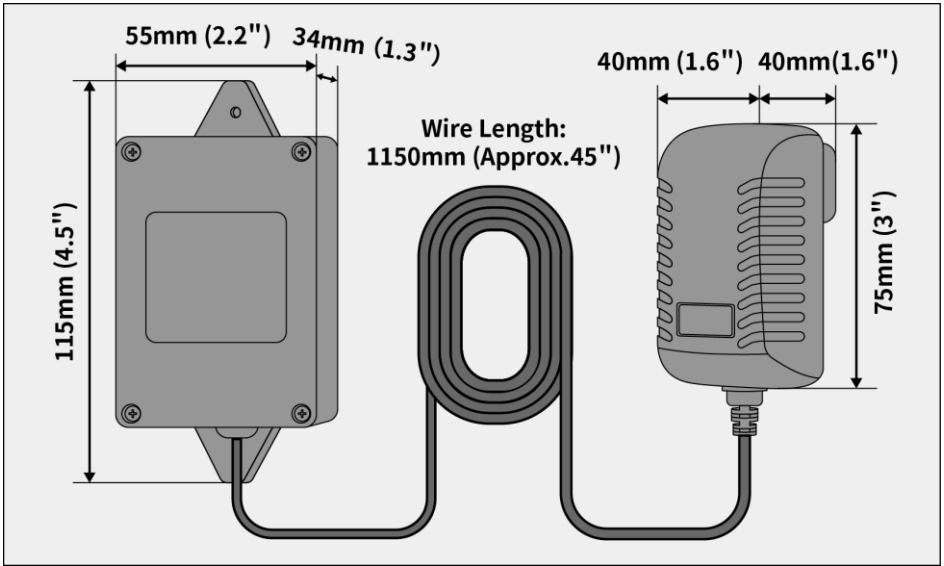
The Tuya WiFi remote control is a smart access control device designed to operate automatic gate openers via smartphone. Once connected to a stable Wi-Fi network, it enables remote gate control anytime, from anywhere.

The device comes with a power adapter for direct plug-in but can also be powered by an AC-DC power supply, battery, or transformer.



1 SPECIFICATIONS AND DIMENSIONS

Network Connection for the WiFi Remote Control	2.4GHz WiFi
Network Connection for the Smartphone	3G/4G/5G/WiFi
Power Input of the WiFi Remote Control	9-24VAC/DC
Power Input of the Power Adapter	100-240VAC
Power Output of the Power Adapter	12VDC
Working Temperature	-20°C ~ +50°C (0°F to 120°F)
Protection Class of the WiFi Remote Control	IP55
Protection Class of the Power Adapter	Not Waterproof



2 ADDING THE WIFI REMOTE CONTROL

STEP 1 Download the App

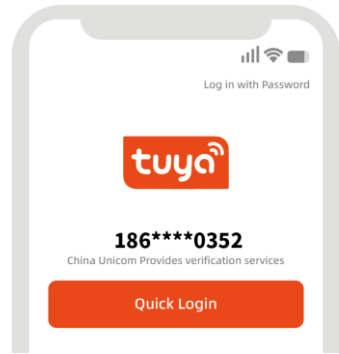
Search and download “Tuya Smart” via App Store or Google Play.



STEP 2 Register a User Account

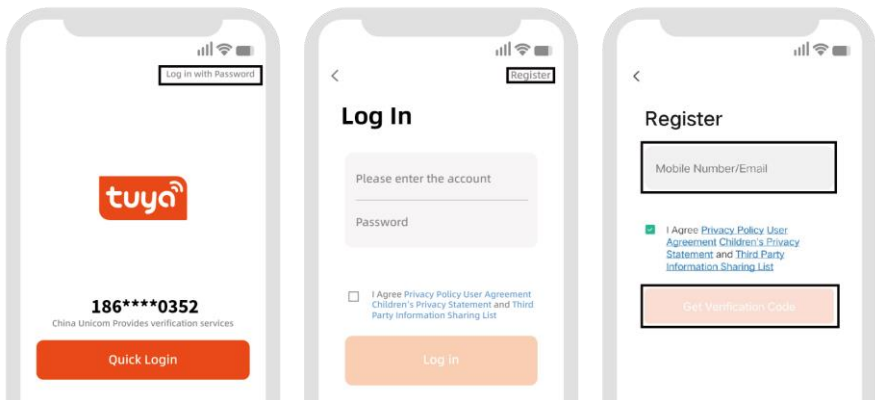
Method 1: Quick Login

- ◆ Open the app, and it will automatically detect your phone number. Click “Quick Login” and follow the on-screen instructions to complete the login process.

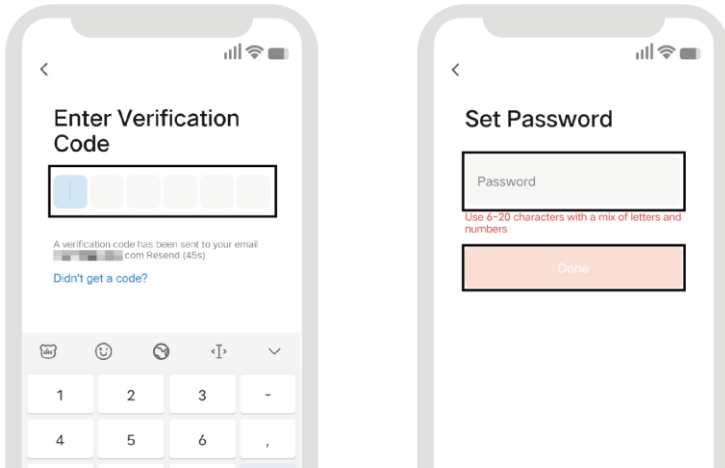


Method 2: Register with a Password

- ◆ Open the app and click “Log in with Password” in the upper right corner. Then click “Register” to create a new user account.
- ◆ Enter your mobile number or email address, then check the box to agree to the **Privacy Policy, User Agreement, Children’s Privacy Statement, and Third Party Information Sharing List**. Click “Get Verification Code” .

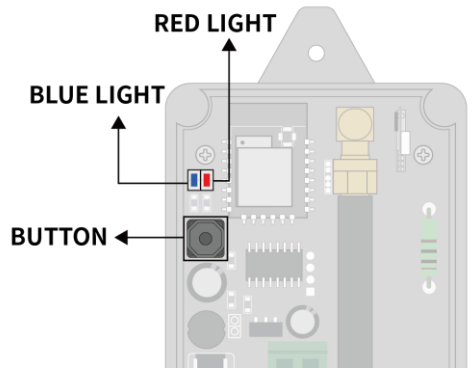


- ◆ Check your phone or email for the verification code. Enter the code in the app and set your account password. Your registration is now complete.



STEP 3 Preparation Before Adding to the App

- ◆ Ensure that a Wi-Fi network is available for both your smartphone and the WiFi remote control. Before beginning the configuration, make sure your smartphone is connected to your home Wi-Fi network.
- ◆ Plug the power adapter directly into a power socket. The red indicator light on the control board of the WiFi remote control will turn on.

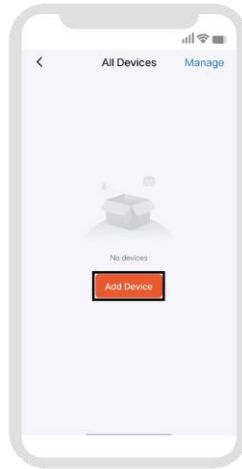
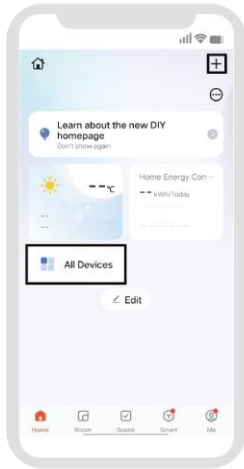


Notes:

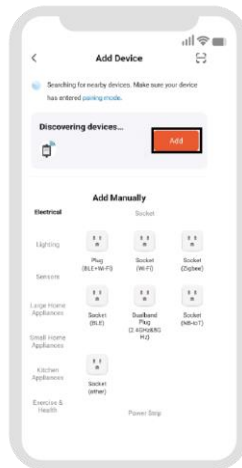
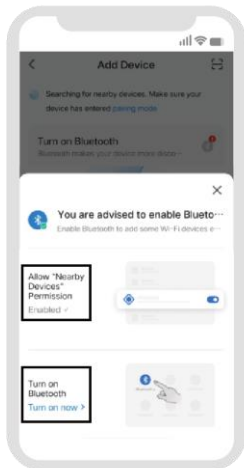
- *Ensure that your Wi-Fi network is set to 2.4GHz, as 5GHz is not supported.*
- *The distance between the WiFi remote control and the router should not exceed 15 meters (50 feet). If the Wi-Fi signal is weak or unavailable near the remote control, try moving the router closer to the device to minimize interference from walls and other obstacles, or consider using a Wi-Fi range extender.*

STEP 4 Add the WiFi Remote Control to the App

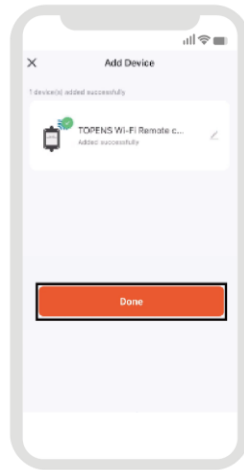
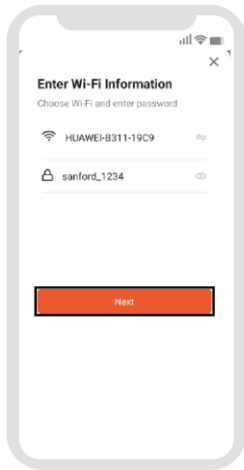
- ◆ Log in to the app and click “+” or “All Devices”, then click “Add Device” to begin adding a new WiFi remote devices.



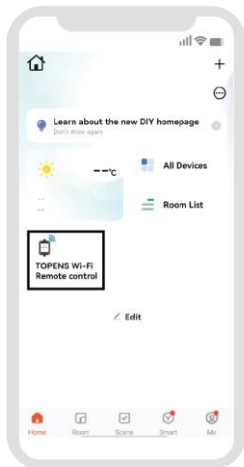
- ◆ Enable the “Nearby Devices” permission and turn on Bluetooth. The app will automatically detect the WiFi remote control. Click “Add” to begin setup.



- ◆ Enter your Wi-Fi network name and password, then click “Next” to pair the device. The app will confirm once the device has been successfully added.



- ◆ Tap the newly added WiFi remote control to access the main control interface. You can now operate the device directly from your smartphone.



Notes:

- *Ensure that your Wi-Fi network is set to 2.4GHz, as 5GHz is not supported.*
- *Enable location permissions on your smartphone to allow the app detect network information and search for nearby devices during setup.*
- *The WiFi remote control can be installed up to 230 meters (750 feet) from the gate or door opener.*
- *The WiFi remote control can ONLY be added to one master account. Additional users may access the device via sharing from the master account but must first download the app and register an account. The shared device must be compatible with Tuya Smart software.*
- *One WiFi remote control can be shared with up to 20 users, and one user can add up to 50 WiFi controllers.*
- *If the device is not detected automatically, press and hold the button on the control board of WiFi remote control to enter pairing mode, then try again.*

3 PROGRAMMING THE WIFI REMOTE CONTROL

There are four buttons (A, B, C, and D) on the main control interface of the app, which correspond directly to the four buttons on the TOPENS M12 Remote Control and perform the same functions.

Method 1: Programming Based on the LED Indicators of Both the Gate/Door Opener and the WiFi Remote Control

- ◆ Press and release the remote control programming button (such as CODE SW, LNSW, LEARN, etc.) on the control board of your gate or door opener. The CODE LED (or REM LED, LEARN LED, etc.) will turn on, or the LCD will display the programming mode.
- ◆ On the main control interface of the TUYA app, press the A, B, C or D button once, then press the same button again after the red indicator light on the WiFi remote control turns off.
- ◆ The CODE LED on the control board will flash for approximately 3 seconds and then turn off, or the LCD will return to standby mode, indicating that programming was successful.

Method 2: Programming Based on the LED Indicator of the Gate/Door Opener Only

- ◆ Press and release the remote control programming button (such as CODE SW, LNSW, LEARN, etc.) on the control board of your gate or door opener. The CODE LED (or REM LED, LEARN LED, etc.) will turn on, or the LCD will display the programming mode.
- ◆ On the main control interface of the TUYA app, press the A, B, C or D button once. The CODE LED on the control board will turn off.
- ◆ Wait for approximately 3 seconds, then press the same button again. The CODE LED will flash for about 3 seconds and then turn off, or the LCD will return to standby mode, indicating successful programming.

Note: Once paired, a smartphone logged into the master account can operate the gate opener via Bluetooth, even without a WiFi connection. The effective range is up to 10 meters (33 feet).

4 ERASING THE WIFI REMOTE CONTROL

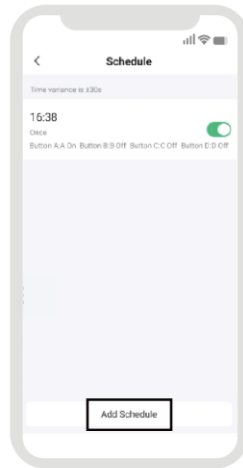
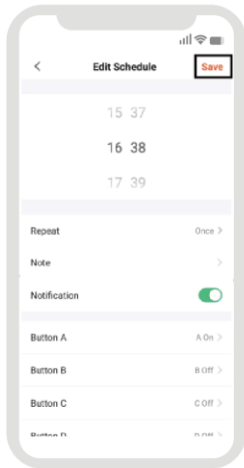
Press and hold the remote control programming button (such as CODE SW, LNSW, LEARN, etc.) on the control board of your gate or door opener until the CODE LED (or REM LED, LEARN LED, etc.) turns from ON to OFF, or the LCD displays “dL” . All previously programmed remote controls, including the WiFi remote control, have now been erased from the system.

5 MAIN INTERFACE INTRODUCTION

Schedule Interface

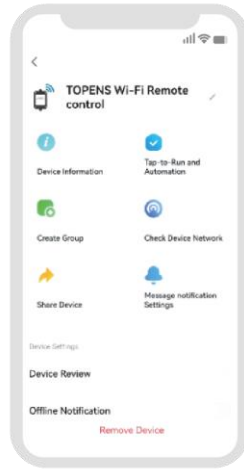
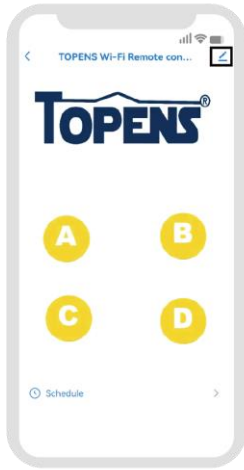
- ◆ You can create schedules to allow the WiFi remote control to operate automatically at specified times.
- ◆ Open the app, click “Schedule” , and then click “Add” to create a new schedule. After entering the schedule details, click “Save” .
- ◆ To add more schedules, simply click “Add Schedule” .

Note: The schedule feature functions only when the device is connected to Wi-Fi. It triggers gate movement at the specified time but does not determine whether the gate opens or closes.

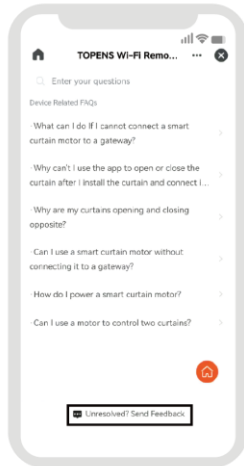
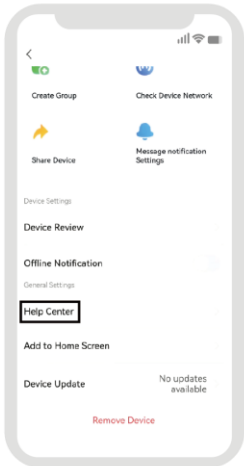


Setting Profile

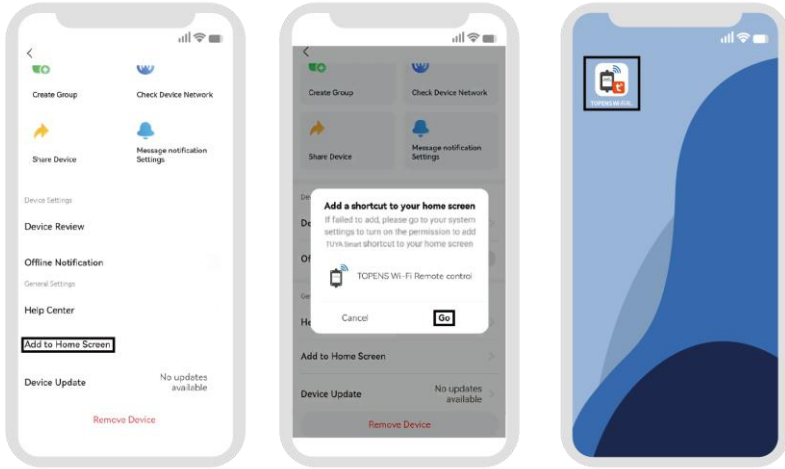
- ◆ Click the icon in the upper right corner of the main control interface to access the settings menu.
- ◆ In this menu, you can rename the WiFi remote control, view device information, manage Tap-to-Run and Automation settings, group multiple devices, check network status, share the device with others, configure notifications, rate the device, and enable offline alerts.



- ◆ For assistance, click “Help Center” to view common issues. If your concern is not listed, click “Unsolved? Send Feedback” to submit a request. You can also track the status of your feedback.



- ◆ Additionally, you can add a shortcut to your home screen, check for device updates, and remove the device from the app.



Feedback & Review

Your comments and suggestions are important to us as they help us provide the best possible service.

Should you have any need to contact us, the info below will help you get in touch:



TOPENS Website
www.topens.com

Contact Us:

E-mail: support@topens.com

Kindly include your purchase channel, order #, gate information, issue description and your contact information. All your concerns will be replied within 24 hours.

Tel: +1 (888) 750 9899 (Toll Free USA & Canada)