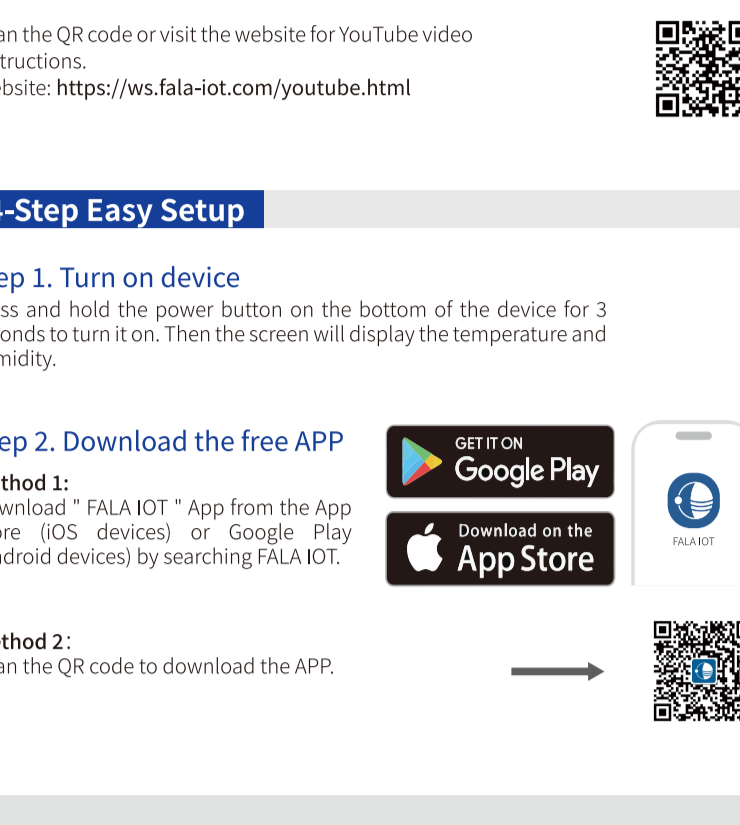




## The user manual

for the **S22D** remote detector

### Product Overview



#### Button Functions:

1. Power On/off (Press and hold for 3s)
2. Switch Display (Short press)
3. Mute During Sound & Light Alert (Short press)

### Quick Start Guide Video

Scan the QR code or visit the website for YouTube video instructions.

Website: <https://ws.fala-iot.com/youtube.html>



### 4-Step Easy Setup

#### Step 1. Turn on device

Press and hold the power button on the bottom of the device for 3 seconds to turn it on. Then the screen will display the temperature and humidity.

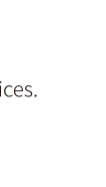
#### Step 2. Download the free APP

**Method 1:** Download " FALA IOT " App from the App Store (iOS devices) or Google Play (Android devices) by searching FALA IOT.



#### Method 2:

Scan the QR code to download the APP.



### 4-Step Easy Setup

#### Step 3. Create an account and Binding device

- 1 Create a new account or sign in to an existing FALA IOT account.
- 2 Click on the "+" to add device
- 3 Scan the QR code on the right side of the device
- 4 Name and confirm the paired device



### 4-Step Easy Setup

#### Step 4. Wi-Fi Setup

##### ⚠ Before You Begin:

\* This device supports 2.4GHz Wi-Fi only.

\* Make sure MAC address filtering is disabled on your router.

\* **Turn on Bluetooth and Location Services** on your phone — these are required temporarily to help the app detect the device more accurately.

\*\*No location data is collected or tracked.

\*\* **Bluetooth and Location Services are only used during setup.**

➔ Once setup is complete, you may turn off Bluetooth and Location Services.

#### Need help?

If you're having trouble with setup, contact our friendly support team at [support@fala-iot.com](mailto:support@fala-iot.com) or check the Help section in the app for common

### 4-Step Easy Setup

#### Setup Steps:

- 1 Double-press the device button. The screen will show "CFG", a Bluetooth icon, and a 99-second countdown.
- 2 Go to the "Home" page and click the "+" to Wi-Fi Setup.
- 3 Ensure Wi-Fi is working and Bluetooth is on. Tap "Next" to continue.
- 4 In the app, select your 2.4GHz Wi-Fi network, enter your Wi-Fi password (leave blank if there's no password). Then tap "Connect" and wait for the setup to complete. Once connected, the device screen will return to normal.



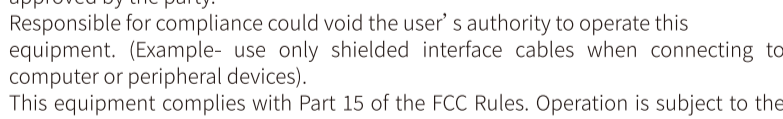
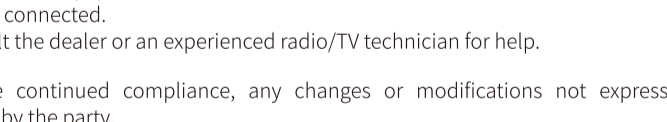
### External Sensor Port

The S22 series products have two sensor expansion ports reserved, in addition to the built-in temperature and humidity sensor.

The ports only support the connection of external sensors manufactured by FALA IOT. The device needs to be restarted after each plug/unplug sensor operation.

Press and hold for 3 seconds to power on/off

Short press to switch the displayed sensor



### Troubleshooting Guide

Product Series	S22D	
Error Codes	Cause	Solution
Err 01	Network module startup exception	Power off the device, wait for 1 minute, and then restart it.
Err 04	Router connection abnormality	1.Check if the device is connected to the network and try reconnecting it. 2.Check if the router is functioning properly or if there are not too many devices connected to it. You can try replacing the router.
Err 05	Server connection failure	1.Check router for smooth Internet.
Err 06		2.Confirm no device restrictions on router.
Err 07		3.Consider upgrading router for better performance if overloaded.
Err 12	Network module startup exception	Power off the device, wait for 1 minute, and then restart it.
—	Sensor probe failure.	
Momentary value is -45°C	Check if there is any wire wrapped around the probe.	

#### Attention

1. S22AN/DN does not have built-in sensors, please connect external sensors first.
2. If the display issue persists after following the above troubleshooting steps, please contact our friendly support team at [support@fala-iot.com](mailto:support@fala-iot.com).

### One-Year Limited Warranty

We stand behind the quality of your FALA IOT product. It's covered against defects in materials and workmanship for one year from your purchase date. If something goes wrong during normal use, we'll repair or replace your device—or refund your purchase.

Please remember to back up your important data regularly. This warranty covers hardware repairs only and does not include data recovery. It applies only to the original buyer and can't be transferred.

This warranty doesn't cover damage caused by unauthorized repairs or modifications, accidents, misuse, or natural disasters like floods and lightning. Cosmetic damage or damage after the warranty expires is also not covered.

To get help, just send your proof of purchase to [support@fala-iot.com](mailto:support@fala-iot.com), and our customer service team will guide you through the process.

#### Note:

Where allowed by law, implied warranties are limited. We're not responsible for any special or consequential damages related to your product. Your legal rights may vary depending on your state.

### Product Specifications

Model	S22D
Communication Protocol	2.4GHz Wi-Fi & Bluetooth 5.2
Average Power Consumption	≤15mW
Data Upload Frequency	≥3 minutes per upload (adjustable)
Alarm Delay	About 15 seconds (affected by network signal)
Operating Ambient Temperature	-20°C ~ + 60°C (-4°F ~ + 140°F)
Temperature Measurement Range	-20°C ~ + 60°C (-4°F ~ + 140°F)
Temperature Measurement Accuracy	±0.3°C (0.6°F)
Humidity Measurement Range	0~100%RH
Humidity Measurement Accuracy	±3%RH
Battery	Rechargeable lithium battery
Charging	USB TypeC
Adapter	5V1A
Power Time	About 4 months (@ 5-min uploads in good signal)
Device Dimensions	90mm*90mm*32mm
External Sensor Ports	Yes
Data Storage Duration	1 Year (@5min upload)

### FCC Compliance

#### FCC ID:2BQJH-S22D

This equipment has been tested and found to comply with the limits for a Class B digital device, pursuant to part 15 of the FCC rules. These limits are designed to provide reasonable protection against harmful interference in a residential installation.

This equipment generates, uses and can radiate radio frequency energy and, if not installed and used in accordance with the instructions, may cause harmful interference to radio communications. However, there is no guarantee that interference will not occur in a particular installation. If this equipment does cause harmful interference to radio or television reception, which can be determined by turning the equipment off and on, the user is encouraged to try to correct the interference by one or more of the following measures:

- Reorient or relocate the receiving antenna.
- Increase the separation between the device and receiver.
- Connect the equipment into an outlet on a circuit different from that to which the receiver is connected.
- Consult the dealer or an experienced radio/TV technician for help.

To assure continued compliance, any changes or modifications not expressly approved by the party.

Responsible for compliance could void the user's authority to operate this equipment. (Example- use only shielded interface cables when connecting to computer or peripheral devices).

This equipment complies with Part 15 of the FCC Rules. Operation is subject to the following two conditions:

- (1) This device may not cause harmful interference, and
- (2) This device must accept any interference received, including interference that may cause undesired operation.

### FCC Compliance

#### FCC Radiation Exposure Statement:

The equipment complies with FCC Radiation exposure limits set forth for uncontrolled environment. This product should be installed and operated with minimum distance 20cm between the radiator and your body.

#### Cautions

1. Please use this product in an area with good signal coverage.
2. Place this product in a cool, well-ventilated location or add a sunshade to avoid direct sunlight that can cause the shell to heat up, as it will severely affect the measurement accuracy.
3. Please keep the device exterior clean.
4. This is a high-precision device.Void warranty if disassembled. Contact support for repairs.

#### Alerts

**Email Alerts:** Automatically enabled when you register or link an email address. No daily limit.

**SMS Alerts:** Disabled by default. When enabled, you can receive up to 20 SMS alerts per day.

**Local Sound & Light Alerts:** Enabled by default, this feature lets you customize sound and light settings independently, adjust the alert duration, and disable it in the app if needed. You can also press the power button to temporarily mute the alert.

### Device Placement

- **Freestanding:** Place on a flat surface in the area you wish to monitor.
- **Mount it:** Using an adhesive strip.
- **Hang it:** Using the provided lanyard or cable tie.

### Battery Information

Your FALA IOT monitor has a built-in rechargeable lithium battery. When fully charged, it can last up to 4 months (based on default settings: 5-minute upload intervals).

**Note:** More frequent data uploads will shorten battery life. This device is engineered for long-term, low-maintenance operation.

#### Why Lithium Batteries?

Lithium batteries are ideal for harsh environments — both hot and cold. Unlike alkaline batteries, they deliver reliable performance in extreme temperatures where other types may fail.

#### Power Outage Monitoring

To use the device as a power outage monitor, keep it plugged in continuously. You'll receive automatic email alerts when power goes out and when it is restored, helping you stay aware and protected.

### Certificate Of Conformity

	Inspector:	
	Production Date:	
	SeePackaging	

Xuzhou Fala Electronic Technology Co., Ltd.

Address: C10, Yongjia Science and Technology Park, Xuzhou, Jiangsu Province, China.

Need Assistance?

Email: [support@fala-iot.com](mailto:support@fala-iot.com)

Sensor Login: [fala-iot.com/ipc](http://fala-iot.com/ipc)