



JLAB
EPIC
KEYBOARD

We love that you are rocking JLab!
We take pride in our products and fully stand behind them.



YOUR WARRANTY

All warranty claims are subject to JLab authorization and at our sole discretion. Retain your proof of purchase to ensure warranty coverage.



CONTACT US

Reach out to us at support@jlab.com or visit jlab.com/contact

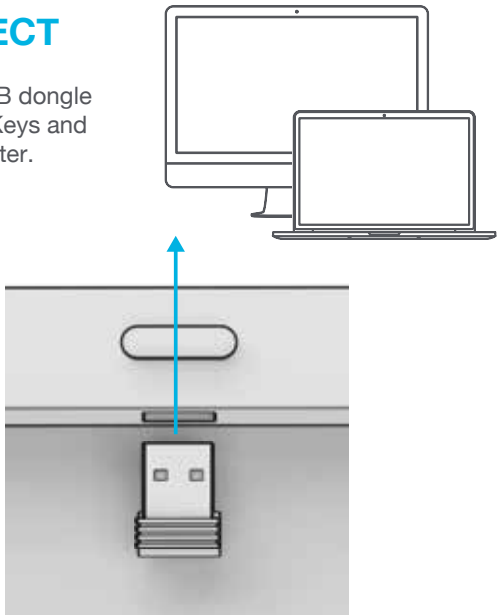
REGISTER TODAY

jlab.com/register

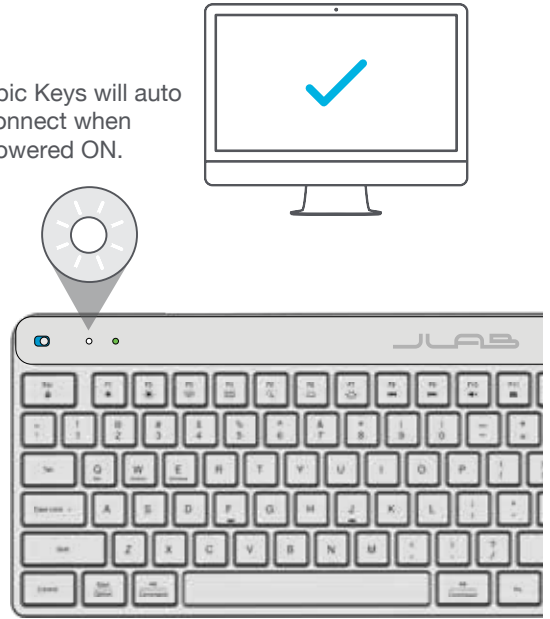
Product updates | How-to tips
FAQs & more

1 2.4 CONNECT

Remove 2.4G USB dongle from under Epic Keys and install into computer.



Epic Keys will auto connect when powered ON.



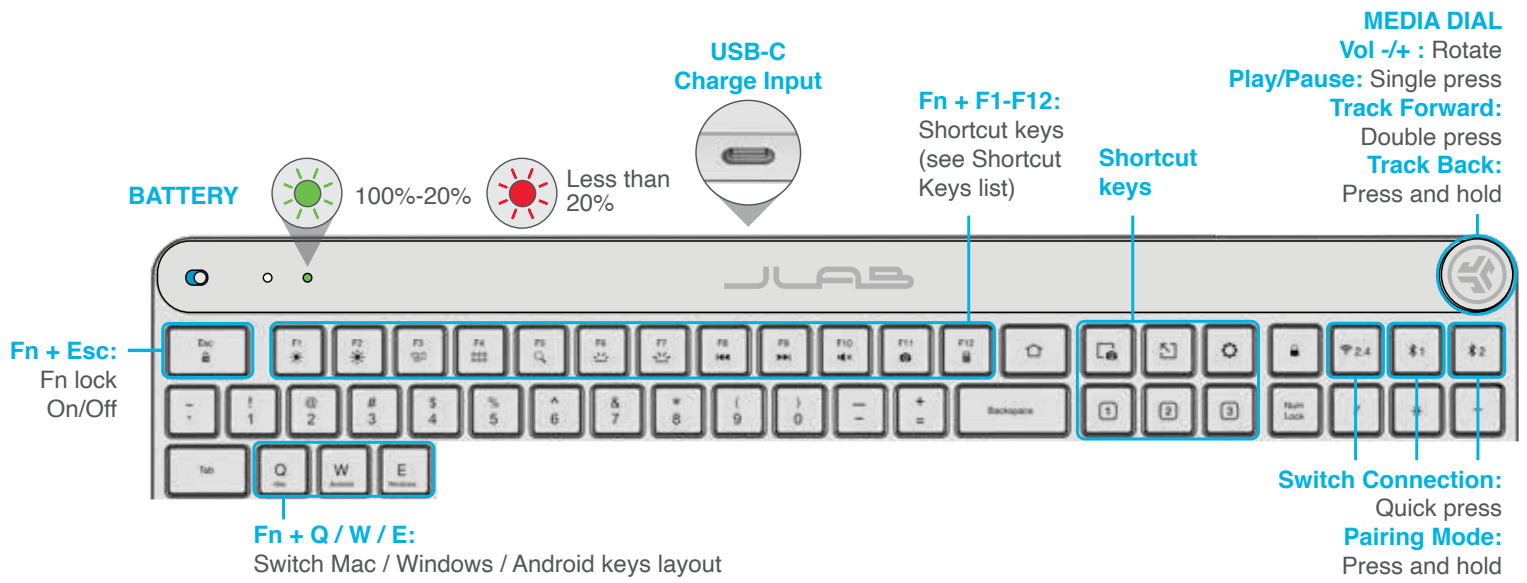
2 BLUETOOTH CONNECT

Press and hold either 1 or 2 for Pairing Mode (Key flashes when in Pairing Mode)

Select "JLab Epic Keys" in your device settings.

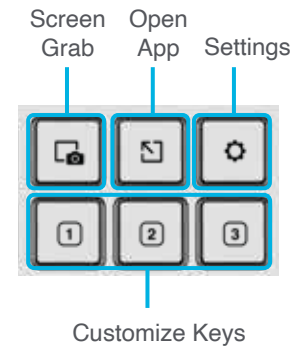


3 KEYS



SHORTCUT KEYS

Fn +	MAC	PC	Android
Esc	FN Lock	FN Lock	FN Lock
F1	Brightness -	Brightness -	Brightness -
F2	Brightness +	Brightness +	Brightness +
F3	Task Control	Task Control	N/A
F4	Show Applications	Notification Center	N/A
F5	Search	Search	Search
F6	Backlit -	Backlit -	Backlit -
F7	Backlit +	Backlit +	Backlit +
F8	Track Back	Track Back	Track Back
F9	Track Forward	Track Forward	Track Forward
F10	Mute	Mute	Mute
F11	Screenshot	Screenshot	N/A
F12	N/A	Calculator	N/A



Customize the Epic Keys with the JLab App
[JLab.com/software](https://www.jlab.com/software)



[Shop products](#) | [Product alerts](#) | [Burn-in your headphones](#)

JLab Store + Burn-in Tool

