



JLAB®
JBUDS MINI
EARBUDS

We love that you are rocking JLab!
We take pride in our products and fully stand behind them.



YOUR WARRANTY

All warranty claims are subject to JLab authorization and at our sole discretion. Retain your proof of purchase to ensure warranty coverage.



CONTACT US

Reach out to us at support@jlab.com or visit jlab.com/contact

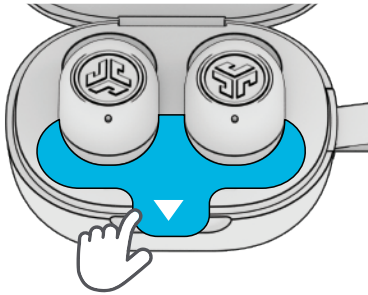
REGISTER TODAY

jlab.com/register

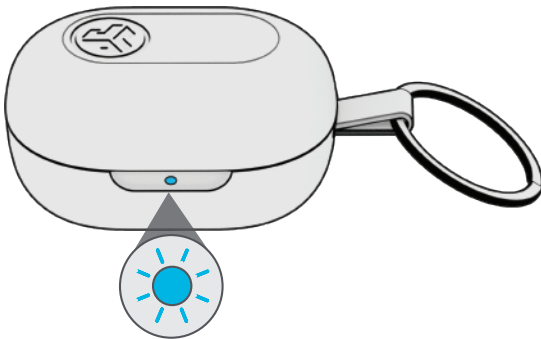
Product updates | How-to tips
FAQs & more

PAIR UP

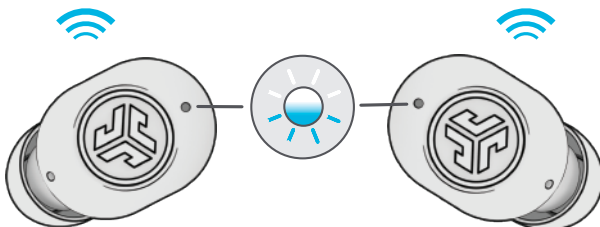
1 Remove pull tab. Close case door with earbuds.



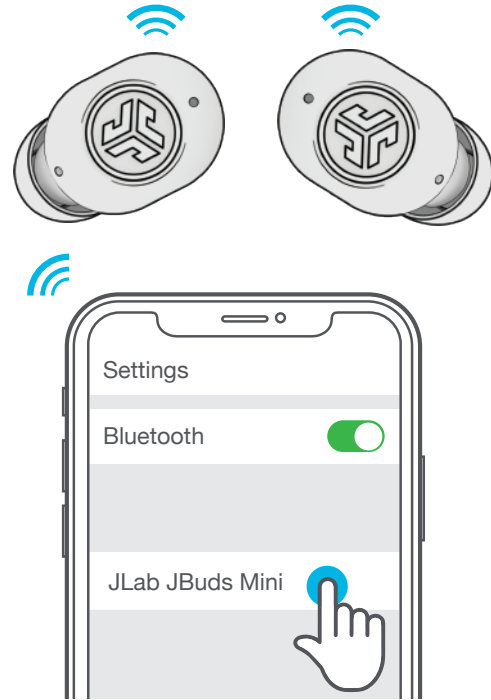
2 Light on case indicates charge. Remove earbuds from case.



3 One earbud blinks blue/white = Ready to Pair

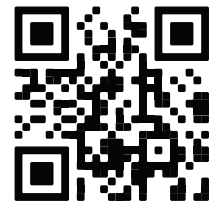


4 Select "JLab JBuds Mini" in your Bluetooth settings to connect.



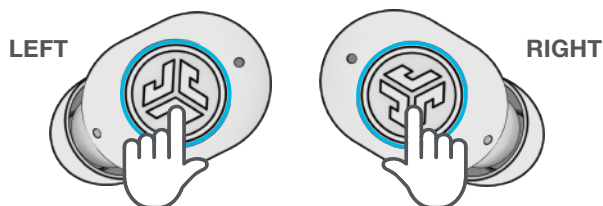
Voice prompt "Bluetooth connected" followed by **lights off** will indicate connection.

Customize JBuds Mini features with the JLab App ▶



SCAN ME

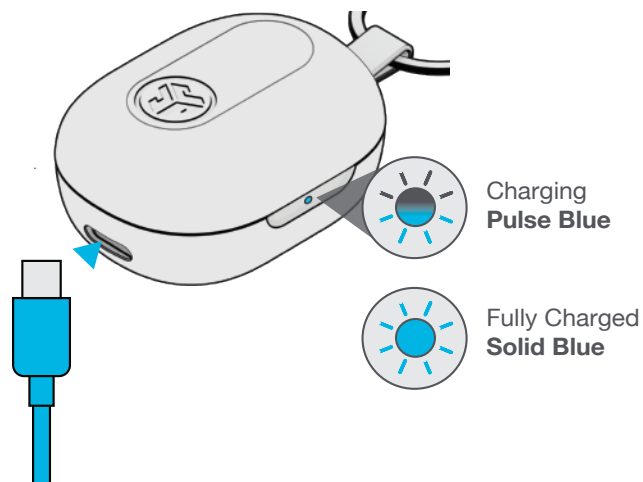
GO AHEAD, PRESS THE BUTTON



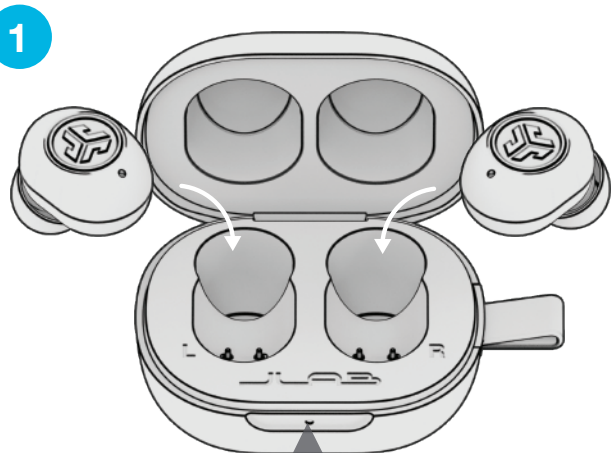
- | | |
|---|-------------------------------------|
| VOLUME DOWN: 1x | VOLUME UP: 1x |
| VOICE ASSISTANT: 2x | PLAY/PAUSE: 2x |
| MUSIC/MOVIE MODE:
Press Hold | TRACK FORWARD:
Press Hold |
| EQ CHANGE: 3x | BE AWARE: 3x |
| ANSWER CALL: 1x | |
| HANG UP CALL: 2x | |
| REJECT INCOMING CALL: Press Hold | |

GET CHARGED (CASE)



Connect the JBuds Mini to computer or USB 5V 1A (or less) output device.



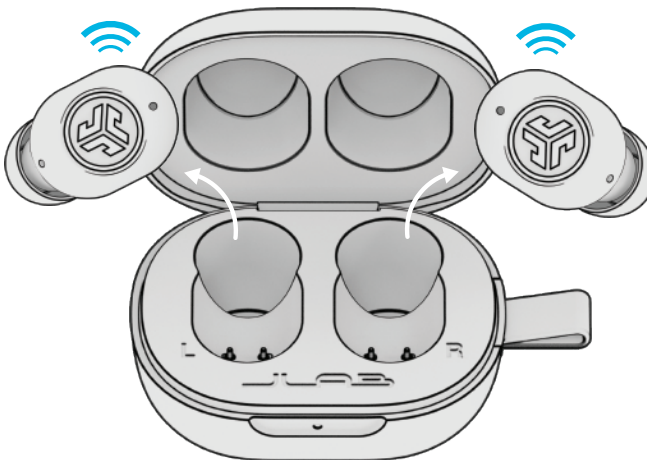
GET CHARGED (EARBUDS)



1

-  **Solid Blue**
Case 100-30%
-  **Blinks 4x Red**
Case less than 30% (charge case)


2 Earbuds will auto power on and connect when removed.




THE RIGHT SOUND FOR EVERY MOMENT

EQUALIZER MODES




"JLab SIGNATURE"
 JLab C3™ signature sound with amplified vocals and bass
BEST FOR
 Best option for most music
 Pop, rock, country, electronic and more

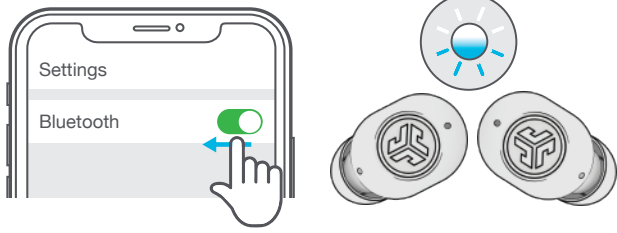

"BASS BOOST"
 Amplified bass and sub-bass
BEST FOR
 Working out, sport and fitness
 Hip hop, rap, electronic


"BALANCED"
 Even sound with no additional sound enhancements
BEST FOR
 Podcasts, Audiobooks
 Classical music

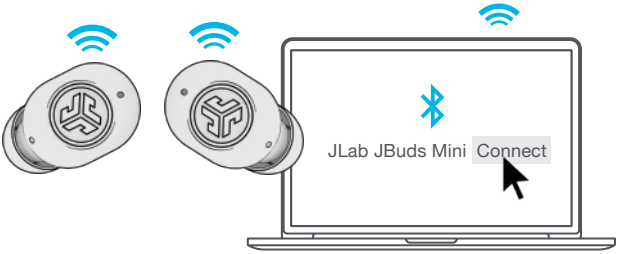

"CUSTOM"
 Personalize your EQ through the JLab App.

MULTIPOINT

- 1 Once **FIRST** device is connected, turn off Bluetooth in device settings. JBuds Mini will auto enter Bluetooth Pairing.



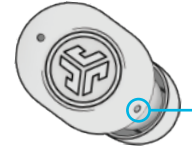
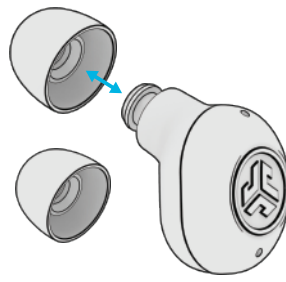
- 2 Enter your **SECOND** device Bluetooth settings and connect to JBuds Mini.



- 3 Enter your **FIRST** device Bluetooth settings. Turn on Bluetooth and connect to JBuds Mini.

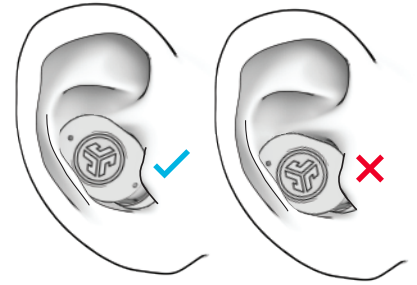


FIND YOUR FIT



MICROPHONE
Do not cover microphone by the ear. Voice calls will become inaudible.

Try all ear tips for best fit and proper seal.



QUICK TIPS

- The left or right earbud can be used independently for music and phone calls. Simply choose one and take out of the case to connect.
- Fully dry off earbuds before putting in the charging case to avoid any damage to the case. The earbuds are sweat/water resistant but the case is not.
- Choosing the correct ear tip makes a significant improvement in audio quality due to proper seal for the driver. Try all ear tips for best results.

WARNING

Fully dry off the earbuds before putting in the charging case to avoid any damage to the case.

The earbuds are sweat/water resistant but the case is not.



TROUBLESHOOTING

CONNECTION FAILURE OR EARBUDS DISCONNECTED FROM EACH OTHER (MANUAL RESET)

- 1 Keep the earbuds in the charging case and forget "JLab JBuds Mini" from your Bluetooth device settings.
- 2 Quick tap 7x on one earbud in charging case. Earbud blinks blue 4 times.
- 3 Quick tap 7x on other earbud in charging case. Earbud blinks blue 4 times.
- 4 Take both earbuds out of the charging case. One earbud will be solid white and other will blink blue/white indicating ready to pair to your device.

Instructional videos at: [JLAB.COM/MANUALS](https://www.jlab.com/manuals)

DOWNLOAD THE APP

Customize JBuds Mini features and update the latest software.

Download the **JLab App** in Apple/Google Play Store.



SCAN ME



[Shop products](#) | [Product alerts](#) | [Burn-in your headphones](#)

JLab Store + Burn-in Tool



[JLAB.COM](https://www.jlab.com)