

VEVOR®

TOUGH TOOLS, HALF PRICE

Technical Support and E-Warranty Certificate

www.vevor.com/support

Quick Change Tool Post Set User Manual

MODLE: 250-100(6), 250-200(6), 250-100(8), 250-200(8)

250-000(6), 250-111(6), 250-222(6),

250-111(8), 250-222(8)

We continue to be committed to provide you tools with competitive price. "Save Half", "Half Price" or any other similar expressions used by us only represents an estimate of savings you might benefit from buying certain tools with us compared to the major top brands and does not necessarily mean to cover all categories of tools offered by us. You are kindly reminded to verify carefully when you are placing an order with us if you are actually Saving Half in comparison with the top major brands.

VEVOR[®]

TOUGH TOOLS, HALF PRICE

QUICK CHANGE TOOL POST SET

MODEL: 250-100(6), 250-200(6), 250-100(8), 250-200(8), 250-000(6),
250-111(6), 250-222(6), 250-111(8), 250-222(8)



(The picture is for reference only, please refer to the actual object)

NEED HELP? CONTACT US!

Have product questions? Need technical support? Please feel free to contact us:

Technical Support and E-Warranty Certificate
www.vevor.com/support

This is the original instruction, please read all manual instructions carefully before operating. VEVOR reserves a clear interpretation of our user manual. The appearance of the product shall be subject to the product you received. Please forgive us that we won't inform you again if there are any technology or software updates on our product.

QUICK CHANGE TOOL POST

Features:

- All working parts hardened & ground.
- Maximum rigidity for chatter-free performance. No time wasted with shims.
- Increases productivity of all lathe operations.
- Completely sealed for maintenance free operation.
- Change tools in seconds.



◆ PISTON TYPE TOOL POST SETS

ORDER NO.	LATHE SWING	6 PIECES EACH SET INCLUDES (6 PCS/SET)
250-100 (6)	12"	250-100, 250-101, 250-102, 250-104 , 250-107 , 250-110 EACH 1PC
250-200 (6)	10"-15"	250-200, 250-201, 250-202, 250-204, 250-207 , 250-210 EACH 1PC
250-300 (6)	13"-18"	250-300, 250-301, 250-302, 250-304, 250-307 , 250-310 EACH 1PC
250-400 (6)	14"-20"	250-400, 250-401, 250-402, 250-404, 250-407 , 250-410 EACH 1PC

ORDER NO.	LATHE SWING	8 PIECES EACH SET INCLUDES(8 PCS/SET)
250-100 (8)	12"	250-100, 250-101, 250-102, 250-104 , 250-107 , 250-110 EACH 1PC 250-101T*2 PCS
250-200 (8)	10"-15"	250-200, 250-201, 250-202, 250-204, 250-207 , 250-210 EACH 1PC 250-201T*2 PCS



WEDGE TYPE TOOL POST SETS

Each set consists of one piston type tool post and one of each of 5 holds

ORDER NO.	LATHE SWING	6 PIECES EACH SET INCLUDES (6 PCS/SET)
250-000 (6)	8"	250-000, 250-001, 250-002, 250-004, 250-007, 250-010 EACH 1PC
250-111 (6)	12"	250-111, 250-101, 250-102, 250-104, 250-107, 250-110 EACH 1PC
250-222 (6)	10"-15"	250-222, 250-201, 250-202, 250-204, 250-207, 250-210 EACH 1PC
250-333 (6)	13"-18"	250-333, 250-301, 250-302, 250-304, 250-307, 250-310 EACH 1PC
250-444 (6)	14"-20"	250-444, 250-401, 250-402, 250-404, 250-407, 250-410 EACH 1PC

ORDER NO.	LATHE SWING	8 PIECES EACH SET INCLUDES(8 PCS/SET)
250-111(8)	12"	250-111, 250-101, 250-102, 250-104, 250-107, 250-110 EACH 1PC 250-101T *2PCS
250-222(8)	10"-15"	250-222, 250-201, 250-202, 250-204, 250-207, 250-210 EACH 1PC 250-201T *2PCS

Quick Change Tool Post Piston Style-accessories



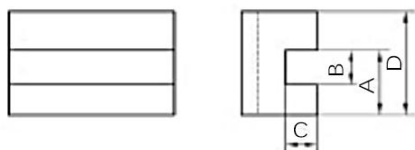
ORDER NO.	SWING FOR LATHE	A	B	C	D
	INCH	INCH	INCH	INCH	INCH
250-100	12	2- 1/2	3-7/8	2-1/4	9/16
250-200	10-15	3	4 - 5/8	2 - 3/4	5/8
250-300	13-18	3 - 3/8	5 - 1/8	3	3/4
250-400	14-20	4	6 - 1/4	3 5/8	7/8

Quick Change Tool Post Wedge Style



ORDER NO.	SWING FOR LATHE	A	B	C	D
	INCH	INCH	INCH	INCH	INCH
250-000	12	1.75	2.95	1.57	0.40
250-111	10-15	2-1/2	3-7/8	2-1/4	9/16
250-222	13-18	3	4-5/8	2-3/4	5/8
250-333	14-20	3-3/8	5-1/8	3	3/4
250-444	17-48	4	6-1/4	3-5/8	7/8

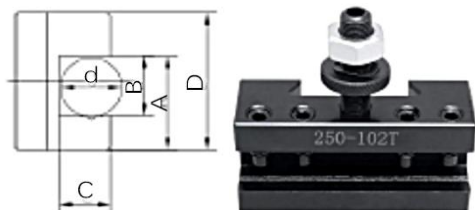
Turning and facing holder



ORDER NO.	A	B	C	D	TOOL BIT RANGE
	INCH	INCH	INCH	INCH	INCH
250-001	0.86	0.5	0.327	1.1	3/16—1/2
250-101	1	1/2	29/64	1—1/2	3/16—1/2
250-201	1—1/8	5/8	1/2	1—3/4	1/4—5/8
250-301	1—7/16	3/4	5/8	2—1/8	1/2—3/4
250-401	1—12/32	1	3/4	2—1/2	1/2—1

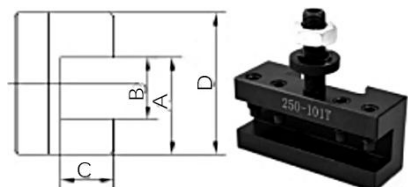
Suitable for any size smaller than max. Height h.

Turning and facing holder



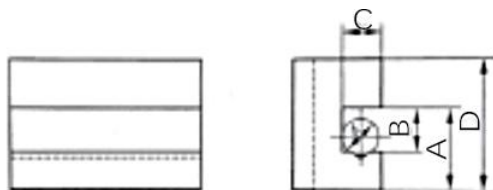
ORDER NO.	A	B	C	D	TOOL BIT RANGE
	INCH	INCH	INCH	INCH	INCH
250-102T	1"	5/8"	1/2"	1-1/2"	3/16-5/8"
250-202T	1-1/8"	3/4"	5/8"	1-3/4"	1/4-3/4"

Turning and facing holder



ORDER NO.	A	B	C	D
	INCH	INCH	INCH	INCH
250-101T	1"	5/8"	1/2"	1-1/2"
250-201T	1-1/8"	3/4"	5/8"	1-3/4"

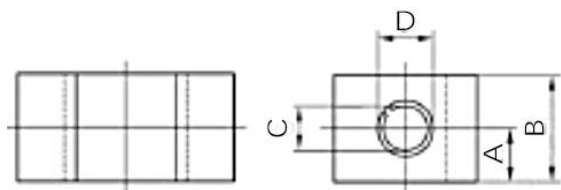
Boring ,turning and facing holder



ORDER NO.	A	B	C	D	TOOL BIT RANGE
	INCH	INCH	INCH	INCH	INCH
250-002	0.66	0.5	0.327	1.1	3/16—1/2
250-102	1	1/2	29/64	1—1/2	3/16—1/2
250-202	1—1/8	5/8	1/2	1—3/4	1/4—5/8
250-302	1—7/16	3/4	5/8	2—1/8	1/2—3/4
250-402	1—12/32	1	3/4	2—1/2	1/2—1

V groove hold round shank boring bars and tools as well as square tool bits to machine end face, external, cutting, boring etc.

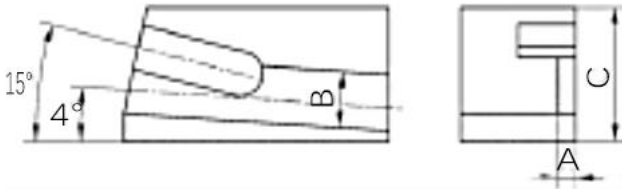
Heavy Duty Boring Bar Holder



ORDER NO.	A	B	C	D
	INCH	INCH	INCH	INCH
250-004	0.47	1.18	3/8	1/2
250-104	3/4	1—1/2	5/8	3/4
250-204	7/8	1—3/4	3/4	1
250-304	1	2	3/4	1
250-404	1—1/4	2—1/2	1	1—1/4
250-141	7/8	1—3/4	3/4	1
250-241	1	2	1	1—1/4
250-341	1—1/8	2—1/4	1	1—1/4
250-441	1—3/8	2—3/4	1—1/4	1—1/2

Split bushing suitable for small boring bars & drill

Universal parting blade tool holder



ORDER NO.	A	B	C	CLAMPING RANGE	TOOL BIT RANGE
	INCH	INCH	INCH	INCH	INCH
250-010	0.53	1.77	1.18	3/16—1/2	1/2*3/16*3/16
250-110	7/8	1—1/2	1—9/16	3/16—1/2	3/4*3/8*1/4
250-210	1	2—5/8	1—3/4	1/4—5/8	
250-310	1—3/16	3—1/8	2	1/2—3/4	
250-410	1—7/16	3—3/4	2—1/2	1/2—1	

It may be used for knuring, if square tool is used, it may process end face, external cutting, boring etc.

Lips: In order to provide better protection for your product, we will apply anti rust oil, which may cause oil leakage.

Manufacturer: Shanghai muxin muyeyouxiangongsi

Address: Shuangchenglu 803nong11hao1602A-1609shi, baoshanqu, shanghai 200000 CN.

Imported to AUS: SIHAO PTY LTD. 1 ROKEVA STREET EASTWOOD NSW 2122 Australia

Imported to USA: Sanven Technology Ltd. Suite 250, 9166 Anaheim Place, Rancho Cucamonga, CA 91730



E-CrossStu GmbH
Mainzer Landstr.69, 60329 Frankfurt am Main.



YH CONSULTING LIMITED.
C/O YH Consulting Limited Office 147, Centurion House,
London Road, Staines-upon-Thames, Surrey, TW18 4AX

VEVOR®

TOUGH TOOLS, HALF PRICE

Technique Certificat d'assistance et de garantie électronique

www.vevor.com/support

Ensemble de poteaux d'outils à changement rapide Manuel d'utilisation

MODÈLE : 250-100(6), 250-200(6), 250-100(8), 250-200(8)

250- 000 (6), 250-1 11 (6), 250- 222 (6),

250- 111 (8), 250- 222 (8)

Nous continuons à nous engager à vous fournir des outils à des prix compétitifs.
« Économisez la moitié », « Moitié prix » ou toute autre expression similaire utilisée par nous uniquement
représente une estimation des économies dont vous pourriez bénéficier en achetant certains outils
avec nous par rapport aux grandes marques et ne signifie pas nécessairement couverture toutes les catégories d'outils que nous proposons. Nous vous rappelons de bien vouloir vérifier soigneusement
lorsque vous passez une commande chez nous si vous êtes réellement Économie Moitié par rapport aux plus grandes marques.

VEVOR[®]
TOUGH TOOLS, HALF PRICE

**QUICK CHANGE
TOOL POST SET**

MODÈLE : 250-100(6), 250-200(6), 250-100(8), 250-200(8) , 250- 000 (6),
250-1 11 (6), 250- 222 (6), 250- 111 (8), 250- 222 (8)



(L'image est à titre de référence uniquement, veuillez vous référer à l'objet réel)

NEED HELP? CONTACT US!

Have product questions? Need technical support? Please feel free to contact us:

Technical Support and E-Warranty Certificate
www.vevor.com/support

This is the original instruction, please read all manual instructions carefully before operating. VEVOR reserves a clear interpretation of our user manual. The appearance of the product shall be subject to the product you received. Please forgive us that we won't inform you again if there are any technology or software updates on our product.

QUICK CHANGE TOOL POST

Caractéristiques:

- Toutes les pièces de travail sont trempées et rectifiées.
- Rigidité maximale pour des performances sans bavardage. Pas de perte de temps avec des cales.
- Augmente la productivité de toutes les opérations de tournage.
- Entièrement scellé pour un fonctionnement sans entretien.
- Changez d'outils en quelques secondes.



◆ ENSEMBLES DE POST-OUTILS DE TYPE PISTON

COMMANDE NON.	TOUR À BALANCEMENT	6 PIÈCES CHAQUE ENSEMBLE COMPREND (6 PCS/ENSEMBLE)
250-100 (6)	12"	250-100, 250-101, 250-102, 250-104, 250-107, 250-110 CHACUN 1PC
250-200 (6)	10"-15"	250-200, 250-201, 250-202, 250-204, 250-207, 250-210 CHAQUE 1PC
250-300 (6)	13"-18"	250-300, 250-301, 250-302, 250-304, 250-307, 250-310 CHAQUE 1PC
250-400 (6)	14"-20"	250-400, 250-401, 250-402, 250-404, 250-407, 250-410 CHAQUE 1PC

COMMANDE NON.	TOUR À BALANCEMENT	8 PIÈCES CHAQUE ENSEMBLE COMPREND (8 PCS/ENSEMBLE)
250-100 (8)	12"	250-100, 250-101, 250-102, 250-104, 250-107, 250-110 CHACUN 1PC 250-101T*2 PCS

250-200 (8)	10"-15"	250-200, 250-201, 250-202, 250-204, 250-207, 250-210 CHAQUE 1PC 250-201T*2 PCS
-------------	---------	---



ENSEMBLES DE POTEAU D'OUTILS DE TYPE CALE

Chaque ensemble se compose d'un porte-outil à piston et d'un de chacun des 5 supports

COMMANDE NON.	TOUR À BALANCEMENT	6 PIÈCES CHAQUE ENSEMBLE COMPREND (6 PCS/ENSEMBLE)
250-000 (6)	8 "	250-000, 250-001, 250-002, 250-004, 250-007, 250-010 CHAQUE 1PC
250-111 (6)	12 "	250-111, 250-101, 250-102, 250-104, 250-107, 250-110 CHACUN 1PC
250-222 (6)	10 " -15 "	250-222, 250-201, 250-202, 250-204, 250-207, 250-210 CHAQUE 1PC
250-333 (6)	13 " -18 "	250-333, 250-301, 250-302, 250-304, 250-307, 250-310 CHAQUE 1PC
250-444 (6)	14 " -20 "	250-444, 250-401, 250-402, 250-404, 250-407, 250-410 CHAQUE 1PC

COMMANDE NON.	TOUR À BALANCEMENT	8 PIÈCES CHAQUE ENSEMBLE COMPREND (8 PCS/ENSEMBLE)
250-111 (8)	12 "	250-111, 250-101, 250-102, 250-104, 250-107, 250-110 CHACUN 1PC 250-101T * 2 PIÈCES
250-222 (8)	10 " -15 "	250-222, 250-201, 250-202, 250-204, 250-207, 250-210 CHAQUE 1PC 250-201T * 2 PIÈCES

Outil de changement rapide de style piston de poteau - accessoires



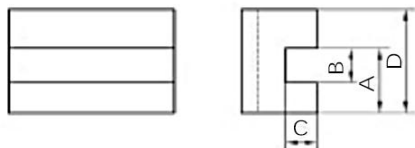
ORDER NO.	SWING FOR LATHE	A	B	C	D
	INCH	INCH	INCH	INCH	INCH
250-100	12	2- 1/2	3-7/8	2 -1/4	9/16
250-200	10-15	3	4 - 5/8	2 - 3/4	5/8
250-300	13-18	3 - 3/8	5 - 1/8	3	3/4
250-400	14-20	4	6 -1/4	3 5/8	7/8

Outil à changement rapide de type cale



ORDER NO.	SWING FOR LATHE	A	B	C	D
	INCH	INCH	INCH	INCH	INCH
250-000	12	1.75	2.95	1.57	0.40
250-111	10-15	2-1/2	3-7/8	2-1/4	9/16
250-222	13-18	3	4-5/8	2-3/4	5/8
250-333	14-20	3-3/8	5-1/8	3	3/4
250-444	17-48	4	6-1/4	3-5/8	7/8

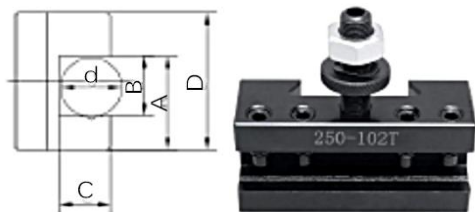
Porte-outils de tournage et de dressage



ORDER NO.	A	B	C	D	TOOL BIT RANGE
	INCH	INCH	INCH	INCH	INCH
250-001	0.86	0.5	0.327	1.1	3/16—1/2
250-101	1	1/2	29/64	1—1/2	3/16—1/2
250-201	1—1/8	5/8	1/2	1—3/4	1/4—5/8
250-301	1—7/16	3/4	5/8	2—1/8	1/2—3/4
250-401	1—12/32	1	3/4	2—1/2	1/2—1

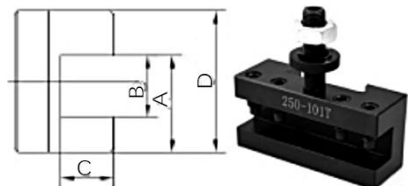
Convient à toute taille inférieure à la hauteur maximale h.

Porte-outils de tournage et de dressage



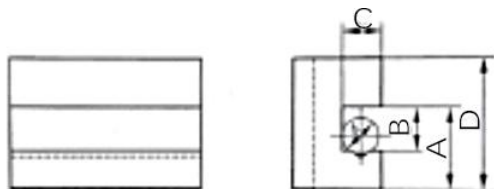
ORDER NO.	A	B	C	D	TOOL BIT RANGE
	INCH	INCH	INCH	INCH	INCH
250-102T	1"	5/8"	1/2"	1-1/2"	3/16-5/8"
250-202T	1-1/8"	3/4"	5/8"	1-3/4"	1/4-3/4"

Porte-outils de tournage et de dressage



ORDER NO.	A	B	C	D
	INCH	INCH	INCH	INCH
250-101T	1"	5/8"	1/2"	1-1/2"
250-201T	1-1/8"	3/4"	5/8"	1-3/4"

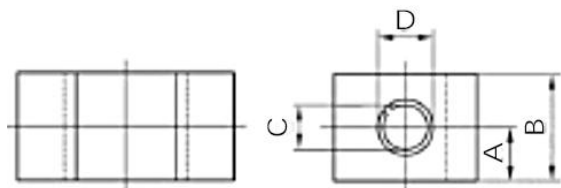
Porte-outils pour alésage, tournage et dressage



ORDER NO.	A	B	C	D	TOOL BIT RANGE
	INCH	INCH	INCH	INCH	INCH
250-002	0.66	0.5	0.327	1.1	3/16—1/2
250-102	1	1/2	29/64	1—1/2	3/16—1/2
250-202	1—1/8	5/8	1/2	1—3/4	1/4—5/8
250-302	1—7/16	3/4	5/8	2—1/8	1/2—3/4
250-402	1—12/32	1	3/4	2—1/2	1/2—1

La rainure en V maintient les barres d'alésage à tige ronde et les outils comme ainsi que des outils de perçage pour usiner la face d'extrémité, l'extérieur, la coupe, l'alésage, etc.

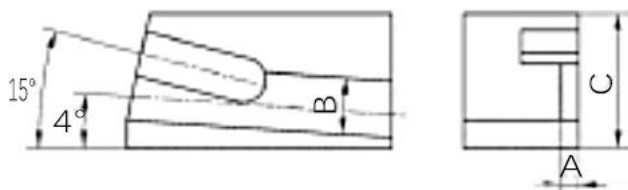
Support de barre d'alésage robuste



ORDER NO.	A	B	C	D
	INCH	INCH	INCH	INCH
250-004	0.47	1.18	3/8	1/2
250-104	3/4	1—1/2	5/8	3/4
250-204	7/8	1—3/4	3/4	1
250-304	1	2	3/4	1
250-404	1—1/4	2—1/2	1	1—1/4
250-141	7/8	1—3/4	3/4	1
250-241	1	2	1	1—1/4
250-341	1—1/8	2—1/4	1	1—1/4
250-441	1—3/8	2—3/4	1—1/4	1—1/2

Bague fendue adaptée aux petites barres d'alésage et aux perceuses

Porte-outil universel pour lame de séparation



ORDER NO.	A	B	C	CLAMPING RANGE	TOOL BIT RANGE
	INCH	INCH	INCH	INCH	INCH
250-010	0.53	1.77	1.18	3/16—1/2	1/2*3/16*3/16
250-110	7/8	1—1/2	1—9/16	3/16—1/2	3/4*3/8*1/4
250-210	1	2—5/8	1—3/4	1/4—5/8	
250-310	1—3/16	3—1/8	2	1/2—3/4	
250-410	1—7/16	3—3/4	2—1/2	1/2—1	

Il peut être utilisé pour le moletage, si un outil carré est utilisé, il peut traiter la face d'extrémité, la coupe externe, l'alésage, etc.

Lèvres : Afin d'offrir une meilleure protection à votre produit, nous appliquerons de l'huile antirouille, ce qui peut provoquer des fuites d'huile.

Manufacturer: Shanghaimuxinmuyeyouxiangongsi

Address: Shuangchenglu 803nong11hao1602A-1609shi, baoshanqu, shanghai 200000 CN.

Imported to AUS: SIHAO PTY LTD. 1 ROKEVA STREETEASTWOOD NSW 2122 Australia

Imported to USA: Sanven Technology Ltd. Suite 250, 9166 Anaheim Place, Rancho Cucamonga, CA 91730

EC	REP
-----------	------------

E-CrossStu GmbH
Mainzer Landstr.69, 60329 Frankfurt am Main.

UK	REP
-----------	------------

YH CONSULTING LIMITED.
C/O YH Consulting Limited Office 147, Centurion House,
London Road, Staines-upon-Thames, Surrey, TW18 4AX

VEVOR®

TOUGH TOOLS, HALF PRICE

Technisch Support und E-Garantie-Zertifikat
www.vevor.com/support

Schnellwechsel-Werkzeughaltersatz Bedienungsanleitung

MODUL: 250-100(6), 250-200(6), 250-100(8), 250-200(8)

250- 000 (6), 250-1 11 (6), 250- 222 (6),

250- 111 (8), 250- 222 (8)

Wir sind weiterhin bestrebt, Ihnen Werkzeuge zu wettbewerbsfähigen Preisen anzubieten.
"Sparen Sie die Hälfte", "Halber Preis" oder andere ähnliche Ausdrücke, die wir nur verwenden

stellt eine Schätzung der Einsparungen dar, die Sie durch den Kauf bestimmter Werkzeuge erzielen können

mit uns im Vergleich zu den großen Top-Marken und bedeutet nicht unbedingt, Abdeckung alle von uns angebotenen Werkzeugkategorien. Wir möchten Sie bitten, zu überprüfen sorgfältig

wenn Sie bei uns eine Bestellung aufgeben, wenn Sie tatsächlich Speichern Hälfte im Vergleich mit den Top-Großmarken.

VEVOR[®]
TOUGH TOOLS, HALF PRICE

**QUICK CHANGE
TOOL POST SET**

MODELL: 250-100(6), 250-200(6), 250-100(8), 250-200(8) , 250- 000 (6),
250-1 11 (6), 250- 222 (6), 250- 111 (8), 250- 222 (8)



(Das Bild dient nur als Referenz, bitte beziehen Sie sich auf das tatsächliche Objekt)

NEED HELP? CONTACT US!

Have product questions? Need technical support? Please feel free to contact us:

Technical Support and E-Warranty Certificate
www.vevor.com/support

This is the original instruction, please read all manual instructions carefully before operating. VEVOR reserves a clear interpretation of our user manual. The appearance of the product shall be subject to the product you received. Please forgive us that we won't inform you again if there are any technology or software updates on our product.

QUICK CHANGE TOOL POST

Merkmale:

- Alle Arbeitsteile gehärtet und geschliffen.
- Maximale Steifigkeit für vibrationsfreie Leistung. Keine Zeitverschwendung mit Unterlegscheiben.
- Erhöht die Produktivität aller Drehvorgänge.
- Vollständig versiegelt für wartungsfreien Betrieb.
- Werkzeugwechsel in Sekunden.



◆ KOLBENTYP-WERKZEUGHALTERSÄTZE

BEFEHL NEIN.	DREHBANK -SCHWENKEN	JEDES SET ENTHÄLT 6 STÜCKE (6 STÜCKE/SET)
250-100 (6)	12"	250-100, 250-101, 250-102, 250-104, 250-107, 250-110, je 1 Stück
250-200 (6)	10"-15"	250-200, 250-201, 250-202, 250-204, 250-207, 250-210, je 1 Stück.
250-300 (6)	13"-18"	250-300, 250-301, 250-302, 250-304, 250-307, 250-310, je 1 Stück
250-400 (6)	14"-20"	250-400, 250-401, 250-402, 250-404, 250-407, 250-410, je 1 Stück

BEFEHL NEIN.	DREHBANK -SCHWENKEN	8 STÜCKE, JEDES SET ENTHÄLT (8 STÜCKE/SET)
250-100 (8)	12"	250-100, 250-101, 250-102, 250-104, 250-107, 250-110, je 1 Stück, 250-101T*2 Stück
250-200 (8)	10"-15"	250-200, 250-201, 250-202, 250-204, 250-207, 250-210, je 1 Stück, 250-201T*2 Stück



WERKZEUGHALTER-SÄTZE IN KEILFORM

Jeder Satz besteht aus einem Werkzeughalter vom Typ Pison und jeweils einem der 5 Griffe

BEFEHL NEIN.	DREHBANK -SCHWENKE N	JEDES SET ENTHÄLT 6 STÜCKE (6 STÜCKE/SET)
250-000 (6)	8 "	250-000, 250-001, 250-002, 250-004, 250-007, 250-010, je 1 Stück
250-111 (6)	12 "	250-111, 250-101, 250-102, 250-104, 250-107, 250-110, je 1 Stück
250-222 (6)	10 " -15 "	250-222, 250-201, 250-202, 250-204, 250-207, 250-210, je 1 Stück
250-333 (6)	13 " -18 "	250-333, 250-301, 250-302, 250-304, 250-307, 250-310, je 1 Stück
250-444 (6)	14 " -20 "	250-444, 250-401, 250-402, 250-404, 250-407, 250-410, je 1 Stück

BEFEHL NEIN.	DREHBANK -SCHWENKEN	8 STÜCKE, JEDES SET ENTHÄLT (8 STÜCKE/SET)
250-111 (8)	12 "	250-111, 250-101, 250-102, 250-104, 250-107, 250-110, je 1 Stück 250-101T * 2 STK
250-222 (8)	10 " -15 "	250-222, 250-201, 250-202, 250-204, 250-207, 250-210, je 1 Stück 250-201T * 2 STK

Schnellwechsel-Werkzeughalter im Kolbenstil - Zubehör



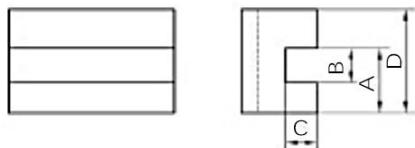
ORDER NO.	SWING FOR LATHE	A	B	C	D
	INCH	INCH	INCH	INCH	INCH
250-100	12	2- 1/2	3-7/8	2-1/4	9/16
250-200	10-15	3	4 - 5/8	2 - 3/4	5/8
250-300	13-18	3 - 3/8	5 - 1/8	3	3/4
250-400	14-20	4	6 - 1/4	3 5/8	7/8

Schnellwechsel-Werkzeughalter im Keilstil



ORDER NO.	SWING FOR LATHE	A	B	C	D
	INCH	INCH	INCH	INCH	INCH
250-000	12	1.75	2.95	1.57	0.40
250-111	10-15	2-1/2	3-7/8	2-1/4	9/16
250-222	13-18	3	4-5/8	2-3/4	5/8
250-333	14-20	3-3/8	5-1/8	3	3/4
250-444	17-48	4	6-1/4	3-5/8	7/8

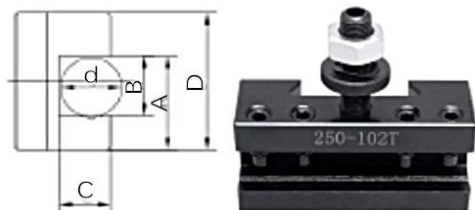
Dreh- und Plandrehhalter



ORDER NO.	A	B	C	D	TOOL BIT RANGE
	INCH	INCH	INCH	INCH	INCH
250-001	0.86	0.5	0.327	1.1	3/16—1/2
250-101	1	1/2	29/64	1—1/2	3/16—1/2
250-201	1—1/8	5/8	1/2	1—3/4	1/4—5/8
250-301	1—7/16	3/4	5/8	2—1/8	1/2—3/4
250-401	1—12/32	1	3/4	2—1/2	1/2—1

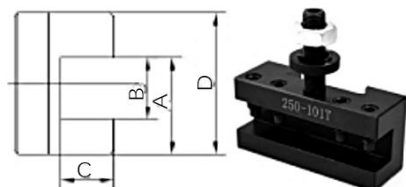
Passend für jede Größe kleiner als max. Höhe h.

Dreh- und Plandrehhalter



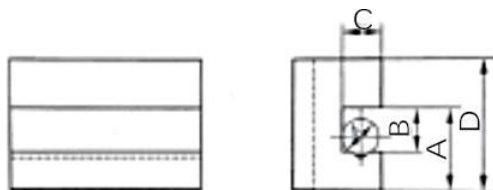
ORDER NO.	A	B	C	D	TOOL BIT RANGE
	INCH	INCH	INCH	INCH	INCH
250-102T	1"	5/8"	1/2"	1-1/2"	3/16-5/8"
250-202T	1-1/8"	3/4"	5/8"	1-3/4"	1/4-3/4"

Dreh- und Plandrehhalter



ORDER NO.	A	B	C	D
	INCH	INCH	INCH	INCH
250-101T	1"	5/8"	1/2"	1-1/2"
250-201T	1-1/8"	3/4"	5/8"	1-3/4"

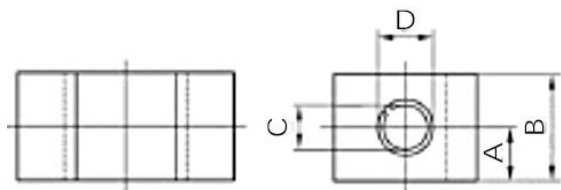
Bohr-, Dreh- und Plandrehhalter



ORDER NO.	A	B	C	D	TOOL BIT RANGE
	INCH	INCH	INCH	INCH	INCH
250-002	0.66	0.5	0.327	1.1	3/16—1/2
250-102	1	1/2	29/64	1—1/2	3/16—1/2
250-202	1—1/8	5/8	1/2	1—3/4	1/4—5/8
250-302	1—7/16	3/4	5/8	2—1/8	1/2—3/4
250-402	1—12/32	1	3/4	2—1/2	1/2—1

V-Nut hält Rundschافتbohrstangen und Werkzeuge als sowie Spezialwerkzeuge zum Bearbeiten von Stirnflächen, Außenflächen, Schneiden, Bohren usw.

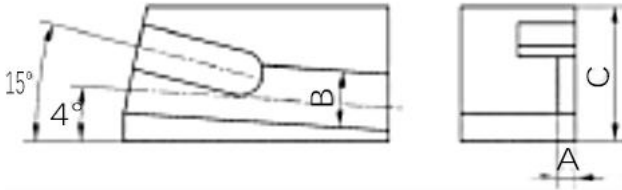
Hochleistungs-Bohrstangenhalter



ORDER NO.	A	B	C	D
	INCH	INCH	INCH	INCH
250-004	0.47	1.18	3/8	1/2
250-104	3/4	1—1/2	5/8	3/4
250-204	7/8	1—3/4	3/4	1
250-304	1	2	3/4	1
250-404	1—1/4	2—1/2	1	1—1/4
250-141	7/8	1—3/4	3/4	1
250-241	1	2	1	1—1/4
250-341	1—1/8	2—1/4	1	1—1/4
250-441	1—3/8	2—3/4	1—1/4	1—1/2

Geteilte Buchse, geeignet für kleine Bohrstangen und Bohrer

Universal-Werkzeughalter für Absteckklingen



ORDER NO.	A	B	C	CLAMPING RANGE	TOOL BIT RANGE
	INCH	INCH	INCH	INCH	INCH
250-010	0.53	1.77	1.18	3/16—1/2	1/2*3/16*3/16
250-110	7/8	1—1/2	1—9/16	3/16—1/2	3/4*3/8*1/4
250-210	1	2—5/8	1—3/4	1/4—5/8	
250-310	1—3/16	3—1/8	2	1/2—3/4	
250-410	1—7/16	3—3/4	2—1/2	1/2—1	

Es kann zum Rändelwerkzeug verwendet werden. Wenn ein Vierkantwerkzeug verwendet wird, kann es die Endfläche, Außenschnitte, Bohrungen usw. bearbeiten.

Lippen: Um Ihr Produkt besser zu schützen, tragen wir Rostschutzöl auf, das zu Öllecks führen kann.

Manufacturer: Shanghaimuxinmuyeyouxiangongsi

Address: Shuangchenglu 803nong11hao1602A-1609shi, baoshanqu, shanghai 200000 CN.

Imported to AUS: SIHAO PTY LTD. 1 ROKEVA STREETEASTWOOD NSW 2122 Australia

Imported to USA: Sanven Technology Ltd. Suite 250, 9166 Anaheim Place, Rancho Cucamonga, CA 91730

EC	REP
-----------	------------

E-CrossStu GmbH
Mainzer Landstr.69, 60329 Frankfurt am Main.

UK	REP
-----------	------------

YH CONSULTING LIMITED.
C/O YH Consulting Limited Office 147, Centurion House,
London Road, Staines-upon-Thames, Surrey, TW18 4AX

VEVOR®

TOUGH TOOLS, HALF PRICE

Tecnico Supporto e certificato di garanzia elettronica

www.vevor.com/support

Set di portautensili a cambio rapido

Manuale d'uso

MODELLO: 250-100(6), 250-200(6), 250-100(8), 250-200(8)

250- 000 (6), 250-1 11 (6), 250- 222 (6),

250-111 (8), 250-222 (8)

Continuiamo a impegnarci per fornirvi strumenti a prezzi competitivi.

"Risparmia la metà", "Metà prezzo" o altre espressioni simili utilizzate solo da noi rappresenta una stima dei risparmi che potresti ottenere acquistando determinati strumenti con noi rispetto ai grandi marchi top e non significa necessariamente copertina tutte le categorie di strumenti da noi offerti. Ti ricordiamo cortesemente di verificare accuratamente

quando effettui un ordine con noi se sei effettivamente Risparmio Metà rispetto ai marchi più importanti.

VEVOR®

TOUGH TOOLS, HALF PRICE

QUICK CHANGE TOOL POST SET

MODELLO: 250-100(6), 250-200(6), 250-100(8), 250-200(8) , 250- 000 (6),
250-1 11 (6), 250- 222 (6), 250- 111 (8), 250- 222 (8)



(L'immagine è solo di riferimento, fare riferimento all'oggetto reale)

NEED HELP? CONTACT US!

Have product questions? Need technical support? Please feel free to contact us:

Technical Support and E-Warranty Certificate
www.vevor.com/support

This is the original instruction, please read all manual instructions carefully before operating. VEVOR reserves a clear interpretation of our user manual. The appearance of the product shall be subject to the product you received. Please forgive us that we won't inform you again if there are any technology or software updates on our product.

QUICK CHANGE TOOL POST

Caratteristiche:

- Tutte le parti funzionanti sono temprate e rettificate.
- Massima rigidità per prestazioni senza vibrazioni. Niente perdite di tempo con i distanziali.
- Aumenta la produttività di tutte le operazioni di tornitura.
- Completamente sigillato per un funzionamento senza necessità di manutenzione.
- Cambia utensile in pochi secondi.



◆ SET DI PORTAUTENSILI TIPO PISTONE

ORDINE NO.	TORNIO ORIENTABILE	6 PEZZI OGNI SET INCLUDE (6 PEZZI/SET)
250-100 (6)	12"	250-100, 250-101, 250-102, 250-104, 250-107, 250-110 CIASCUNO 1PZ
250-200 (6)	10"-15"	250-200, 250-201, 250-202, 250-204, 250-207, 250-210 CIASCUNO 1PZ
250-300 (6)	13"-18"	250-300, 250-301, 250-302, 250-304, 250-307, 250-310 CIASCUNO 1PZ
250-400 (6)	14"-20"	250-400, 250-401, 250-402, 250-404, 250-407, 250-410 CIASCUNO 1PZ

ORDINE NO.	TORNIO ORIENTABILE	8 PEZZI OGNI SET INCLUDE (8 PEZZI/SET)
250-100 (8)	12"	250-100, 250-101, 250-102, 250-104, 250-107, 250-110 CIASCUNO 1PZ 250-101T*2 PZ
250-200 (8)	10"-15"	250-200, 250-201, 250-202, 250-204, 250-207, 250-210 CIASCUNO 1PZ 250-201T*2 PZ



SET DI PORTAUTENSILI A CUNEO

Ogni set è composto da un portautensili a pistone e da uno per ciascuno dei 5 supporti

ORDINE NO.	TORNIO ORIENTABILE	6 PEZZI OGNI SET INCLUDE (6 PEZZI/SET)
250-000 (6)	8 "	250-000, 250-001, 250-002, 250-004, 250-007, 250-010 CIASCUNO 1PZ
250-111 (6)	12 "	250-111, 250-101, 250-102, 250-104, 250-107, 250-110 CIASCUNO 1PZ
250-222 (6)	10 " -15 "	250-222, 250-201, 250-202, 250-204, 250-207, 250-210 CIASCUNO 1PZ
250-333 (6)	13 " -18 "	250-333, 250-301, 250-302, 250-304, 250-307, 250-310 CIASCUNO 1PZ
250-444 (6)	14 " -20 "	250-444, 250-401, 250-402, 250-404, 250-407, 250-410 CIASCUNO 1PZ

ORDINE NO.	TORNIO ORIENTABILE	8 PEZZI OGNI SET INCLUDE (8 PEZZI/SET)
250-111 (8)	12 "	250-111, 250-101, 250-102, 250-104, 250-107, 250-110 CIASCUNO 1PZ 250-101T * 2 PZ
250-222 (8)	10 " -15 "	250-222, 250-201, 250-202, 250-204, 250-207, 250-210 CIASCUNO 1PZ 250-201T * 2 PZ

Portautensili a cambio rapido con pistone - accessori



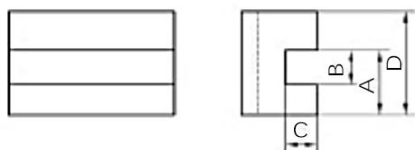
ORDER NO.	SWING FOR LATHE	A	B	C	D
	INCH	INCH	INCH	INCH	INCH
250-100	12	2- 1/2	3-7/8	2 -1/4	9/16
250-200	10-15	3	4 - 5/8	2 - 3/4	5/8
250-300	13-18	3 - 3/8	5 -1/8	3	3/4
250-400	14-20	4	6 -1/4	3 5/8	7/8

Portautensili a cambio rapido stile cono



ORDER NO.	SWING FOR LATHE	A	B	C	D
	INCH	INCH	INCH	INCH	INCH
250-000	12	1.75	2.95	1.57	0.40
250-111	10-15	2-1/2	3-7/8	2-1/4	9/16
250-222	13-18	3	4-5/8	2-3/4	5/8
250-333	14-20	3-3/8	5-1/8	3	3/4
250-444	17-48	4	6-1/4	3-5/8	7/8

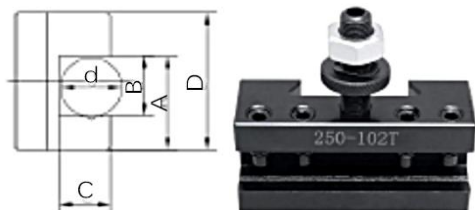
Supporto per tornitura e sfacciatura



ORDER NO.	A	B	C	D	TOOL BIT RANGE
	INCH	INCH	INCH	INCH	INCH
250-001	0.86	0.5	0.327	1.1	3/16—1/2
250-101	1	1/2	29/64	1—1/2	3/16—1/2
250-201	1—1/8	5/8	1/2	1—3/4	1/4—5/8
250-301	1—7/16	3/4	5/8	2—1/8	1/2—3/4
250-401	1—12/32	1	3/4	2—1/2	1/2—1

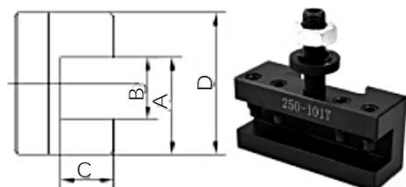
Adatto a qualsiasi dimensione inferiore all'altezza massima h.

Supporto per tornitura e sfacciatura



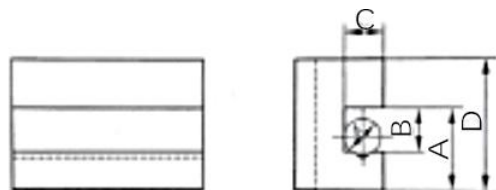
ORDER NO.	A	B	C	D	TOOL BIT RANGE
	INCH	INCH	INCH	INCH	INCH
250-102T	1"	5/8"	1/2"	1-1/2"	3/16-5/8"
250-202T	1-1/8"	3/4"	5/8"	1-3/4"	1/4-3/4"

Supporto per tornitura e sfacciatura



ORDER NO.	A	B	C	D
	INCH	INCH	INCH	INCH
250-101T	1"	5/8"	1/2"	1-1/2"
250-201T	1-1/8"	3/4"	5/8"	1-3/4"

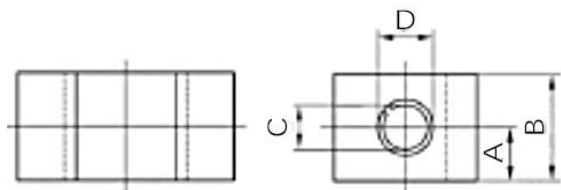
Supporto per alesatura, tornitura e sfacciatura



ORDER NO.	A	B	C	D	TOOL BIT RANGE
	INCH	INCH	INCH	INCH	INCH
250-002	0.66	0.5	0.327	1.1	3/16—1/2
250-102	1	1/2	29/64	1—1/2	3/16—1/2
250-202	1—1/8	5/8	1/2	1—3/4	1/4—5/8
250-302	1—7/16	3/4	5/8	2—1/8	1/2—3/4
250-402	1—12/32	1	3/4	2—1/2	1/2—1

Le barre di alesatura e gli utensili con gambo tondo sono dotati di scanalature a V così come punte per utensili Sauere per lavorazioni di superfici terminali, esterne, di taglio, di alesatura ecc.

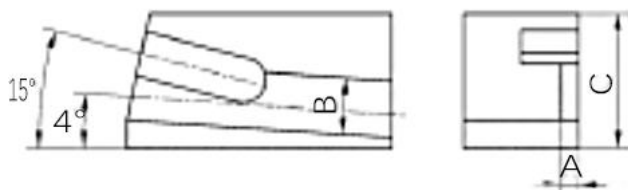
Supporto per barra alesatrice per impieghi gravosi



ORDER NO.	A	B	C	D
	INCH	INCH	INCH	INCH
250-004	0.47	1.18	3/8	1/2
250-104	3/4	1—1/2	5/8	3/4
250-204	7/8	1—3/4	3/4	1
250-304	1	2	3/4	1
250-404	1—1/4	2—1/2	1	1—1/4
250-141	7/8	1—3/4	3/4	1
250-241	1	2	1	1—1/4
250-341	1—1/8	2—1/4	1	1—1/4
250-441	1—3/8	2—3/4	1—1/4	1—1/2

Boccola divisa adatta per piccole barre di alesatura e trapano

Portautensili universale per lame di troncatura



ORDER NO.	A	B	C	CLAMPING RANGE	TOOL BIT RANGE
	INCH	INCH	INCH	INCH	INCH
250-010	0.53	1.77	1.18	3/16—1/2	1/2*3/16*3/16
250-110	7/8	1—1/2	1—9/16	3/16—1/2	3/4*3/8*1/4
250-210	1	2—5/8	1—3/4	1/4—5/8	
250-310	1—3/16	3—1/8	2	1/2—3/4	
250-410	1—7/16	3—3/4	2—1/2	1/2—1	

Può essere utilizzato per la zigrinatura; se si utilizza un utensile quadrato, può lavorare superfici terminali, tagli esterni, alesature, ecc.

Labbra: per proteggere meglio il tuo prodotto, applicheremo un olio antiruggine, che potrebbe causare perdite di olio.

Manufacturer: Shanghaimuxinmuyeyouxiangongsi

Address: Shuangchenglu 803nong11hao1602A-1609shi, baoshanqu, shanghai 200000 CN.

Imported to AUS: SIHAO PTY LTD. 1 ROKEVA STREETEASTWOOD NSW 2122 Australia

Imported to USA: Sanven Technology Ltd. Suite 250, 9166 Anaheim Place, Rancho Cucamonga, CA 91730

EC	REP
-----------	------------

E-CrossStu GmbH
Mainzer Landstr.69, 60329 Frankfurt am Main.

UK	REP
-----------	------------

YH CONSULTING LIMITED.
C/O YH Consulting Limited Office 147, Centurion House,
London Road, Staines-upon-Thames, Surrey, TW18 4AX

VEVOR[®]

TOUGH TOOLS, HALF PRICE

Técnico Certificado de soporte y garantía electrónica

www.vevor.com/support

Juego de portaherramientas de cambio rápido Manual de usuario

MÓDULO: 250-100(6), 250-200(6), 250-100(8), 250-200(8)

250-000 (6), 250-1 11 (6), 250-222 (6),

250-111 (8), 250-222 (8)

Seguimos comprometidos a brindarle herramientas a precios competitivos.
"Ahorra la mitad", "mitad de precio" o cualquier otra expresión similar utilizada únicamente
por nosotros

Representa una estimación de los ahorros que podría obtener al comprar ciertas
herramientas.

con nosotros en comparación con las principales marcas líderes y no significa
necesariamente cubrir

Todas las categorías de herramientas que ofrecemos. Le recordamos que debe verificar
con cuidado

Cuando realiza un pedido con nosotros, si realmente está Ahorro
Medio en comparación con las principales marcas líderes.

VEVOR[®]
TOUGH TOOLS, HALF PRICE

**QUICK CHANGE
TOOL POST SET**

MODELO: 250-100(6), 250-200(6), 250-100(8), 250-200(8) , 250- 000 (6),
250-1 11 (6), 250- 222 (6), 250- 111 (8), 250- 222 (8)



(La imagen es solo de referencia, consulte el objeto real)

NEED HELP? CONTACT US!

Have product questions? Need technical support? Please feel free to contact us:

Technical Support and E-Warranty Certificate
www.vevor.com/support

This is the original instruction, please read all manual instructions carefully before operating. VEVOR reserves a clear interpretation of our user manual. The appearance of the product shall be subject to the product you received. Please forgive us that we won't inform you again if there are any technology or software updates on our product.

QUICK CHANGE TOOL POST

Características:

- Todas las piezas de trabajo endurecidas y rectificadas.
- Máxima rigidez para un rendimiento sin vibraciones. No se pierde tiempo con calzas.
- Aumenta la productividad de todas las operaciones del torno.
- Completamente sellado para un funcionamiento sin necesidad de mantenimiento.
- Cambio de herramientas en segundos.



◆ JUEGOS DE POSTES PARA HERRAMIENTAS TIPO PISTÓN

ORDEN NO.	TORNO OSCILANTE	6 PIEZAS CADA JUEGO INCLUYE (6 PIEZAS/JUEGO)
250-100 (6)	12"	250-100, 250-101, 250-102, 250-104, 250-107, 250-110 CADA UNO 1 ud.
250-200 (6)	10"-15"	250-200, 250-201, 250-202, 250-204, 250-207, 250-210 CADA UNO 1 ud.
250-300 (6)	13"-18"	250-300, 250-301, 250-302, 250-304, 250-307, 250-310 CADA UNO 1 ud.
250-400 (6)	14"-20"	250-400, 250-401, 250-402, 250-404, 250-407, 250-410 CADA UNO 1 PIEZA

ORDEN NO.	TORNO OSCILANTE	8 PIEZAS CADA JUEGO INCLUYE (8 PIEZAS/JUEGO)
250-100 (8)	12"	250-100, 250-101, 250-102, 250-104, 250-107, 250-110 CADA UNO 1 PIEZA 250-101T*2 PIEZAS
250-200 (8)	10"-15"	250-200, 250-201, 250-202, 250-204, 250-207, 250-210 CADA UNO 1 PIEZA 250-201T*2 PIEZAS



JUEGOS DE POSTES PARA HERRAMIENTAS TIPO CUÑA

Cada juego consta de un poste de herramientas tipo pison y uno de cada uno de los 5 soportes.

ORDEN NO.	TORNO OSCILANTE	6 PIEZAS CADA JUEGO INCLUYE (6 PIEZAS/JUEGO)
250-000 (6)	8 "	250-000, 250-001, 250-002, 250-004, 250-007, 250-010 CADA UNO 1 ud.
250-111 (6)	12 "	250-111, 250-101, 250-102, 250-104, 250-107, 250-110 CADA UNO 1 PIEZA
250-222 (6)	10 " -15 "	250-222, 250-201, 250-202, 250-204, 250-207, 250-210 CADA UNO 1 ud.
250-333 (6)	13 " -18 "	250-333, 250-301, 250-302, 250-304, 250-307, 250-310 CADA UNO 1 PIEZA
250-444 (6)	14 " -20 "	250-444, 250-401, 250-402, 250-404, 250-407, 250-410 CADA UNO 1 PIEZA

ORDEN NO.	TORNO OSCILANTE	8 PIEZAS CADA JUEGO INCLUYE (8 PIEZAS/JUEGO)
-----------	-----------------	--

250-111(8)	12 "	250-111, 250-101, 250-102, 250-104, 250-107, 250-110 CADA UNO 1 PIEZA 250-101T * 2 piezas
250-222(8)	10 " -15 "	250-222, 250-201, 250-202, 250-204, 250-207, 250-210 CADA UNO 1 ud. 250-201T * 2 piezas

Accesorios tipo pistón para portaherramientas de cambio rápido



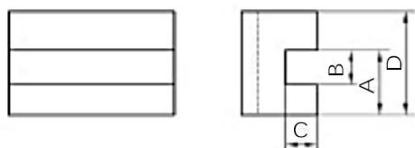
ORDER NO.	SWING FOR LATHE	A	B	C	D
	INCH	INCH	INCH	INCH	INCH
250-100	12	2- 1/2	3-7/8	2 -1/4	9/16
250-200	10-15	3	4 - 5/8	2 - 3/4	5/8
250-300	13-18	3 - 3/8	5 - 1/8	3	3/4
250-400	14-20	4	6 -1/4	3 5/8	7/8

Poste de herramienta de cambio rápido estilo cuña



ORDER NO.	SWING FOR LATHE	A	B	C	D
	INCH	INCH	INCH	INCH	INCH
250-000	12	1.75	2.95	1.57	0.40
250-111	10-15	2-1/2	3-7/8	2-1/4	9/16
250-222	13-18	3	4-5/8	2-3/4	5/8
250-333	14-20	3-3/8	5-1/8	3	3/4
250-444	17-48	4	6-1/4	3-5/8	7/8

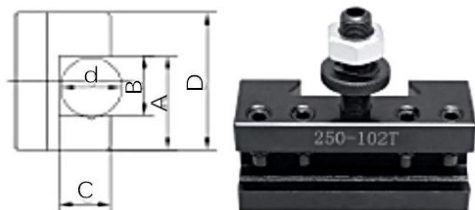
Soporte para torneado y refrentado



ORDER NO.	A	B	C	D	TOOL BIT RANGE
	INCH	INCH	INCH	INCH	INCH
250-001	0.86	0.5	0.327	1.1	3/16—1/2
250-101	1	1/2	29/64	1—1/2	3/16—1/2
250-201	1—1/8	5/8	1/2	1—3/4	1/4—5/8
250-301	1—7/16	3/4	5/8	2—1/8	1/2—3/4
250-401	1—12/32	1	3/4	2—1/2	1/2—1

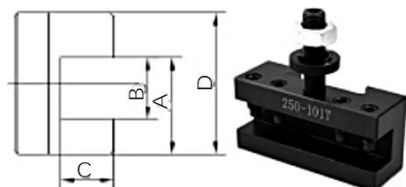
Adecuado para cualquier tamaño más pequeño que la altura máxima h.

Soporte para torneado y refrentado



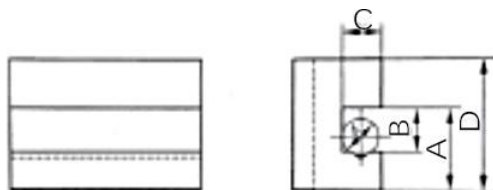
ORDER NO.	A	B	C	D	TOOL BIT RANGE
	INCH	INCH	INCH	INCH	INCH
250-102T	1"	5/8"	1/2"	1-1/2"	3/16-5/8"
250-202T	1-1/8"	3/4"	5/8"	1-3/4"	1/4-3/4"

Soporte para torneado y refrentado



ORDER NO.	A	B	C	D
	INCH	INCH	INCH	INCH
250-101T	1"	5/8"	1/2"	1-1/2"
250-201T	1-1/8"	3/4"	5/8"	1-3/4"

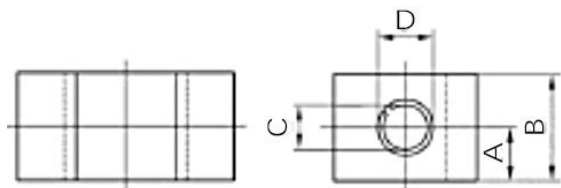
Portaherramientas para taladrar, torner y refrentar



ORDER NO.	A	B	C	D	TOOL BIT RANGE
	INCH	INCH	INCH	INCH	INCH
250-002	0.66	0.5	0.327	1.1	3/16—1/2
250-102	1	1/2	29/64	1—1/2	3/16—1/2
250-202	1—1/8	5/8	1/2	1—3/4	1/4—5/8
250-302	1—7/16	3/4	5/8	2—1/8	1/2—3/4
250-402	1—12/32	1	3/4	2—1/2	1/2—1

Barras de mandrinar y herramientas de vástago redondo con ranura en V
 Así como brocas para herramientas Sauare para mecanizar caras finales,
 externas, de corte, taladrado, etc.

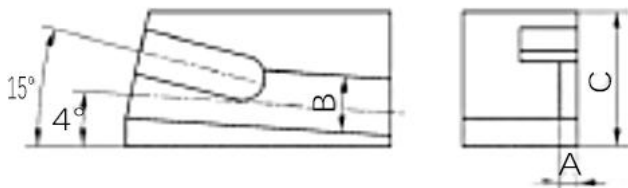
Soporte de barra de mandrilar de alta resistencia



ORDER NO.	A	B	C	D
	INCH	INCH	INCH	INCH
250-004	0.47	1.18	3/8	1/2
250-104	3/4	1—1/2	5/8	3/4
250-204	7/8	1—3/4	3/4	1
250-304	1	2	3/4	1
250-404	1—1/4	2—1/2	1	1—1/4
250-141	7/8	1—3/4	3/4	1
250-241	1	2	1	1—1/4
250-341	1—1/8	2—1/4	1	1—1/4
250-441	1—3/8	2—3/4	1—1/4	1—1/2

Casquillo partido adecuado para barras de mandrilar y taladros pequeños

Portaherramientas universal para cuchillas de tronzado



ORDER NO.	A	B	C	CLAMPING RANGE	TOOL BIT RANGE
	INCH	INCH	INCH	INCH	INCH
250-010	0.53	1.77	1.18	3/16—1/2	1/2*3/16*3/16
250-110	7/8	1—1/2	1—9/16	3/16—1/2	3/4*3/8*1/4
250-210	1	2—5/8	1—3/4	1/4—5/8	
250-310	1—3/16	3—1/8	2	1/2—3/4	
250-410	1—7/16	3—3/4	2—1/2	1/2—1	

Se puede utilizar para moletear, si se utiliza una herramienta cuadrada, puede procesar caras finales, cortes externos, mandrilado, etc.

Labios: Para brindar una mejor protección a su producto, aplicaremos aceite antioxidante, que puede provocar fugas de aceite.

Manufacturer: Shanghaimuxinmuyeyouxiangongsi

Address: Shuangchenglu 803nong11hao1602A-1609shi, baoshanqu, shanghai 200000 CN.

Imported to AUS: SIHAO PTY LTD. 1 ROKEVA STREETEASTWOOD NSW 2122 Australia

Imported to USA: Sanven Technology Ltd. Suite 250, 9166 Anaheim Place, Rancho Cucamonga, CA 91730

EC	REP
-----------	------------

E-CrossStu GmbH
Mainzer Landstr.69, 60329 Frankfurt am Main.

UK	REP
-----------	------------

YH CONSULTING LIMITED.
C/O YH Consulting Limited Office 147, Centurion House,
London Road, Staines-upon-Thames, Surrey, TW18 4AX

VEVOR®

TOUGH TOOLS, HALF PRICE

Techniczny Wsparcie i certyfikat e-gwarancji

www.vevor.com/support

Zestaw narzędzi do szybkiej wymiany Instrukcja obsługi

MODUŁ: 250-100(6), 250-200(6), 250-100(8), 250-200(8)

250- 000 (6), 250-1 11 (6), 250- 222 (6),

250- 111 (8), 250- 222 (8)

Nadal staramy się oferować Państwu narzędzia w konkurencyjnych cenach. „Oszczędź połowę”, „Połowa ceny” lub jakiegokolwiek inne podobne wyrażenia używane wyłącznie przez nas przedstawia szacunkowe oszczędności, jakie możesz uzyskać kupując określone narzędzia z nami w porównaniu do głównych, najlepszych marek i niekoniecznie oznacza to okładka wszystkie kategorie narzędzi oferowanych przez nas. Przypominamy o sprawdzeniu ostrożnie gdy składasz u nas zamówienie, jeśli faktycznie Oszczędność Połowa w porównaniu z wiodącymi markami.

VEVOR[®]
TOUGH TOOLS, HALF PRICE

**QUICK CHANGE
TOOL POST SET**

MODELE: 250-100(6), 250-200(6), 250-100(8), 250-200(8) , 250- 000 (6),
250-1 11 (6), 250- 222 (6), 250- 111 (8), 250- 222 (8)



(Zdjęcie ma charakter poglądowy, proszę odnosić się do rzeczywistego obiektu)

NEED HELP? CONTACT US!

Have product questions? Need technical support? Please feel free to contact us:

Technical Support and E-Warranty Certificate
www.vevor.com/support

This is the original instruction, please read all manual instructions carefully before operating. VEVOR reserves a clear interpretation of our user manual. The appearance of the product shall be subject to the product you received. Please forgive us that we won't inform you again if there are any technology or software updates on our product.

QUICK CHANGE TOOL POST

Cechy:

- Wszystkie części robocze hartowane i szlifowane.
- Maksymalna sztywność dla pracy bez drgań. Żadnego marnowania czasu na podkładki.
- Zwiększa wydajność wszystkich operacji tokarskich.
- Całkowicie uszczelnione, nie wymaga konserwacji.
- Zmiana narzędzi w ciągu kilku sekund.



◆ ZESTAWY NARZĘDZI TYPU TŁOKOWEGO

ZAMÓWIENIE NIE.	HUŚTAWKA TOKARKI	6 SZTUK W KAŻDYM ZESTAWIE ZAWIERA (6 SZT./ZESTAW)
250-100 (6)	12"	250-100, 250-101, 250-102, 250-104, 250-107, 250-110 KAŻDY 1 SZT.
250-200 (6)	10"-15"	250-200, 250-201, 250-202, 250-204, 250-207, 250-210 KAŻDY 1 SZT.
250-300 (6)	13"-18"	250-300, 250-301, 250-302, 250-304, 250-307, 250-310 KAŻDY 1 SZT.
250-400 (6)	14"-20"	250-400, 250-401, 250-402, 250-404, 250-407, 250-410 KAŻDY 1 SZT.

ZAMÓWIENIE	TOKARKA HUŚTAWKOWA	KAŻDY ZESTAW ZAWIERA 8 ELEMENTÓW (8 SZT./ZESTAW)
------------	--------------------	--

NIE.		
250-100 (8)	12"	250-100, 250-101, 250-102, 250-104, 250-107, 250-110 KAŻDY 1 SZT. 250-101T*2 SZT.
250-200 (8)	10"-15"	250-200, 250-201, 250-202, 250-204, 250-207, 250-210 KAŻDY 1 SZT. 250-201T*2 SZT.



ZESTAWY NARZĘDZI TYPU KLIN

Każdy zestaw składa się z jednego uchwyty narzędziowego typu pion oraz po jednym z 5 uchwyty

ZAMÓWIENIE NIE.	TOKARKA HUŚTAWKOWA A	6 SZTUK W KAŻDYM ZESTAWIE ZAWIERA (6 SZT./ZESTAW)
250-000 (6)	8 "	250-000, 250-001, 250-002, 250-004, 250-007, 250-010 KAŻDY 1 SZT.
250-111 (6)	12 "	250-111, 250-101, 250-102, 250-104, 250-107, 250-110 KAŻDY 1 SZT.
250-222 (6)	10 " -15 "	250-222, 250-201, 250-202, 250-204, 250-207, 250-210 KAŻDY 1 SZT.
250-333 (6)	13 " -18 "	250-333, 250-301, 250-302, 250-304, 250-307, 250-310 KAŻDY 1 SZT.
250-444 (6)	14 " -20 "	250-444, 250-401, 250-402, 250-404, 250-407, 250-410 KAŻDY 1 SZT.

ZAMÓWIENIE NIE.	TOKARKA HUŚTAWKOWA A	KAŻDY ZESTAW ZAWIERA 8 ELEMENTÓW (8 SZT./ZESTAW)
250-111 (8)	12 "	250-111, 250-101, 250-102, 250-104, 250-107, 250-110 KAŻDY 1 SZT. 250-101T * 2 SZT.
250-222 (8)	10 " -15 "	250-222, 250-201, 250-202, 250-204, 250-207, 250-210 KAŻDY 1 SZT. 250-201T * 2 SZT.

Szybka wymiana narzędzia Post Piston Style-akcesoria



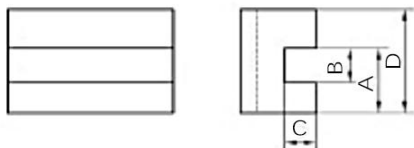
ORDER NO.	SWING FOR LATHE	A	B	C	D
	INCH	INCH	INCH	INCH	INCH
250-100	12	2- 1/2	3-7/8	2-1/4	9/16
250-200	10-15	3	4 - 5/8	2 - 3/4	5/8
250-300	13-18	3 - 3/8	5 - 1/8	3	3/4
250-400	14-20	4	6 - 1/4	3 5/8	7/8

Szybka wymiana narzędzia w stylu klina



ORDER NO.	SWING FOR LATHE	A	B	C	D
	INCH	INCH	INCH	INCH	INCH
250-000	12	1.75	2.95	1.57	0.40
250-111	10-15	2-1/2	3-7/8	2-1/4	9/16
250-222	13-18	3	4-5/8	2-3/4	5/8
250-333	14-20	3-3/8	5-1/8	3	3/4
250-444	17-48	4	6-1/4	3-5/8	7/8

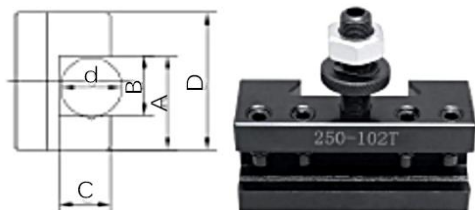
Uchwyt obrotowy i czołowy



ORDER NO.	A	B	C	D	TOOL BIT RANGE
	INCH	INCH	INCH	INCH	INCH
250-001	0.86	0.5	0.327	1.1	3/16—1/2
250-101	1	1/2	29/64	1—1/2	3/16—1/2
250-201	1—1/8	5/8	1/2	1—3/4	1/4—5/8
250-301	1—7/16	3/4	5/8	2—1/8	1/2—3/4
250-401	1—12/32	1	3/4	2—1/2	1/2—1

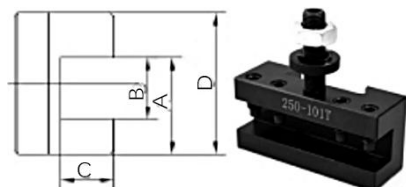
Pasuje do każdego rozmiaru mniejszego niż maks. wysokość h.

Uchwyt obrotowy i czołowy



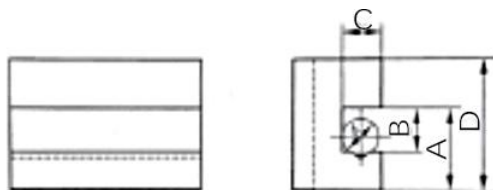
ORDER NO.	A	B	C	D	TOOL BIT RANGE
	INCH	INCH	INCH	INCH	INCH
250-102T	1"	5/8"	1/2"	1-1/2"	3/16-5/8"
250-202T	1-1/8"	3/4"	5/8"	1-3/4"	1/4-3/4"

Uchwyt obrotowy i czołowy



ORDER NO.	A	B	C	D
	INCH	INCH	INCH	INCH
250-101T	1"	5/8"	1/2"	1-1/2"
250-201T	1-1/8"	3/4"	5/8"	1-3/4"

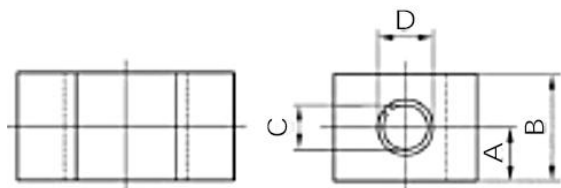
Uchwyt do rozwiercania, toczenia i planowania



ORDER NO.	A	B	C	D	TOOL BIT RANGE
	INCH	INCH	INCH	INCH	INCH
250-002	0.66	0.5	0.327	1.1	3/16—1/2
250-102	1	1/2	29/64	1—1/2	3/16—1/2
250-202	1—1/8	5/8	1/2	1—3/4	1/4—5/8
250-302	1—7/16	3/4	5/8	2—1/8	1/2—3/4
250-402	1—12/32	1	3/4	2—1/2	1/2—1

Rowek V utrzymuje okrągłe trzpienie wytaczaków i narzędzi, jak również narzędzia do obróbki powierzchni czołowej, zewnętrznej, skrawania, rozwierania itp.

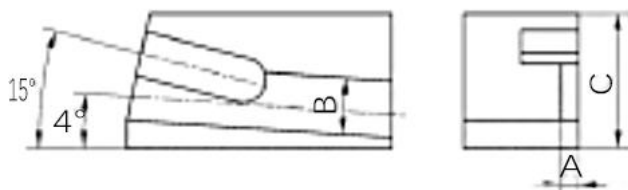
Uchwyt na wytaczadło o dużej wytrzymałości



ORDER NO.	A	B	C	D
	INCH	INCH	INCH	INCH
250-004	0.47	1.18	3/8	1/2
250-104	3/4	1—1/2	5/8	3/4
250-204	7/8	1—3/4	3/4	1
250-304	1	2	3/4	1
250-404	1—1/4	2—1/2	1	1—1/4
250-141	7/8	1—3/4	3/4	1
250-241	1	2	1	1—1/4
250-341	1—1/8	2—1/4	1	1—1/4
250-441	1—3/8	2—3/4	1—1/4	1—1/2

Tuleja dzielona odpowiednia do małych wytaczaków i wiertel

Uniwersalny uchwyt na ostrze do rozdzielania



ORDER NO.	A	B	C	CLAMPING RANGE	TOOL BIT RANGE
	INCH	INCH	INCH	INCH	INCH
250-010	0.53	1.77	1.18	3/16—1/2	1/2*3/16*3/16
250-110	7/8	1—1/2	1—9/16	3/16—1/2	3/4*3/8*1/4
250-210	1	2—5/8	1—3/4	1/4—5/8	
250-310	1—3/16	3—1/8	2	1/2—3/4	
250-410	1—7/16	3—3/4	2—1/2	1/2—1	

Może być stosowany do radełkowania; jeżeli używane jest narzędzie kwadratowe, może obrabiać powierzchnię czołową, cięcie zewnętrzne, rozwiercanie itp.

Wargi: Aby zapewnić lepszą ochronę Twojego produktu, zastosujemy olej antykorozyjny, który może powodować wyciek oleju.

Manufacturer: Shanghaimuxinmuyeyouxiangongsi

Address: Shuangchenglu 803nong11hao1602A-1609shi, baoshanqu, shanghai 200000 CN.

Imported to AUS: SIHAO PTY LTD. 1 ROKEVA STREETEASTWOOD NSW 2122 Australia

Imported to USA: Sanven Technology Ltd. Suite 250, 9166 Anaheim Place, Rancho Cucamonga, CA 91730

EC	REP
-----------	------------

E-CrossStu GmbH
Mainzer Landstr.69, 60329 Frankfurt am Main.

UK	REP
-----------	------------

YH CONSULTING LIMITED.
C/O YH Consulting Limited Office 147, Centurion House,
London Road, Staines-upon-Thames, Surrey, TW18 4AX

VEVOR®

TOUGH TOOLS, HALF PRICE

Technisch Ondersteuning en E-garantiecertificaat

www.vevor.com/support

Snelwissel gereedschapshouderset Gebruiksaanwijzing

MODLE: 250-100(6), 250-200(6), 250-100(8), 250-200(8)

250- 000 (6), 250-1 11 (6), 250- 222 (6),

250- 111 (8), 250- 222 (8)

Wij streven er voortdurend naar om u gereedschappen tegen concurrerende prijzen te leveren.

"Bespaar de helft", "halve prijs" of andere soortgelijke uitdrukkingen die alleen door ons worden gebruikt

geeft een schatting van de besparingen die u kunt behalen door bepaalde gereedschappen te kopen

bij ons vergeleken met de grote topmerken en betekent niet per se dat omslag alle categorieën van tools die wij aanbieden. U wordt vriendelijk verzocht om te verifiëren voorzichtig

wanneer u een bestelling bij ons plaatst, als u daadwerkelijk Besparing Half in vergelijking met de grote topmerken.

VEVOR[®]
TOUGH TOOLS, HALF PRICE

**QUICK CHANGE
TOOL POST SET**

MODEL: 250-100(6), 250-200(6), 250-100(8), 250-200(8) , 250-000 (6),
250-1 11 (6), 250-222 (6), 250-111 (8), 250-222 (8)



(De afbeelding is alleen ter referentie, kijk naar het daadwerkelijke object)

NEED HELP? CONTACT US!

Have product questions? Need technical support? Please feel free to contact us:

Technical Support and E-Warranty Certificate
www.vevor.com/support

This is the original instruction, please read all manual instructions carefully before operating. VEVOR reserves a clear interpretation of our user manual. The appearance of the product shall be subject to the product you received. Please forgive us that we won't inform you again if there are any technology or software updates on our product.

QUICK CHANGE TOOL POST

Funcies:

- Alle werkende delen gehard en geslepen.
- Maximale stijfheid voor trillingsvrije prestaties. Geen tijdverspilling met shims.
- Verhoogt de productiviteit van alle draaibewerkingen.
- Volledig afgedicht voor onderhoudsvrije werking.
- Wissel van gereedschap in enkele seconden.



◆ ZUIGERTYPE GEREEDSCHAPSPAALSETS

VOLGORDE NEE.	DRAAIBANK SWING	6 STUKS ELKE SET BEVAT (6 STUKS/SET)
250-100 (6)	12"	250-100, 250-101, 250-102, 250-104, 250-107, 250-110 ELK 1PC
250-200 (6)	10"-15"	250-200, 250-201, 250-202, 250-204, 250-207, 250-210 ELK 1 STUK
250-300 (6)	13"-18"	250-300, 250-301, 250-302, 250-304, 250-307, 250-310 ELK 1 STUK
250-400 (6)	14"-20"	250-400, 250-401, 250-402, 250-404, 250-407, 250-410 ELK 1 STUK

VOLGORDE NEE.	DRAAIBANK SWING	8 STUKS ELKE SET BEVAT (8 STUKS/SET)
250-100 (8)	12"	250-100, 250-101, 250-102, 250-104, 250-107, 250-110 ELK 1 STUK 250-101T*2 STUKS

250-200 (8)	10"-15"	250-200, 250-201, 250-202, 250-204, 250-207, 250-210 ELK 1 STUK 250-201T*2 STUKS
-------------	---------	---



WIGTYPE GEREEDSCHAPSPAALSETS

Elke set bestaat uit één piontype gereedschapshouder en één van elk van de 5 houders

VOLGORDE NEE.	DRAAIBANK SWING	6 STUKS ELKE SET BEVAT (6 STUKS/SET)
250-000 (6)	8 "	250-000, 250-001, 250-002, 250-004, 250-007, 250-010 ELK 1 STUK
250-111 (6)	12 "	250-111, 250-101, 250-102, 250-104, 250-107, 250-110 ELK 1 STUK
250-222 (6)	10 " -15 "	250-222, 250-201, 250-202, 250-204, 250-207, 250-210 ELK 1 STUK
250-333 (6)	13 " -18 "	250-333, 250-301, 250-302, 250-304, 250-307, 250-310 ELK 1 STUK
250-444 (6)	14 " -20 "	250-444, 250-401, 250-402, 250-404, 250-407, 250-410 ELK 1 STUK

VOLGORDE NEE.	DRAAIBANK SWING	8 STUKS ELKE SET BEVAT (8 STUKS/SET)
250-111 (8)	12 "	250-111, 250-101, 250-102, 250-104, 250-107, 250-110 ELK 1 STUK 250-101T * 2 STUKS
250-222 (8)	10 " -15 "	250-222, 250-201, 250-202, 250-204, 250-207, 250-210 ELK 1 STUK 250-201T * 2 STUKS

Snelwisselgereedschapshouder Zuigerstijl-accessoires



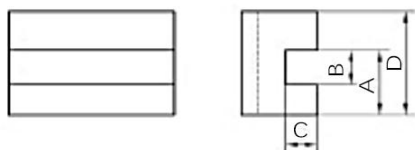
ORDER NO.	SWING FOR LATHE	A	B	C	D
	INCH	INCH	INCH	INCH	INCH
250-100	12	2- 1/2	3-7/8	2 -1/4	9/16
250-200	10-15	3	4 - 5/8	2 - 3/4	5/8
250-300	13-18	3 - 3/8	5 - 1/8	3	3/4
250-400	14-20	4	6 -1/4	3 5/8	7/8

Snelwisselgereedschapshouder wigvormig



ORDER NO.	SWING FOR LATHE	A	B	C	D
	INCH	INCH	INCH	INCH	INCH
250-000	12	1.75	2.95	1.57	0.40
250-111	10-15	2-1/2	3-7/8	2-1/4	9/16
250-222	13-18	3	4-5/8	2-3/4	5/8
250-333	14-20	3-3/8	5-1/8	3	3/4
250-444	17-48	4	6-1/4	3-5/8	7/8

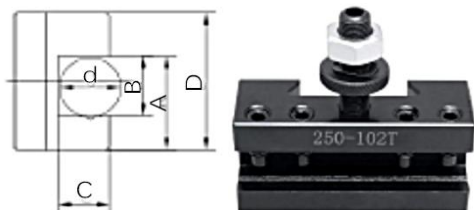
Draai- en keerhouder



ORDER NO.	A	B	C	D	TOOL BIT RANGE
	INCH	INCH	INCH	INCH	INCH
250-001	0.86	0.5	0.327	1.1	3/16—1/2
250-101	1	1/2	29/64	1—1/2	3/16—1/2
250-201	1—1/8	5/8	1/2	1—3/4	1/4—5/8
250-301	1—7/16	3/4	5/8	2—1/8	1/2—3/4
250-401	1—12/32	1	3/4	2—1/2	1/2—1

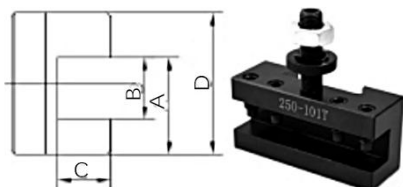
Geschikt voor elke maat kleiner dan max. Hoogte h.

Draai- en keerhouder



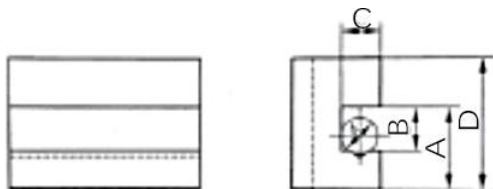
ORDER NO.	A	B	C	D	TOOL BIT RANGE
	INCH	INCH	INCH	INCH	INCH
250-102T	1"	5/8"	1/2"	1-1/2"	3/16-5/8"
250-202T	1-1/8"	3/4"	5/8"	1-3/4"	1/4-3/4"

Draai- en keerhouder



ORDER NO.	A	B	C	D
	INCH	INCH	INCH	INCH
250-101T	1"	5/8"	1/2"	1-1/2"
250-201T	1-1/8"	3/4"	5/8"	1-3/4"

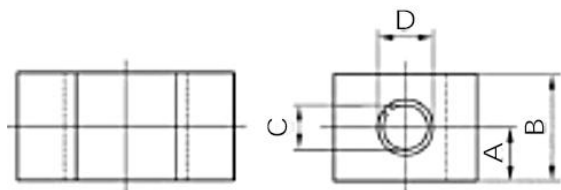
Saai-, draai- en vlakhouder



ORDER NO.	A	B	C	D	TOOL BIT RANGE
	INCH	INCH	INCH	INCH	INCH
250-002	0.66	0.5	0.327	1.1	3/16—1/2
250-102	1	1/2	29/64	1—1/2	3/16—1/2
250-202	1—1/8	5/8	1/2	1—3/4	1/4—5/8
250-302	1—7/16	3/4	5/8	2—1/8	1/2—3/4
250-402	1—12/32	1	3/4	2—1/2	1/2—1

V-groef houdt ronde schachtboorstaven en gereedschappen vast als evenals saquare-gereedschapsbits voor het bewerken van kopse kanten, externe bewerkingen, snijden, boren, enz.

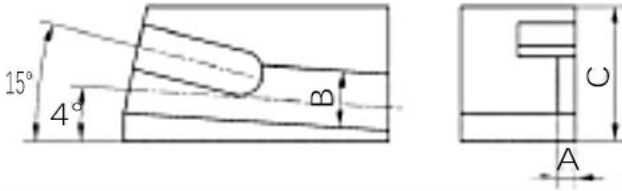
Zware boorstanghouder



ORDER NO.	A	B	C	D
	INCH	INCH	INCH	INCH
250-004	0.47	1.18	3/8	1/2
250-104	3/4	1—1/2	5/8	3/4
250-204	7/8	1—3/4	3/4	1
250-304	1	2	3/4	1
250-404	1—1/4	2—1/2	1	1—1/4
250-141	7/8	1—3/4	3/4	1
250-241	1	2	1	1—1/4
250-341	1—1/8	2—1/4	1	1—1/4
250-441	1—3/8	2—3/4	1—1/4	1—1/2

Gespleten bus geschikt voor kleine boorstaven en boren

Universele houder voor afstekmes



ORDER NO.	A	B	C	CLAMPING RANGE	TOOL BIT RANGE
	INCH	INCH	INCH	INCH	INCH
250-010	0.53	1.77	1.18	3/16—1/2	1/2*3/16*3/16
250-110	7/8	1—1/2	1—9/16	3/16—1/2	3/4*3/8*1/4
250-210	1	2—5/8	1—3/4	1/4—5/8	
250-310	1—3/16	3—1/8	2	1/2—3/4	
250-410	1—7/16	3—3/4	2—1/2	1/2—1	

Het kan worden gebruikt voor kartelen, als er een vierkant gereedschap wordt gebruikt, kan het kopse kanten bewerken, uitwendig snijden, boren, enz.

Lippen: Om uw product beter te beschermen, brengen we antiroestolie aan. Dit kan oliekkage veroorzaken.

Manufacturer: Shanghaimuxinmuyeyouxiangongsi

Address: Shuangchenglu 803nong11hao1602A-1609shi, baoshanqu, shanghai 200000 CN.

Imported to AUS: SIHAO PTY LTD. 1 ROKEVA STREETEASTWOOD NSW 2122 Australia

Imported to USA: Sanven Technology Ltd. Suite 250, 9166 Anaheim Place, Rancho Cucamonga, CA 91730

EC	REP
-----------	------------

E-CrossStu GmbH
Mainzer Landstr.69, 60329 Frankfurt am Main.

UK	REP
-----------	------------

YH CONSULTING LIMITED.
C/O YH Consulting Limited Office 147, Centurion House,
London Road, Staines-upon-Thames, Surrey, TW18 4AX

VEVOR®

TOUGH TOOLS, HALF PRICE

Teknisk Support och e-garanticertifikat

www.vevor.com/support

Snabbt byte av verktygsstolpar Användarmanual

MODELL: 250-100(6), 250-200(6), 250-100(8), 250-200(8)

250- 000 (6), 250-1 11 (6), 250- 222 (6),

250- 111 (8), 250- 222 (8)

Vi fortsätter att vara engagerade i att ge dig verktyg till konkurrenskraftiga priser. "Spara hälften", "Halva priset" eller andra liknande uttryck som endast används av oss representerar en uppskattning av besparingar du kan dra nytta av att köpa vissa verktyg med oss jämfört med de stora toppmärkena och betyder inte nödvändigtvis att täcka alla kategorier av verktyg som erbjuds av oss. Du påminns vänligen om att verifiera försiktigt

när du gör en beställning hos oss om du faktiskt gör det Sparande Halv i jämförelse med de främsta stora varumärkena.

VEVOR®

TOUGH TOOLS, HALF PRICE

QUICK CHANGE TOOL POST SET

MODELL: 250-100(6), 250-200(6), 250-100(8), 250-200(8) , 250- 000 (6),
250-1 11 (6), 250- 222 (6) , 250- 111 (8), 250- 222 (8)



(Bilderna är endast för referens, se det faktiska objektet)

NEED HELP? CONTACT US!

Have product questions? Need technical support? Please feel free to contact us:

Technical Support and E-Warranty Certificate
www.vevor.com/support

This is the original instruction, please read all manual instructions carefully before operating. VEVOR reserves a clear interpretation of our user manual. The appearance of the product shall be subject to the product you received. Please forgive us that we won't inform you again if there are any technology or software updates on our product.

QUICK CHANGE TOOL POST

Drag:

- All arbetande delar härdade och slipade.
- Maximal styvhet för prätfri prestanda. Ingen tid slösas bort med shims.
- Ökar produktiviteten för alla svarvoperationer.
- Helt förseglad för underhållsfri drift.
- Byt verktyg på några sekunder.



◆ KOLVTYP VERKTYGSPOSTSÄTT

BESTÄLLA INGA.	VARVGUNG	6 DELAR VARJE SET INGÅR (6 STK/SET)
250-100 (6)	12"	250-100, 250-101, 250-102, 250-104 , 250-107 , 250-110 VARJE 1 ST
250-200 (6)	10"-15"	250-200, 250-201, 250-202, 250-204, 250-207, 250-210 VARJE 1 ST
250-300 (6)	13"-18"	250-300, 250-301, 250-302, 250-304, 250-307, 250-310 VARJE 1 ST
250-400 (6)	14"-20"	250-400, 250-401, 250-402, 250-404, 250-407, 250-410 VARJE 1 ST

BESTÄLLA INGA.	VARVGUNG	8 DELAR VARJE SET INGÅR (8 st/SET)
250-100 (8)	12"	250-100, 250-101, 250-102, 250-104 , 250-107 , 250-110 VARJE 1 ST 250-101T*2 STK
250-200 (8)	10"-15"	250-200, 250-201, 250-202, 250-204, 250-207, 250-210 VARJE 1 ST 250-201T*2 STK



KILTYP VERKTYGSPOSTSÄTT

Varje set består av en verktygsstolpe av pisiontyp och en av var och en av 5 hållare

BESTÄLLA INGA.	VARVGUNG	6 DELAR VARJE SET INGÅR (6 STK/SET)
250-000 (6)	8 "	250-000, 250-001, 250-002, 250-004, 250-007, 250-010 VARJE 1 PC
250-111 (6)	12 "	250-111, 250-101, 250-102, 250-104, 250-107, 250-110 VARJE 1 ST
250-222 (6)	10 " -15 "	250-222, 250-201, 250-202, 250-204, 250-207, 250-210 VARJE 1 ST
250-333 (6)	13 " -18 "	250-333, 250-301, 250-302, 250-304, 250-307, 250-310 VARJE 1 ST
250-444 (6)	14 " -20 "	250-444, 250-401, 250-402, 250-404, 250-407, 250-410 VARJE 1 ST

BESTÄLLA INGA.	VARVGUNG	8 DELAR VARJE SET INGÅR (8 st/SET)
250-111 (8)	12 "	250-111, 250-101, 250-102, 250-104, 250-107, 250-110 VARJE 1 ST 250-101T * 2 st
250-222 (8)	10 " -15 "	250-222, 250-201, 250-202, 250-204, 250-207, 250-210 VARJE 1 ST 250-201T * 2 st

Snabbväxlingsverktyg Stolpekolvstil-tillbehör



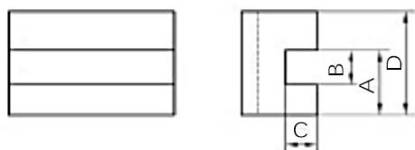
ORDER NO.	SWING FOR LATHE	A	B	C	D
	INCH	INCH	INCH	INCH	INCH
250-100	12	2- 1/2	3-7/8	2 -1/4	9/16
250-200	10-15	3	4 - 5/8	2 - 3/4	5/8
250-300	13-18	3 - 3/8	5 -1/8	3	3/4
250-400	14-20	4	6 -1/4	3 5/8	7/8

Snabbbyte av verktyg efter kilstil



ORDER NO.	SWING FOR LATHE	A	B	C	D
	INCH	INCH	INCH	INCH	INCH
250-000	12	1.75	2.95	1.57	0.40
250-111	10-15	2-1/2	3-7/8	2-1/4	9/16
250-222	13-18	3	4-5/8	2-3/4	5/8
250-333	14-20	3-3/8	5-1/8	3	3/4
250-444	17-48	4	6-1/4	3-5/8	7/8

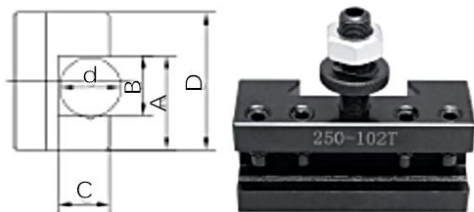
Vrid- och vändhållare



ORDER NO.	A	B	C	D	TOOL BIT RANGE
	INCH	INCH	INCH	INCH	INCH
250-001	0.86	0.5	0.327	1.1	3/16—1/2
250-101	1	1/2	29/64	1—1/2	3/16—1/2
250-201	1—1/8	5/8	1/2	1—3/4	1/4—5/8
250-301	1—7/16	3/4	5/8	2—1/8	1/2—3/4
250-401	1—12/32	1	3/4	2—1/2	1/2—1

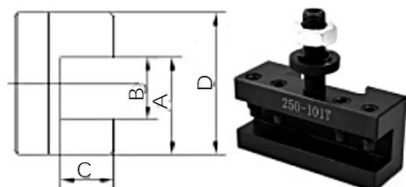
Lämplig för alla storlekar mindre än max. Höjd h.

Vrid- och vändhållare



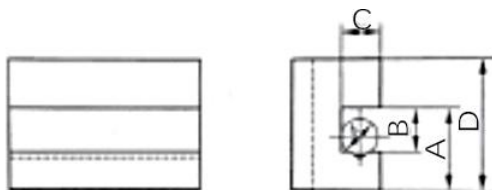
ORDER NO.	A	B	C	D	TOOL BIT RANGE
	INCH	INCH	INCH	INCH	INCH
250-102T	1"	5/8"	1/2"	1-1/2"	3/16-5/8"
250-202T	1-1/8"	3/4"	5/8"	1-3/4"	1/4-3/4"

Vrid- och vändhållare



ORDER NO.	A	B	C	D
	INCH	INCH	INCH	INCH
250-101T	1"	5/8"	1/2"	1-1/2"
250-201T	1-1/8"	3/4"	5/8"	1-3/4"

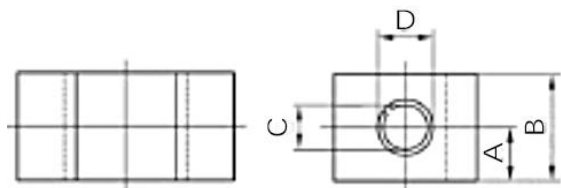
Borr-, vrid- och vändhållare



ORDER NO.	A	B	C	D	TOOL BIT RANGE
	INCH	INCH	INCH	INCH	INCH
250-002	0.66	0.5	0.327	1.1	3/16—1/2
250-102	1	1/2	29/64	1—1/2	3/16—1/2
250-202	1—1/8	5/8	1/2	1—3/4	1/4—5/8
250-302	1—7/16	3/4	5/8	2—1/8	1/2—3/4
250-402	1—12/32	1	3/4	2—1/2	1/2—1

V-spår håller runt skaft borrstänger och verktyg som samt saure verktygsbitar för att bearbeta ändytan, utvändig, skärande, borring etc.

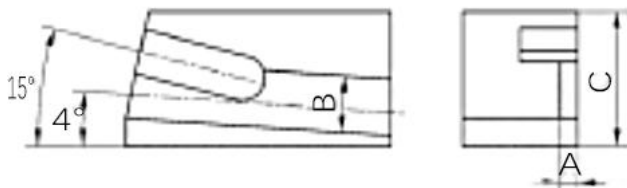
Heavy Duty Boring Bar Hållare



ORDER NO.	A	B	C	D
	INCH	INCH	INCH	INCH
250-004	0.47	1.18	3/8	1/2
250-104	3/4	1—1/2	5/8	3/4
250-204	7/8	1—3/4	3/4	1
250-304	1	2	3/4	1
250-404	1—1/4	2—1/2	1	1—1/4
250-141	7/8	1—3/4	3/4	1
250-241	1	2	1	1—1/4
250-341	1—1/8	2—1/4	1	1—1/4
250-441	1—3/8	2—3/4	1—1/4	1—1/2

Delad bussning lämplig för små borrhängar & borrar

Universalhållare för avstickningsblad



ORDER NO.	A	B	C	CLAMPING RANGE	TOOL BIT RANGE
	INCH	INCH	INCH	INCH	INCH
250-010	0.53	1.77	1.18	3/16—1/2	1/2*3/16*3/16
250-110	7/8	1—1/2	1—9/16	3/16—1/2	3/4*3/8*1/4
250-210	1	2—5/8	1—3/4	1/4—5/8	
250-310	1—3/16	3—1/8	2	1/2—3/4	
250-410	1—7/16	3—3/4	2—1/2	1/2—1	

Det kan användas för räfnig, om fyrkantigt verktyg används, kan det bearbeta ändyta, utvändig skärning, borrar etc.

Läppar: För att ge bättre skydd för din produkt kommer vi att applicera rostskyddsolja, vilket kan orsaka oljeläckage.

Manufacturer: Shanghaimuxinmuyeyouxiangongsi

Address: Shuangchenglu 803nong11hao1602A-1609shi, baoshanqu, shanghai 200000 CN.

Imported to AUS: SIHAO PTY LTD. 1 ROKEVA STREETEASTWOOD NSW 2122 Australia

Imported to USA: Sanven Technology Ltd. Suite 250, 9166 Anaheim Place, Rancho Cucamonga, CA 91730

EC	REP
-----------	------------

E-CrossStu GmbH
Mainzer Landstr.69, 60329 Frankfurt am Main.

UK	REP
-----------	------------

YH CONSULTING LIMITED.
C/O YH Consulting Limited Office 147, Centurion House,
London Road, Staines-upon-Thames, Surrey, TW18 4AX