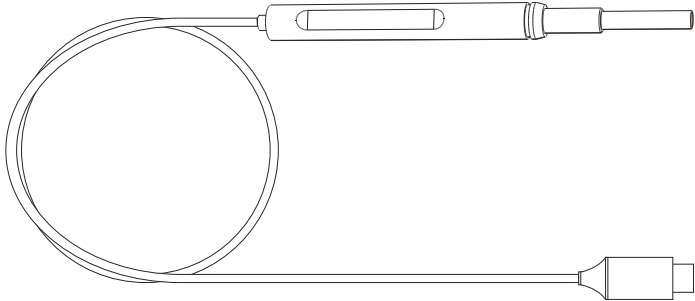


ANYKIT

**Otoscope
User
Manual**

Model No.: AKE390S



⚠ READ BEFORE USE

Please keep the user manual for future reference, you can also scan this QR code to download the PDF user manual.

By using this product, you signify that you have read, understand, and accept the terms and conditions here.

Read the following documents before using:

1. Safety Guidelines
2. Quick Start Guide
3. User Manual

It is recommended to watch all tutorial videos and read the safety guidelines before using for the first time. Prepare for your first use by reviewing the quick start guide and refer to this user manual for more information.

Video Tutorials

Scan the QR code to watch the AKE390S tutorial videos, which guidelines how to use the AKE390S safely.



Online Manual



Video Tutorials

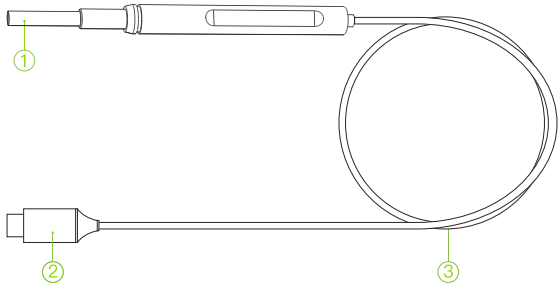
■ ABOUT ANYKIT

Anykit is a trendy and practical tool brand. We focus on simplicity and ease of use, providing people with convenience in their everyday lives. Our products including otoscopes, endoscopes, and a variety of household tools to enable DIY enthusiasts to embrace creativity and convenience.

■ FOLLOW ANYKIT



■ INSTRUCTIONS



1.	Camera
2.	Type-C Connector
3.	Cable



Disinfect the specula or ear spoon by wiping them with 70% alcohol solution.

■ PRODUCT SPECIFICATIONS

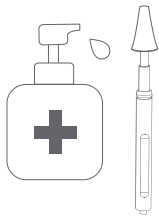
Model	Lens Pixels	Camera Diameter	Cable Length	Camera Lights	Focal Distance	View Angle	Device Compatibility
AKE390S	300,000 pixels	3.9 mm	5.9 ft (1.8m)	6 LED Lights	0.4 inch–1.2 inch (10mm–30mm)	68°	Android & iOS (Type-C)

This device complies with part 15 of the FCC Rules. Operation is subject to the following two conditions:

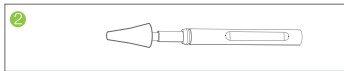
- (1) This device may not cause harmful interference.
- (2) This device must accept any interference received, including interference that may cause undesired operation.

■ INSTRUCTIONS

Disinfect the specula or ear spoon by wiping them with 70% alcohol solution before and after EVERY use.
For safer and cleaner ears, please install the speculum or ear spoon before use.

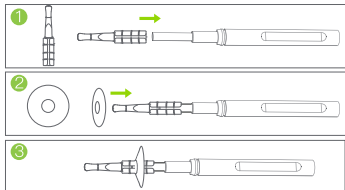


■ INSTALL THE SPECULUM ON THE TIP

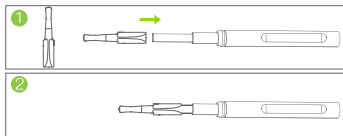


■ INSTALL THE EAR SPOON ON THE TIP

Spoon Set A (plastic)



Spoon Set B (metal)



To ensure clarity, please take note of the following:

1. Our ear otoscope is available in two different packages: one includes plastic ear spoons, and the other includes metal ear spoons.
2. Please check the packaging contents to ensure they match the ear spoon accessories you purchased.

■ SOFTWARE FUNCTION

DOWNLOADING THE APP

Use the otoscope with the “**Xscope**” app. You can download it from Apple Store/Google Play or scan the QR code below.

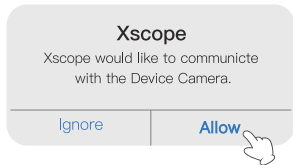


■ CONNECTING GUIDE

Connecting Guide

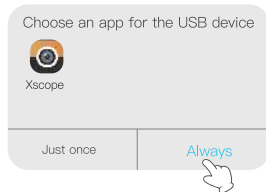
1. Insert the type-C connector of the inspection camera into your smart device (Suitable for Apple devices with type-C interface, such as iPhone 15/15Pro/15Plus /15Pro Max Mac Book Pro 2020, iPad Pro 2020, iPad Air 4)

P-1



2. You'll receive a notification and click "Allow" to use it. (P-1 for iOS)
You'll receive a notification and click "Always" to use it. (P-2 for Android)

P-2



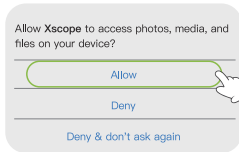
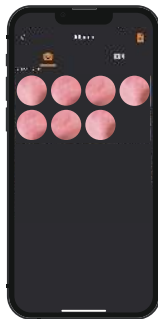
■ OPERATING INSTRUCTIONS



Camera: Start to use the camera

Albums: Review the photos/
videos you take

Settings: Enter into the app settings



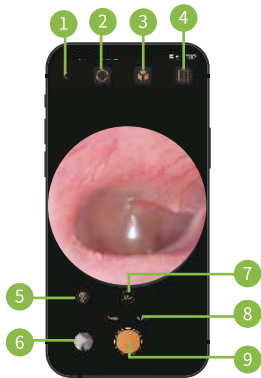
! If the otoscope is not connecting (Only the light is on), unplug it and attempt to connect again.

■ APP INSTRUCTIONS

- 1: Back
- 2: Rotate Image 90°
- 3: Color/Black and White Image
- 4: Split Screen Mode
- 5: Left/Right Ear Switch
- 6: Albums
- 7: Zoom (Pinch with two fingers)
- 8: Photo/Video Switch
- 9: Take a Photo/Video

⚠ NOTE

If the image is blurry, clean the lens with alcohol wipe and cotton swab.



■ FAQ

Q: Why does the otoscope show normal color and clarity when viewing the ear canal, but exhibit color distortion and blurriness in other scenes?

A: The otoscope is specifically designed for observing the ear canal, so we have optimized the focal length, light brightness, and color settings to ensure normal color and clarity in the ear canal images. However, when used in other scenes, you may experience color distortion and blurriness due to lighting and focal length differences.

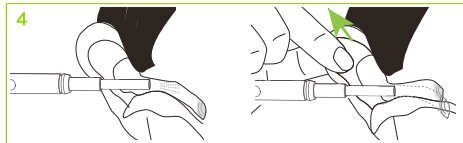
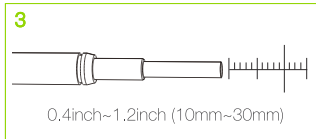
Focal length issue: The otoscope's focal length is set to accommodate the small, close-up nature of the ear canal, which can result in some blurriness when observing distant scenes. We recommend maintaining a moderate observation distance (0.4 inch– 1.2 inch) when using the ear scope to obtain a clearer image.

Brightness issue: The brightness of the otoscope's light is designed to prevent overexposure in the ear canal images. Therefore, the light may appear relatively dim in other scenes, leading to color distortion and blurriness. This is a normal phenomenon, and there is no need to worry. If you need to observe other scenes, we suggest using the ear scope in well-lit environments for a more accurate color display.

Alternatively, you can consider purchasing our other models of borescope, which provide clearer image quality in the wider area.

■ NOTICE

1. Disinfect the surface of the device and adapter before contacting skin.
2. Please keep the camera clean to avoid blurry images. (Refer to maintenance for how to clean the camera).
3. Please keep a focal length of about 0.4inch~1.2inch (10mm~30mm) to achieve the best quality image (placing the scope too far from your focal point may result in blurry images).
4. The ear canal is not perfectly straight, gently adjust the position of the otoscope and gently pull the top of your ear up and back to help view your eardrum easily.

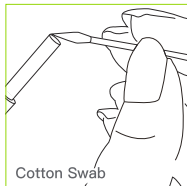


■ MAINTENANCE

To optimize the image quality and maintain personal hygiene, please following these tips to clean the camera before and after EACH use:

1. Clean the lens carefully with alcohol pads.
2. Wipe the lens grooves with an alcohol-soaked cotton swab.

This can prevent ear wax from sticking to the tip of the camera and causing blurry images. You can apply pressure when cleaning the camera to remove stubborn ear wax completely.



■ TROUBLESHOOTING

The device lights up, but the app shows it is not connected

1. Please ensure your device is iOS 9+ or Android 7+ with the function of OTG and UVC.
2. Please check if the camera light is on. If it's not, or if the interface isn't making good contact, please unplug and then plug it back in.
3. If you drop or mishandle the product during transportation or use, it may cause damage to the internal structure or poor contact. Please contact our customer service team for assistance. 877-899-8809, Mon-Fri. 8: 00-5: 00 PST

Frozen images

Your phone's battery may be low. Please keep your phone's battery level above 20%.

Blurry image

Please clean the camera before and after every use to avoid blurry images, Blurry images are frequently caused by earwax on the camera lens.

Cannot thoroughly clean the lens

Please follow the steps:

1. Clean the lens carefully with alcohol pads
2. Wipe the lens grooves with an alcohol-soaked cotton swab

■ WARRANTY

30-Day Guarantee	We will give you a full refund if you are not satisfied with the product.
One-Year Warranty	We offer a limited warranty that commences from the date of purchase of the product.



How to Receive Service

Visit **anykit.com** or scan the QR code for more details.

To obtain warranty service, contact our customer service team at **support@anykit.com**

■ CUSTOMER SUPPORT

If you have any questions or concerns about your product, please contact our Customer Support Team



1-877-888-7979

Mon.-Fri. 8:00-5:00 PST(US)



support@anykit.com



www.anykit.com



@anykit



Facebook Messenger



@anykit



3.06.16.000402-02 D0516 V1.1