

serenelife™

Start Here



Serenelifehome.com/register



SLSUPB010 - SLSUPB0106 - SLSUPB011
SLSUPP04 - SLSUPP05 - SLSUPCLO1

Inflatable Stand-Up Paddle-Board

USER GUIDE

This manual provides general guidelines and may not cover all features of your model. It may also describe features not available on your specific unit. Features are subject to change without notice.

FOR YOUR SAFETY

- Check your board & equipment before going into the water.
- Try to avoid going out on the water alone.
- Always have a means of communication while on the water.
- Check weather conditions and tides before heading out.
- Avoid paddling when winds are blowing away from shore.
- Be aware of tides and water flow, and how they may affect your travel time.
- Wear a wetsuit or drysuit as needed.
- Always wear a life jacket or a flotation device.
- Always wear your board leash.
- Take a first aid course, and always carry first aid equipment.
- Do not go out on the water if you cannot swim.
- Avoid going on the water if you have been drinking or are under the influence of drugs.

Features:

- Stand-Up Paddleboard (SUP)
- Single-Person Inflatable Platform
- Water-ready with Everything Needed to Paddle
- Stable Design for Children, Teens, and Adults
- Marine-Grade, Waterproof, Corrosion-Resistant Build
- Lightweight, Portable, and Convenient
- Hassle-Free Setup for Quick Water Fun
- Advanced Double-Welded Seam
- Easy to Inflate and Deflate
- Non-Slip EVA Deck Pad
- Wide/Stable Shape
- Quick Fin Installation and Removal
- Ideal for Beginner to Intermediate Paddlers
- Suitable for Lakes, Rivers, or Oceans
- Some models include Pet-Friendly Design, Smooth Surface, Transparent Viewing Window, and Universal GoPro Mount

California Prop 65 Warning

WARNING:

This product may expose you to chemicals, which is known to the state of California to cause cancer, birth defects and other reproductive harm. Do not ingest.

For more info go to: www.P65warnings.ca.gov

INTRODUCTION

IMPORTANT! PLEASE READ THIS MANUAL CAREFULLY, AND IN ITS ENTIRETY, BEFORE INFLATING, ASSEMBLING OR USING YOUR FREE-FLOW WELDED INFLATABLE STAND-UP PADDLE-BOARD.

Thank you for purchasing our Free-Flow Welded Inflatable Stand-Up Paddle-Board. This versatile and durable paddleboard is designed for users of all skill levels, providing an excellent way to enjoy water activities such as paddling, surfing, and more. This manual will guide you through the setup, usage, and maintenance of your paddleboard to ensure you have the best experience possible. Please read it carefully before use.

What's in the Box:

- Inflatable SUP Paddleboard
- Double-Action Hand Pump
- (1) 3-Piece Aluminum SUP Paddle
- (1) Leash
- (1) Removable Fin
- (2) Side Fins (where applicable)
- Repair Kit
- Black Backpack

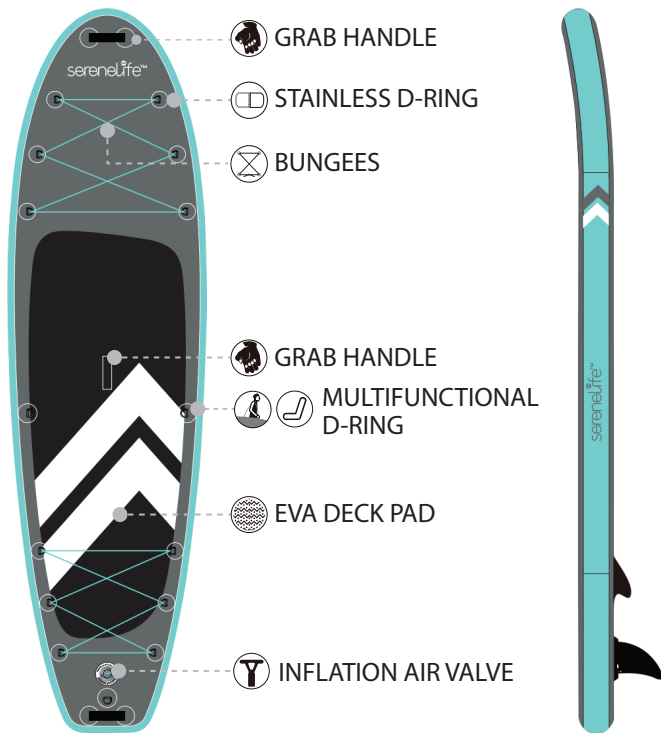
Technical Specifications

- **SLSUPB010:** Dimensions: 10' x 33" x 6",
Max. Weight Capacity: 350 lbs., Item Weight: 7.8 lbs.
- **SLSUPB0106:** Dimensions: 10.6' x 33" x 6",
Max. Weight Capacity: 350 lbs., Item Weight: 8.35 lbs.
- **SLSUPB011:** Dimensions: 11' x 32" x 6",
Max. Weight Capacity: 350 lbs., Item Weight: 8.65 lbs.
- **SLSUPP04:** Dimensions: 11' x 35" x 6",
Max. Weight Capacity: 440 lbs., Item Weight: 9 lbs.,
Features: Pet-Friendly, GoPro Mount
- **SLSUPP05:** Dimensions: 11.6' x 35" x 6",
Max. Weight Capacity: 440 lbs., Item Weight: 8.86 lbs.,
Features: Smooth Surface
- **SLSUPCL01:** Dimensions: 10.6' x 32" x 6",
Max. Weight Capacity: 350 lbs., Item Weight: 7.9 lbs.,
Features: Transparent Viewing Window, GoPro Mount

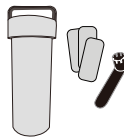
Additional Specifications

- Construction Material: Single-Layer Drop-Stitch
- Recommended Air Pressure Inflation: 13 PSI (0.89 Bar)
- Water Fun for Ages: 10+

WHAT'S WHAT?



- Heavy-Duty Drop-Stitch PVC
- Heavy-Duty Built-In Carrying Handles
- **Large EVA Foot Pad:** The board features a large EVA foot pad for superior grip and comfort.
- Removable Fin



REPAIR BAG

In case of punctures or rips, includes patches and a valve tool to quickly fix punctures or damage.



FIN

Detachable 9-inch fins enhance directional stability while paddling.



LEASH

Keeps you connected to the board for added safety.



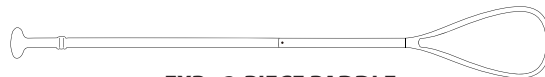
PUMP W/GAUGE

This manual pump inflates your board by inserting the end of the hose into the inflate port and pumping it to the proper PSI.



HEAVY-DUTY STORAGE BACKPACK

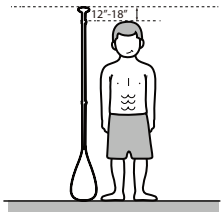
High-capacity bag designed to store and transport the board and its accessories.



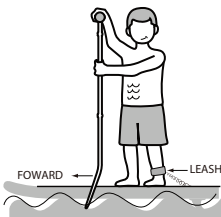
EXP - 3-PIECE PADDLE

Aluminum paddle with a large blade for better water contact. The length can be customized to suit your height and preference.

Please note that the pictures shown are only to illustrate the accessories and various parts of different models of boards.



Paddle Height: Paddles should be adjusted to the correct length—approximately 12-18 inches above your head when standing.



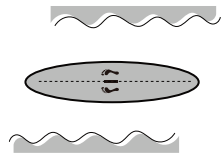
Stand Still: Stand on the board with your feet shoulder-width apart. Hold the T-handle with one hand and the paddle shaft with the other. Avoid looking down at your feet; keep your gaze level with the horizon. Keep your knees slightly bent for balance.

Always Put Your Leash On: Always wear the leash to ensure safety while paddling.



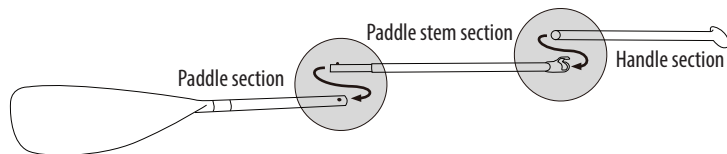
Paddling: Place the paddle into the water at an arm's length in front of you, then pull it back along the board. Ensure both hands are aligned, and the blade is vertical during the stroke.

Surfer Pose: When catching a wave, shift one foot slightly forward to improve balance and agility.

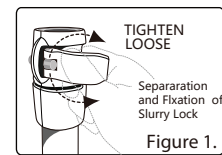
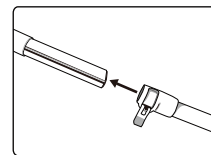
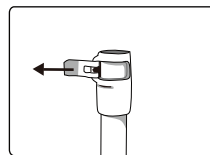


SUP Paddle:

The paddle consists of three parts: a lightweight aluminum shaft and a durable plastic blade. It provides effective directional control for extended use.



How to adjust the length of the paddle?



1. Use the spring ball and lock mechanism for quick assembly.
2. Adjust the paddle to your preferred length, ensuring it does not exceed the "STOP" mark.
3. If the paddle feels loose at the connection point, tighten it by rotating the lock clockwise (refer to Figure 1).



Note: The ergonomic grip ensures comfortable handling (see Figure 2).

Fin Type

We have two ways to install fins, which can be chosen accordingly. Your SUP is either equipped with a Slide Fin, Screw Fin, or US Fin. Please check your fin type and follow the instructions below.

Tip: Before you begin, please ensure the fin box slot is clean and free of sand and grit.

Slide Fin

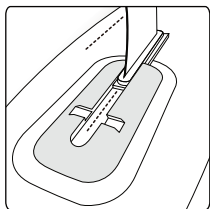


Figure 1

Slide the fin into the fin box. Ensure the fin and the card slot of the fin box are in the same position.

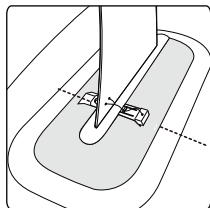


Figure 2

Insert the gasket into the slot to secure the fin in place.

US Fin

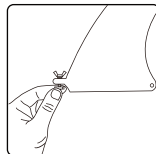


Figure 1

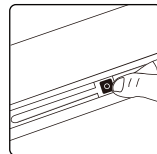


Figure 2

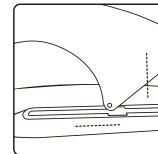


Figure 3

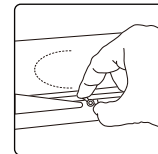


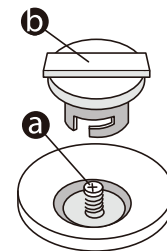
Figure 4

1. Detach the plate from the screw (Figure 1) and place it into the fin slot via the gap (Figure 2).
2. Use the screw to slide the plate into place along the slot.
3. Insert the fin into the fin box slot via the central gap, slide the fin to the back, and firmly push down the other end (Figure 3).
4. Line up the screw with the screw plate and tighten until fully secured (Figure 4).

Operation of Valves

To inflate the board:

1. Remove the valve cover and turn it clockwise to set it to the "output" position.
2. Inflate the board using the pump provided.
3. Once inflated, screw the valve cover back on counterclockwise.



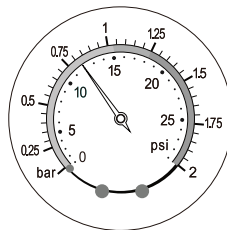
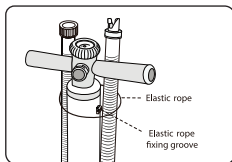
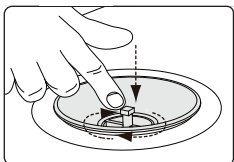
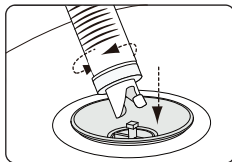
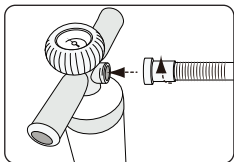
To deflate the board: Press the valve core clockwise with your fingers. Do not use the black wrench to deflate.

WARNING: Use only the pump provided or other recommended pumps. Do not use an air compressor to avoid over-inflation and potential board damage, which voids the warranty.

Note: The supplied black wrench is for tightening the valve only. Do not use it to deflate the board.

Inflation Process

1. Unroll your SUP on a smooth, clean surface.
2. Connect the air pump to the valve and secure the connection by pushing the air tap inwards and twisting it clockwise.
3. Check the recommended PSI on the valve and inflate the board. Do not exceed the recommended PSI.
4. The pump gauge will start to register pressure at around 6-7 PSI. Continue inflating until 12-15 PSI is reached.
5. Disconnect the pump and secure the valve once fully inflated.
6. To deflate the board press the valve core clockwise with your fingers. Do not use the black wrench to deflate.

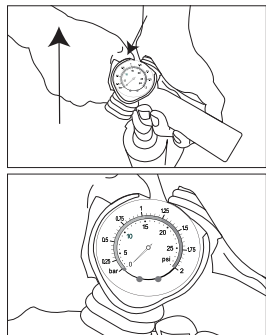
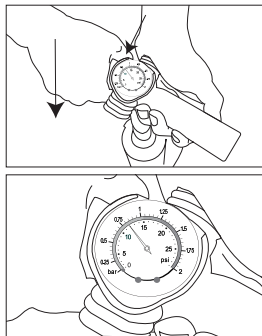


Important Notes:

- During inflation, the gauge pointer begins to move once pressure reaches 6-7 PSI. Continue inflating until 12-15 PSI is achieved.
- For optimal performance, avoid over-inflation. If the board will be exposed to heat or direct sunlight, slightly under-inflate to prevent pressure buildup.

TWO-WAY PUMP TEST

1. Detach the hose from the pump.
2. Fully press the air outlet with your hand and push the pump handle downward.
3. Check the pressure gauge needle; if it moves, it indicates the inflation port, and the pressure gauge is functioning correctly.

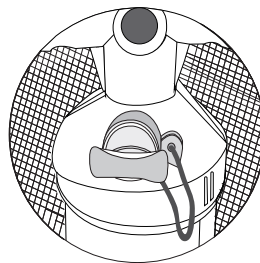


4. Fully press the air outlet with your hand and lift the pump handle upward.
5. If you feel a suction force on your hand, it indicates the deflation port.

Note: The gauge will only register pressure after the air in the board reaches 7 PSI. If the pointer does not move after multiple tests, the gauge is damaged.

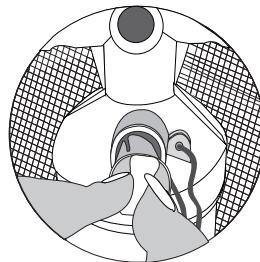
Recommendation: Inflate the board to 12 PSI for standard use. For any issues, contact customer service.

FAST SYSTEM: SWITCH-VALVE



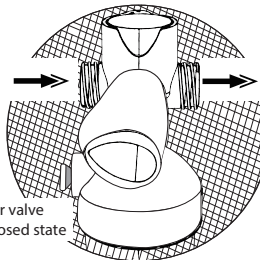
Closed Position

- 0 psi – 5 psi
- High pressure
- Single action



Opening Position

- 5 psi – 20 psi
- High capacity
- Double action



Air Valve Interface at Both Ends

This valve has two functions:

- One end for air intake
- One end for air exhaust

Air valve
closed state

Inflation Tips and Precautions

- Inflate the board using the provided hand or electric pump. Start with an electric pump for 90% of the inflation, then switch to the hand pump for the final pressure.
- **Caution:** Do not use air compressors, as they may overinflate and damage the board. Warranty is void if overinflation occurs.
- A slight pressure drop after 2-3 days is normal due to temperature changes. Add more air if needed.
- Before long paddling sessions, inflate the board for 24 hours to ensure it's airtight. Check for consistent pressure loss if needed.
- The maximum pressure is 12 PSI. When pressing the chambers, they should feel firm but not overly hard.
- Avoid leaving the board fully inflated in direct sunlight or hot environments. Slightly underinflate to allow heat to naturally expand the air.

Board Care and Storage

The board is made from durable PVC for superior protection against ultraviolet light. However, to extend its service life and maintain bright colors, avoid storing the board in extreme weather conditions or direct sunlight.

Storage and Care Tips:

1. Rinse the board with fresh water and allow it to dry completely to prevent mildew.
2. Use mild soap for cleaning; avoid harsh chemicals.
3. Deflate the board and store it in the provided protective bag. Avoid rolling it too tightly.
4. Do not hang the board for storage.
5. Avoid storing the board in extreme temperatures (above 140°F or below 23°F).
6. Keep the board in a cool, dry place to maintain its quality and extend its service life.

Register Product

Thank you for choosing SereneLife.

By registering your product, you ensure that you receive the full benefits of our exclusive warranty and personalized customer support.

Complete the form to access expert support and to keep your SereneLife purchase in perfect condition.

Start Here



Model Number:
SLSUPB010
Serenelifehome.com/pages/register

serenelife™



Questions or Comments

We are here to help!

Phone: 1.718.535.1800

Serenelifehome.com/ContactUs