

Installation Guide

RJ45 SFP Module

©2025 TP-Link 7100001470 REV3.0.1

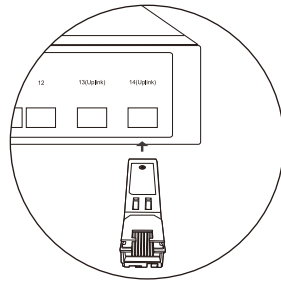
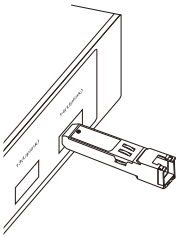
For technical support, replacement services, user guides, and more, please visit <https://support.omadanetworks.com/>, or simply scan the QR code.



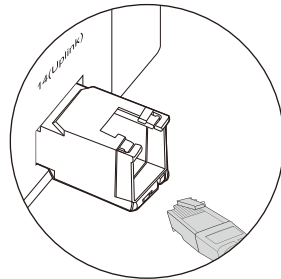
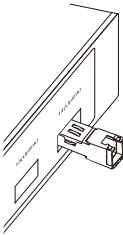
Note: Images may differ from the actual products.

Installing the RJ45 SFP / RJ45 SFP+ Module

1. Lock the yellow latch into place and insert the module into an SFP/SFP+ slot with the label side up.

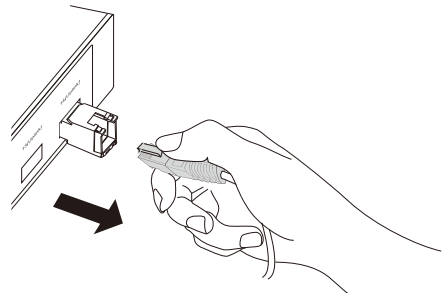
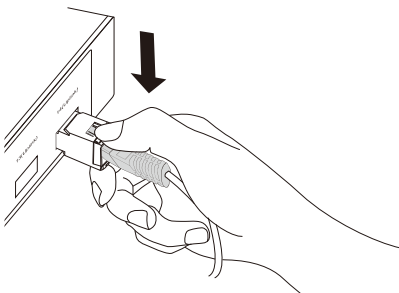


2. Gently push the module into the slot until you hear a click. Then, insert the RJ45 network cable.

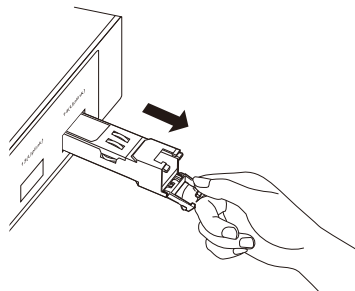
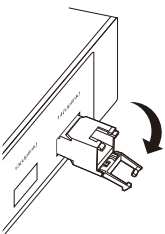


Removing the RJ45 SFP / RJ45 SFP+ Module

1. Press the RJ45 crystal head and pull out the cable.



2. Pull down the latch and remove the module.

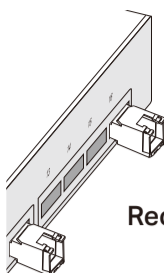


Positioning the 10G RJ45 SFP+ Modules

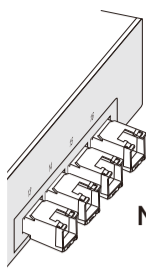
The 10G RJ45 SFP+ modules consume more power than optical modules. This may generate more heat. To avoid overheating, it is recommended to place the modules separated by multiple optical transceivers or empty slots. When used in high temperature environments, additional cooling must be applied.

The figures below only show the recommended positioning. The actual number of modules that can be inserted depends on the switch's heat dissipation and power margin.

Scenario 1:

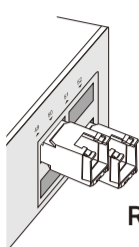


Recommended

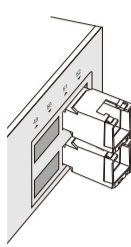


Not Recommended

Scenario 2:



Recommended



Not Recommended

Specifications

General Specifications

Model	SM331T	SM5310-T
Standards and Protocols	IEEE 802.3 IEEE802.3i IEEE 802.3u IEEE 802.3ab IEEE 802.3x SFF-8472 INF 8074/SFP MSA	IEEE 802.3 IEEE 802.3ab IEEE 802.3bz IEEE 802.3an SFF-8472 SFF-8431
MAC Interface	1000/100/10 Mbps: 1000BASE-X	10/5/2.5Gbps: XFI 1000 Mbps: 1000BASE-X
Data Rate* (max.)	1.25 Gbps	10.3125 Gbps
Power Input	3.3 V	3.3 V
Power Consumption (max.)	0.8 W	2.5 W
Cable Distance	10Base-T: UTP category 3, 4, 5 cable (max. 100 m) 100BASE-TX: UTP cat.5 or above (max. 100m) 1000BASE-T: UTP cat.5e or above (max. 100m)	1000BASE-T/2.5GBASE-T/ 5GBASE-T: UTP cat.5e or above (max. 100m) 10GBASE-T: UTP cat.6a or above (max. 30m)
RX_LOS	/	/
TX_Fault	/	/
TX_Disable	Yes	Yes
Hot Swappable	Yes	Yes
LLF	/	/
LFP	/	/
DDM	/	Yes (temperature and voltage)

Compatibility

Model	SM331T	SM5310-T
Gigabit SFP Slot (SFP Slot)	Supported	Supported***
10G SFP+ Slot (SFP+ Slot)	Supported**	Supported***

We recommend using only Omada modules for your Omada devices. To find the compatible Omada devices for your module, please visit our website.

Note:

- * SM5310-T does not support the data rate of 10 Mbps or 100 Mbps.
- ** When using a gigabit RJ45 SFP module in a 10G SFP+ slot, additional port speed configuration may be required.
- ***When a 10G RJ45 SFP+ module operates at 1 Gbps, manual port speed configuration may be required. If inserted into a 10 Gbps SFP+ slot and the peer port supports only 5 Gbps or 2.5 Gbps, flow control must be manually enabled on the 10 Gbps SFP+ slot.

Environmental and Physical Specifications

Product Operating Temperature	0°C to 70°C (32°F to 158°F)
Storage Temperature	-40°C to 85°C (-40°F to 185°F)
Operating Humidity	10% to 90% RH, Non-condensing
Storage Humidity	5% to 90% RH, Non-condensing

環境和物理規格

工作溫度	0°C 至 70°C (32°F 至 158°F)
儲存溫度	-40°C 至 85°C (-40°F 至 185°F)
工作濕度	10% 至 90%RH 無凝結
儲存濕度	5% 至 90%RH 無凝結

Safety Information

- Keep the device away from water, fire, humidity or hot environments.
- Do not attempt to disassemble, repair, or modify the device. If you need service, please contact us.
- Avoid using this product during an electrical storm. There may be a remote risk of electric shock from lightning.
- This equipment can be powered only by equipments that comply with Power Source Class 2 (PS2) or Limited Power Source (LPS) defined in the standard of IEC 62368-1.



FCC compliance information statement

Product Name: 1000BASE-T RJ45 SFP Module/10GBASE-T RJ45 SFP+ Module
Model Number: SM331T/SM5310-T
Responsible party:
TP-Link Systems Inc.
Address: 10 Mauchly, Irvine, CA 92618
Website: <https://www.tp-link.com/us/>
Tel: +1 626 333 0234
Fax: +1 909 527 6804
E-mail: sales.usa@tp-link.com

This equipment has been tested and found to comply with the limits for a Class A digital device, pursuant to part 15 of the FCC Rules. These limits are designed to provide reasonable protection against harmful interference when the equipment is operated in a commercial environment. This equipment generates, uses, and can radiate radio frequency energy and, if not installed and used in accordance with the instruction manual, may cause harmful interference to radio communications. Operation of this equipment in a residential area is likely to cause harmful interference in which case the user will be required to correct the interference at his own expense.

This device complies with part 15 of the FCC Rules. Operation is subject to the following two conditions:
1) This device may not cause harmful interference.
2) This device must accept any interference received, including interference that may cause undesired operation.

Any changes or modifications not expressly approved by the party responsible for compliance could void the user's authority to operate the equipment.

We, TP-Link Systems Inc., has determined that the equipment shown as above has been shown to comply with the applicable technical standards, FCC part 15. There is no unauthorized change is made in the equipment and the equipment is properly maintained and operated.

Issue Date: 2025/06/03

Industry Canada Statement

CAN ICES-003 (A)/NMB-003(A)

CE Mark Warning

This is a class A product. In a domestic environment, this product may cause radio interference, in which case the user may be required to take adequate measures.



Продукт сертифіковано згідно з правилами системи УкрСЕПРО на відповідність вимогам нормативних документів та вимогам, що передбачені чинними законодавчими актами України.



EU Declaration of Conformity

TP-Link hereby declares that the SFP module is in compliance with the essential requirements and other relevant provisions of directives 2014/30/EU, 2011/65/EU and (EU)2015/863.

The original EU declaration of conformity may be found at <https://www.tp-link.com/en/support/ce>.

UK Declaration of Conformity

TP-Link hereby declares that the SFP module is in compliance with the essential requirements and other relevant provisions of the Electromagnetic Compatibility Regulations 2016.

The original UK Declaration of Conformity may be found at <https://www.tp-link.com/support/ukca>

Explanation of the symbols on the product label

產品標籤上符號的解釋

Note: The product label can be found at the bottom of the product. Symbols may vary from products.
注意：產品標籤可在產品底部找到。符號可能因產品而異。

Symbol 符號	Explanation 說明
	Class II equipment 二級設備
	Class II equipment with functional earthing 具有接地功能的二級設備
	Alternating current 交流電
	Direct current DC 電壓
	Polarity of DC power connector 輸出端點的極性
	For indoor use only 僅供室內使用
	Dangerous voltage 危險電壓
	Caution, risk of electric shock 請注意，有觸電的危險
	Energy efficiency marking 能源效率標誌
	Protective earthing 保護接地
	Earth 接地
	Frame or chassis 框架或外殼
	Functional earthing 功能接地
	Caution, hot surface 請注意，表面過熱
	Caution 警告
	Operator's manual 操作手冊
	Stand-by 待機
	"ON"/"OFF" (push-push) “開啟”/“關閉” (按壓式)
	Fuse 保險絲
	Fuse is used in neutral N 保險絲用於中性線 N
	RECYCLING 回收 This product bears the selective sorting symbol for Waste electrical and electronic equipment (WEEE). This means that this product must be handled pursuant to European directive 2012/19/EU in order to be recycled or dismantled to minimize its impact on the environment. Users have the choice to give their product to a competent recycling organization or to the retailer when they buy new electrical or electronic equipment. 這個產品帶有歐盟指令 2012/19/EU 中關於廢棄電氣電子設備 (WEEE) 的選擇性分類標誌。這意味著，該產品必須按照該指令處理，以便進行回收或拆解，從而最大限度地減少對環境的影響。 用戶可以選擇將產品交給有資格的回收機構，或在購買新的電器或電子設備時將其交給零售商進行回收。
	Caution, avoid listening at high volume levels for long periods 請小心，避免長時間以高音量收聽。
	Disconnection, all power plugs 斷線，所有電源插頭
m	Switch of mini-gap construction 迷你間隙結構開關
μ	Switch of micro-gap construction (for US version) Switch of micro-gap / micro-disconnection construction (for other versions except US) 小間隙結構開關 (US 版本) 小間隙 / 小斷開結構的開關 (非 US 版)
ε	Switch without contact gap (Semiconductor switching device) 無接觸間隙的開關 (半導體開關設備)